

Changes in Streamflow and Water Quality in Selected Nontidal Basins in the Chesapeake Bay Watershed, 1985-2004

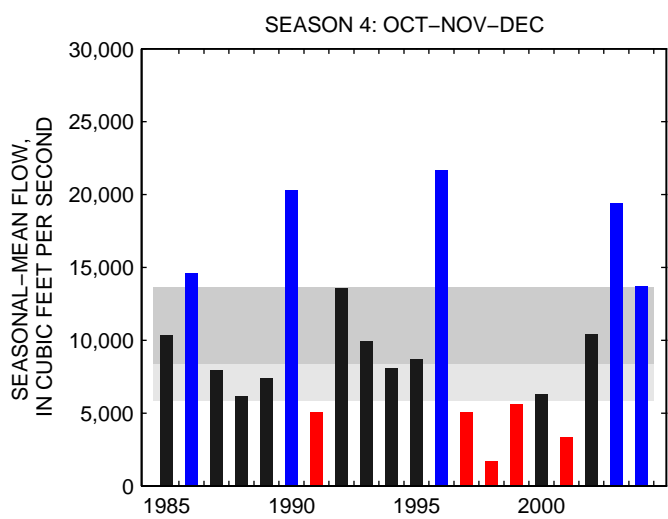
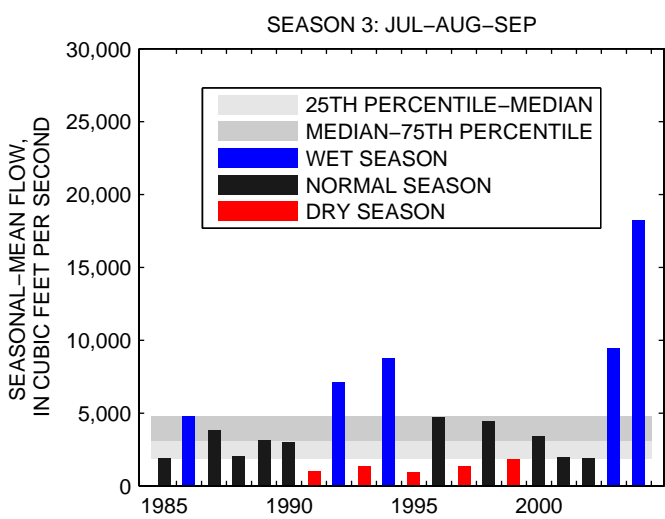
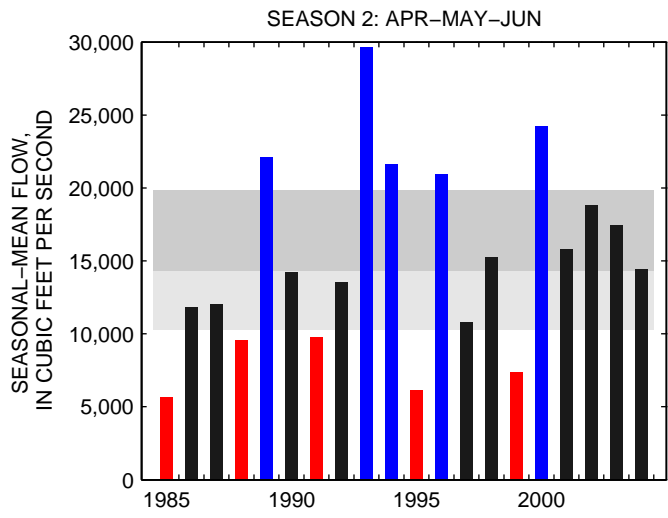
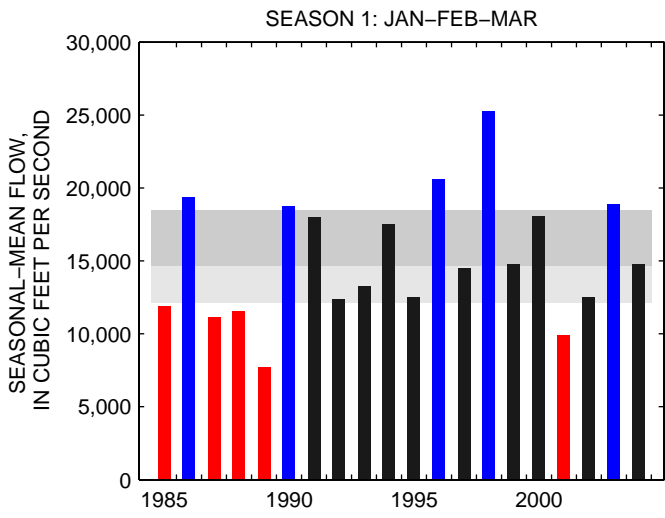
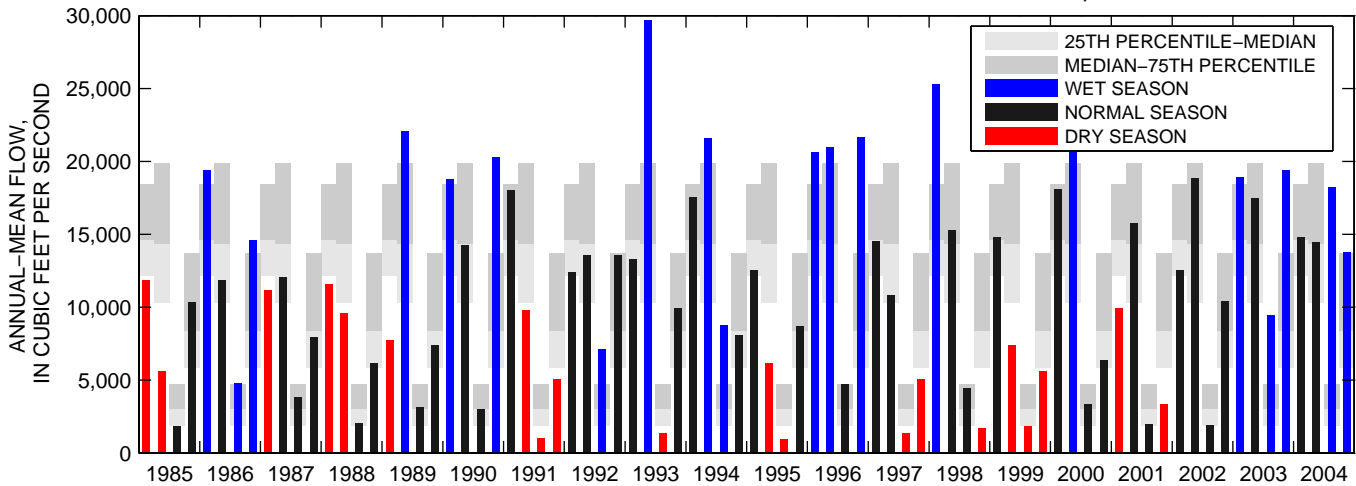
By Michael J. Langland, Jeff P. Raffensperger, Douglas L. Moyer, Jurate M. Landwehr, and Gregory E. Schwarz

Appendix 1. Annual and seasonal flow variations for the 23 Multi-Agency Nontidal Monitoring Program sites.

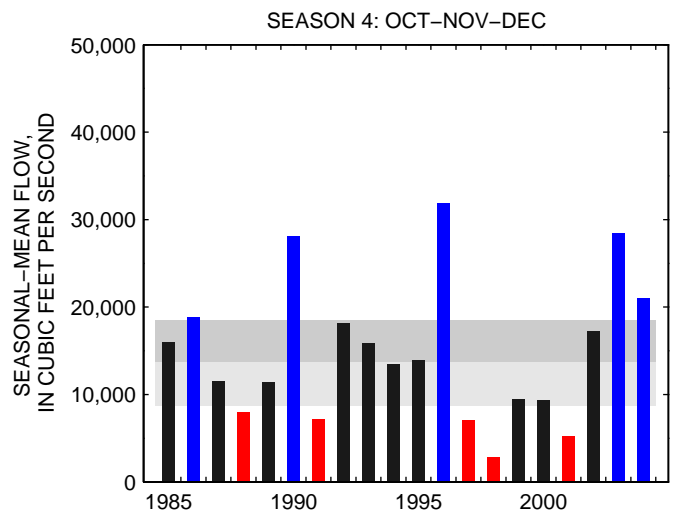
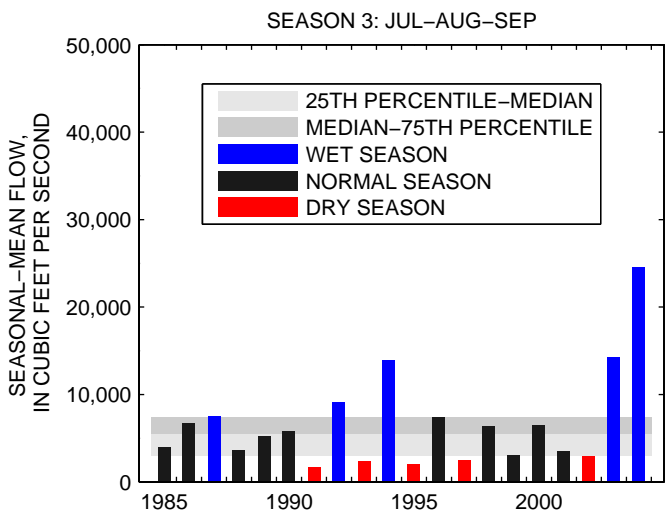
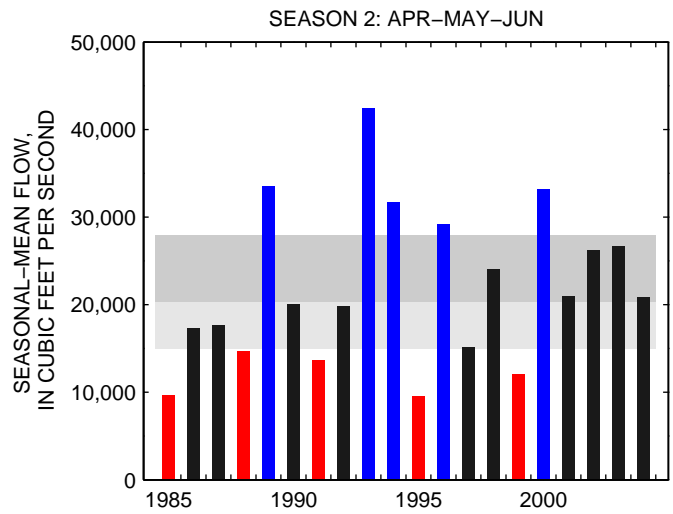
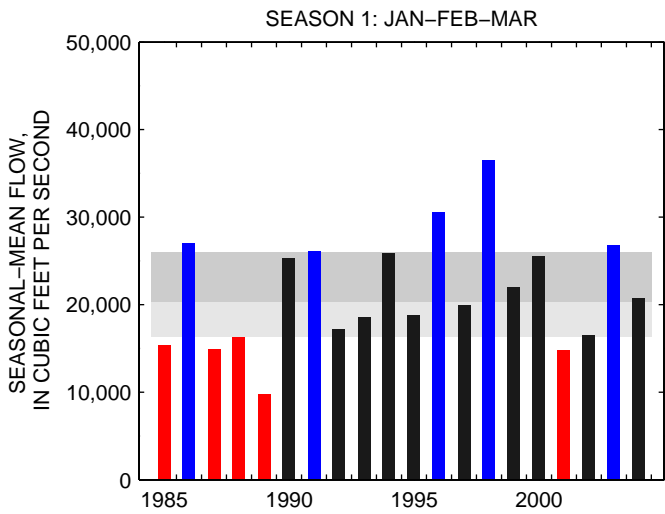
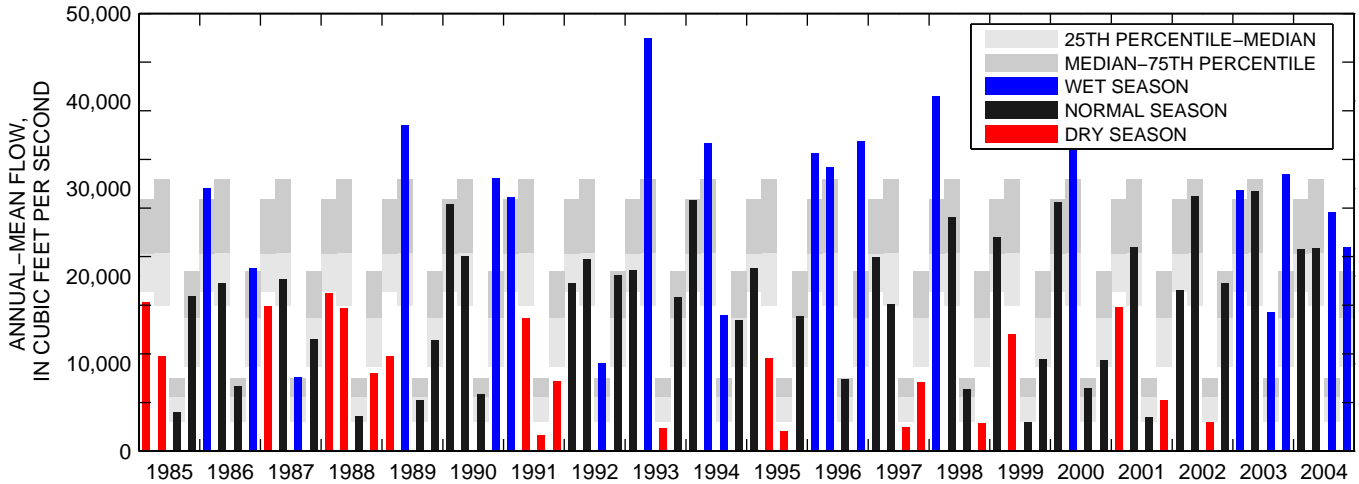
Scientific Investigations Report 2006–5178

U.S. Geological Survey
2006

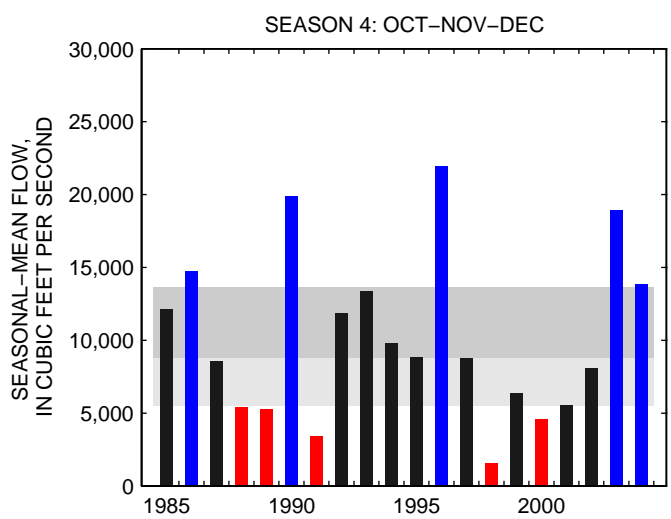
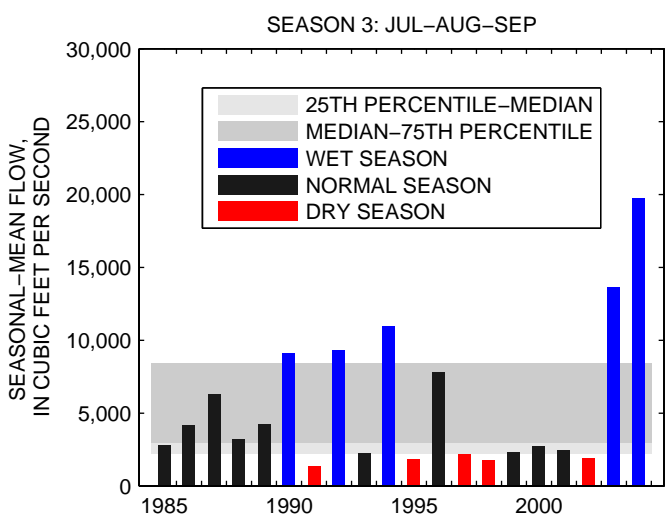
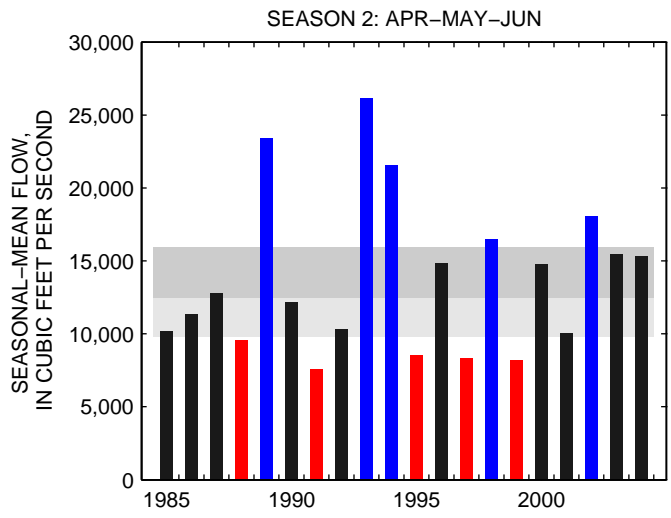
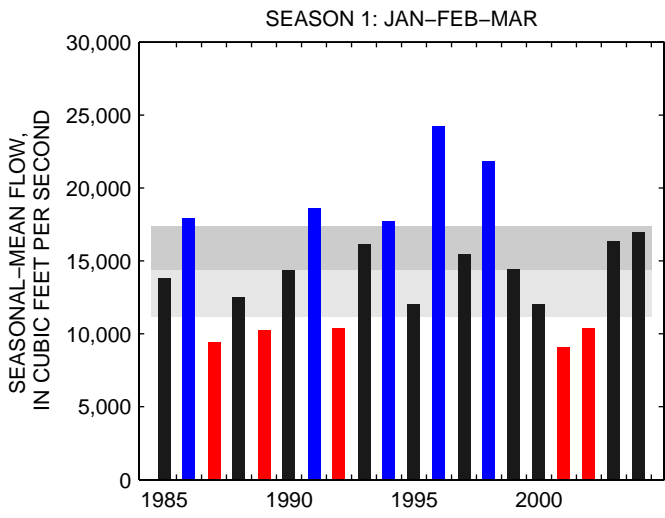
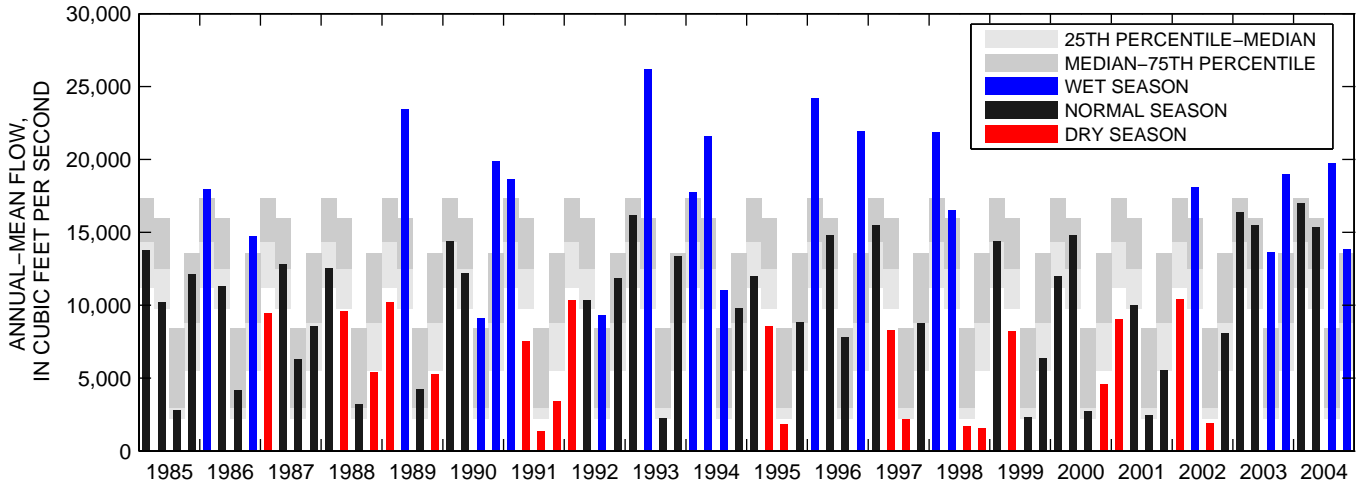
01531500:SUSQUEHANNA RIVER AT TOWANDA, PA



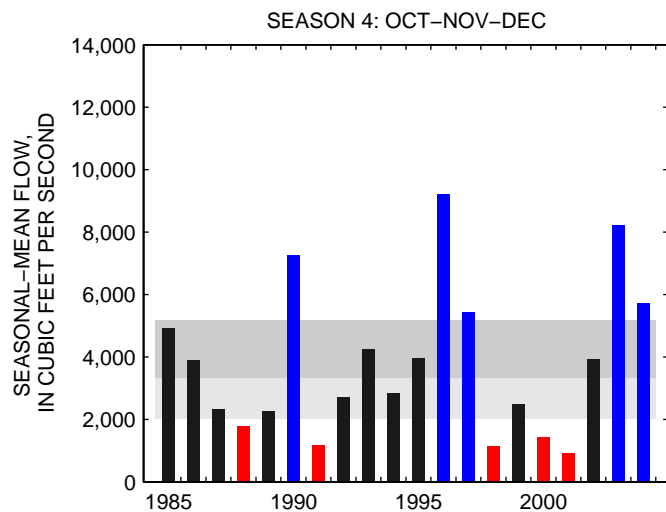
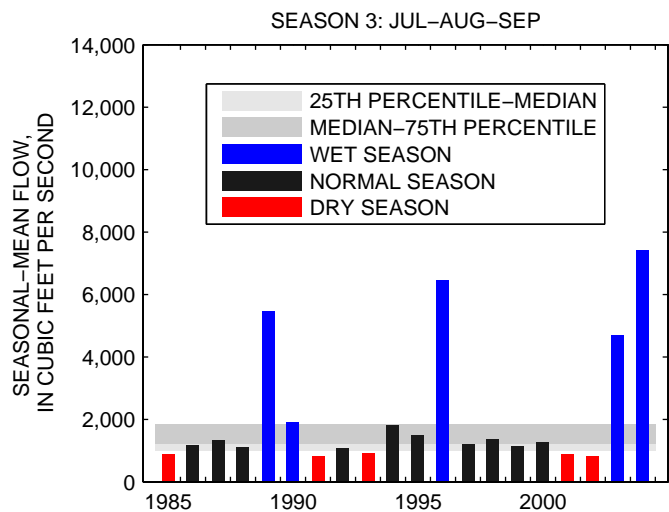
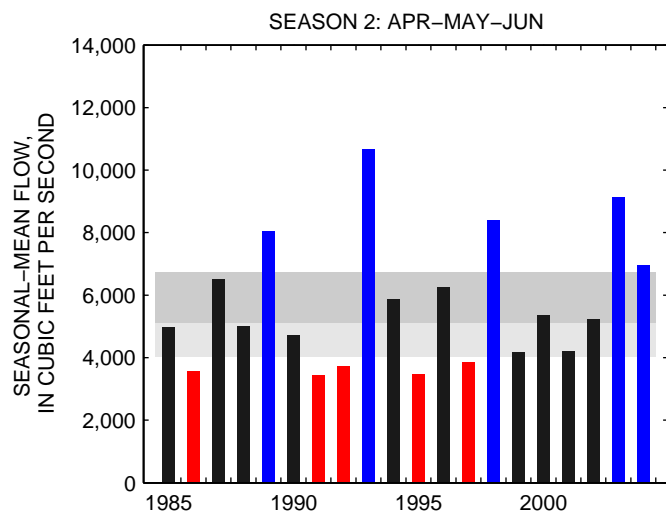
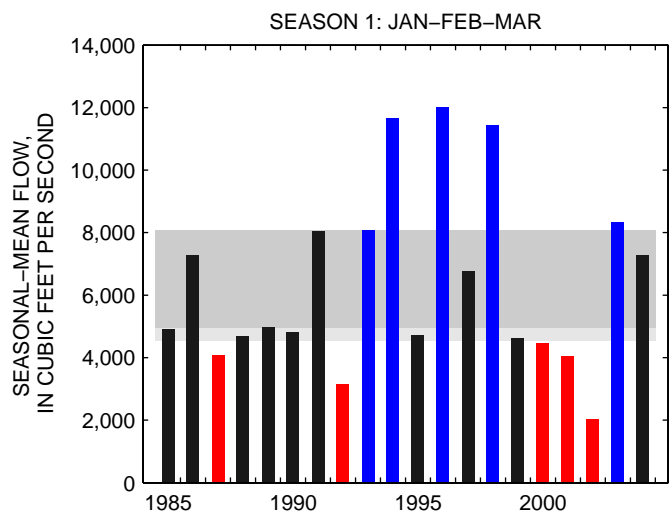
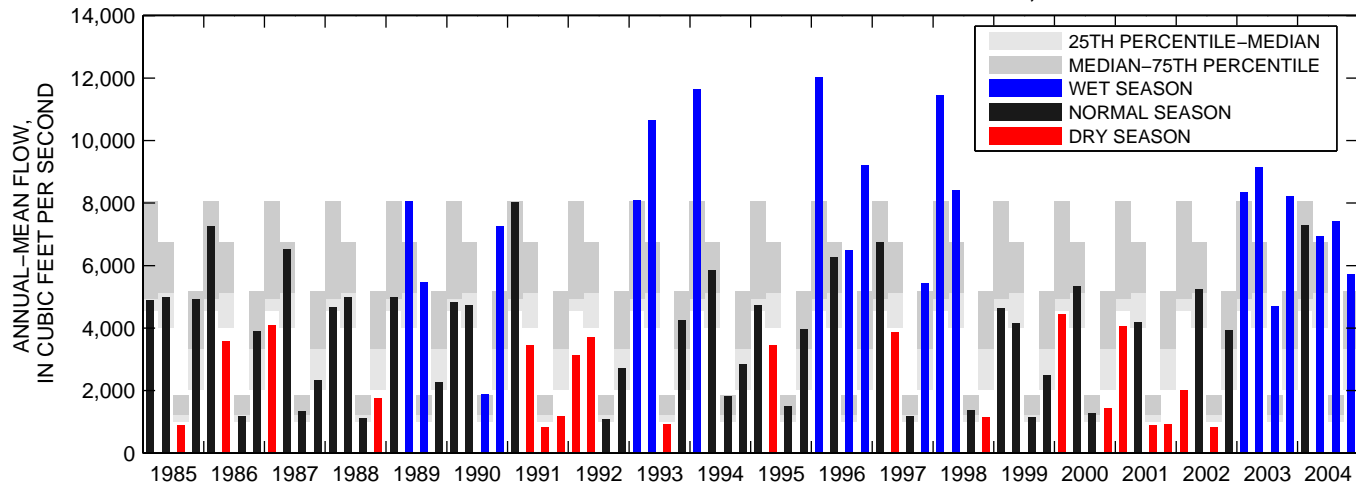
01540500:SUSQUEHANNA RIVER AT DANVILLE, PA



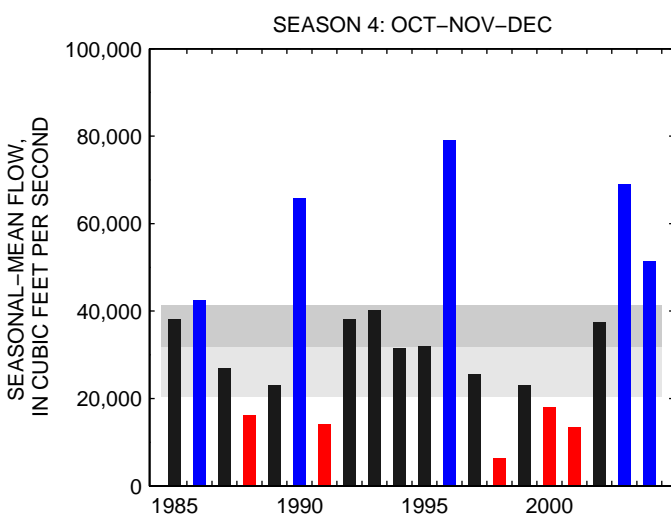
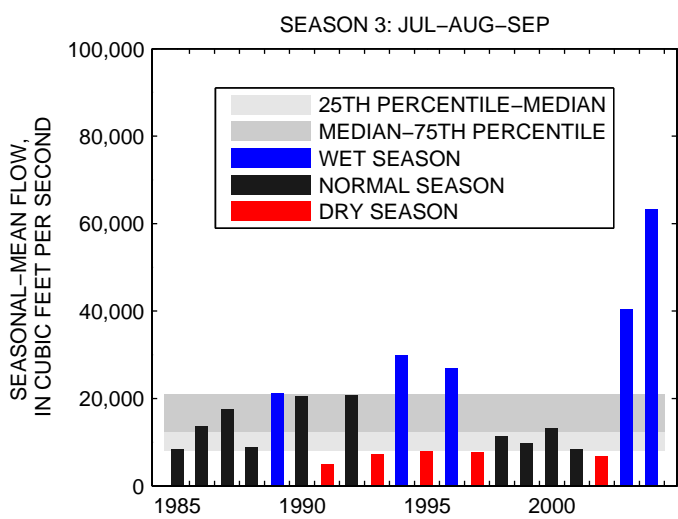
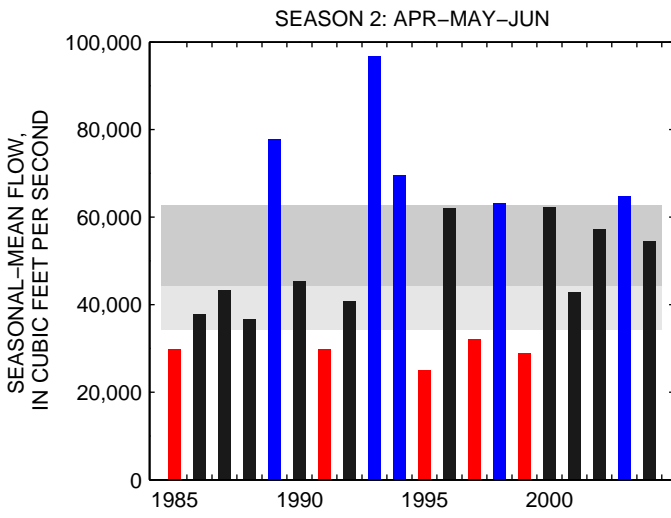
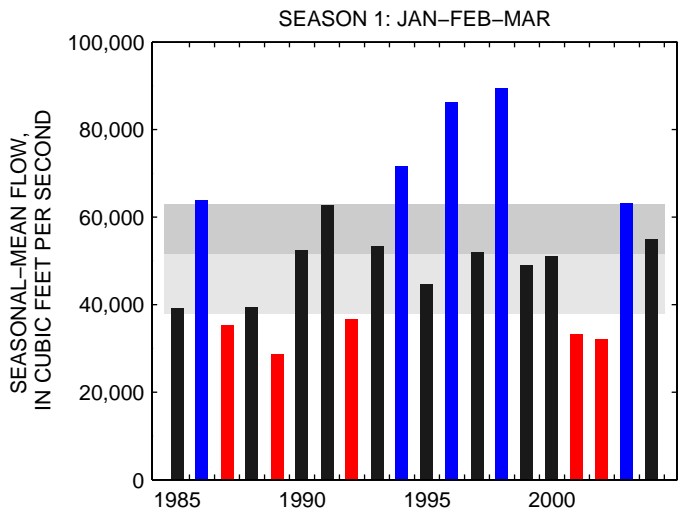
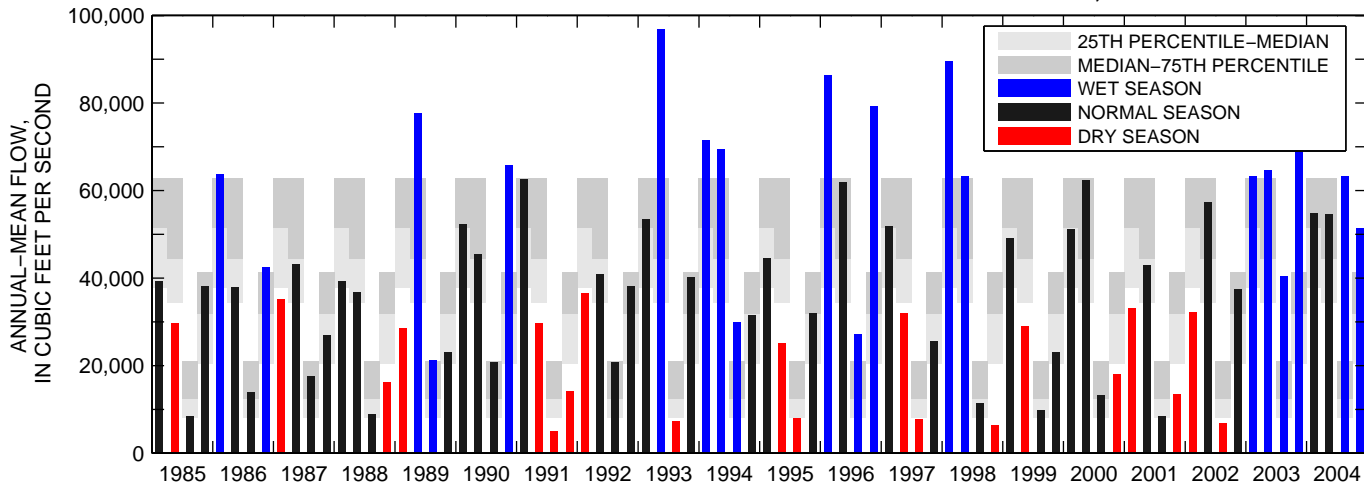
01553500:WEST BRANCH SUSQUEHANNA RIVER AT LEWISBURG, PA



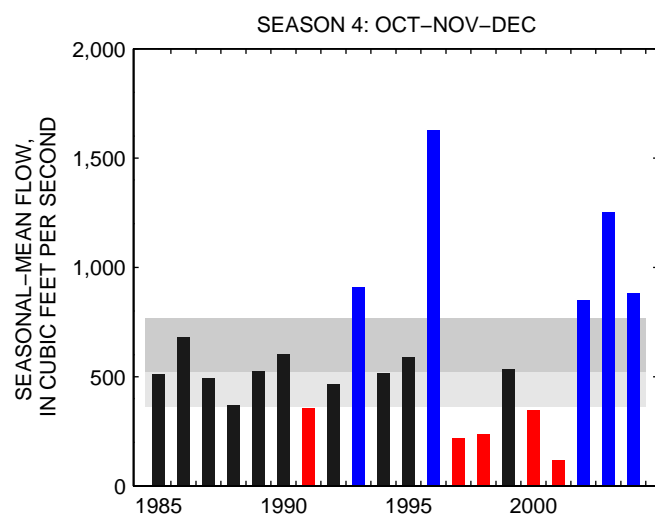
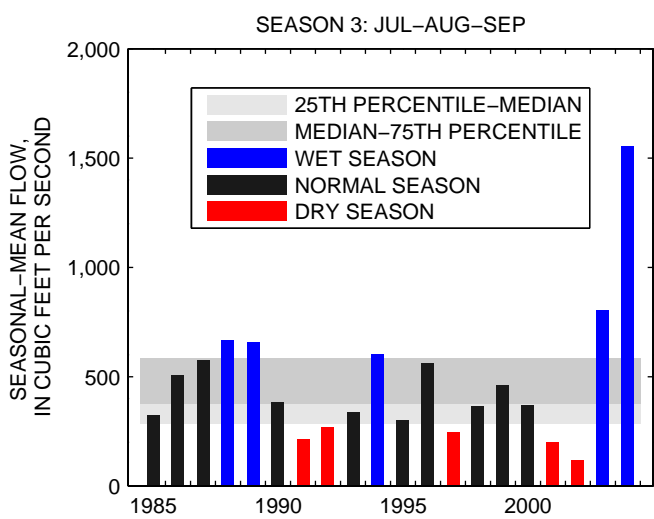
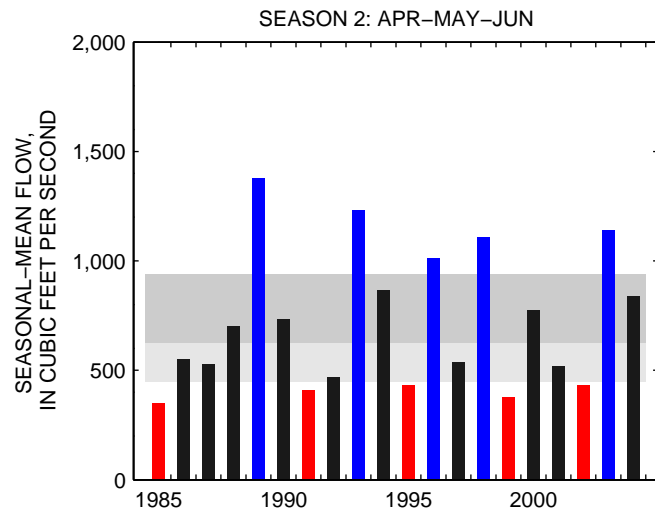
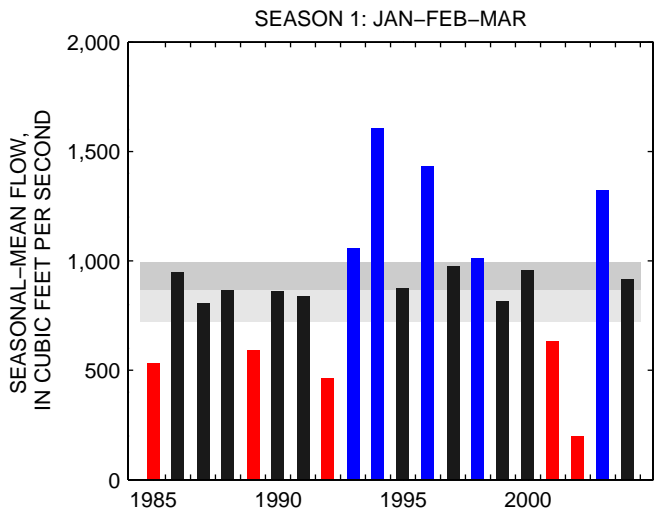
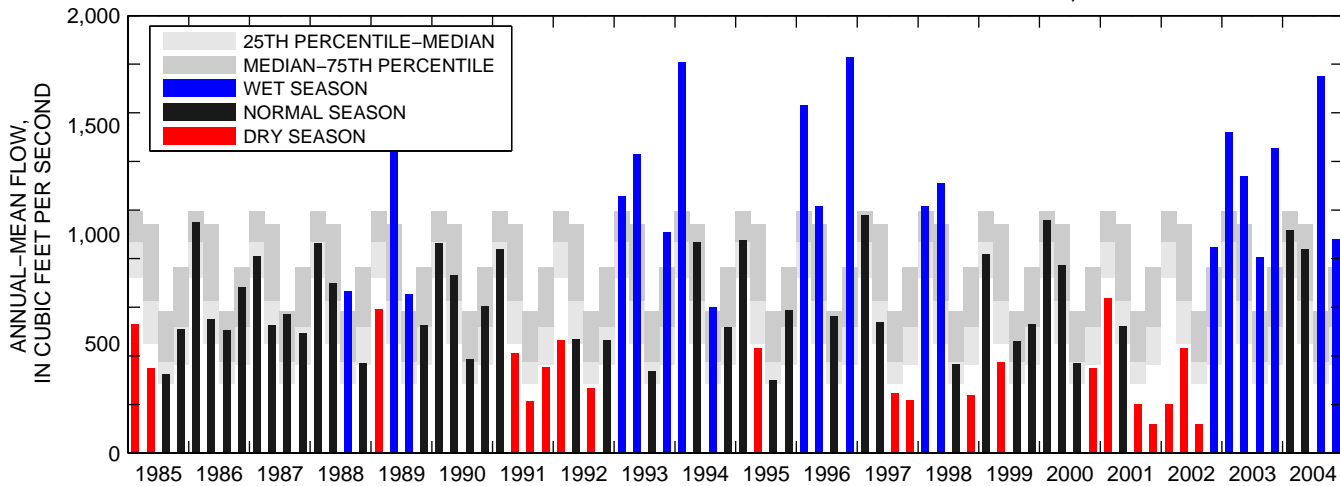
01567000:JUNIATA RIVER AT NEWPORT, PA



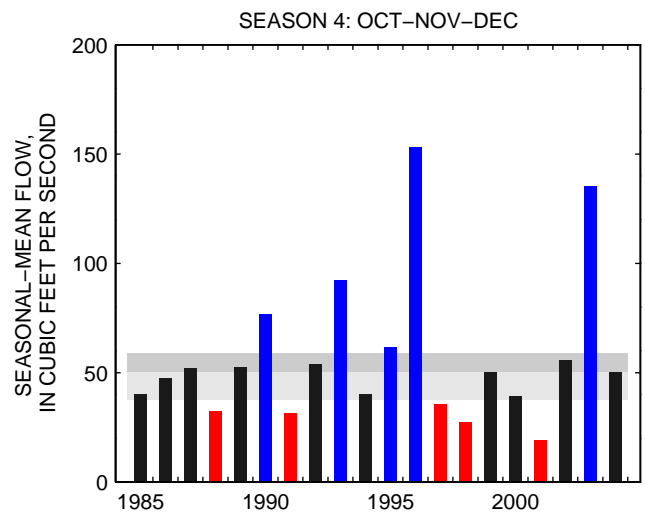
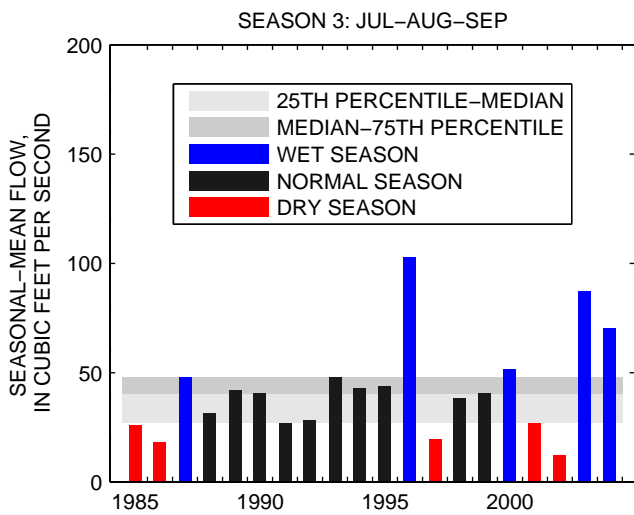
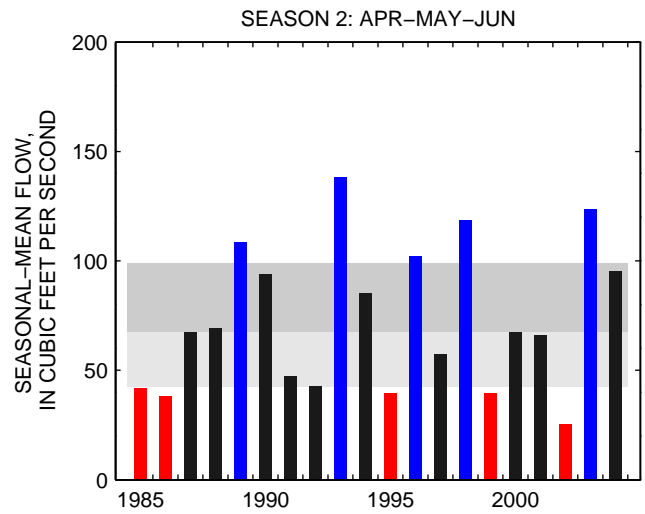
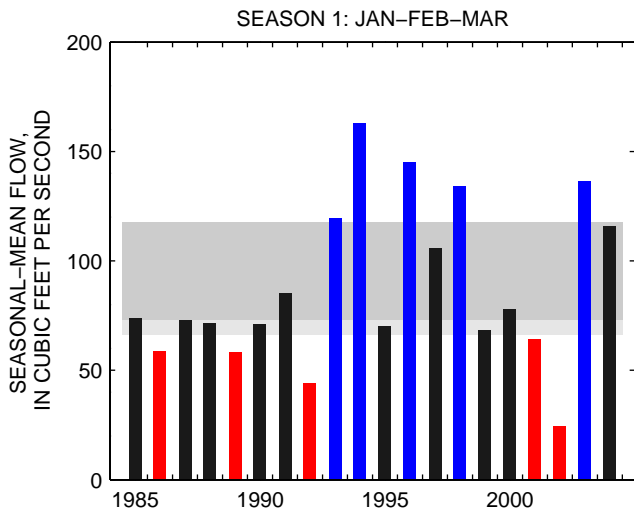
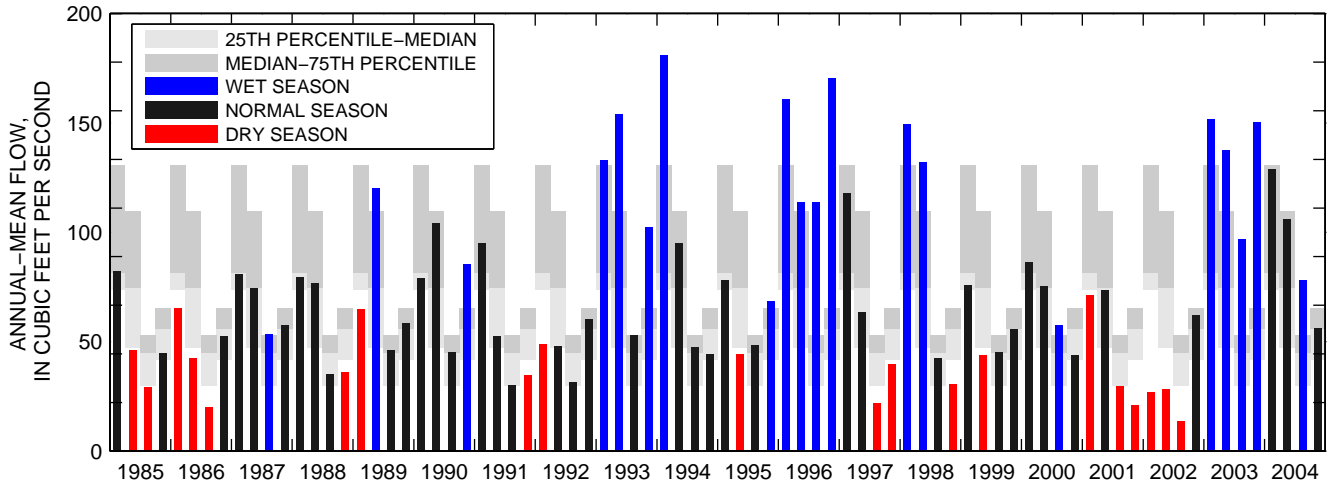
01576000:SUSQUEHANNA RIVER AT MARIETTA, PA



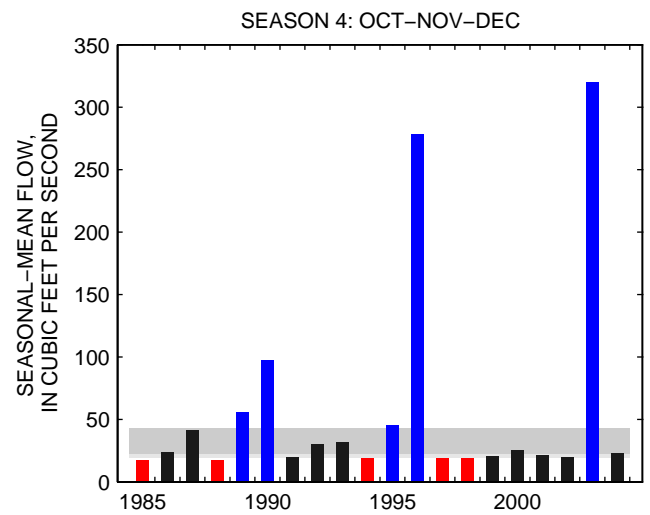
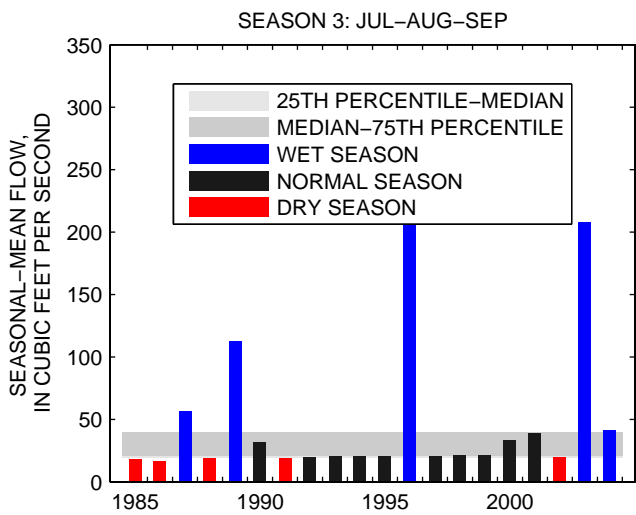
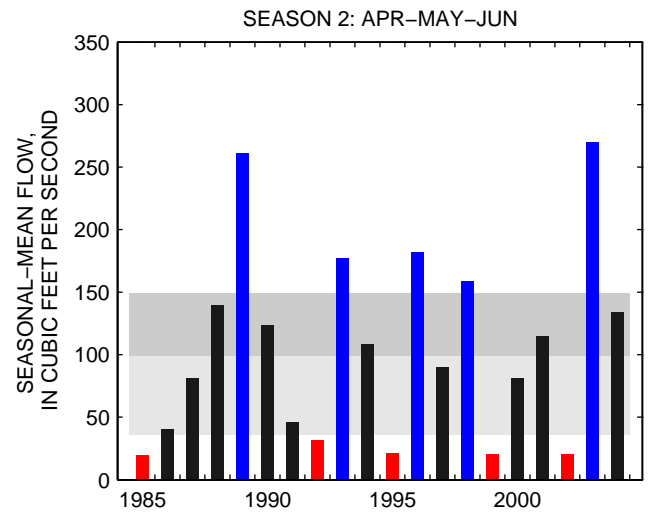
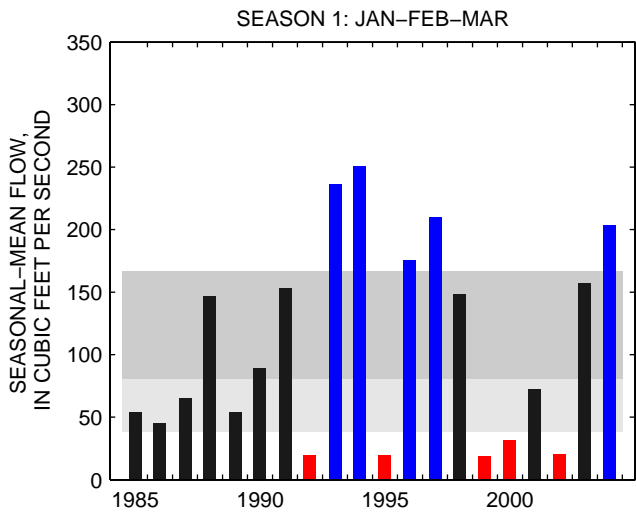
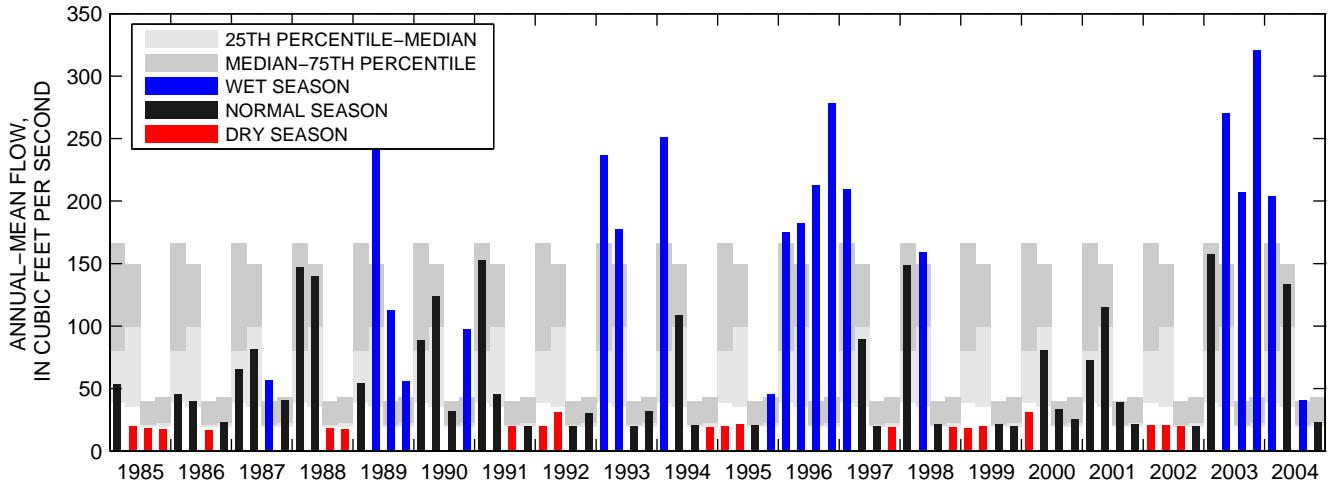
01576754: CONESTOGA RIVER AT CONESTOGA, PA



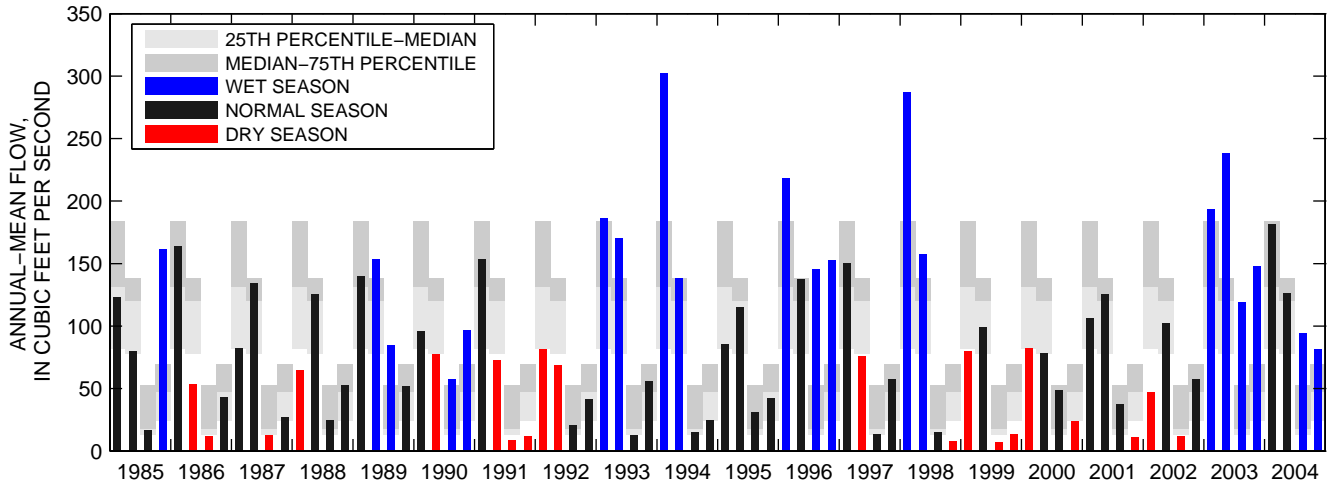
01586000:NORTH BRANCH PATAPSCO RIVER AT CEDARHURST, MD



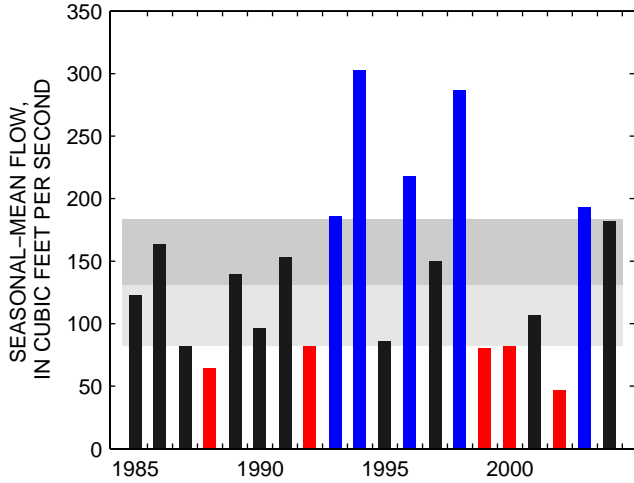
01592500: PATUXENT RIV NEAR LAUREL, MD



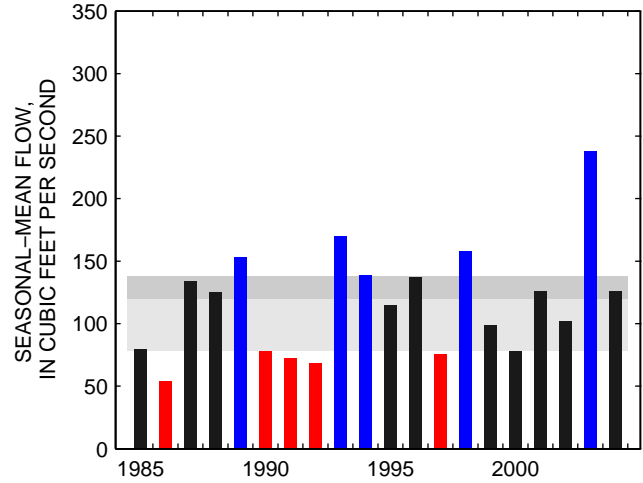
01599000:GEORGES CREEK AT FRANKLIN, MD



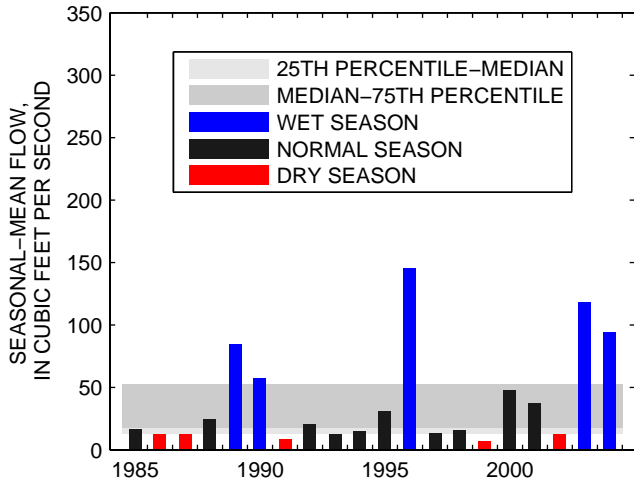
SEASON 1: JAN-FEB-MAR



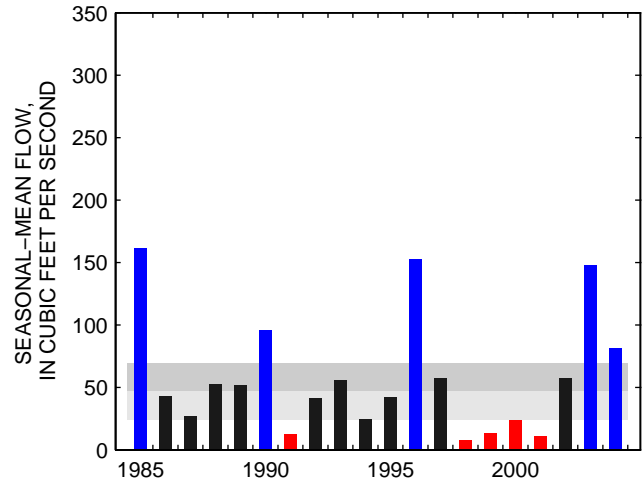
SEASON 2: APR-MAY-JUN



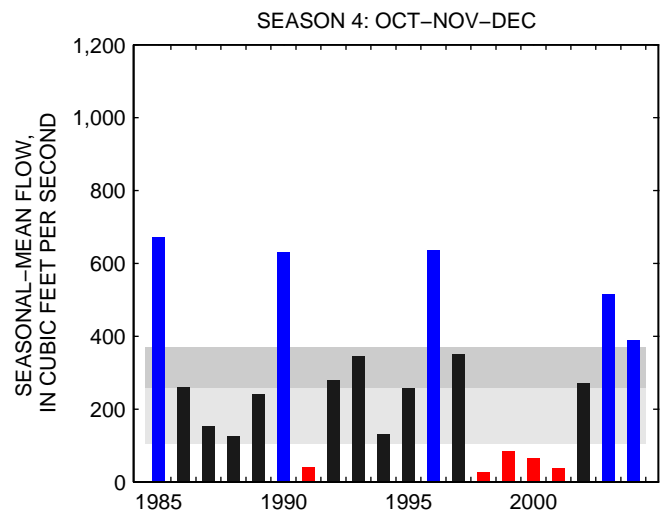
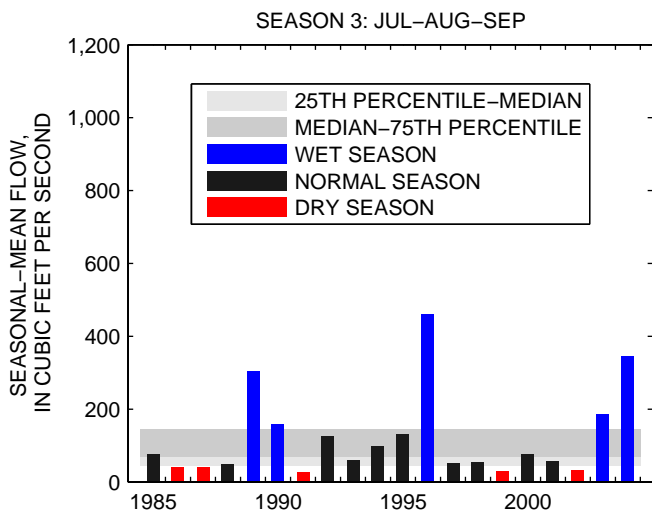
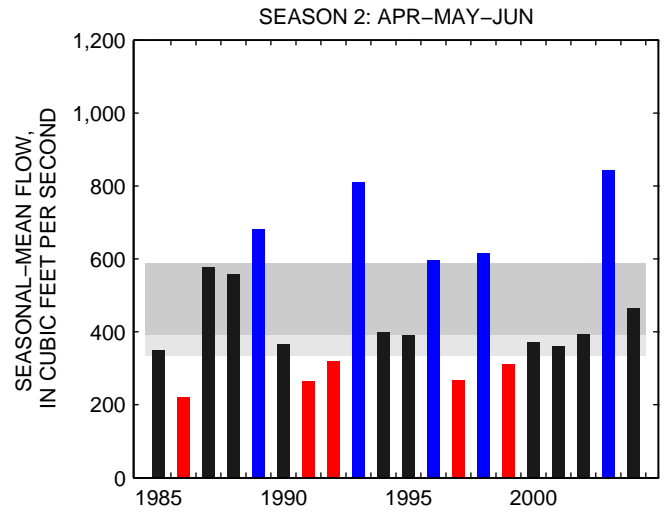
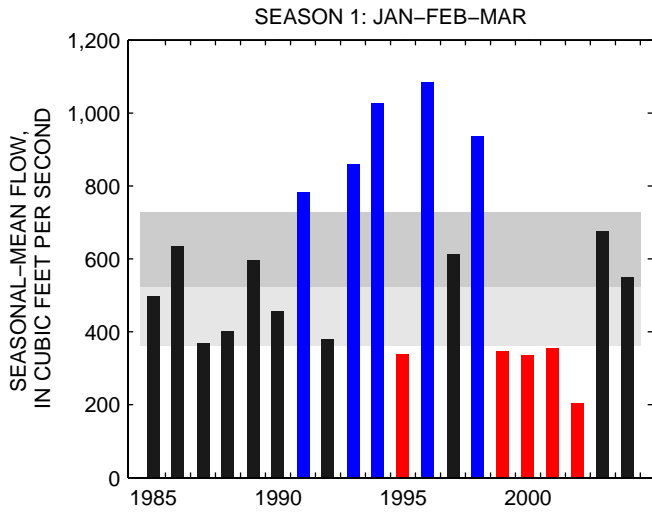
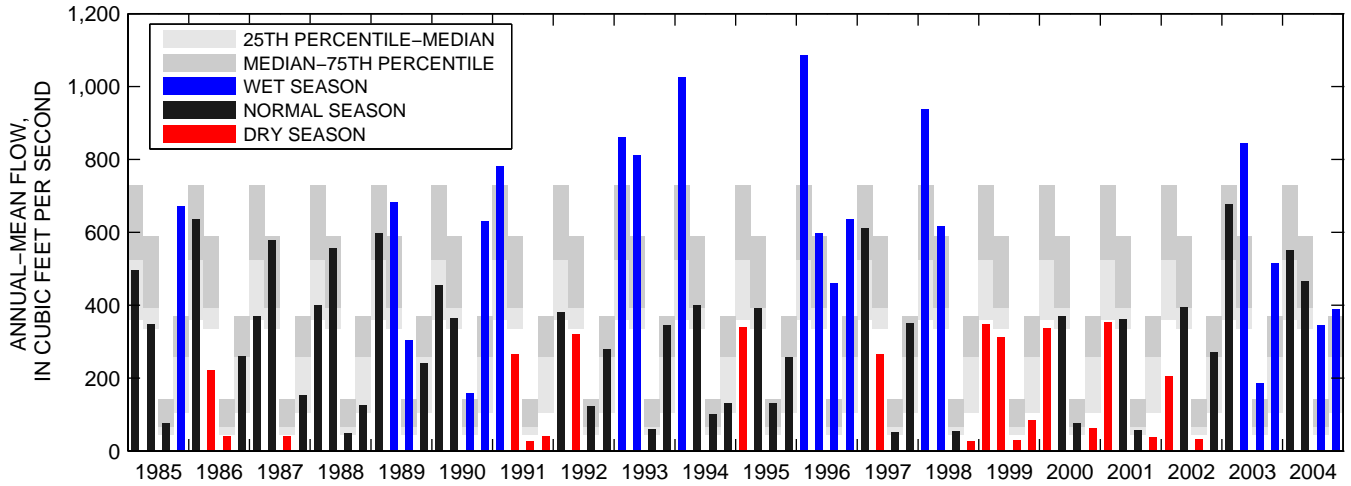
SEASON 3: JUL-AUG-SEP



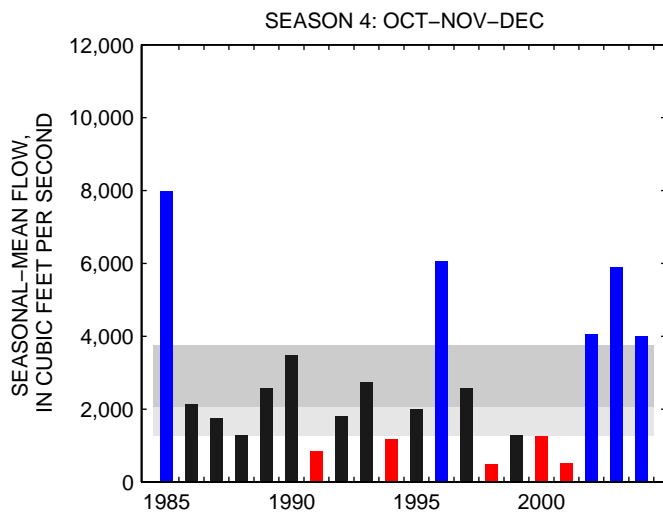
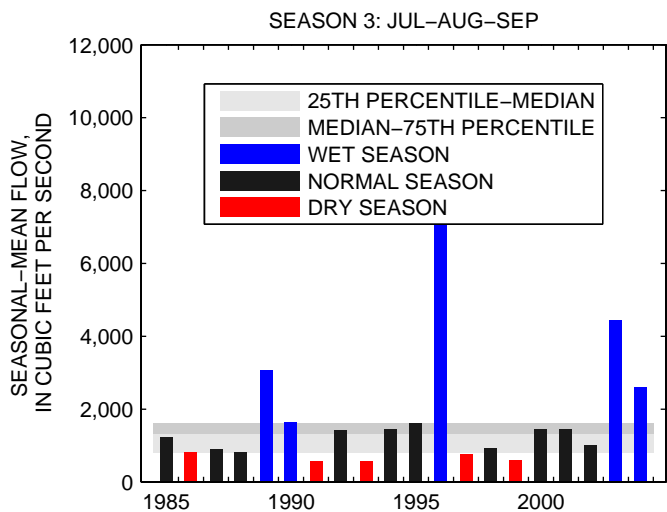
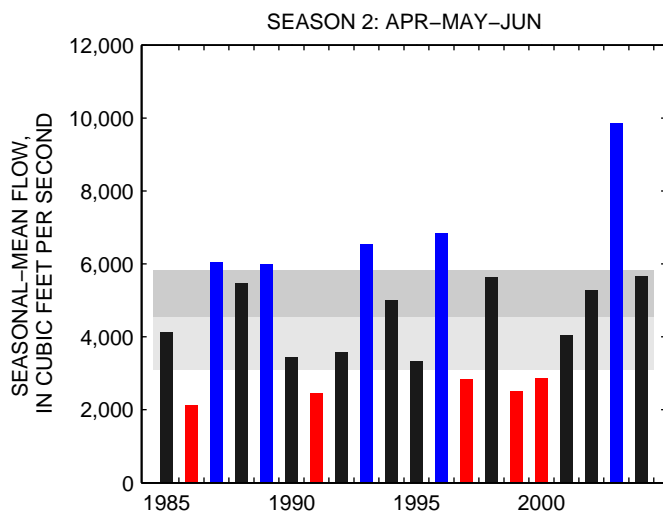
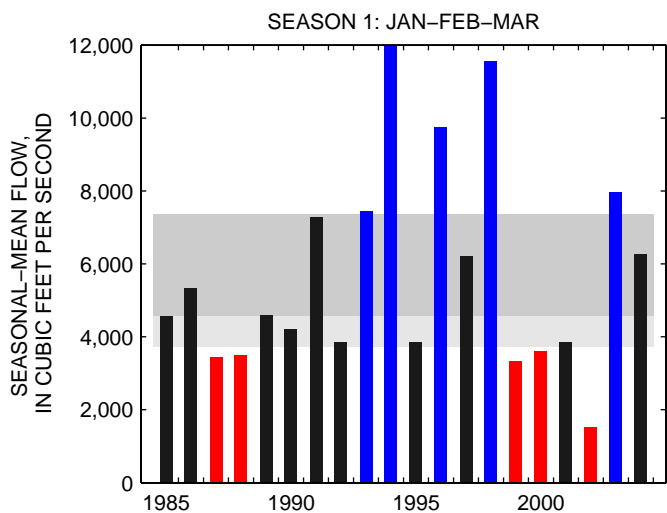
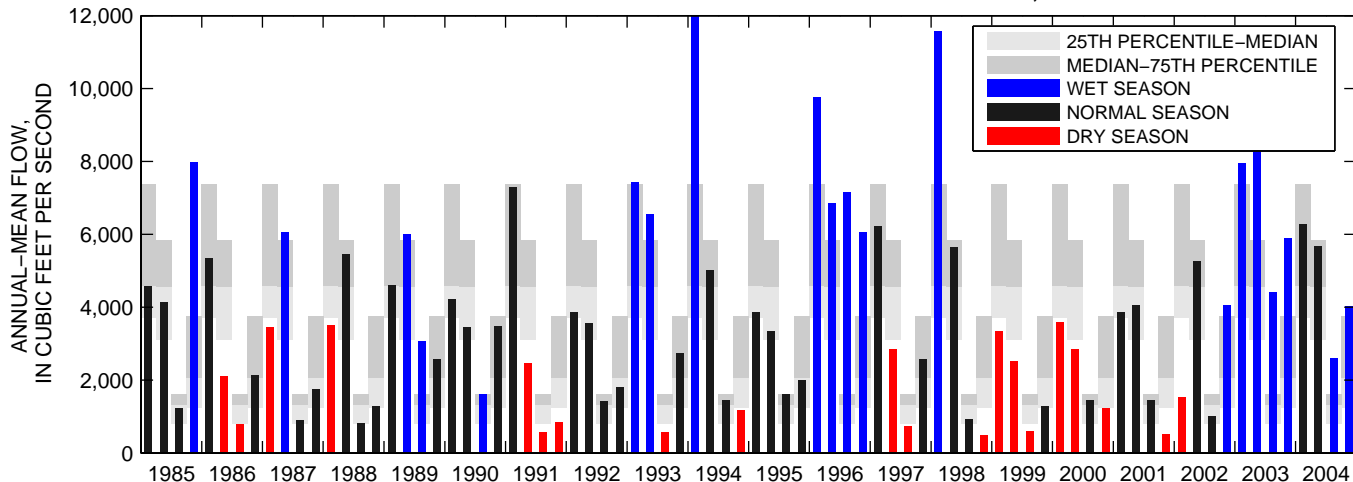
SEASON 4: OCT-NOV-DEC



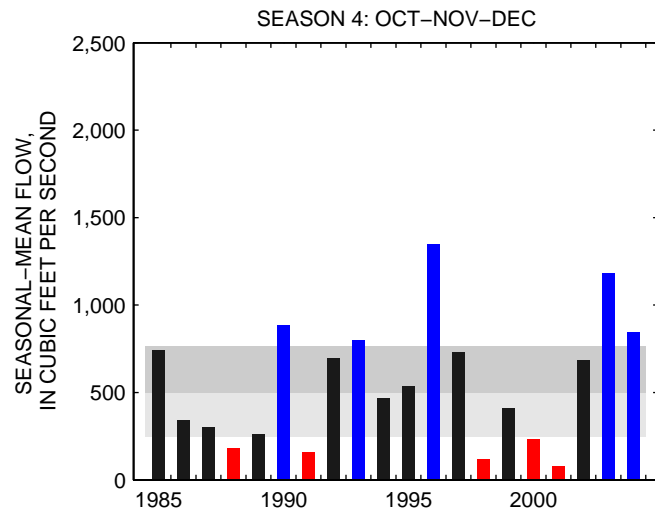
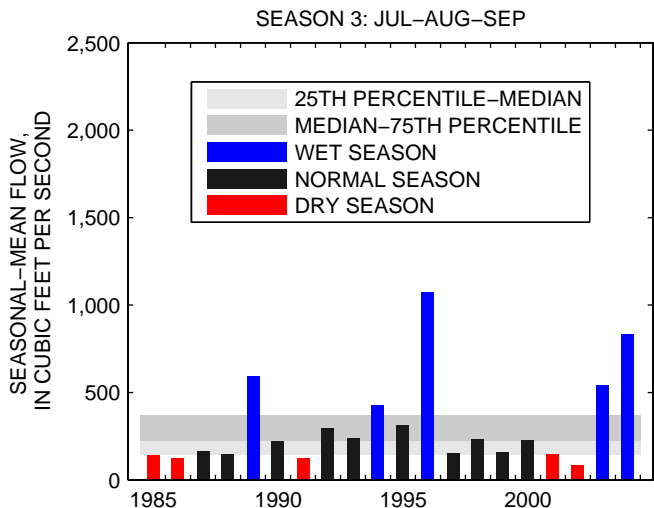
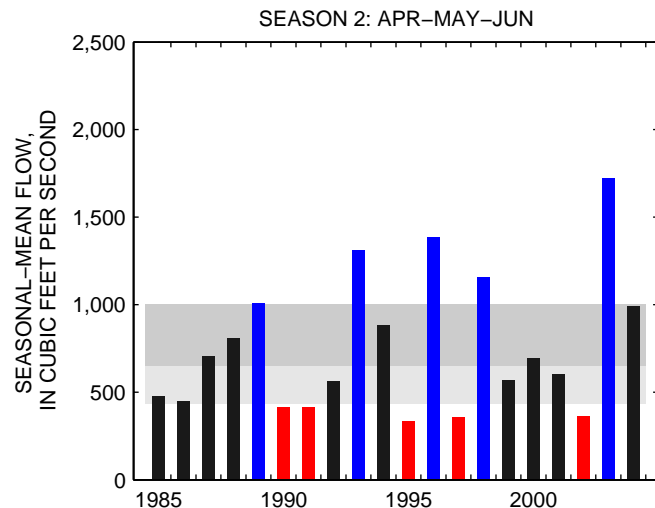
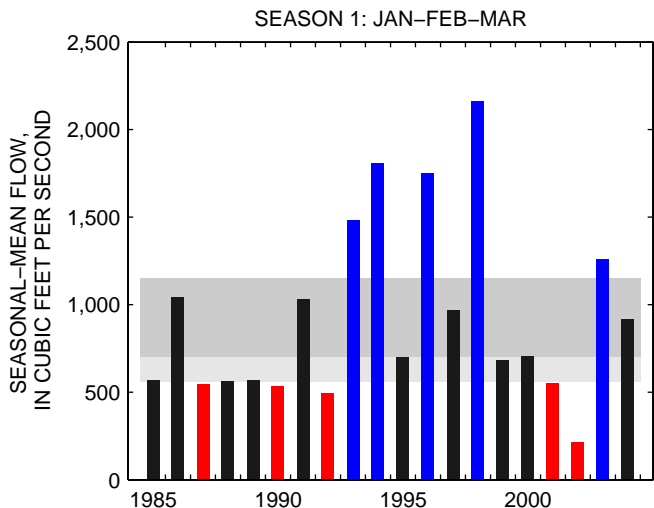
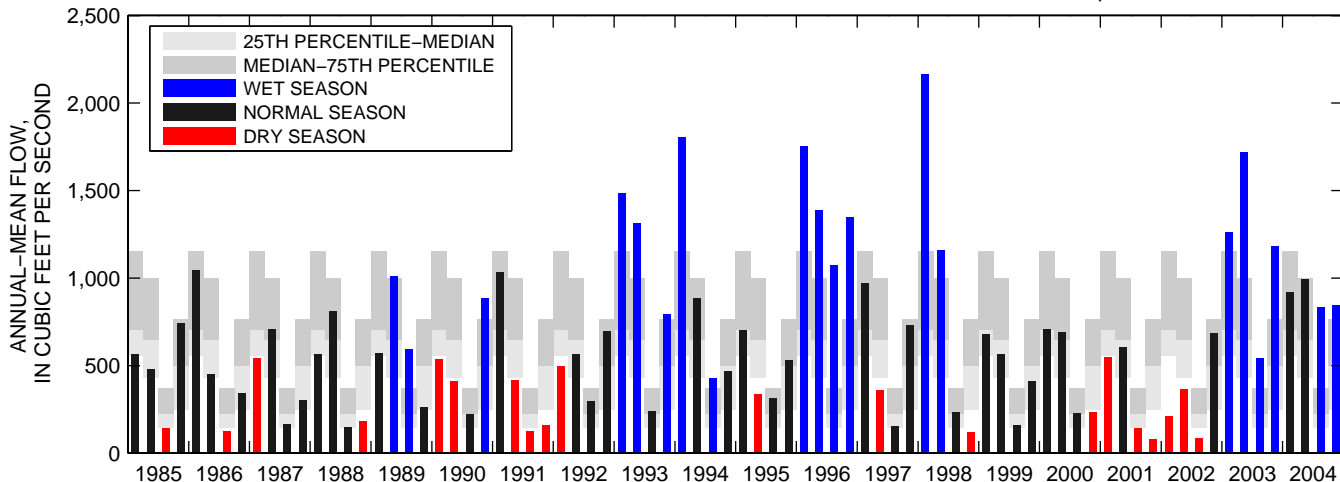
01601500:WILLS CREEK NEAR CUMBERLAND, MD



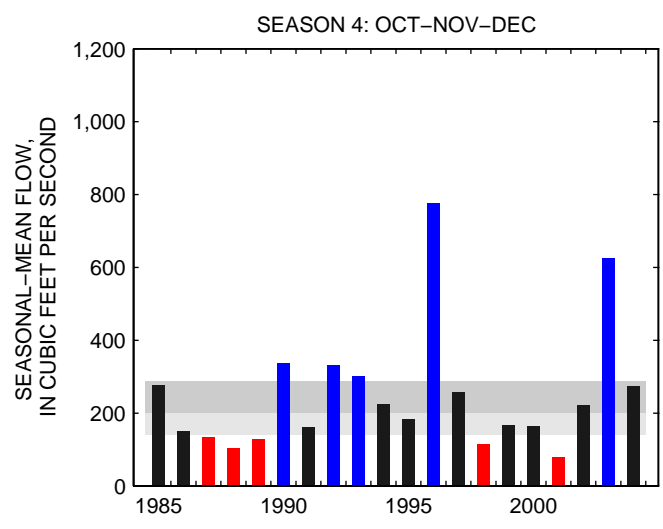
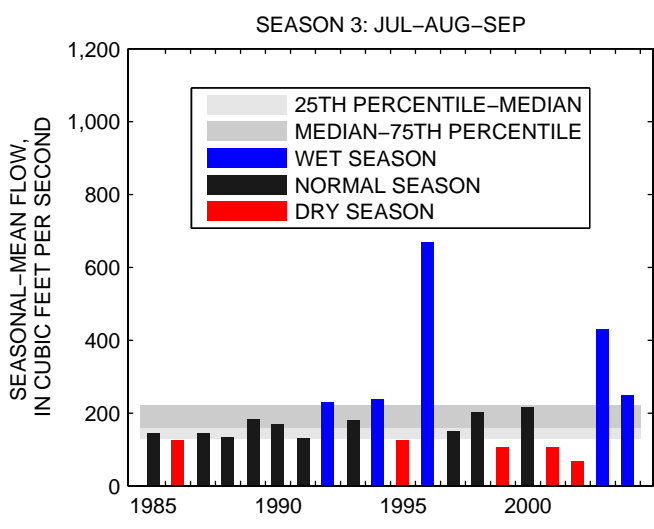
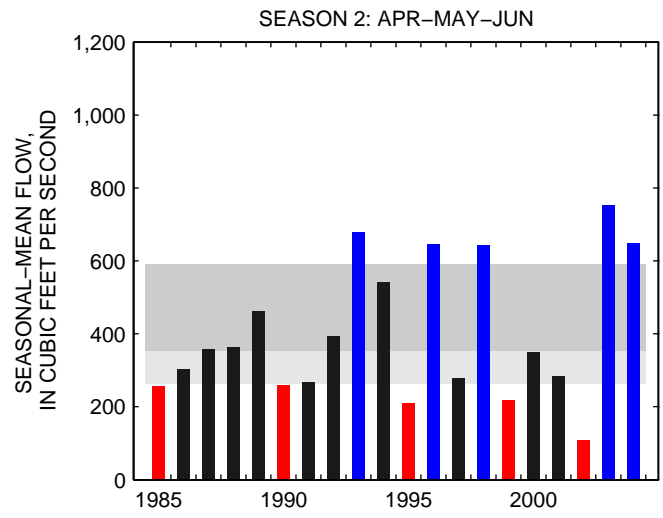
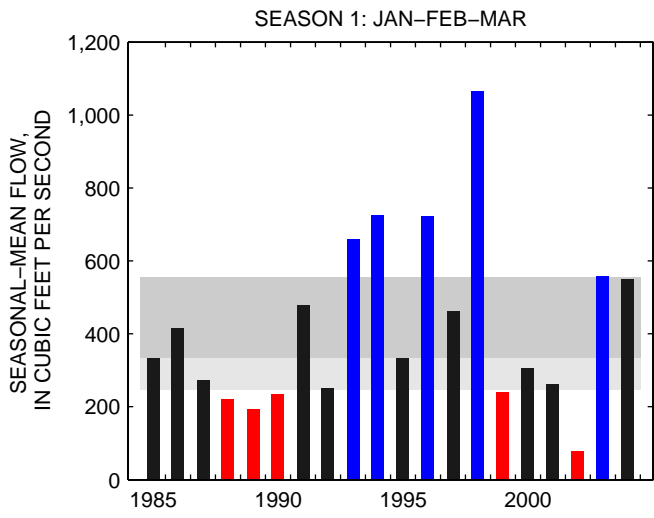
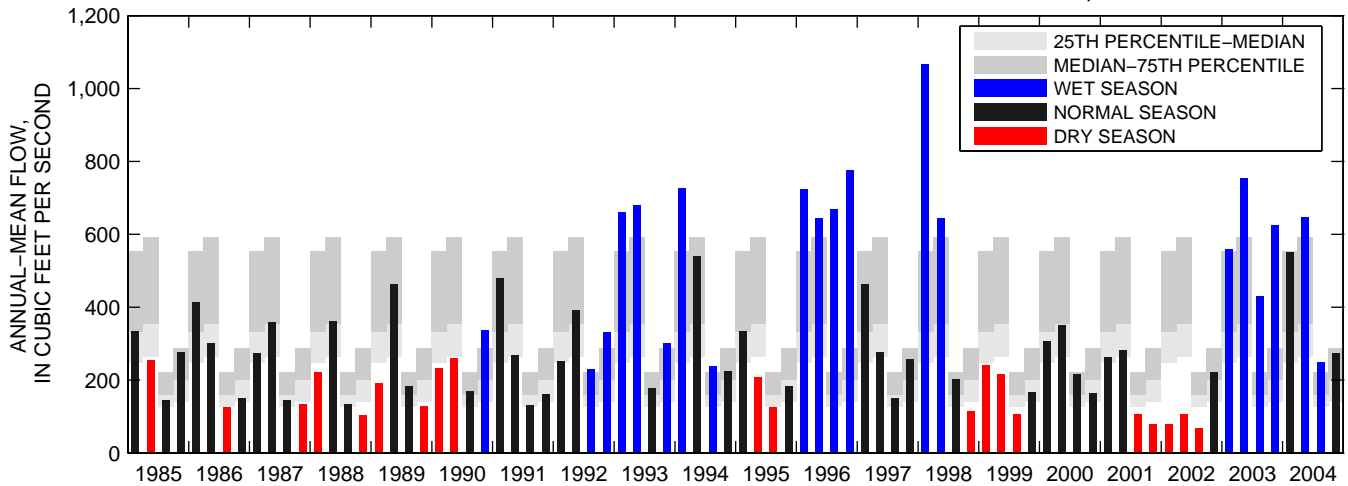
01610000:POTOMAC RIVER AT PAW PAW, WV



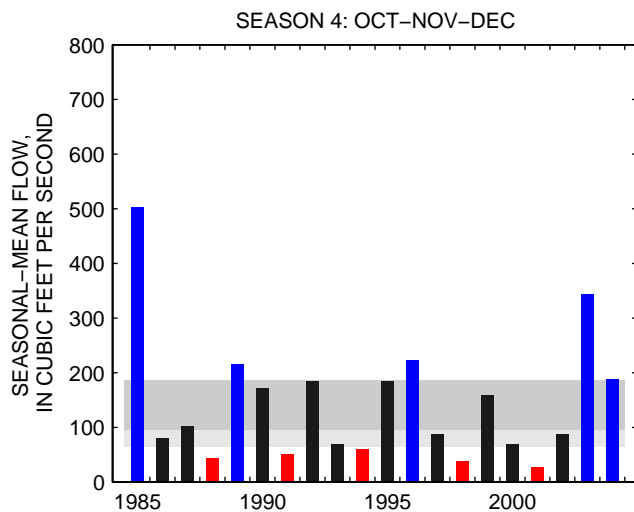
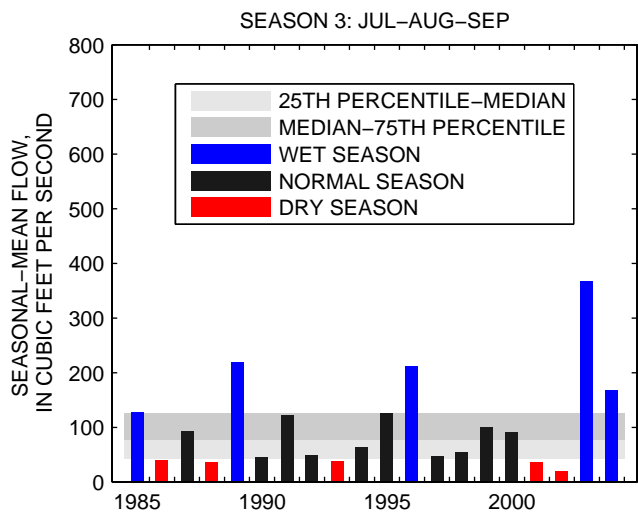
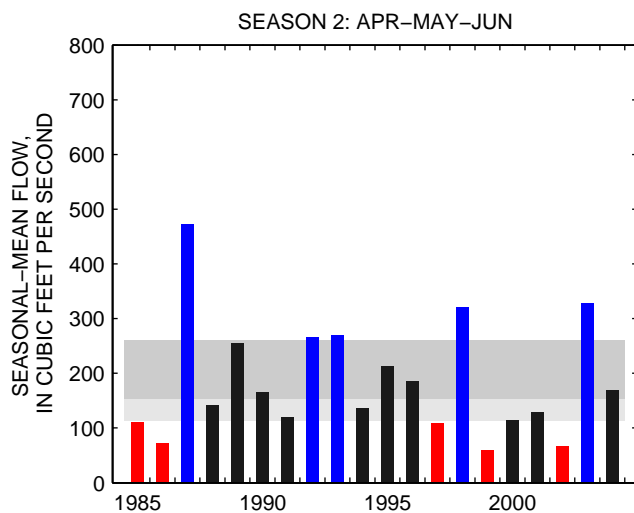
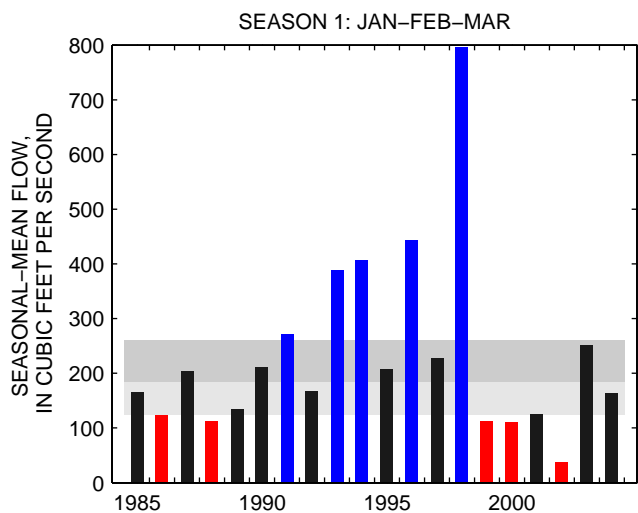
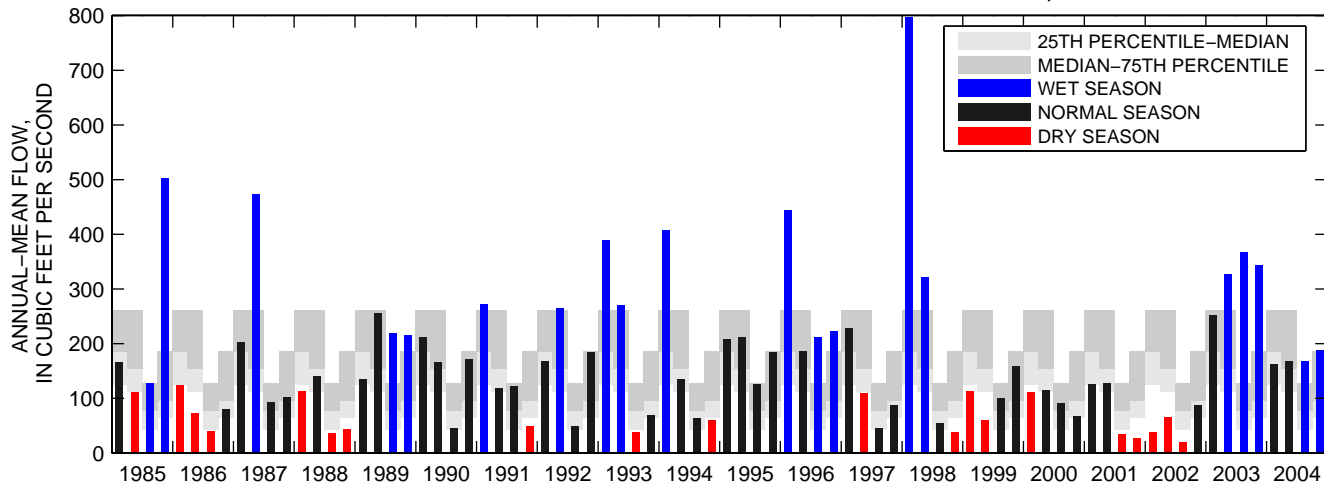
01614500:CONOCOCHEAGUE CREEK AT FAIRVIEW, MD



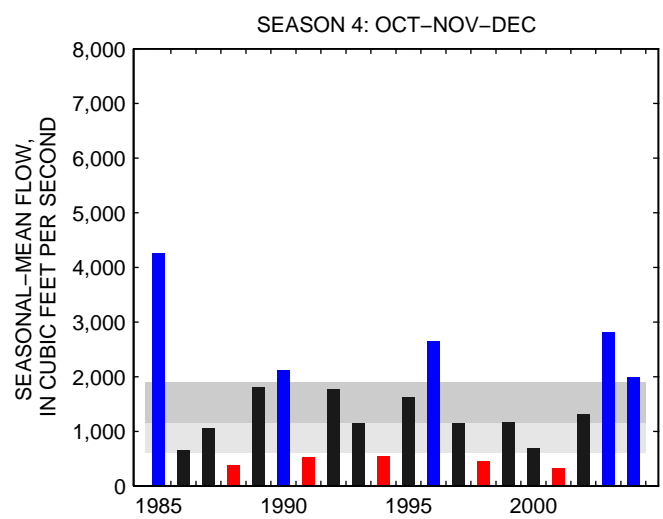
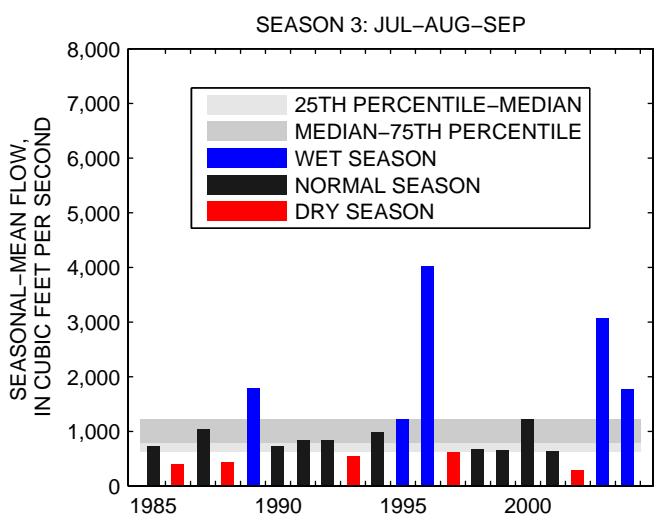
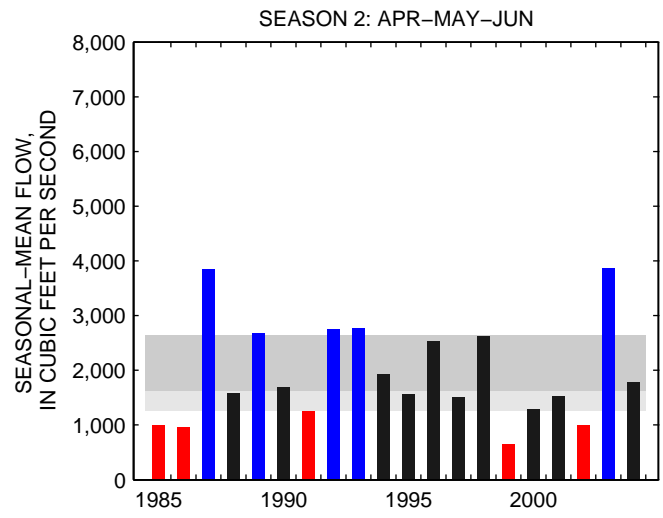
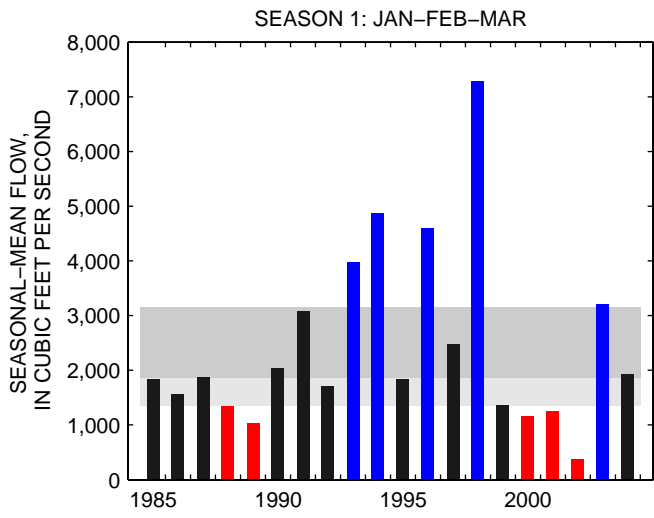
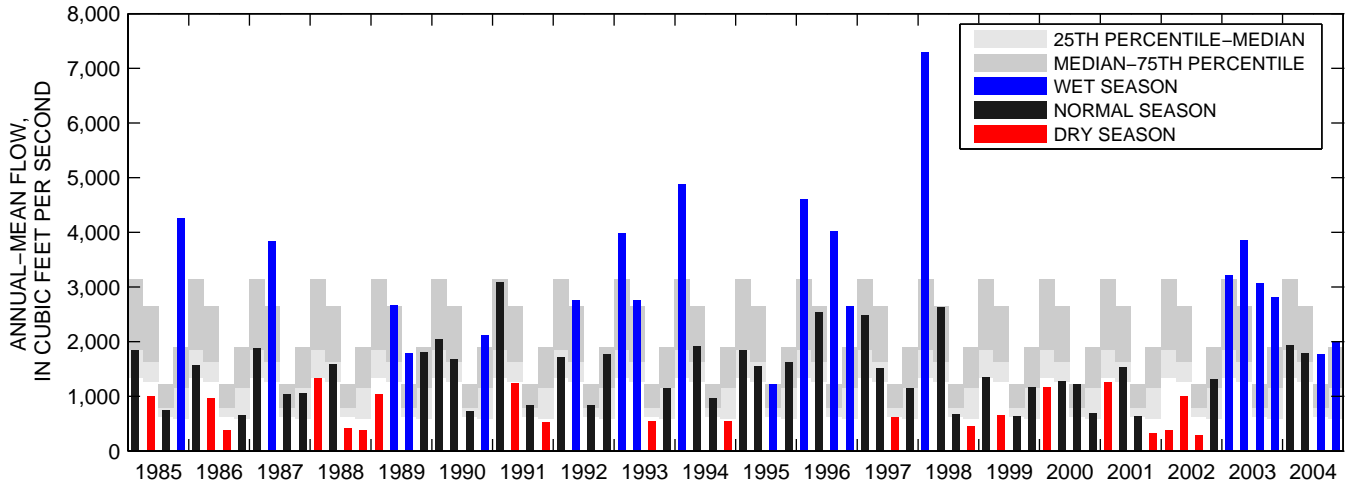
01619500:ANTIETAM CREEK NEAR SHARPSBURG, MD



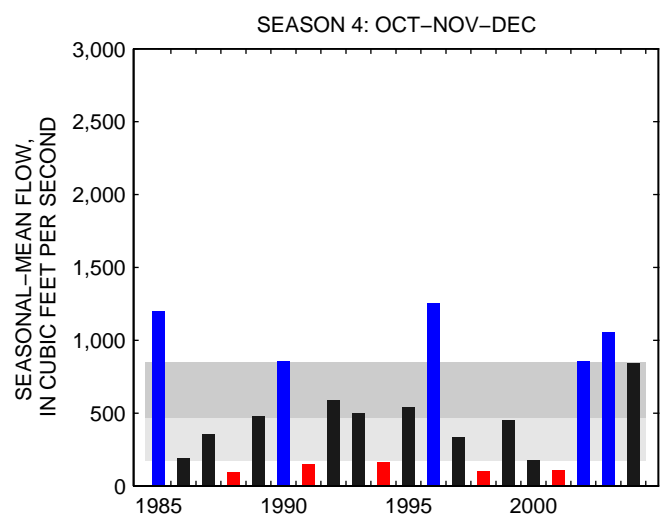
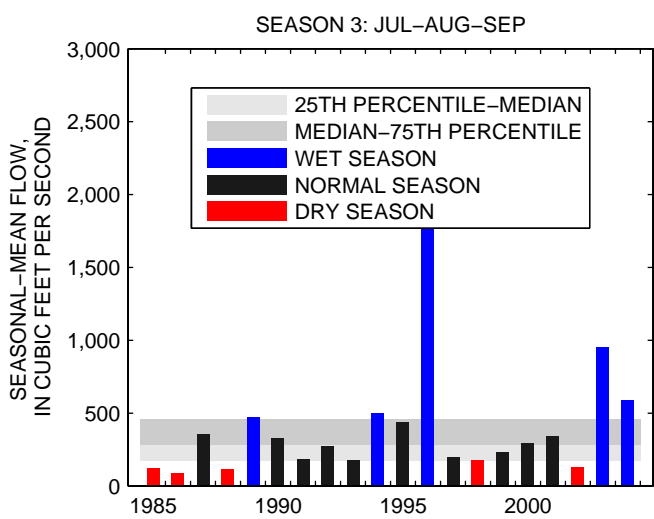
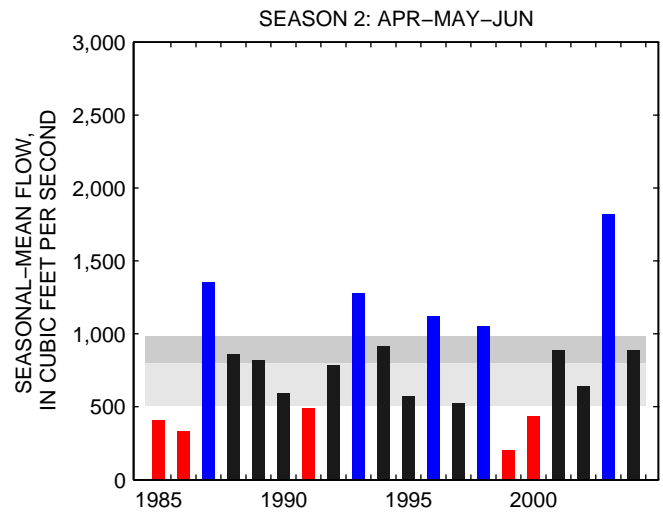
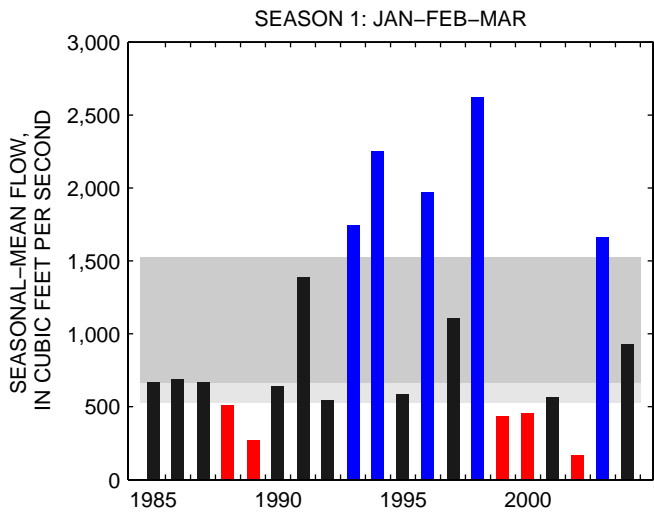
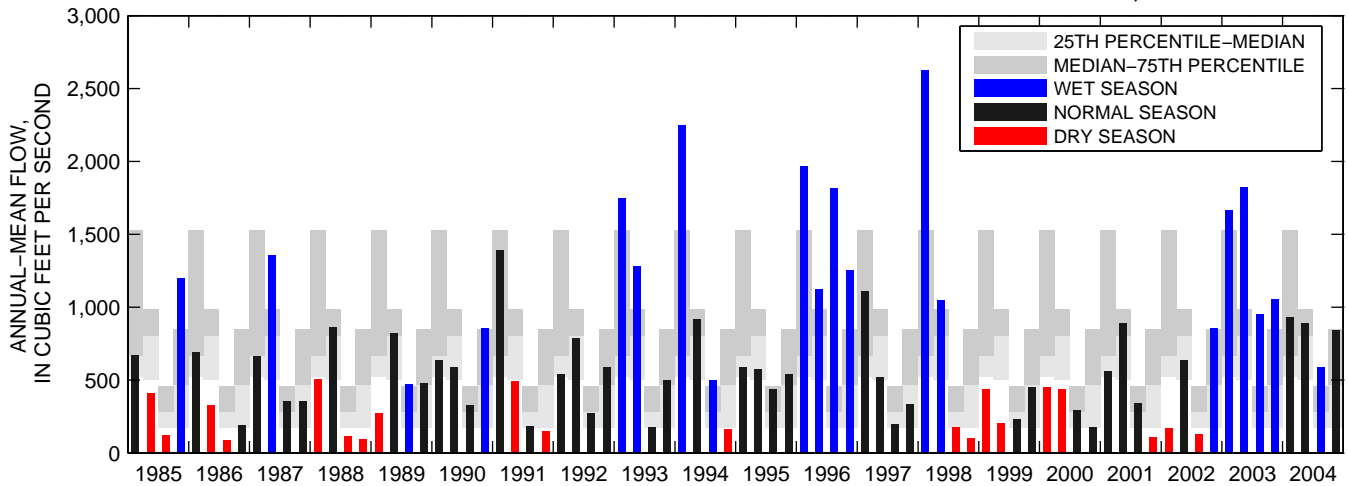
01626000:SOUTH RIVER NEAR WAYNESBORO, VA



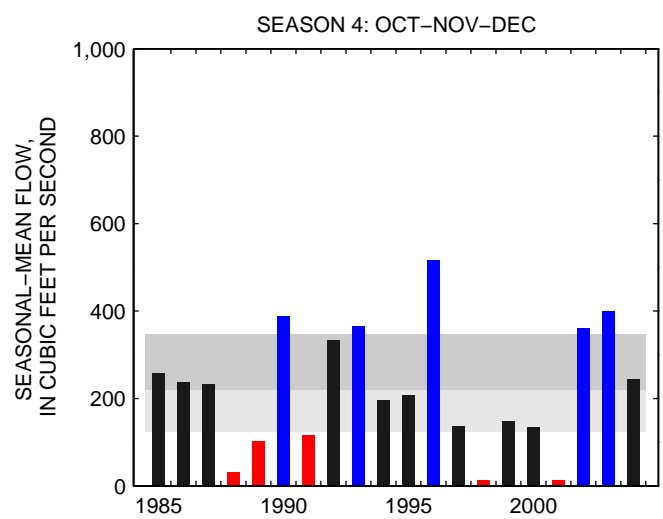
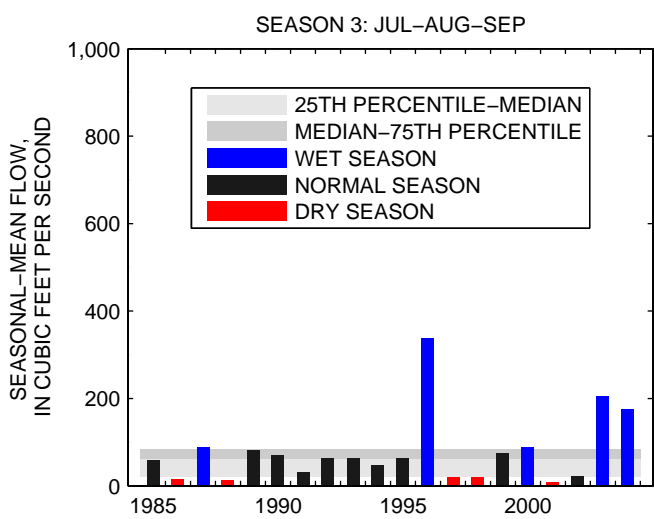
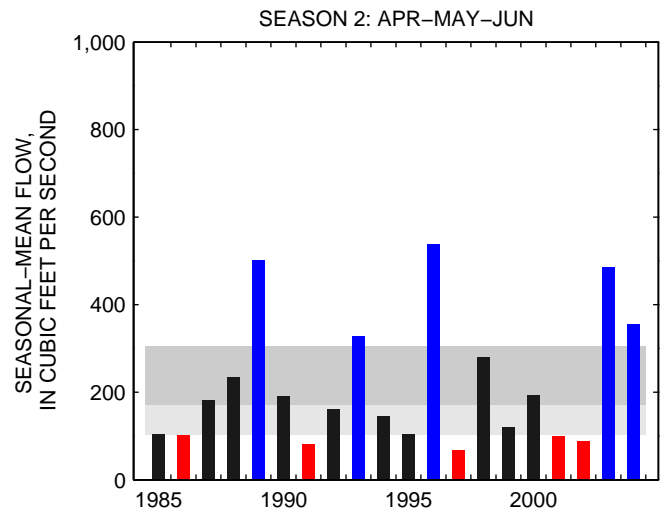
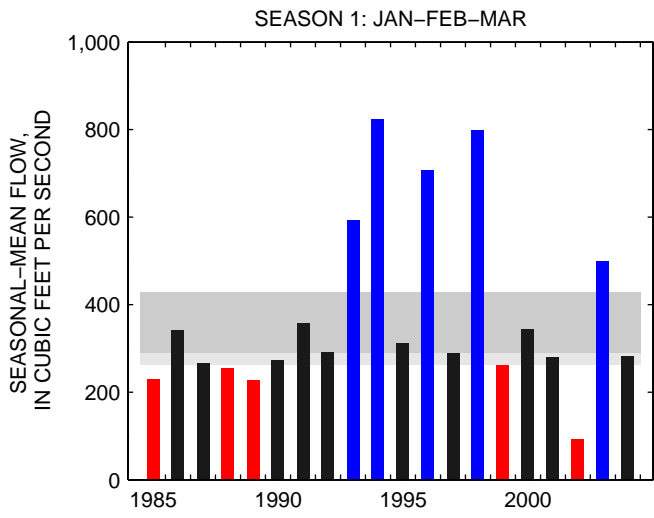
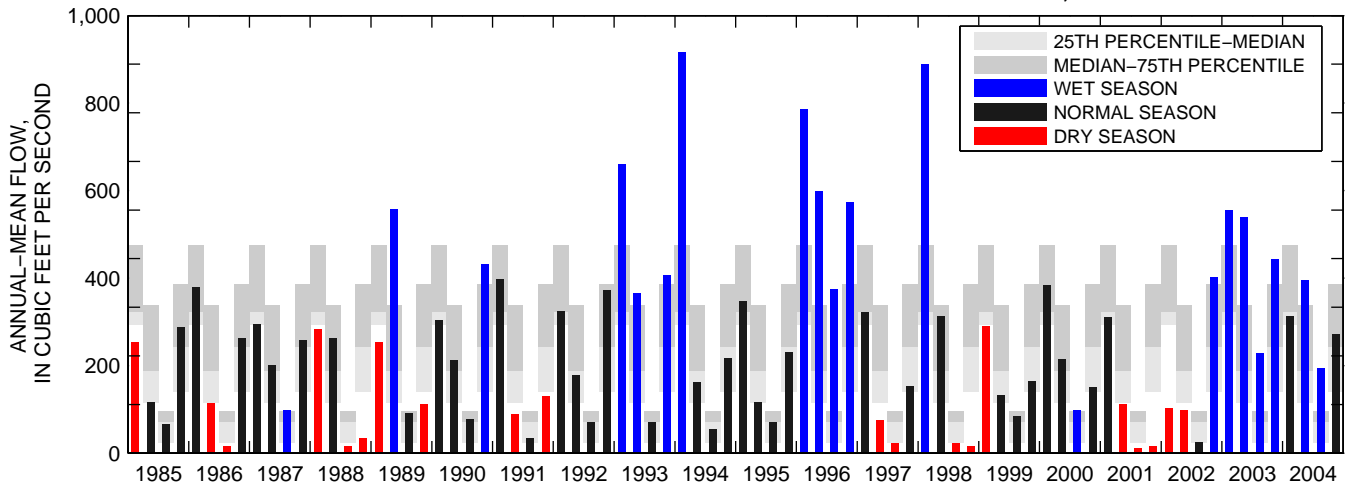
01631000:S F SHENANDOAH RIVER AT FRONT ROYAL, VA



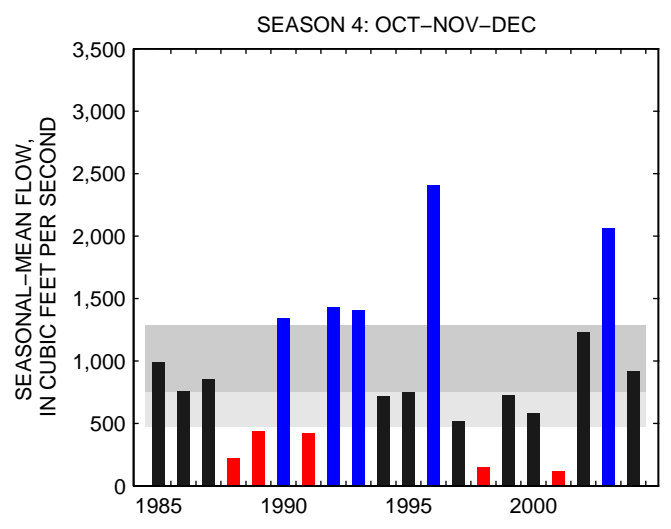
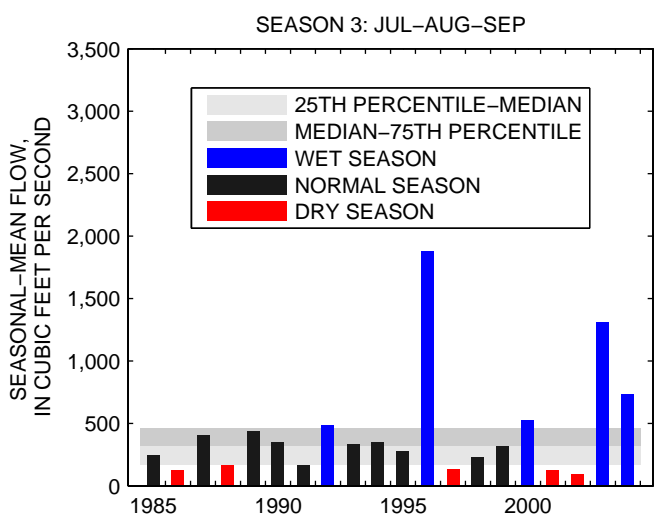
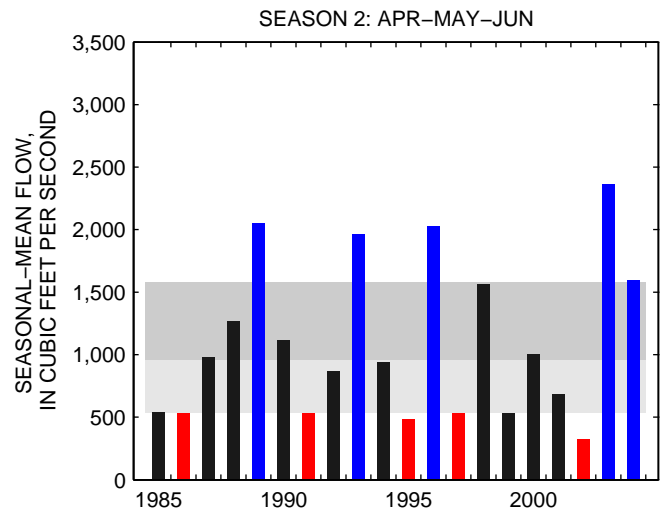
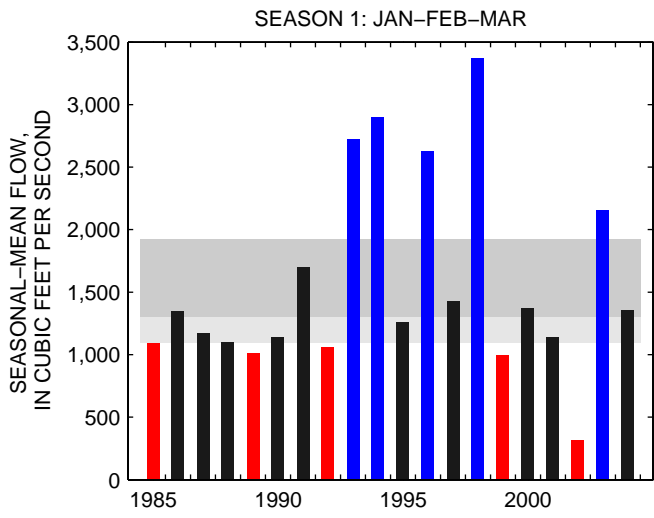
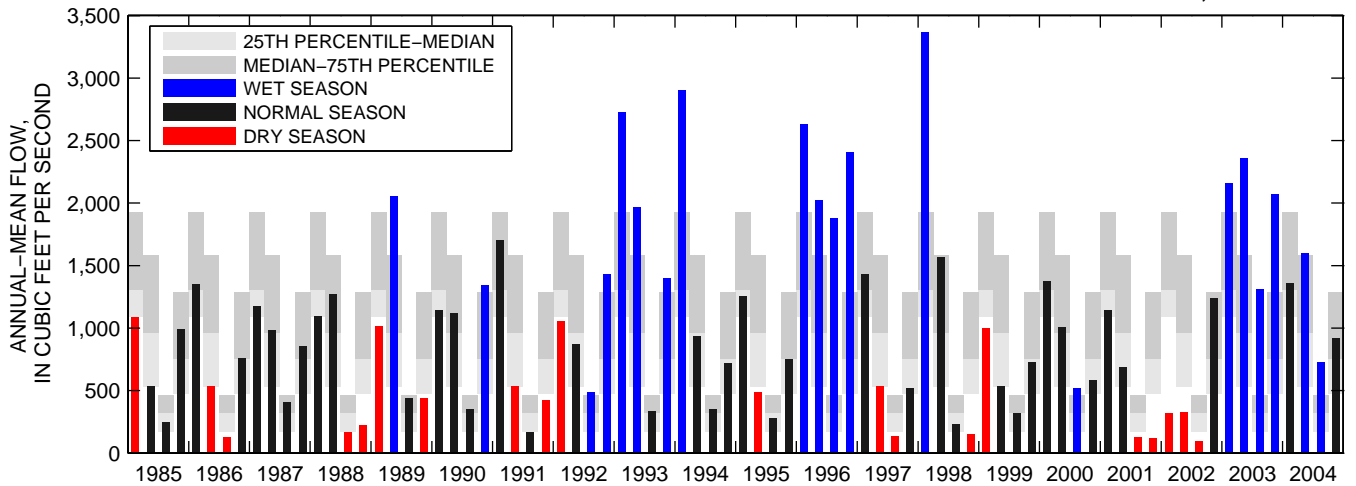
01634000:N F SHENANDOAH RIVER NEAR STRASBURG, VA



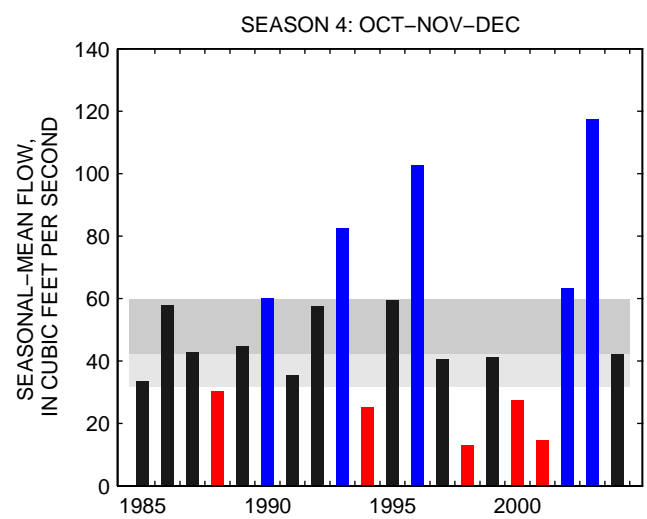
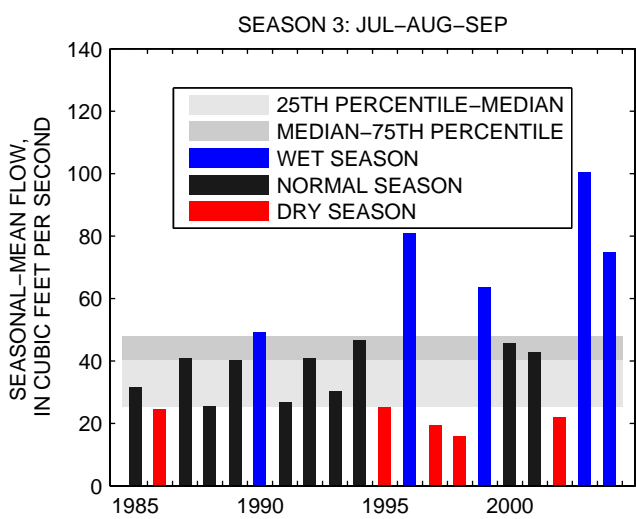
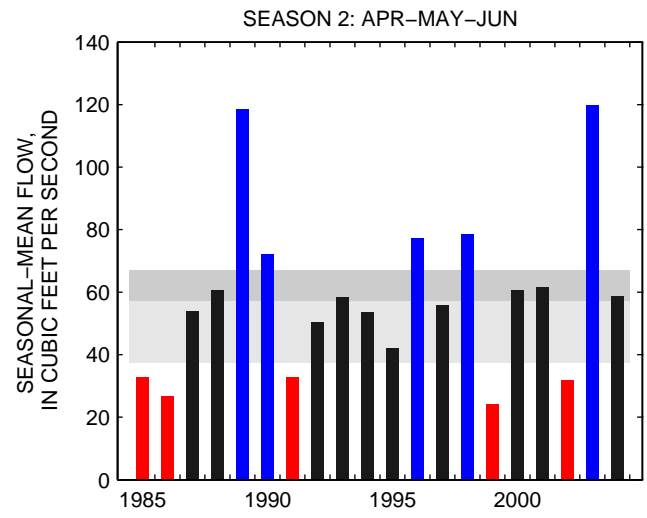
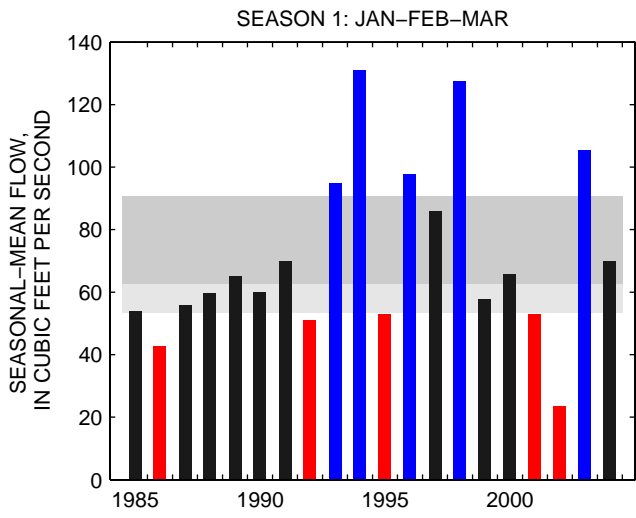
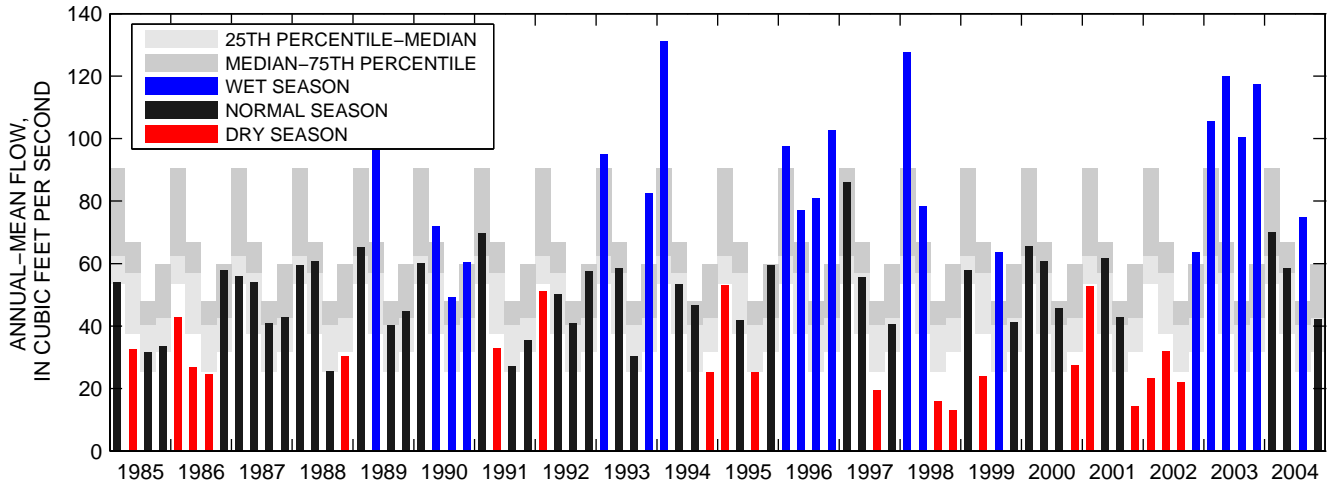
01639000:MONOCACY RIVER AT BRIDGEPORT, MD



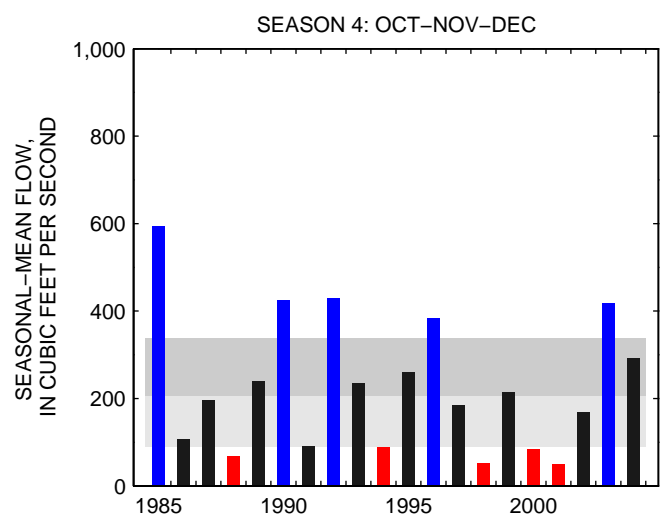
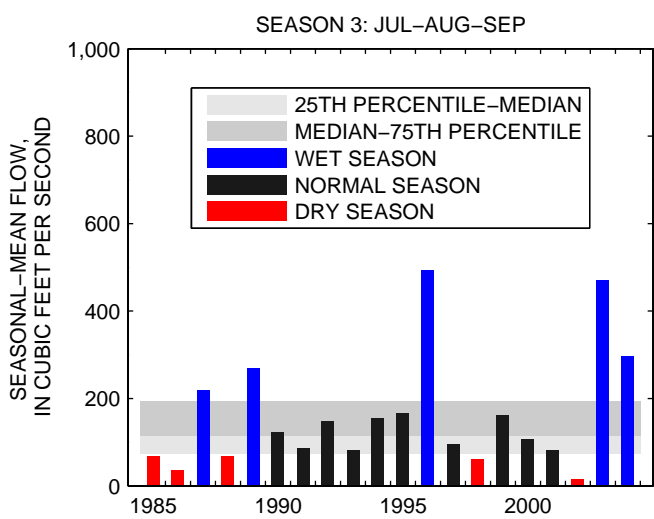
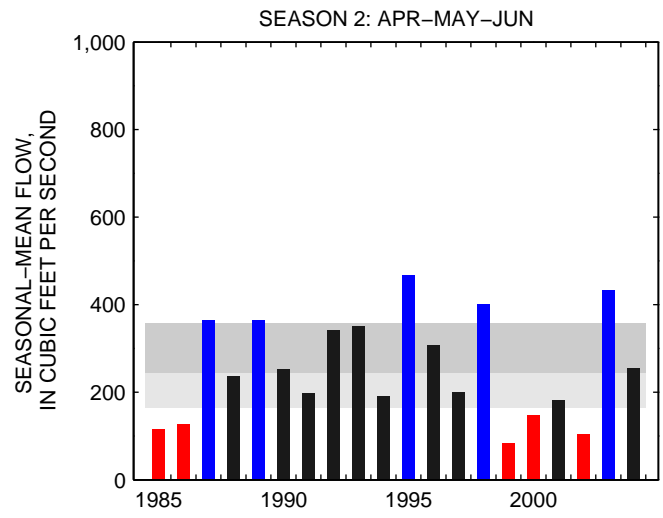
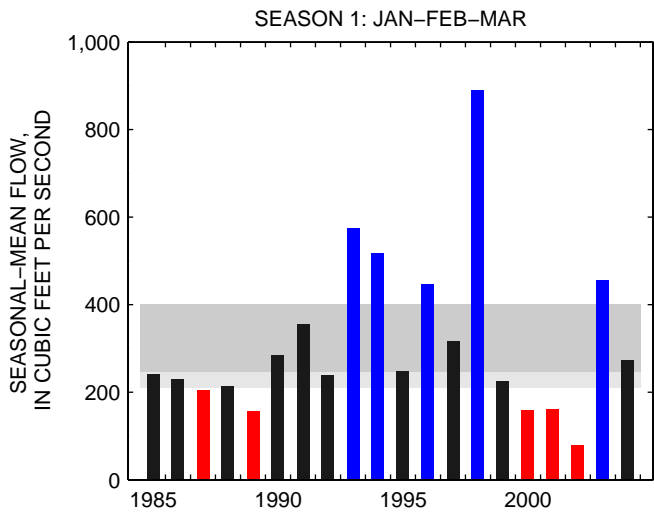
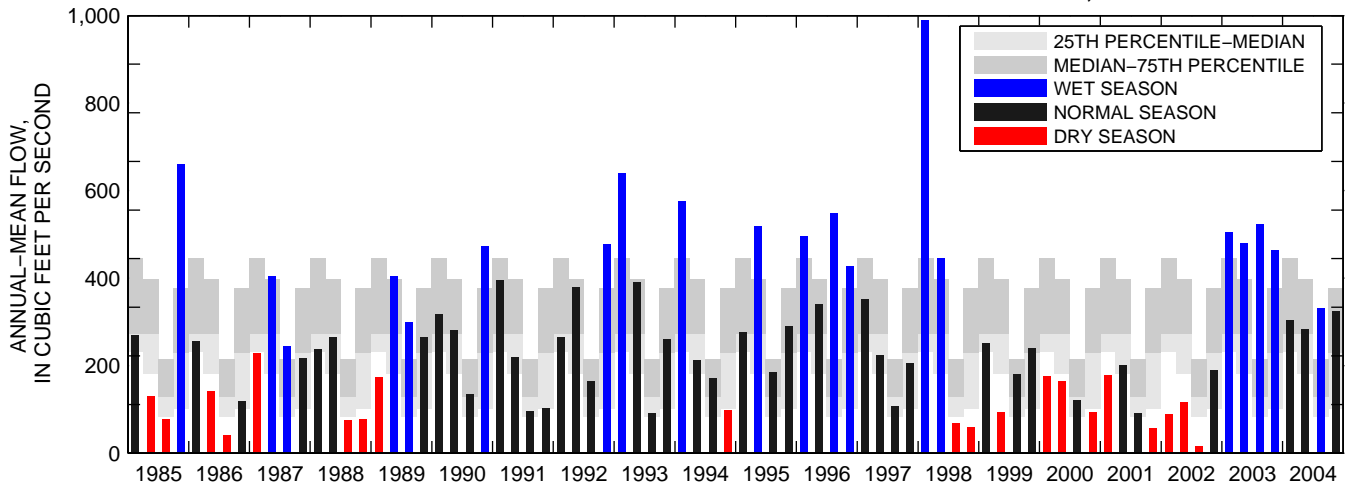
01643000:MONOCACY RIVER AT JUG BRIDGE NEAR FREDERICK, MD



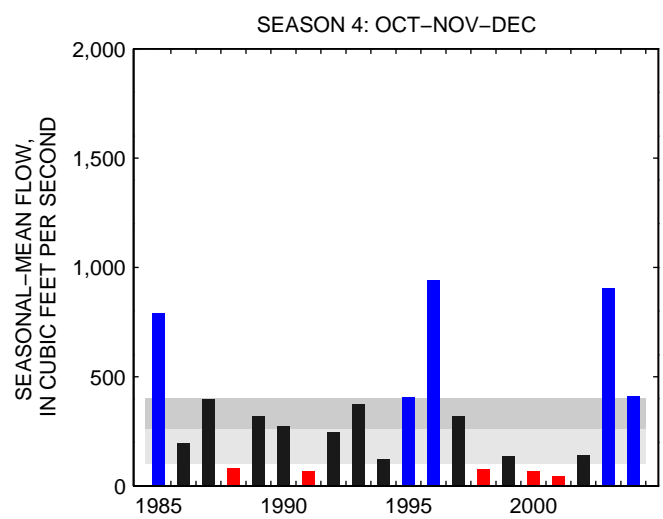
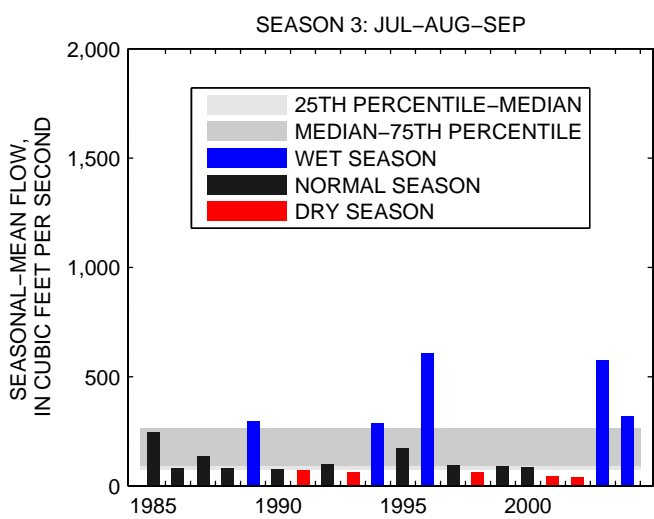
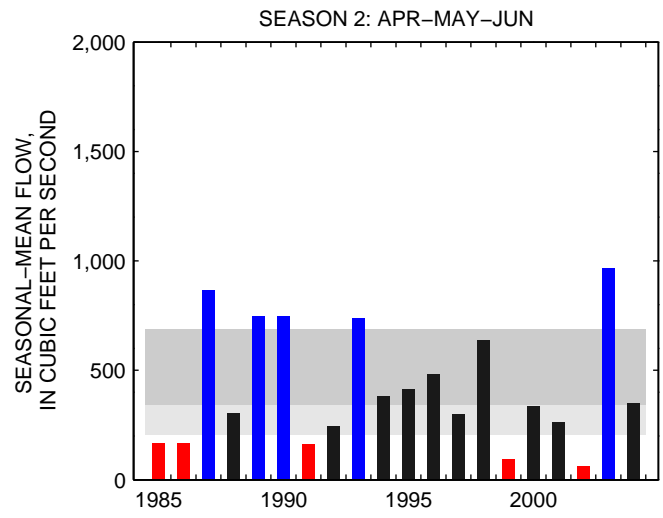
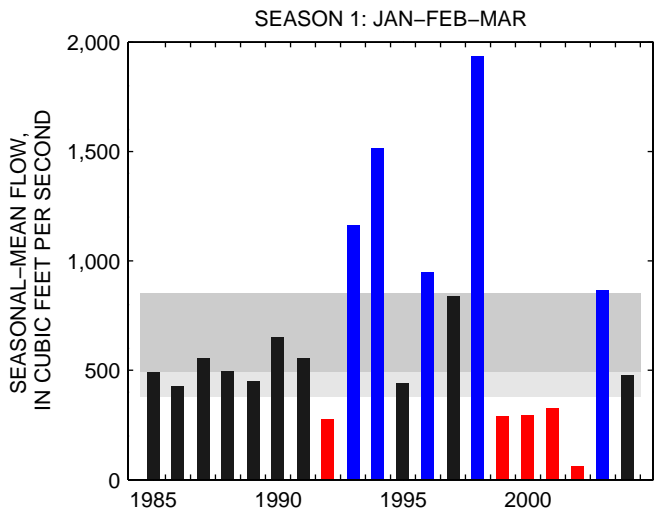
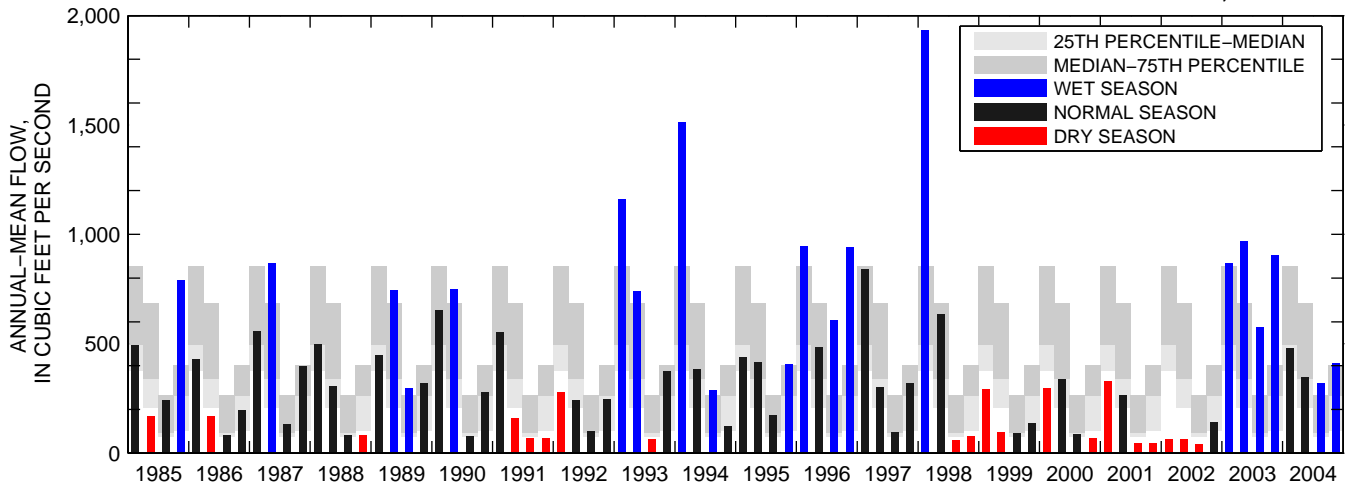
01651000:NW BRANCH ANACOSTIA RIVER NEAR HYATTSVILLE, MD



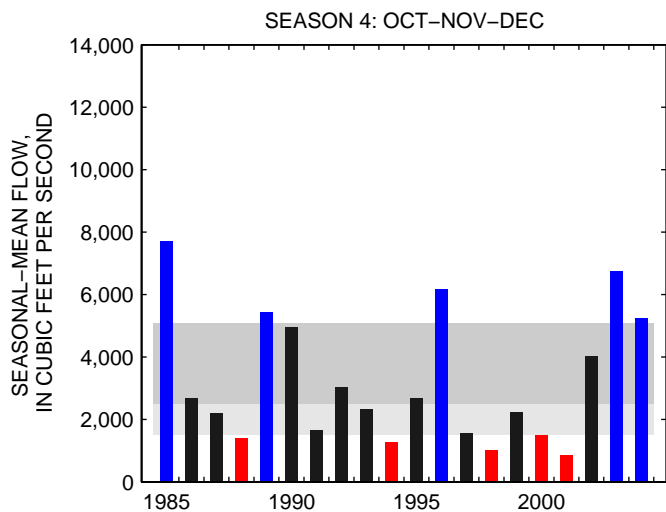
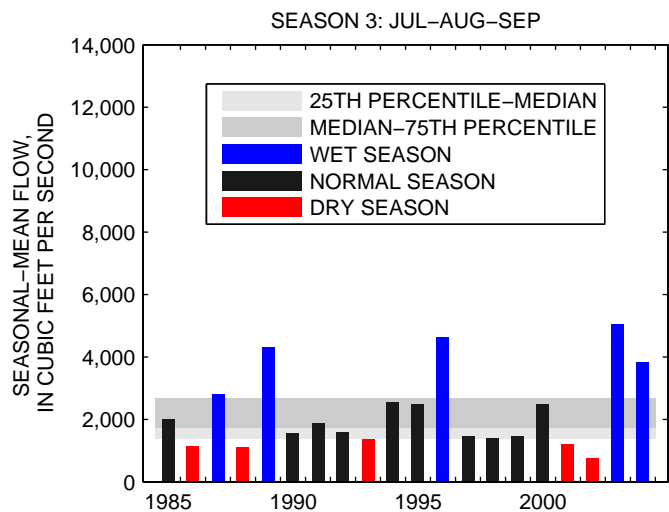
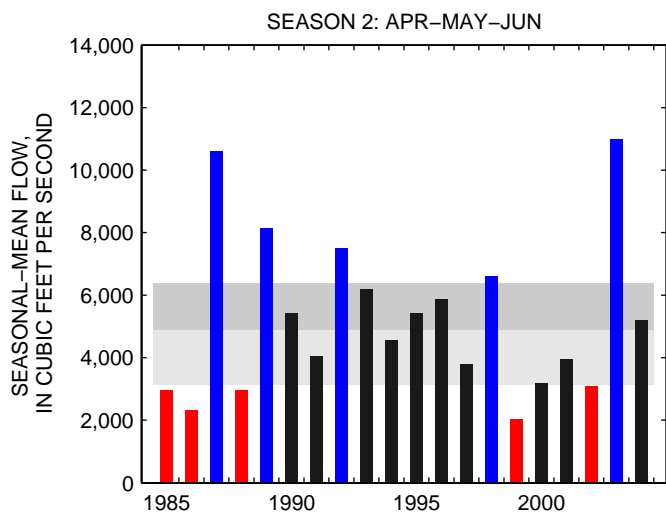
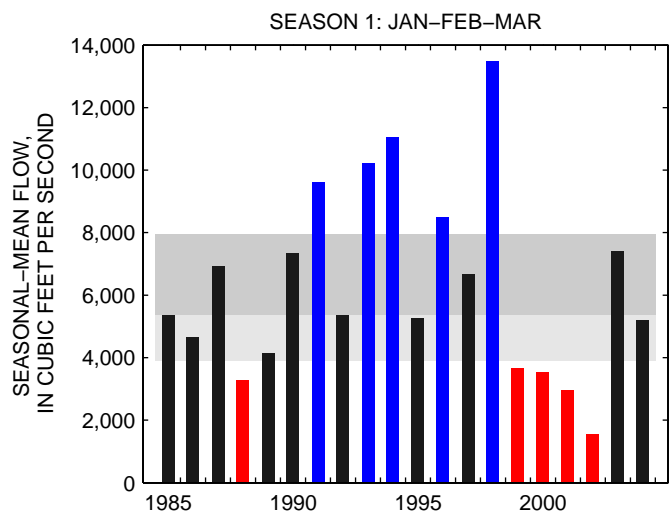
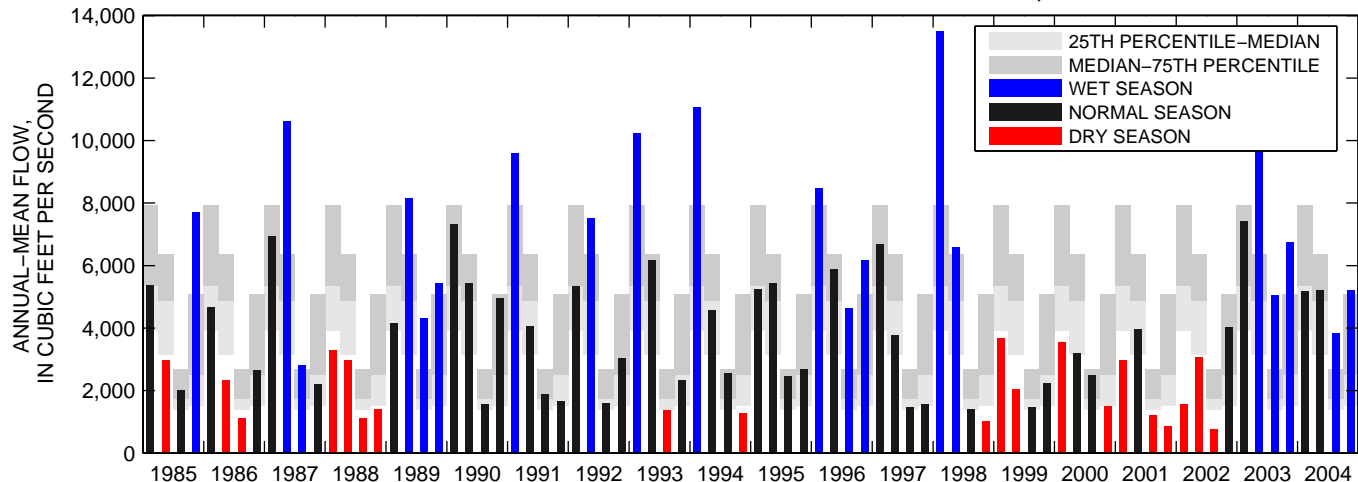
01666500:ROBINSON RIVER NEAR LOCUST DALE, VA



01671020:NORTH ANNA RIVER AT HART CORNER NEAR DOSWELL, VA



02026000:JAMES RIVER AT BENT CREEK, VA



02037500:JAMES RIVER NEAR RICHMOND, VA

