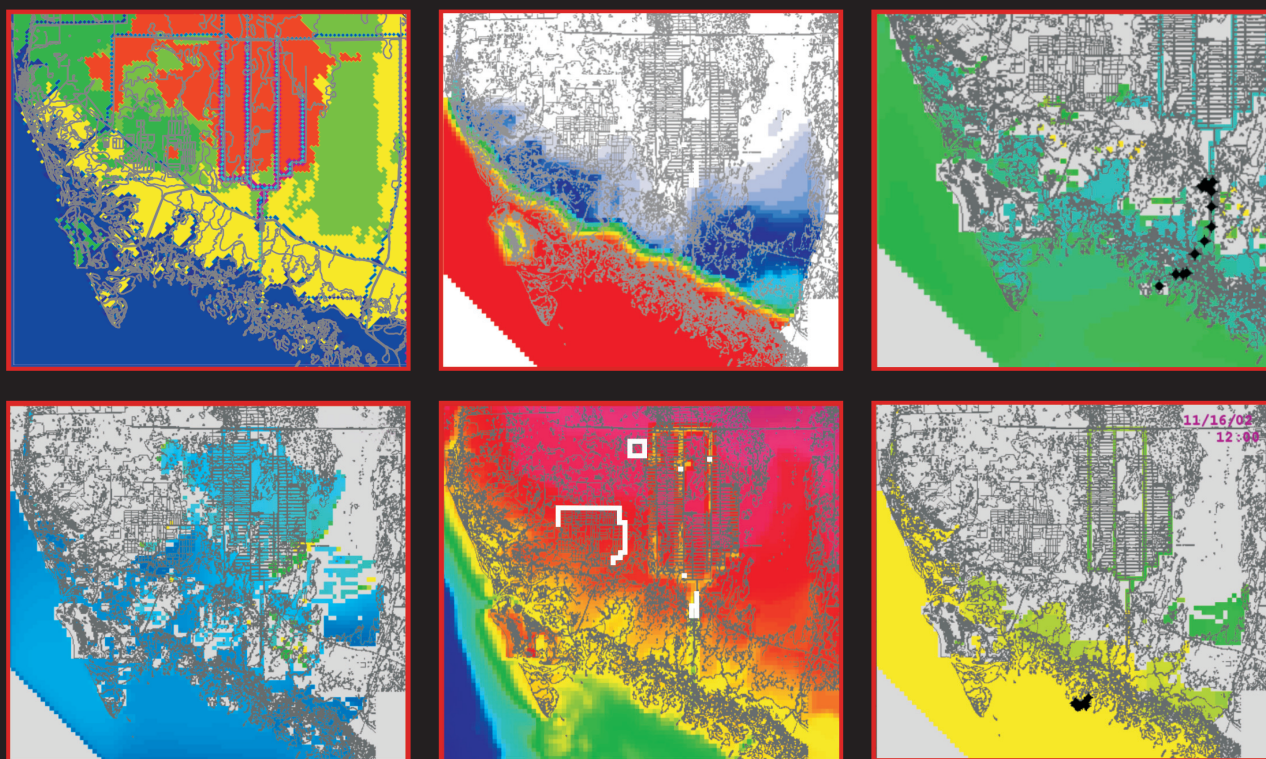


Prepared as part of the  
U.S. Geological Survey Priority Ecosystems Science Initiative

# Development, Testing, and Application of a Coupled Hydrodynamic Surface-Water/Groundwater Model (FTLOADDS) with Heat and Salinity Transport in the Ten Thousand Islands/Picayune Strand Restoration Project Area, Florida



Scientific Investigations Report 2009-5146

ISBN 978-1-4113-2597-5



9 781411 325975

