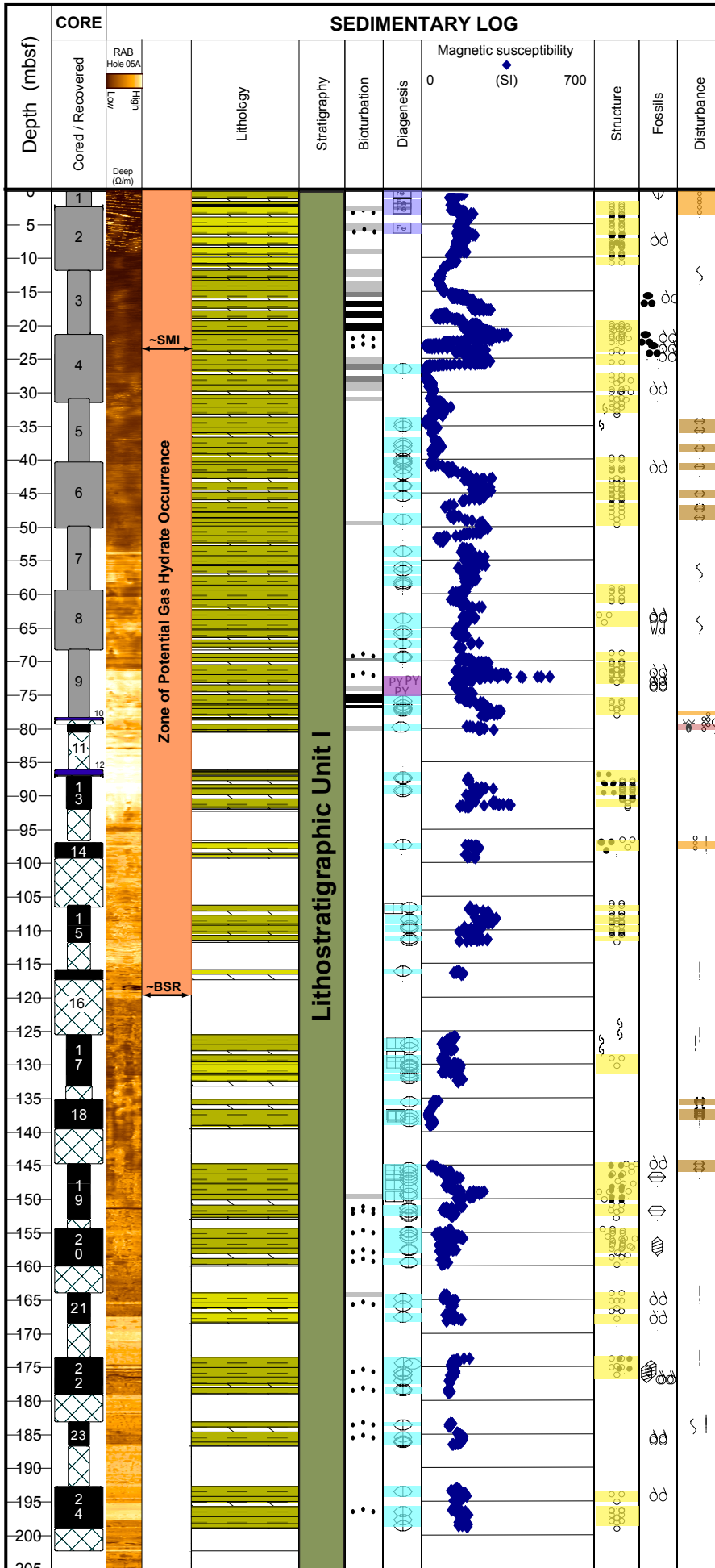


# NGHP Expedition 01

## Cored Interval Site 05 - Hole C

Seafloor 957.2 (m)



### Key

**Cored & Recovered:**

- APC Core Recovery
- XCB Core Recovery
- Cored Interval No Recovery
- Pressure Core Recovery

**Lithology:**

- Nannofossil Rich Clay
- Nannofossil Bearing Clay
- Foraminifera Bearing Clay
- Catwalk Sampled Core

**Bioturbation:**

- Rare
- Moderate
- Common
- Abundant

**Diagenesis:**

- FeS (Fe)
- Pyrite (PY)
- Authigenic Carbonate
- Carbonate Cement

**Structures:**

- Silt/Sand Beds
- Silt/Sand Laminae
- Mottling

**Fossils:**

- Shell Fragments
- Foraminifera
- Mollusk
- Gastropod
- Woody Debris

**Disturbance:**

- Moussey Gas
- Expansion Cracks
- Moderately Disturbed
- Very Disturbed
- Soupy

