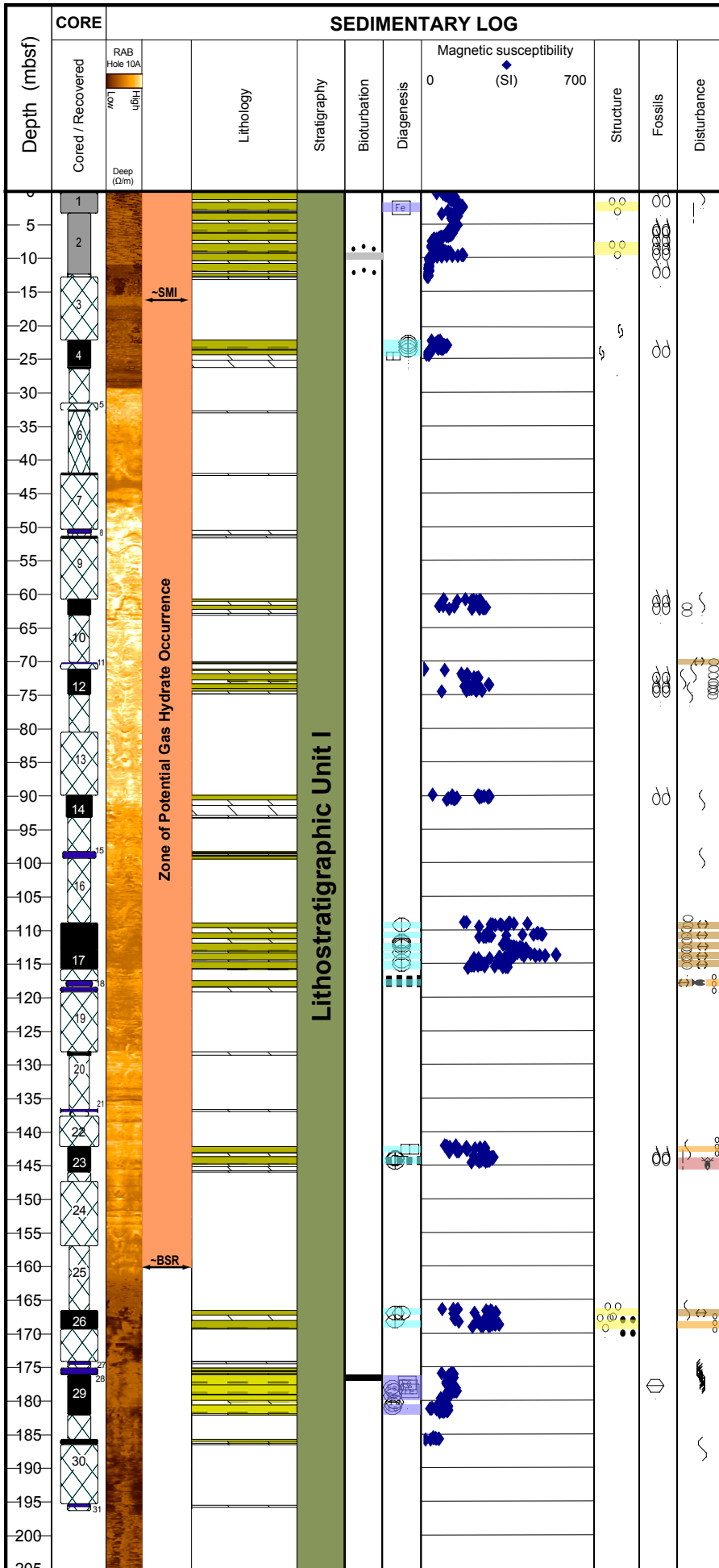


# NGHP Expedition 01

## Cored Interval Site 10 - Hole B

Seafloor 1049.4 (m)



### Key

**Cored & Recovered:**

- APC Core Recovery
- XCB Core Recovery
- Cored Interval No Recovery
- Pressure Core Recovery

**Lithology:**

- Nannofossil Rich Clay
- Nannofossil Bearing Clay
- Catwalk Sampled Core

**Bioturbation:**

- Rare
- Moderate
- Abundant

**Diagenesis:**

- Fe, FeS
- FeS Nodule
- Authigenic Carbonate
- Carbonate Cement
- Carbonate Bands

**Structures:**

- Silt/Sand Beds
- Silt/Sand Laminae
- Mottling
- Salmon Texture

**Fossils:**

- Shell Fragments

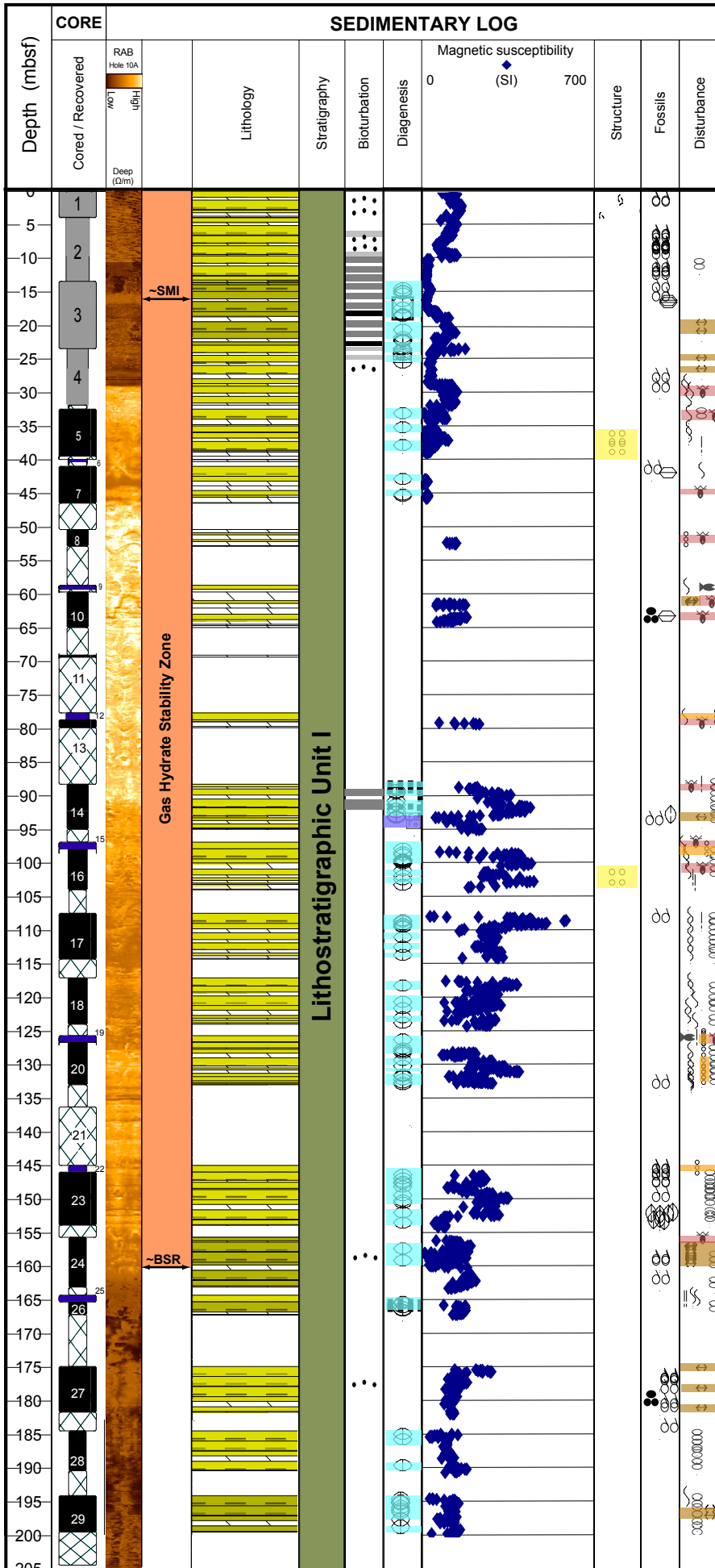
**Disturbance:**

- Moussey Gas
- Expansion Cracks
- Biscuit & Slurry
- Moderately Disturbed
- Very Disturbed
- Soupy

# NGHP Expedition 01

## Cored Interval Site 10 - Hole D

Seafloor 1050.4 (m)



### Key

**Cored & Recovered:**

- APC Core Recovery
- XCB Core Recovery
- Cored Interval No Recovery
- Pressure Core Recovery

**Lithology:**

- Nannofossil Rich Clay
- Nannofossil Bearing Clay
- Catwalk Sampled Core

**Bioturbation:**

- Rare
- Moderate
- Common
- Abundant

**Diagenesis:**

- FeS
- Authigenic Carbonate
- Carbonate Cement
- Carbonate Bands

**Structures:**

- Silt/Sand Beds
- Silt/Sand Laminae
- Mottling

**Fossils:**

- Shell
- Fragments
- Foraminifera
- Mollusk
- Gastropod
- Diatoms

**Disturbance:**

- Moussey
- Gas
- Expansion Cracks
- Biscuit & Slurry
- Salmon Texture
- Moderately Disturbed
- Very Disturbed
- Soupy

