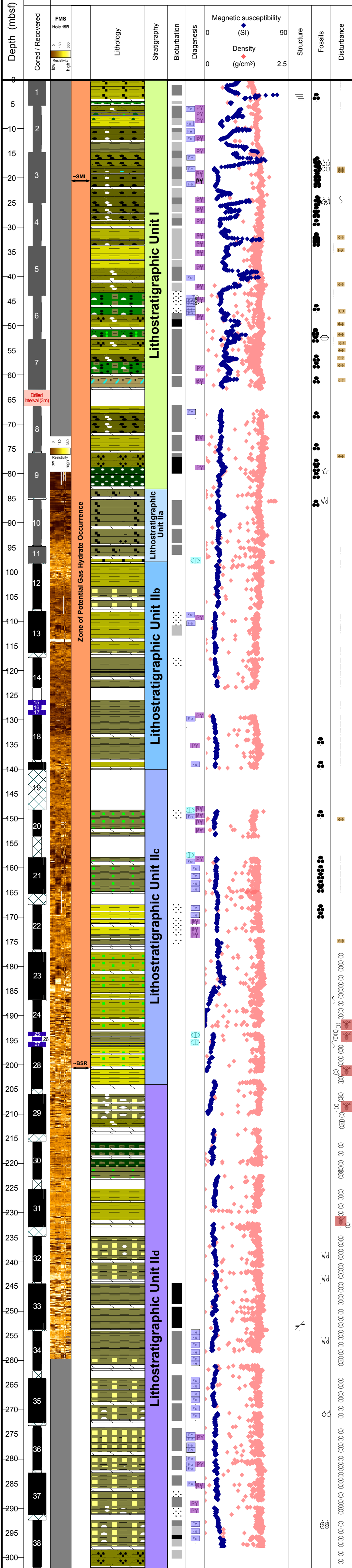


# SEDIMENTARY LOG

**NGHP Expedition 01**  
**Cored Interval Site 19 - Hole A**  
**Seafloor 1434 (m)**



## Key

- Cored & Recovered:**
- APC Core Recovery
  - XCB Core Recovery
  - Cored Interval No Recovery
  - Pressure Core Recovery

### Lithology:

- Clay
- Nannofossil Rich Clay
- Nannofossil Bearing Clay
- Foram and Nannofossil Bearing Clay
- Foram Rich Nannofossil Bearing Clay
- Nannofossil Rich Foram Bearing Clay
- Biosiliceous Bearing Clay Rich Nannofossil Ooze
- Foraminifera Bearing Nannofossil Ooze
- Foraminifera and Clay Rich Nannofossil Ooze
- Foraminifera and Clay Bearing Nannofossil Ooze
- Nannofossil Ooze
- Foraminifera and Aragonite Bearing Clay
- Nannofossil Rich Foram and Authigenic Carbonate Bearing Clay
- Nannofossil Rich Foram and Plant Debris Bearing Clay
- Nannofossil and Plant Debris Bearing Clay
- Glaucinite Rich Clay
- Glaucinite Bearing Clay
- Nannofossil and Glaucinite Rich Clay
- Nannofossil Rich Glaucinite Bearing Clay
- Biosiliceous Bearing Clay
- Nannofossil Rich Biosiliceous Bearing Clay
- Biosiliceous and Nannofossil Bearing Clay
- Pyrite Rich Clay
- Nannofossil Rich Pyrite Bearing Clay
- Foraminifera Rich, Plant, Pyrite & Clay Bearing Nannofossil Ooze
- Pyrite Bearing Dolomite Silt
- Nannofossil & Volcanic Glass Bearing Clay
- Volcanic Glass and Pyrite Bearing Clay
- Volcanic Glass Bearing Clay
- Volcanic Glass Rich Clay
- Volcanic Ash
- Catwalk Sampled Core

### Bioturbation:

- Rare
- Common
- Moderate
- Abundant

### Diagenesis:

- Pyrite
- FeS
- FeS Nodule
- Authigenic Carbonate Micro-Nodule

### Structures:

- Fracture
- Planar Lamination

### Fossils:

- Shell Fragments
- Foraminifera
- Woody Debris
- Mollusk
- Discoaster spp.* LA

### Disturbance:

- Moussey
- Expansion Cracks
- Moderately Disturbed
- Very Disturbed
- Biscuit & Slurry

