


NGHP Expedition 1


Cored Interval Site 14 - Hole A

Seafloor 906.6 (m)


Barrel Sheet Key


Cored & Recovered:


 Core Recovery


 Cored Interval No Recovery


Lithology:

 Catwalk Sampled Core


 Silty Clay


 Nannofossil Rich Clay


 Nannofossil Bearing Clay

 Clay


Bioturbation:


 Rare


 Moderate


 Abundant

Diagenesis:


 FeS


 FeS Nodule


 Authigenic Carbonate


 Carbonate Bands


Structures:


 Silt/Sand Beds

 Silt/Sand Laminae


 Shell Fragments


 Foraminifera


 Gastropod


 Mollusk


Disturbance:

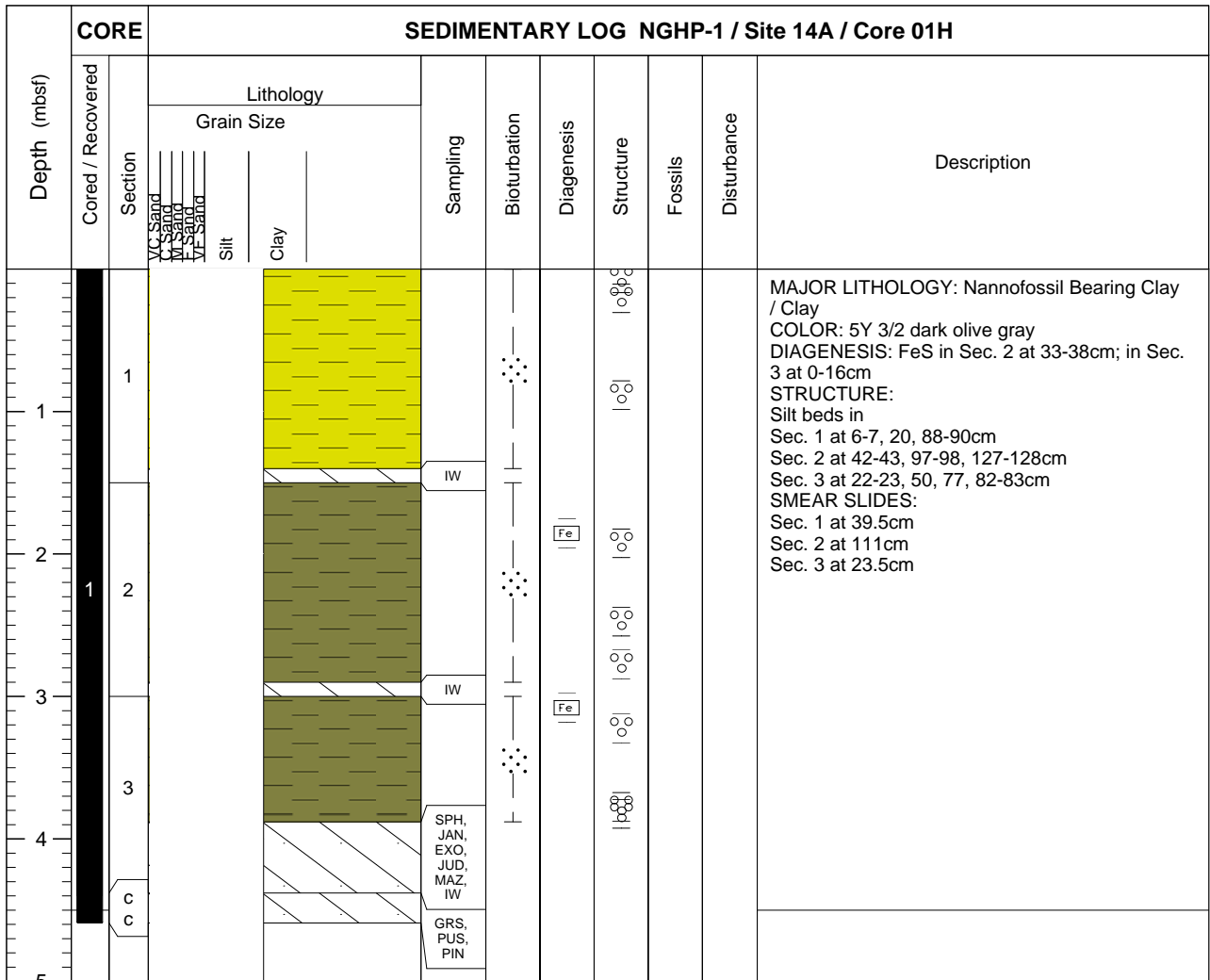
 Moussey

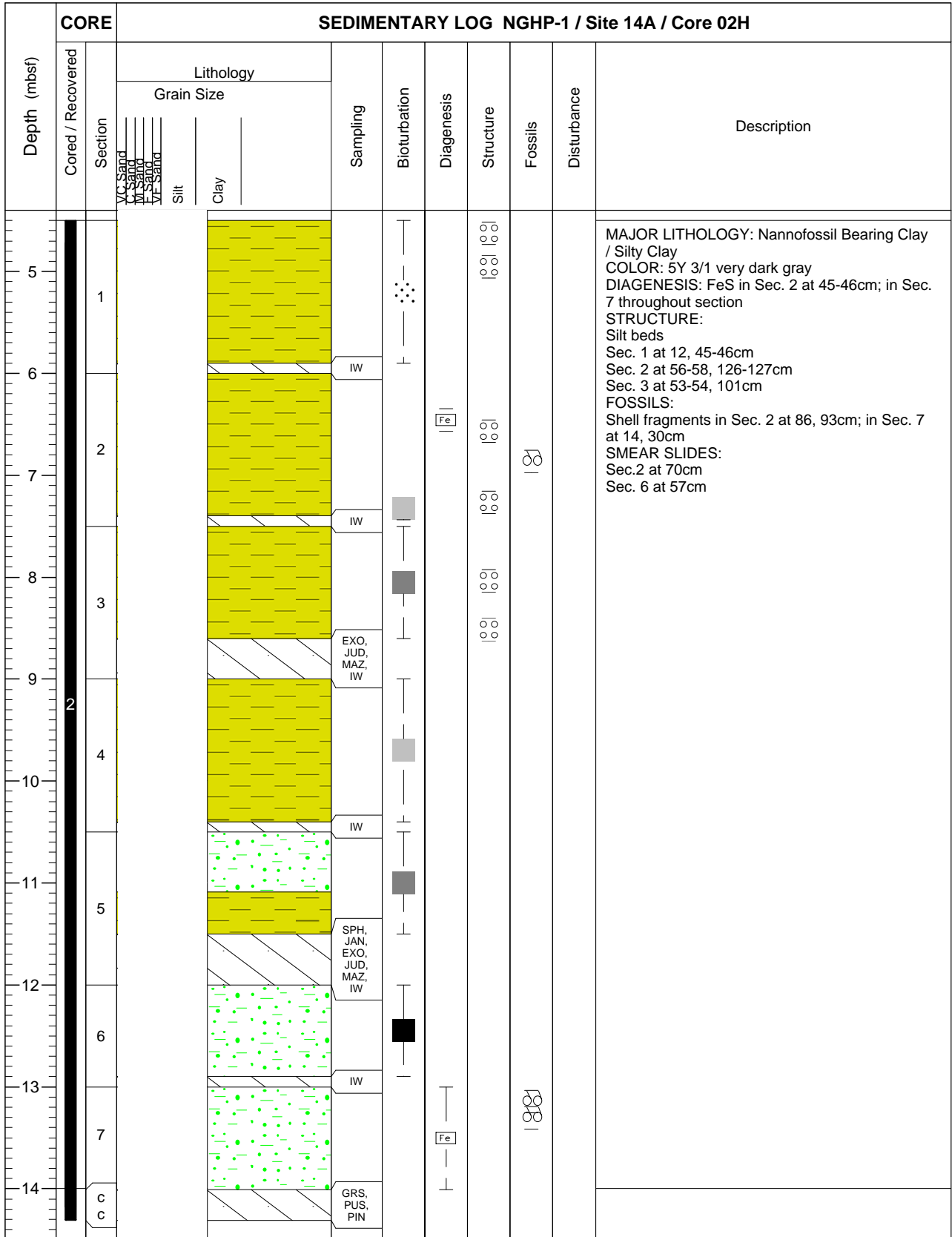
 Expansion Cracks

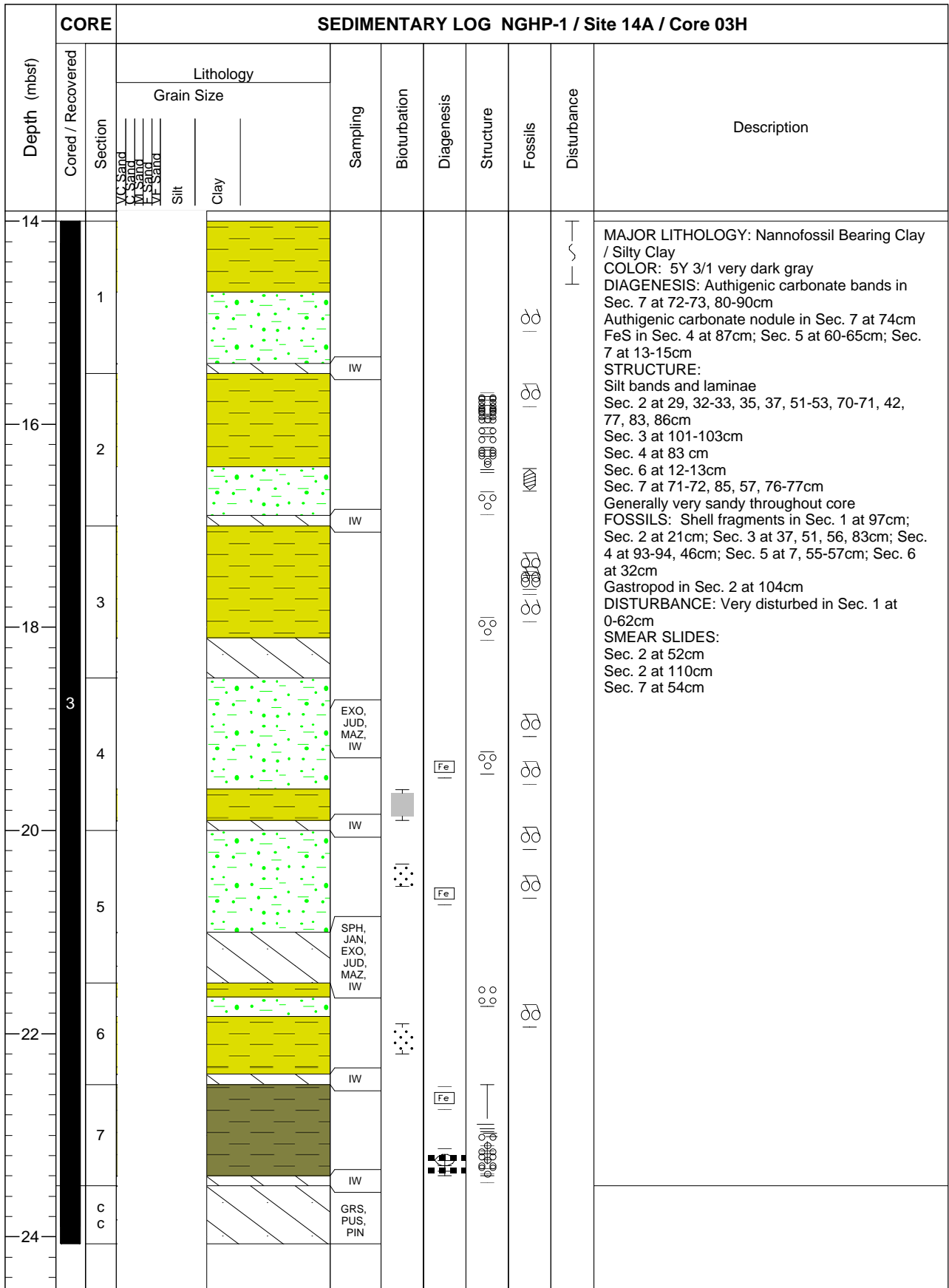
 Moderately Disturbed

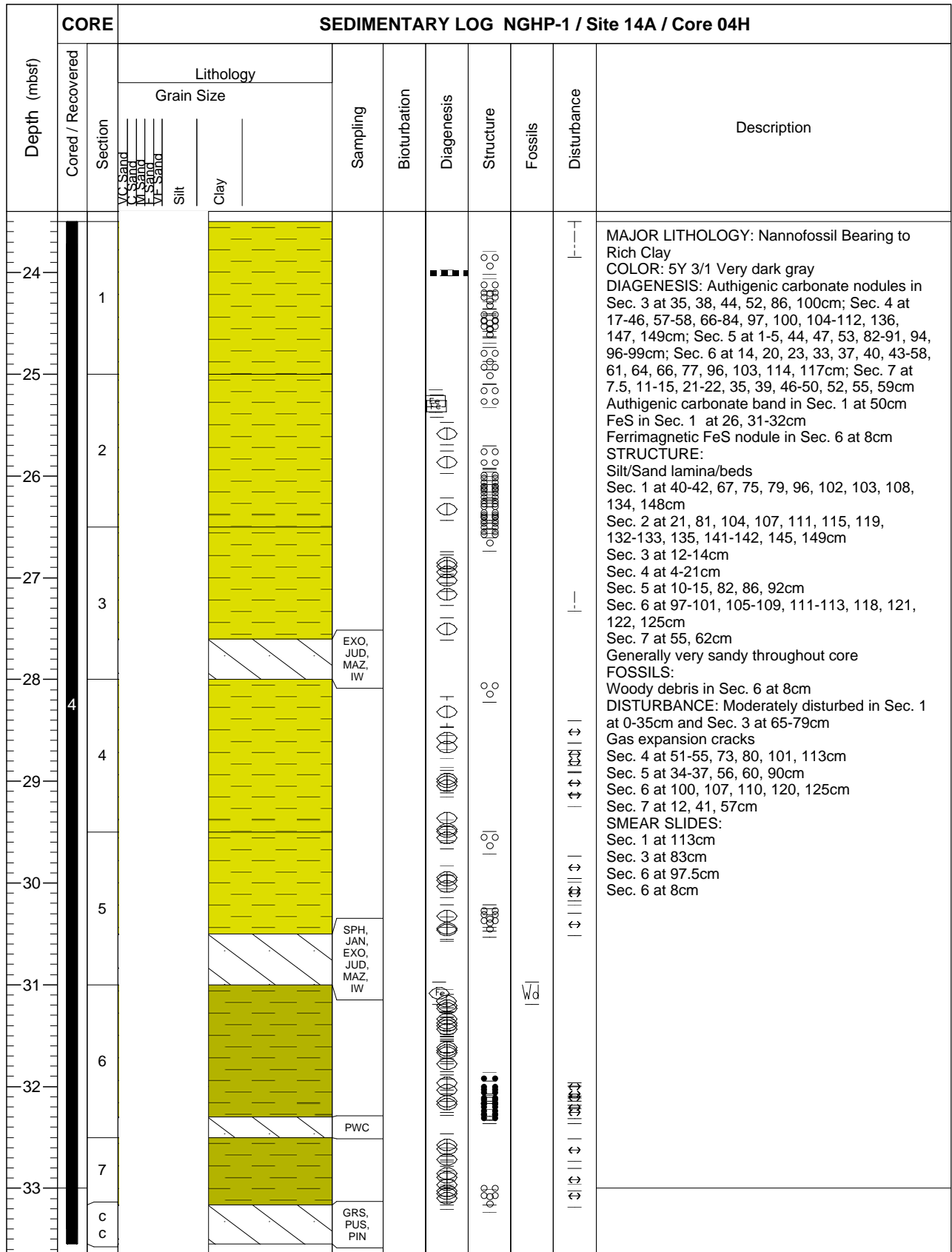
 Very Disturbed

 Biscuit & Slurry

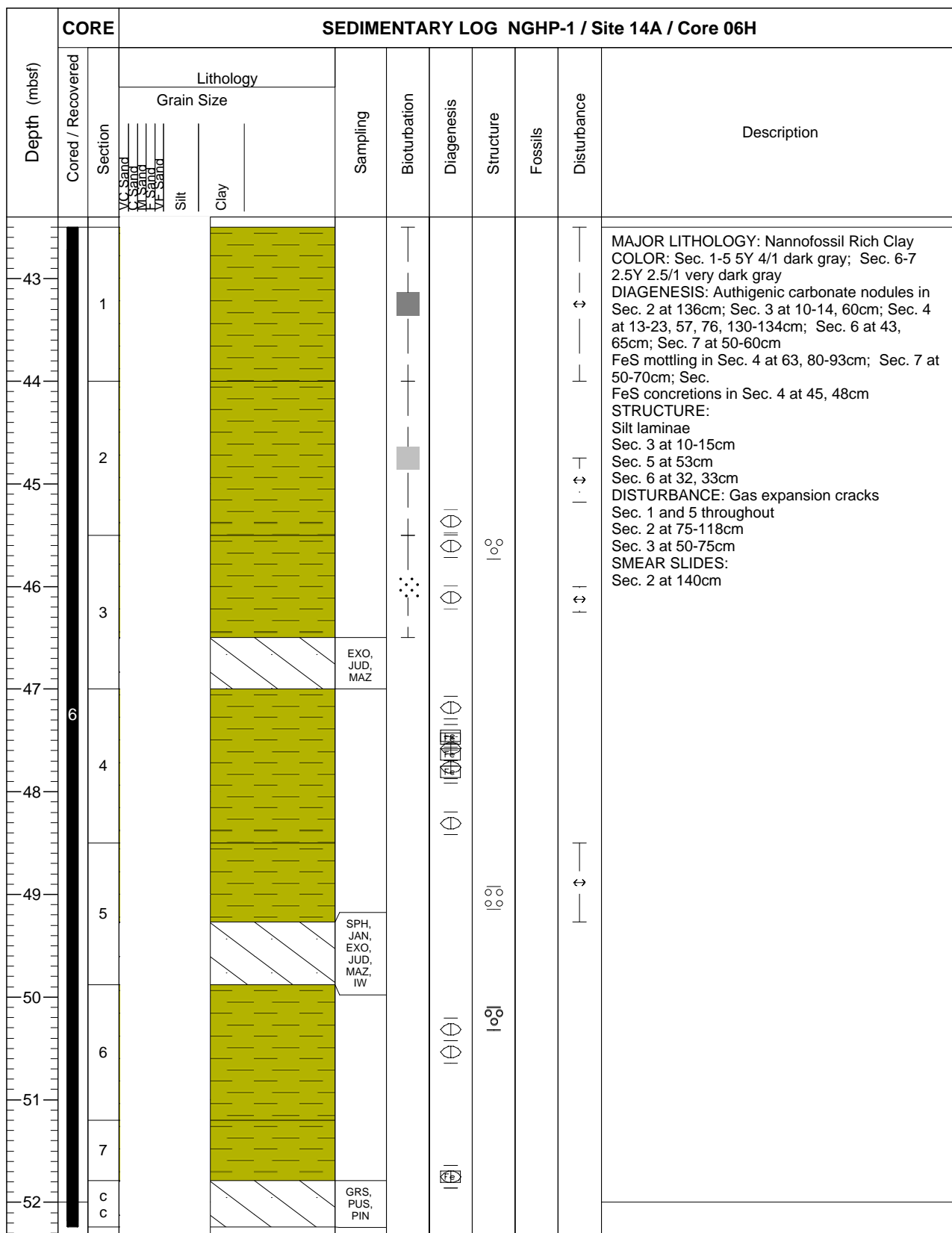




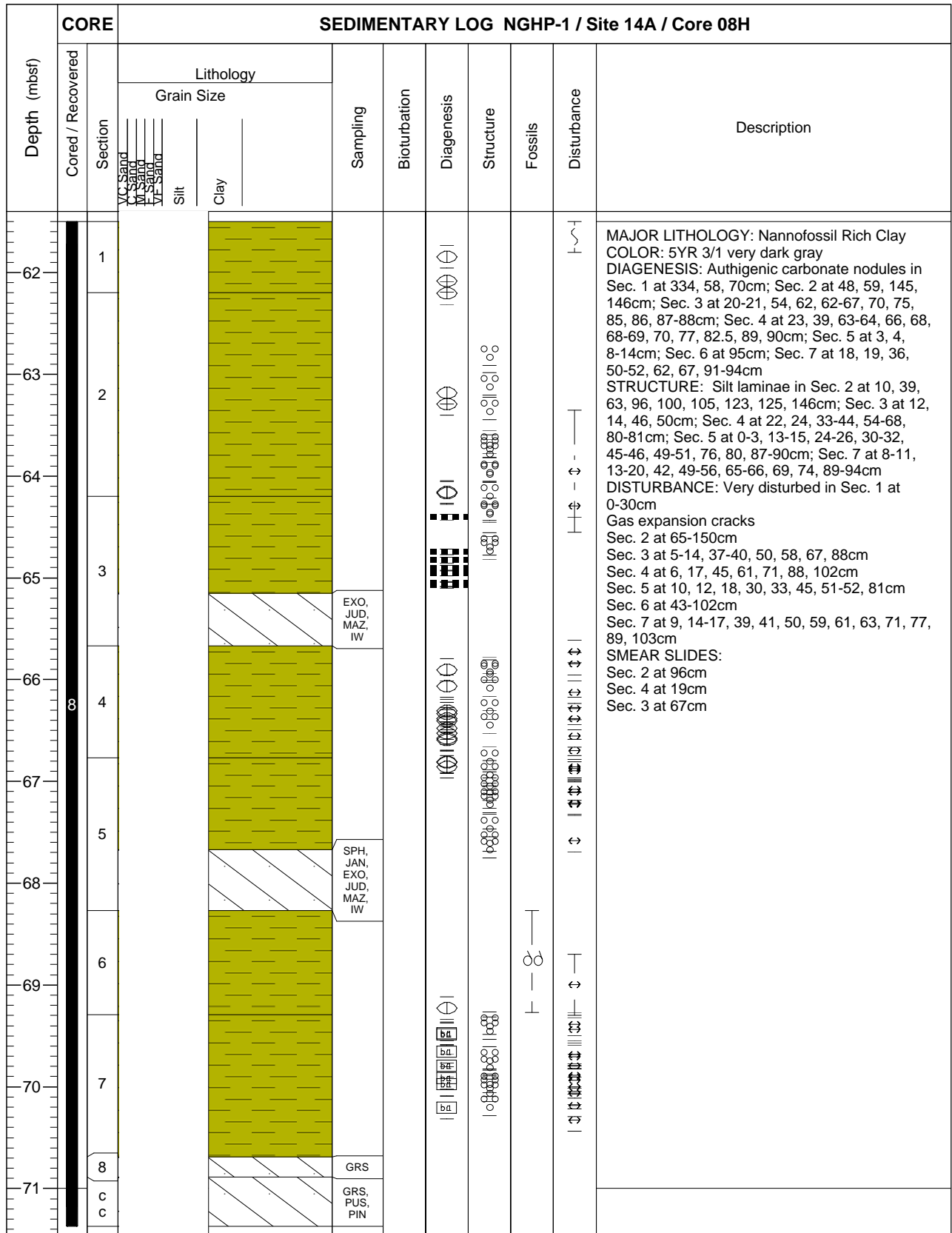




Depth (mbsf)	CORE SEDIMENTARY LOG NGHP-1 / Site 14A / Core 05H												
	Cored / Recovered	Section	Lithology		Sampling	Bioturbation	Diagenesis	Structure	Fossils	Disturbance	Description		
			Grain Size	Clay									
33	5	1	VC Sand V Sand IV Sand VF Sand	Silt	Clay						<p>MAJOR LITHOLOGY: Nannofossil Rich Clay COLOR: 5y 2.5/1 Very dark gray DIAGENESIS: Authigenic carbonate nodules in Sec. 1 at 62, 67, 72-77, 84, 96, 115-123cm; Sec. 2 at 85, 86, 99, 101, 102, 104, 108, 127-129, 144cm; Sec. 3 at 47, 48, 49, 50, 61, 63, 65, 72, 83, 88, 91, 93, 104cm; Sec. 4 at 3-29, 45-48, 57-102, 127-144cm; Sec. 5 at 31-53, 69-71, 79, 83-85cm; Sec. 6 at 9, 17, 50-52, 85, 91, 97, 100, 128-142cm Authigenic carbonate filled burrows in Sec. 2 at 49-52, 54-57cm STRUCTURE: Silt laminae Sec. 1 at 47, 49, 51-52, 53, 56, 60, 120-121cm Sec. 2 at 4-30, 143, 33-46, 83-90, 94-96, 103-104, 105-108, 111, 119-129, 131cm Sec. 3 at 10, 15, 18-19, 22, 26-28, 31, 32, 34, 36, 41-42, 51, 53, 62, 64-65, 70, 73, 75-76, 78cm Sec. 4 at 40-41, 96-116, 147-148cm Sec. 5 at 0-13, 18-20, 57-93cm Sec. 6 throughout and at 62, 65, 91-96cm DISTURBANCE: Moderately disturbed in Sec. 1 at 0-35cm Gas expansion cracks Sec. 1 at 107, 117, 126, 128cm Sec. 2 at 83, 95, 114, 117, 130, 132, 134-135, 145-150cm Sec. 3 at 70.5, 74-76, 81, 82, 84-86, 91, 94, 97cm Sec. 4 at 7, 12, 14, 17, 31, 35, 52, 63, 85, 89, 91, 94, 115, 118, 119, 120, 124, 138, 144cm Sec. 6 at 13, 17, 20, 31, 36, 39, 41, 43, 47-49, 60-61, 77, 82, 85, 92, 93, 95, 100, 102, 114-118, 122cm SMEAR SLIDES: Sec. 6 at 11cm Sec. 6 at 16cm Sec. 2 at 107cm</p>		
34													
35												2	
36												3	
37												4	EXO, JUD, MAZ, IW
38												5	
39	6												
40	c	SPH, JAN, EXO, JUD, MAZ, IW											
41	c												
42		GRS, PUS, PIN											



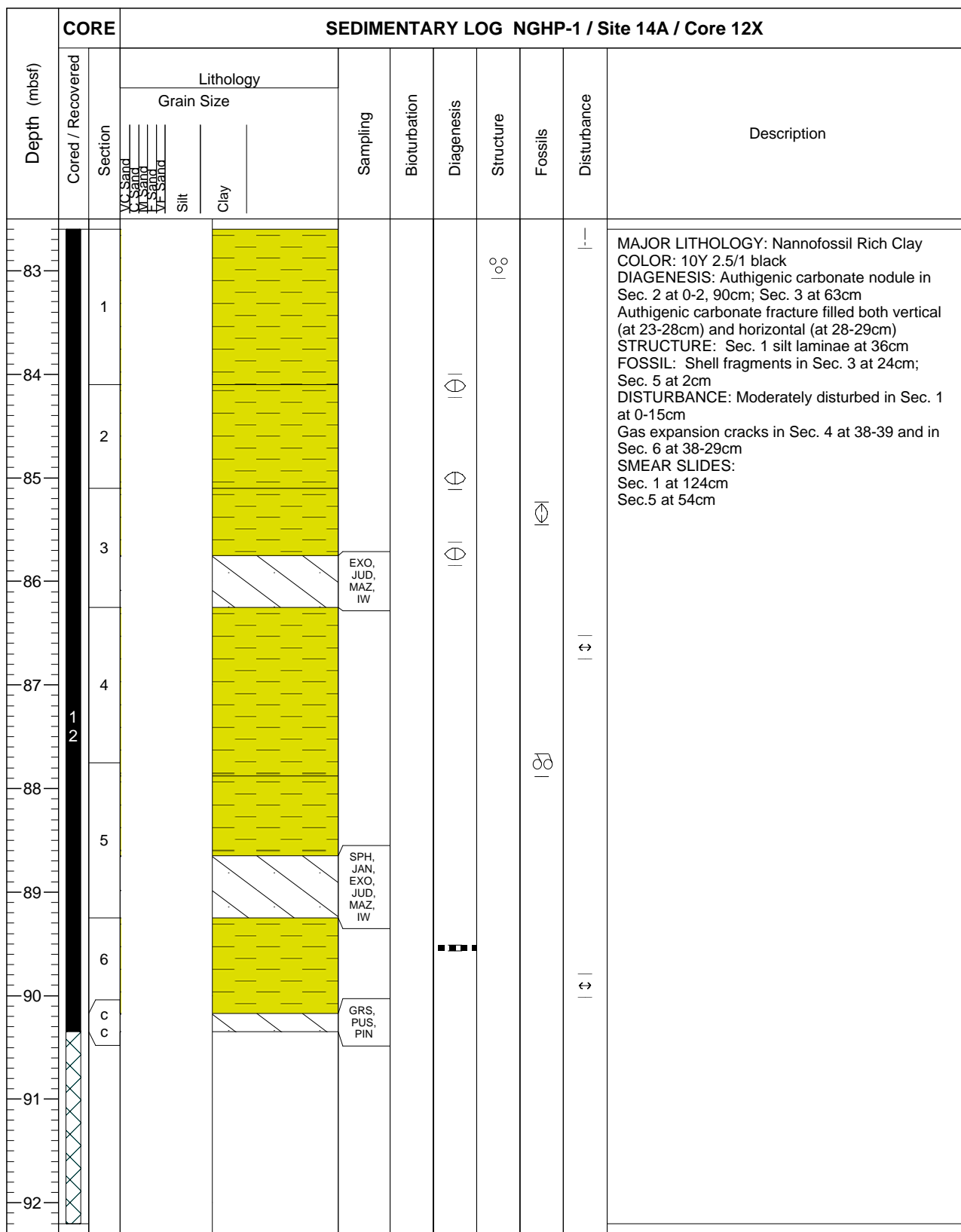
Depth (mbsf)	CORE		SEDIMENTARY LOG NGHP-1 / Site 14A / Core 07H							Description										
	Cored / Recovered	Section	Lithology		Sampling	Bioturbation	Diagenesis	Structure	Fossils		Disturbance									
			Grain Size																	
			VC Sand C Sand M Sand VF Sand	Silt	Clay															
52		1																		
53						PWC														
54		2																		
55																				
56		3				EXO, JUD, MAZ, IW														
57		4																		
58																				
59		5				SPH, JAN, EXO, JUD, MAZ, IW														
60		6																		
61		7																		
		c				GRS, PUS, PIN														
		c																		

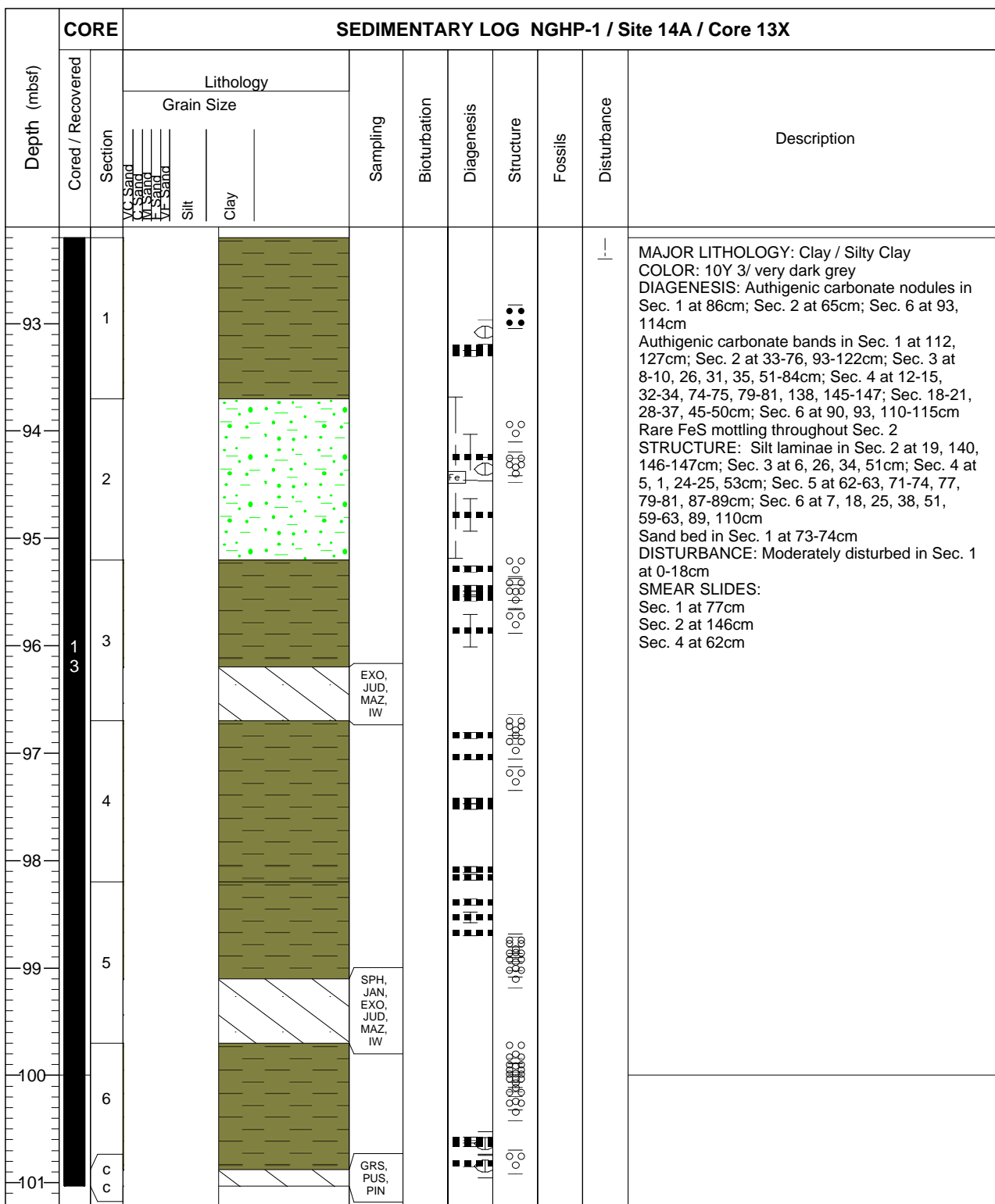


Depth (mbsf)	CORE		SEDIMENTARY LOG NGHP-1 / Site 14A / Core 09P							Description	
	Cored / Recovered	Section	Lithology		Sampling	Bioturbation	Diagenesis	Structure	Fossils		Disturbance
			Grain Size								
			VC Sand VF Sand VW Sand VX Sand VY Sand VZ Sand	Silt Clay							
71	9	1									MAJOR LITHOLOGY: Nannofossil Bearing Clay COLOR: 5Y 2.5/1 black DIAGENESIS: Authigenic carbonate at 7.5, 13-14, 72-74cm SMEAR SLIDES: Sec. 1 at 9cm
72											

Depth (mbsf)	CORE		SEDIMENTARY LOG NGHP-1 / Site 14A / Core 10Y								
	Cored / Recovered	Section	Lithology		Sampling	Bioturbation	Diagenesis	Structure	Fossils	Disturbance	Description
			Grain Size								
			VC Sand V Sand M Sand VF Sand	Silt	Clay						
72	10	1									MAJOR LITHOLOGY: Clay COLOR: 10y 2.5/1 Greenish Black DIAGENESIS: Authigenic carbonate band at 3-5cm FOSSILS: Visible forams at 34-65cm DISTURBANCE: Moderately disturbed in Sec. 1 at 37-62cm SMEAR SLIDES: Sec. 31 at 20cm
73					IW						

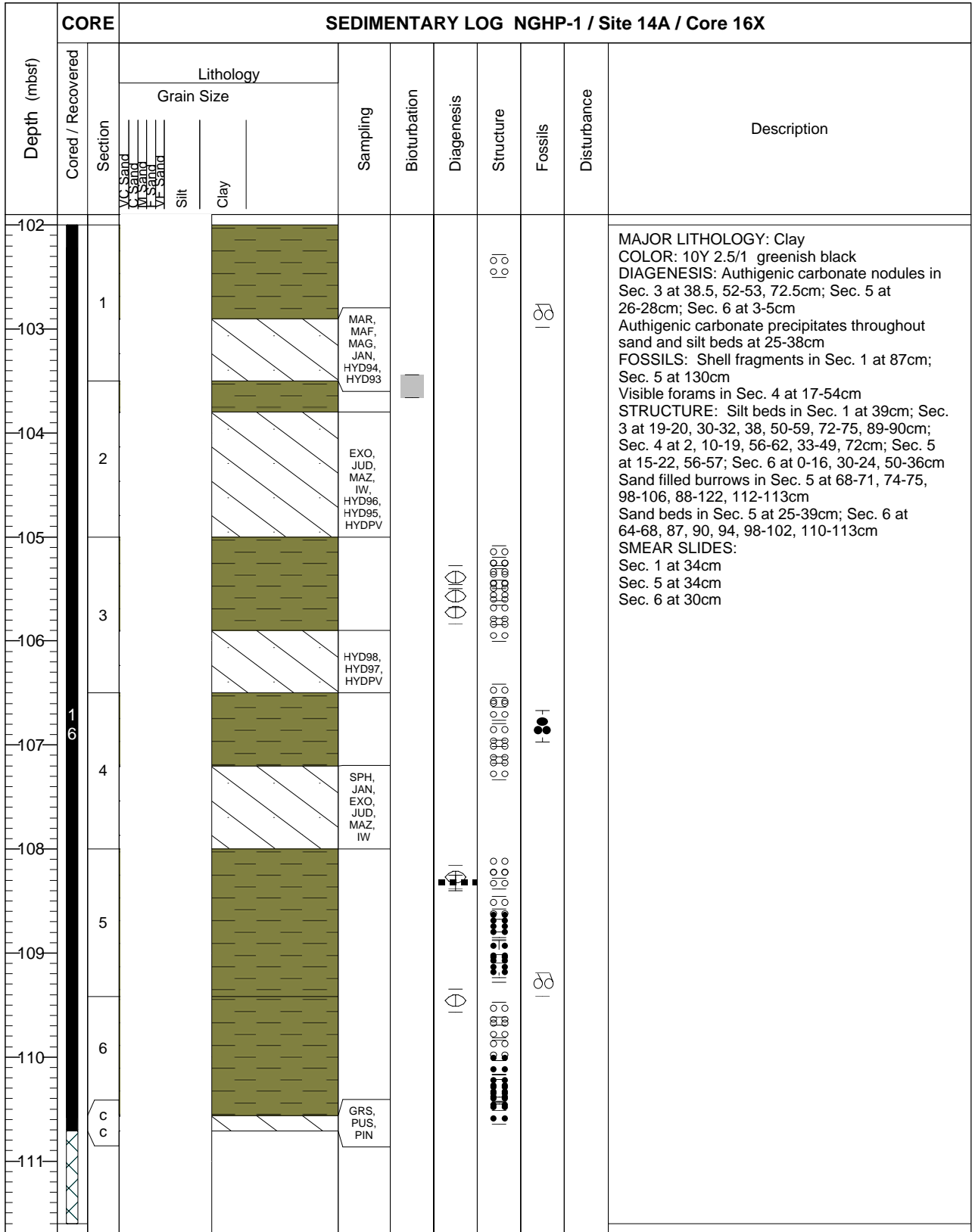
CORE		SEDIMENTARY LOG NGHP-1 / Site 14A / Core 11X							Description	
Depth (mbsf)	Cored / Recovered	Lithology		Sampling	Bioturbation	Diagenesis	Structure	Fossils		Disturbance
		Grain Size								
	Section	VC Sand	VC Sand	VC Sand	VC Sand	Silt	Clay			
73	1	[Olive Green Clay]								<p>MAJOR LITHOLOGY: Clay / Nannofossil Bearing Clay COLOR: 10Y 2.5/1 black DIAGENESIS: Authigenic carbonate nodule in Sec. 3 at 8-12cm Authigenic carbonate bands in Sec. 3 at 72, 91, 93cm; Sec. 4 at 37-38, 63, 69cm DISTURBANCE: Moderately disturbed in Sec. 1 at 0-8cm and in Sec. 2 at 77-83cm SMEAR SLIDES: Sec. 1 at 64cm Sec. 4 at 36cm</p>
74				PWC						
75	2	[Olive Green Clay]								
76				EXO, JUD, MAZ, IW						
77	3	[Olive Green Clay]								
78				SPH, IW						
79	4	[Yellow Clay]								
80				GRS, PUS, PIN						
81	c	[Cross-hatched]								
82										





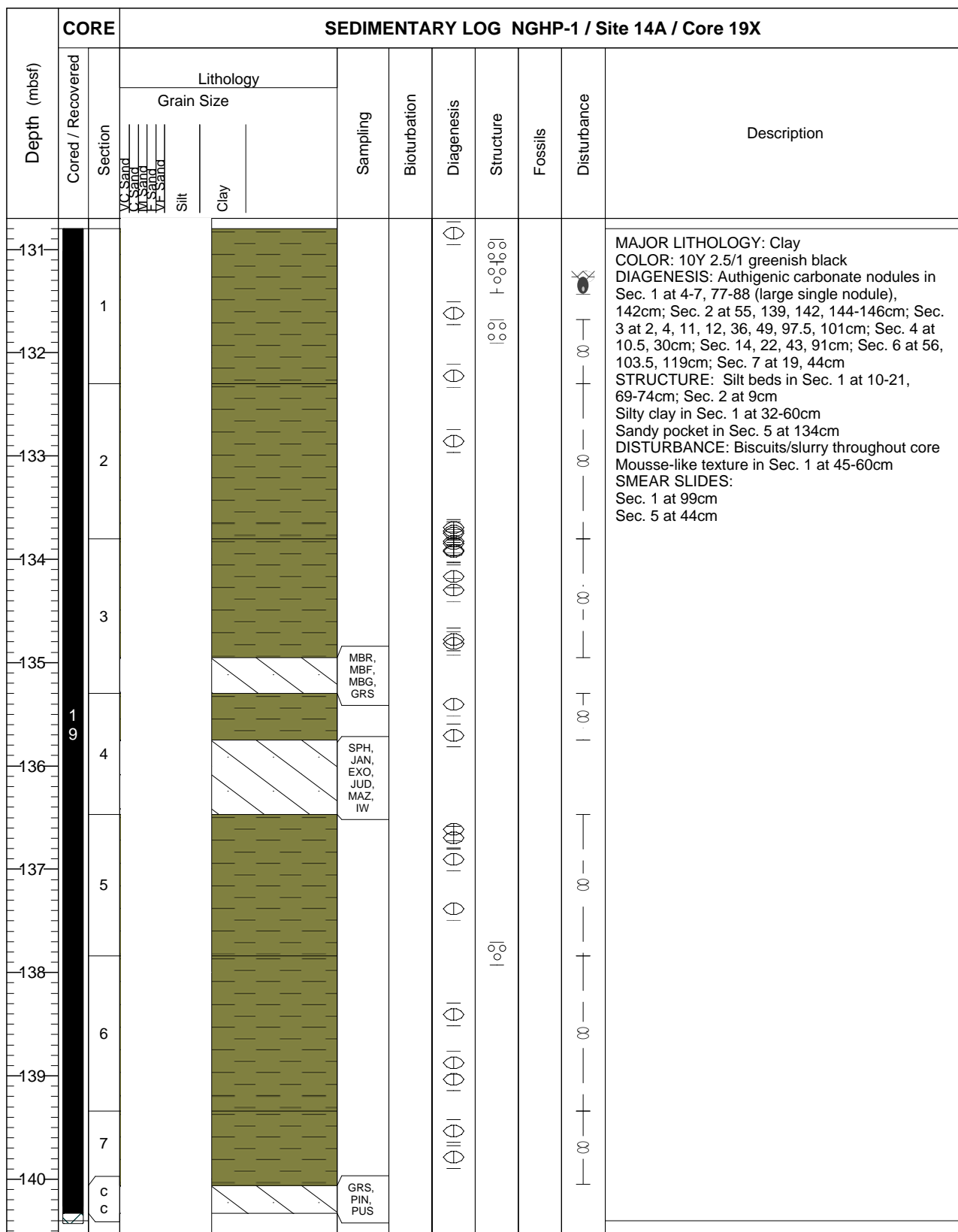
Depth (mbsf)	CORE		SEDIMENTARY LOG NGHP-1 / Site 14A / Core 14P									
	Cored / Recovered	Section	Lithology		Sampling	Bioturbation	Diagenesis	Structure	Fossils	Disturbance	Description	
			Grain Size									
			VC Sand	MC Sand	FC Sand	MF Sand	Silt	Clay				
100	1 4	1										MAJOR LITHOLOGY: Nannofossil Rich Clay COLOR: 5G 2.5 greenish black FOSSIL: ~0.5cm fossil fragment, possible Dentallium sp. SMEAR SLIDES: Sec. 1 at 2cm
101												
101												

Depth (mbfs)	CORE		SEDIMENTARY LOG NGHP-1 / Site 14A / Core 15E									
	Cored / Recovered	Section	Lithology		Sampling	Bioturbation	Diagenesis	Structure	Fossils	Disturbance	Description	
			Grain Size									
			VC Sand	WC Sand	WC Sand	WF Sand	Silt	Clay				
101	1 5	1										
												MAJOR LITHOLOGY: Nannofossil Bearing Clay COLOR: N/2.5 black SMEAR SLIDES: Sec. 1 at 28cm
102												
102												

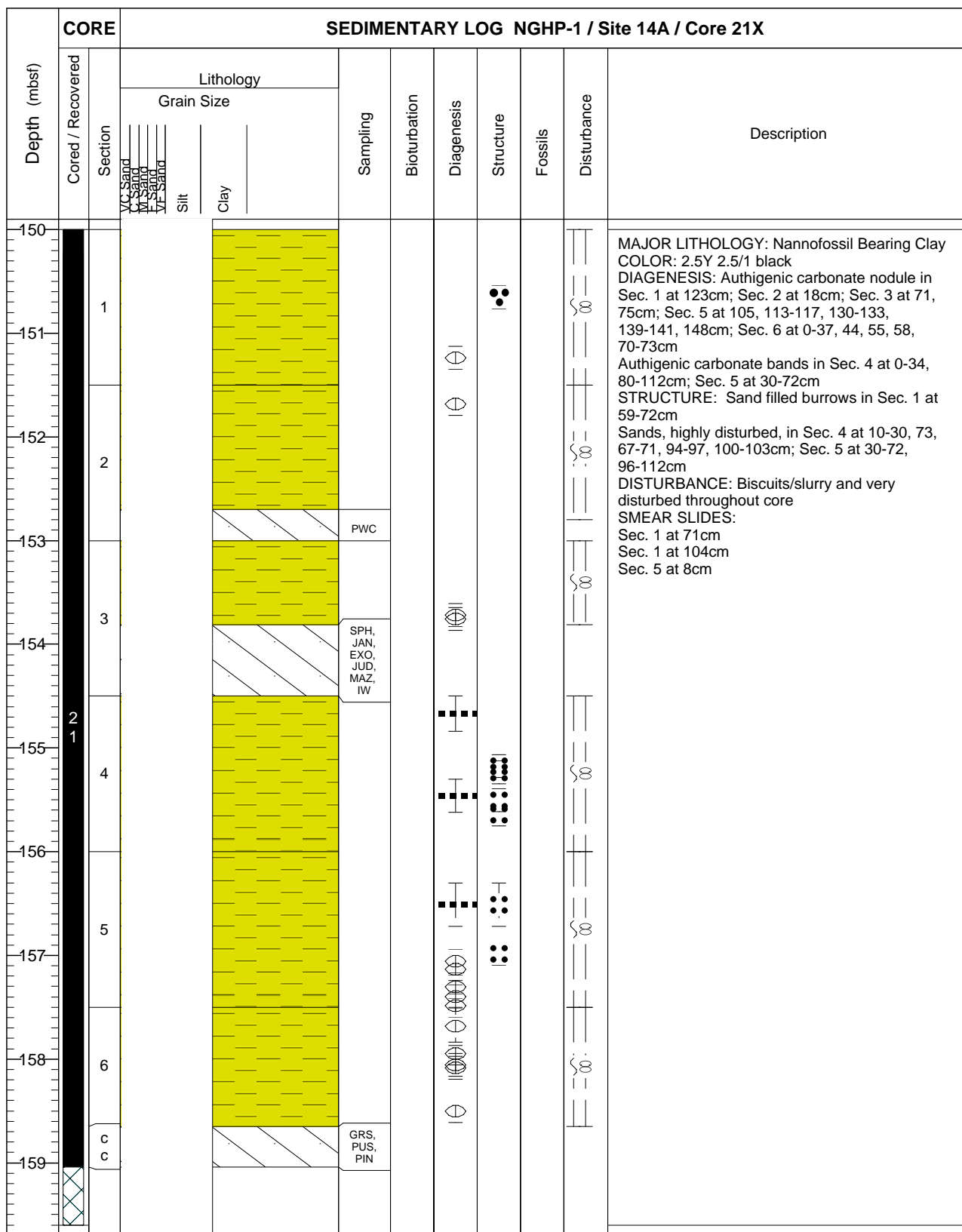


Depth (mbsf)	CORE		SEDIMENTARY LOG NGHP-1 / Site 14A / Core 17X								
	Cored / Recovered	Section	Lithology		Sampling	Bioturbation	Diagenesis	Structure	Fossils	Disturbance	Description
			Grain Size								
			VC Sand V Sand M Sand VF Sand	Silt Clay							
-112	1 7	1									MAJOR LITHOLOGY: Clay COLOR: 10Y 2.5/1 greenish black DIAGENESIS: Authigenic carbonate nodules in Sec. 1 at 3-6, 18-19, 72, 34, 40cm; Sec.2 at 4-5, 12, 50cm STRUCTURE: Silt beds in Sec. 1 at 75-79, 10-18, 46-67cm; Sec. 2 at 60, 73-79, 12-40cm SMEAR SLIDES: Sec. 1 at 42cm
-112											
-113											
-113		2									
-114											
-114		c									
-114		c									
-114											
-115											
-115											
-116											
-116											
-116											
-117											
-117											
-118											
-118											
-118											
-119											
-119											
-120											
-120											
-120											
-121											
-121											

CORE		SEDIMENTARY LOG NGHP-1 / Site 14A / Core 18X									
Depth (mbsf)	Cored / Recovered	Section	Lithology		Sampling	Bioturbation	Diagenesis	Structure	Fossils	Disturbance	Description
			Grain Size								
			VC Sand								
			W Sand								
			IV Sand								
			VF Sand								
			Silt								
			Clay								
122	1				IW						<p>MAJOR LITHOLOGY: Clay COLOR: 10Y 2.5/1 greenish black DIAGENESIS: Authigenic carbonate nodules in Sec. 1 at 57.5, 63cm; Sec. 2 at 12-13, 67cm; Sec. 3 at 2, 7-29, 35-38cm STRUCTURE: Silt beds in Sec. 1 at 16-33cm; Sec. 2 at 8-10, 36.5, 39-40cm; Sec. 3 at 11-13, 24-28, 35-38cm Sand beds in Sec. 3 at 0-2, 42-52, 55-59, 72-75, 82-91cm SMEAR SLIDES: Sec. 1 at 37.5cm Sec. 2 at 36cm</p>
123	2				SPH, JAN, EXO, JUD, MAZ, IW						
124	3										
125	c				PWC, GRS						
125	c				GRS, PUS, PIN						
126											
127											
128											
129											
130											



Depth (mbsf)	CORE SEDIMENTARY LOG NGHP-1 / Site 14A / Core 20X										
	Cored / Recovered	Section	Lithology		Sampling	Bioturbation	Diagenesis	Structure	Fossils	Disturbance	Description
			Grain Size								
			VC Sand V Sand W Sand VF Sand	Silt Clay							
141	1										<p>MAJOR LITHOLOGY: Silty Clay COLOR: 2.5Y 2.5/1 black DIAGENESIS: Authigenic carbonate nodule in Sec. 5 at 63cm; Sec. 6 at 21cm; Sec. 7 at 6, 21cm STRUCTURE: Silt and sand laminae in Sec. 1 at 0-95cm Sands as burrow fill or drilling disturbed sands in Sec. 2 at 117-150cm; Sec. 3 at 0-30cm Sand beds/laminae in Sec. 5 at 22-32, 42, 50, 147cm; Sec. 6 at 112-120cm FOSSILS: Shell fragment in Sec. 3 at 116cm DISTURBANCE: Very disturbed in Sec. 1 and 7 throughout Biscuits/slurry in Sec. 2 and 5 throughout SMEAR SLIDES: Sec. 2 at 57cm Sec. 3 at 100cm</p>
142	2										
143	3										
144	4				SPH, JAN, EXO, JUD, MAZ, IW						
145	5										
146	6										
147	7										
148											
149	c c				GRS, PUS, PIN						
150											



CORE		SEDIMENTARY LOG NGHP-1 / Site 14A / Core 22X							Description	
Depth (mbsf)	Cored / Recovered	Lithology		Sampling	Bioturbation	Diagenesis	Structure	Fossils		Disturbance
		Grain Size								
	Section	VC Sand	VC Sand							
		W Sand	W Sand							
		VF Sand	VF Sand							
		Silt								
		Clay								
160	2 2									<p>MAJOR LITHOLOGY: Clay COLOR: 2.5Y 2.5/1 black DIAGENESIS: Authigenic carbonate nodules in Sec. 1 at 115, 140cm; Sec. 2 at 56, 48, 61cm; Sec. 3 at 12, 24, 25, 30cm STRUCTURE: Sand beds in Sec. 1 at 22-30, 42, 88-91, 101-102, 106-108, 114-115, 118-121cm; Sec. 2 at 18, 50-52, 56-80cm; Sec. 3 at 3-4, 38-42cm FOSSILS: Wood piece in Sec. 1 at 71cm DISTURBANCE: Very disturbed throughout core SMEAR SLIDES: Sec. 2 at 40cm Sec. 3 at 40cm</p>
161	1							Wd		
162	2			SPH, JAN, EXO, JUD, MAZ, IW						
163	3									
164	c c			GRS, PUS, PIN						
165										
166										
167										
168										
169										

