

Figure 4. Core logs showing lithology, alteration assemblages, and quantitative mineralogy in drill holes *A*, WP1. *B*, WP2. *C*, WP3. *D*, WP4. *E*, HCBW1. *F*, HCBW3. See Appendix A for key to all lithology and alteration types.

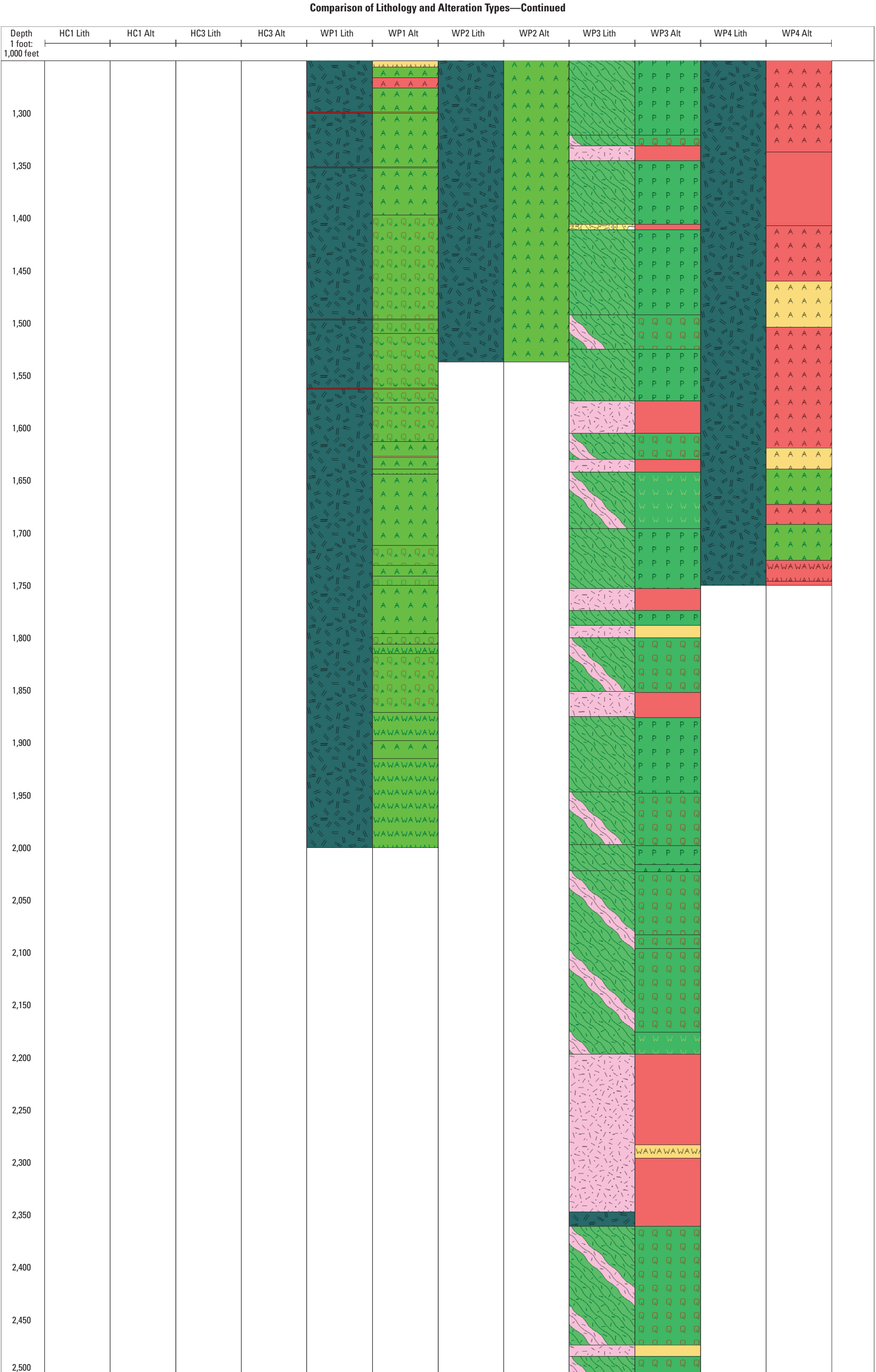


Figure 4. Core logs showing lithology, alteration assemblages, and quantitative mineralogy in drill holes *A*, WP1. *B*, WP2. *C*, WP3. *D*, WP4. *E*, HCBW1. *F*, HCBW3. See Appendix A for key to all lithology and alteration types.—Continued

Comparison of Lithology and Alteration Types—Continued

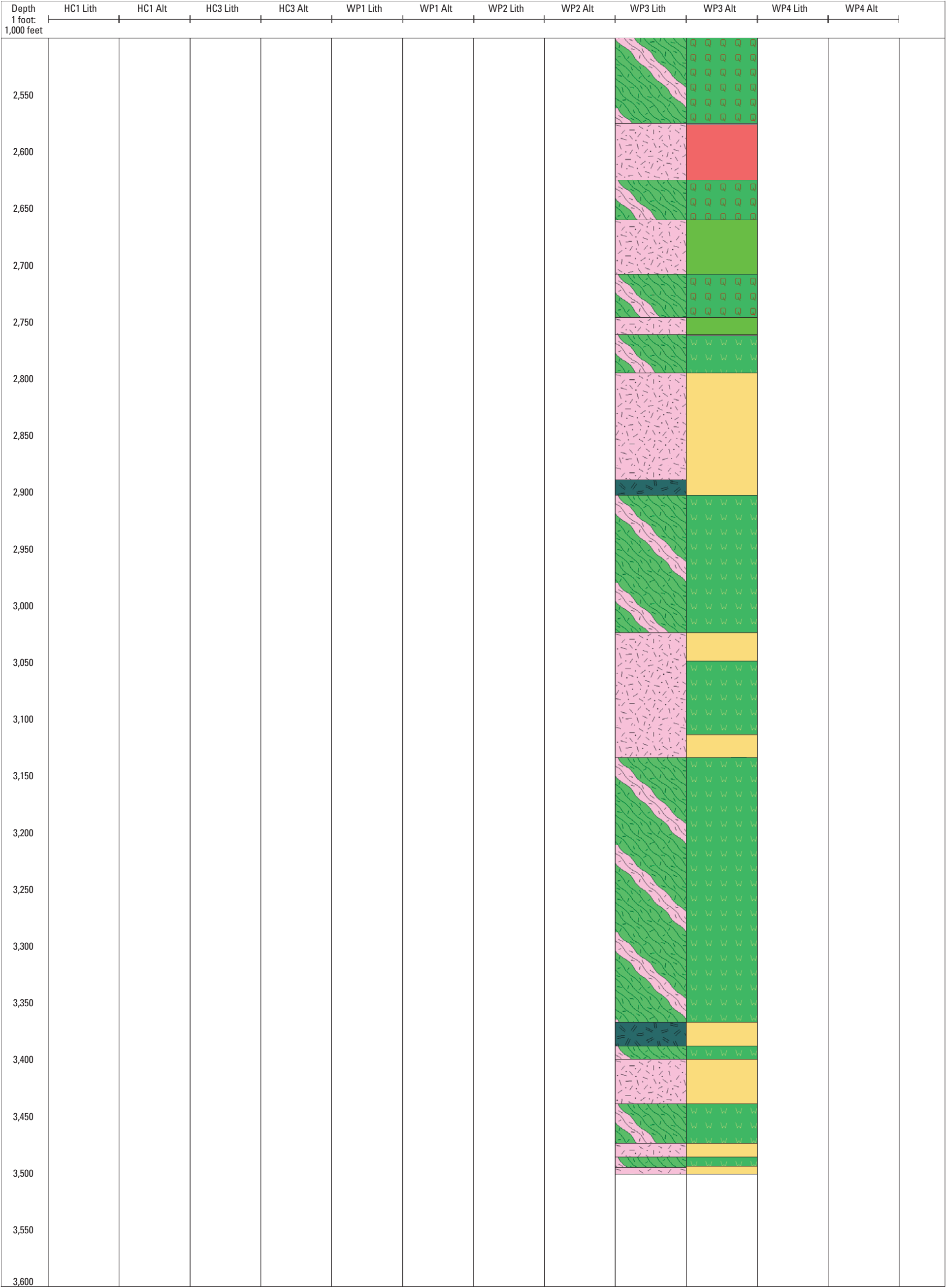


Figure 4. Core logs showing lithology, alteration assemblages, and quantitative mineralogy in drill holes *A*, WP1. *B*, WP2. *C*, WP3. *D*, WP4. *E*, HCBW1. *F*, HCBW3. See Appendix A for key to all lithology and alteration types.—Continued