

## Appendix 3. Borehole geophysical data from wells in Montgomery and Walker Counties, Texas, April 2010

**Table 1.** Borehole geophysical data from wells in Montgomery (State wells TS-60-53-718, TS-60-54-805, TS-60-55-710, TS-60-53-516, TS-60-44-807, TS-60-35-503, and TS-60-45-412) and Walker (State well YU-60-28-802) Counties, Texas, April 2010.

Explanation of abbreviations on borehole geophysical logs	
SJRA	San Jacinto River Authority
HGSD	Harris-Galveston Subsidence District
ft	feet
in	inches
diam.	diameter
GAM(NAT)	Natural Gamma
CPS	Counts per second
AP-COND	Temperature corrected induction conductivity
MMHO/M	Millimhos per meter
DEPTH	Depth below land-surface, in feet
Ind.RES	Calculated induction resistivity from measured AP-COND, where Ind.RES=10,000/AP-COND
OHM-M	Ohm-meter
RES	Single-point resistance
RES(FL)	Fluid Resistivity
SP COND	Specific conductivity at ambient fluid temperature
US/CM	Microsiemens per centimeter at ambient fluid temperature
TEMP	Temperature of Fluid (water)
DEG F	Degrees Fahrenheit
DEL TEMP	Delta Temperature
NK	Not Known
LSD	Land Surface Datum
NAVD	North American Vertical Datum
CCL	Casing Collar Locator

2 Estimated Rates of Groundwater Recharge By Using Environmental Tracers in Montgomery County, Texas, 2008

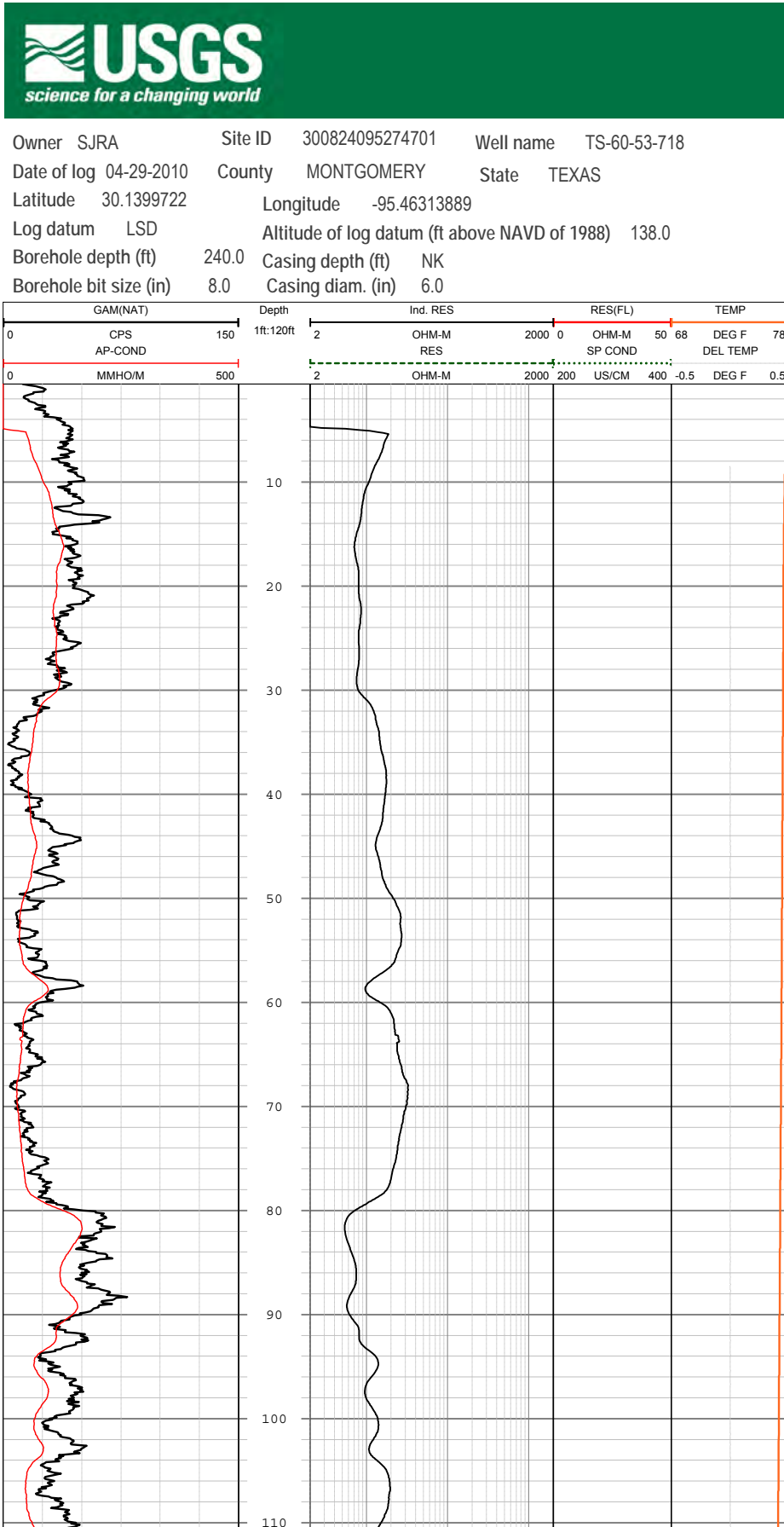


Figure A-1.

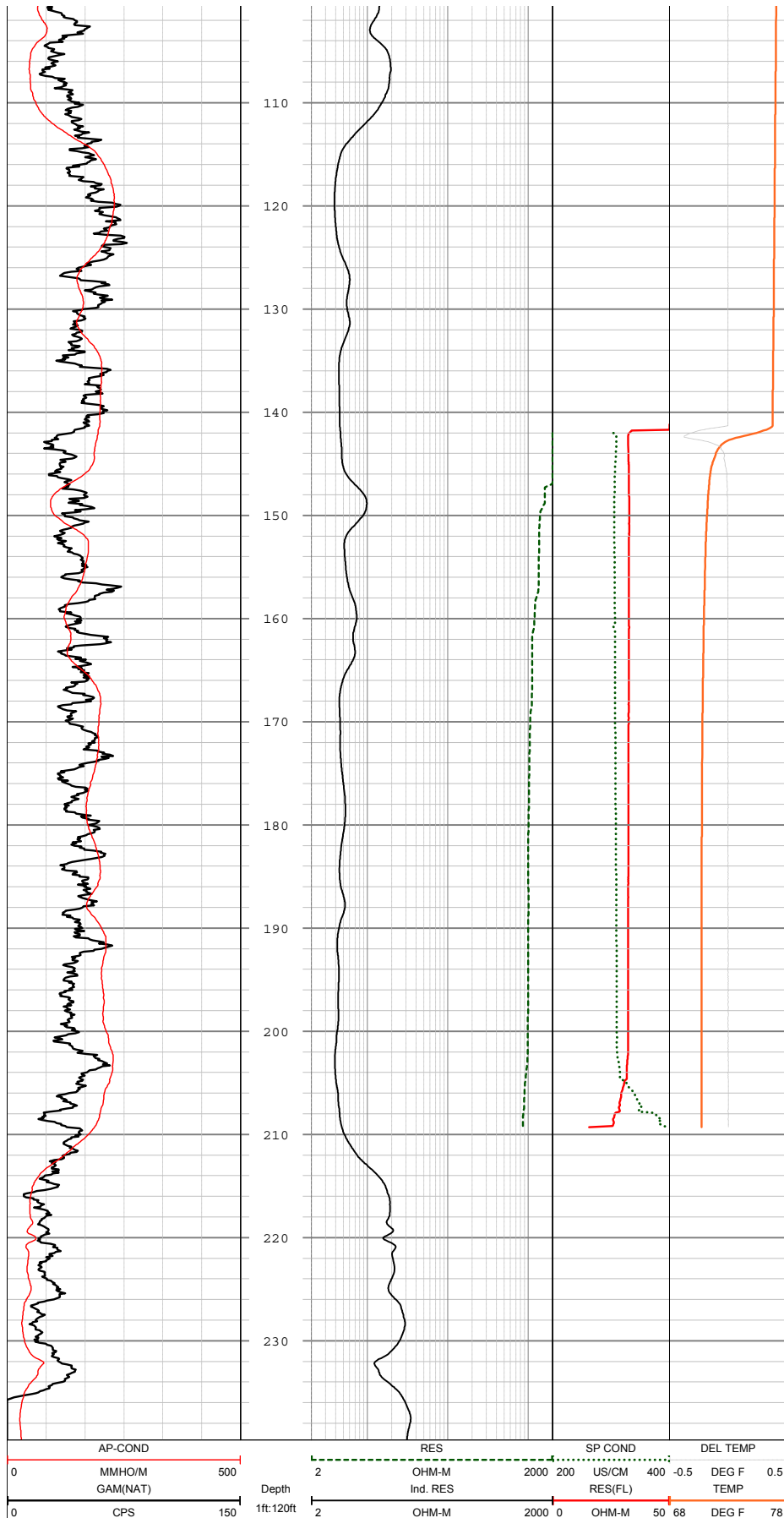


Figure A-1. —Continued

4 Estimated Rates of Groundwater Recharge By Using Environmental Tracers in Montgomery County, Texas, 2008

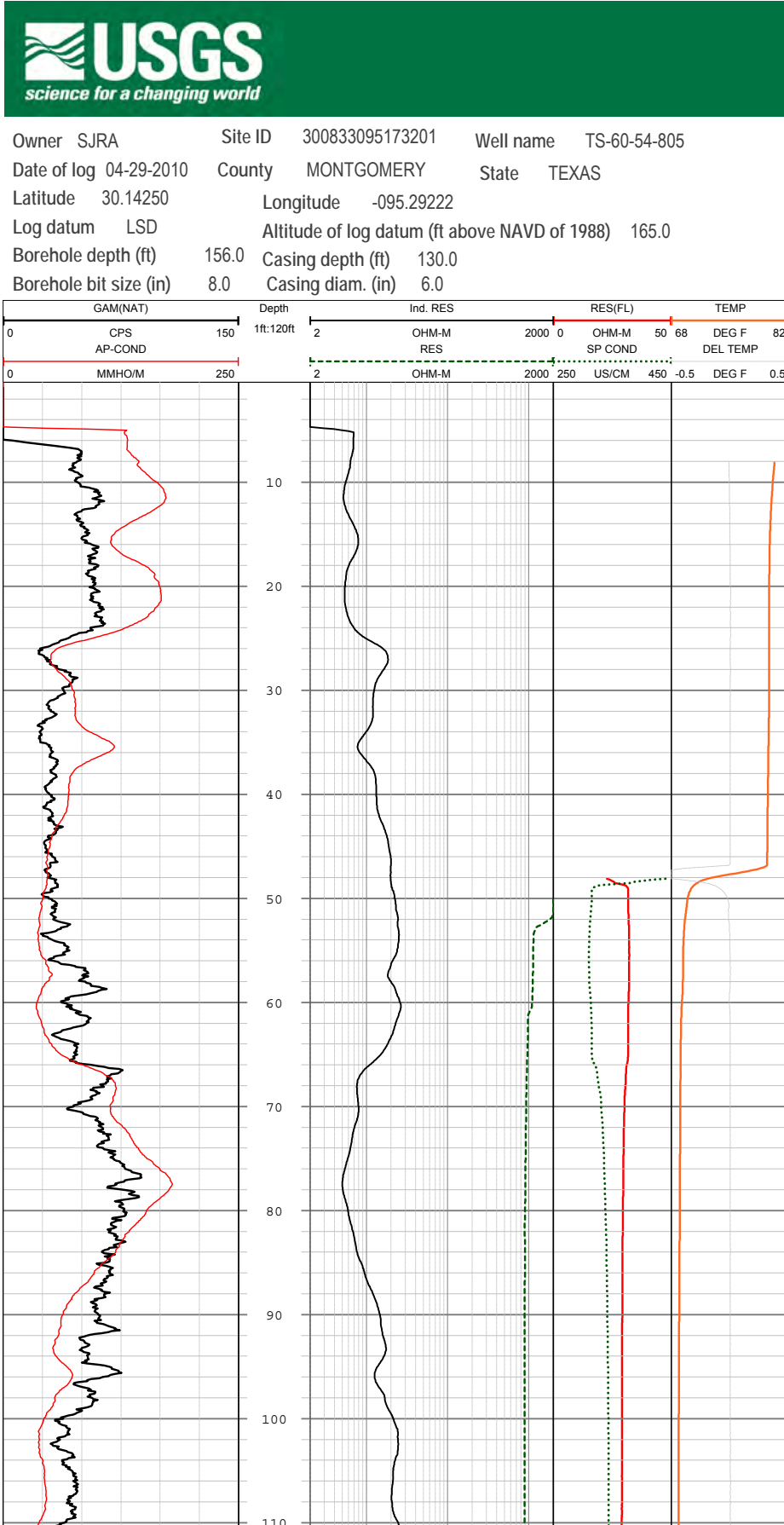


Figure A-2.

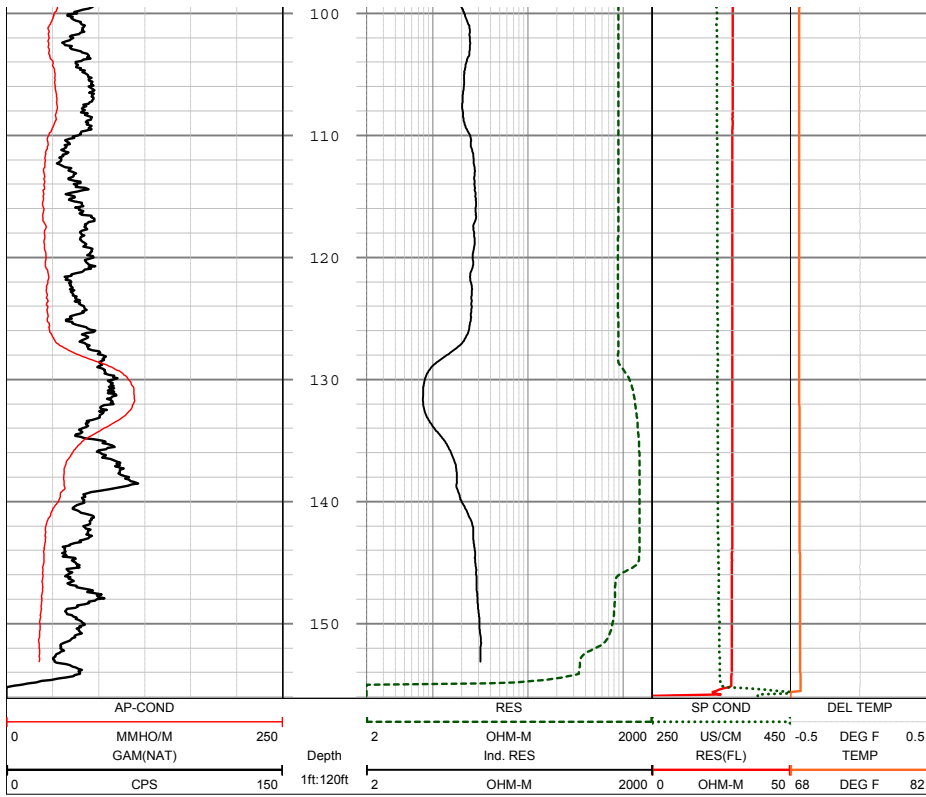


Figure A-2. —Continued

6 Estimated Rates of Groundwater Recharge By Using Environmental Tracers in Montgomery County, Texas, 2008

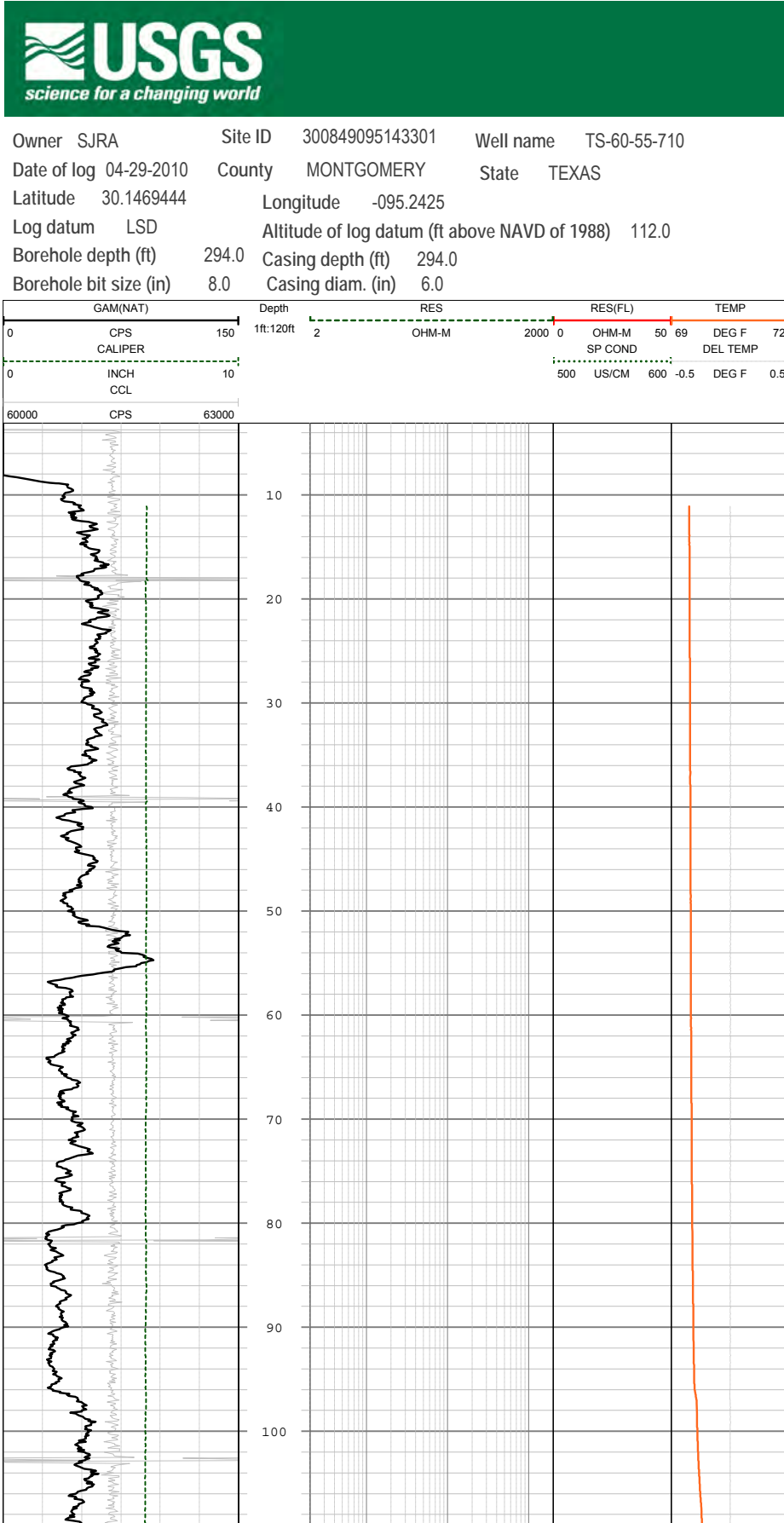


Figure A-3.

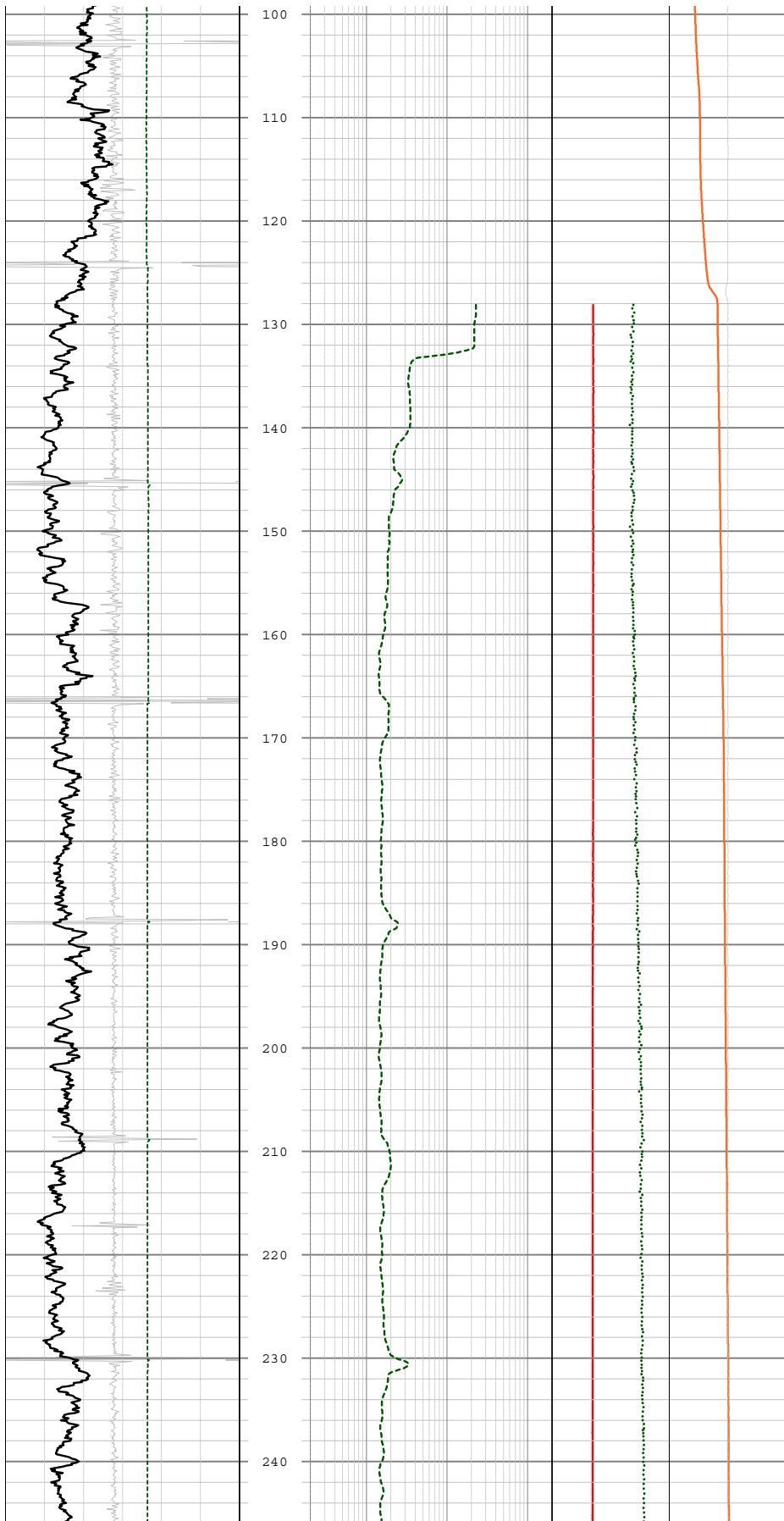


Figure A-3. —Continued

8 Estimated Rates of Groundwater Recharge By Using Environmental Tracers in Montgomery County, Texas, 2008

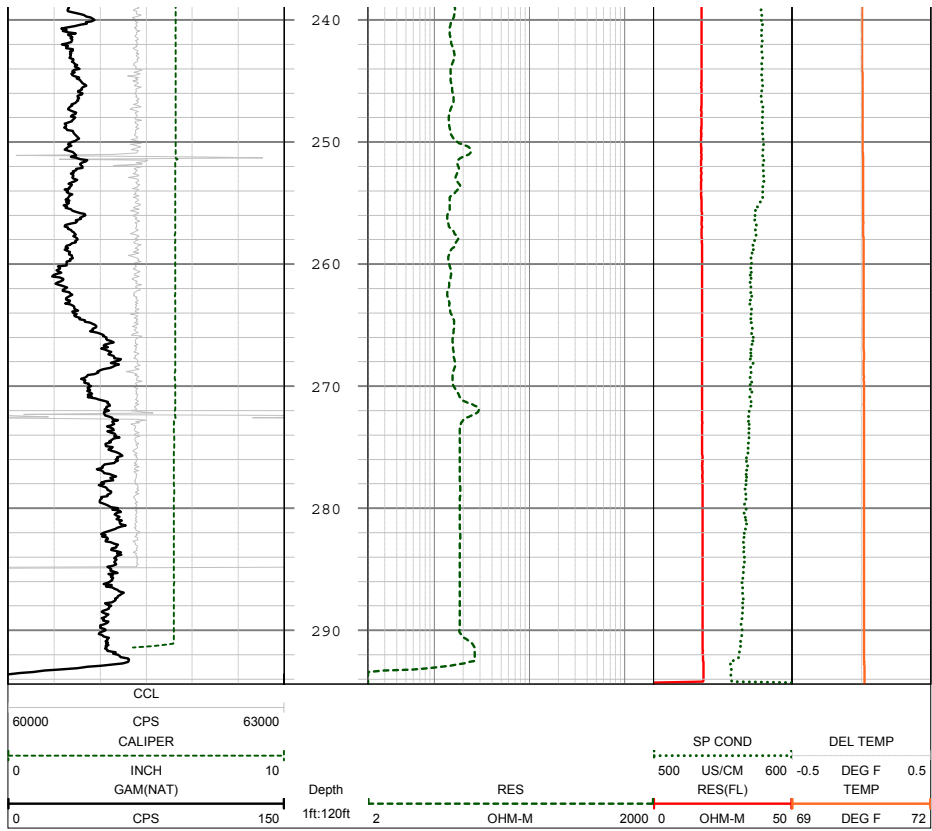


Figure A-3. —Continued



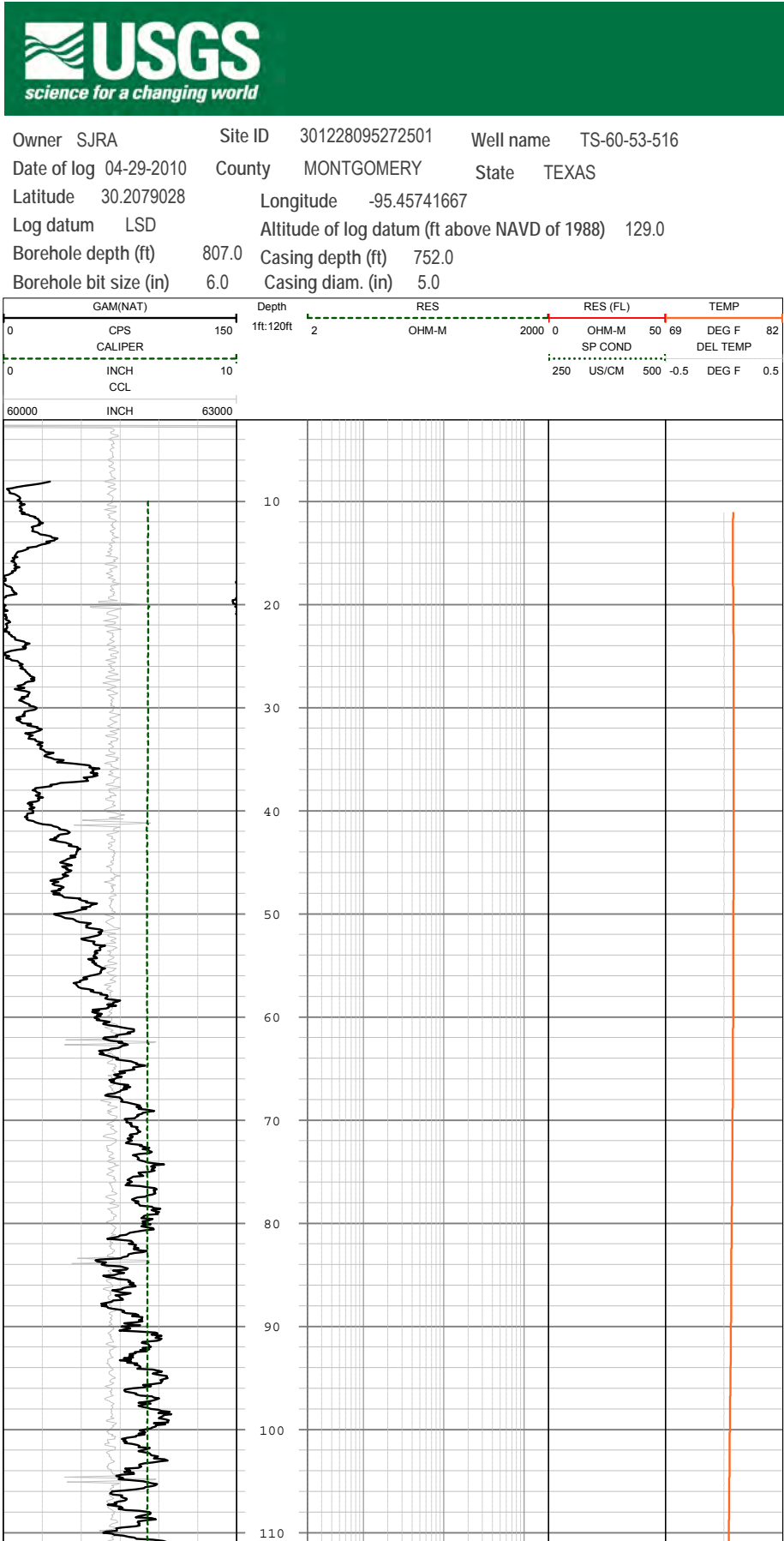


Figure A-4.

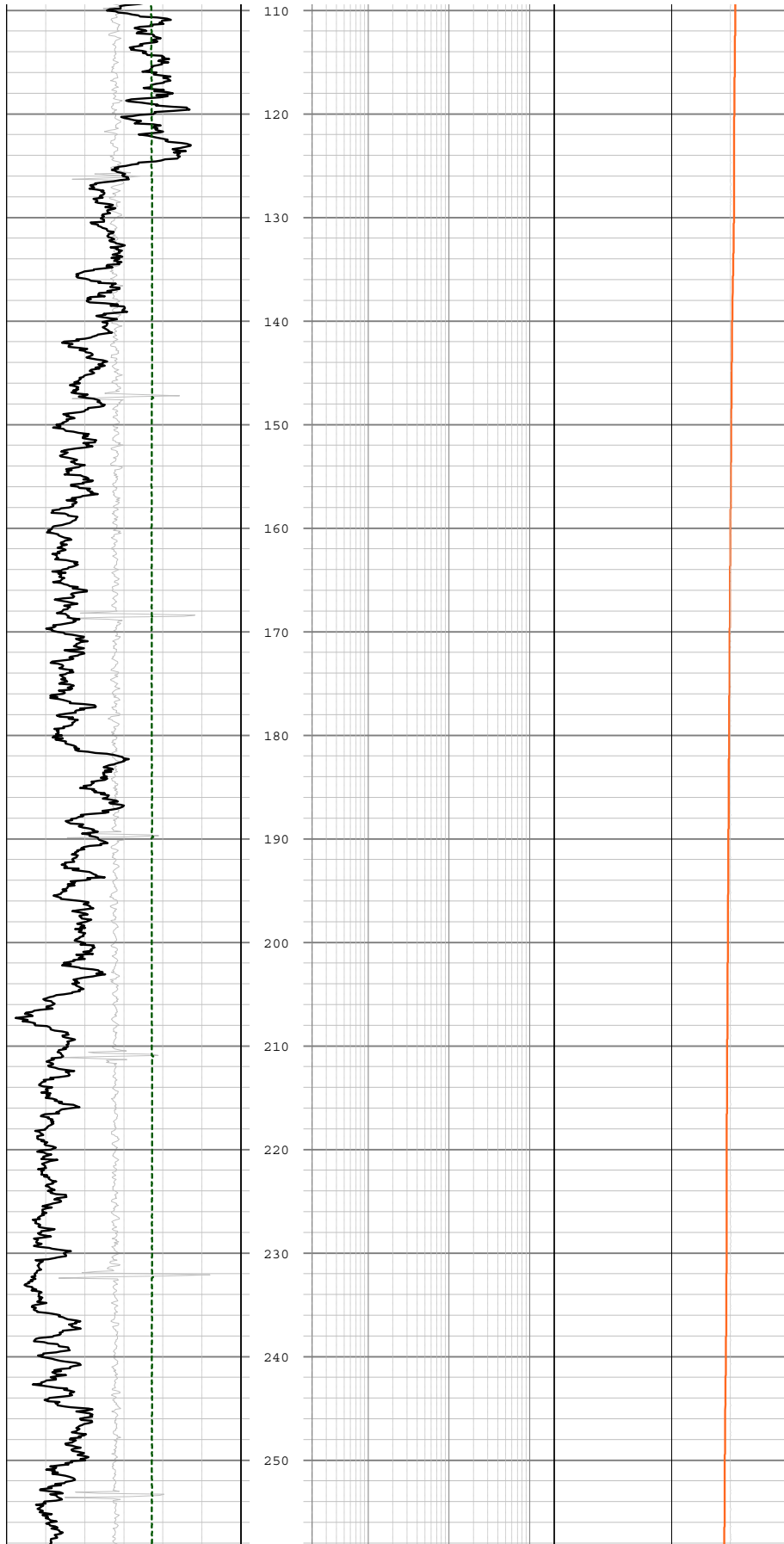


Figure A-4. —Continued

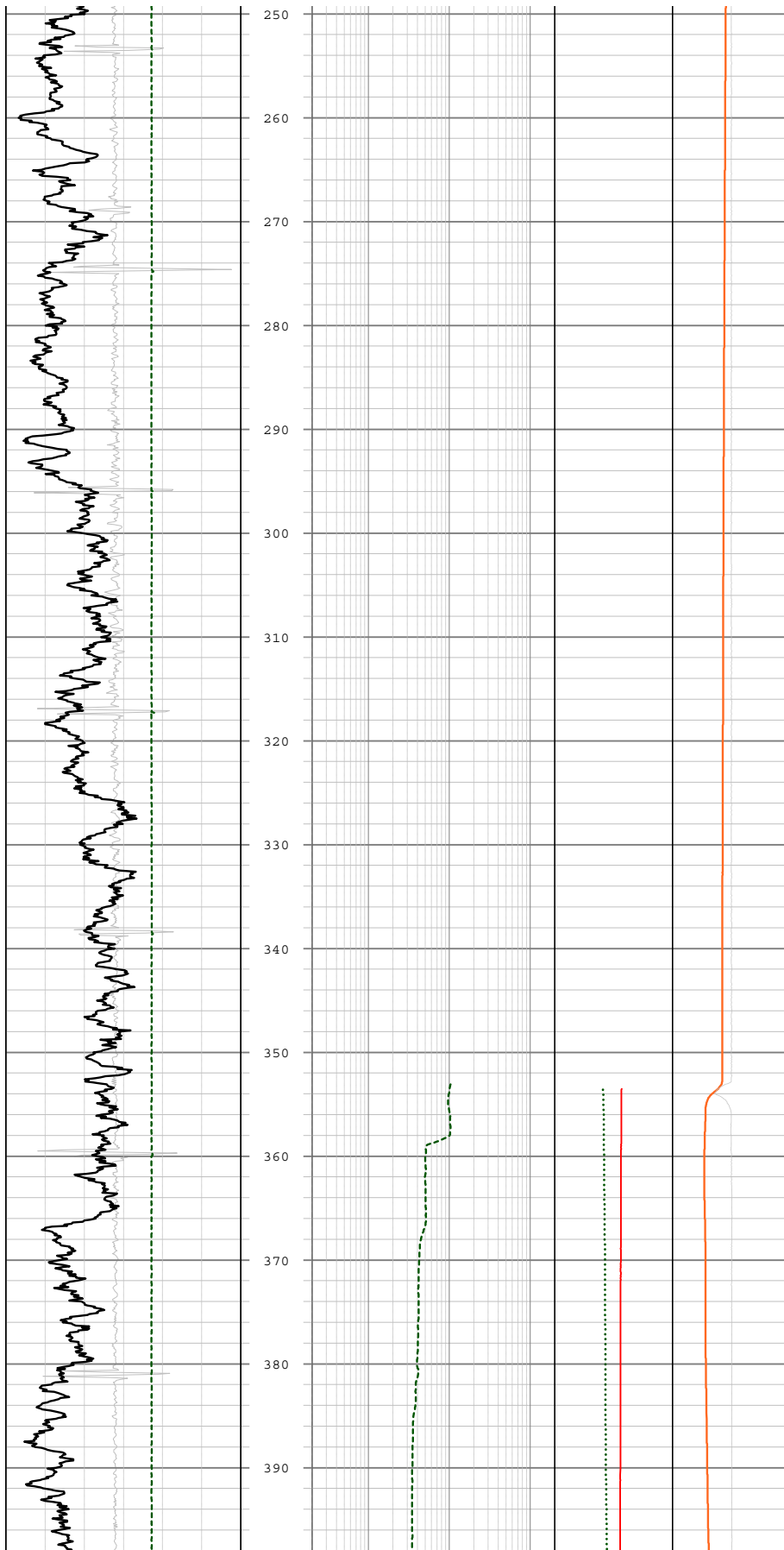


Figure A-4. —Continued

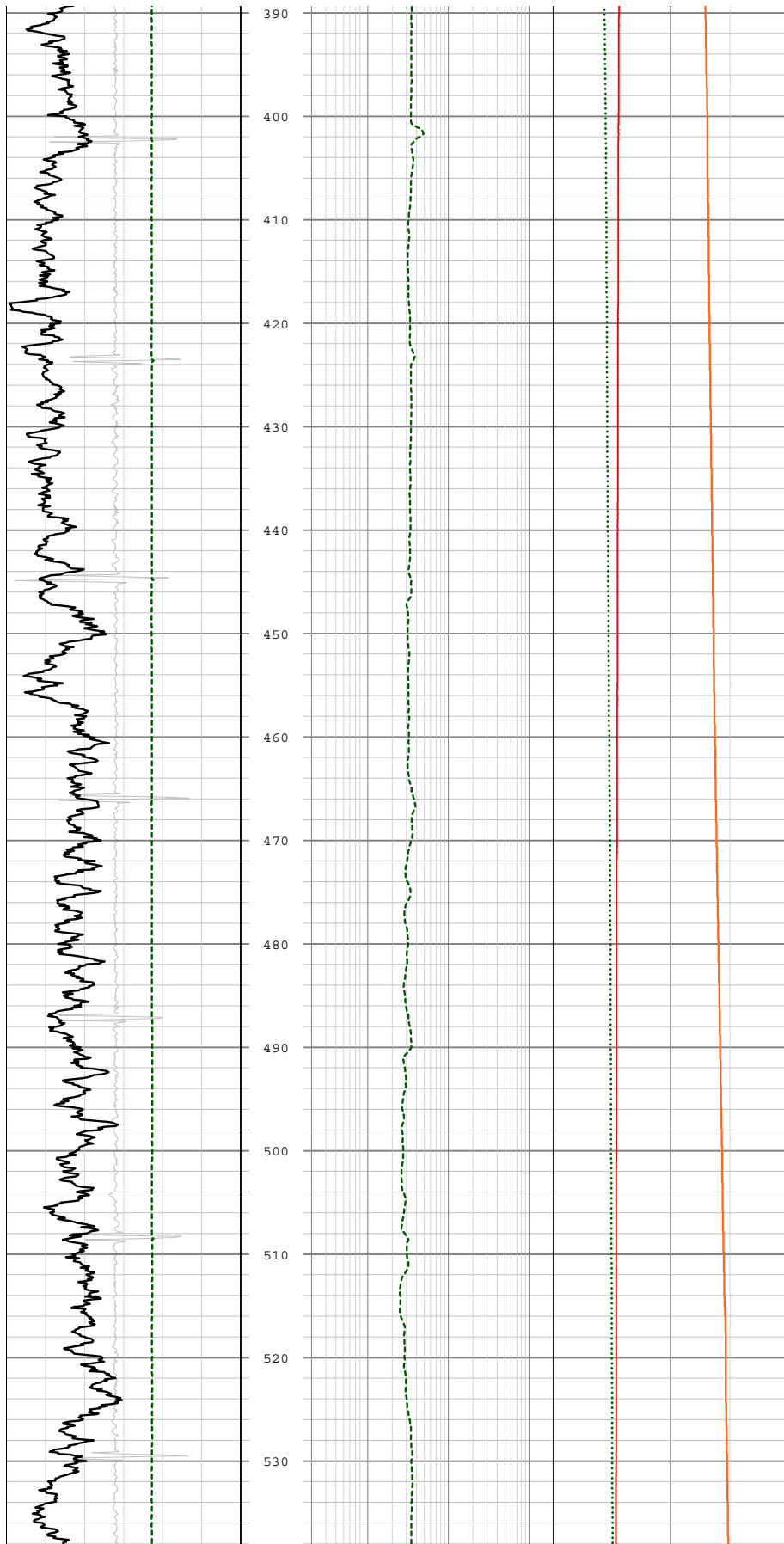


Figure A-4. —Continued

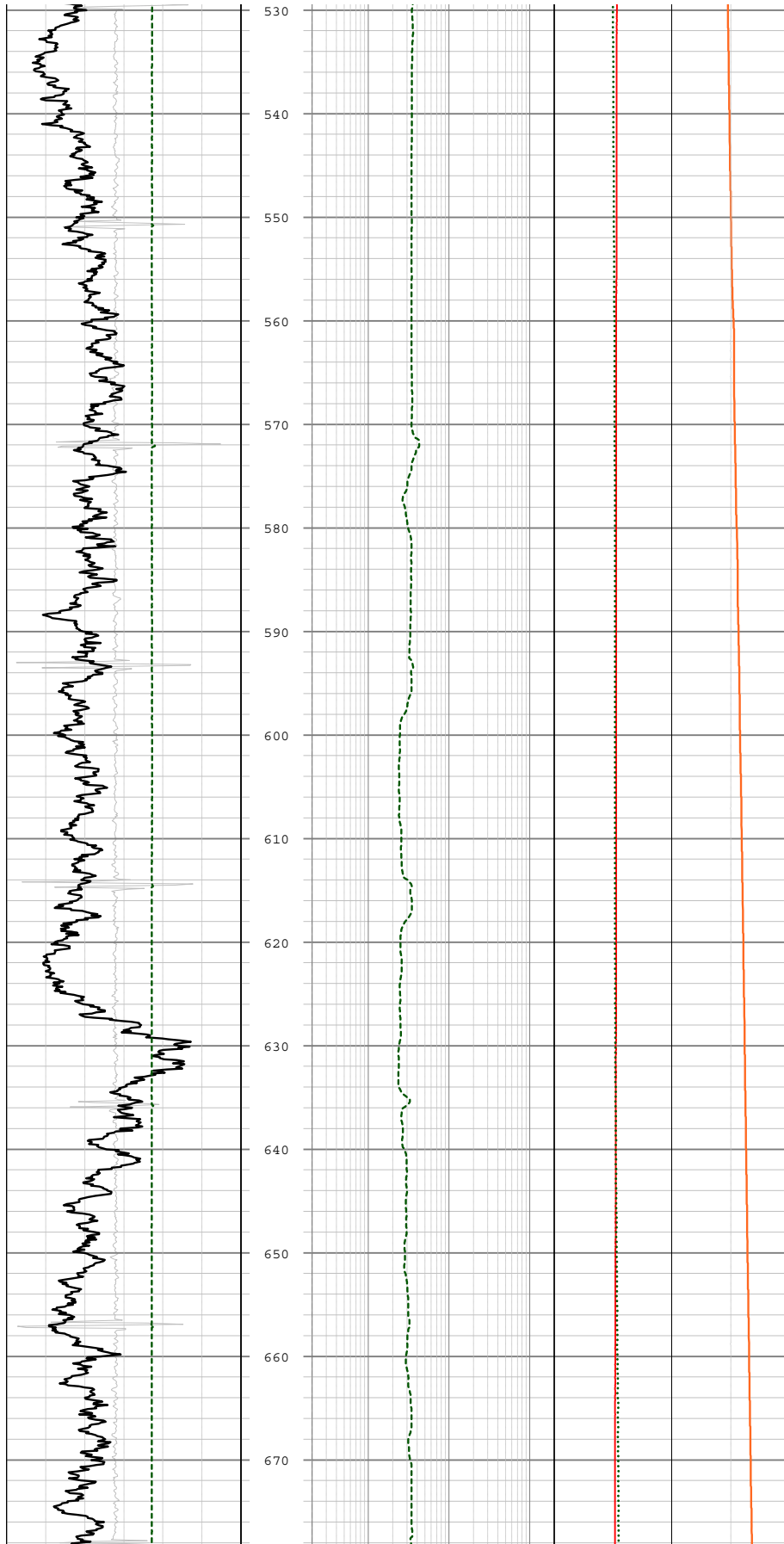


Figure A-4. —Continued

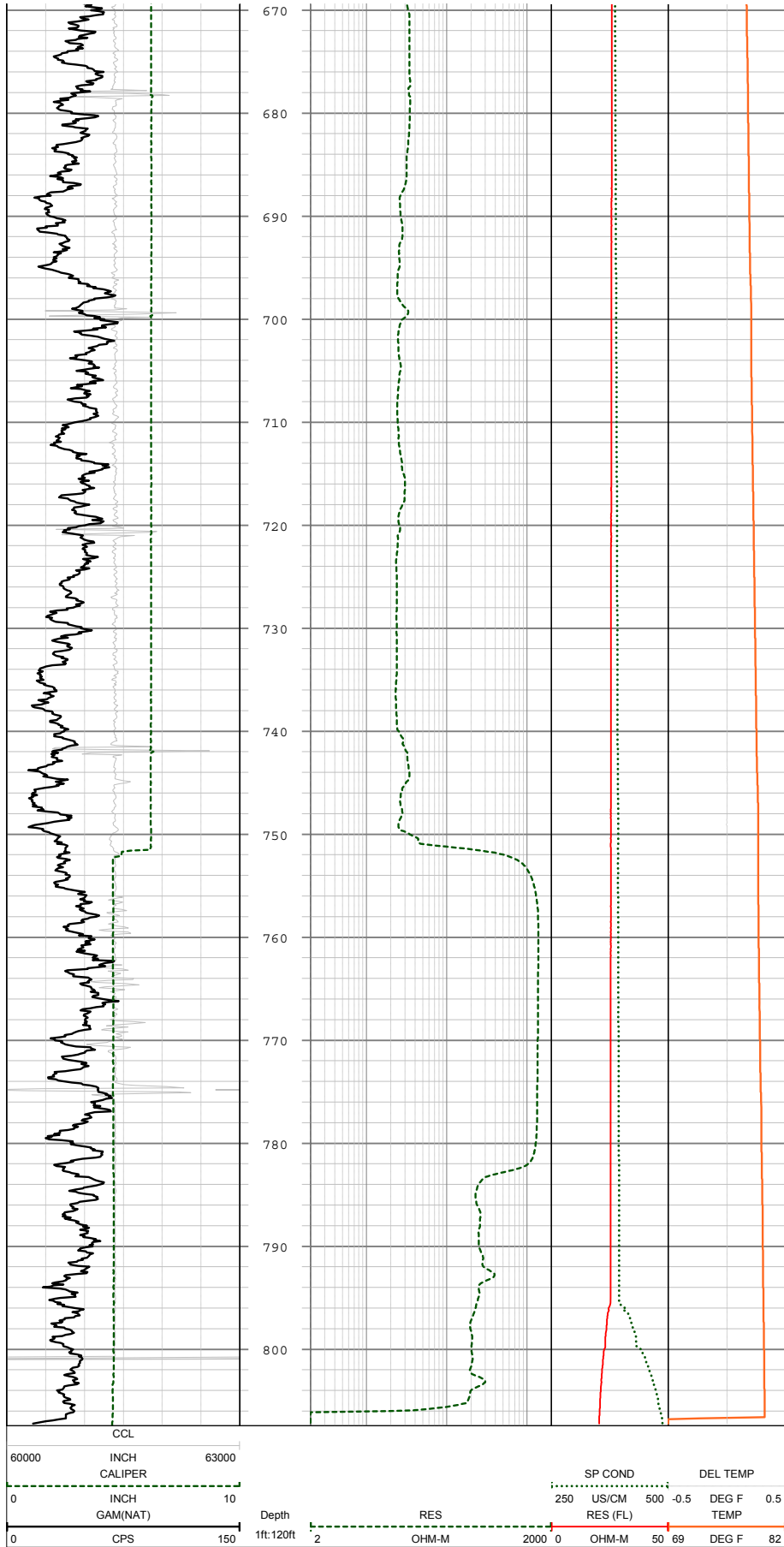


Figure A-4. —Continued

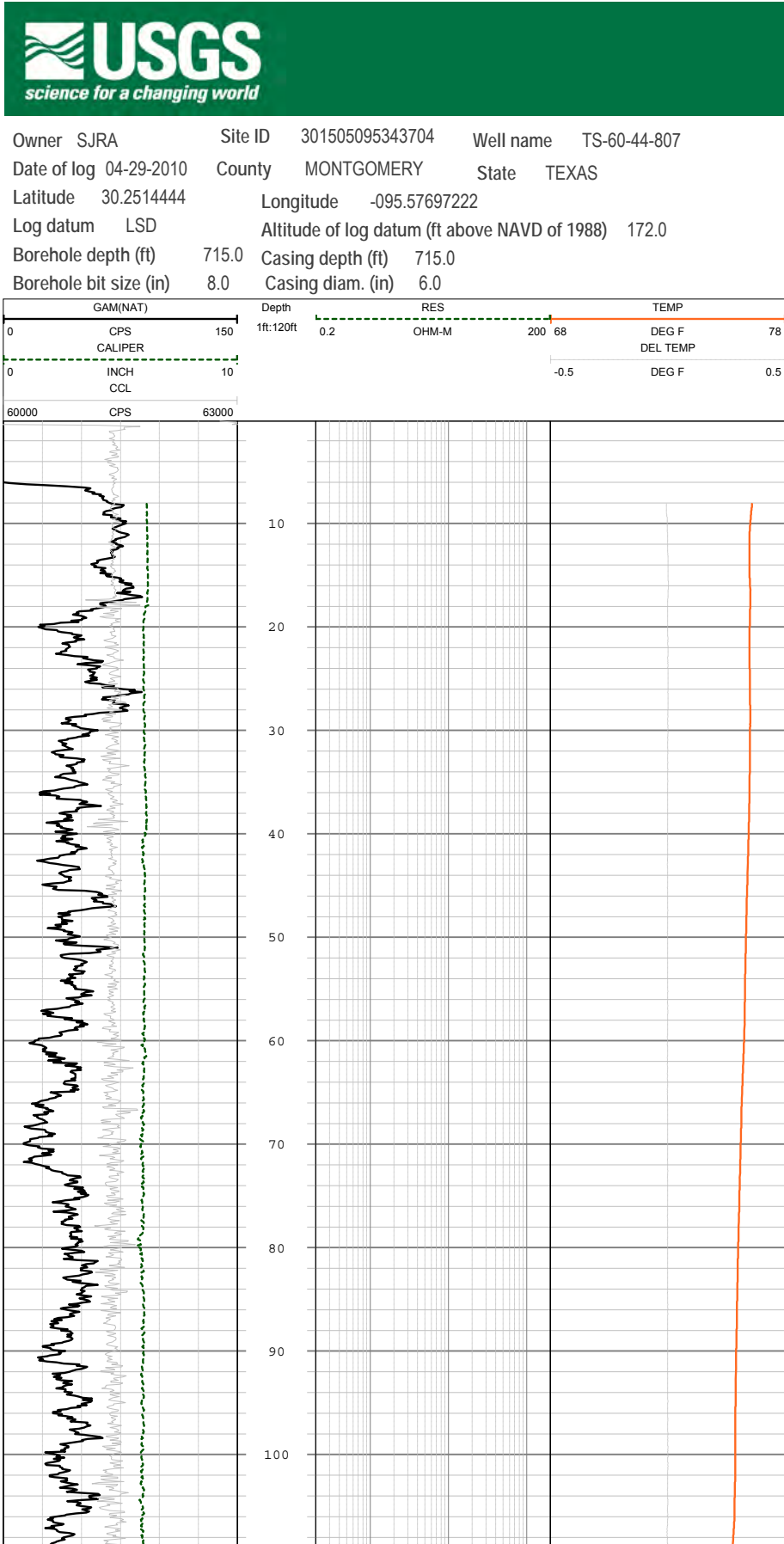


Figure A-5.

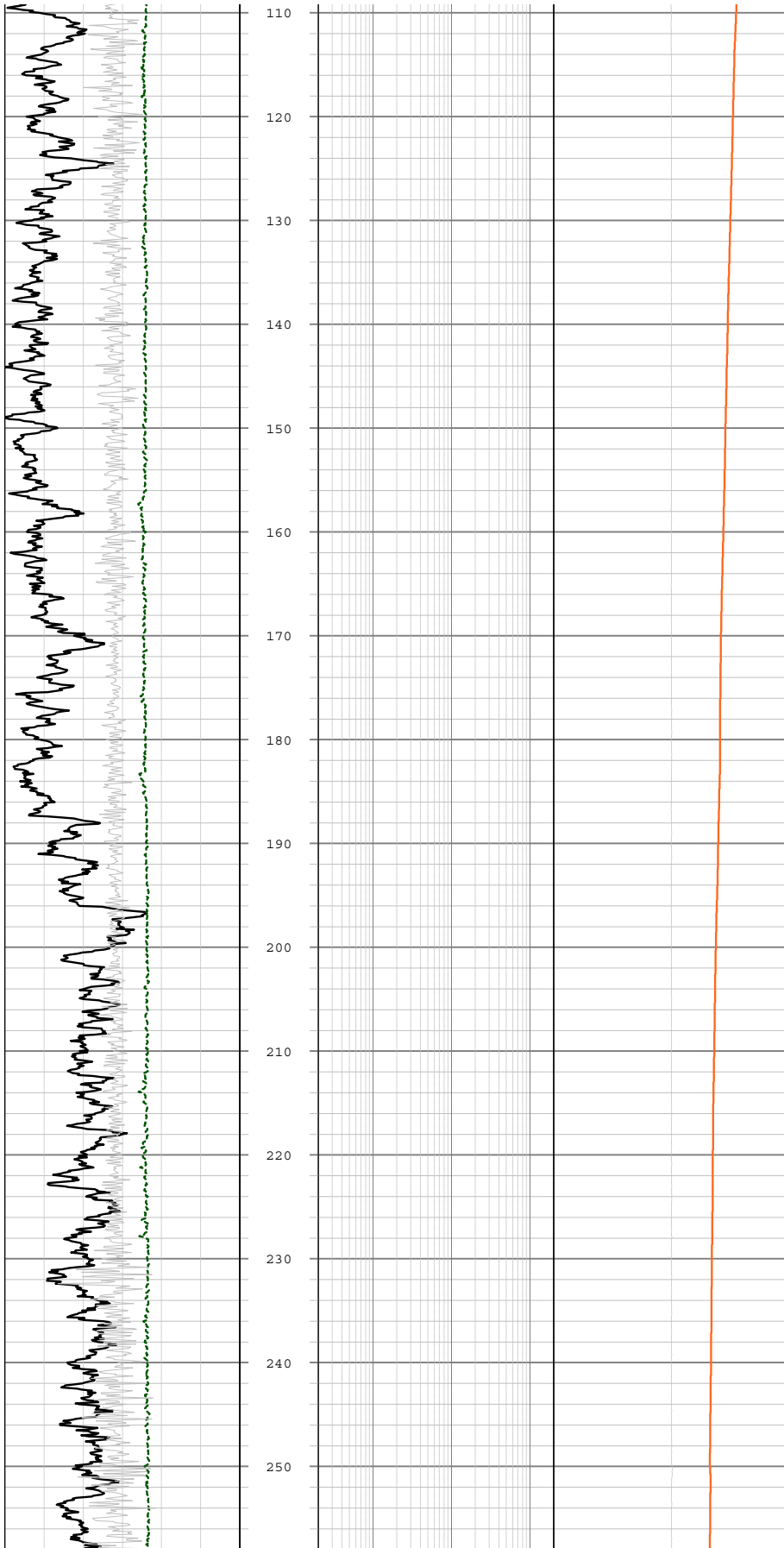


Figure A-5. —Continued



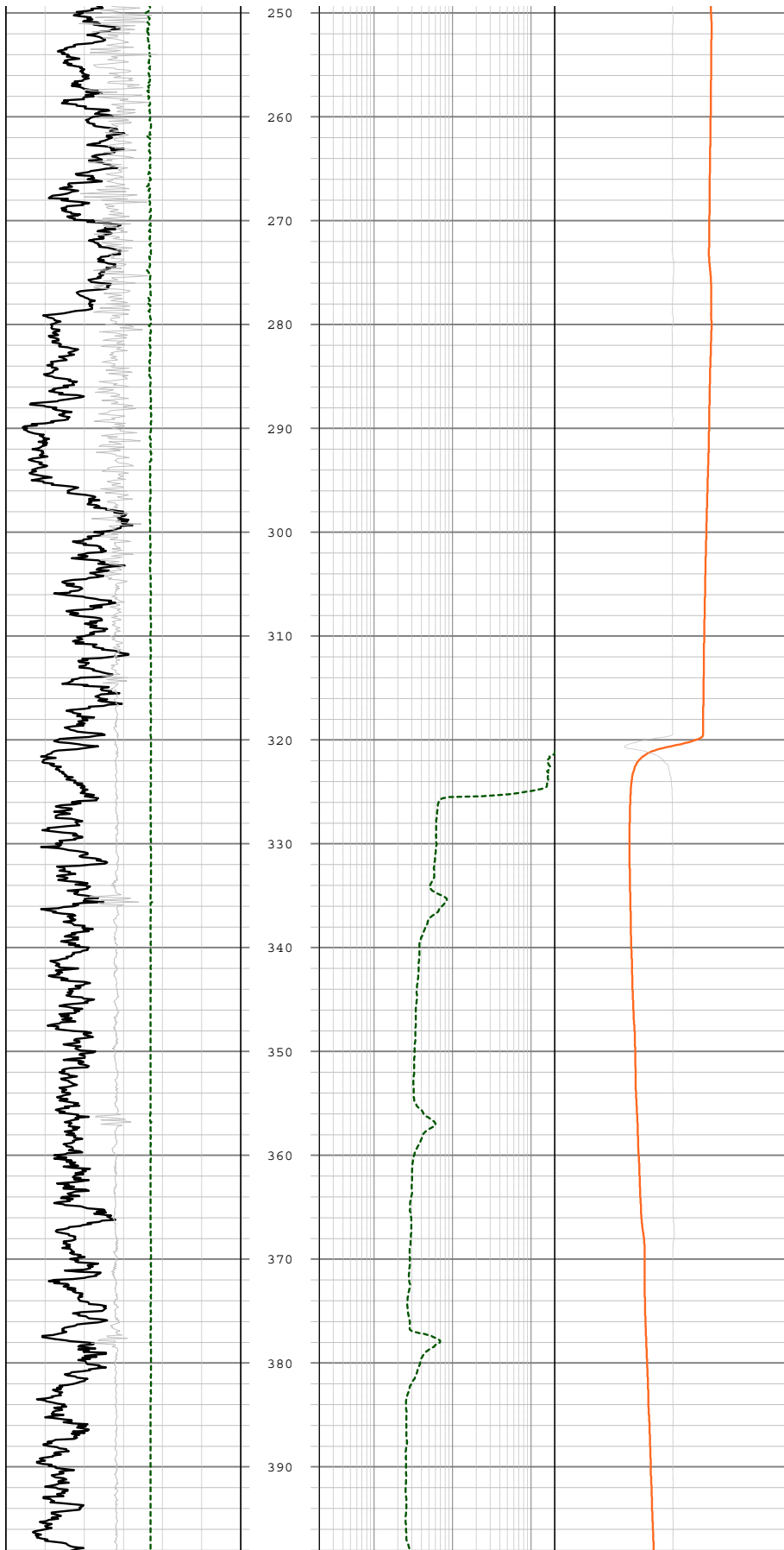


Figure A-5. —Continued

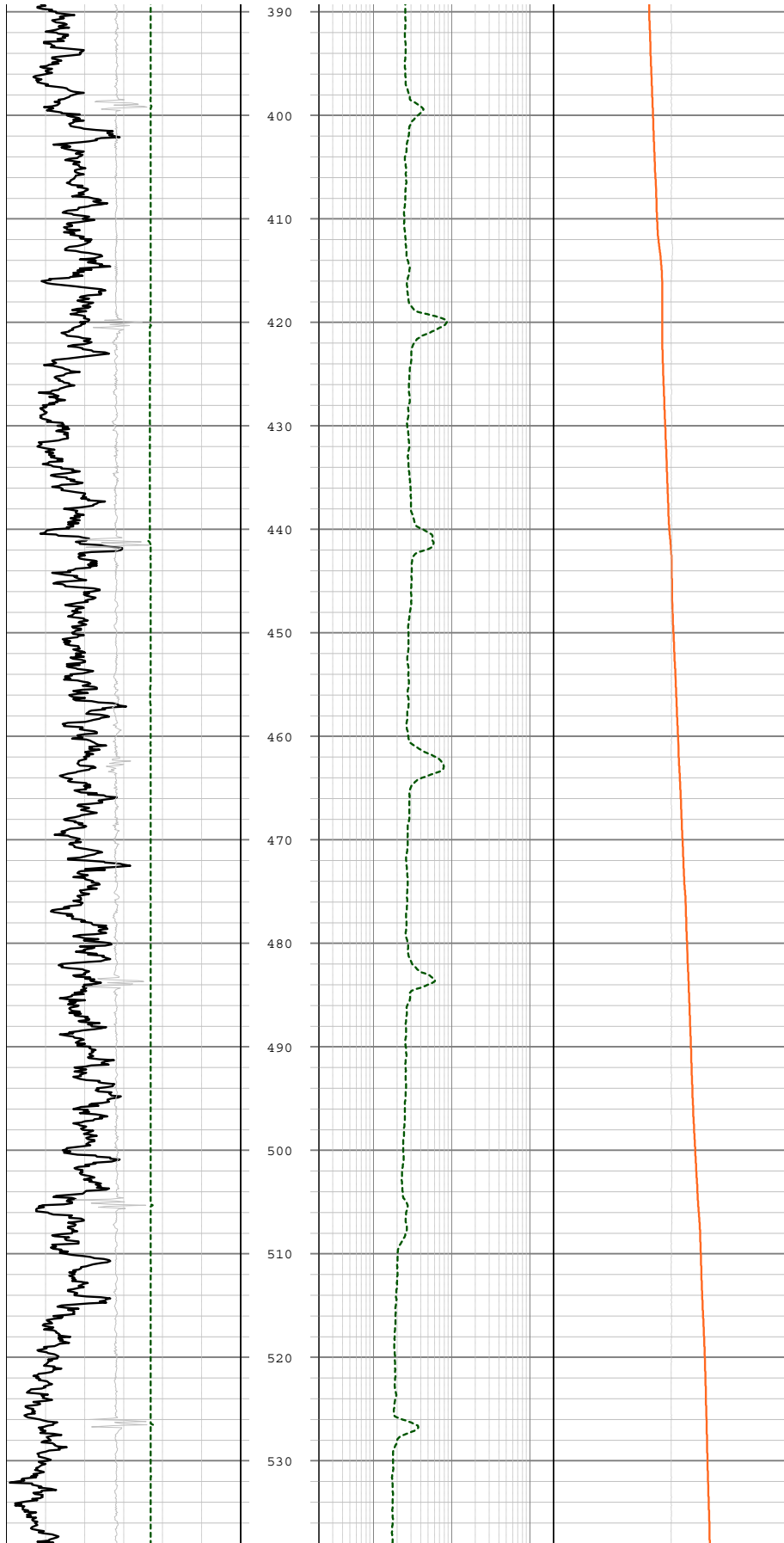


Figure A-5. —Continued

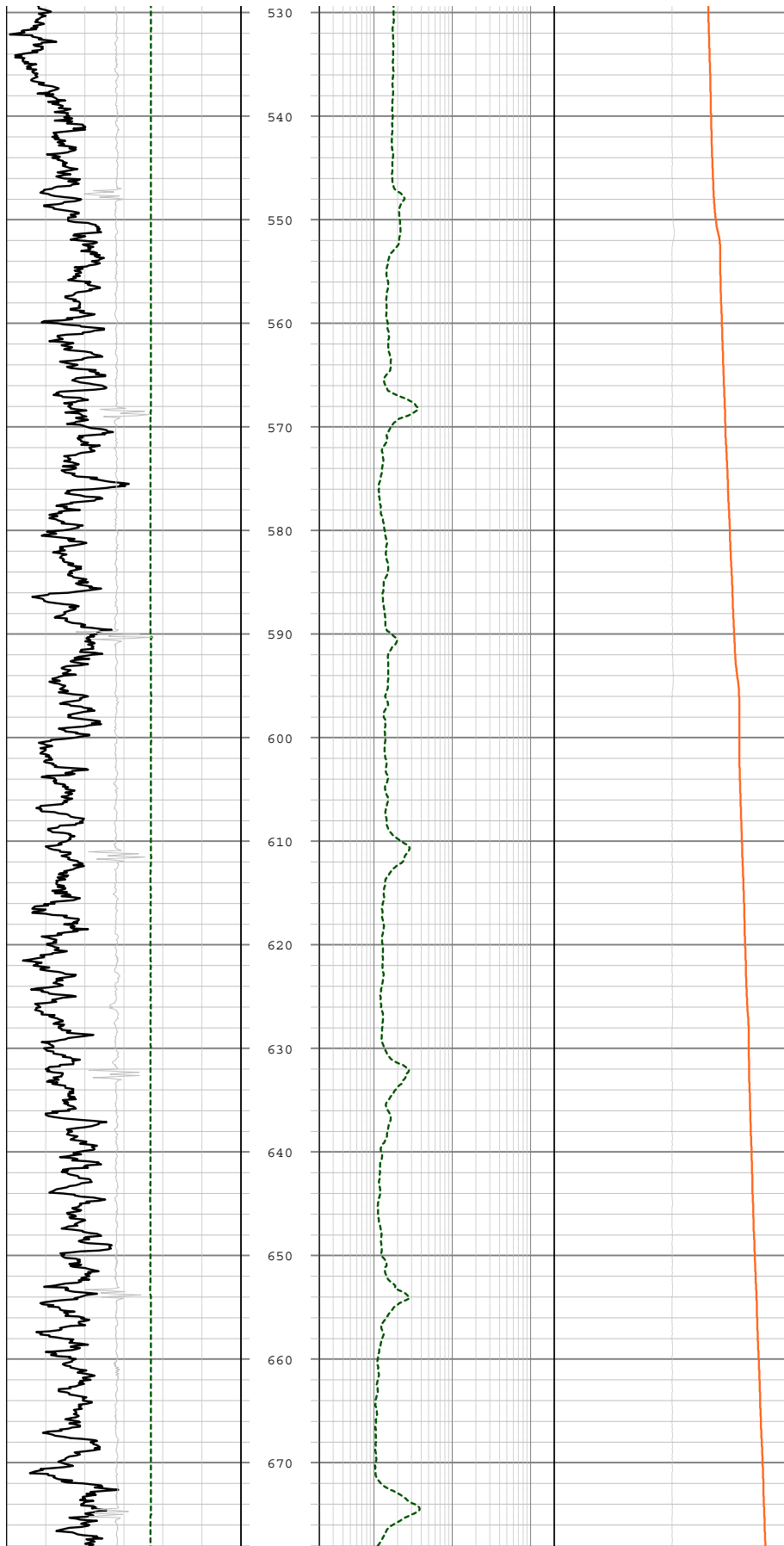


Figure A-5. —Continued

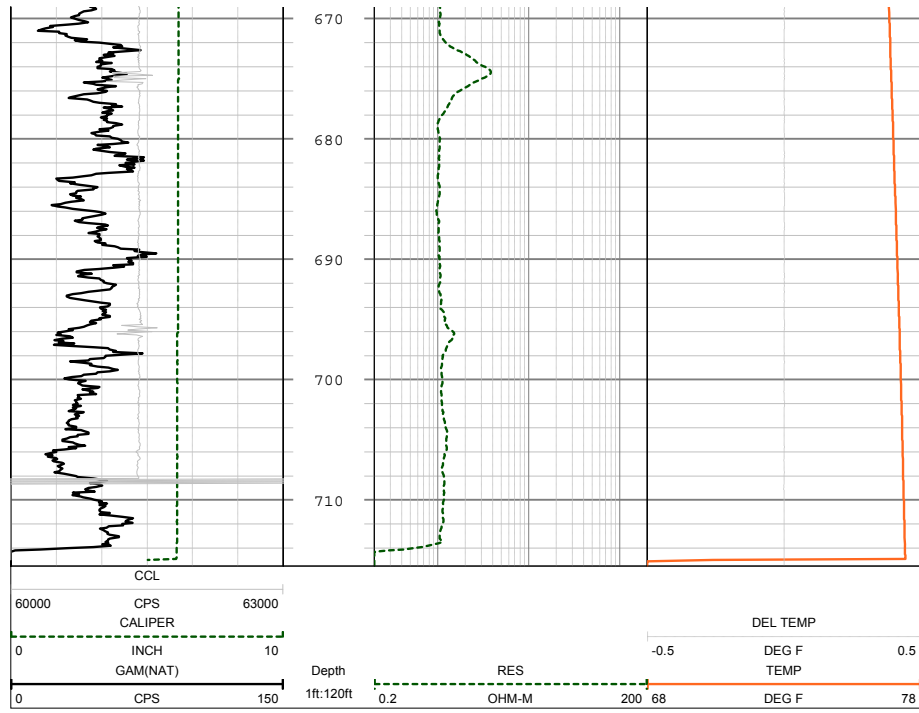


Figure A-5. —Continued

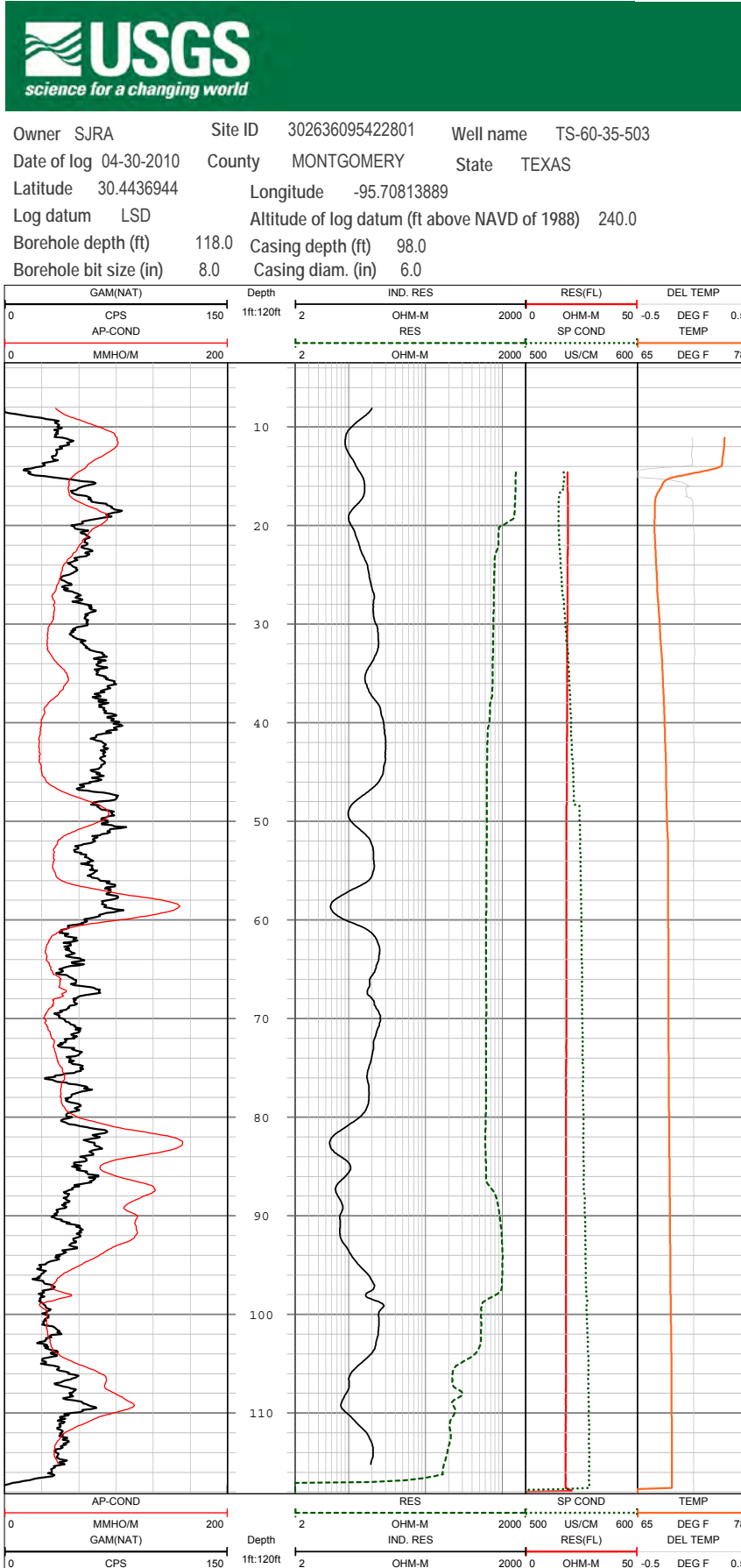


Figure A-6.

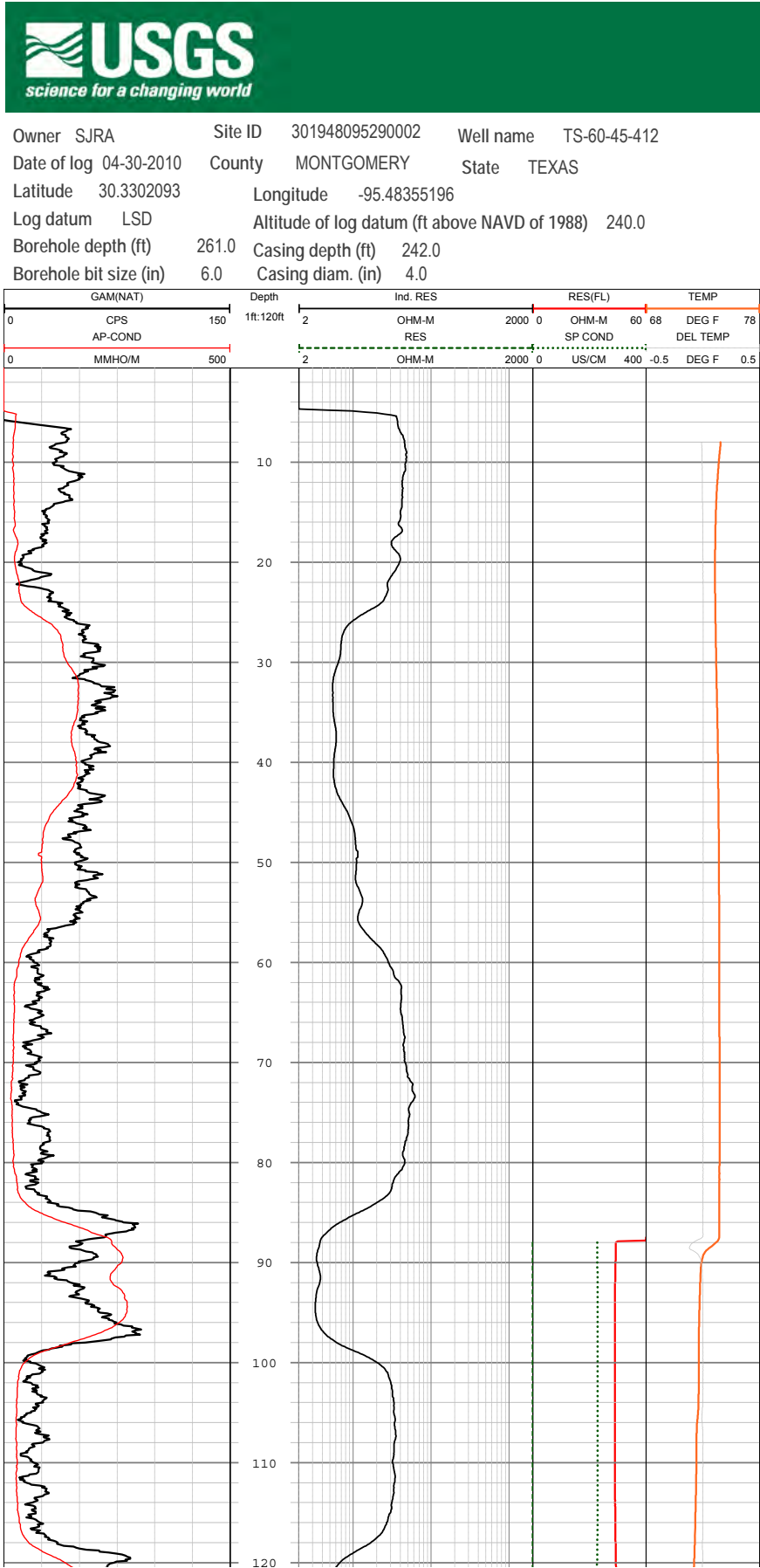


Figure A-7.

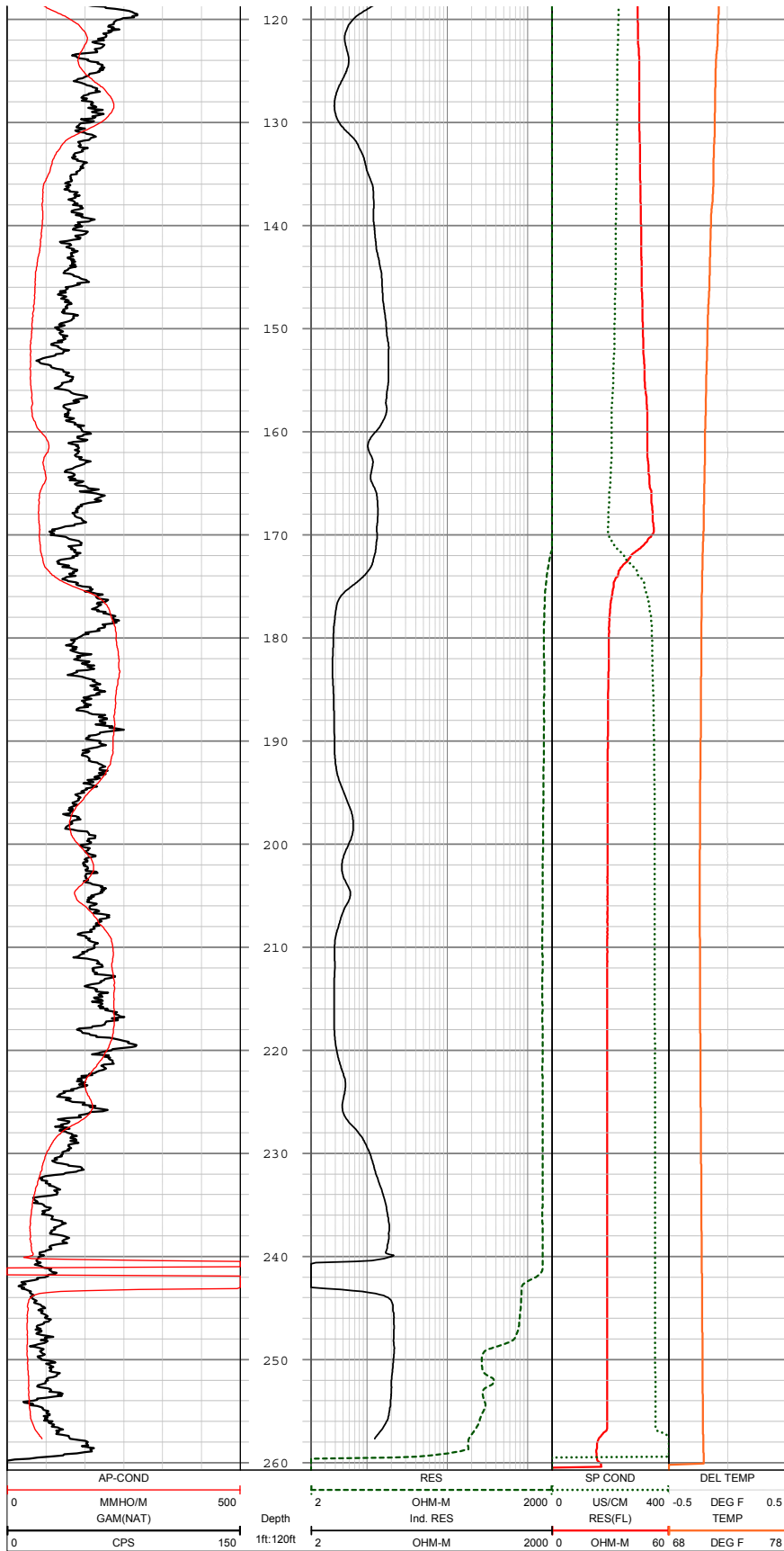


Figure A-7. —Continued



Owner HGSD Site ID 303143095334801 Well name YU-60-28-802  
 Date of log 04-30-2010 County WALKER State TEXAS  
 Latitude 30.5283675 Longitude -095.56413856  
 Log datum LSD Altitude of log datum (ft above NAVD of 1988) 315.0  
 Borehole depth (ft) 153.6 Casing depth (ft) NK  
 Borehole bit size (in) 6.0 Casing diam. (in) 4.0

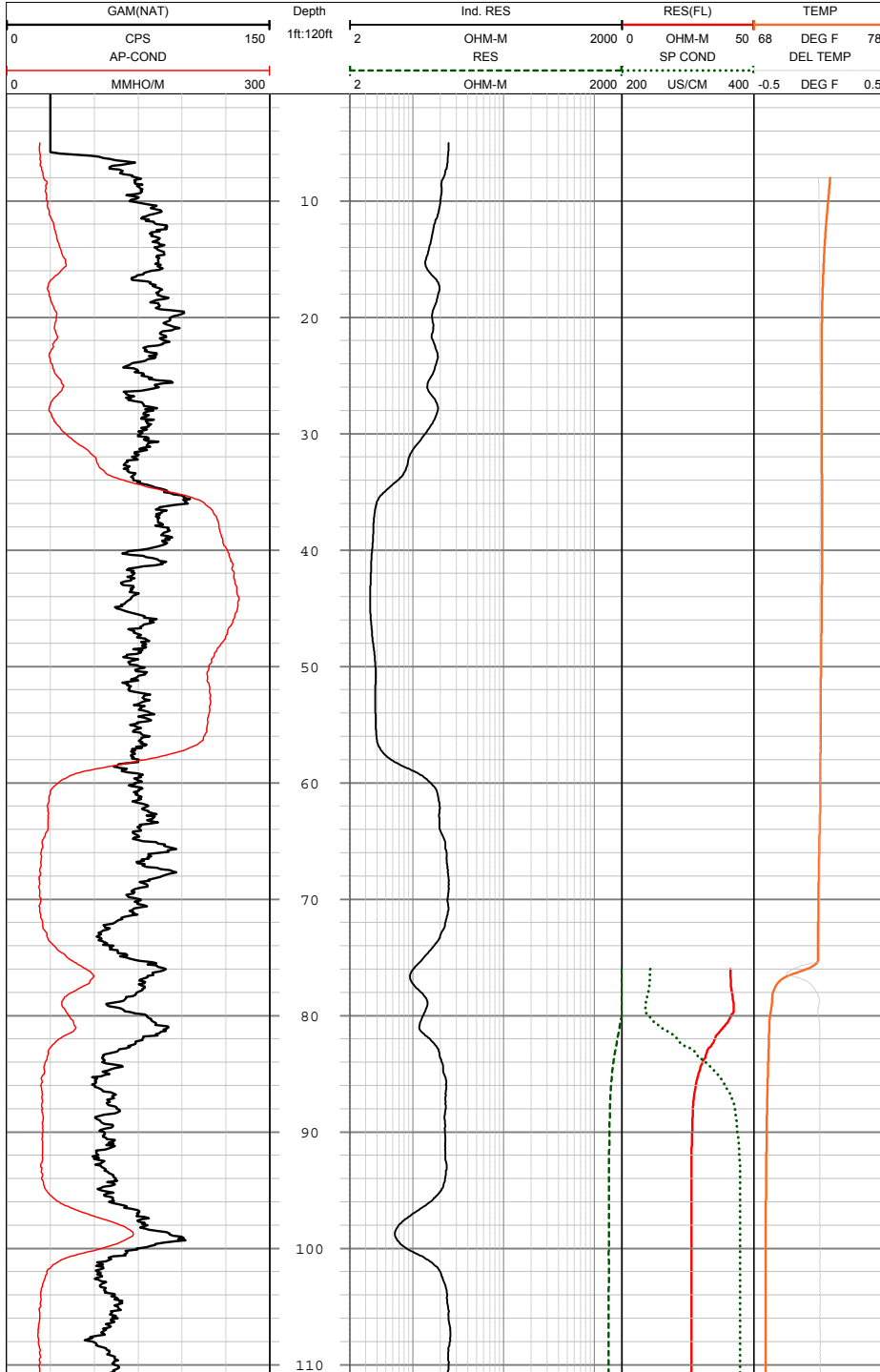


Figure A-8.



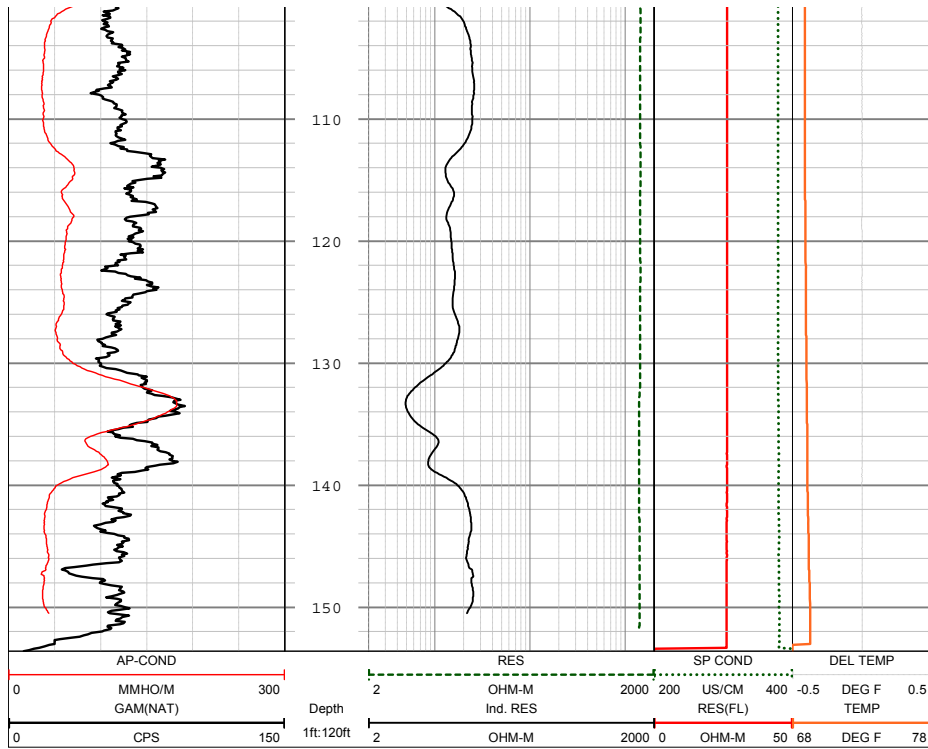


Figure A-8. —Continued