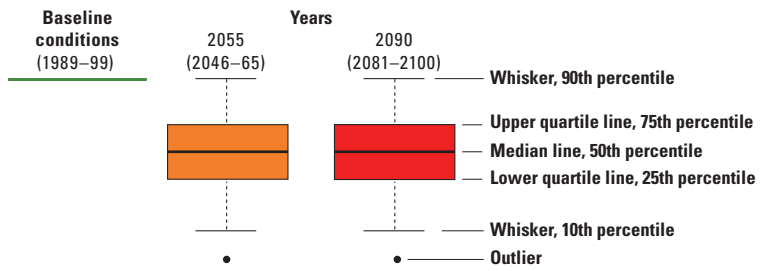
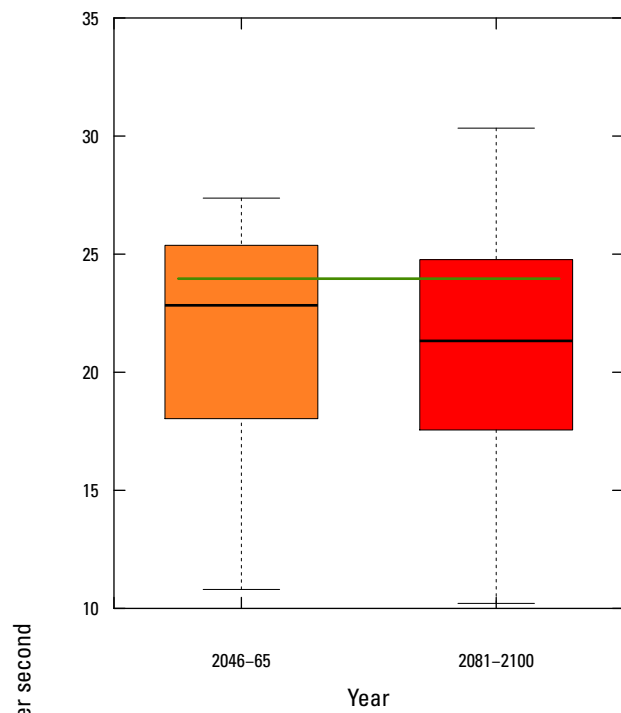
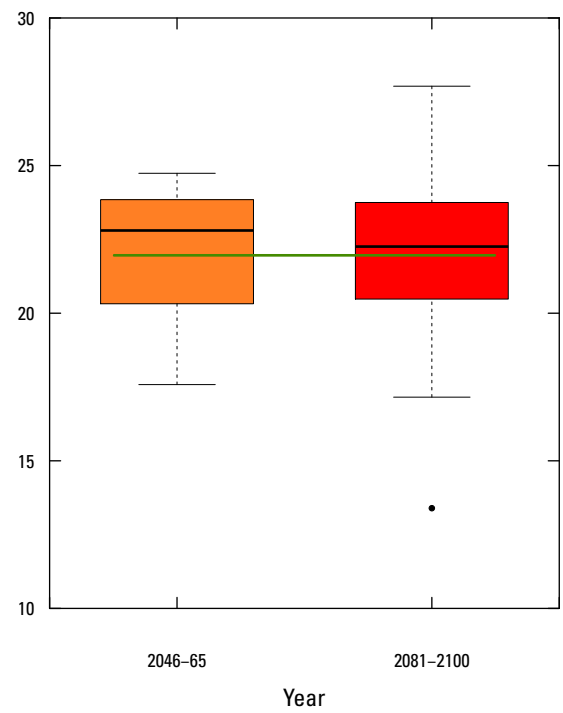


EXPLANATION

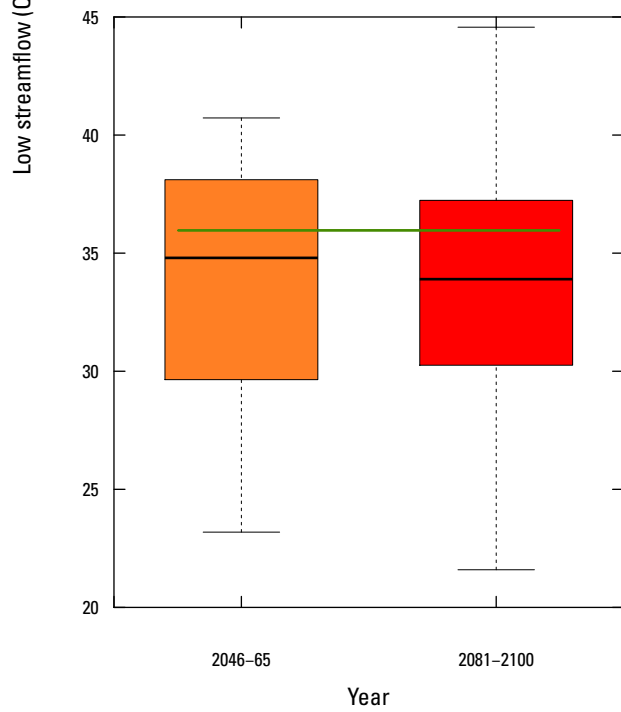




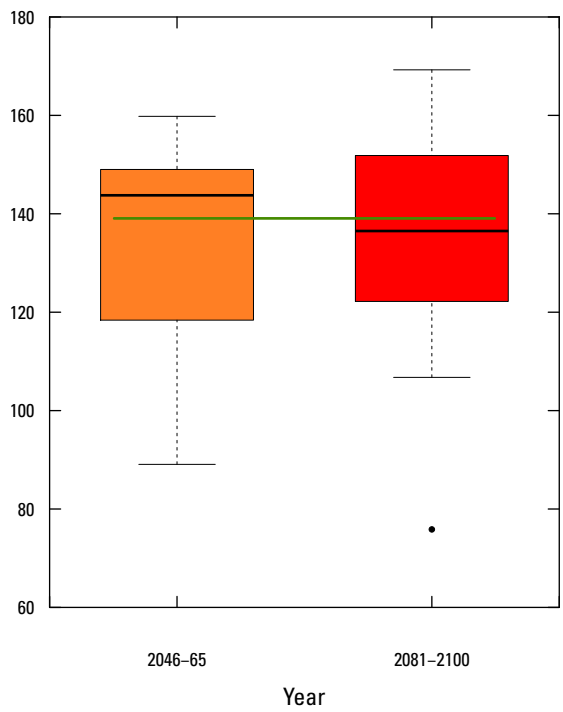
U.S. Geological Survey streamgauge station number 04093000, Deep River at Lake George Outlet at Hobart, Indiana



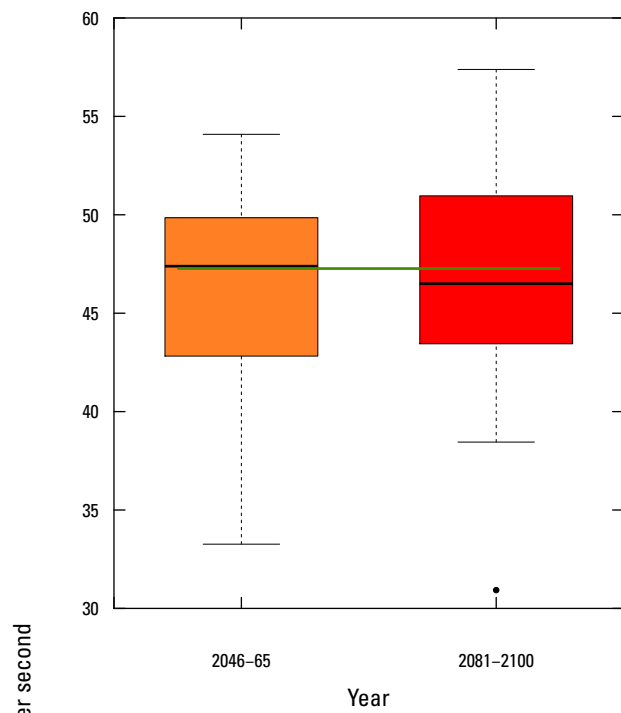
U.S. Geological Survey streamgauge station number 04094000, Little Calumet River at Porter, Indiana



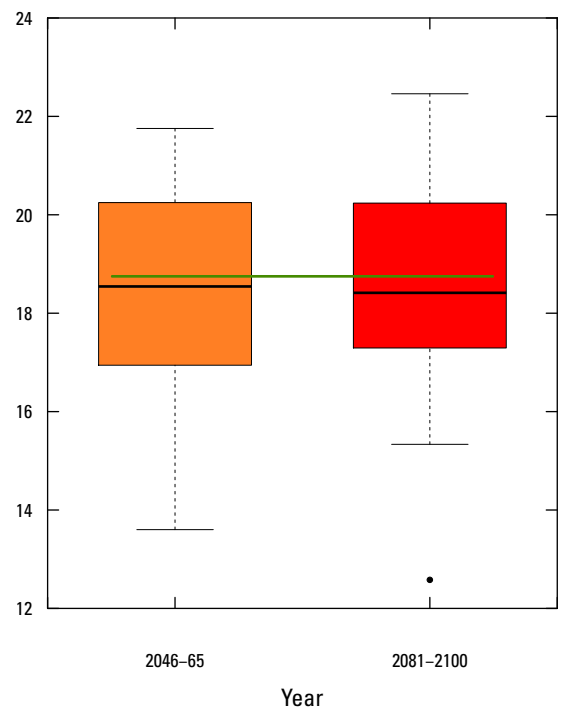
U.S. Geological Survey streamgauge station number 04094500, Salt Creek near McCool, Indiana



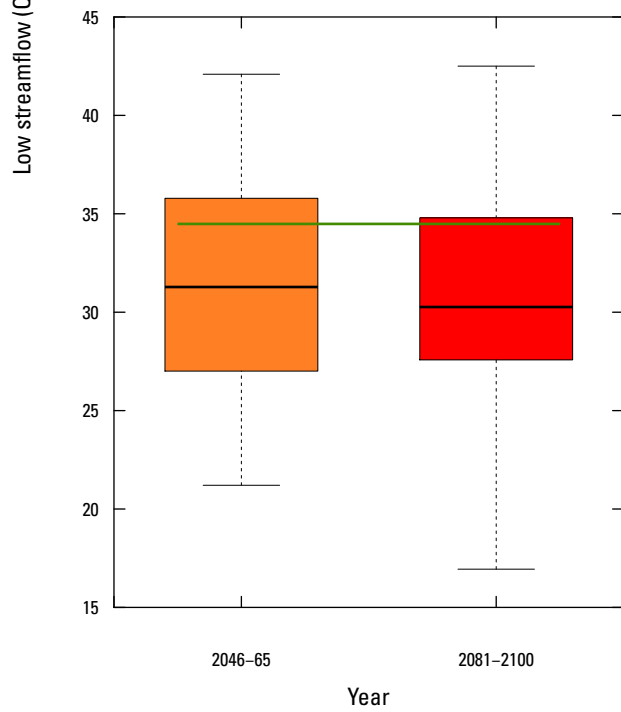
U.S. Geological Survey streamgauge station number 04095090, Burns Ditch at Portage, Indiana



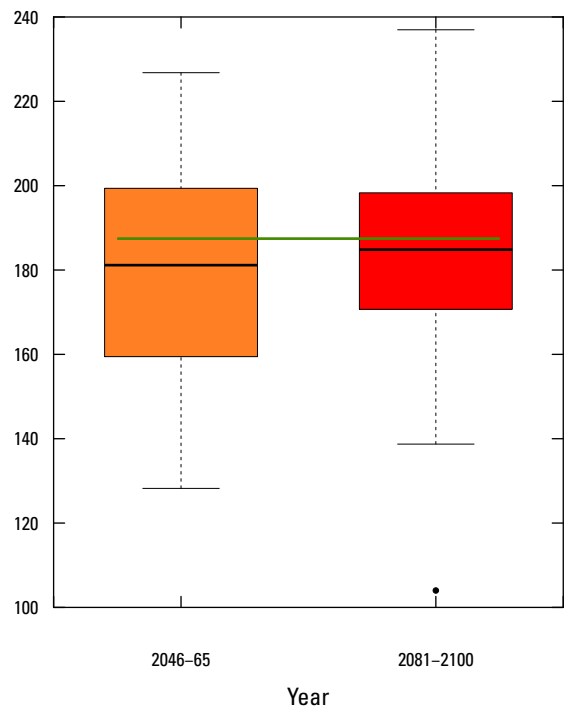
U.S. Geological Survey streamgage station number 04095300, Trail Creek at Michigan City, Indiana



U.S. Geological Survey streamgage station number 04096100, Galena River near Laporte, Indiana

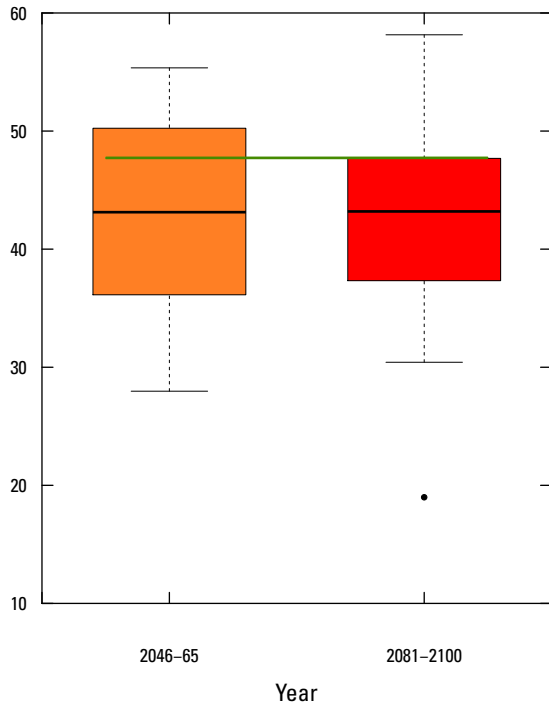


U.S. Geological Survey streamgage station number 04099510, Pigeon Creek near Angola, Indiana

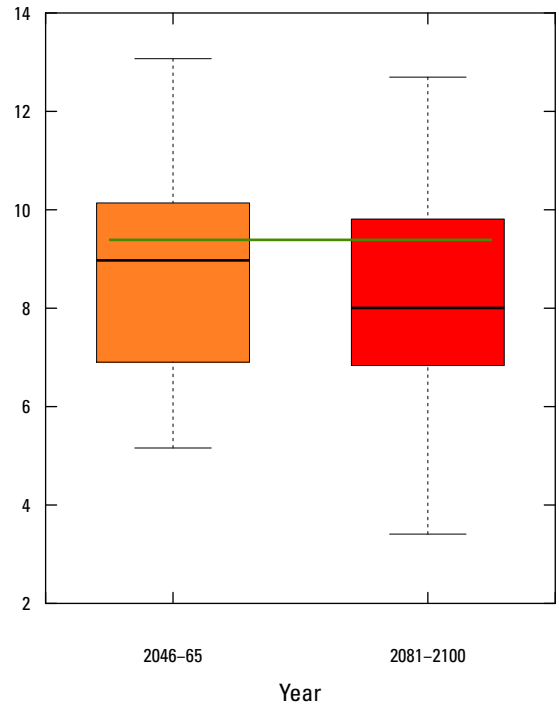


U.S. Geological Survey streamgage station number 04099750, Pigeon River near Scott, Indiana

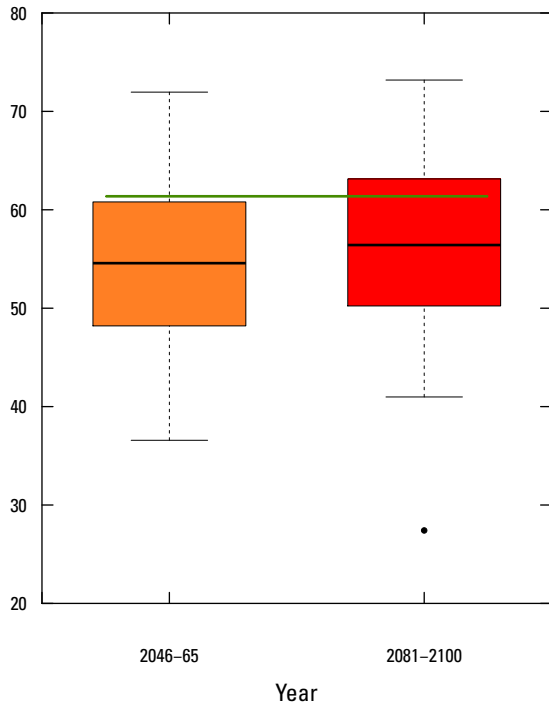
Low streamflow (Q_{90}), in cubic feet per second



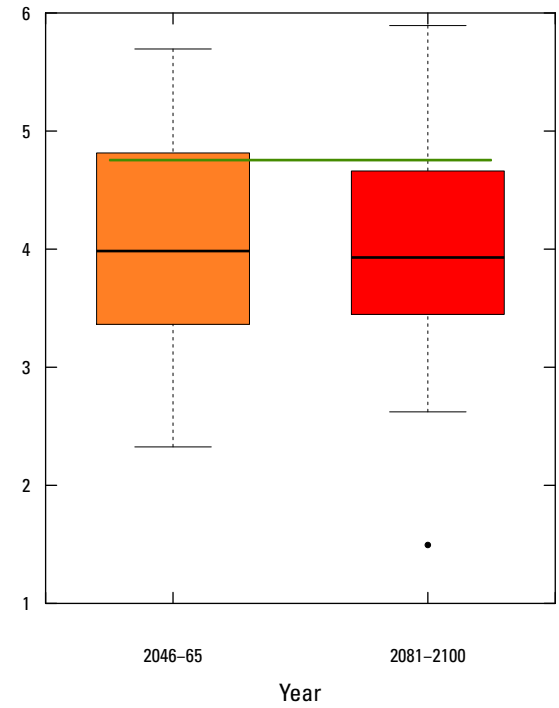
U.S. Geological Survey streamgage station number 04099808, Little Elkhart River at Middlebury, Indiana



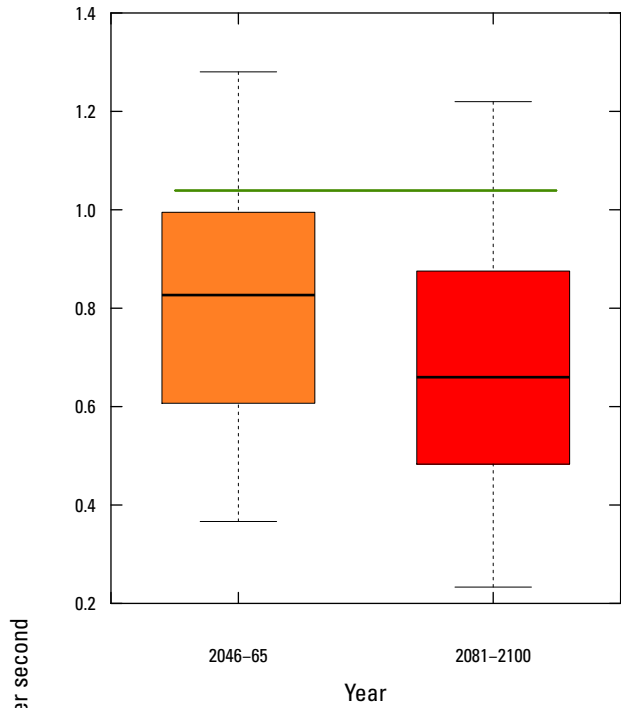
U.S. Geological Survey streamgage station number 04099850, Pine Creek near Elkhart, Indiana



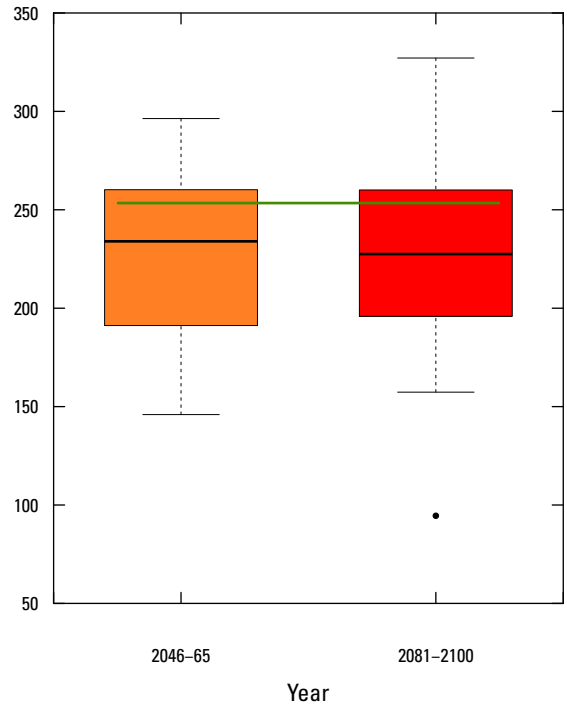
U.S. Geological Survey streamgage station number 04100222, North Branch Elkhart River at Cosperville, Indiana



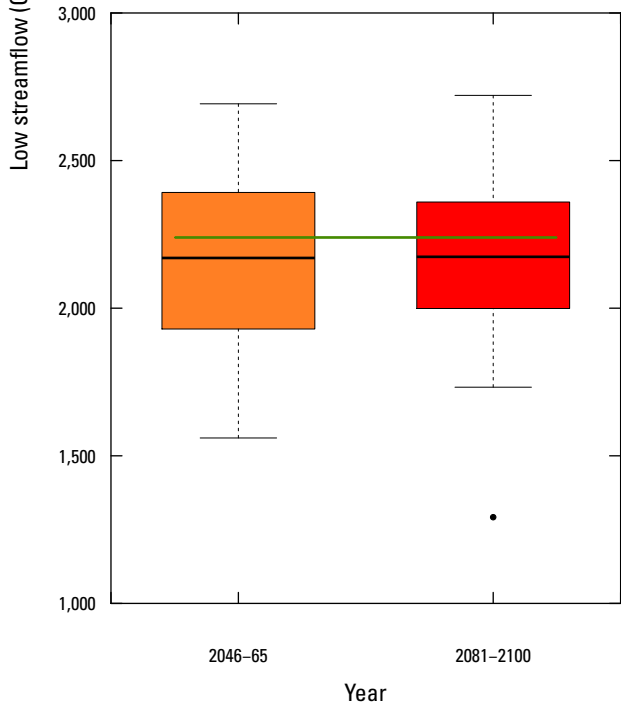
U.S. Geological Survey streamgage station number 04100252, Forker Creek near Burr Oak, Indiana



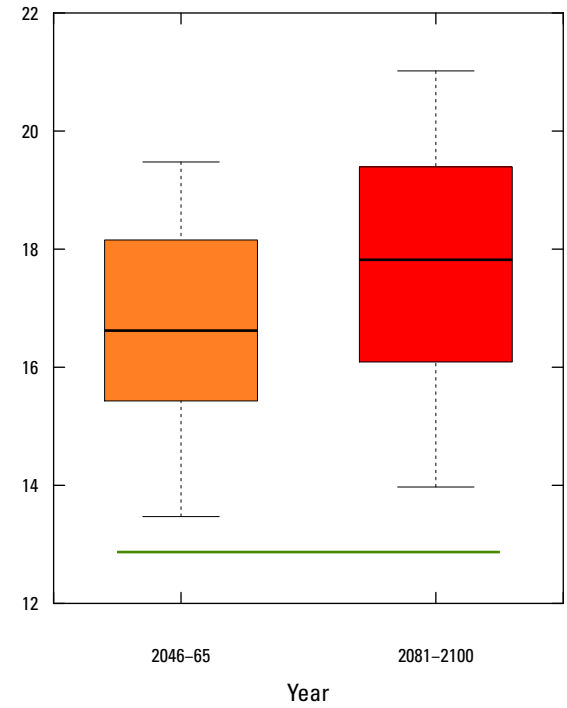
U.S. Geological Survey streamgauge station number 04100295, Rimmell Branch near Albion, Indiana



U.S. Geological Survey streamgauge station number 04100500, Elkhart River at Goshen, Indiana

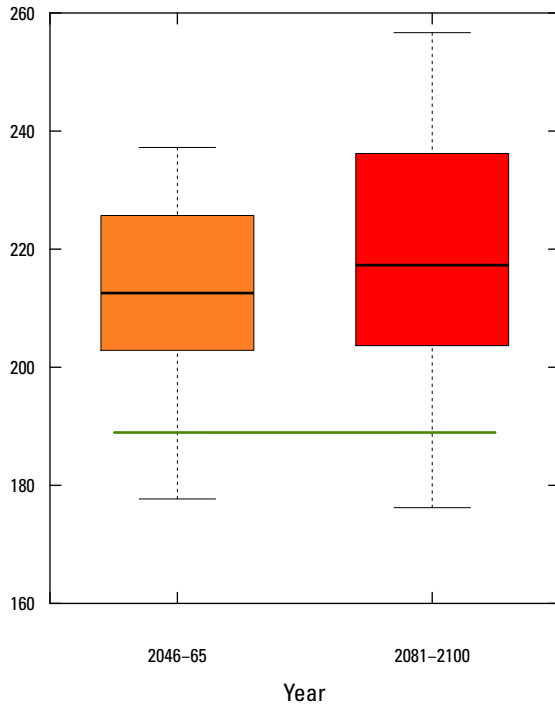


U.S. Geological Survey streamgauge station number 04101000, St. Joseph River at Elkhart, Indiana

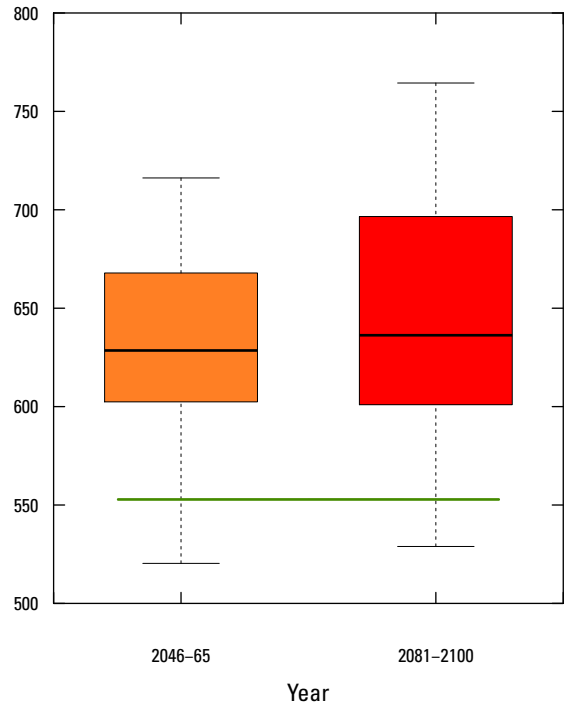


U.S. Geological Survey streamgauge station number 04046000, Black River near Garnet, Michigan

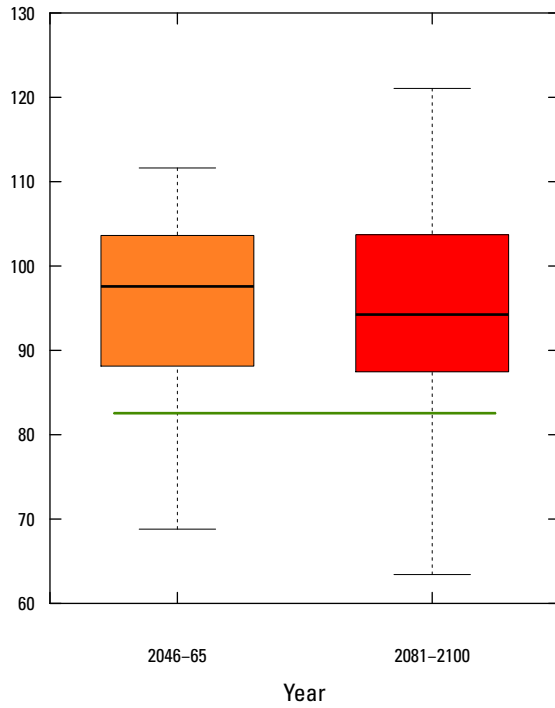
Low streamflow (Q_{90}), in cubic feet per second



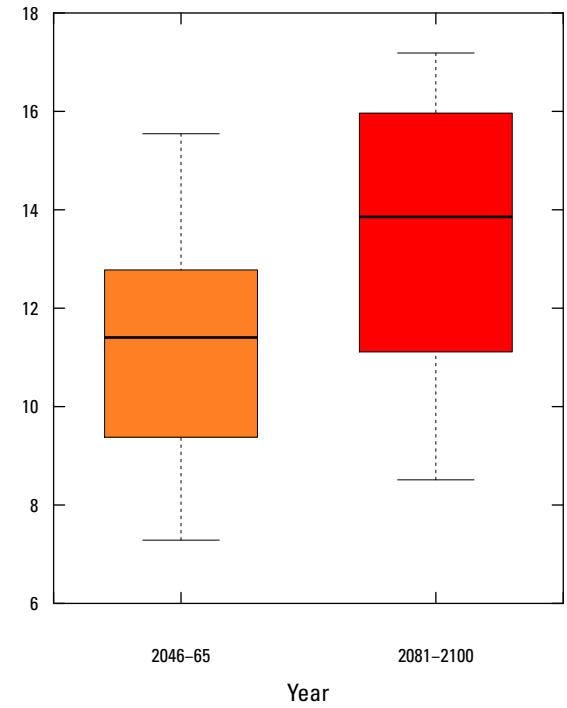
U.S. Geological Survey streamgage station number 04049500, Manistique River at Germfask, Michigan



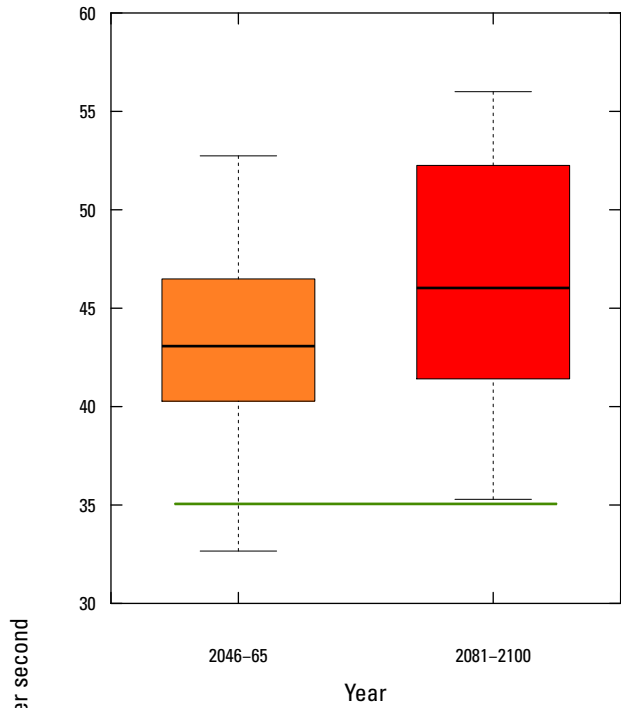
U.S. Geological Survey streamgage station number 04055000, Manistique River at Cookson Bridge near Blaney, Michigan



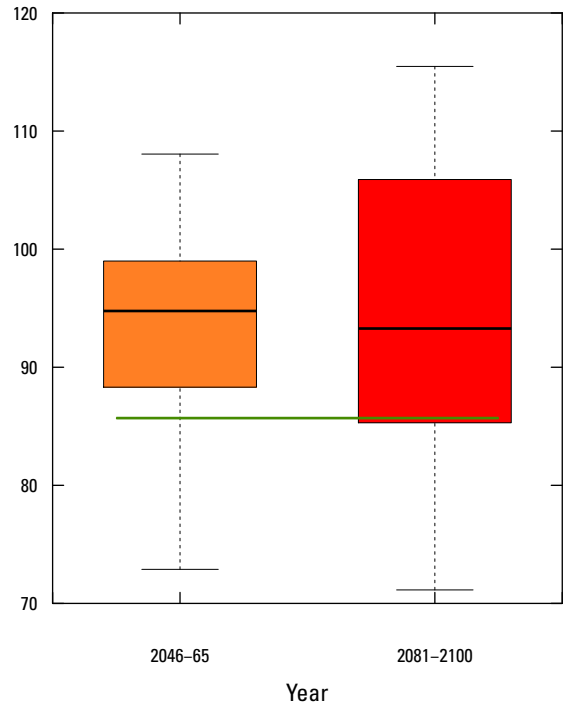
U.S. Geological Survey streamgage station number 04057510, Sturgeon River near Nahma Junction, Michigan



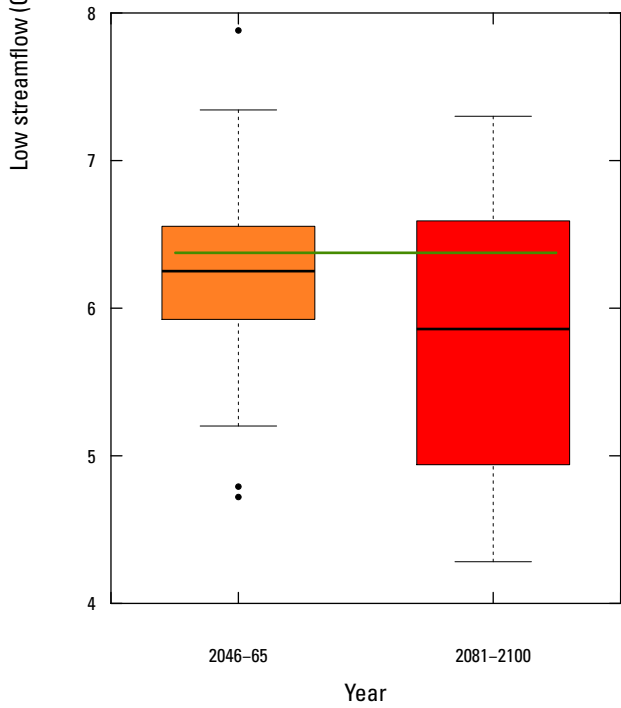
U.S. Geological Survey streamgage station number 04057800, Middle Branch Escanaba River at Humboldt, Michigan



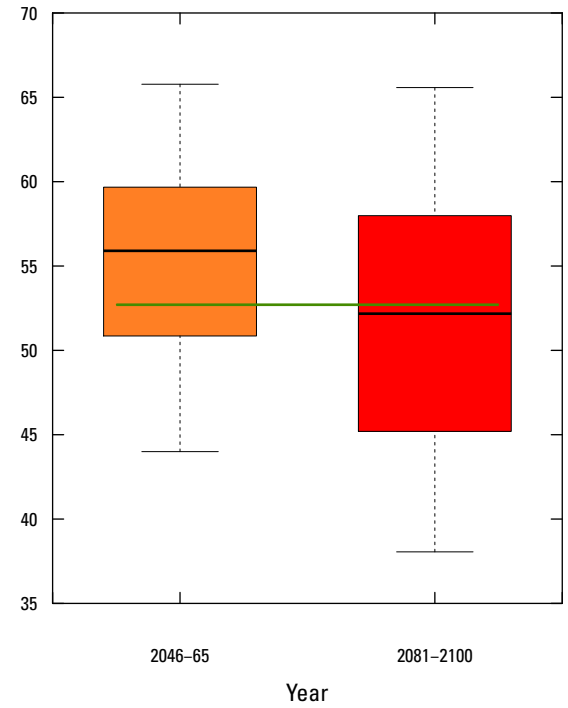
U.S. Geological Survey streamgauge station number 04058000, Middle Branch Escanaba River near Ishpeming, Michigan



U.S. Geological Survey streamgauge station number 04058100, Middle Branch Escanaba River near Princeton, Michigan

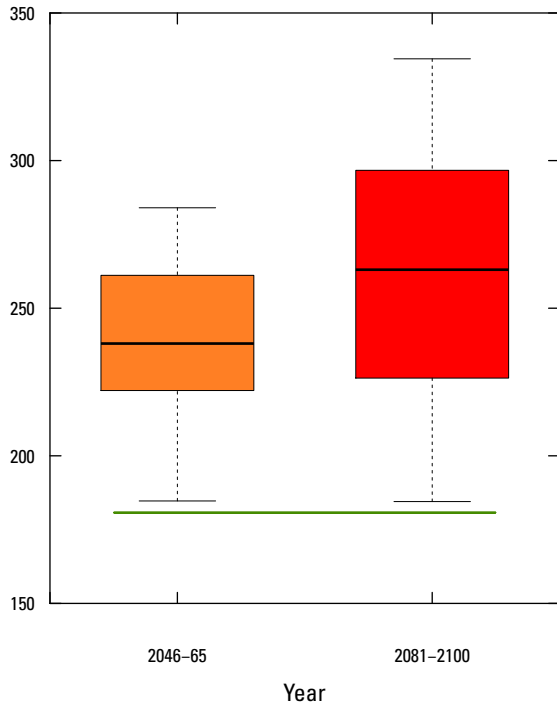


U.S. Geological Survey streamgauge station number 04058200, Schweitzer Creek near Palmer, Michigan

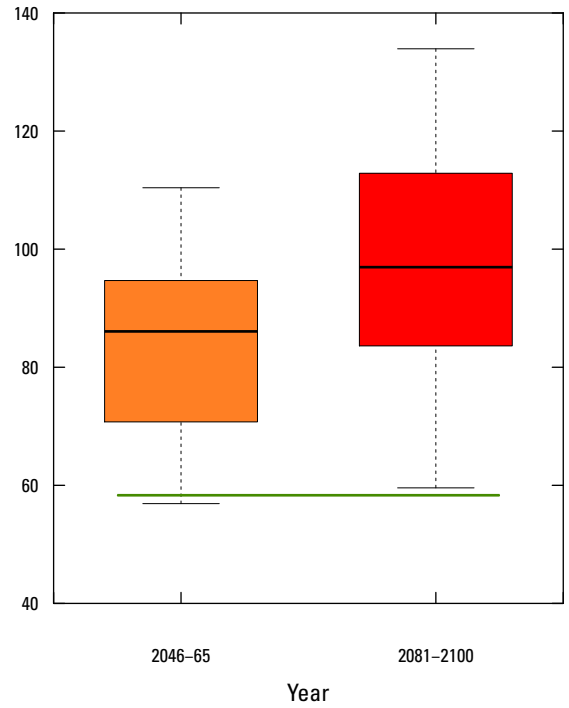


U.S. Geological Survey streamgauge station number 04058500, East Branch Escanaba River at Gwinn, Michigan

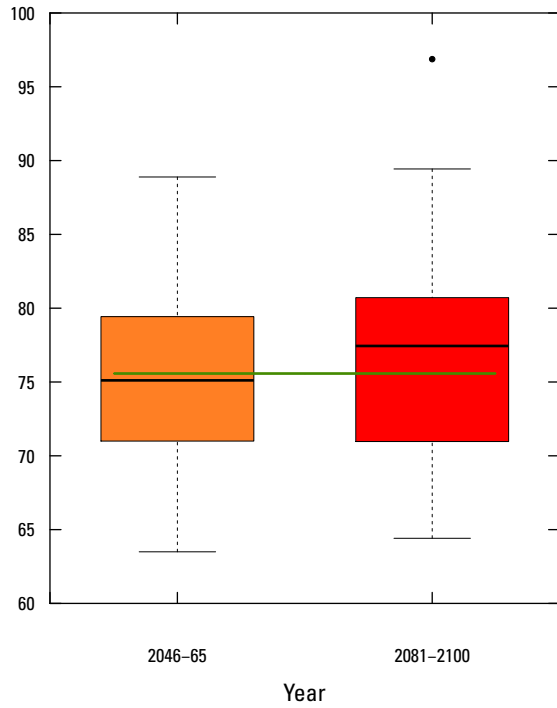
Low streamflow (Q_{90}), in cubic feet per second



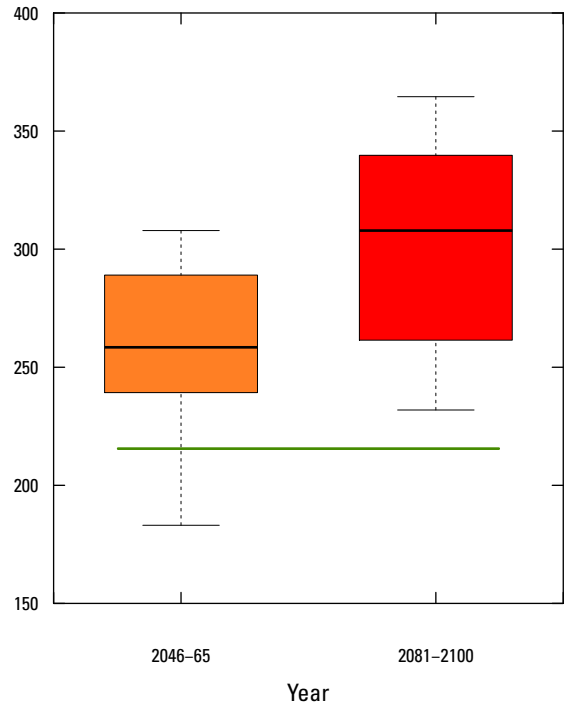
U.S. Geological Survey streamgauge station number 04059000, Escanaba River at Cornell, Michigan



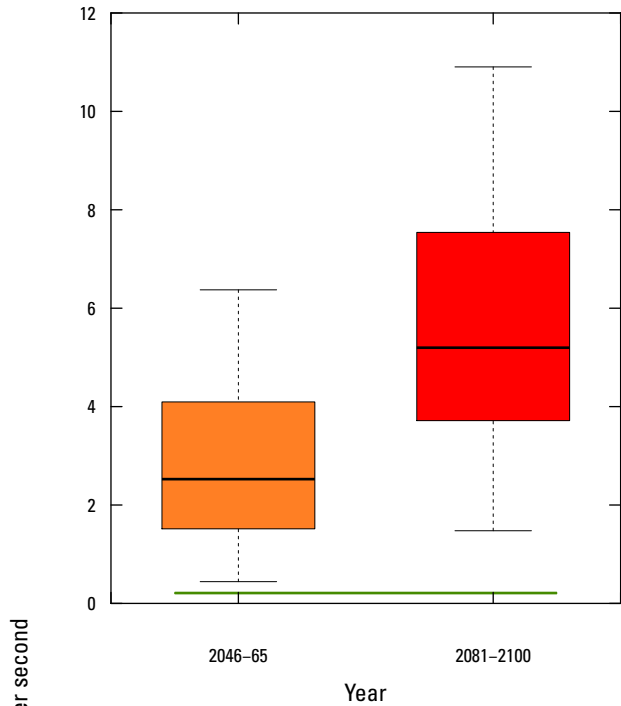
U.S. Geological Survey streamgauge station number 04059500, Ford River near Hyde, Michigan



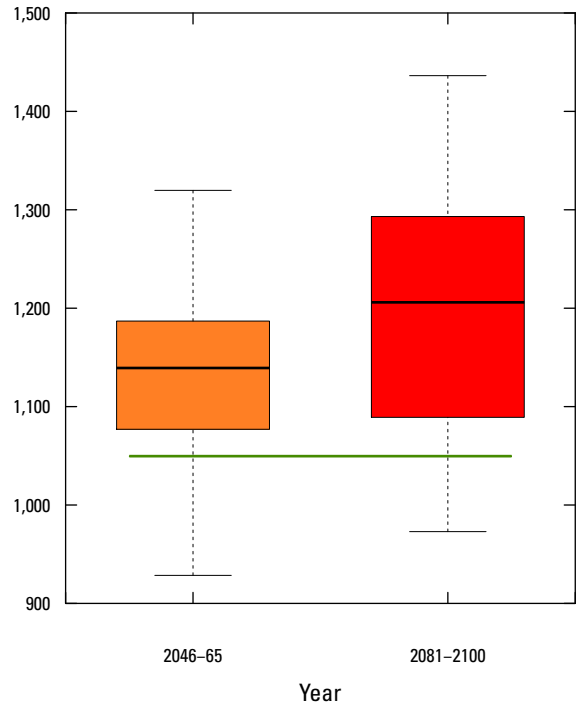
U.S. Geological Survey streamgauge station number 04060500, Iron River at Caspian, Michigan



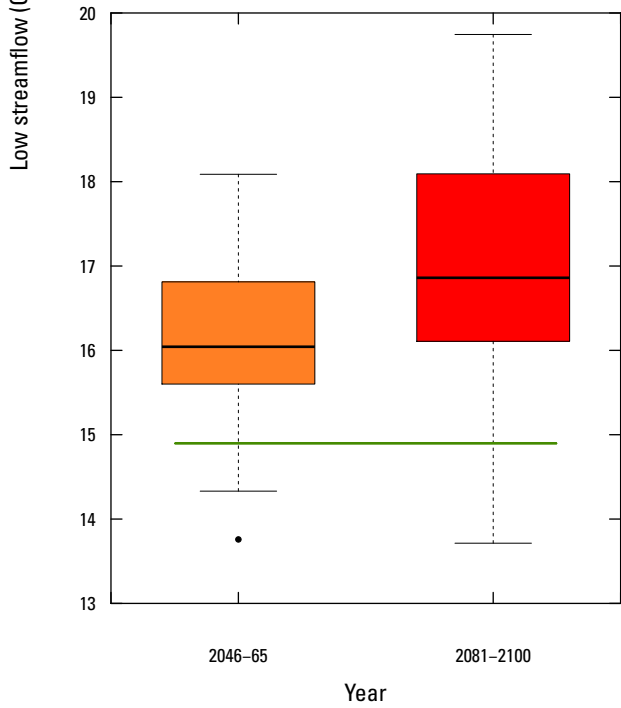
U.S. Geological Survey streamgauge station number 04061500, Paint River at Crystal Falls, Michigan



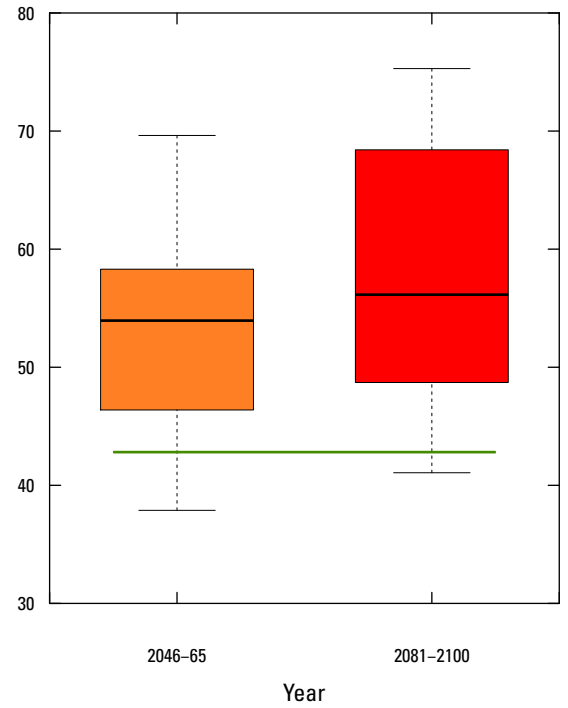
U.S. Geological Survey streamgauge station number 04062200, Peshekee River near Champion, Michigan



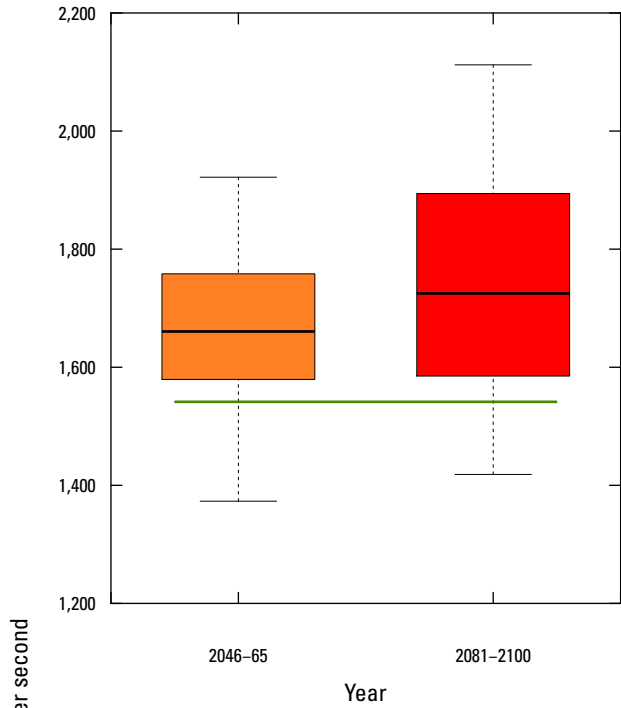
U.S. Geological Survey streamgauge station number 04063500, Menominee River at Twin Falls near Iron Mountain, Michigan



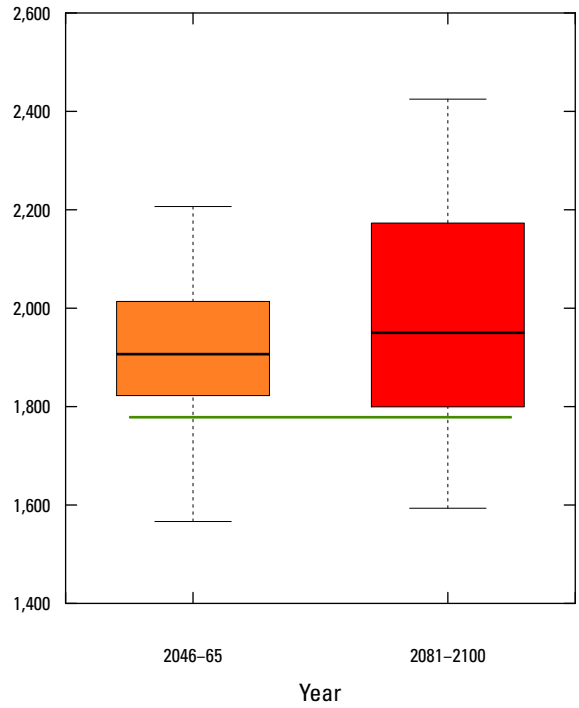
U.S. Geological Survey streamgauge station number 04065300, West Branch Sturgeon River near Randville, Michigan



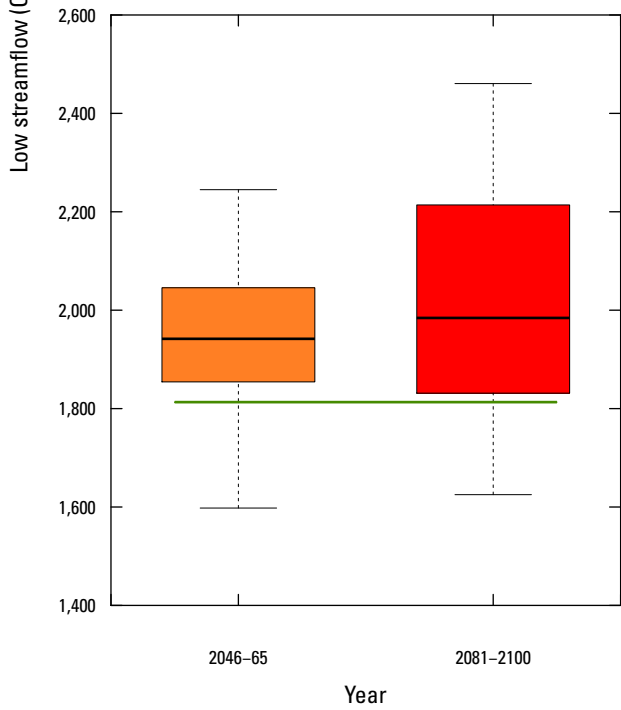
U.S. Geological Survey streamgauge station number 04065500, Sturgeon River near Foster City, Michigan



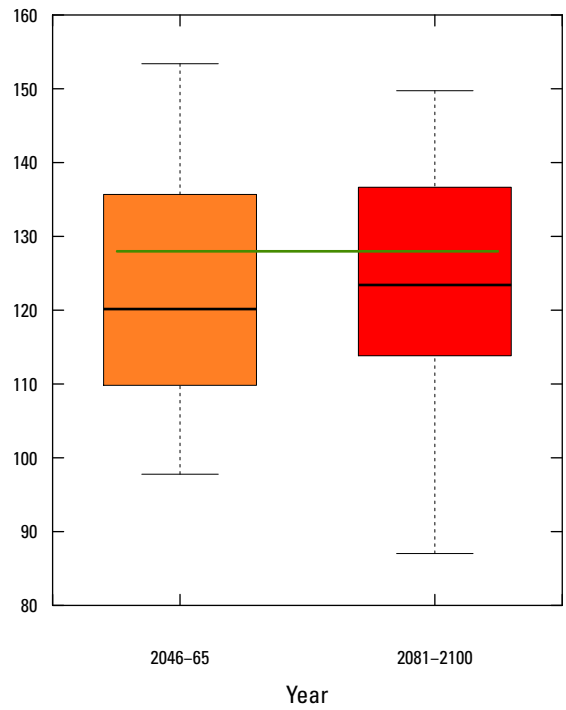
U.S. Geological Survey streamgauge station number 04066030, Menominee River at White Rapids Dam near Banat, Michigan



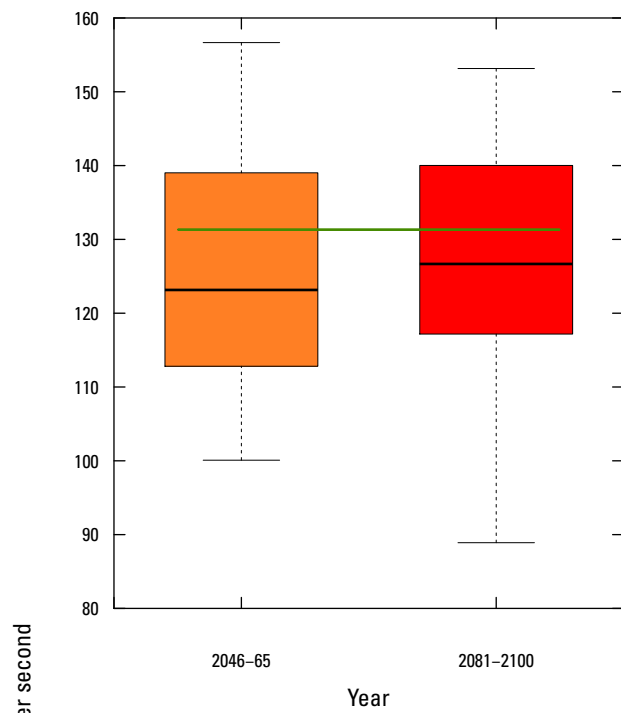
U.S. Geological Survey streamgauge station number 04066800, Menominee River at Koss, Michigan



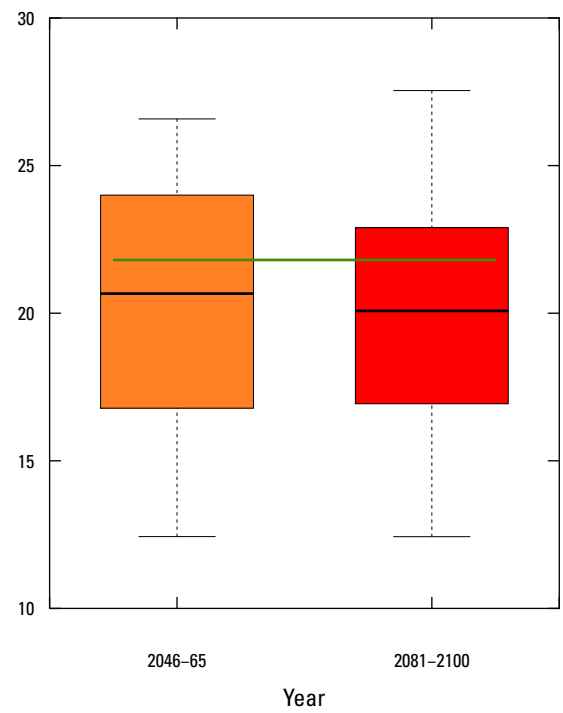
U.S. Geological Survey streamgauge station number 04067000, Menominee River near Koss, Michigan



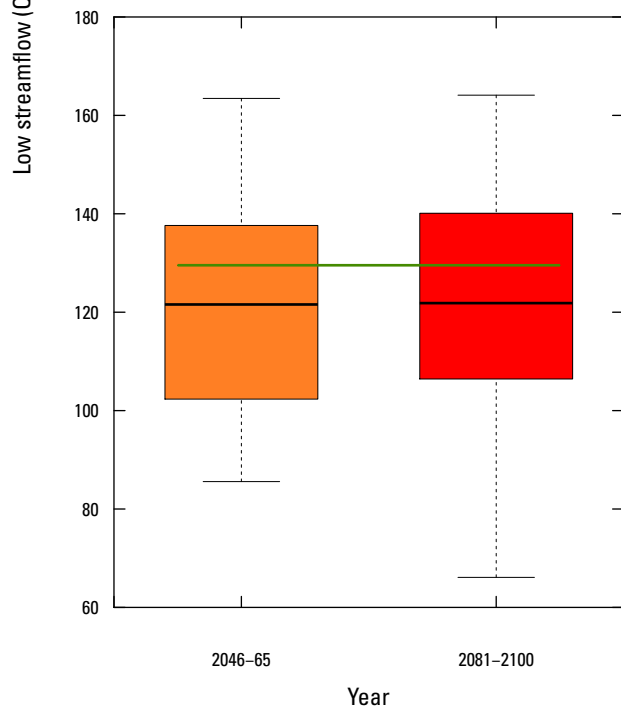
U.S. Geological Survey streamgauge station number 04096400, St. Joseph River near Burlington, Michigan



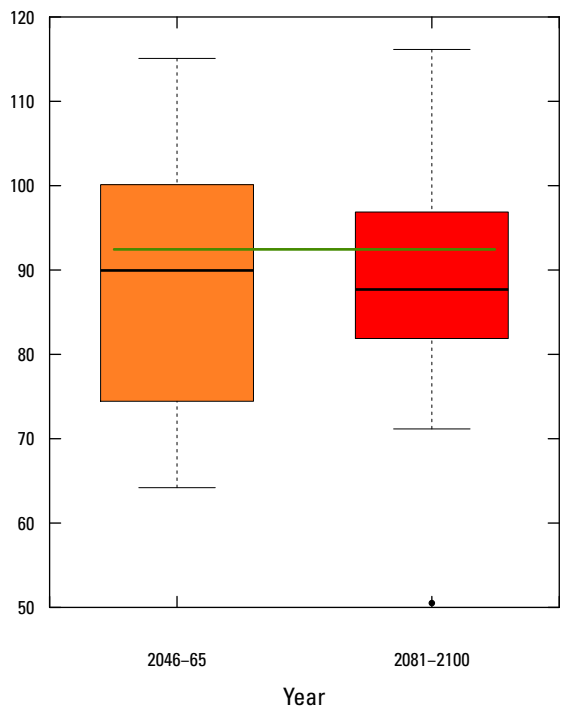
U.S. Geological Survey streamgauge station number 04096405, St. Joseph River at Burlington, Michigan



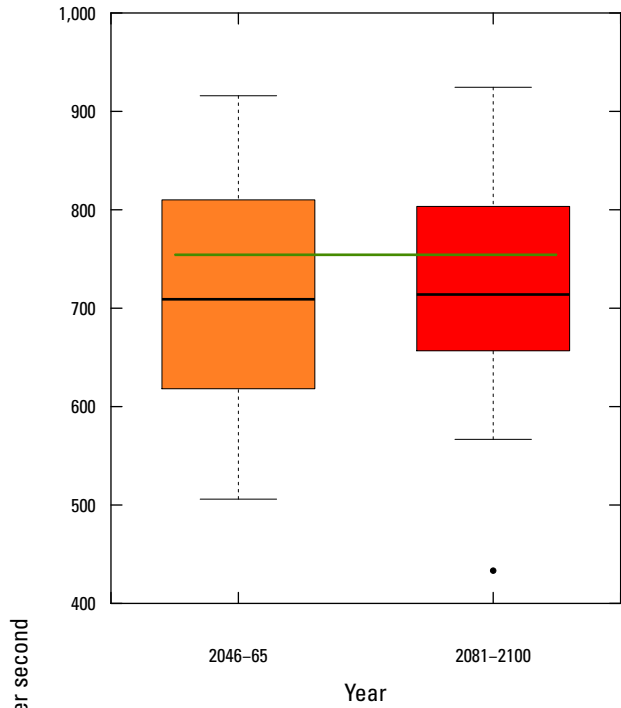
U.S. Geological Survey streamgauge station number 04096515, South Branch Hog Creek near Allen, Michigan



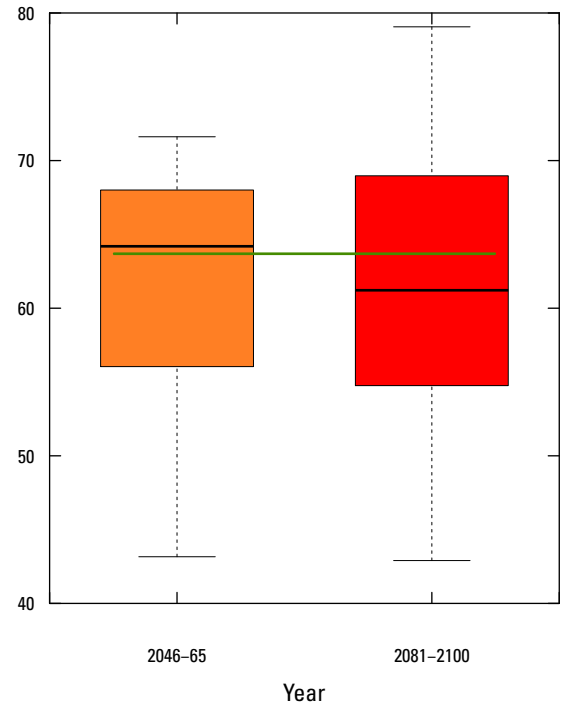
U.S. Geological Survey streamgauge station number 04096600, Coldwater River near Hodunk, Michigan



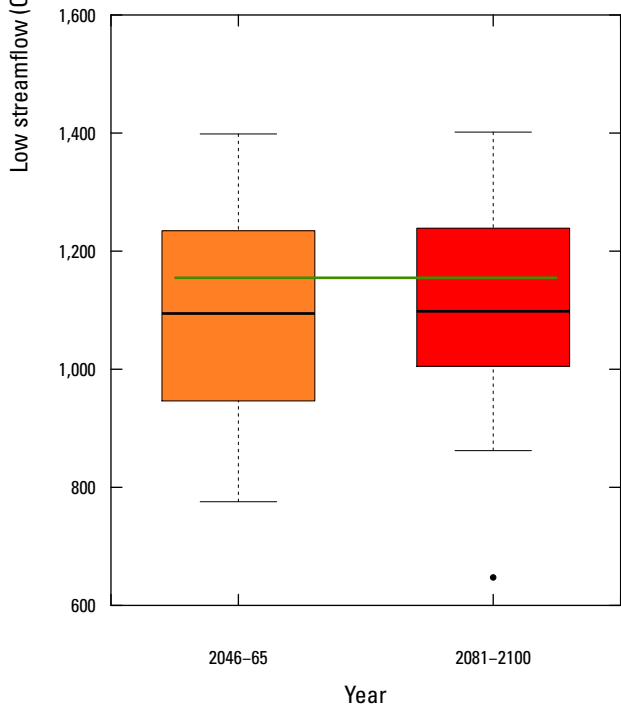
U.S. Geological Survey streamgauge station number 04096900, Nottawa Creek near Athens, Michigan



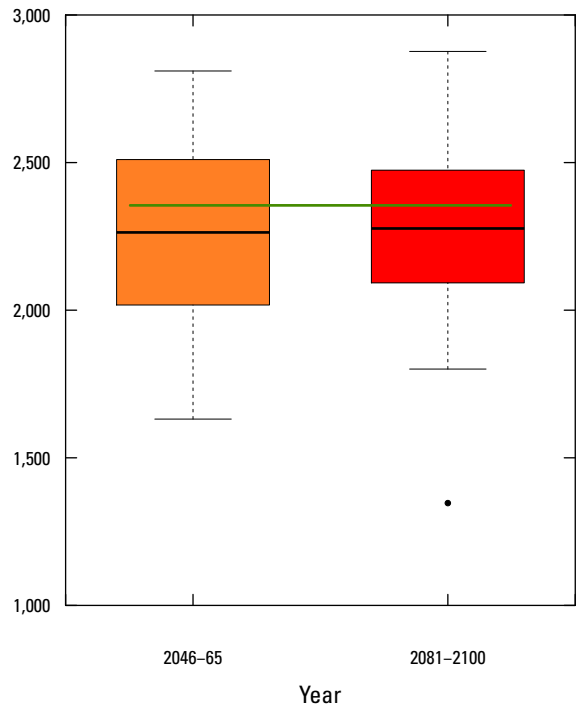
U.S. Geological Survey streamgauge station number 04097500, St. Joseph River at Three Rivers, Michigan



U.S. Geological Survey streamgauge station number 04097540, Prairie River near Nottawa, Michigan

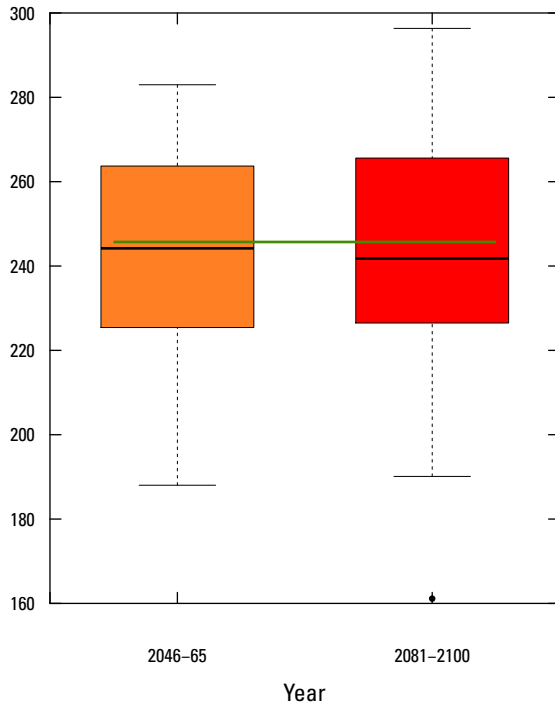


U.S. Geological Survey streamgauge station number 04099000, St. Joseph River at Mottville, Michigan

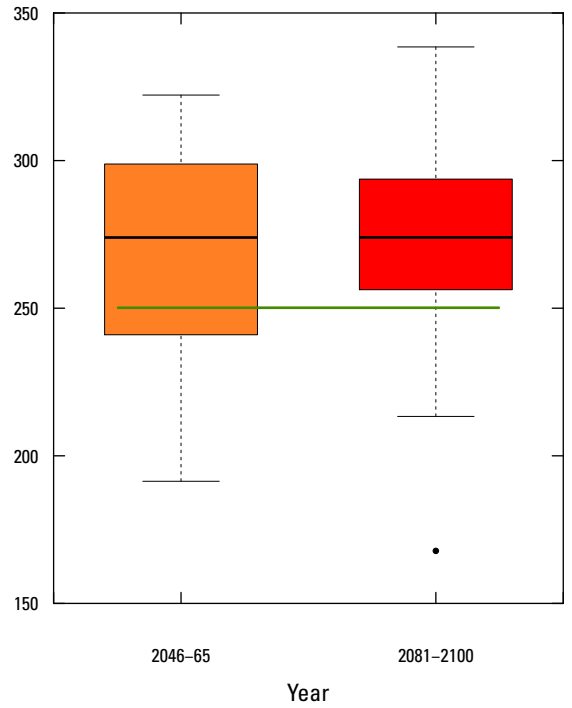


U.S. Geological Survey streamgauge station number 04101500, St. Joseph River at Niles, Michigan

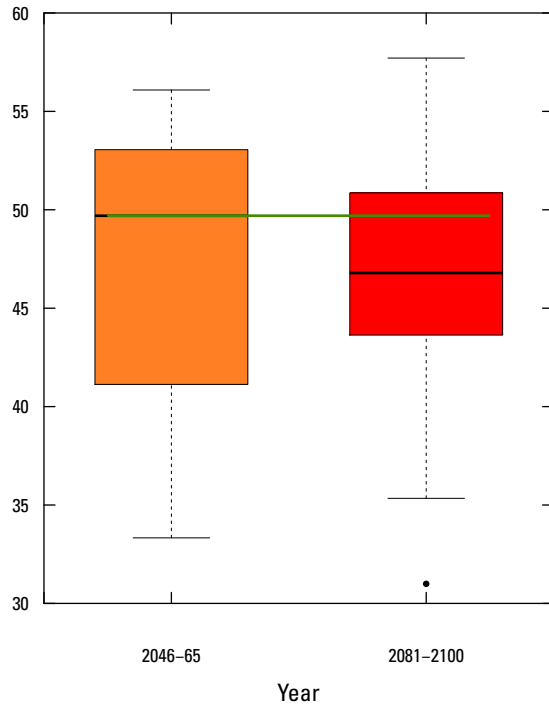
Low streamflow (Q_{90}), in cubic feet per second



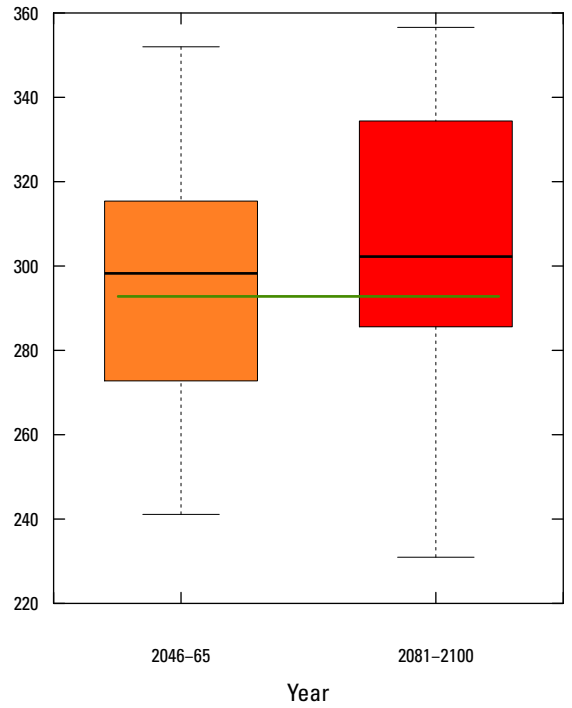
U.S. Geological Survey streamgauge station number 04101800, Dowagiac River at Sumnerville, Michigan



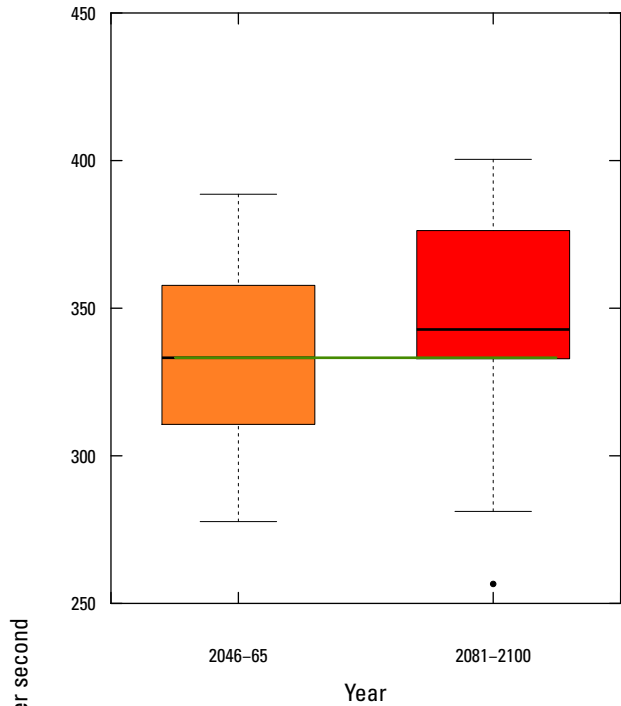
U.S. Geological Survey streamgauge station number 04102500, Paw Paw River at Riverside, Michigan



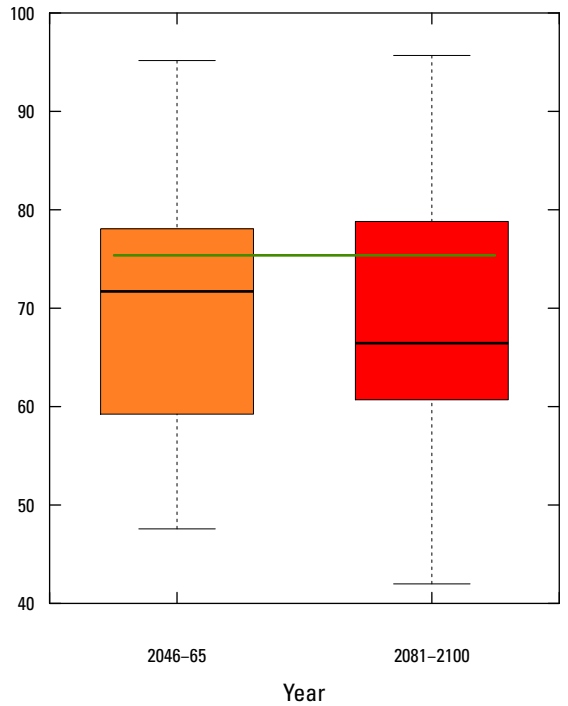
U.S. Geological Survey streamgauge station number 04102700, South Branch Black River near Bangor, Michigan



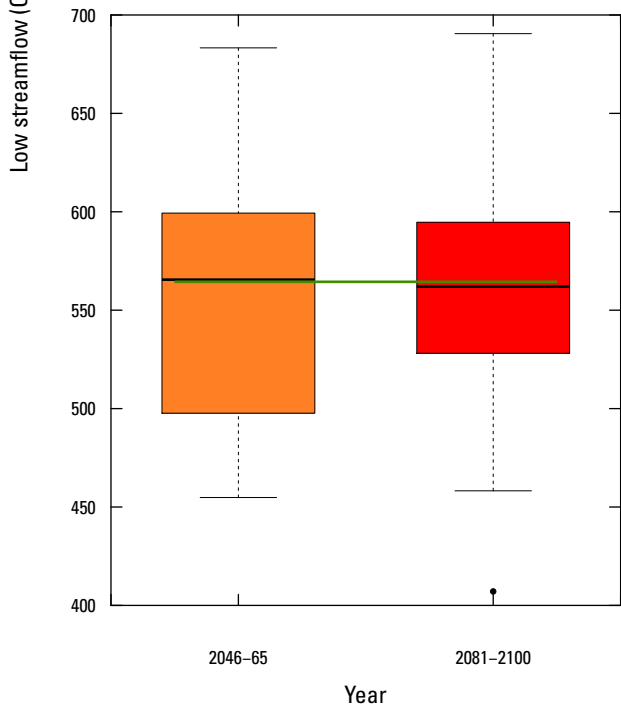
U.S. Geological Survey streamgauge station number 04103010, Kalamazoo River near Marengo, Michigan



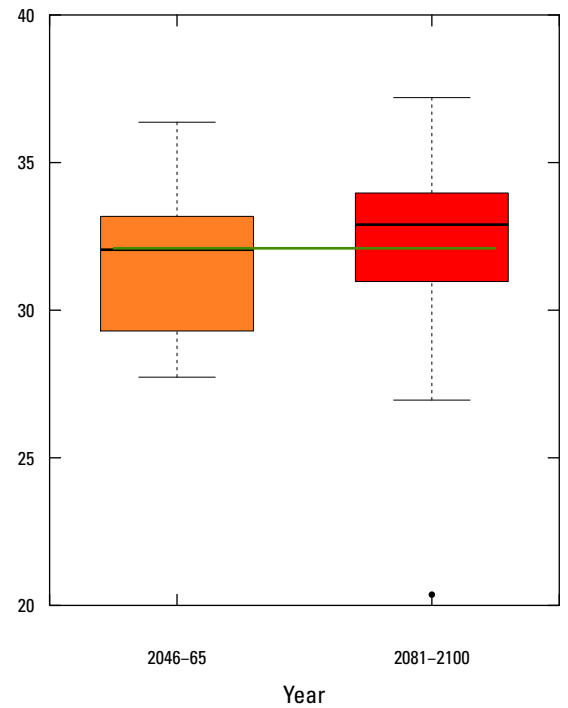
U.S. Geological Survey streamgauge station number 04103500, Kalamazoo River at Marshall, Michigan



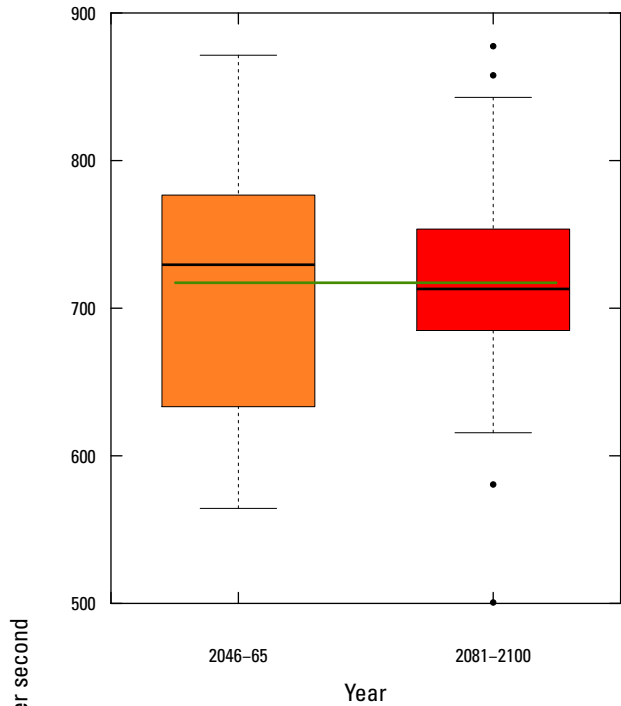
U.S. Geological Survey streamgauge station number 04105000, Battle Creek at Battle Creek, Michigan



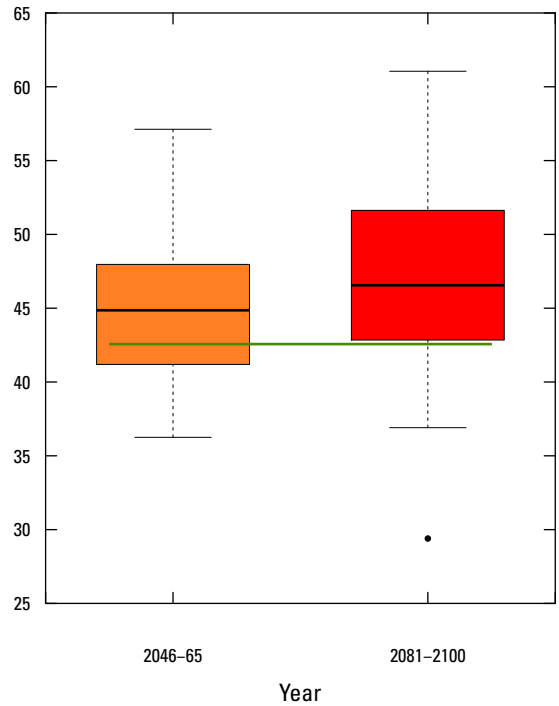
U.S. Geological Survey streamgauge station number 04105500, Kalamazoo River near Battle Creek, Michigan



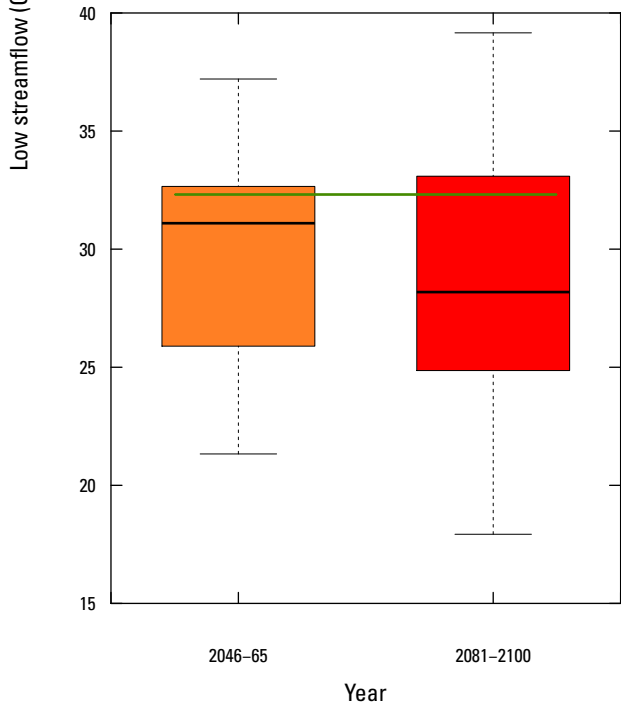
U.S. Geological Survey streamgauge station number 04105700, Augusta Creek near Augusta, Michigan



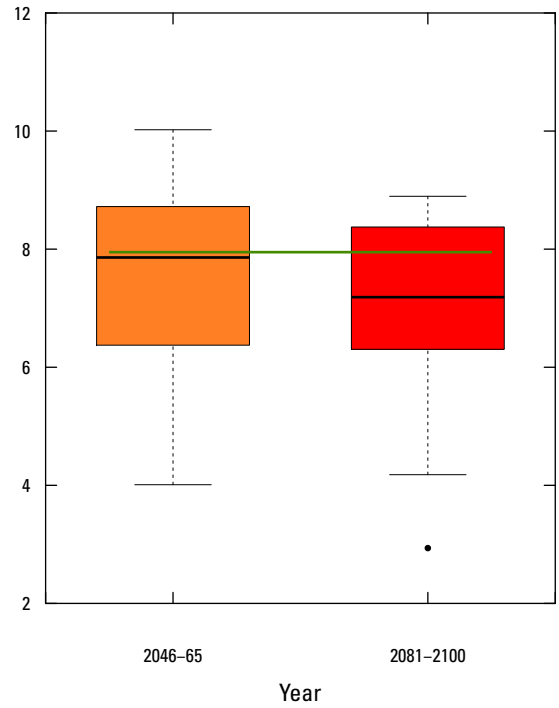
U.S. Geological Survey streamgage station number 04106000, Kalamazoo River at Comstock, Michigan



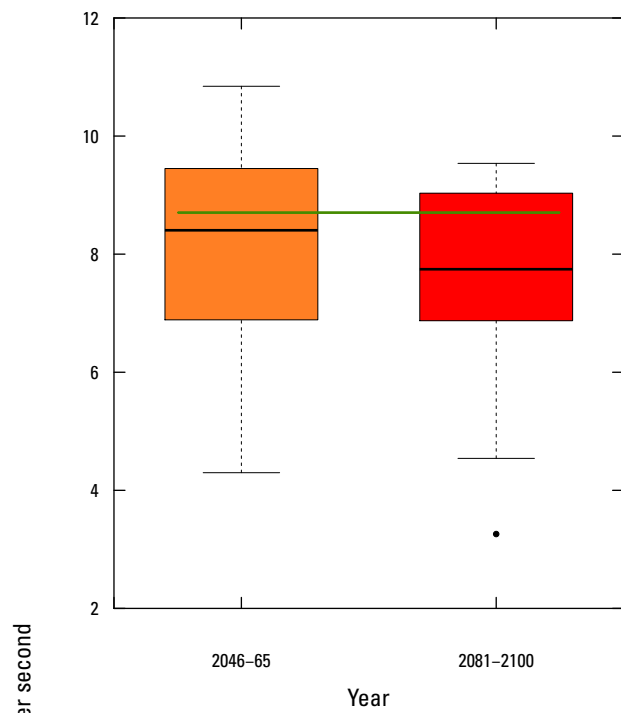
U.S. Geological Survey streamgage station number 04106500, Portage Creek at Kalamazoo, Michigan



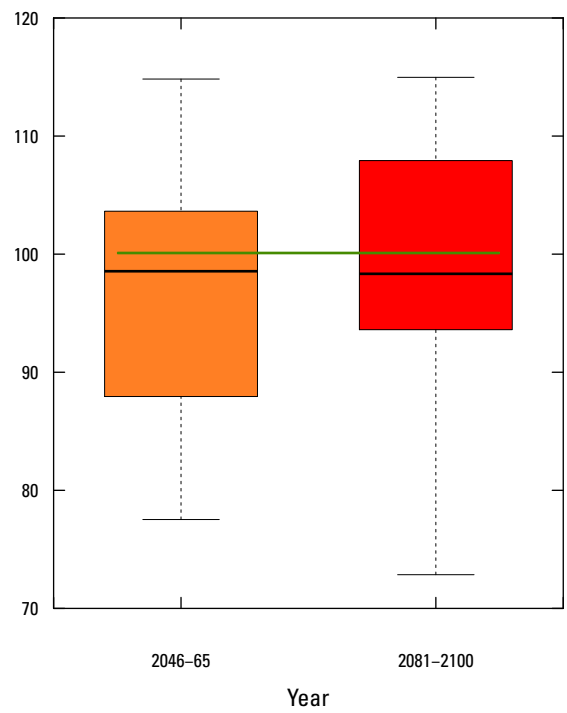
U.S. Geological Survey streamgage station number 04108600, Rabbit River near Hopkins, Michigan



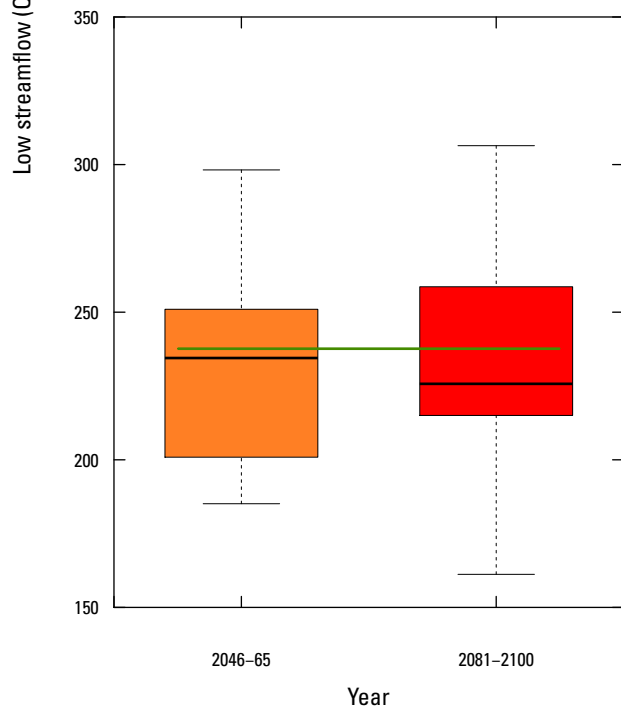
U.S. Geological Survey streamgage station number 04108800, Macatawa River at State Road near Zeeland, Michigan



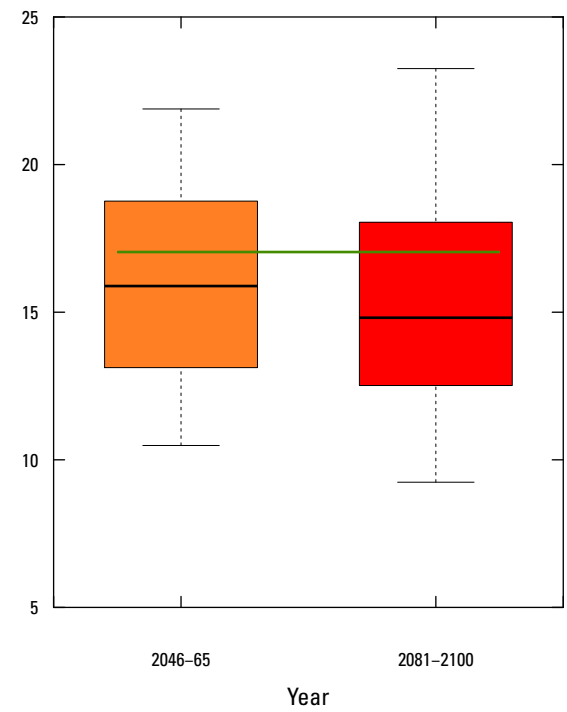
U.S. Geological Survey streamgauge station number 04108801, Macatawa River near Zeeland, Michigan



U.S. Geological Survey streamgauge station number 04109000, Grand River at Jackson, Michigan

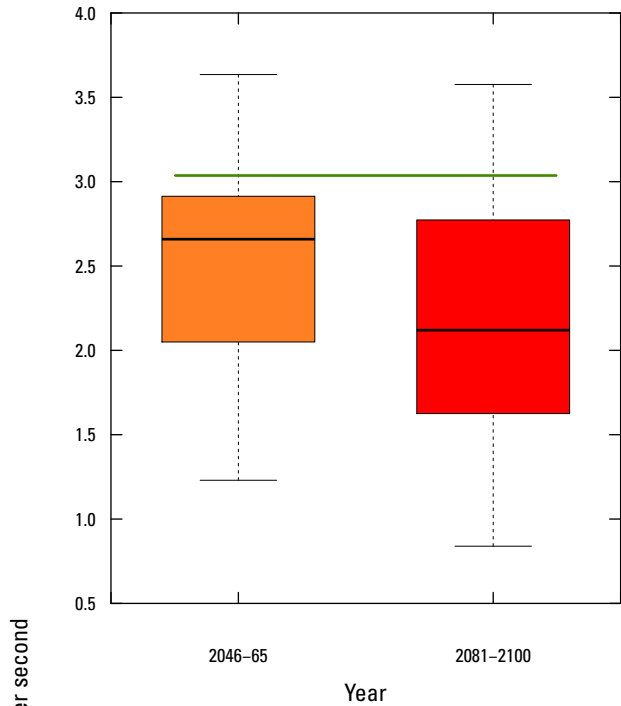


U.S. Geological Survey streamgauge station number 04111000, Grand River near Eaton Rapids, Michigan

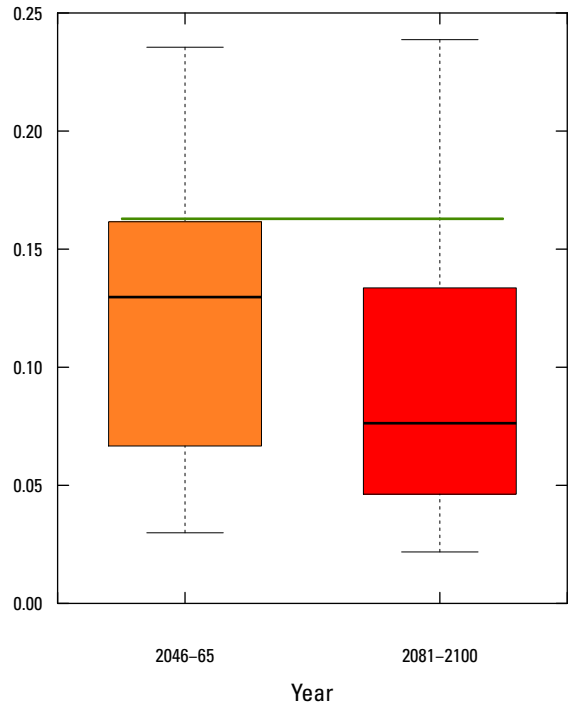


U.S. Geological Survey streamgauge station number 04111379, Red Cedar River near Williamston, Michigan

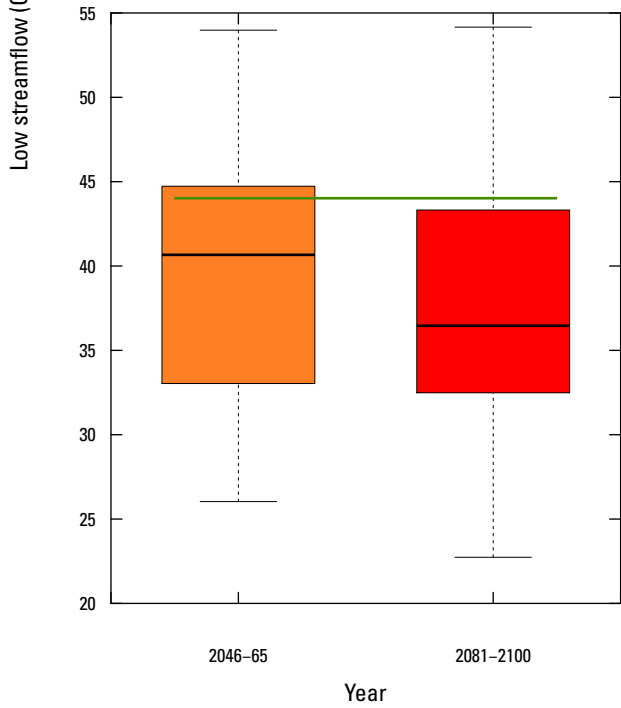
Low streamflow (Q_{90}), in cubic feet per second



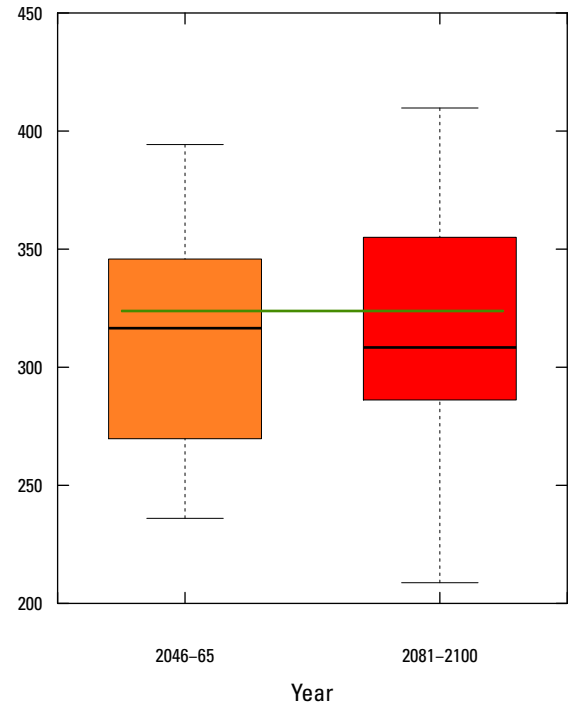
U.S. Geological Survey streamgauge station number 04111500, Deer Creek near Dansville, Michigan



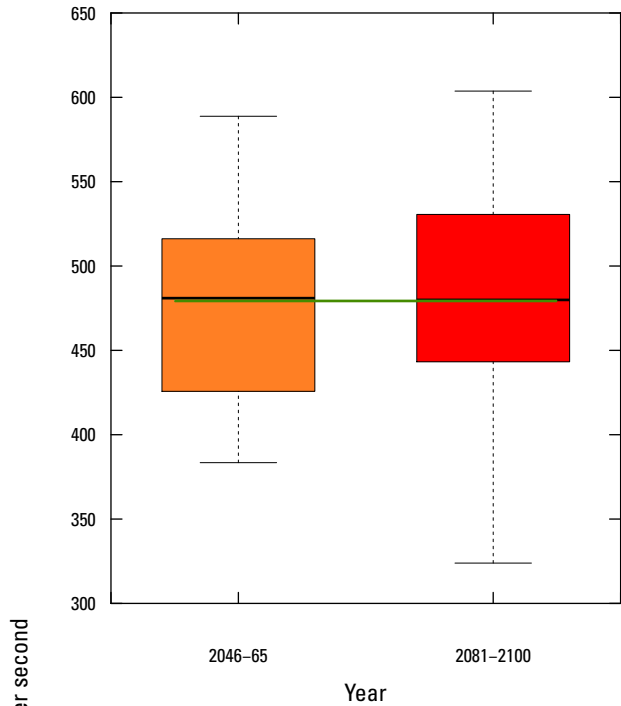
U.S. Geological Survey streamgauge station number 04112000, Sloan Creek near Williamston, Michigan



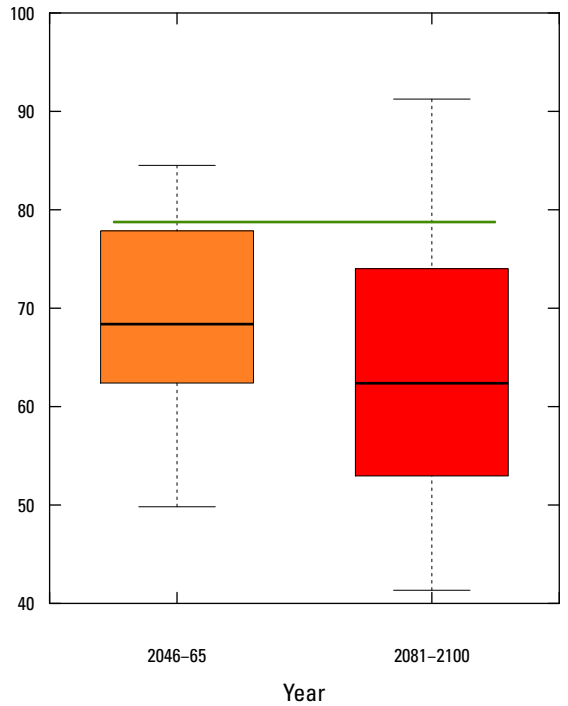
U.S. Geological Survey streamgauge station number 04112500, Red Cedar River at East Lansing, Michigan



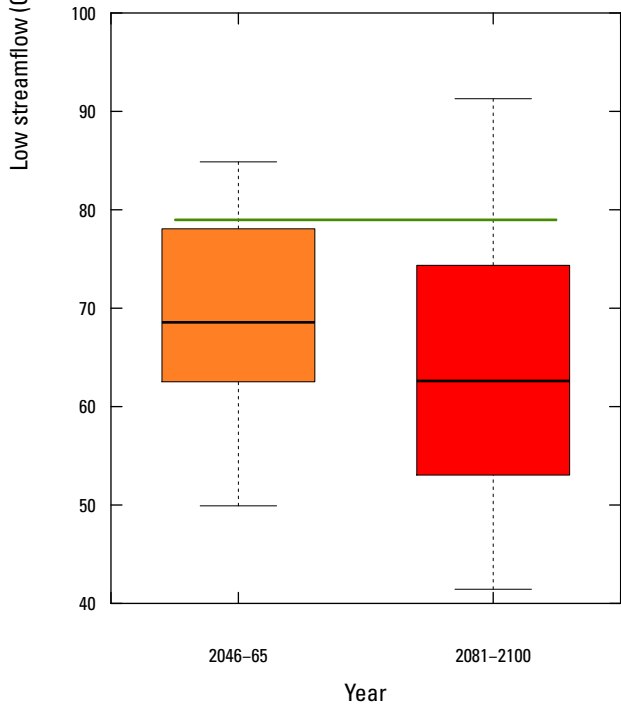
U.S. Geological Survey streamgauge station number 04113000, Grand River at Lansing, Michigan



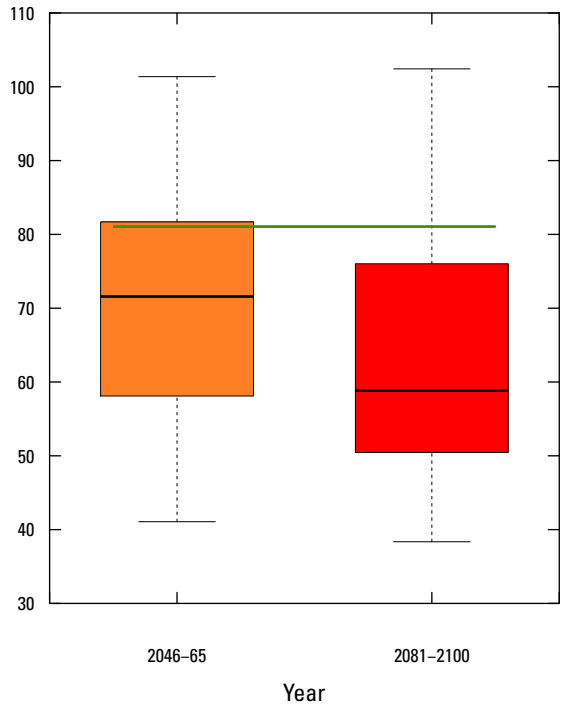
U.S. Geological Survey streamgage station number 04114000, Grand River at Portland, Michigan



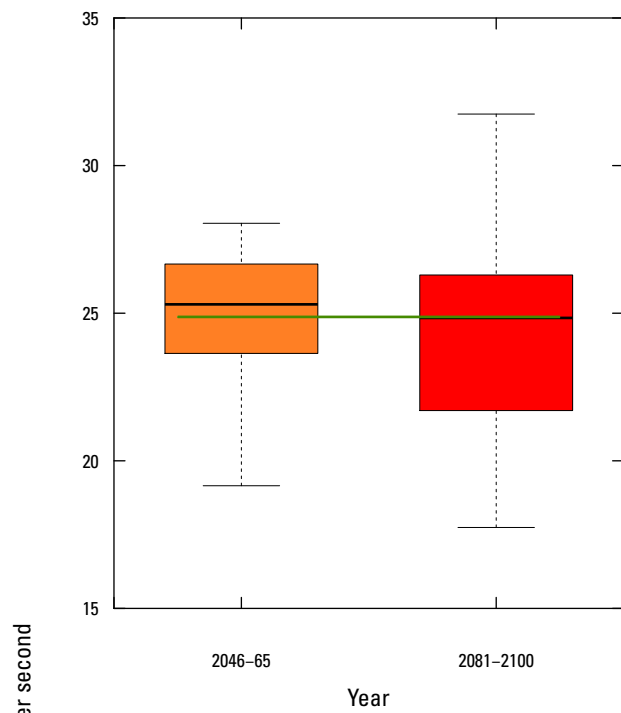
U.S. Geological Survey streamgage station number 04114498, Looking Glass River near Eagle, Michigan



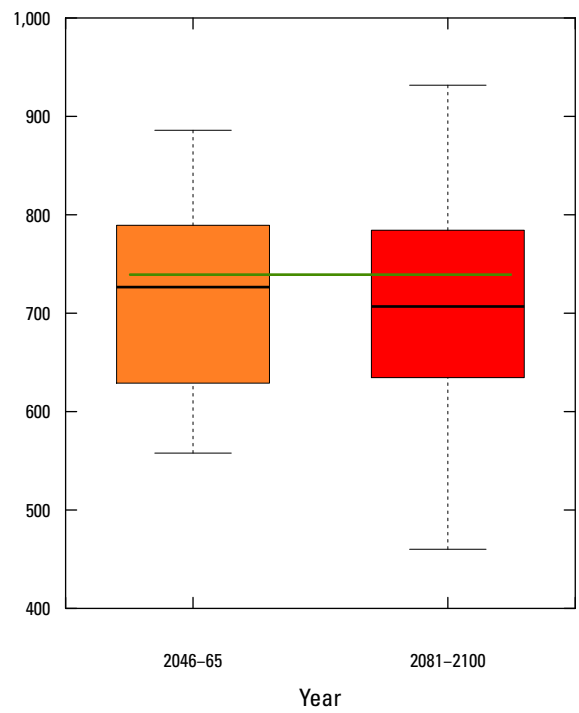
U.S. Geological Survey streamgage station number 04114500, Looking Glass River at Hinman Road near Eagle, Michigan



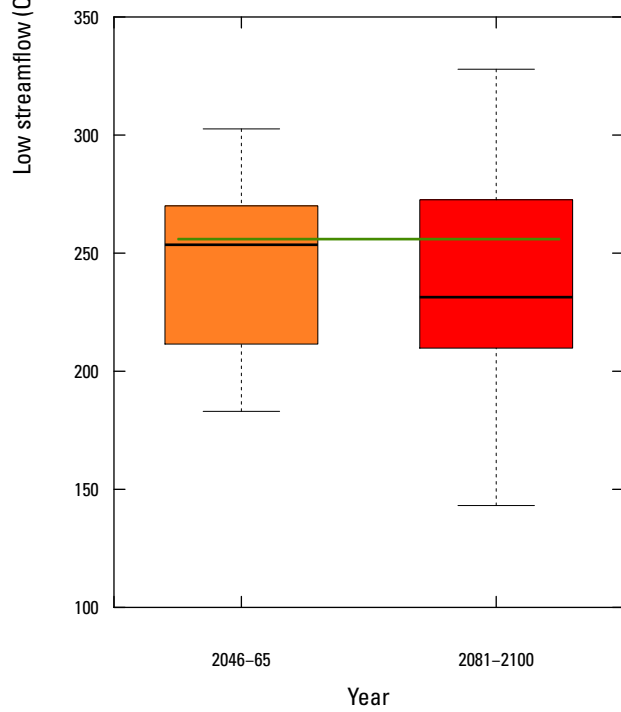
U.S. Geological Survey streamgage station number 04115000, Maple River at Maple Rapids, Michigan



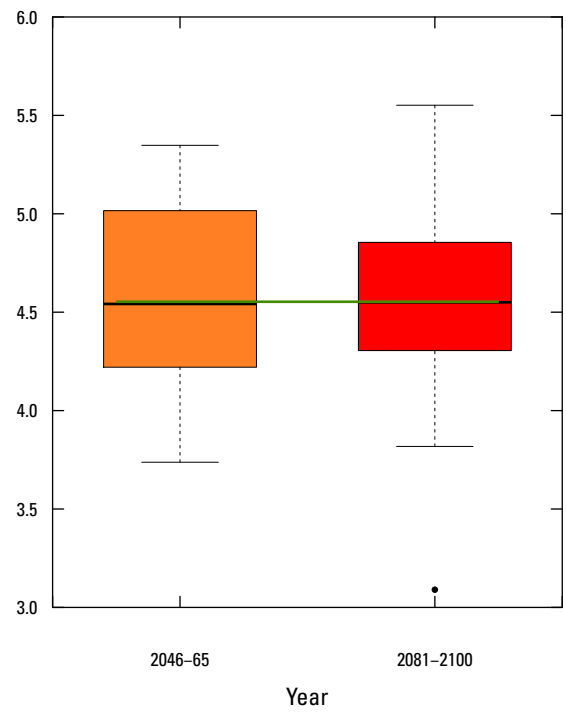
U.S. Geological Survey streamgage station number 04115265, Fish Creek near Crystal, Michigan



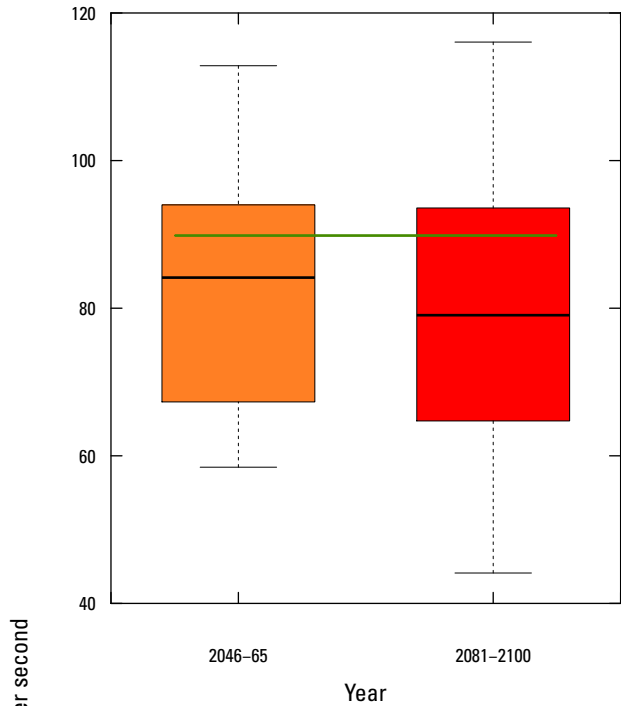
U.S. Geological Survey streamgage station number 04116000, Grand River at Ionia, Michigan



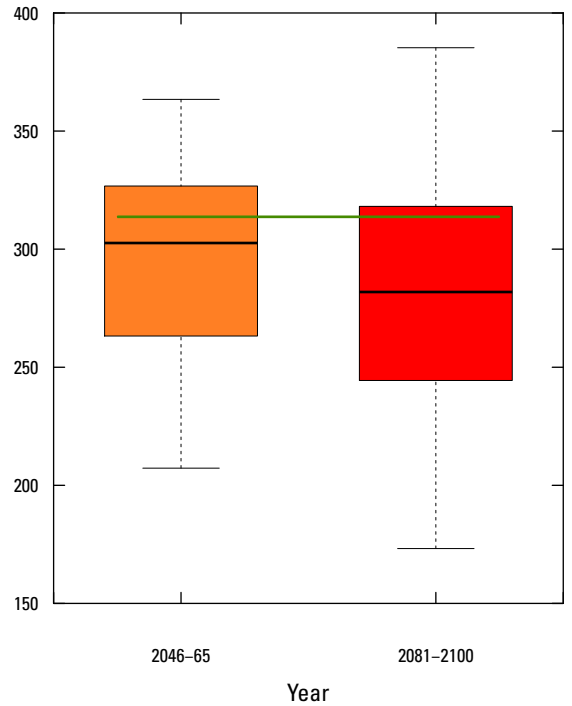
U.S. Geological Survey streamgage station number 04116500, Flat River at Smyrna, Michigan



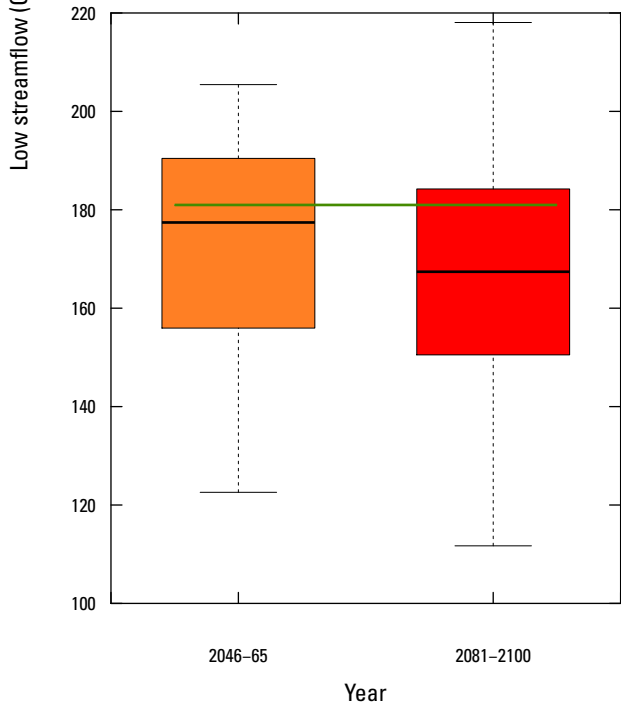
U.S. Geological Survey streamgage station number 04117000, Quaker Brook near Nashville, Michigan



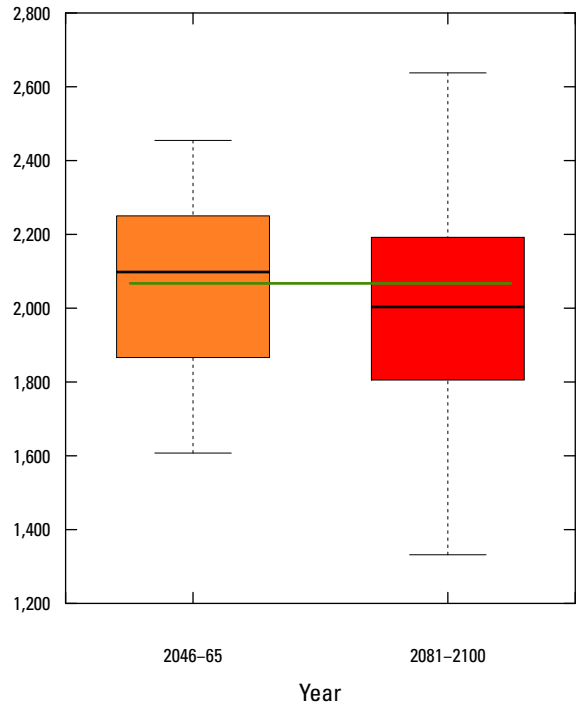
U.S. Geological Survey streamgauge station number 04117500, Thornapple River near Hastings, Michigan



U.S. Geological Survey streamgauge station number 04118000, Thornapple River near Caledonia, Michigan

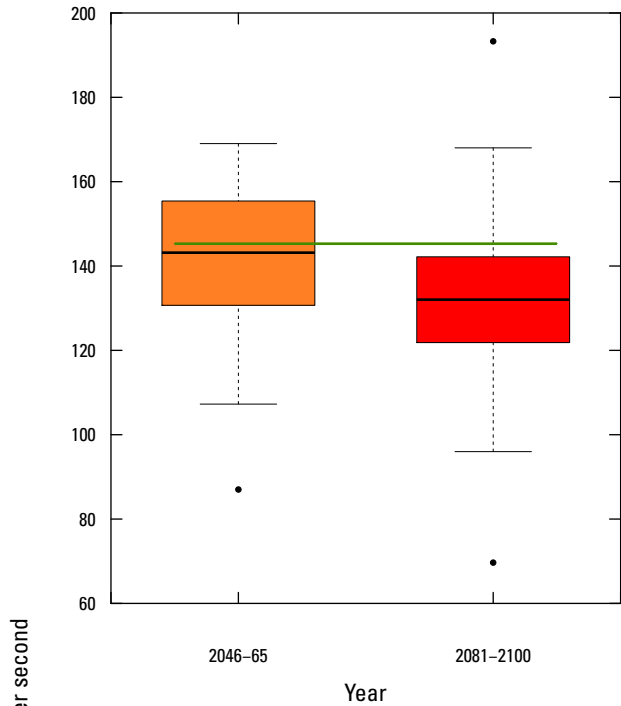


U.S. Geological Survey streamgauge station number 04118500, Rogue River near Rockford, Michigan

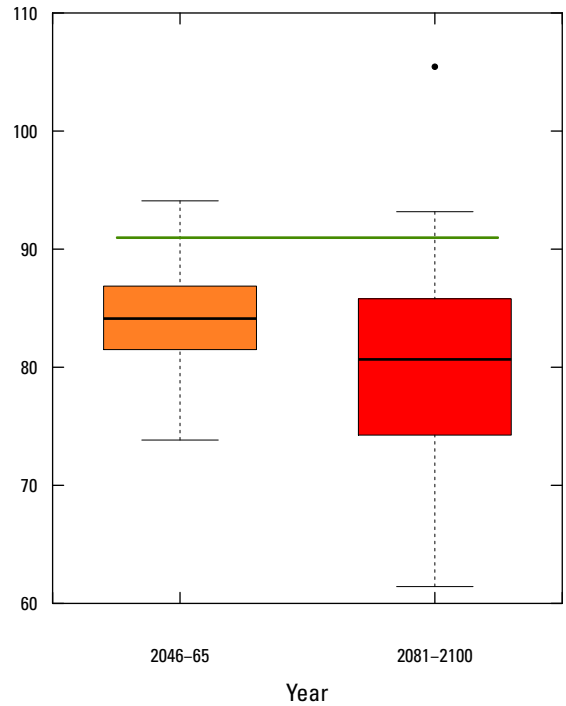


U.S. Geological Survey streamgauge station number 04119000, Grand River at Grand Rapids, Michigan

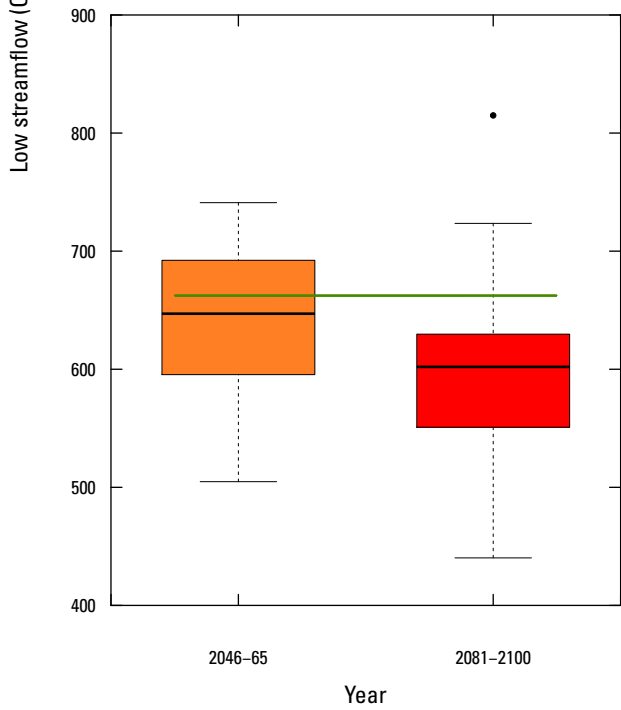
Low streamflow (Q_{90}), in cubic feet per second



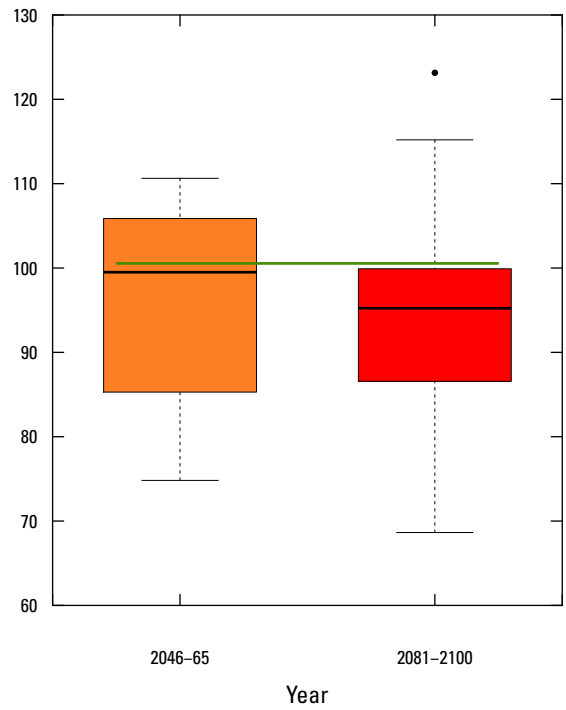
U.S. Geological Survey streamgauge station number 04121000, Muskegon River near Merritt, Michigan



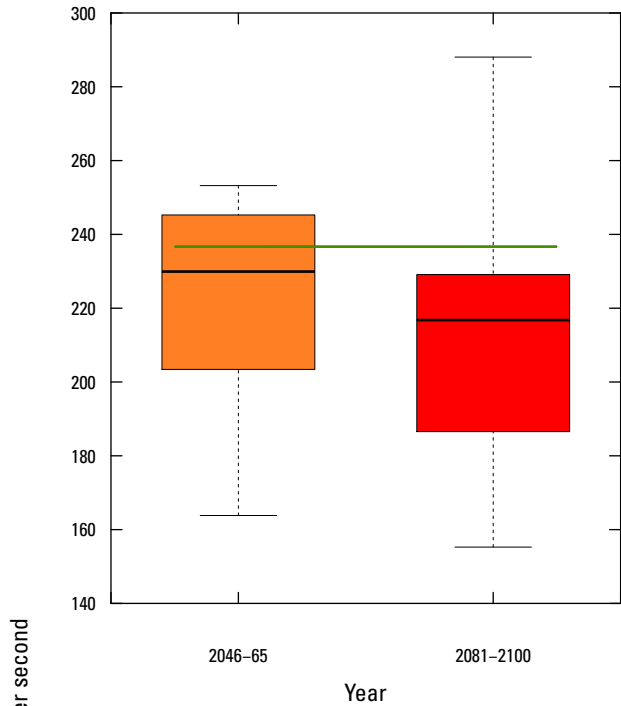
U.S. Geological Survey streamgauge station number 04121300, Clam River at Vogel Center, Michigan



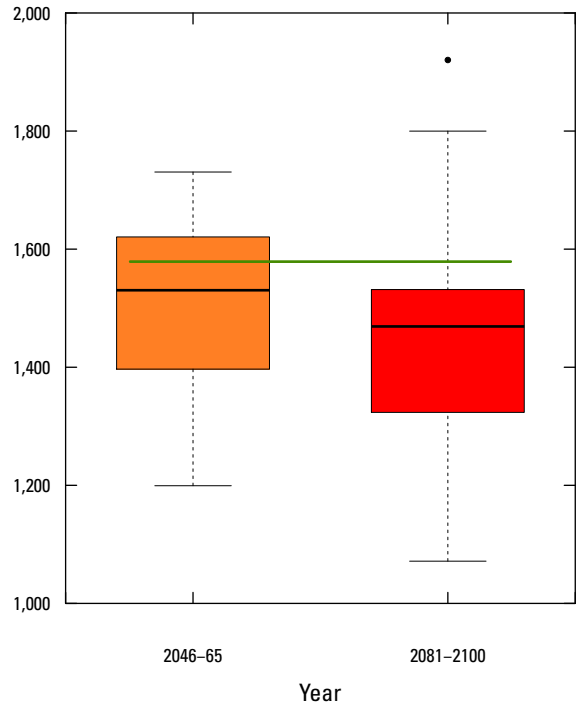
U.S. Geological Survey streamgauge station number 04121500, Muskegon River at Evert, Michigan



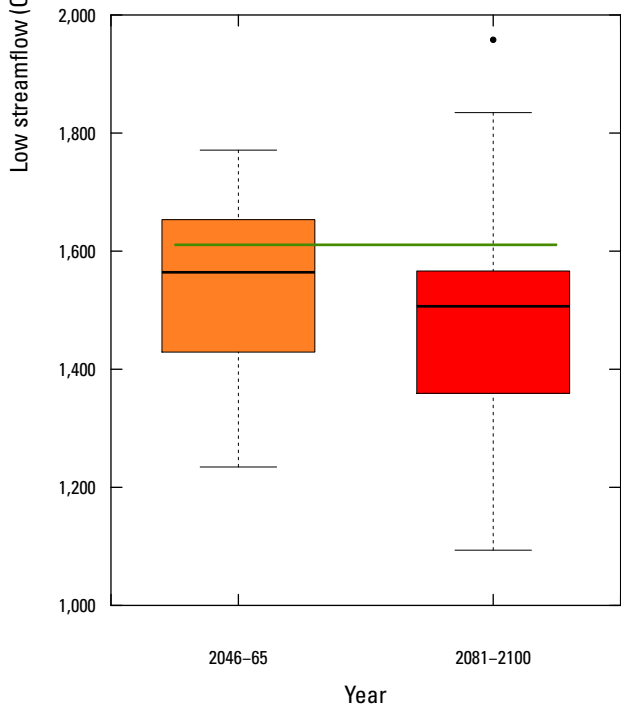
U.S. Geological Survey streamgauge station number 04121900, Little Muskegon River near Morley, Michigan



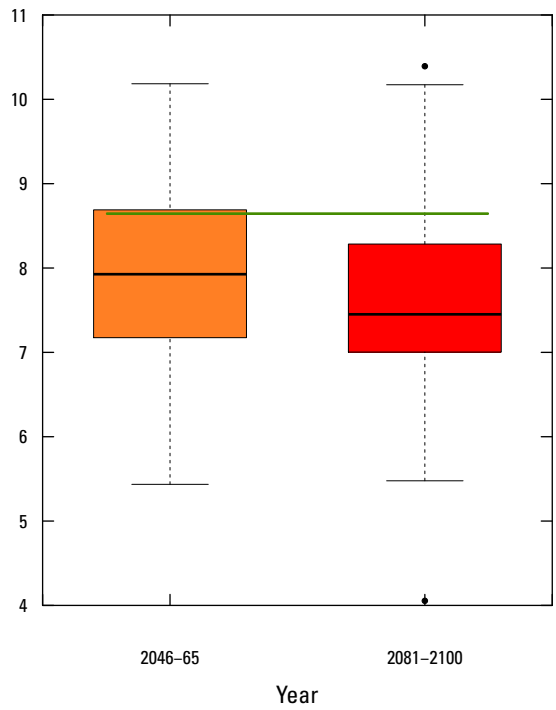
U.S. Geological Survey streamgauge station number 04121944, Little Muskegon River near Oak Grove, Michigan



U.S. Geological Survey streamgauge station number 04121970, Muskegon River near Croton, Michigan

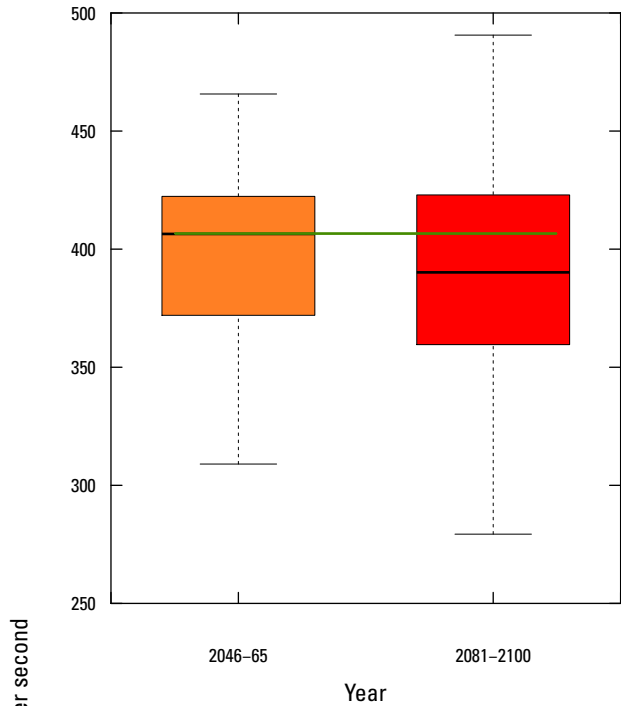


U.S. Geological Survey streamgauge station number 04122000, Muskegon River at Newaygo, Michigan

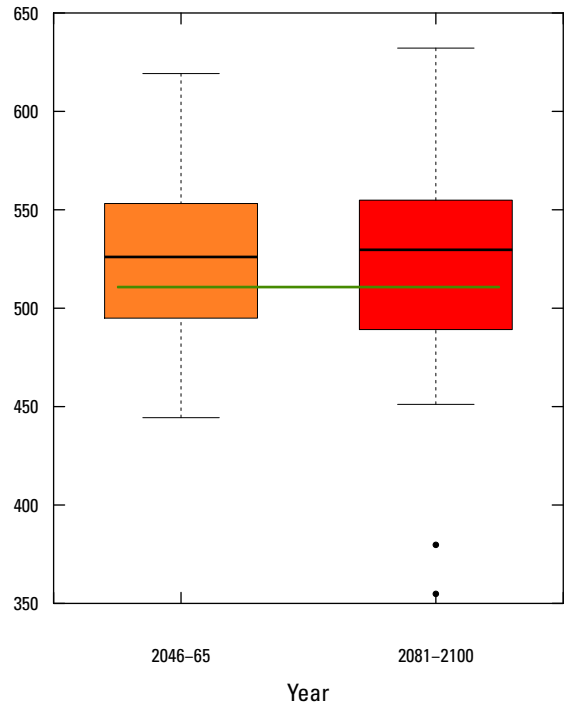


U.S. Geological Survey streamgauge station number 04122100, Bear Creek near Muskegon, Michigan

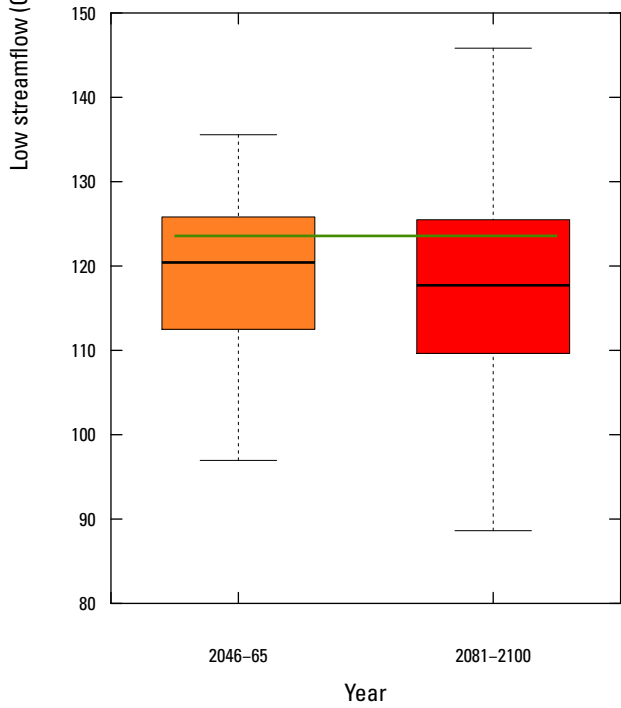
Low streamflow (Q_{90}), in cubic feet per second



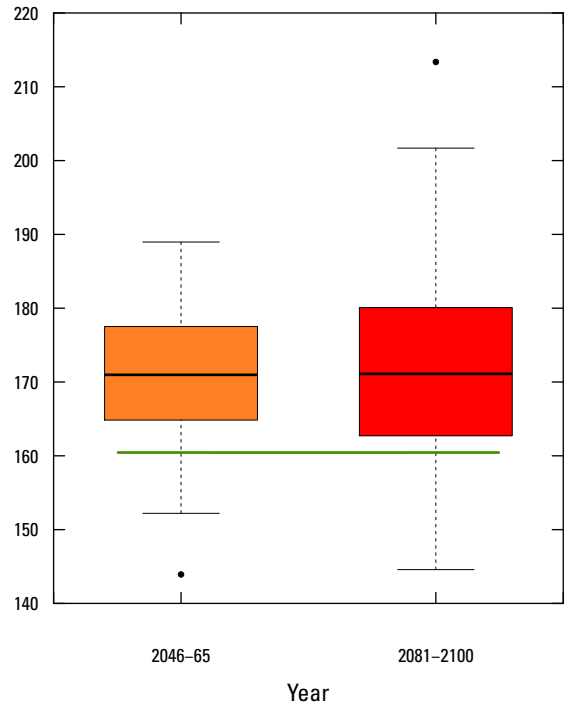
U.S. Geological Survey streamgauge station number 04122200, White River near Whitehall, Michigan



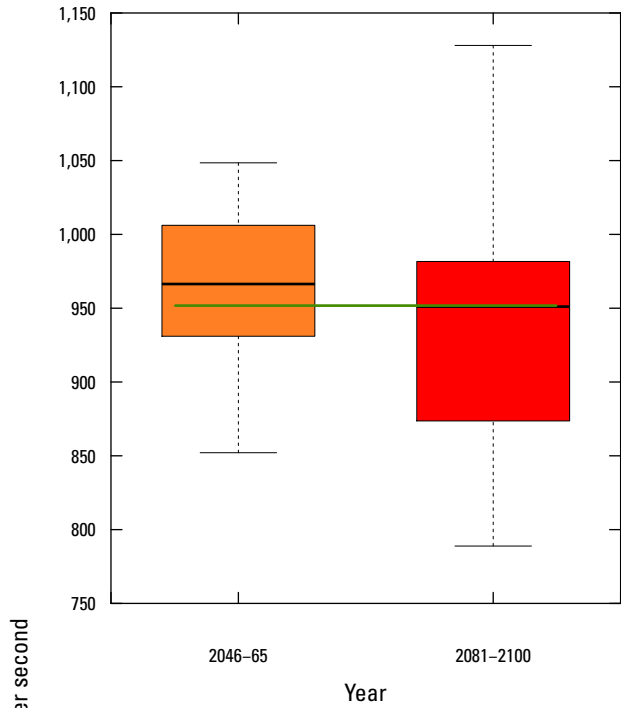
U.S. Geological Survey streamgauge station number 04122500, Pere Marquette River at Scottville, Michigan



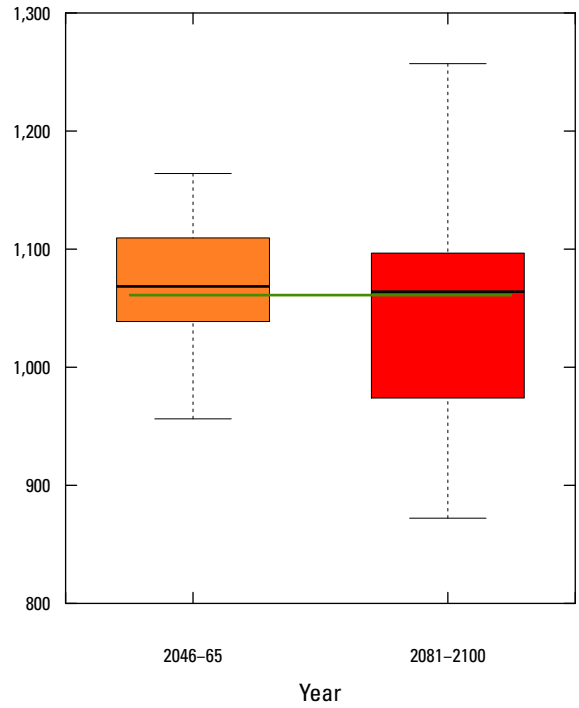
U.S. Geological Survey streamgauge station number 04123000, Big Sable River near Freesoil, Michigan



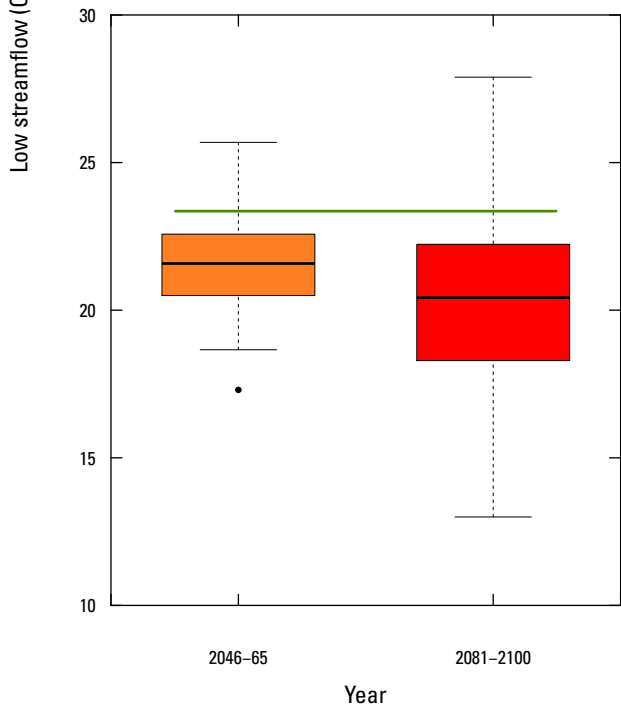
U.S. Geological Survey streamgauge station number 04123500, Manistee River near Grayling, Michigan



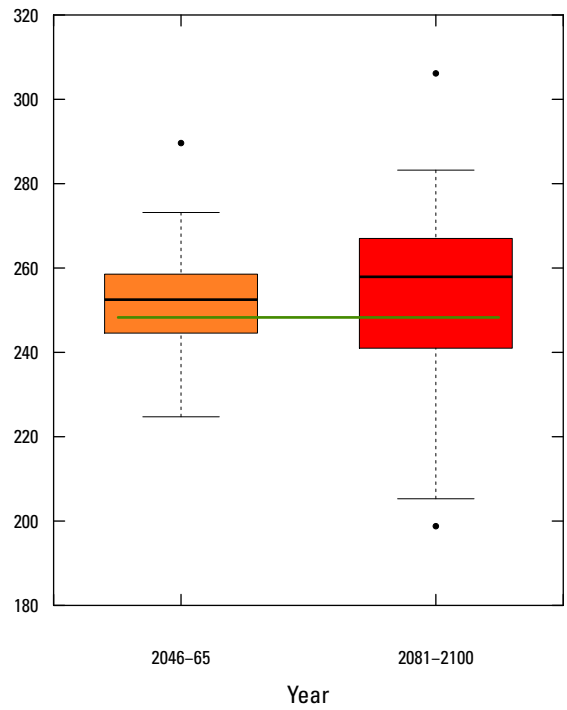
U.S. Geological Survey streamgauge station number 04124000, Manistee River near Sherman, Michigan



U.S. Geological Survey streamgauge station number 04124200, Manistee River near Mesick, Michigan



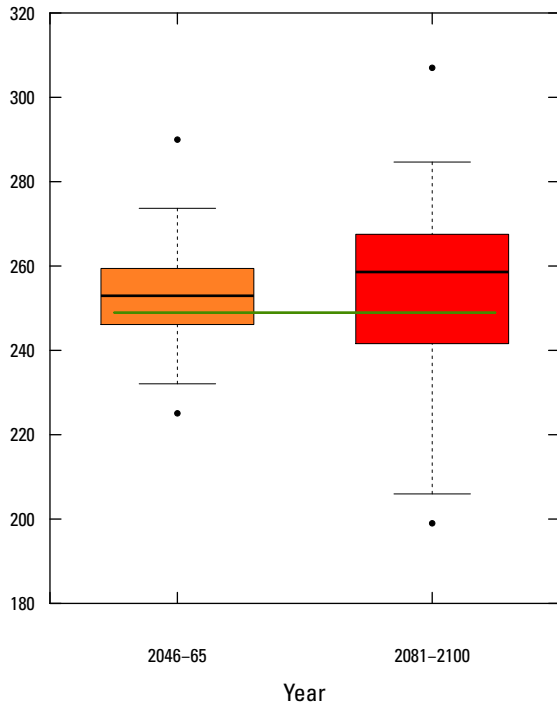
U.S. Geological Survey streamgauge station number 04124500, East Branch Pine River near Tustin, Michigan



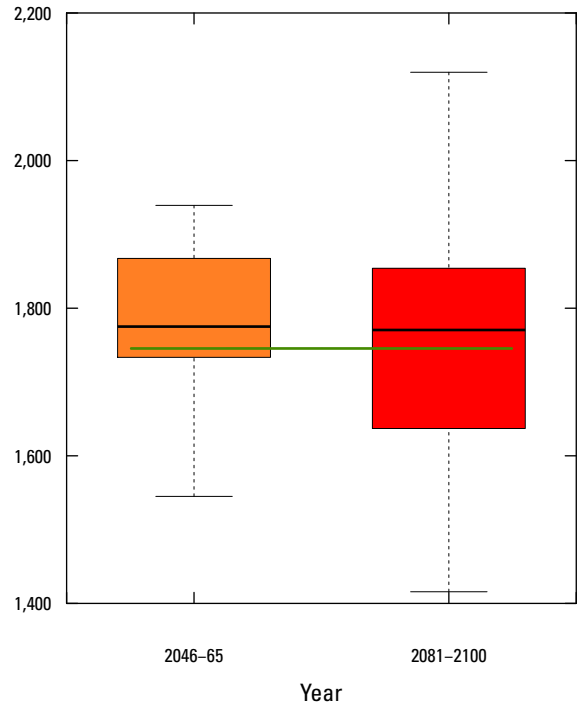
U.S. Geological Survey streamgauge station number 04125460, Pine River at High School Bridge near Hoxeyville, Michigan

Low streamflow (Q_{90}), in cubic feet per second

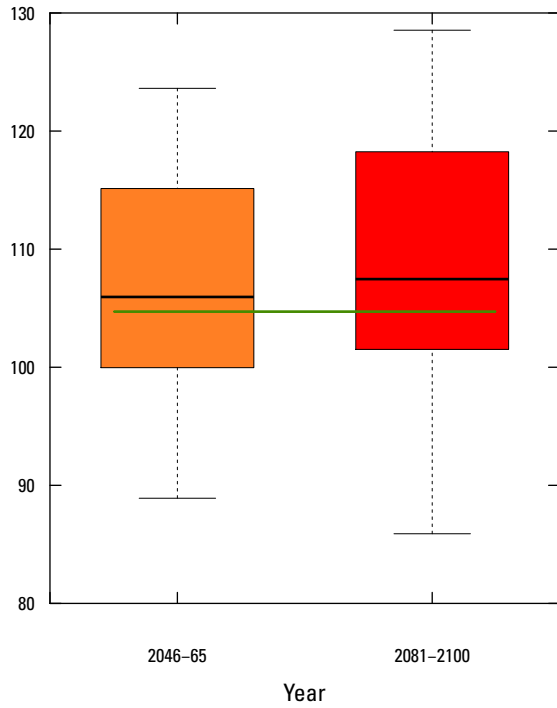
Low streamflow (Q_{90}), in cubic feet per second



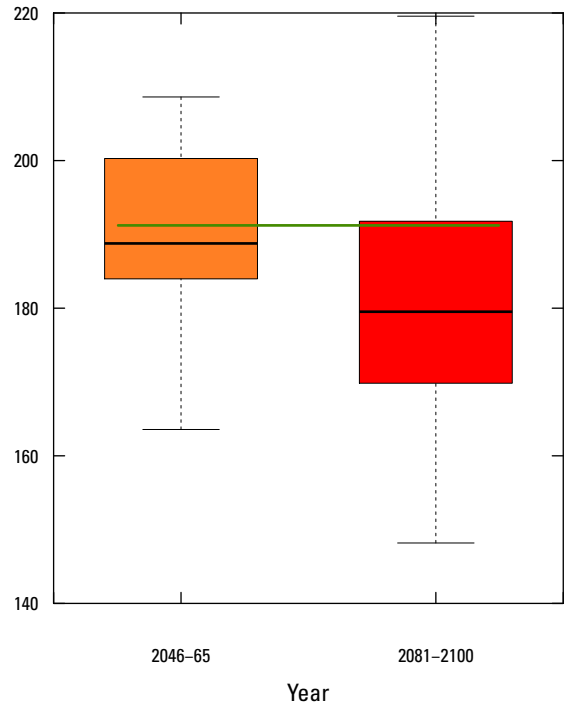
U.S. Geological Survey streamgage station number 04125500, Pine River near Hoxeyville, Michigan



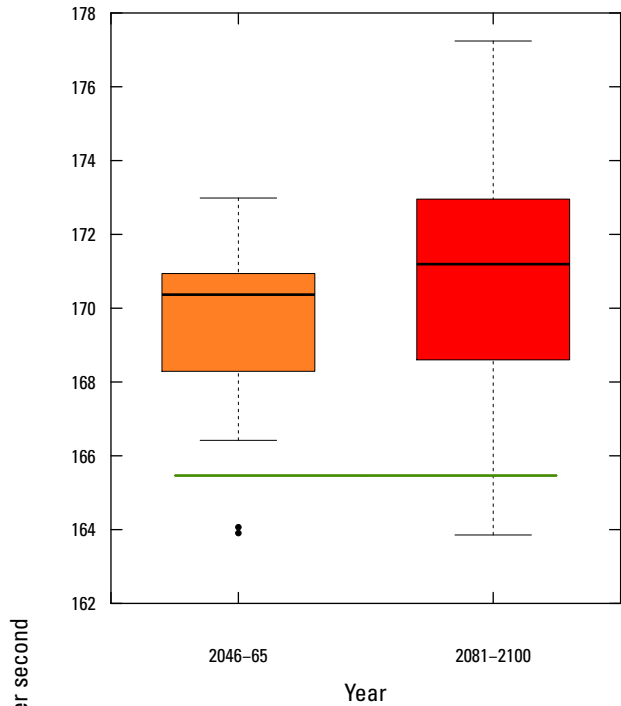
U.S. Geological Survey streamgage station number 04126000, Manistee River near Manistee, Michigan



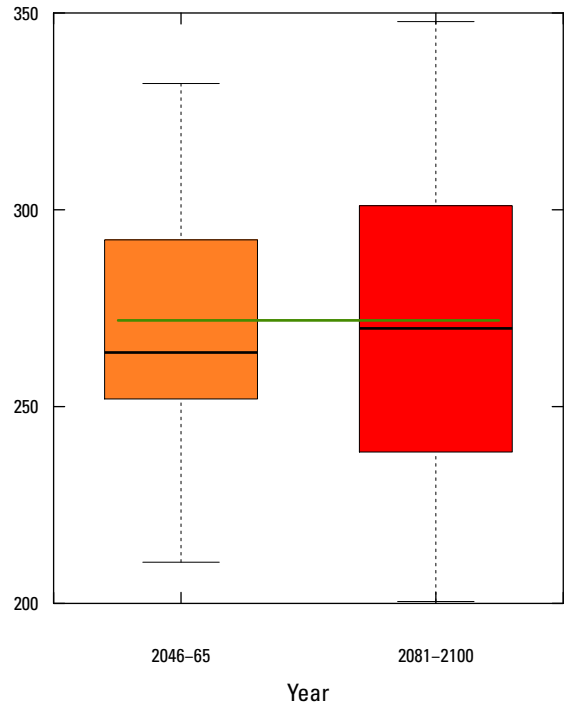
U.S. Geological Survey streamgage station number 04126740, Platte River at Honor, Michigan



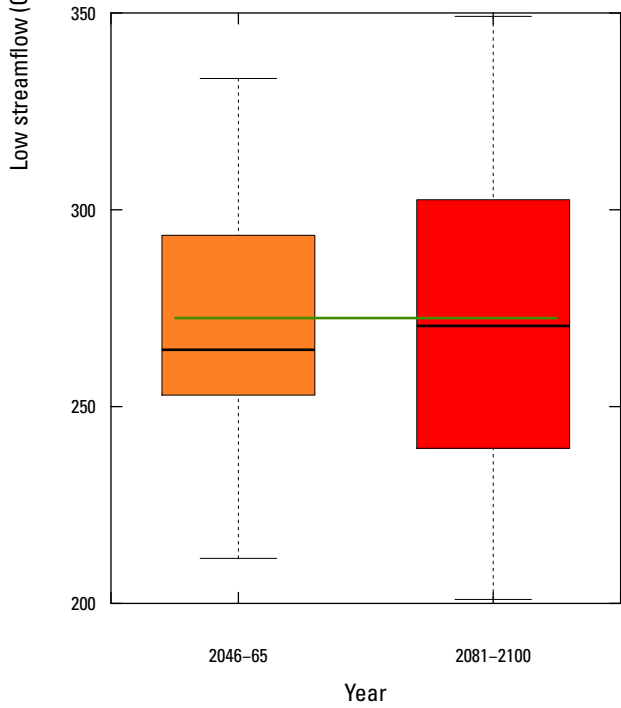
U.S. Geological Survey streamgage station number 04127000, Boardman River near Mayfield, Michigan



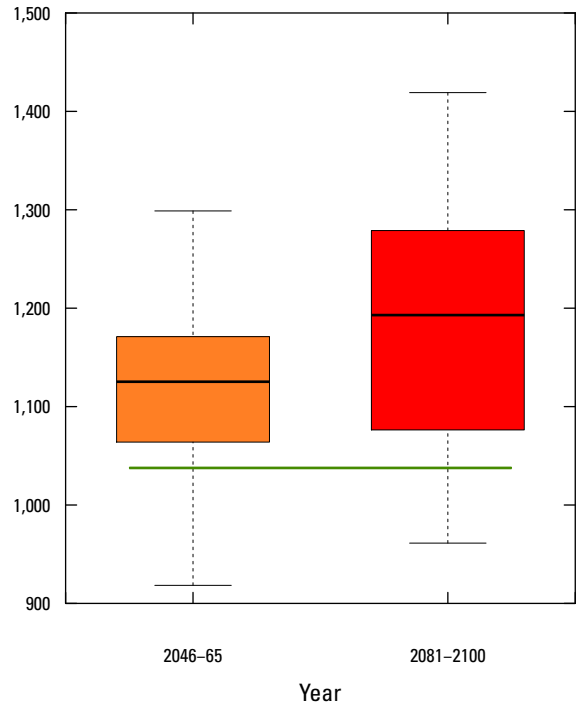
U.S. Geological Survey streamgage station number 04127800, Jordan River near East Jordan, Michigan



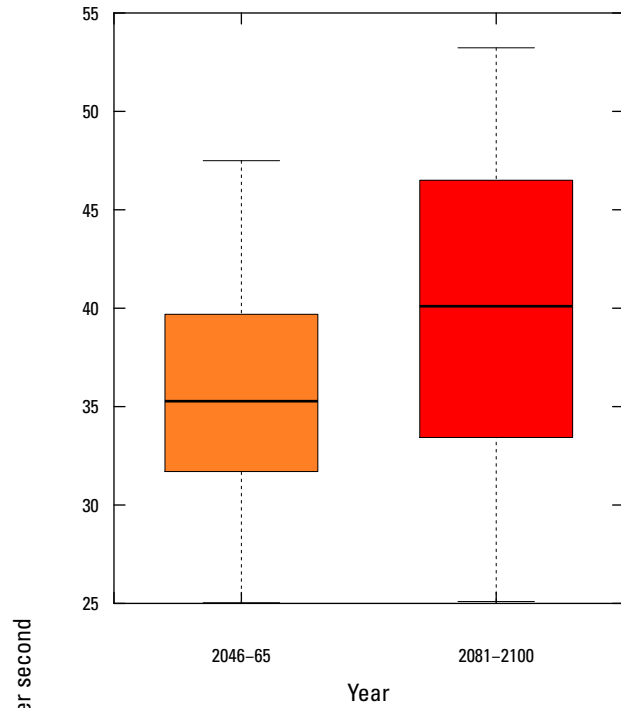
U.S. Geological Survey streamgage station number 04060993, Brule River at U.S. Highway 2 near Florence, Wisconsin



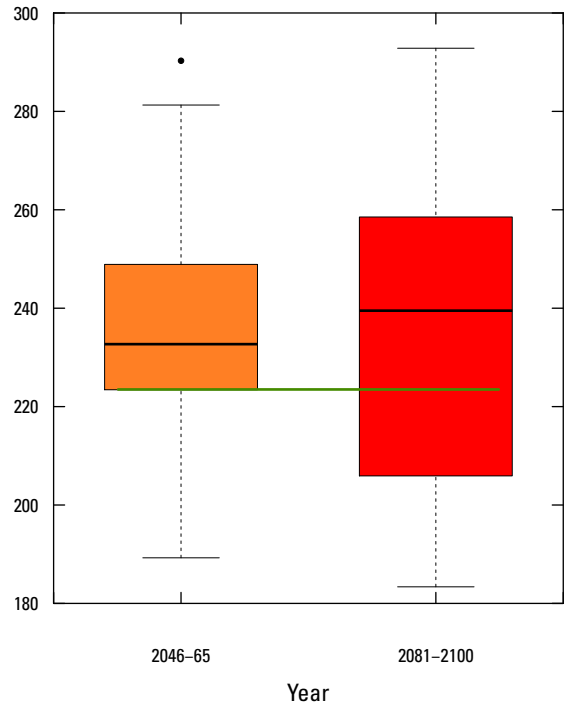
U.S. Geological Survey streamgage station number 04061000, Brule River near Florence, Wisconsin



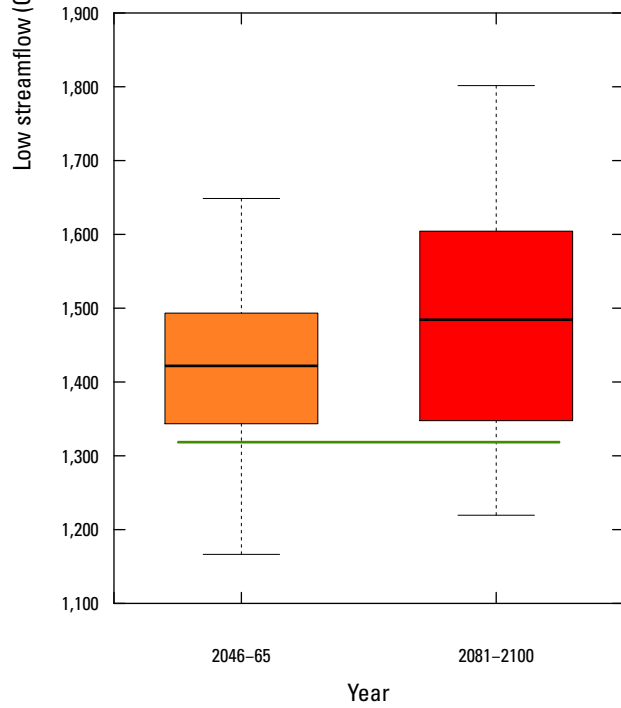
U.S. Geological Survey streamgage station number 04063000, Menominee River near Florence, Wisconsin



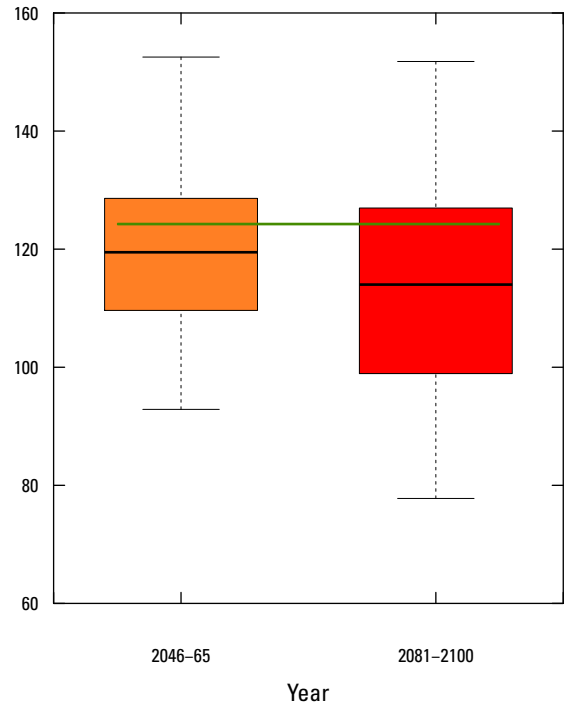
U.S. Geological Survey streamgage station number 04063700, Popple River near Fence, Wisconsin



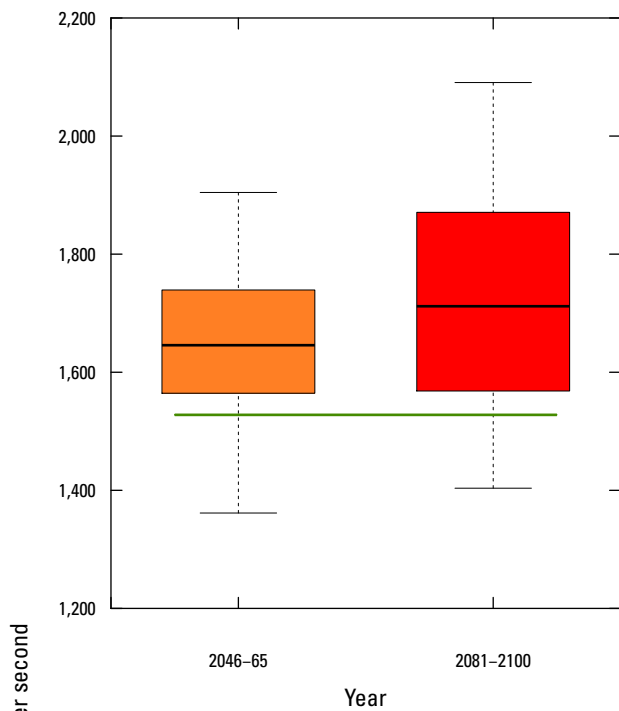
U.S. Geological Survey streamgage station number 04064500, Pine River Below Pine River Powerplant near Florence, Wisconsin



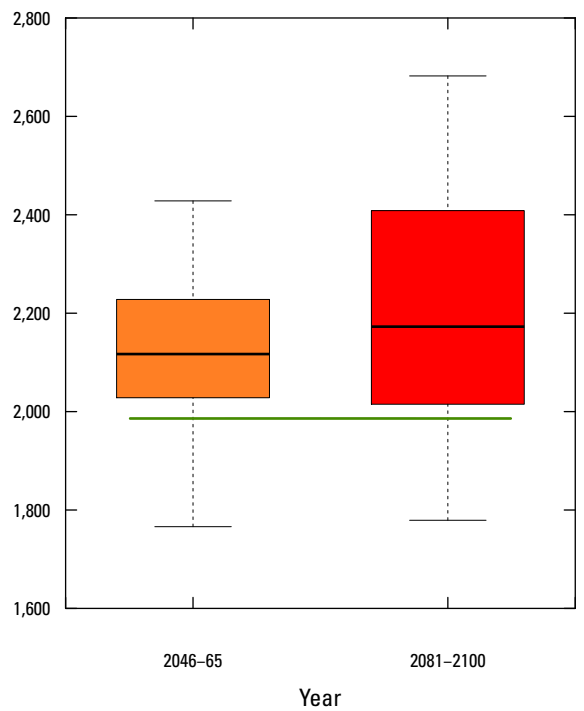
U.S. Geological Survey streamgage station number 04065106, Menominee River at Niagara, Wisconsin



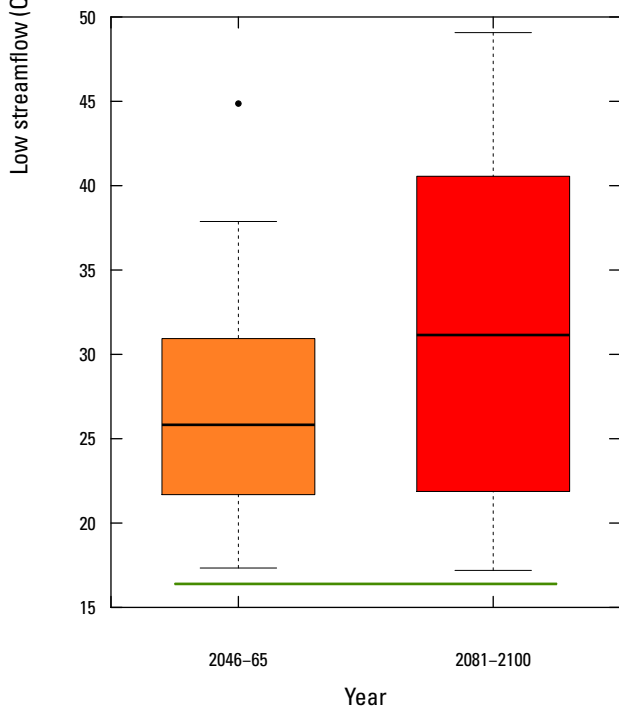
U.S. Geological Survey streamgage station number 04066500, Pike River at Amberg, Wisconsin



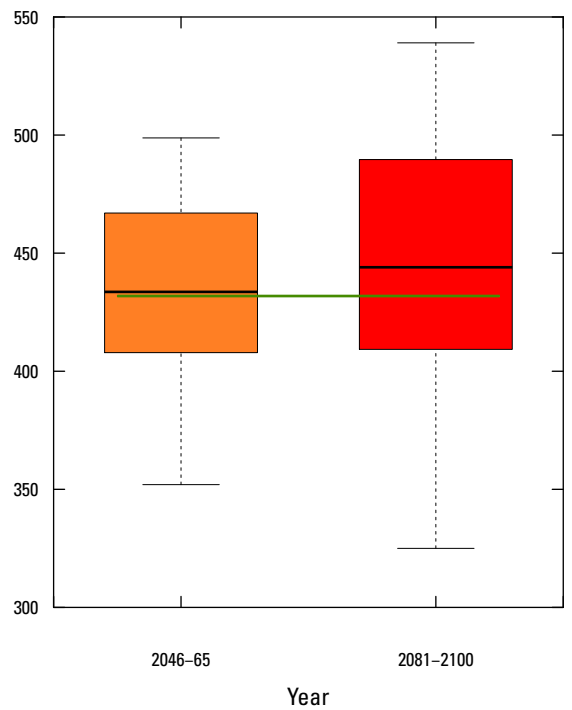
U.S. Geological Survey streamgage station number 04066003, Menominee River Below Pemene Creek near Pembine, Wisconsin



U.S. Geological Survey streamgage station number 04067500, Menominee River near McAllister, Wisconsin

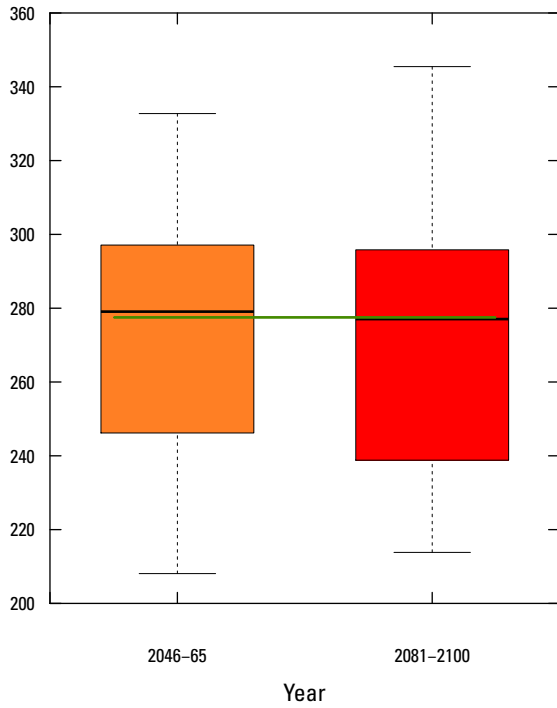


U.S. Geological Survey streamgage station number 04067958, Peshtigo River near Wabeno, Wisconsin

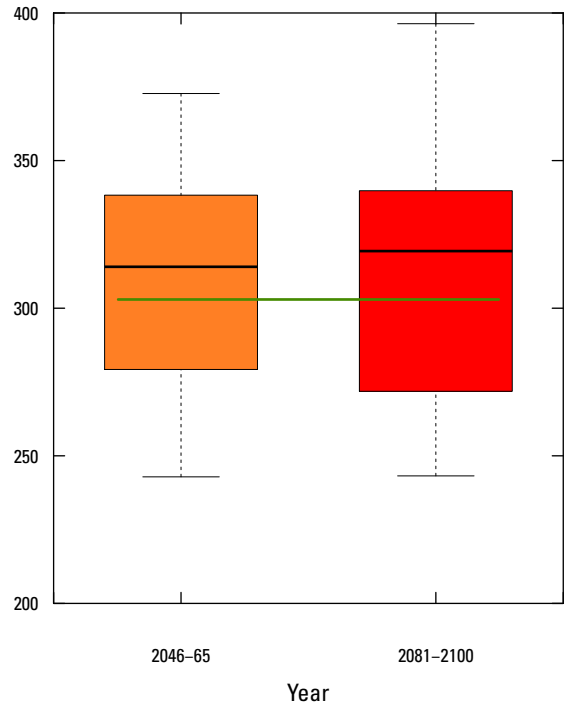


U.S. Geological Survey streamgage station number 04069500, Peshtigo River at Peshtigo, Wisconsin

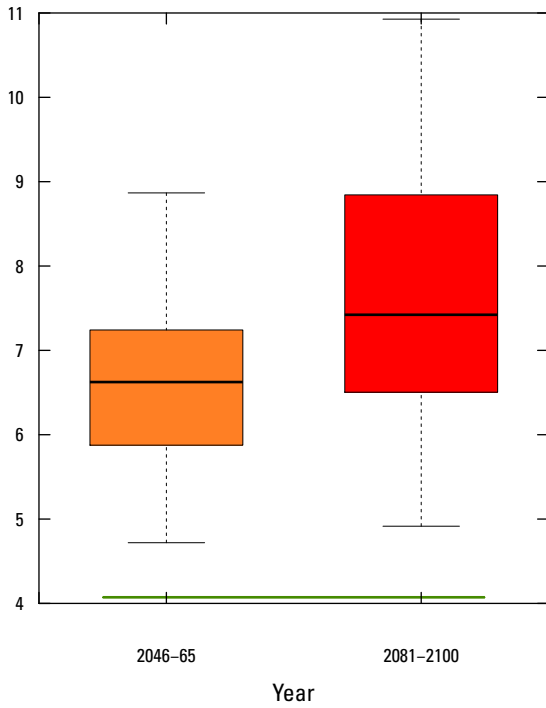
Low streamflow (Q_{90}), in cubic feet per second



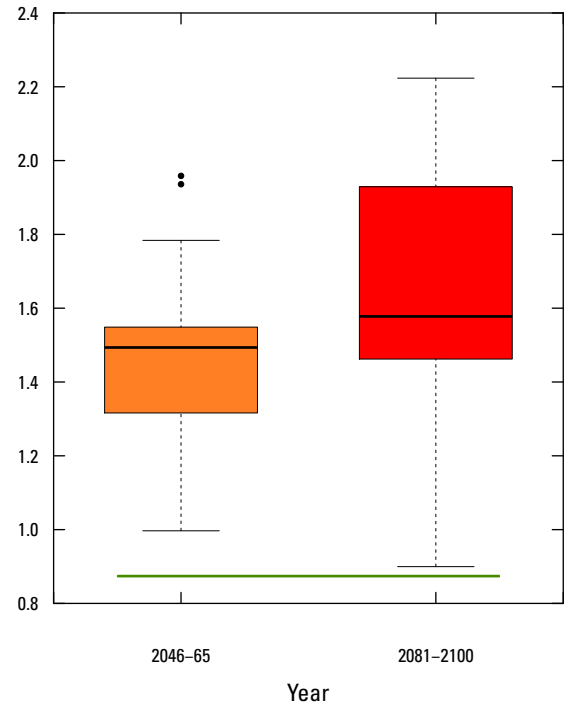
U.S. Geological Survey streamgage station number 04071000, Oconto River near Gillett, Wisconsin



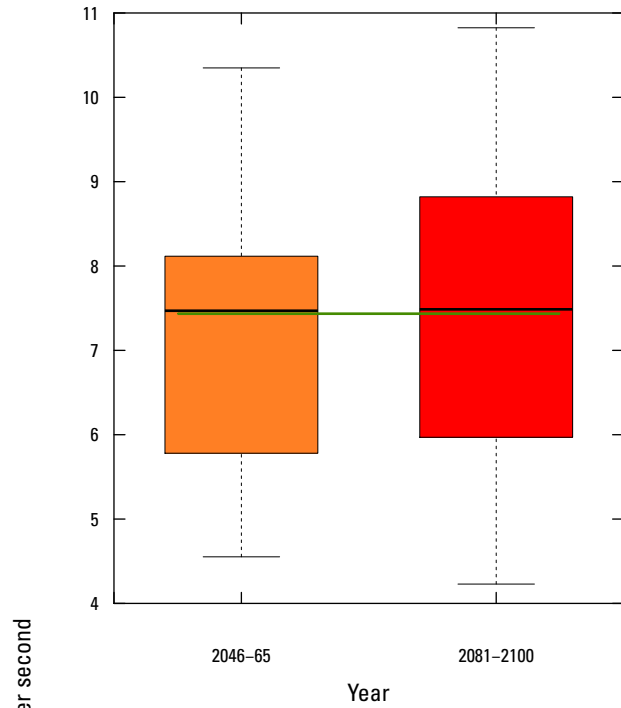
U.S. Geological Survey streamgage station number 04071765, Oconto River near Oconto, Wisconsin



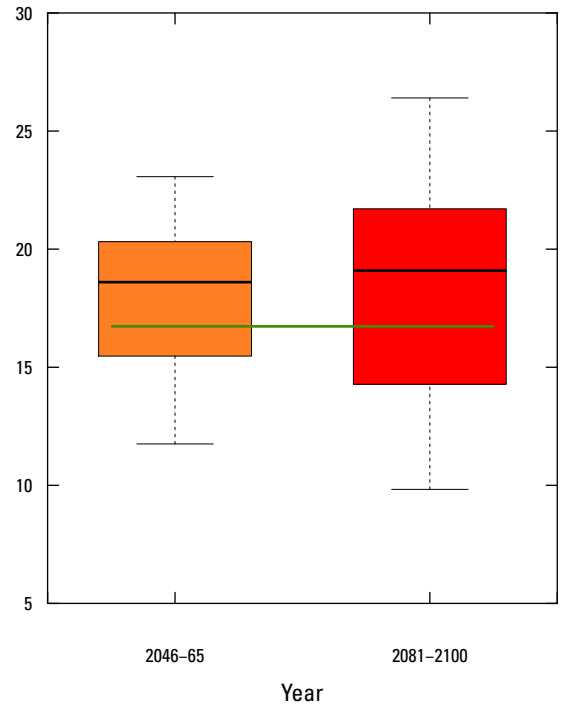
U.S. Geological Survey streamgage station number 04071858, Pensaukee River near Pensaukee, Wisconsin



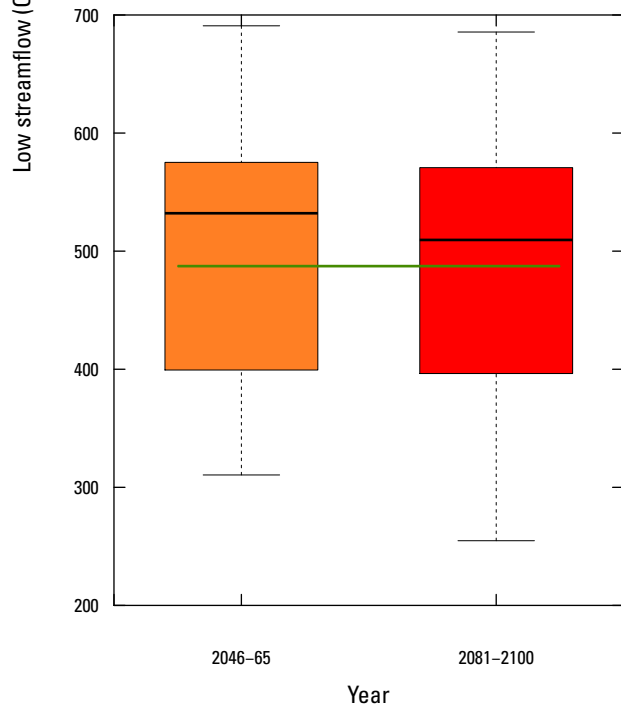
U.S. Geological Survey streamgage station number 04072150, Duck Creek near Howard, Wisconsin



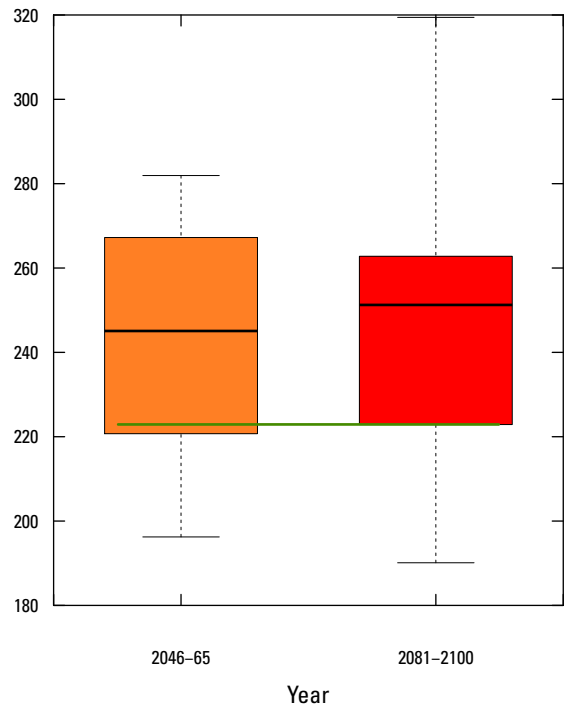
U.S. Geological Survey streamgauge station number 04073468, Green Lake Inlet at County Highway A near Green Lake, Wisconsin



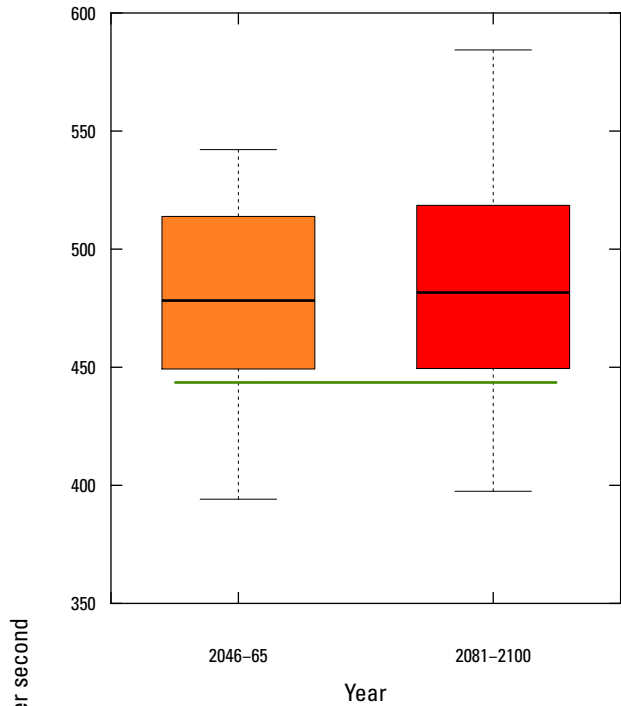
U.S. Geological Survey streamgauge station number 04073473, Puchyan River Downstream North Lawson Drive near Green Lake, Wisconsin



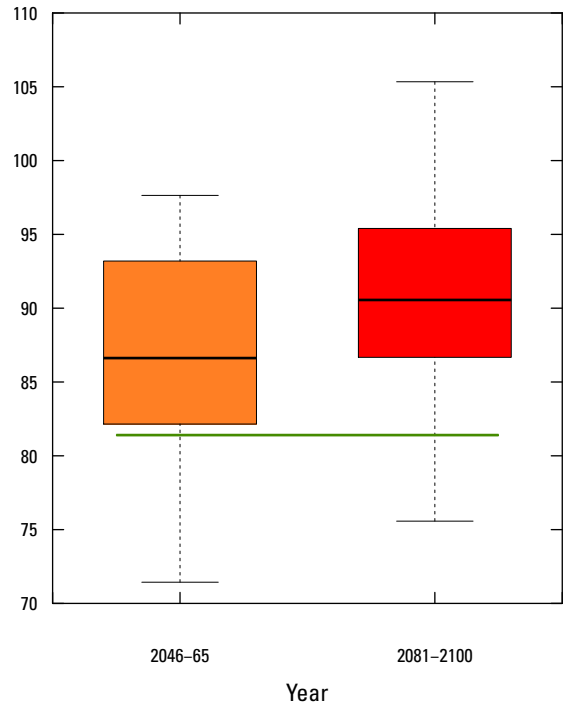
U.S. Geological Survey streamgauge station number 04073500, Fox River at Berlin, Wisconsin



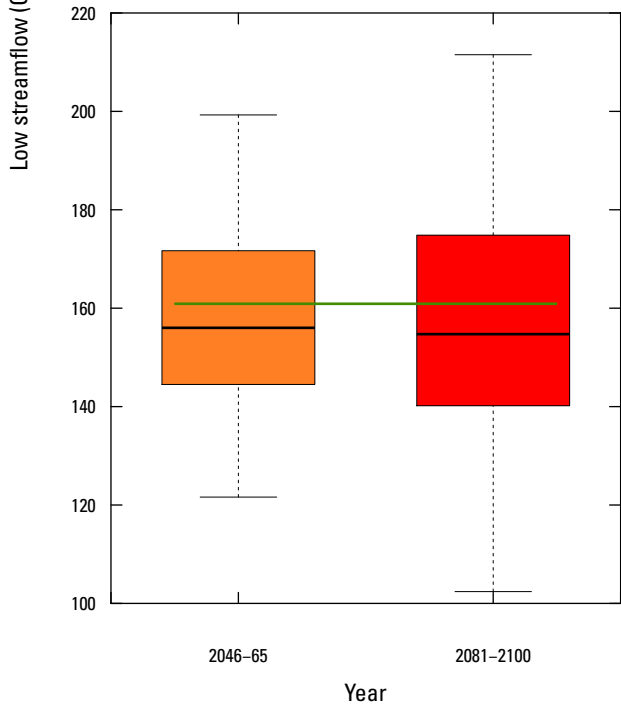
U.S. Geological Survey streamgauge station number 04074950, Wolf River at Langlade, Wisconsin



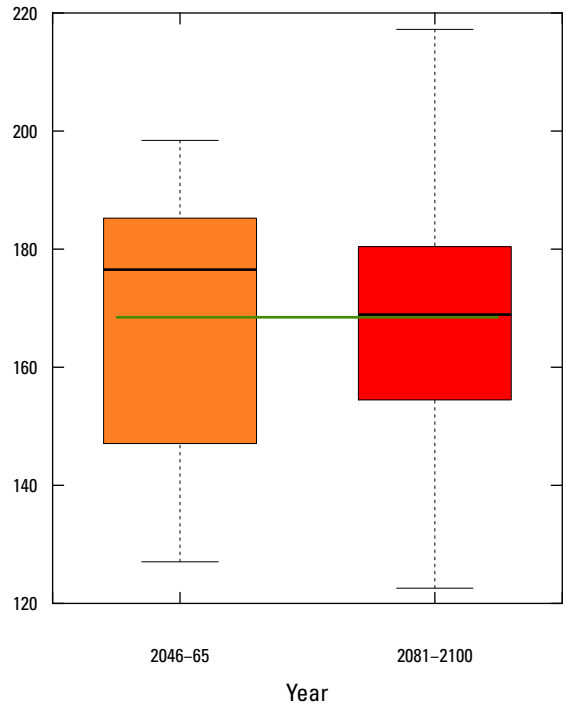
U.S. Geological Survey streamgage station number 04077400, Wolf River near Shawano, Wisconsin



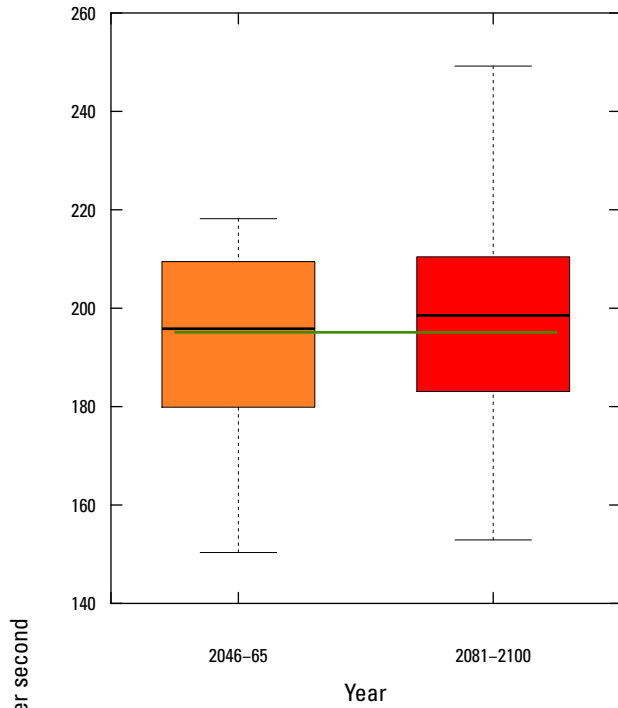
U.S. Geological Survey streamgage station number 04077630, Red River at Morgan Road near Morgan, Wisconsin



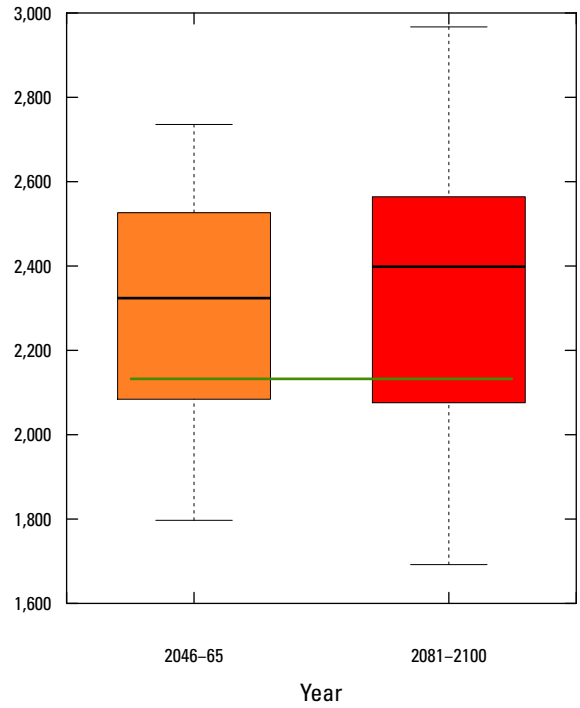
U.S. Geological Survey streamgage station number 04078500, Embarrass River near Embarrass, Wisconsin



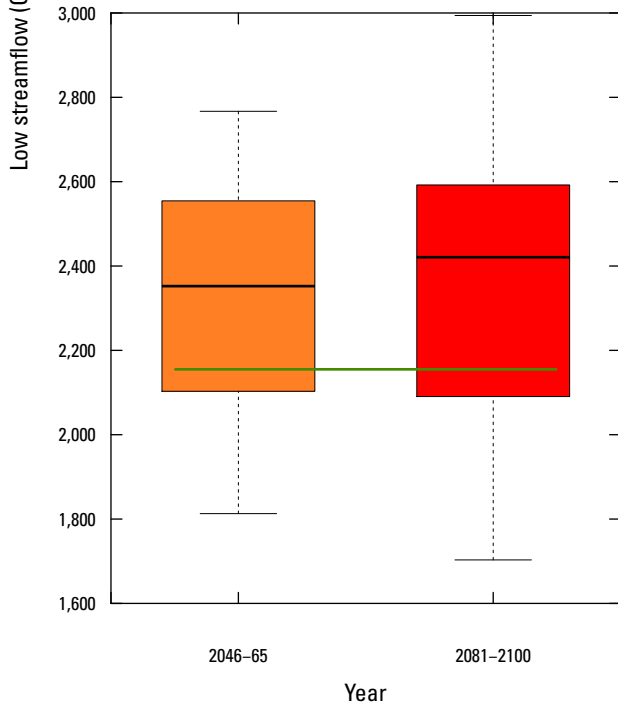
U.S. Geological Survey streamgage station number 04080000, Little Wolf River at Royalton, Wisconsin



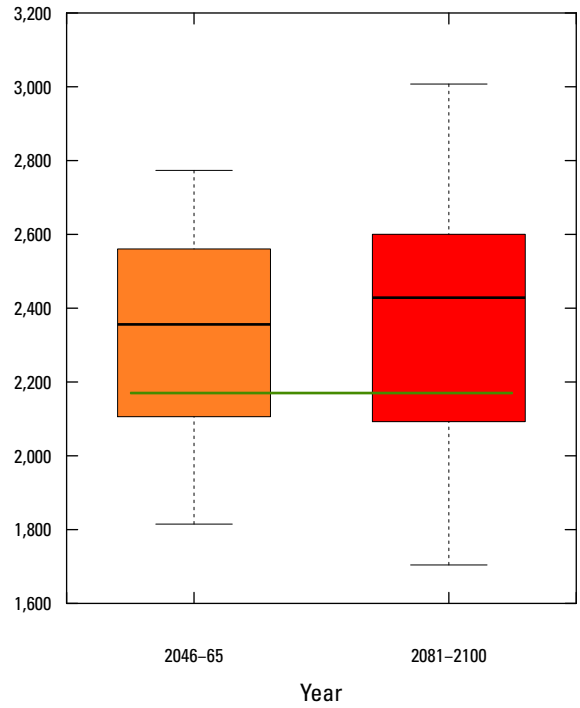
U.S. Geological Survey streamgauge station number 04081000, Waupaca River near Waupaca, Wisconsin



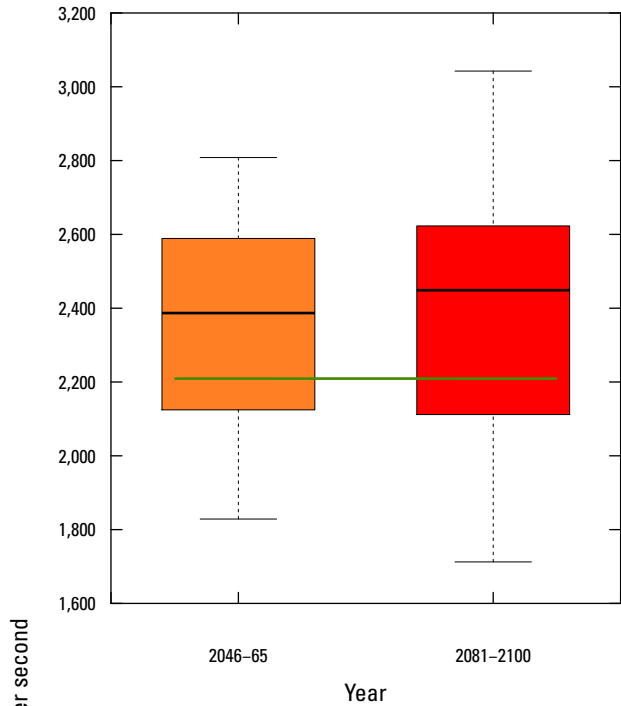
U.S. Geological Survey streamgauge station number 04082400, Fox River at Oshkosh, Wisconsin



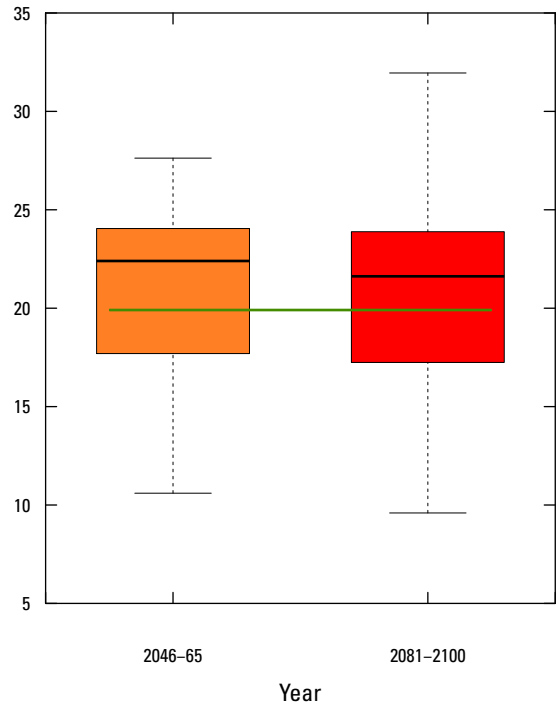
U.S. Geological Survey streamgauge station number 04084445, Fox River at Appleton, Wisconsin



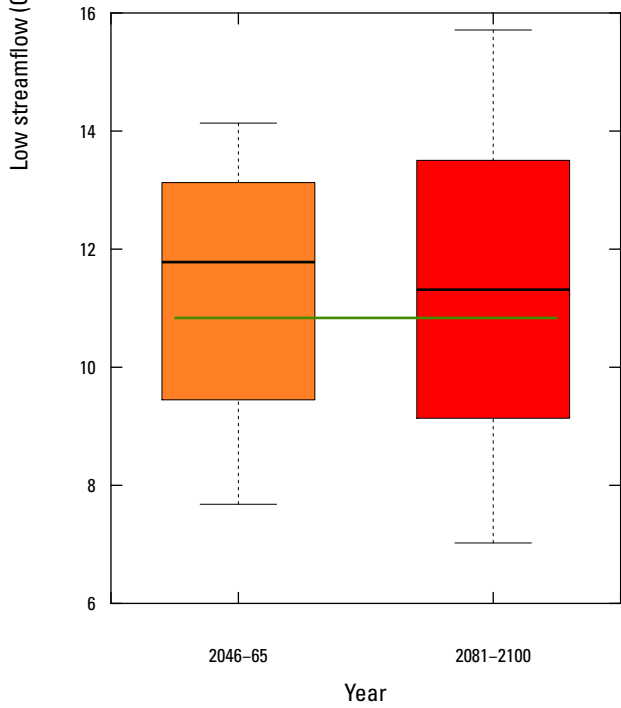
U.S. Geological Survey streamgauge station number 04084500, Fox River at Rapide Croche Dam near Wrightstown, Wisconsin



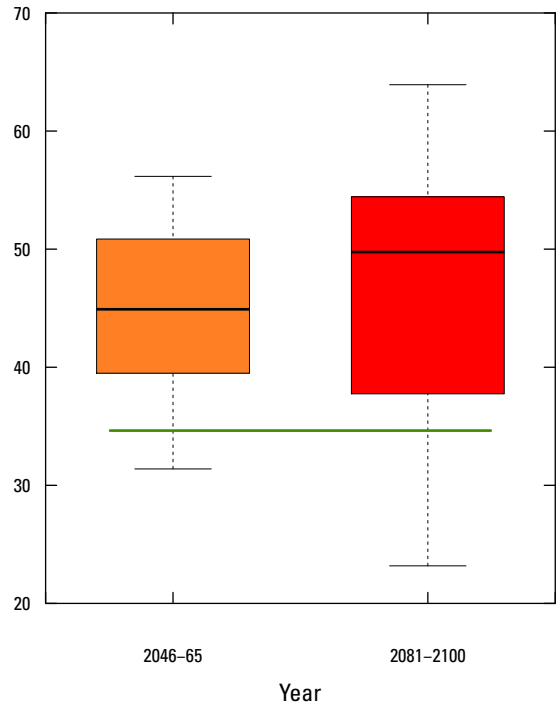
U.S. Geological Survey streamgauge station number 040851385, Fox River at Oil Tank Depot at Green Bay, Wisconsin



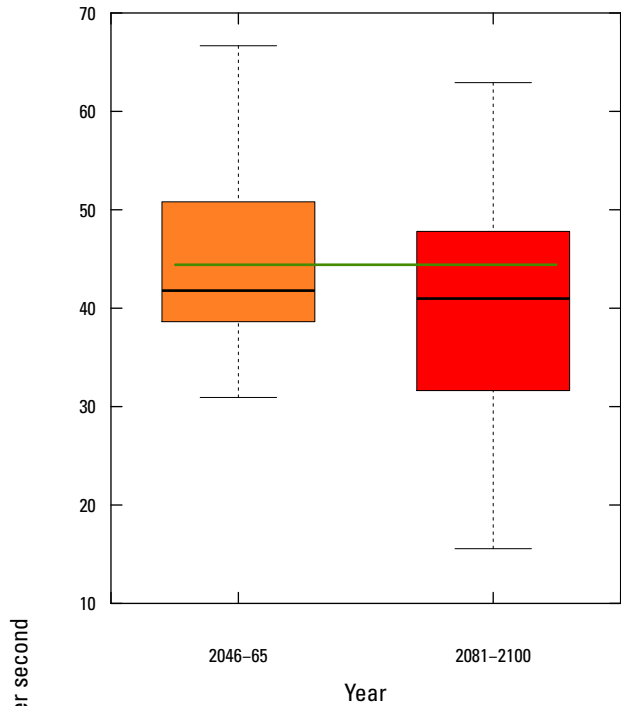
U.S. Geological Survey streamgauge station number 04085200, Kewaunee River near Kewaunee, Wisconsin



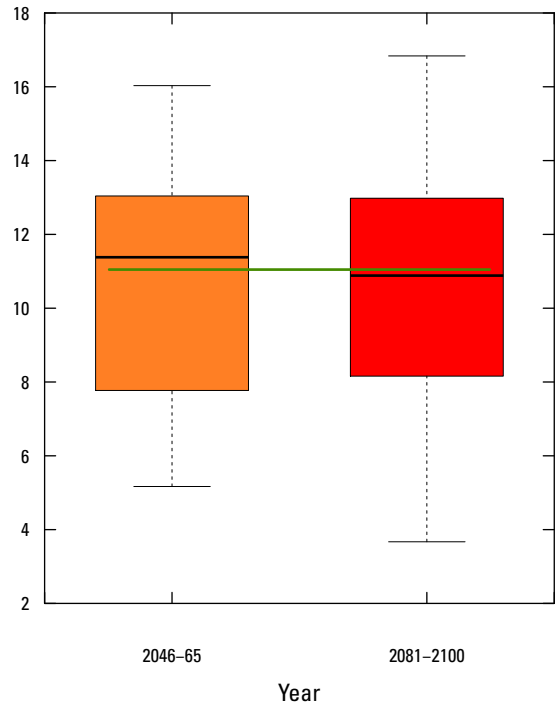
U.S. Geological Survey streamgauge station number 04085281, East Twin River at Mishicot, Wisconsin



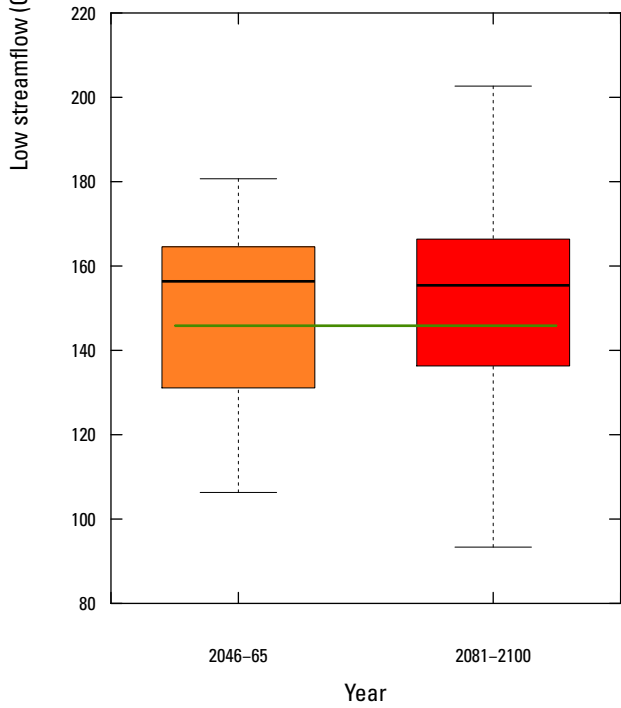
U.S. Geological Survey streamgauge station number 04085427, Manitowoc River at Manitowoc, Wisconsin



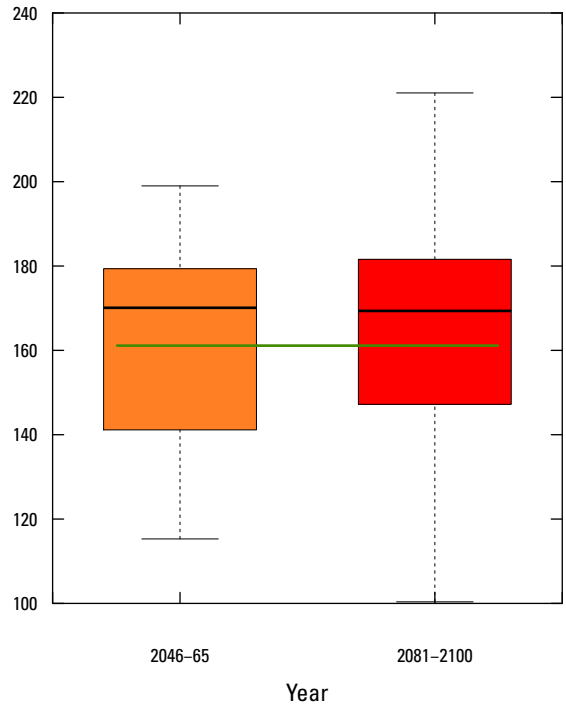
U.S. Geological Survey streamgage station number 04086000, Sheboygan River at Sheboygan, Wisconsin



U.S. Geological Survey streamgage station number 04086500, Cedar Creek near Cedarburg, Wisconsin

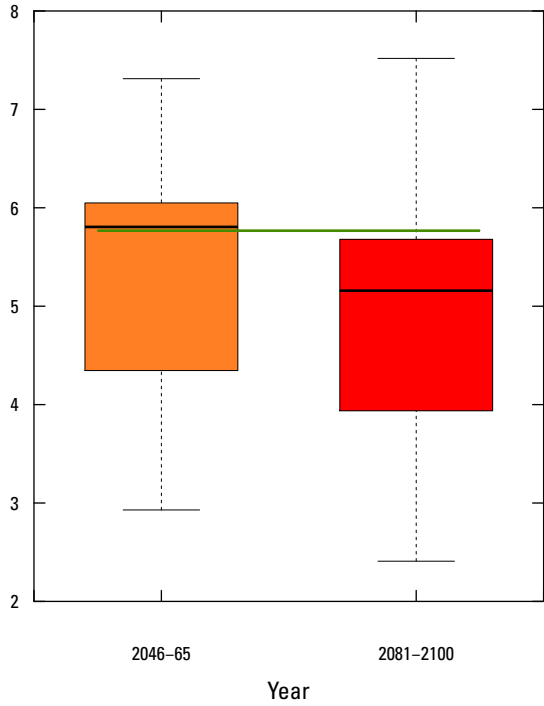


U.S. Geological Survey streamgage station number 04086600, Milwaukee River near Cedarburg, Wisconsin

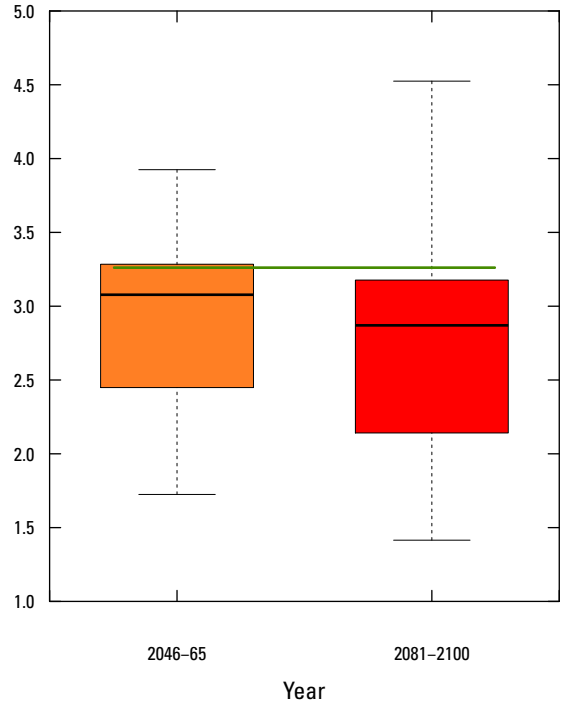


U.S. Geological Survey streamgage station number 04087000, Milwaukee River at Milwaukee, Wisconsin

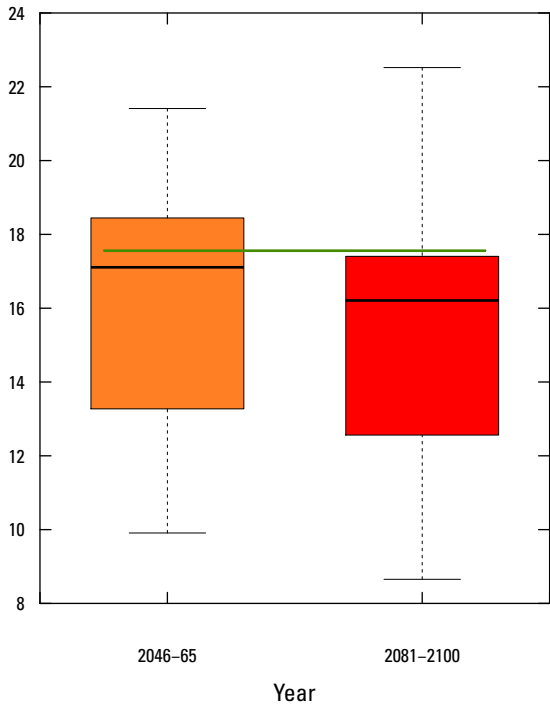
Low streamflow (Q_{90}), in cubic feet per second



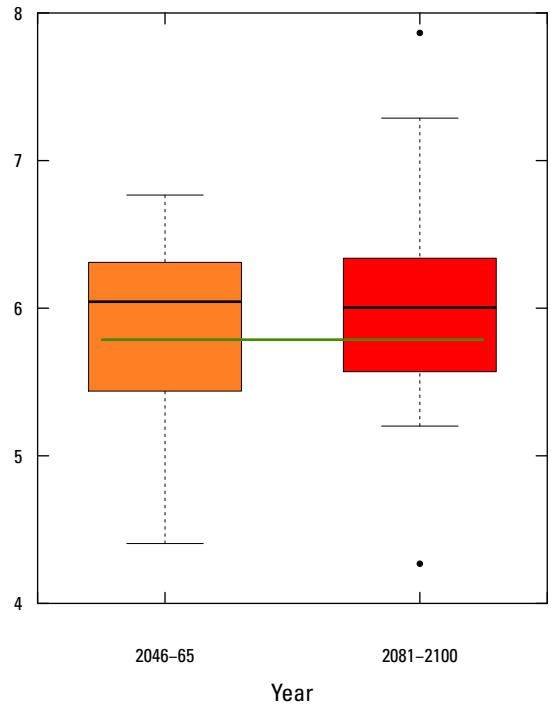
U.S. Geological Survey streamgauge station number 04087030, Menomonee River at Menomonee Falls, Wisconsin



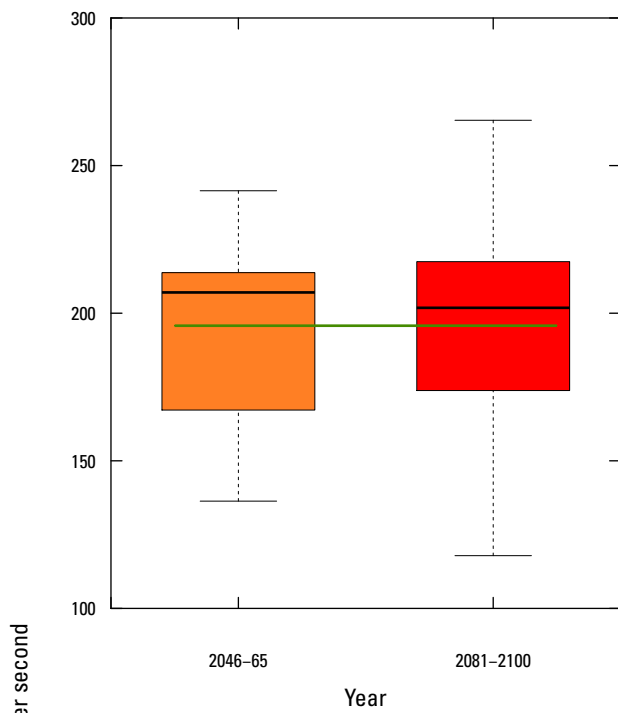
U.S. Geological Survey streamgauge station number 04087088, Underwood Creek at Wauwatosa, Wisconsin



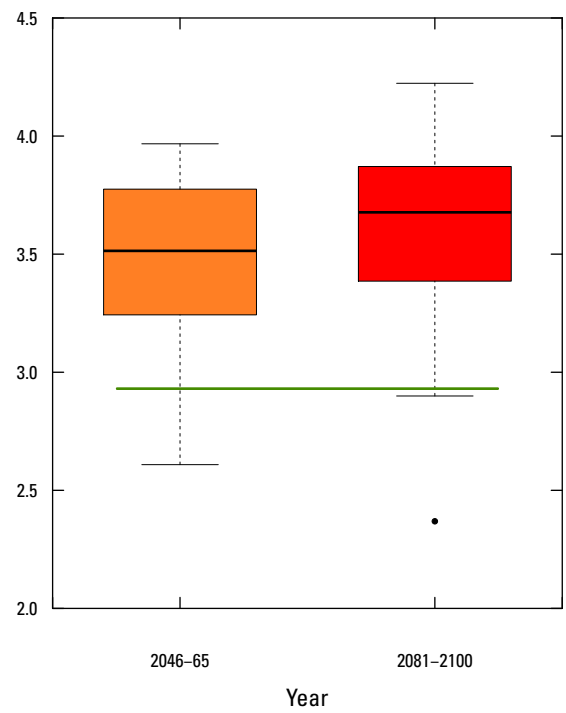
U.S. Geological Survey streamgauge station number 04087120, Menomonee River at Wauwatosa, Wisconsin



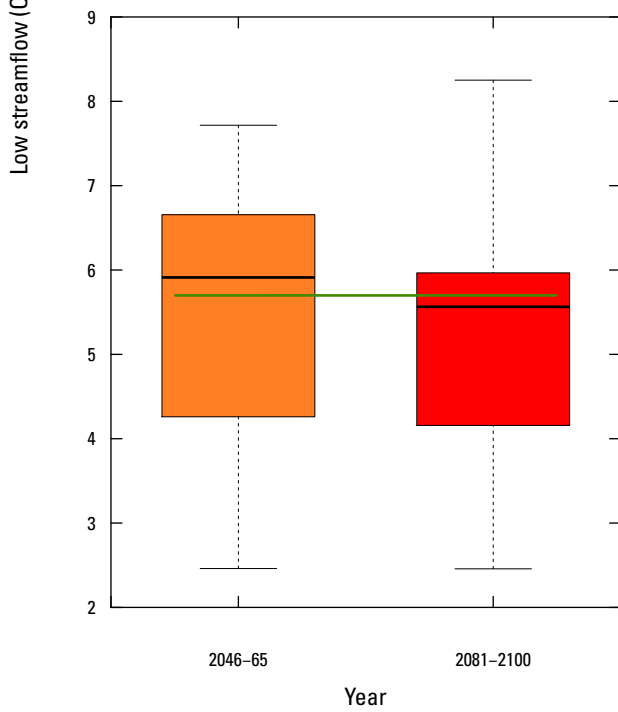
U.S. Geological Survey streamgauge station number 04087159, Kinnickinnic River at South 11th Street at Milwaukee, Wisconsin



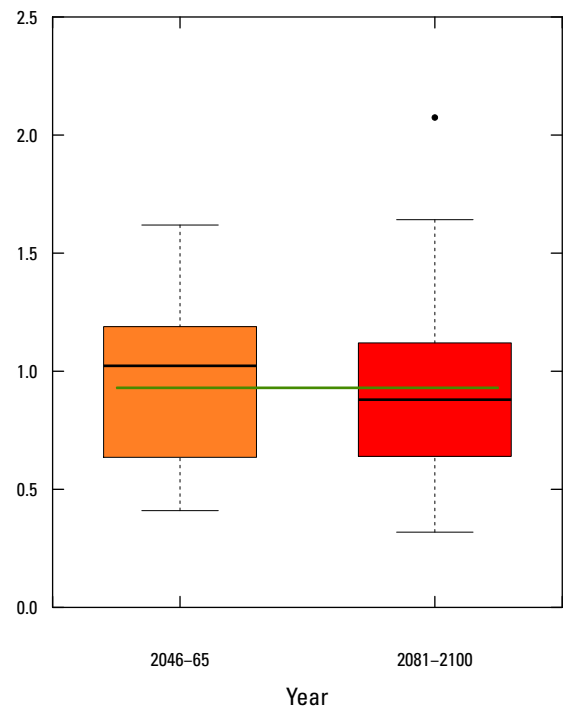
U.S. Geological Survey streamgage station number 04087170, Milwaukee River at Mouth at Milwaukee, Wisconsin



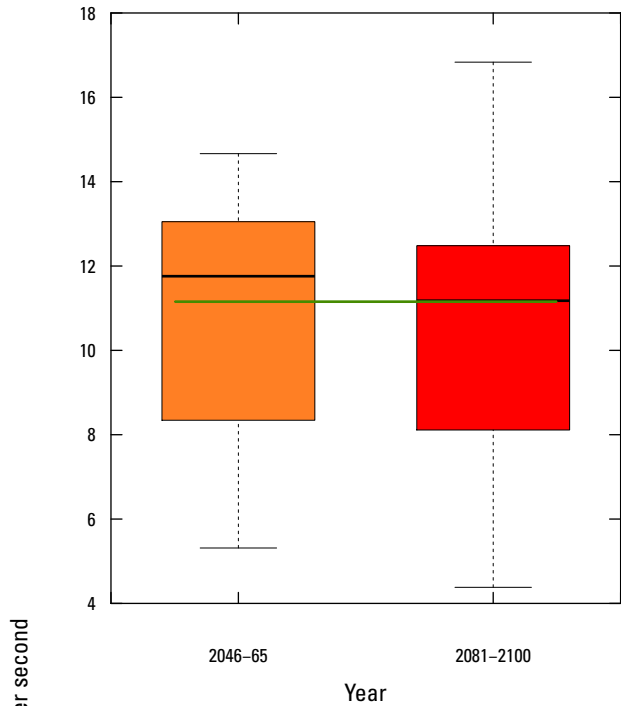
U.S. Geological Survey streamgage station number 04087204, Oak Creek at South Milwaukee, Wisconsin



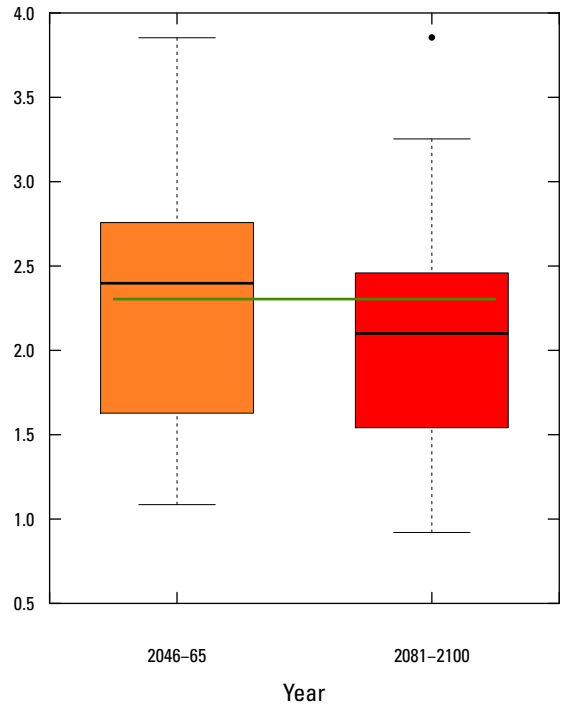
U.S. Geological Survey streamgage station number 04087220, Root River near Franklin, Wisconsin



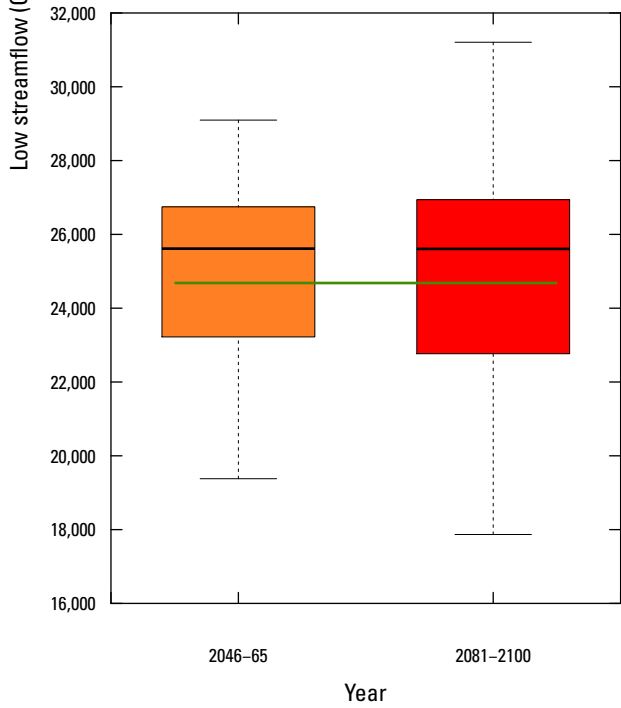
U.S. Geological Survey streamgage station number 04087233, Root River Canal near Franklin, Wisconsin



U.S. Geological Survey streamgage station number 04087240, Root River at Racine, Wisconsin



U.S. Geological Survey streamgage station number 04087257, Pike River near Racine, Wisconsin



Combined Flow Into Lake Michigan