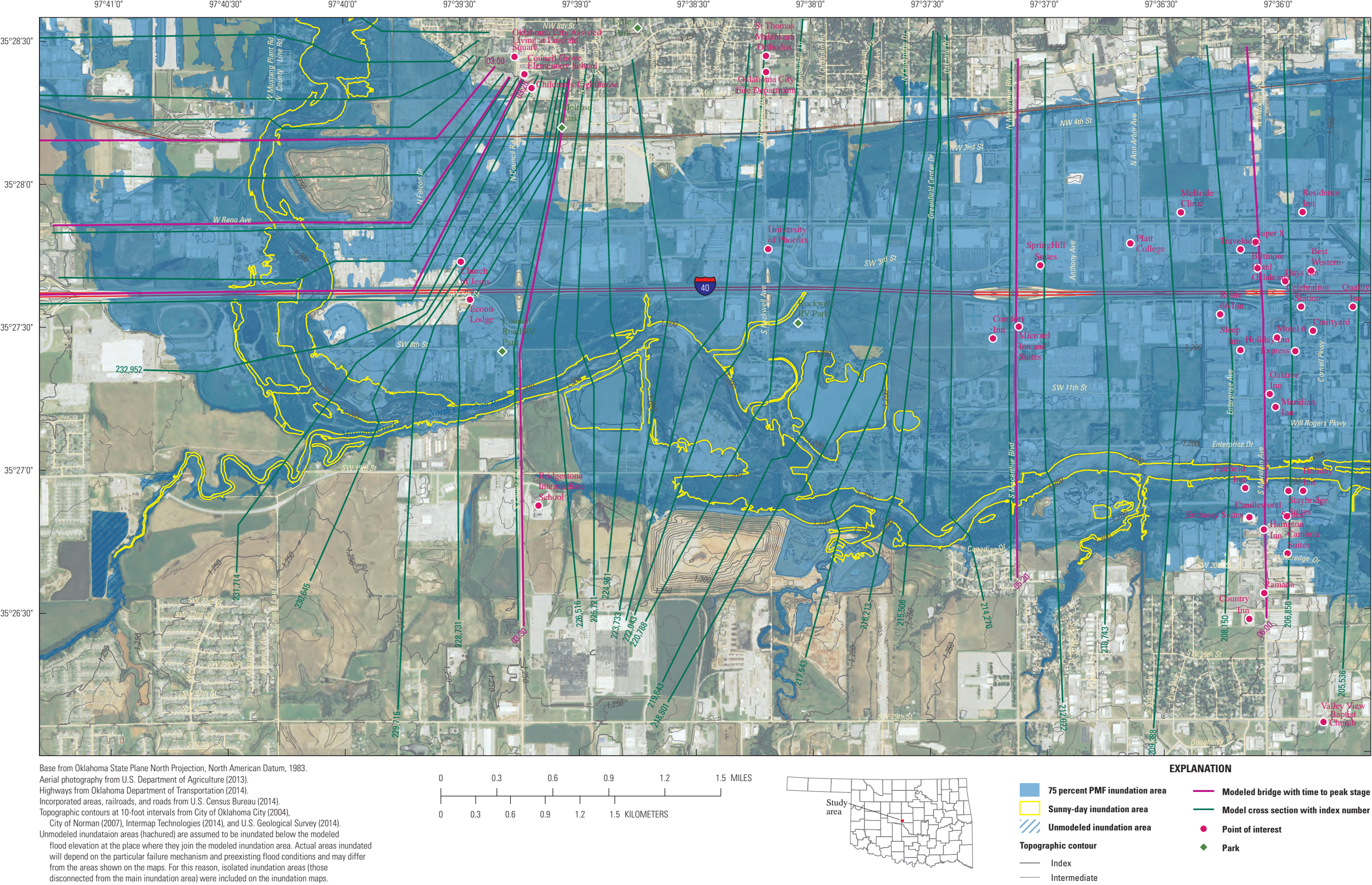


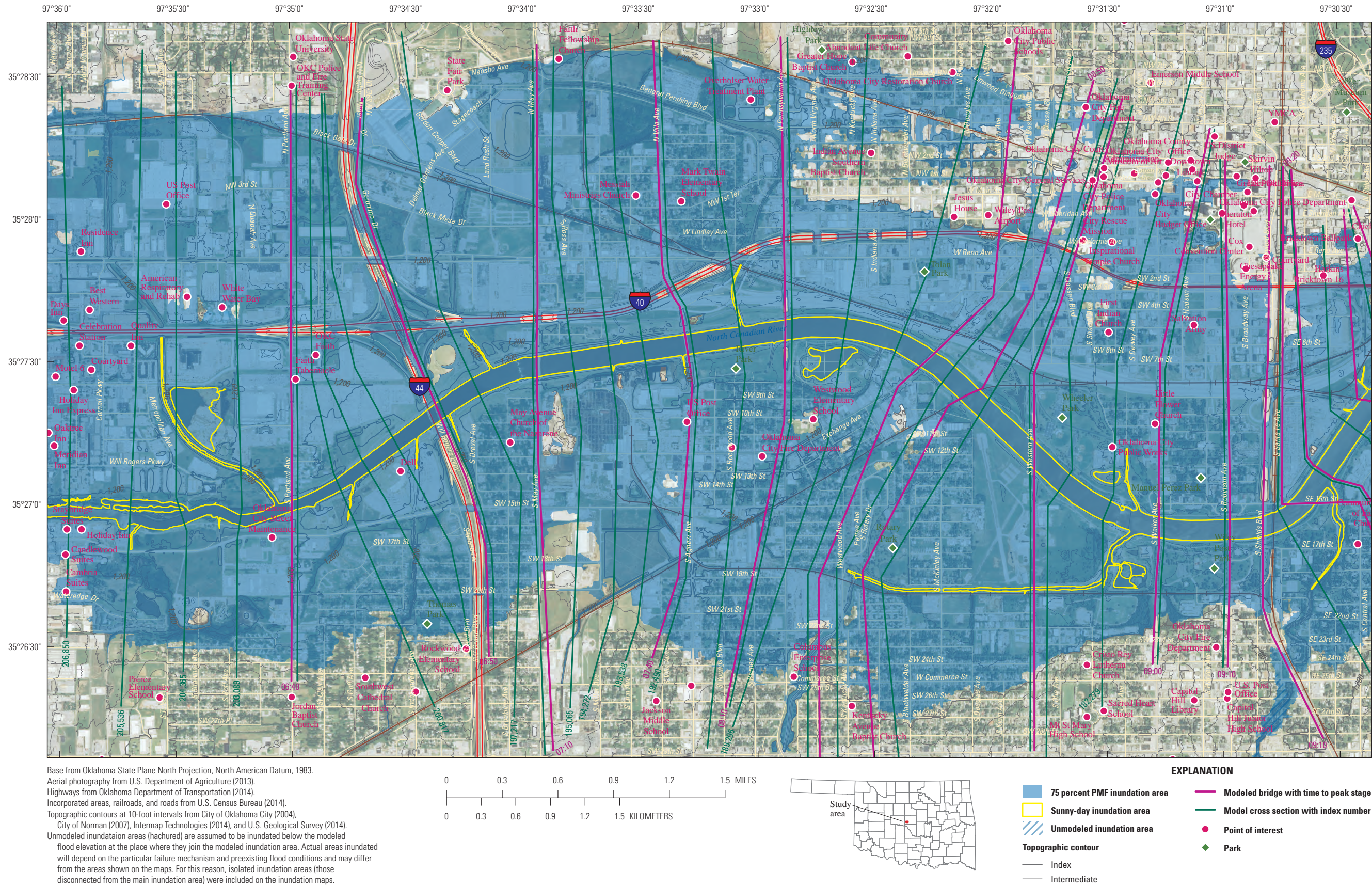
Appendix 6-1. Inundated areas for the 75-percent probable maximum flood (PMF) and sunny-day Lake Overholser dam-breach model scenarios and time to peak stage for the 75-percent probable maximum flood.





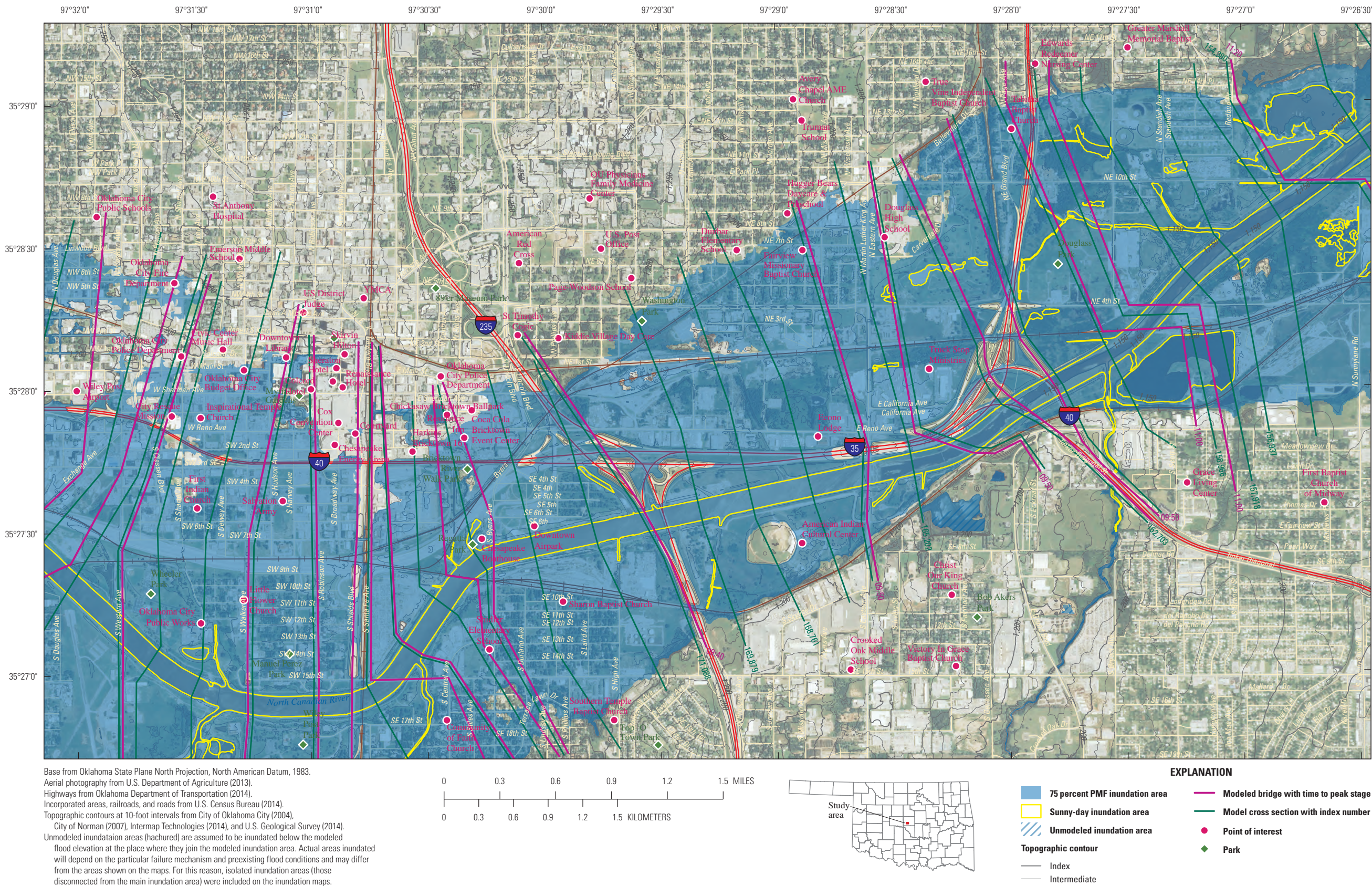
Appendix 6-2. Inundated areas for the 75-percent probable maximum flood (PMF) and sunny-day Lake Overholser dam-breach model scenarios and time to peak stage for the 75-percent probable maximum flood.





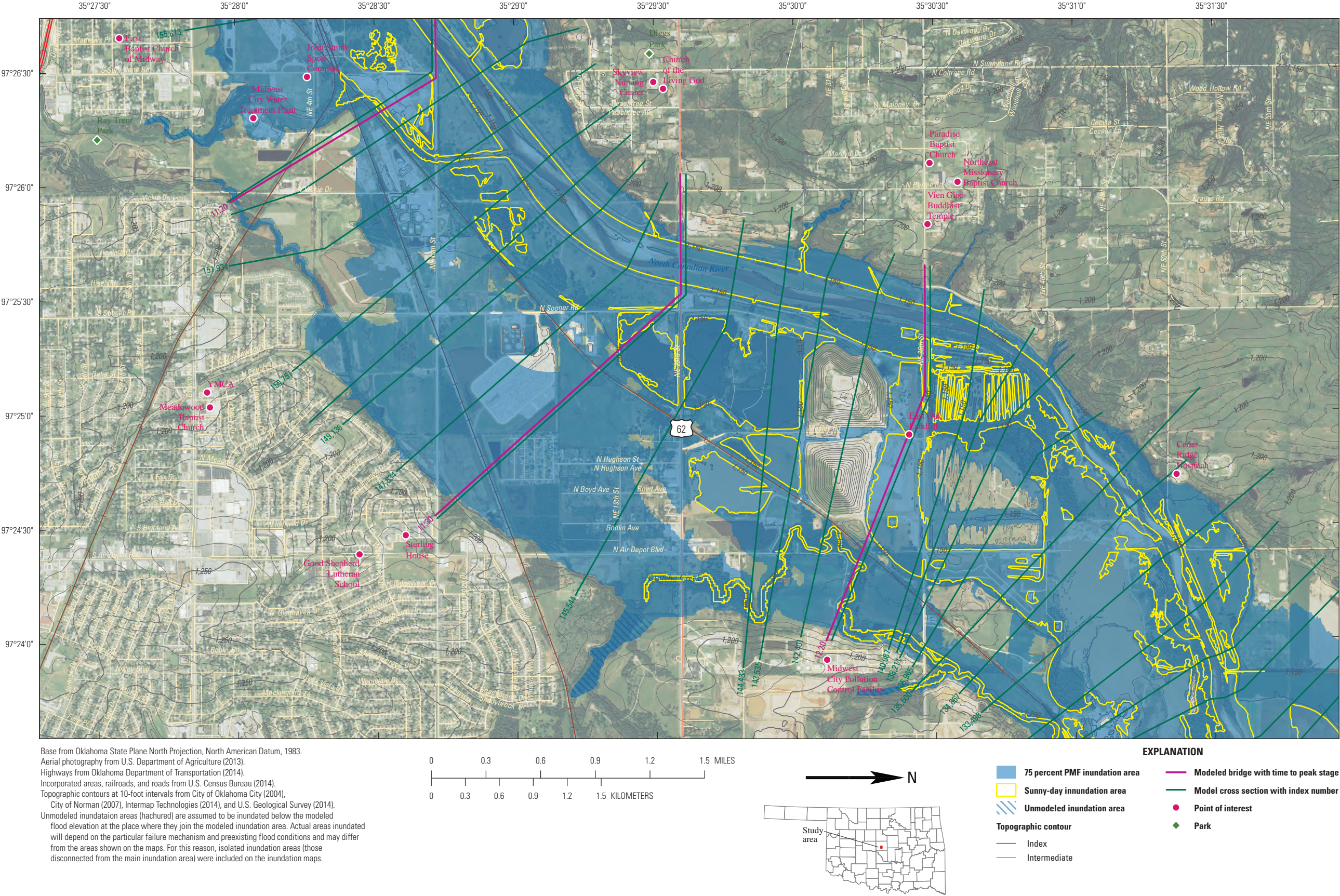
Appendix 6-3. Inundated areas for the 75-percent probable maximum flood (PMF) and sunny-day Lake Overholser dam-breach model scenarios and time to peak stage for the 75-percent probable maximum flood.





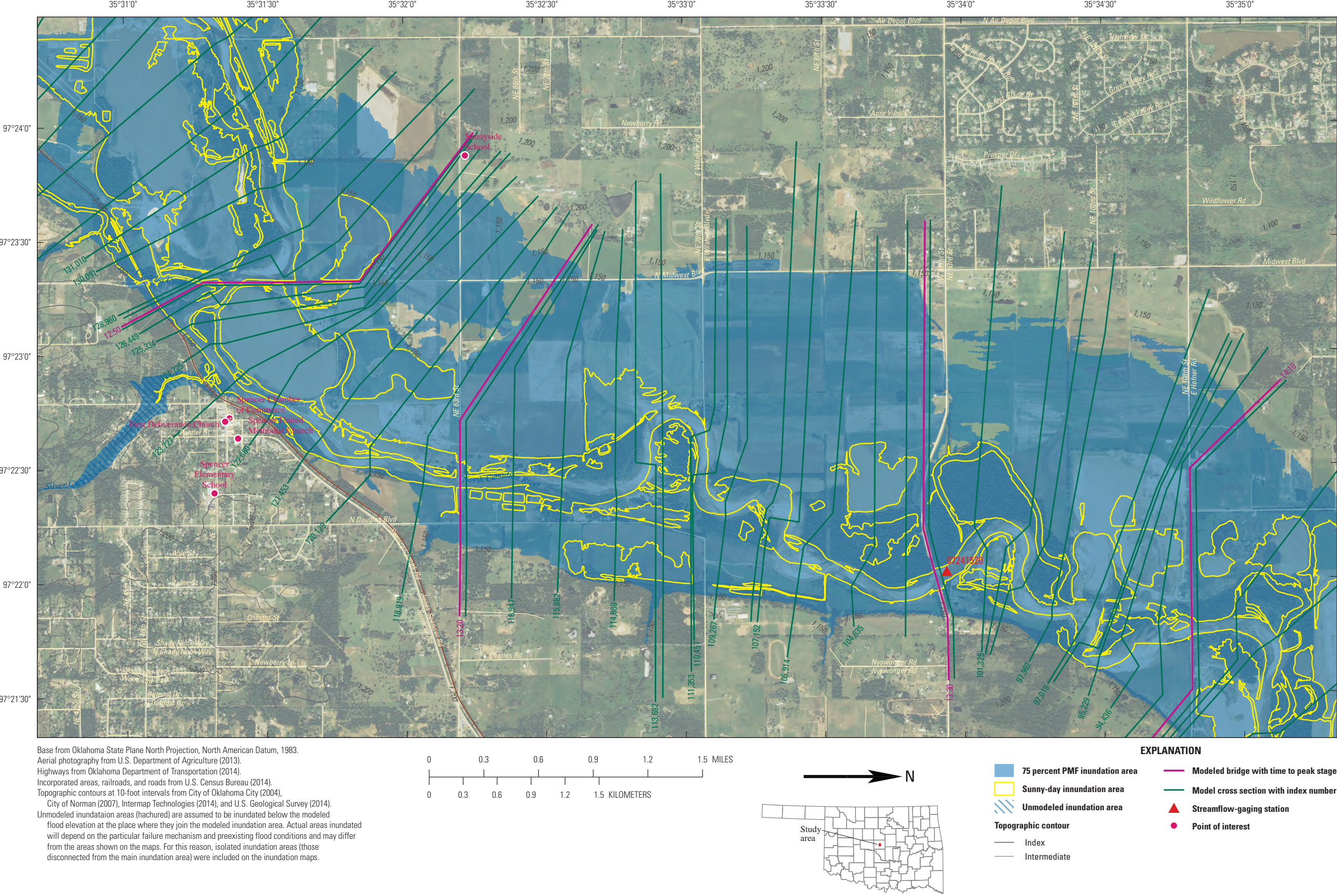
Appendix 6-4. Inundated areas for the 75-percent probable maximum flood (PMF) and sunny-day Lake Overholser dam-breach model scenarios and time to peak stage for the 75-percent probable maximum flood.





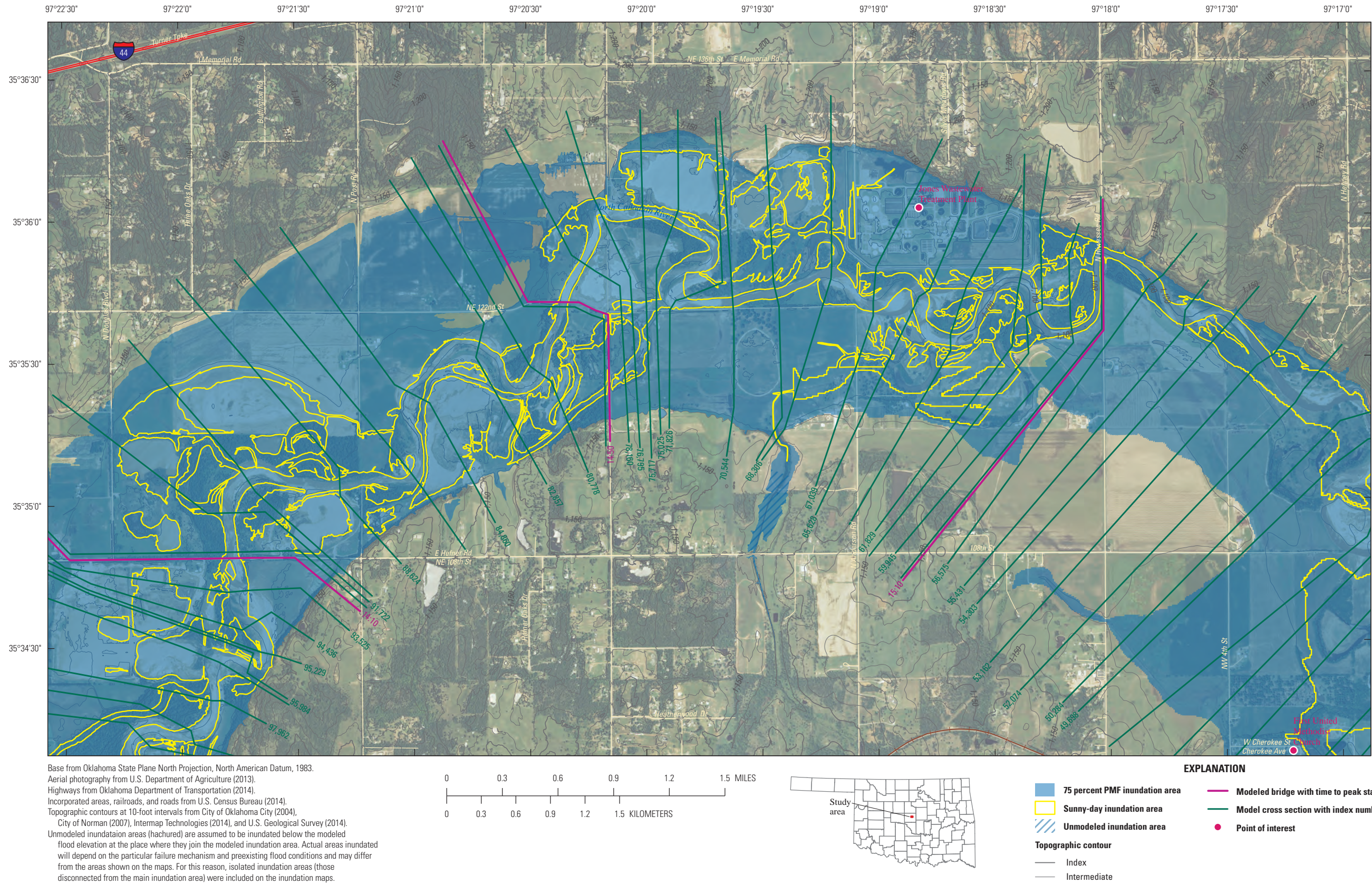
Appendix 6-5. Inundated areas for the 75-percent probable maximum flood (PMF) and sunny-day Lake Overholser dam-breach model scenarios and time to peak stage for the 75-percent probable maximum flood.





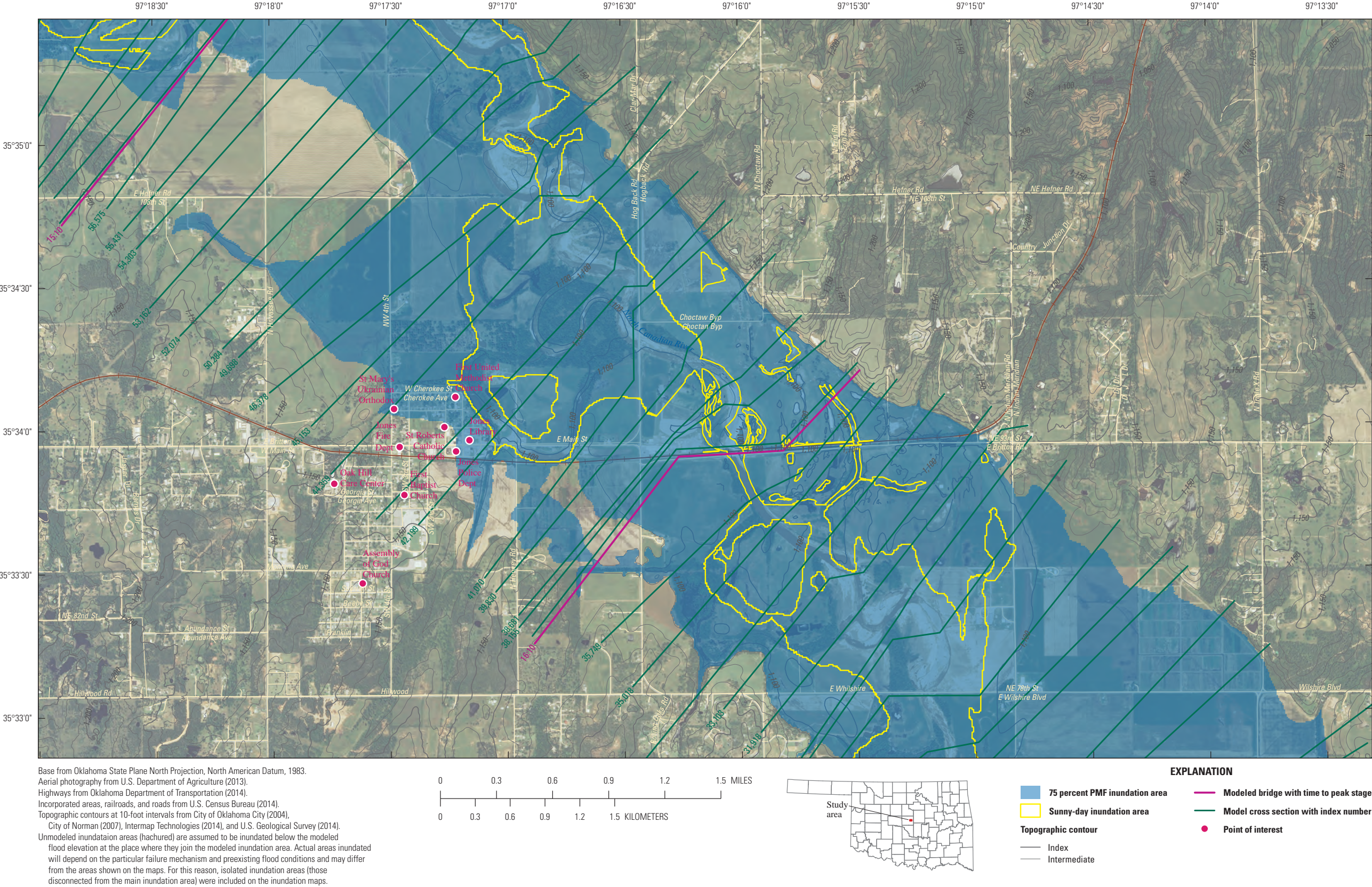
Appendix 6-6. Inundated areas for the 75-percent probable maximum flood (PMF) and sunny-day Lake Overholser dam-breach model scenarios and time to peak stage for the 75-percent probable maximum flood.





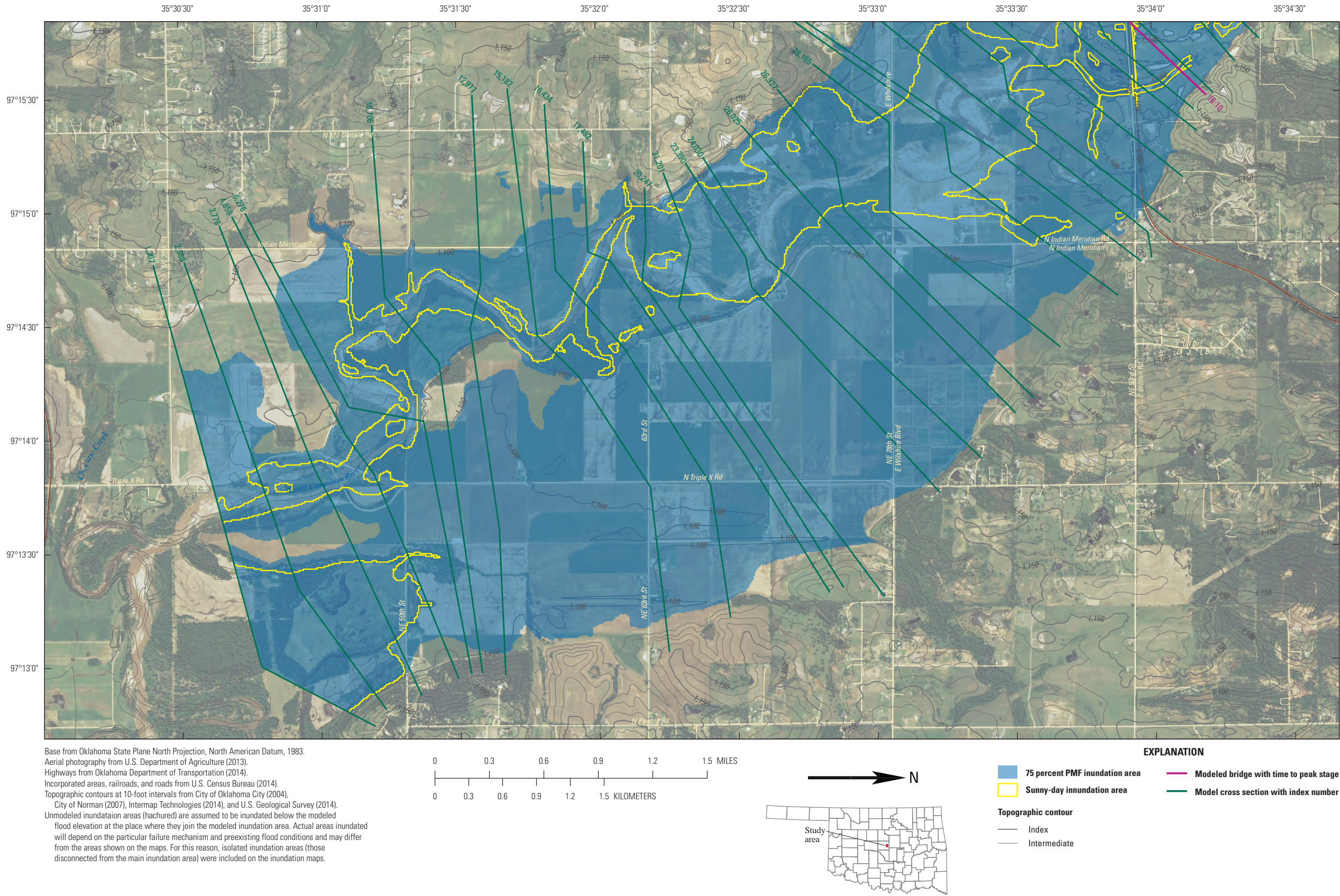
Appendix 6-7. Inundated areas for the 75-percent probable maximum flood (PMF) and sunny-day Lake Overholser dam-breach model scenarios and time to peak stage for the 75-percent probable maximum flood.





Appendix 6–8. Inundated areas for the 75-percent probable maximum flood (PMF) and sunny-day Lake Overholser dam-breach model scenarios and time to peak stage for the 75-percent probable maximum flood.





Appendix 6–9. Inundated areas for the 75-percent probable maximum flood (PMF) and sunny-day Lake Overholser dam-breach model scenarios and time to peak stage for the 75-percent probable maximum flood.