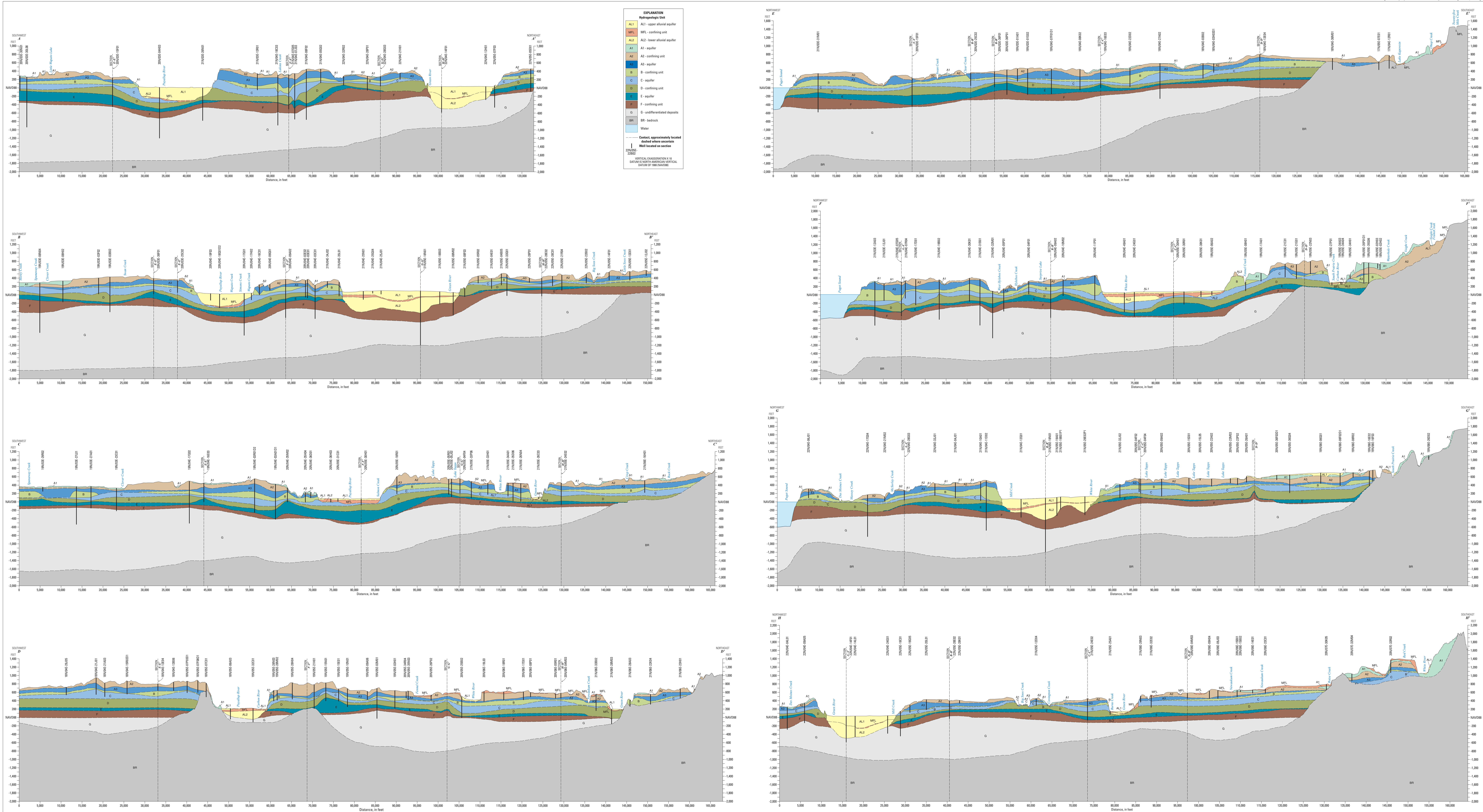


Welch, W.D., Johnson, K.H., Swartz, M.E., Lane, K.C., Jones, E.J., Santolucito, A.S., Marshall, C., Collins, B.G., and Andrews, E.A., 2015, Hydrogeologic framework, groundwater resources, and water budget in the Puyallup River Watershed and vicinity, Pierce and King Counties, Washington.



Hydrogeologic Sections, Puyallup River Watershed and Vicinity, Pierce and King Counties, Washington

By  
Wendy Welch  
2015