





**Figure A1-1. Study site BK-01 (See table 1 and fig. 2 for study site information)**

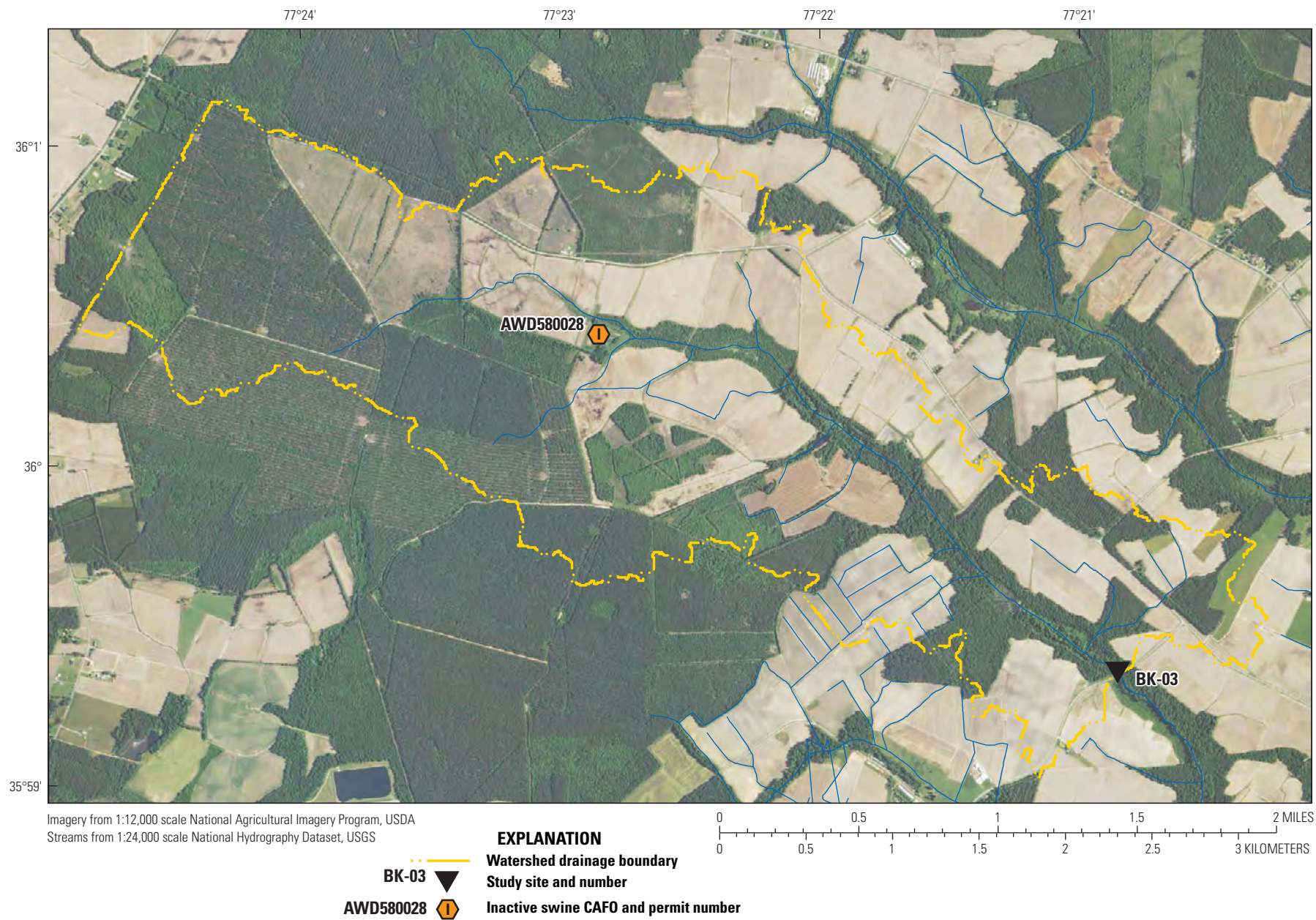




EXPLANATION	
<span style="color: yellow;">---</span>	Watershed drainage boundary
BK-02 	Study site and number
AWD580043 	Inactive swine CAFO and permit number

**Figure A1-2. Study site BK-02 (See table 1 and fig. 2 for study site information)**





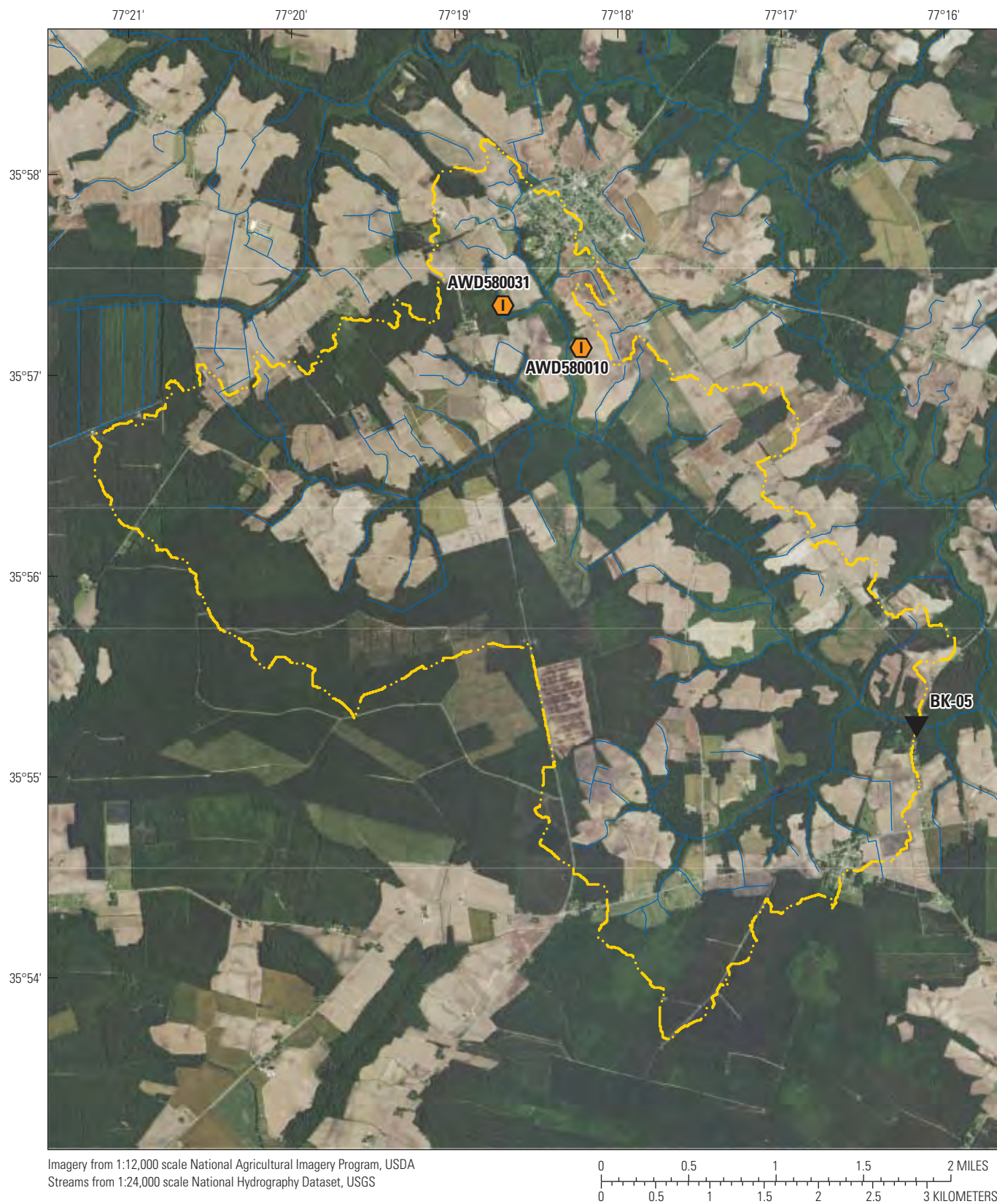
**Figure A1-3. Study site BK-03 (See table 1 and fig. 2 for study site information)**





**Figure A1-4. Study site BK-04 (See table 1 and fig. 2 for study site information)**





**Figure A1-5. Study site BK-05 (See table 1 and fig. 2 for study site information)**





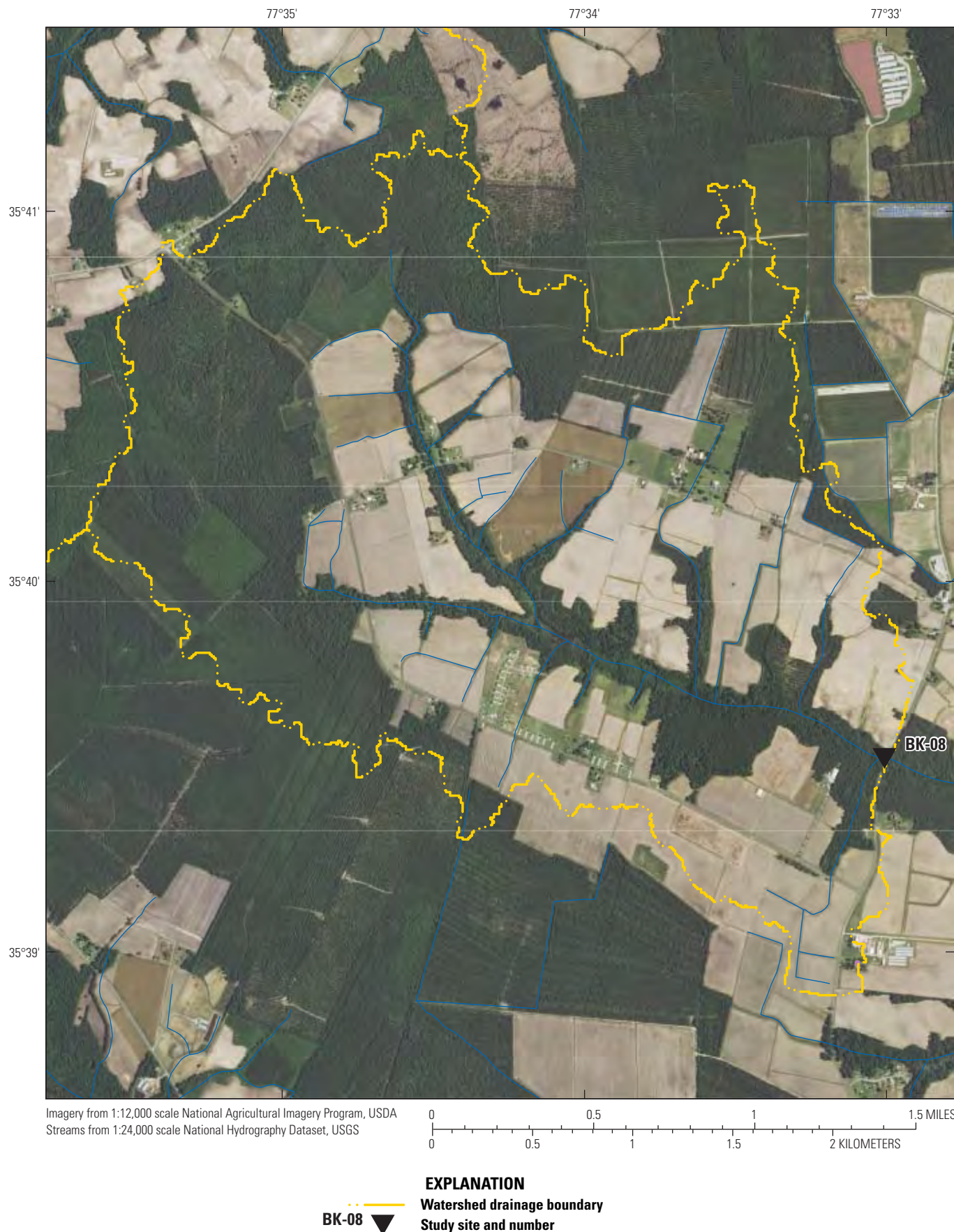
**Figure A1-6. Study site BK-06 (See table 1 and fig. 2 for study site information)**





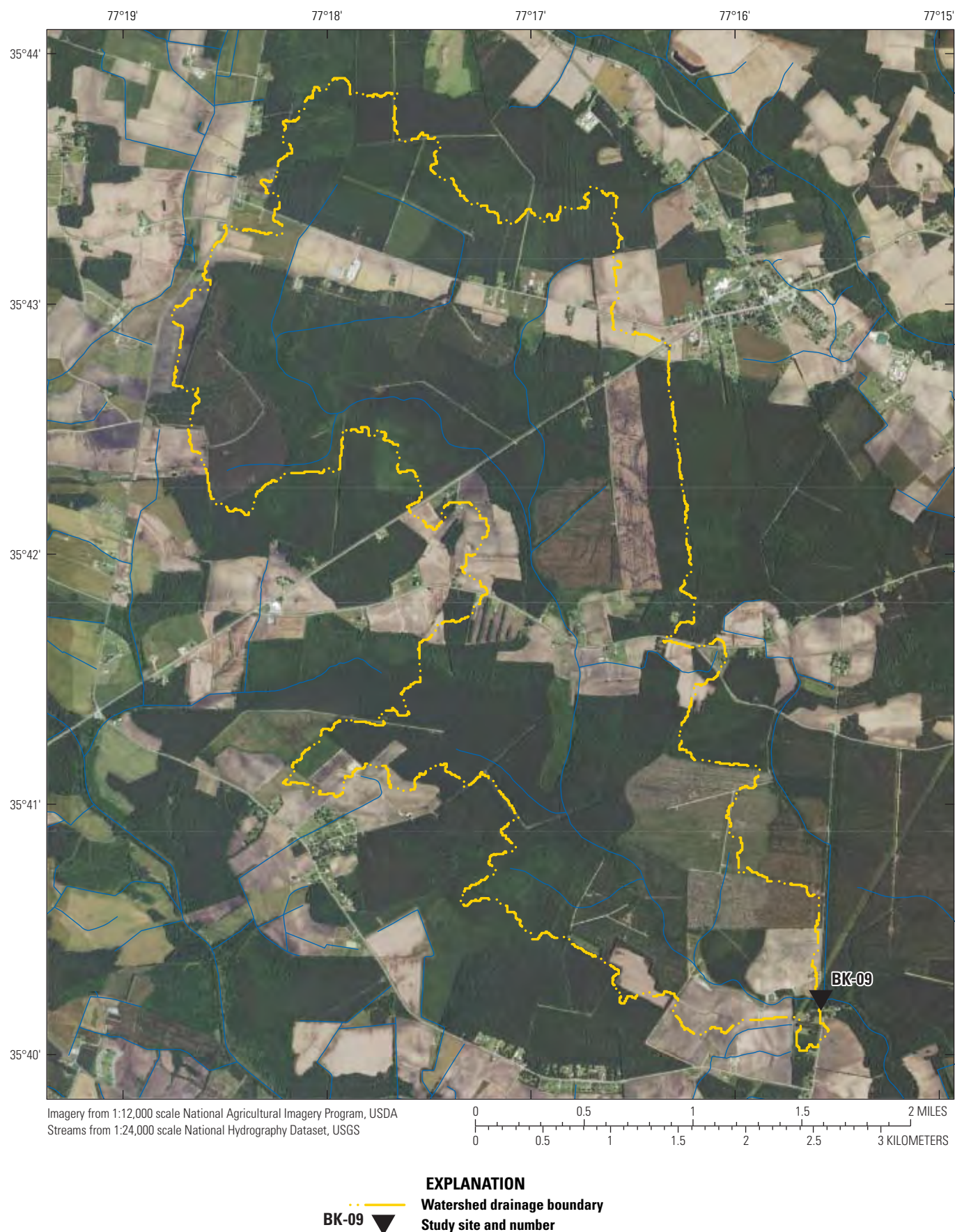
**Figure A1-7. Study site BK-07 (See table 1 and fig. 2 for study site information)**





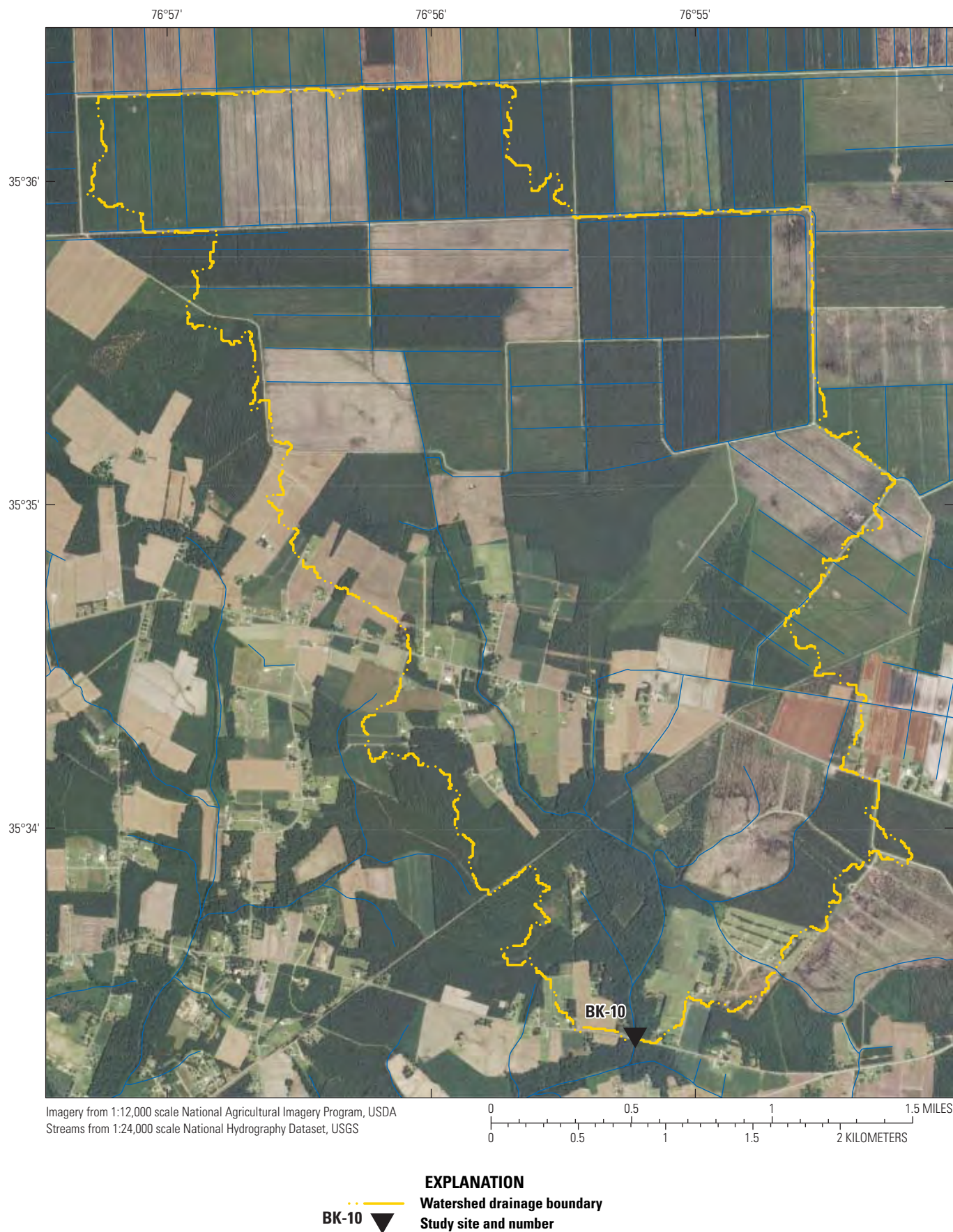
**Figure A1-8. Study site BK-08 (See table 1 and fig. 2 for study site information)**





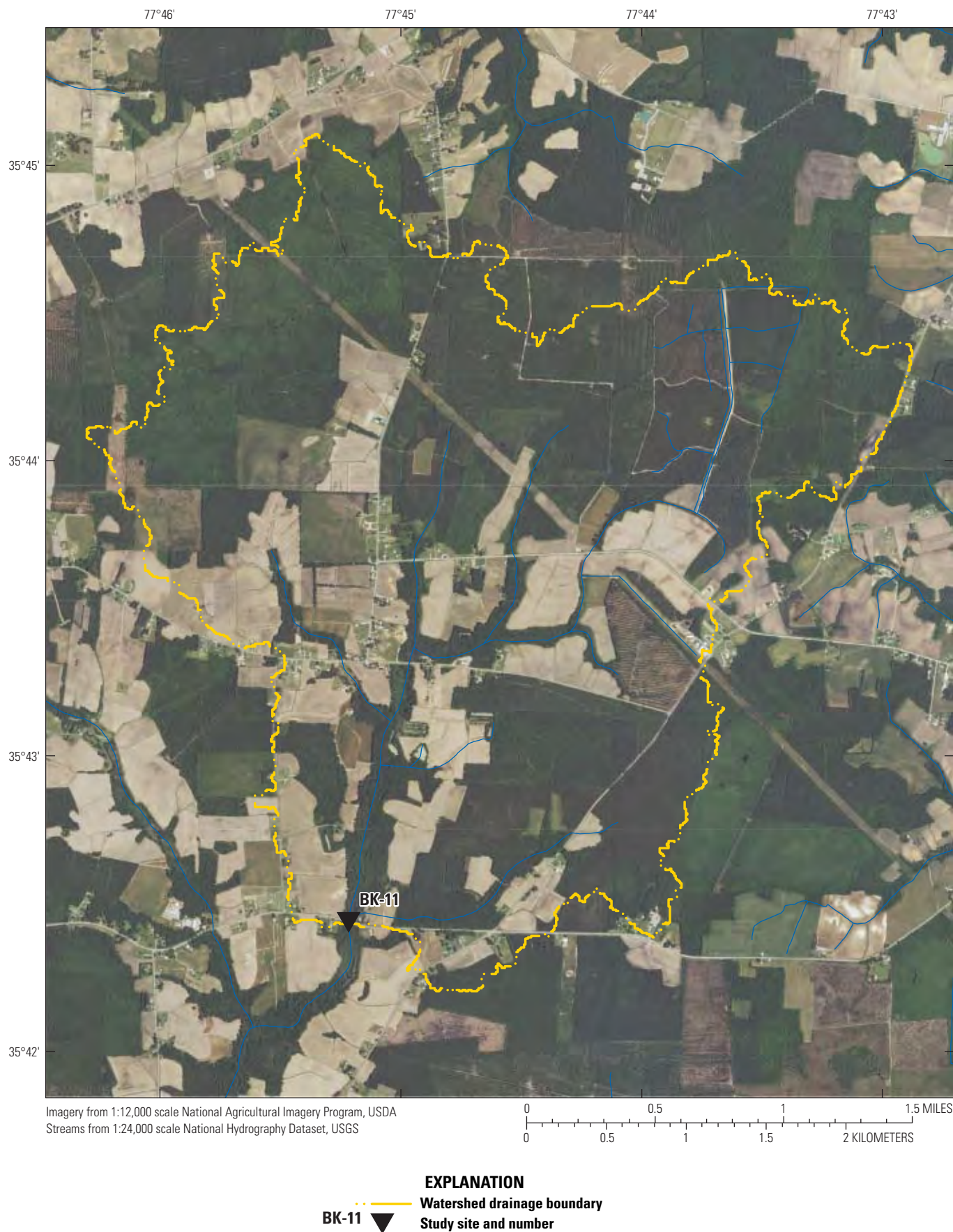
**Figure A1-9. Study site BK-09 (See table 1 and fig. 2 for study site information)**





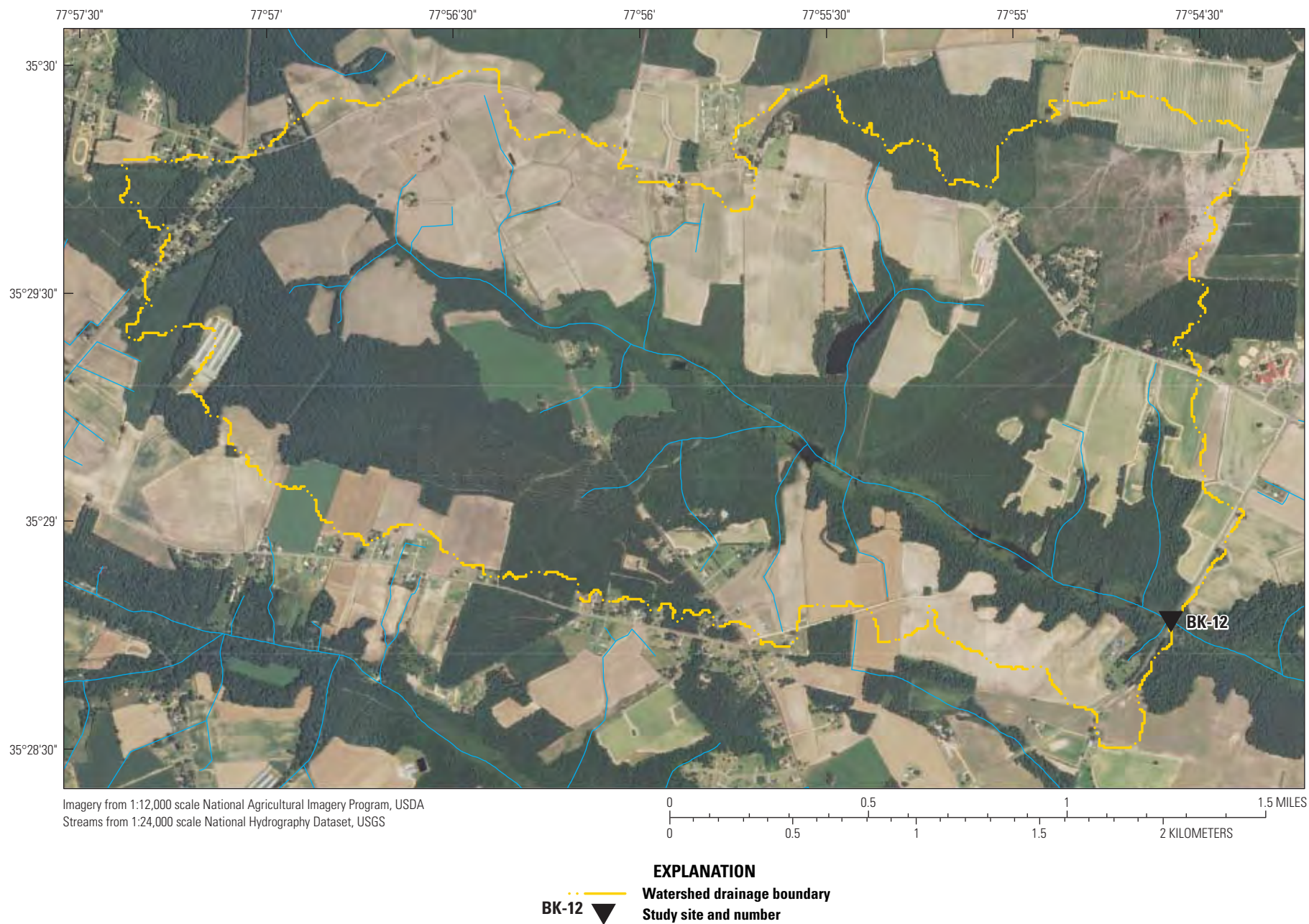
**Figure A1-10. Study site BK-10 (See table 1 and fig. 2 for study site information)**





**Figure A1-11. Study site BK-11 (See table 1 and fig. 2 for study site information)**





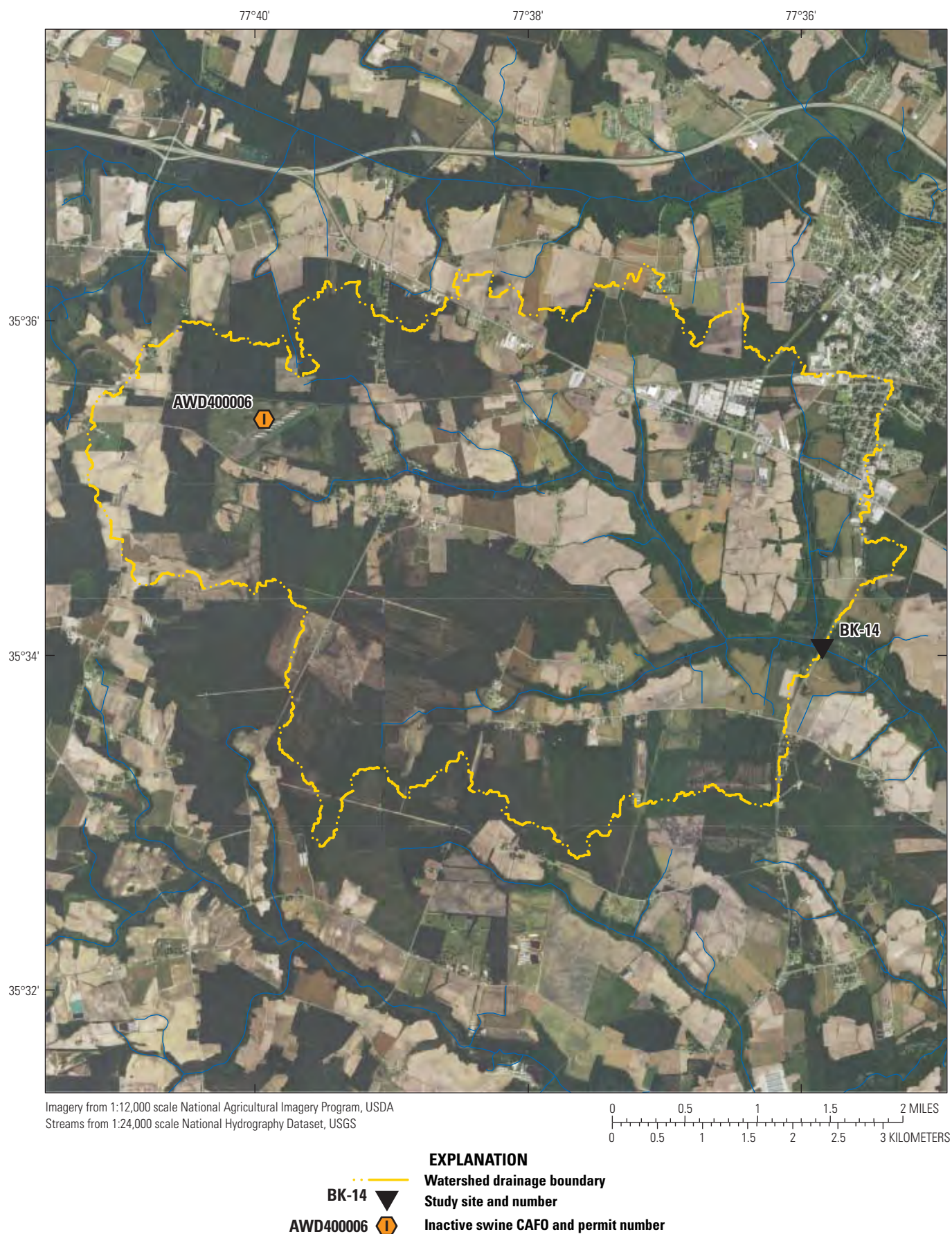
**Figure A1-12. Study site BK-12 (See table 1 and fig. 2 for study site information)**





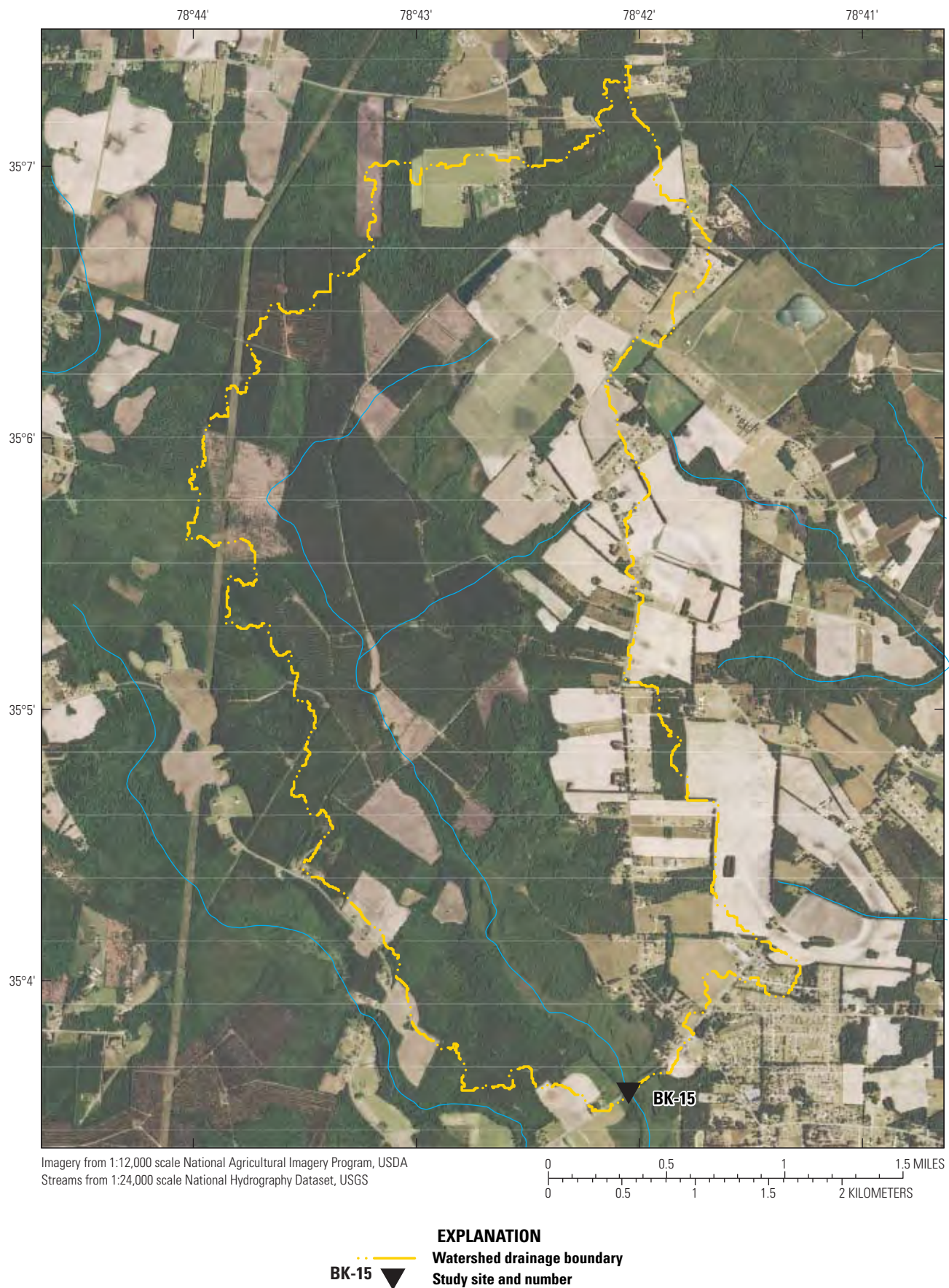
**Figure A1-13. Study site BK-13 (See table 1 and fig. 2 for study site information)**





**Figure A1-14. Study site BK-14 (See table 1 and fig. 2 for study site information)**





**Figure A1-15. Study site BK-15 (See table 1 and fig. 2 for study site information)**





**Figure A1-16. Study site BK-16 (See table 1 and fig. 2 for study site information)**





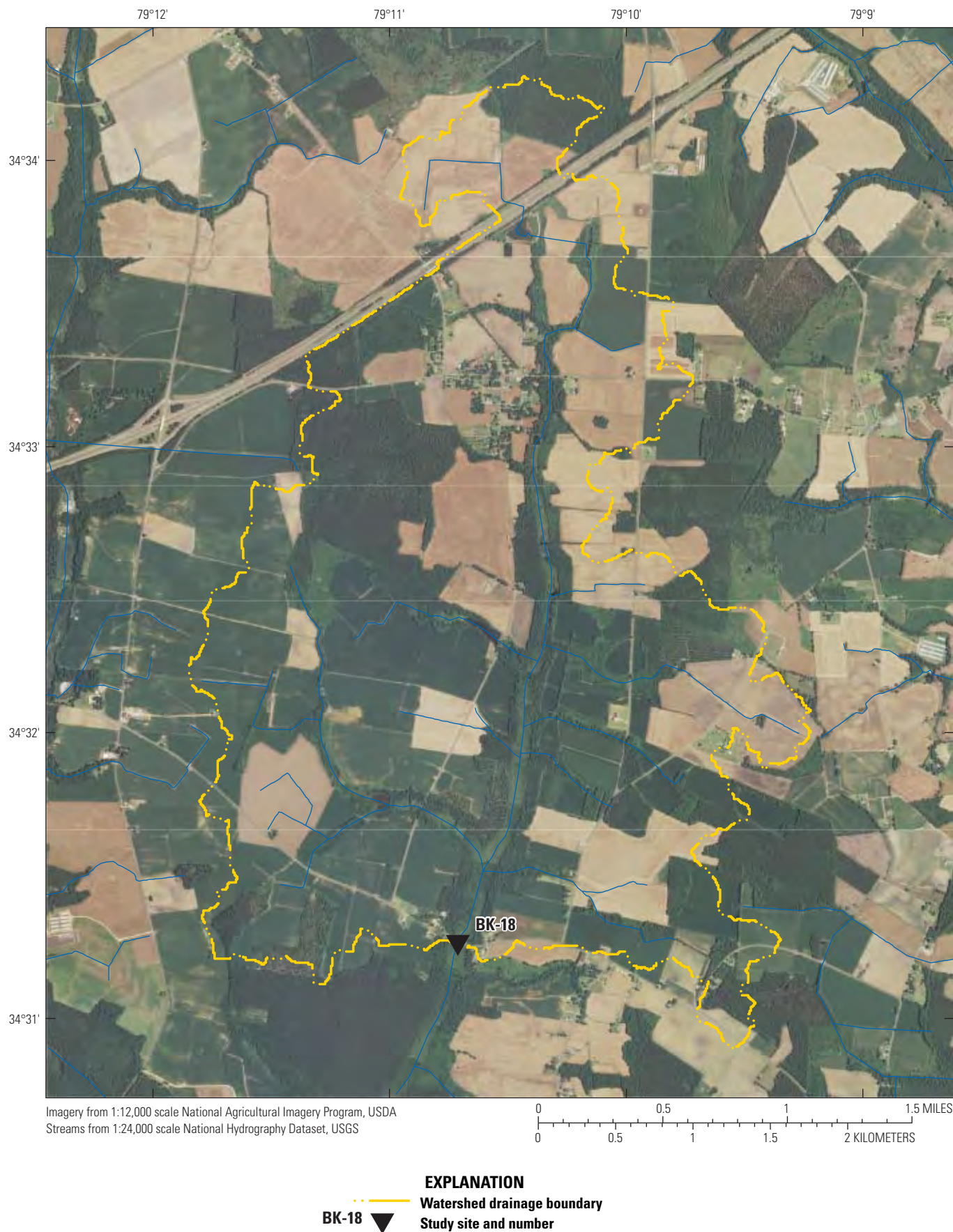
**EXPLANATION**

--- Watershed drainage boundary

**BK-17** Study site and number

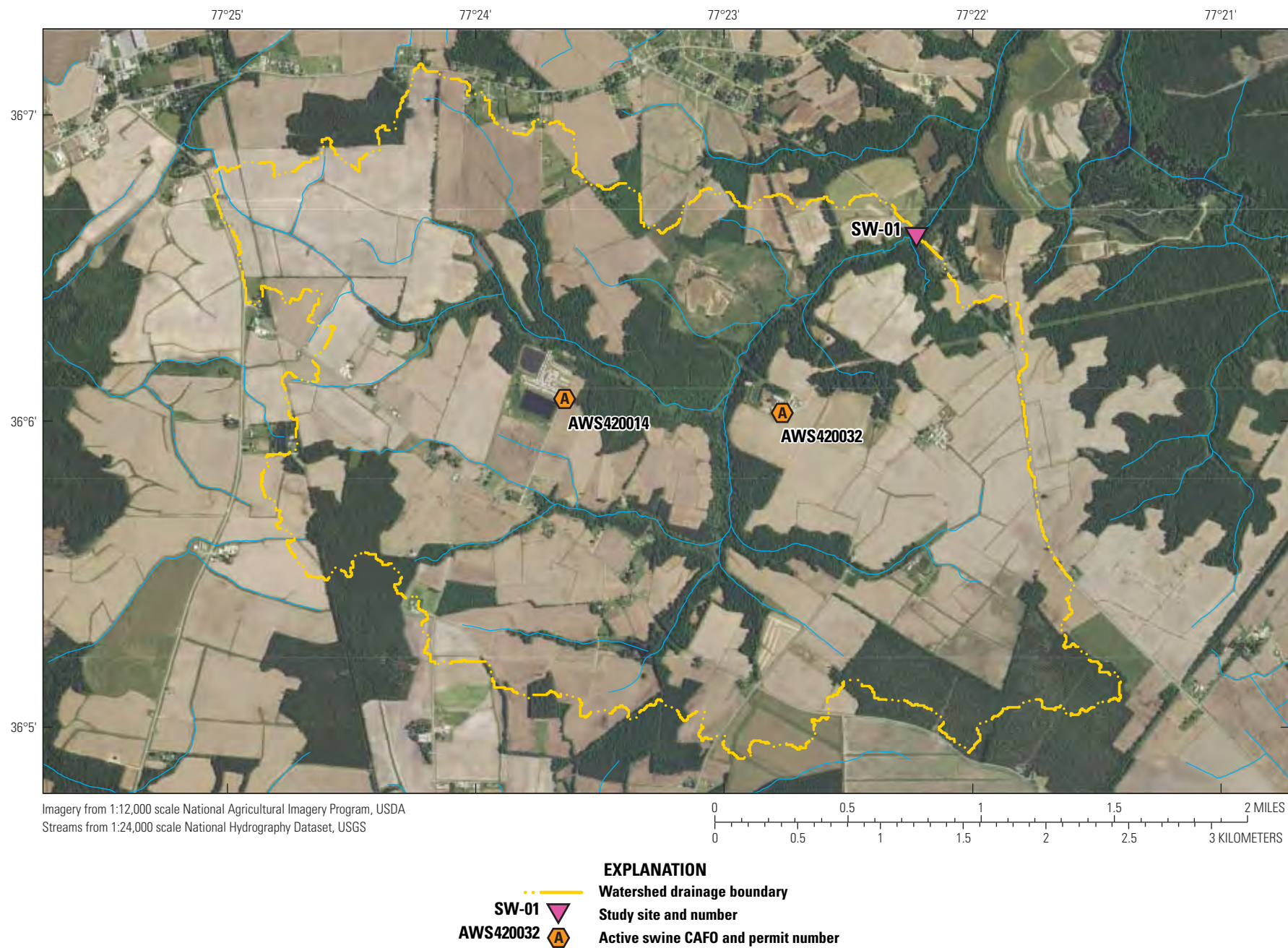
**Figure A1-17. Study site BK-17 (See table 1 and fig. 2 for study site information)**





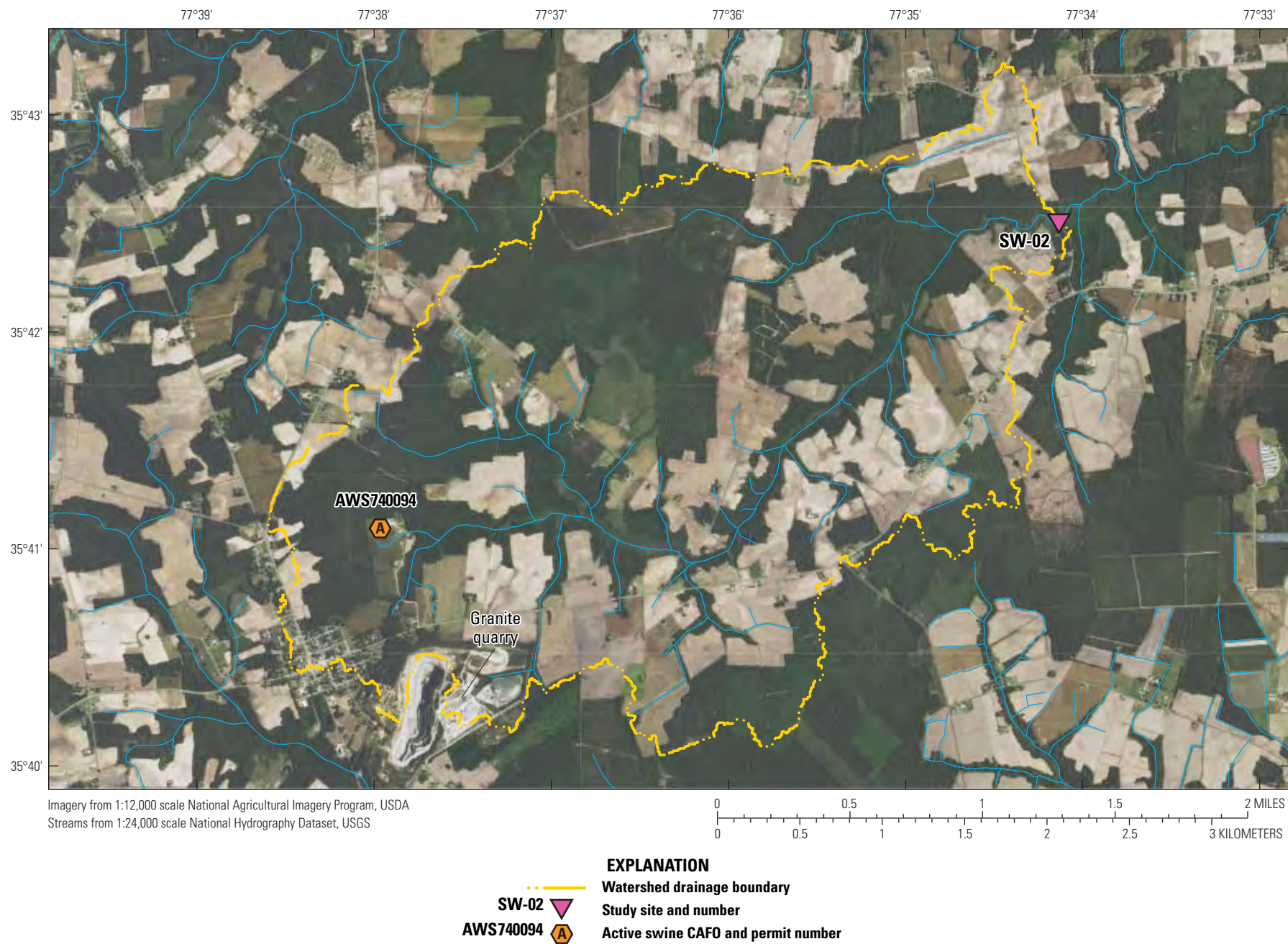
**Figure A1-18. Study site BK-18 (See table 1 and fig. 2 for study site information)**





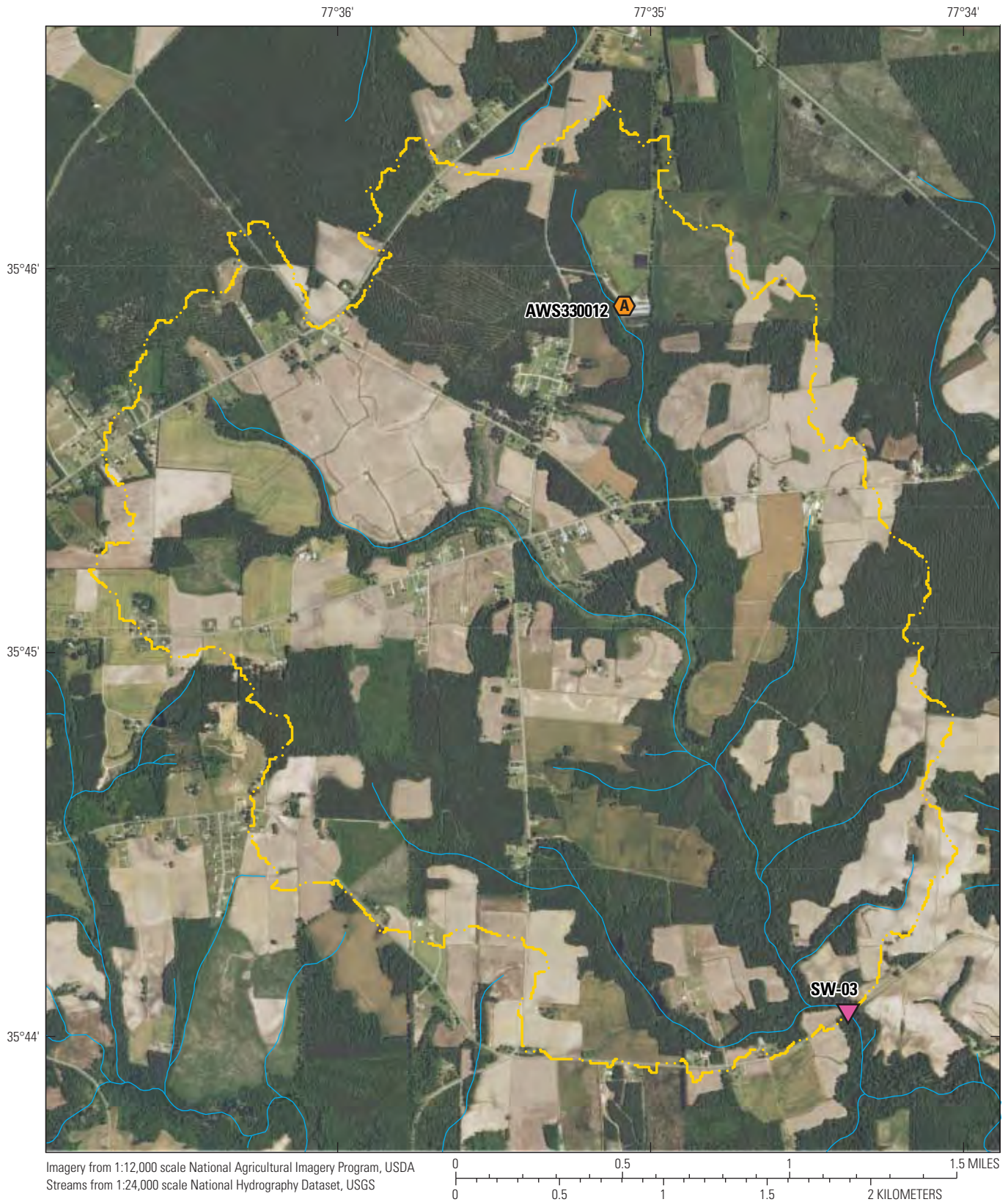
**Figure A1-19. Study site SW-01 (See table 1 and fig. 2 for study site information)**





**Figure A1-20. Study site SW-02 (See table 1 and fig. 2 for study site information)**





EXPLANATION	
---	Watershed drainage boundary
SW-03	Study site and number
AWS330012	Active swine CAFO and permit number

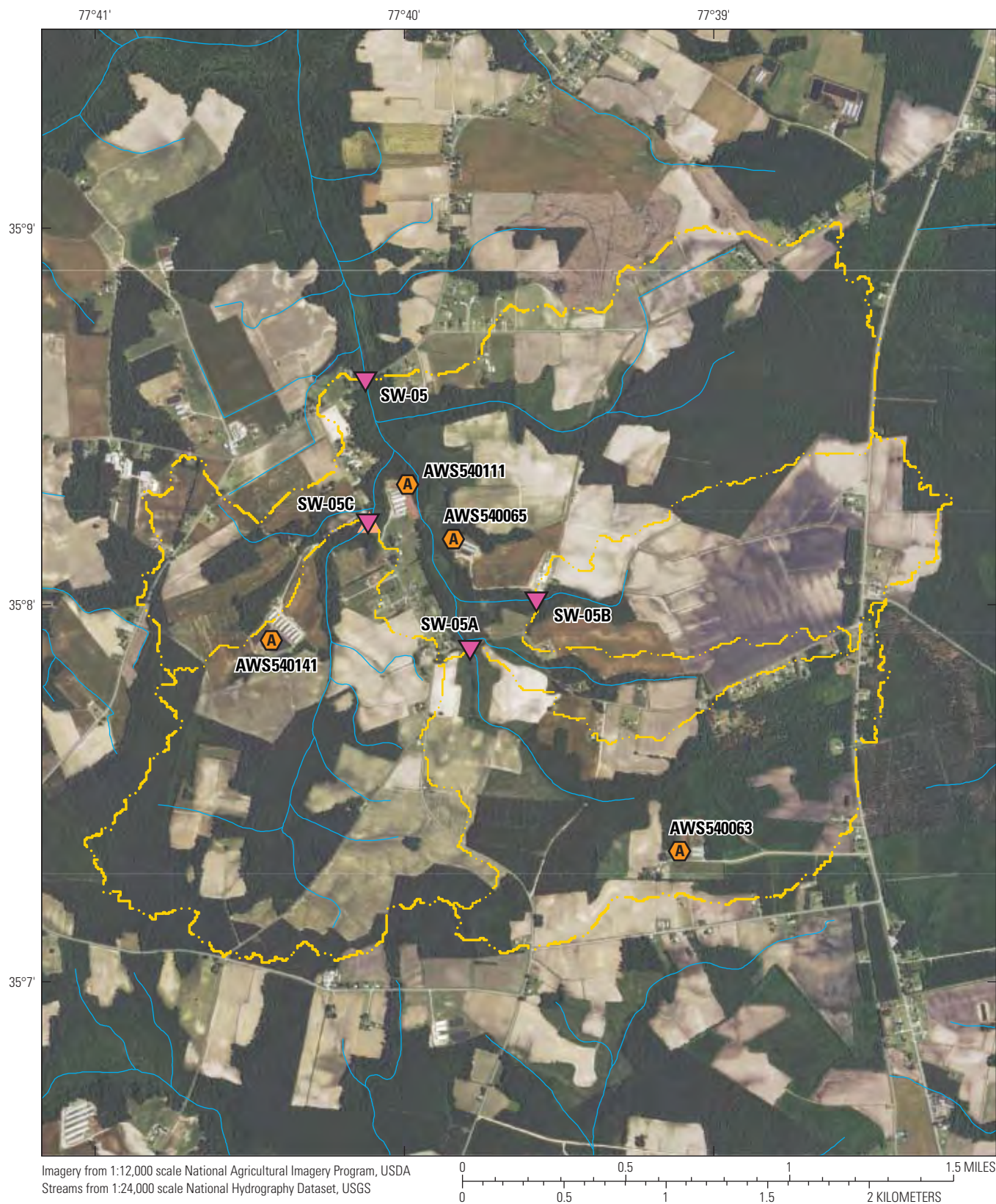
**Figure A1-21. Study site SW-03 (See table 1 and fig. 2 for study site information)**





**Figure A1-22. Study sites SW-04, SW-04A, and SW-04B (See table 1 and fig. 2 for study site information)**





- EXPLANATION**
- Watershed drainage boundary
  - Secondary watershed drainage boundary
  - SW-05 Study site and number
  - AWS540063 Active swine CAFO and permit number

**Figure A1-23. Study sites SW-05, SW-05A, SW-05B, and SW-05C (See table 1 and fig. 2 for study site information)**





EXPLANATION	
---	Watershed drainage boundary
SW-06	Study site and number
AWS070007	Active swine CAFO and permit number

**Figure A1-24. Study site SW-06 (See table 1 and fig. 2 for study site information)**





#### EXPLANATION

- |           |   |
|-----------|---|
| ---       | Watershed drainage boundary                               |
| SW-07     | Study site and number                                     |
| AWS980041 | Active swine CAFO and permit number                       |
| WQ0001896 | Non-discharge residual application site and permit number |

**Figure A1-25. Study site SW-07 (See table 1 and fig. 2 for study site information)**



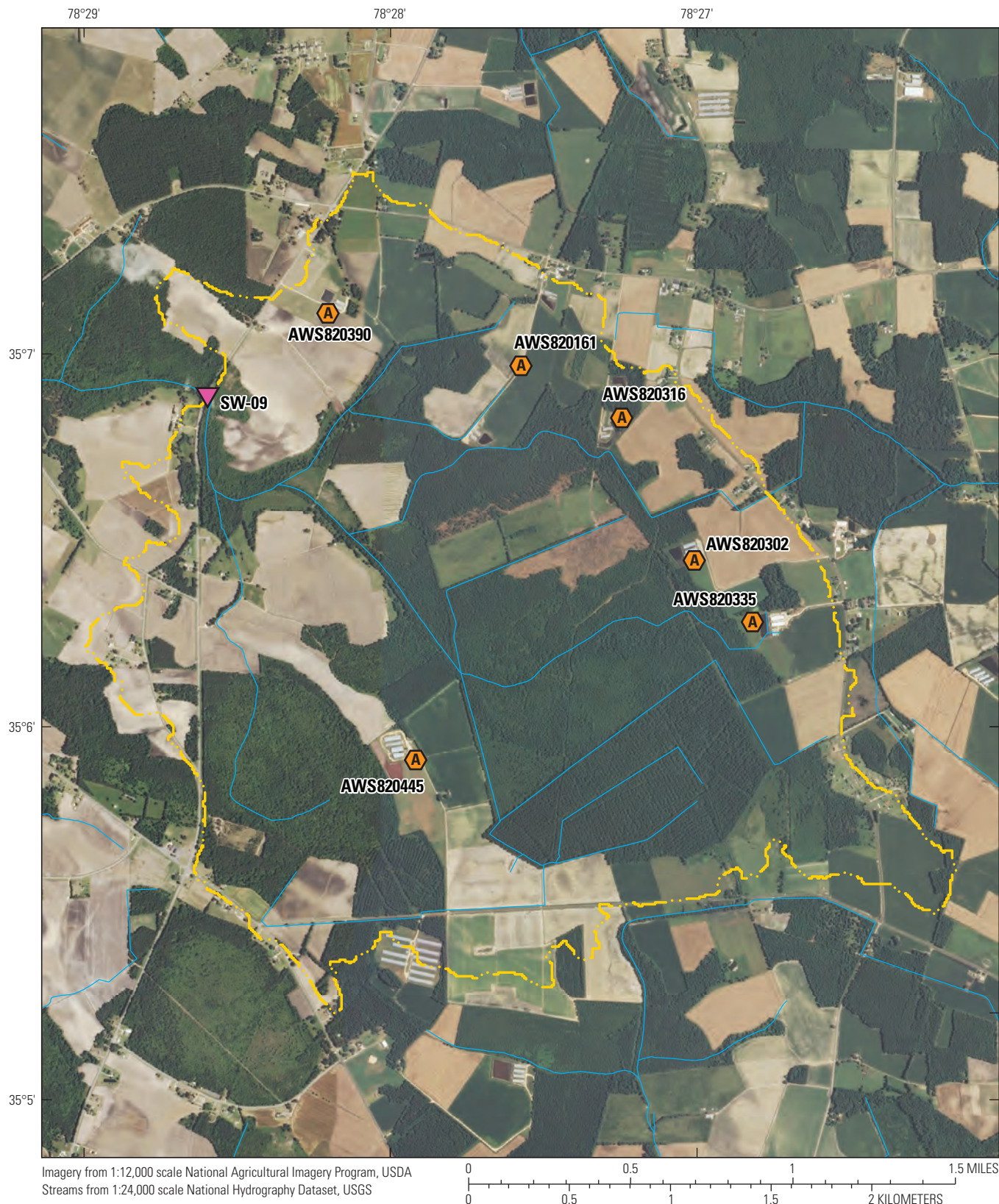


#### EXPLANATION

- Watershed drainage boundary
- Secondary watershed drainage boundary
- SW-08 Study site and number
- AWS400092 Active swine CAFO and permit number
- AWD400090 Inactive swine CAFO and permit number

**Figure A1-26. Study sites SW-08, SW-08A, SW-08B, SW-08C, and SW-08D (See table 1 and fig. 2 for study site information)**

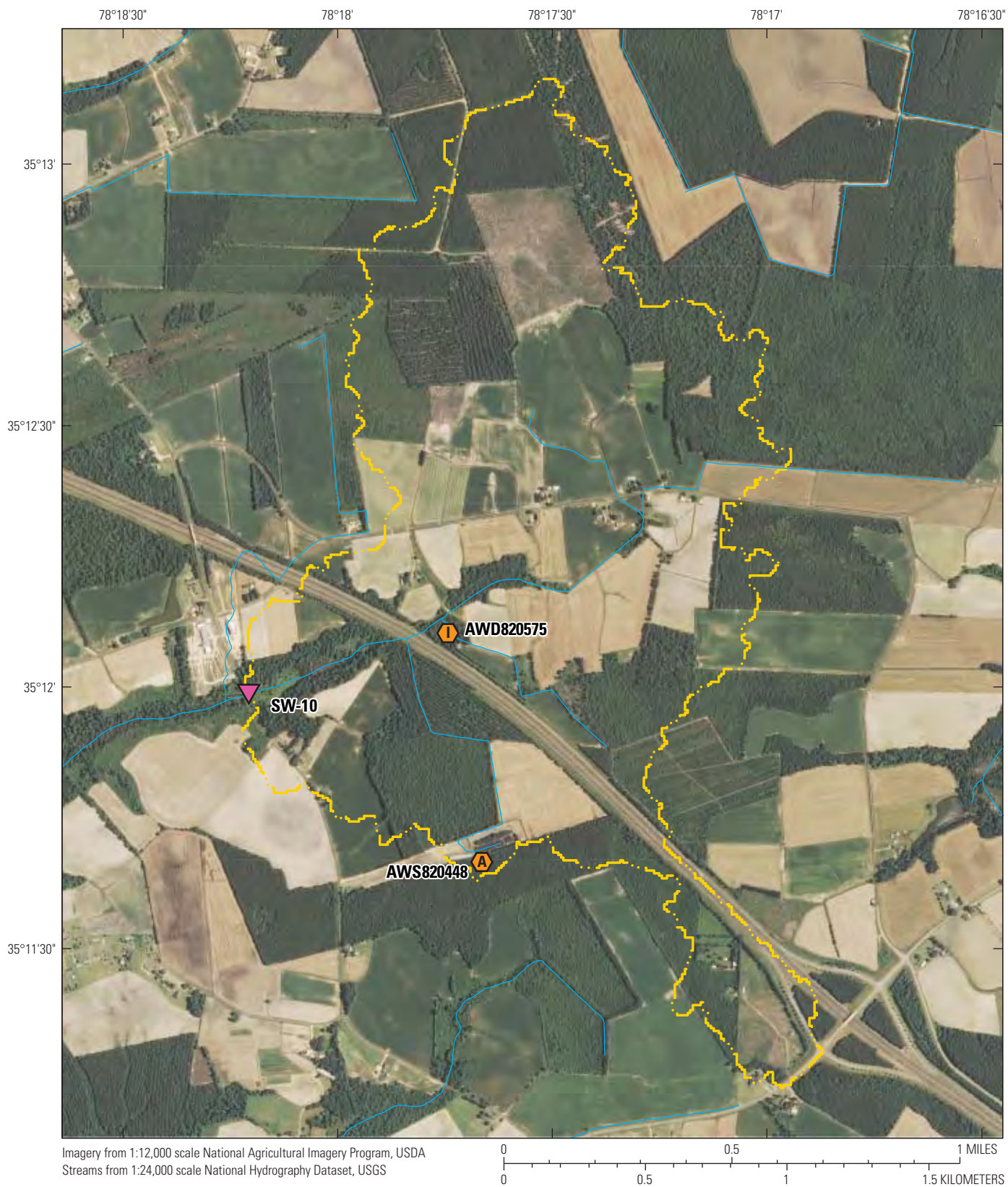




EXPLANATION	
---	Watershed drainage boundary
SW-09	Study site and number
AWS820445	Active swine CAFO and permit number

**Figure A1-27. Study site SW-09 (See table 1 and fig. 2 for study site information)**



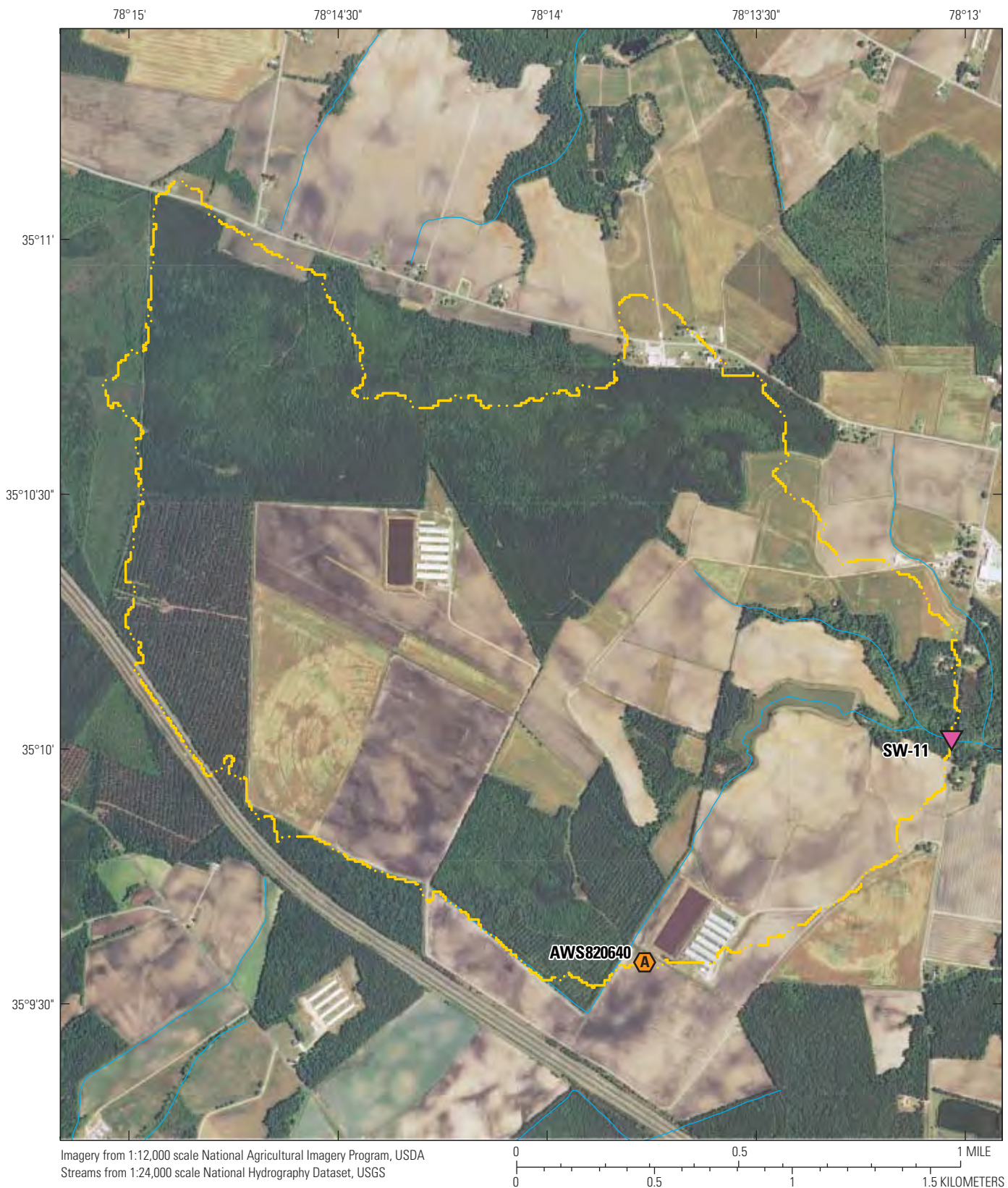


#### EXPLANATION

- Watershed drainage boundary
- SW-10 Study site and number
- AWS820448 Active swine CAFO and permit number
- AWD820575 Inactive swine CAFO and permit number

**Figure A1-28. Study site SW-10 (See table 1 and fig. 2 for study site information)**





**Figure A1-29. Study site SW-11 (See table 1 and fig. 2 for study site information)**





- EXPLANATION**
- Watershed drainage boundary
  - SW-12 Study site and number
  - AWS310051 Active swine CAFO and permit number

**Figure A1-30. Study site SW-12 (See table 1 and fig. 2 for study site information)**





**Figure A1-31. Study site SW-13, SW-13A, and SW-13B (See table 1 and fig. 2 for study site information)**








**Figure A1-32. Study site SW-14 (See table 1 and fig. 2 for study site information)**





EXPLANATION	
	Watershed drainage boundary
 SW-15	Study site and number
 AWS780076	Active swine CAFO and permit number

**Figure A1-33. Study site SW-15 (See table 1 and fig. 2 for study site information)**

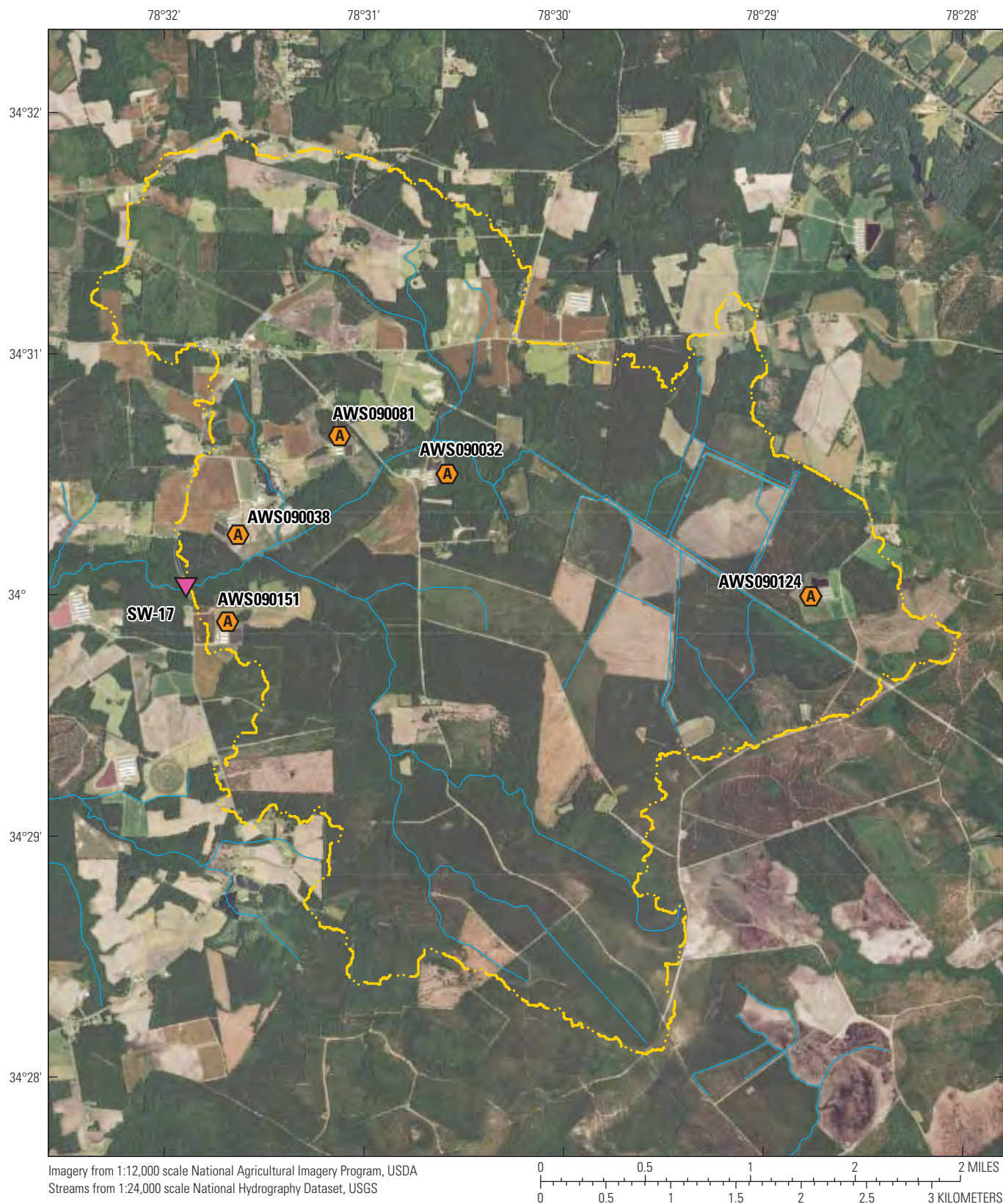




EXPLANATION	
.....	Watershed drainage boundary
SW-16	Study site and number
AWS90075	Active swine CAFO and permit number

**Figure A1-34. Study site SW-16 (See table 1 and fig. 2 for study site information)**







#### EXPLANATION

- Watershed drainage boundary
- ▼ Study site and number
- ⬡ Active swine CAFO and permit number

**Figure A1-35. Study site SW-17 (See table 1 and fig. 2 for study site information)**

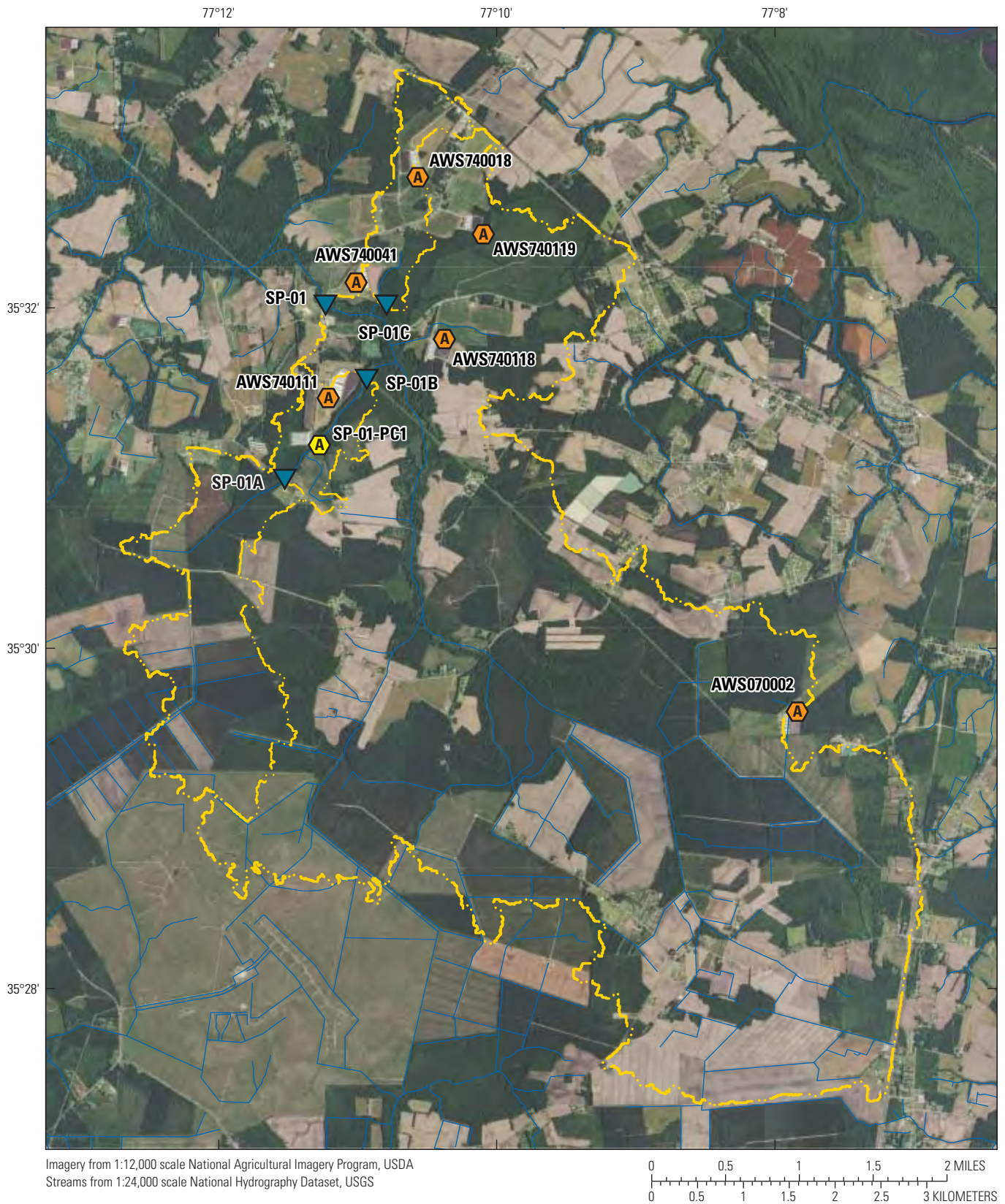




EXPLANATION	
<span style="color: yellow;">---</span>	Watershed drainage boundary
SW-18 	Study site and number
AWS090036 	Active swine CAFO and permit number

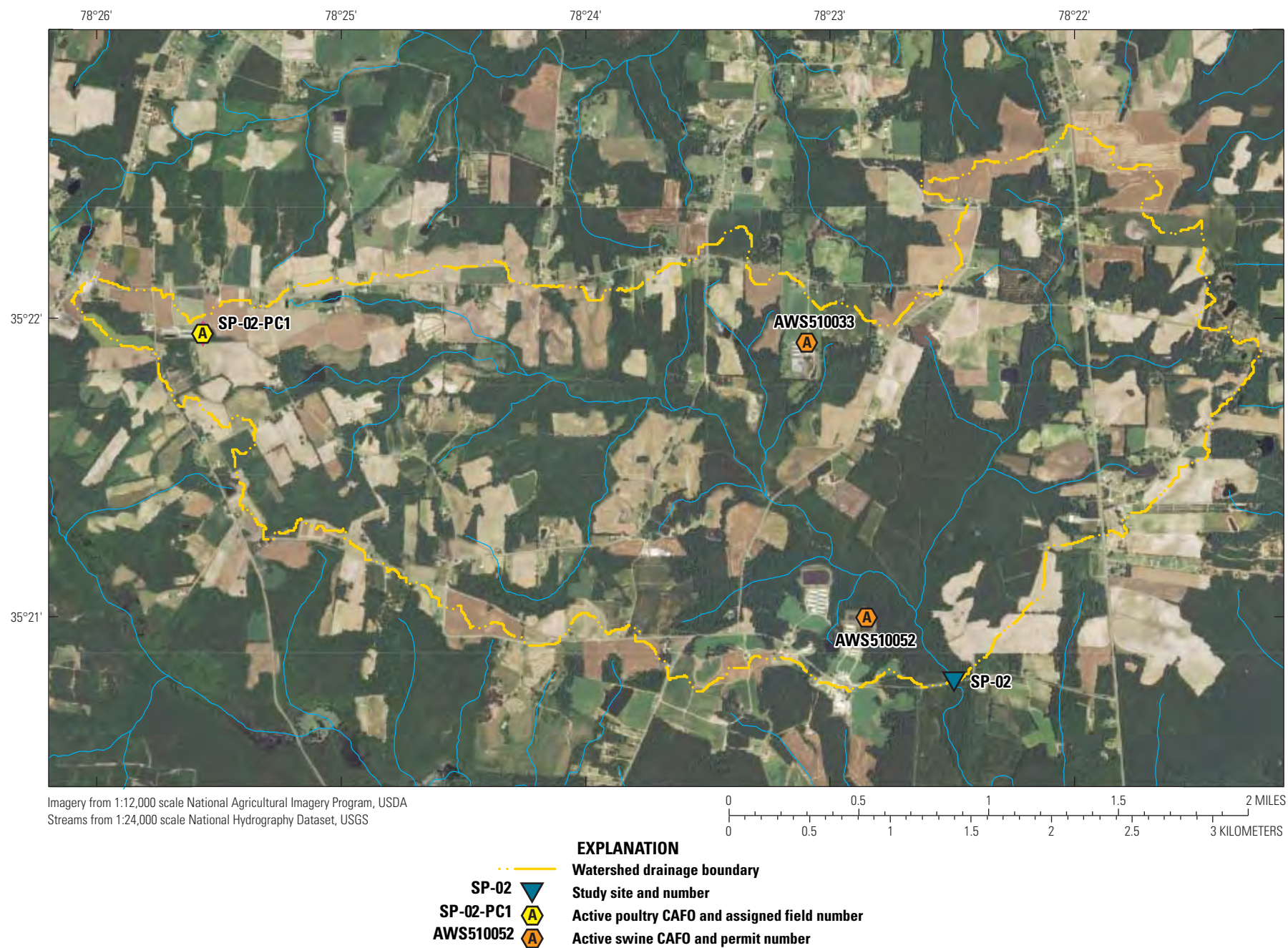
**Figure A1-36. Study site SW-18 (See table 1 and fig. 2 for study site information)**





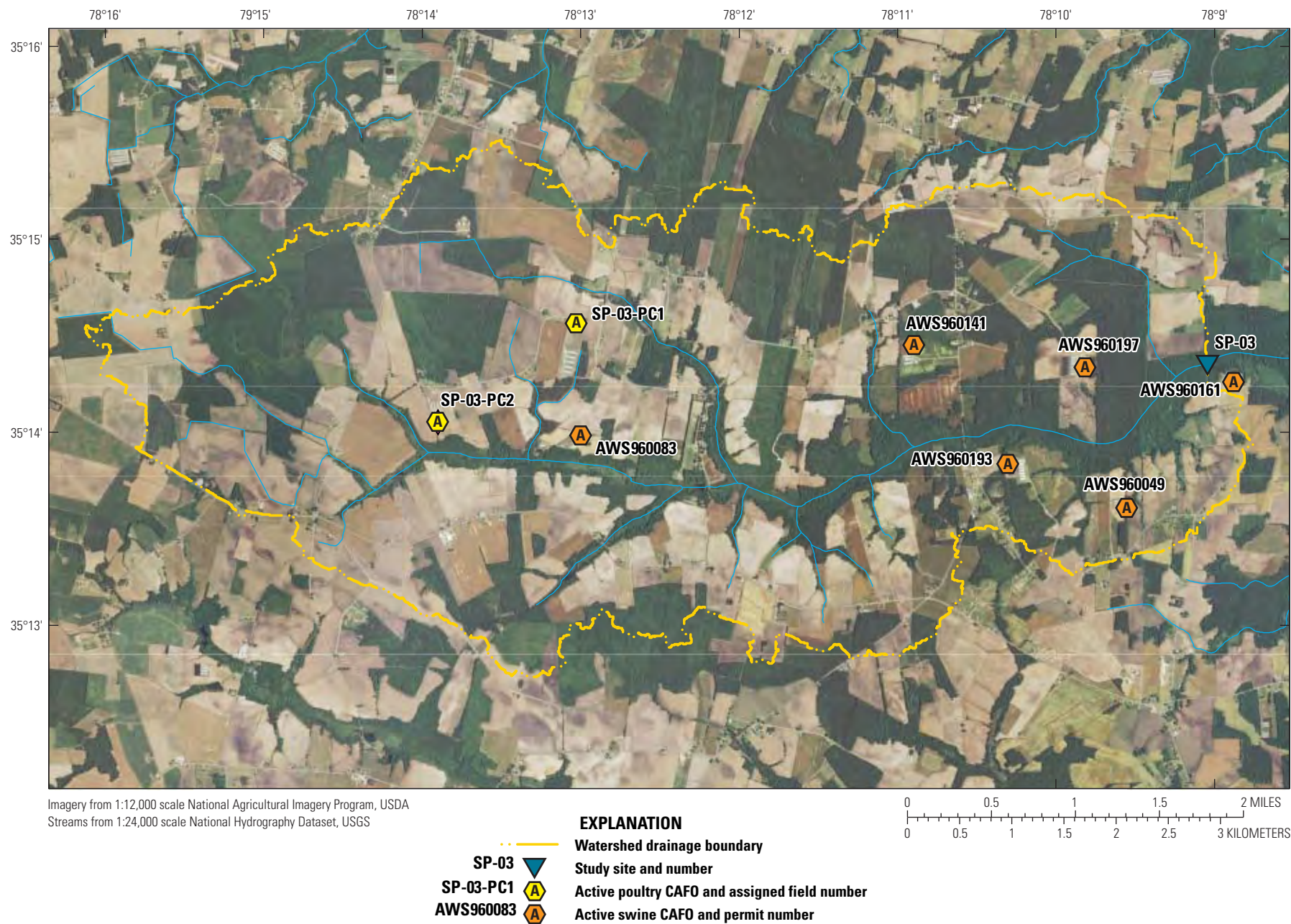
**Figure A1-37. Study sites SP-01, SP-01A, SP-01B, and SP-01C (See table 1 and fig. 2 for study site information)**





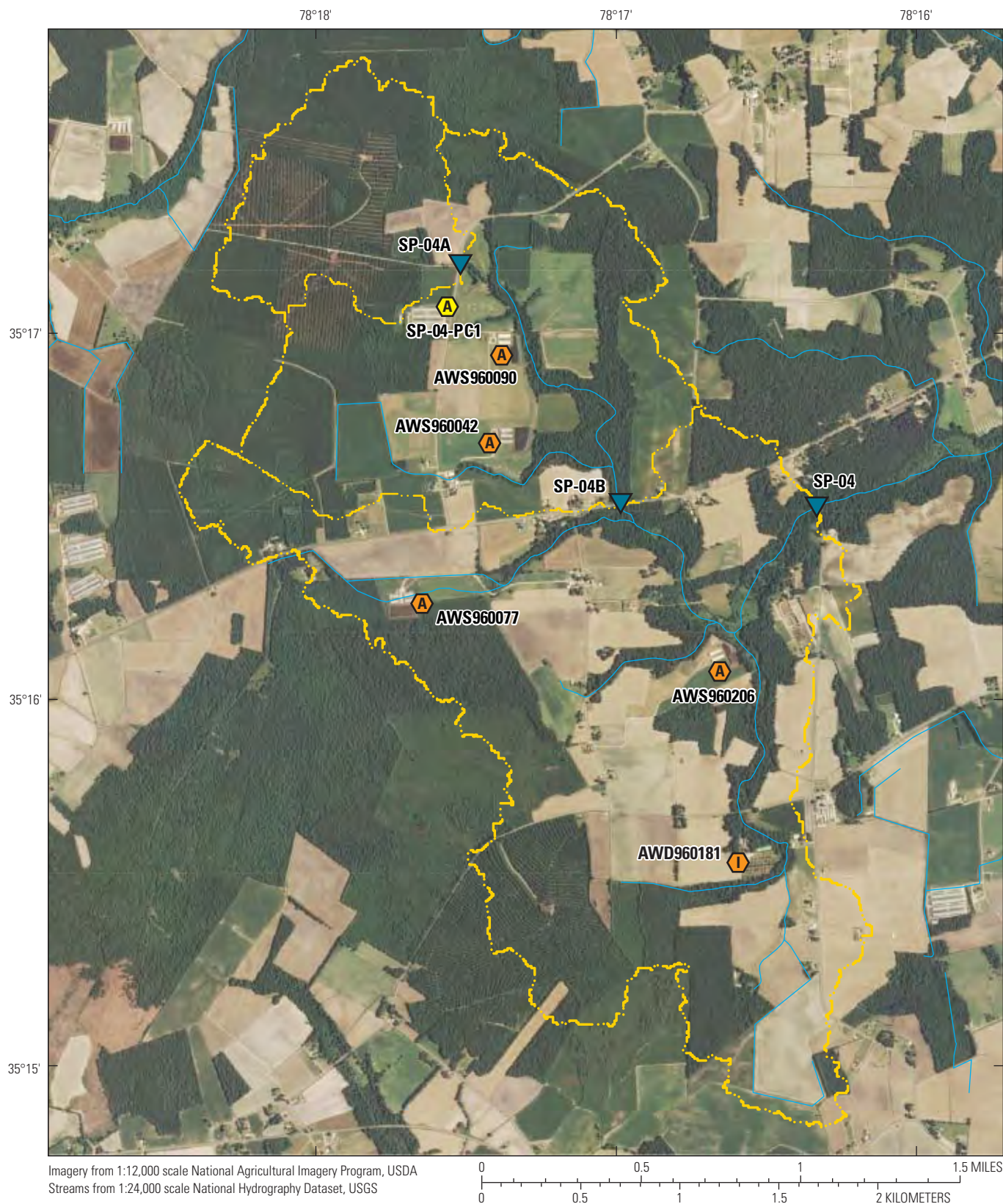
**Figure A1-38. Study site SP-02 (See table 1 and fig. 2 for study site information)**





**Figure A1-39. Study site SP-03 (See table 1 and fig. 2 for study site information)**

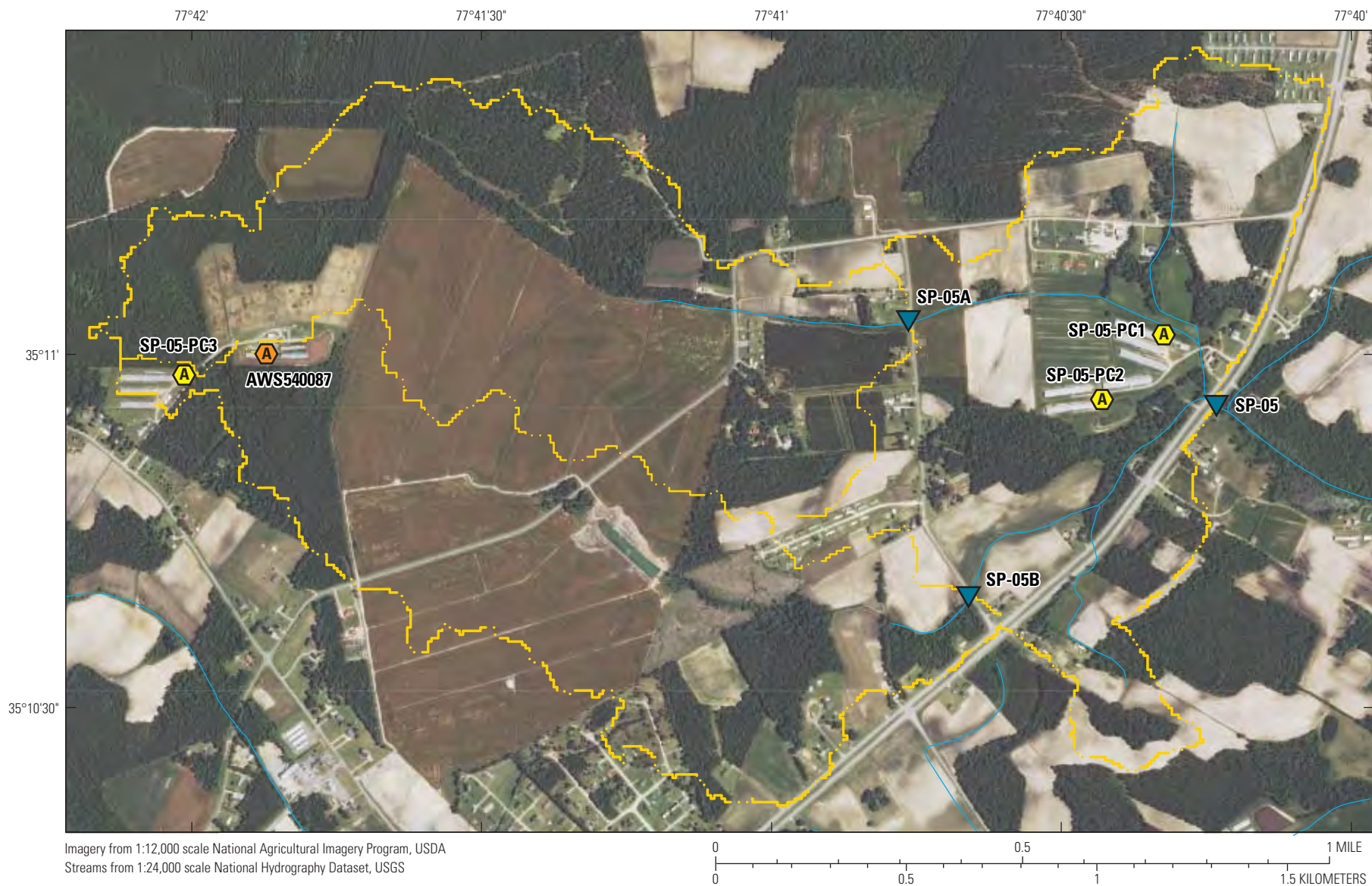




- EXPLANATION**
- Watershed drainage boundary
  - Secondary watershed drainage boundary
  - SP-04 Study site and number
  - SP-04-PC1 Active poultry CAFO and assigned field number
  - AWS960206 Active swine CAFO and permit number
  - AWD960181 Inactive swine CAFO and permit number

**Figure A1-40. Study sites SP-04, SP-04A, and SP-04B (See table 1 and fig. 2 for study site information)**





- EXPLANATION**
- Watershed drainage boundary
  - ... Secondary watershed drainage boundary
  - SP-05 Study site and number
  - SP-05-PC1 Active poultry CAFO and assigned field number
  - AWS540087 Active swine CAFO and permit number

**Figure A1-41. Study sites SP-05, SP-05A, and SP-05B (See table 1 and fig. 2 for study site information)**

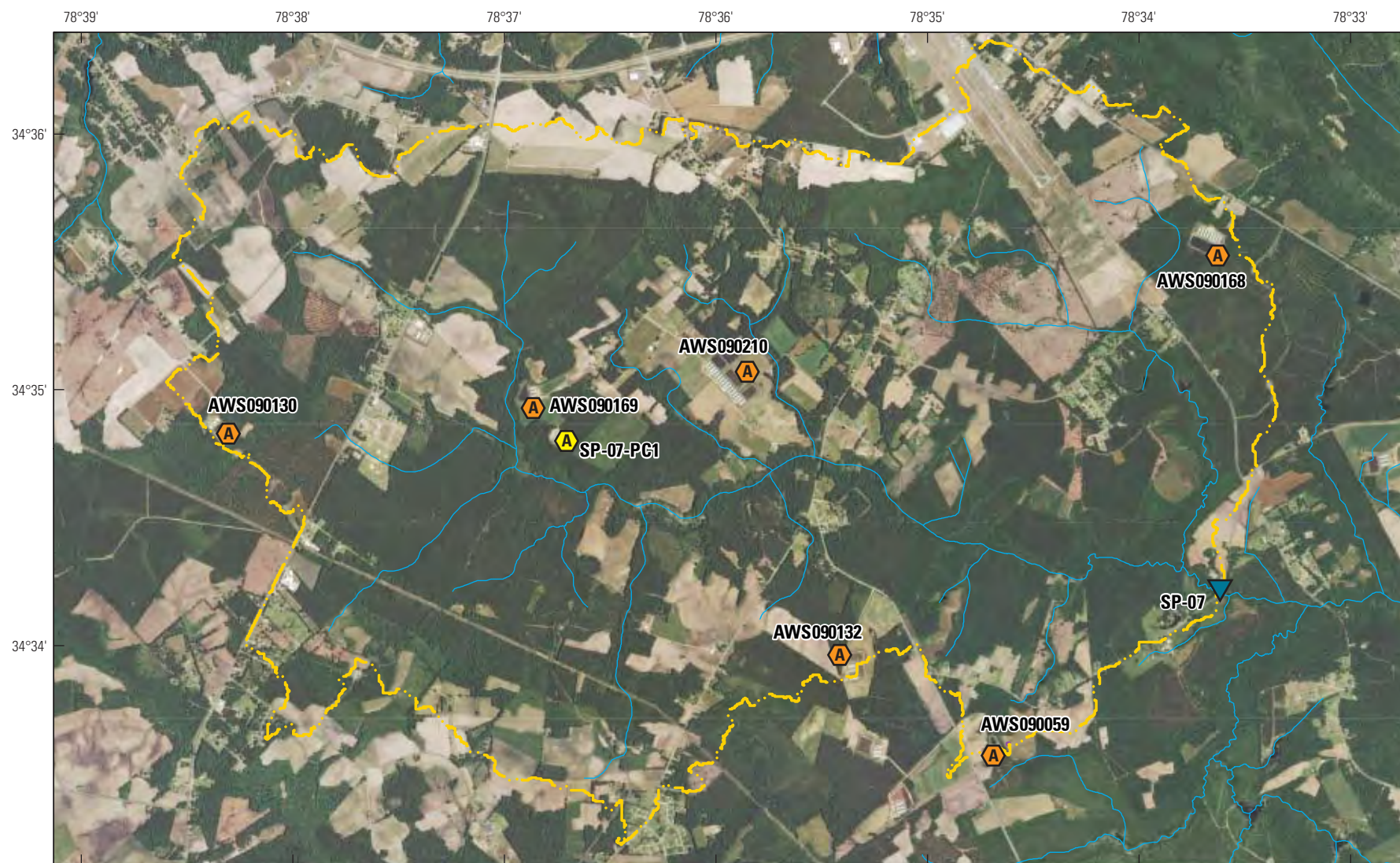




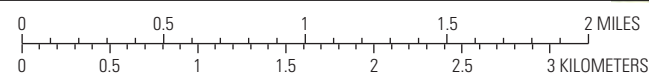
EXPLANATION	
	Watershed drainage boundary
SP-06	Study site and number
SP-06-PC1	Active poultry CAFO and assigned field number
AWS090023	Active swine CAFO and permit number

**Figure A1-42. Study site SP-06 (See table 1 and fig. 2 for study site information)**





Imagery from 1:12,000 scale National Agricultural Imagery Program, USDA  
Streams from 1:24,000 scale National Hydrography Dataset, USGS



EXPLANATION	
---	Watershed drainage boundary
SP-07	Study site and number
SP-07-PC1	Active poultry CAFO and assigned field number
AWS090169	Active swine CAFO and permit number

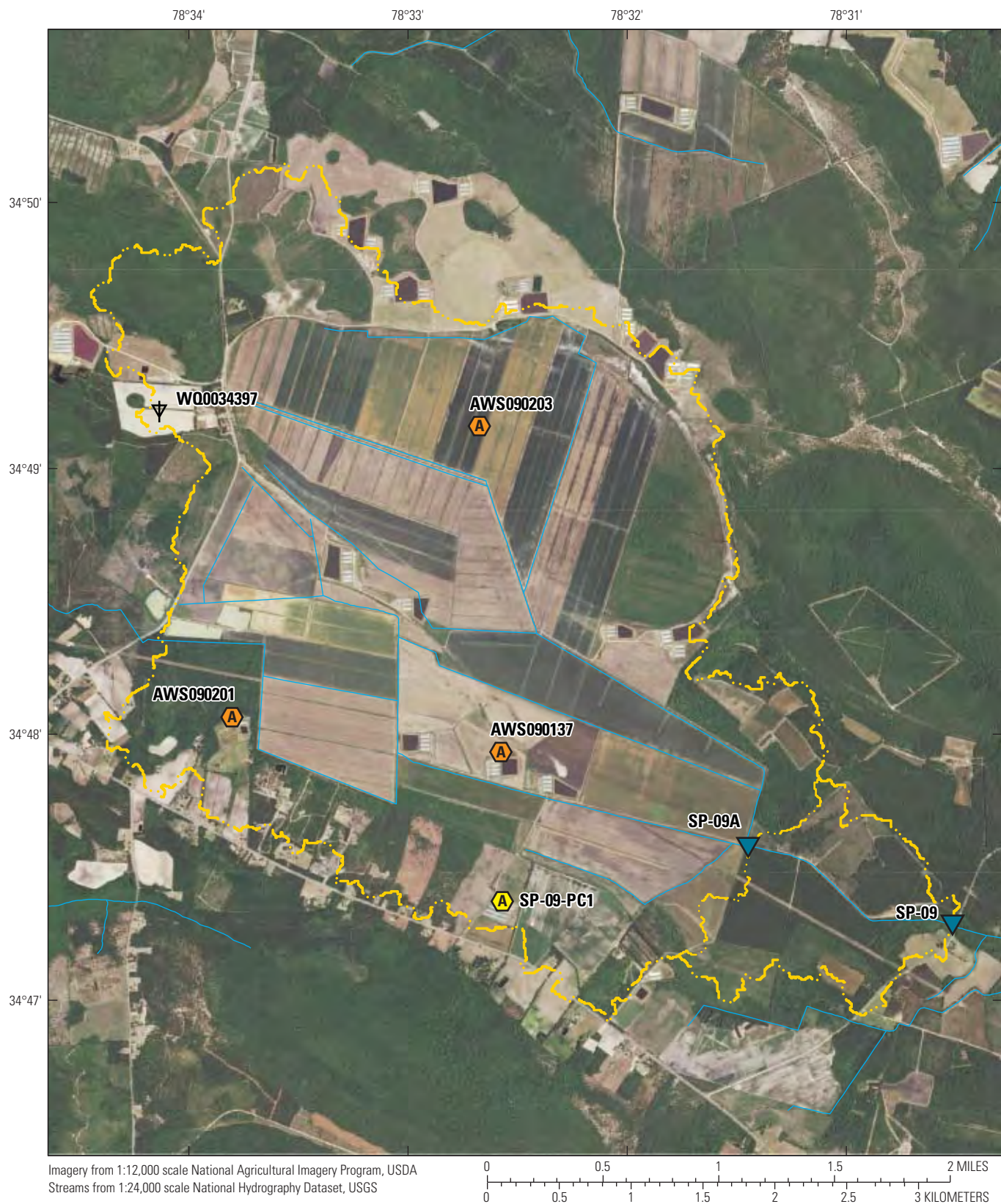
**Figure A1-43. Study site SP-07 (See table 1 and fig. 2 for study site information)**





**Figure A1-44. Study site SP-08 (See table 1 and fig. 2 for study site information)**





**Figure A1-45. Study sites SP-09 and SP-09A (See table 1 and fig. 2 for study site information)**





**Figure A1-46. Study site SP-10 (See table 1 and fig. 2 for study site information)**

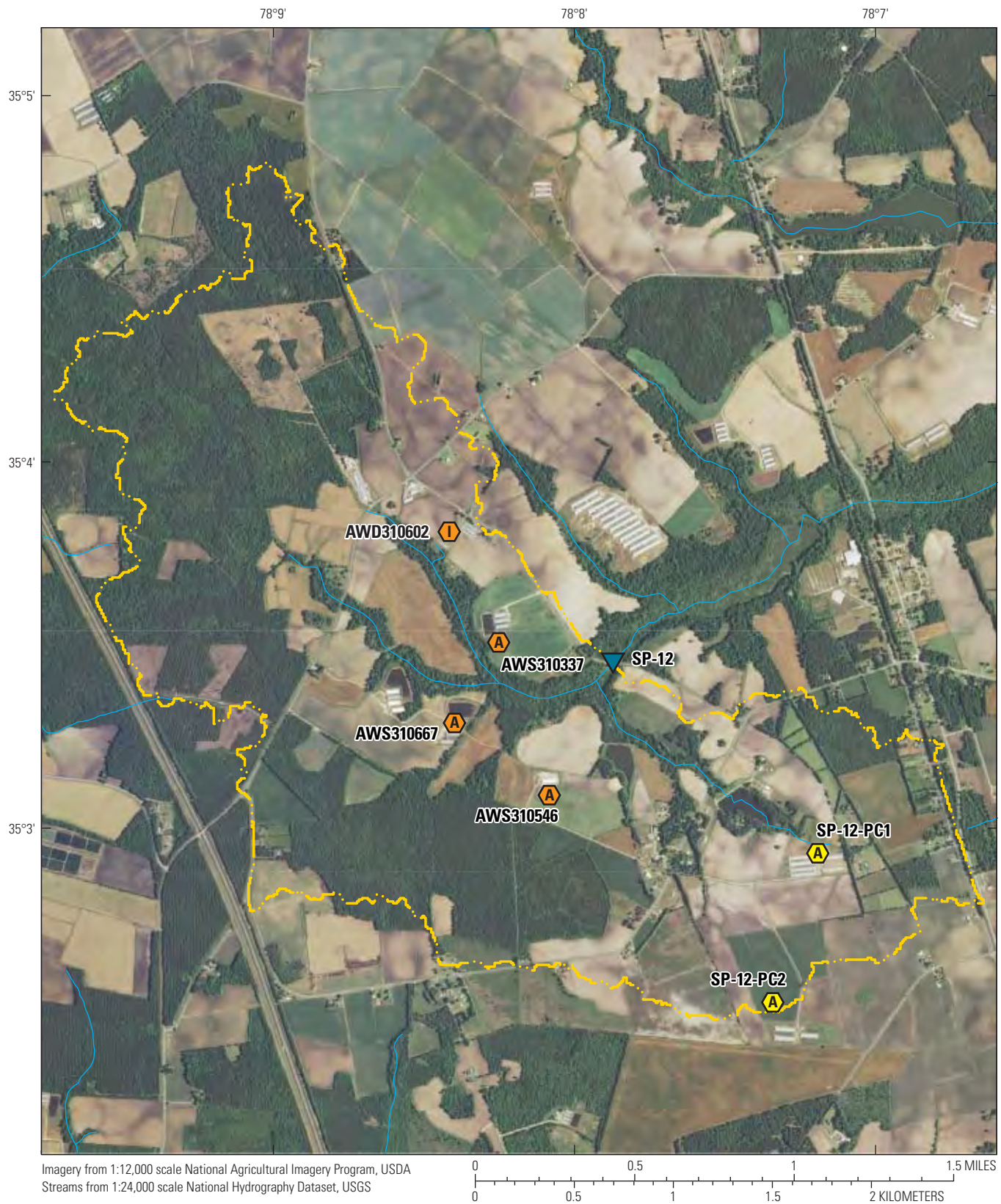




- EXPLANATION**
- Watershed drainage boundary
  - Secondary watershed drainage boundary
  - SP-11 Study site and number
  - SP-11-PC1 Active poultry CAFO and assigned field number
  - AWS820058 Active swine CAFO and permit number

**Figure A1-47. Study sites SP-11, SP-11A, SP-11B, SP-11C, and SP-11D (See table 1 and fig. 2 for study site information)**





EXPLANATION	
---	Watershed drainage boundary
SP-12	Study site and number
SP-12-PC1	Active poultry CAFO and assigned field number
AWS310546	Active swine CAFO and permit number
AWD310602	Inactive swine CAFO and permit number

**Figure A1-48. Study site SP-12 (See table 1 and fig. 2 for study site information)**

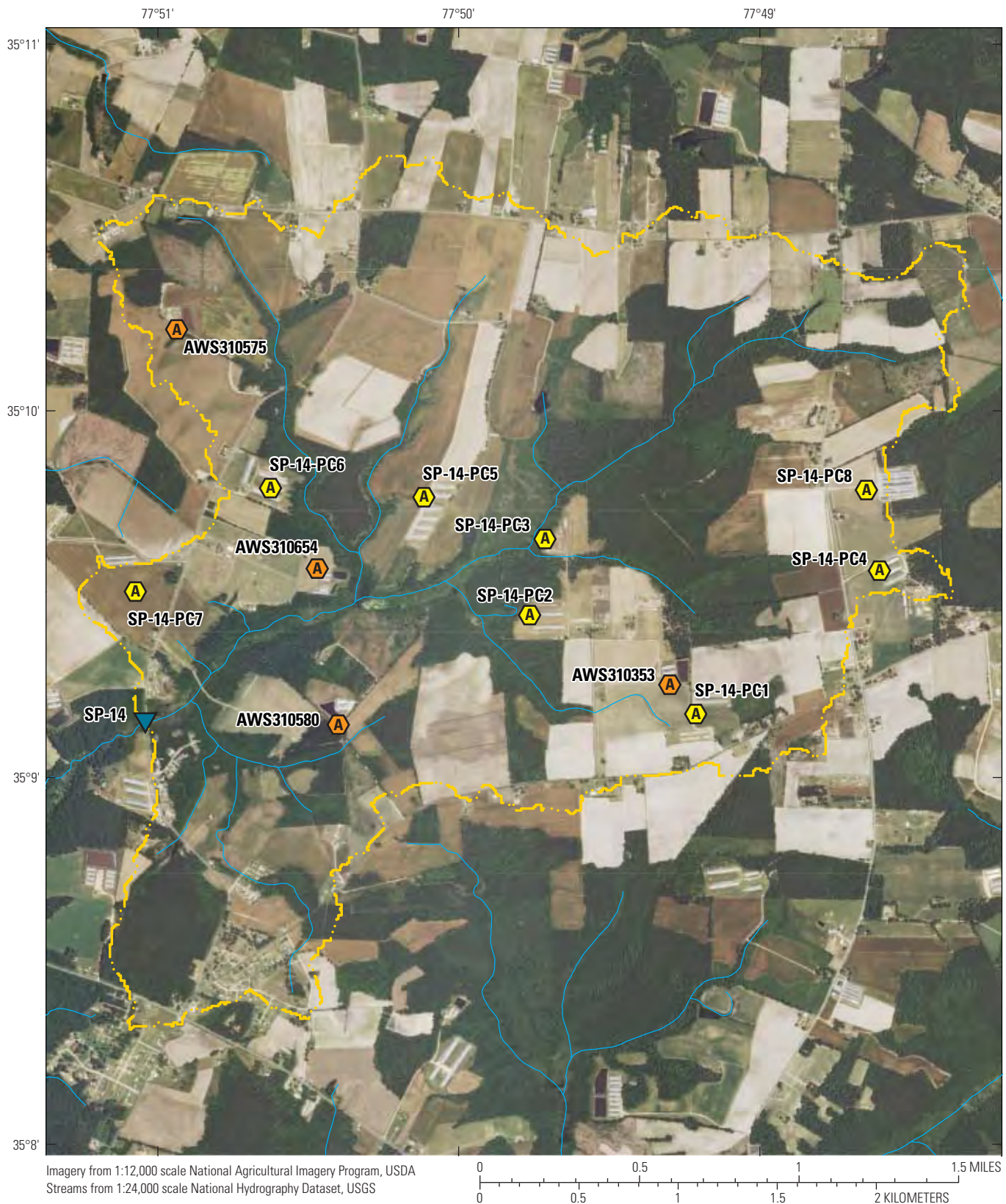




EXPLANATION	
SP-13	Watershed drainage boundary
SP-13-PC1	Study site and number
AWS310057	Active poultry CAFO and assigned field number
	Active swine CAFO and permit number

Figure A1-49. Study site SP-13 (See table 1 and fig. 2 for study site information)





#### EXPLANATION

- Watershed drainage boundary
- SP-14 Study site and number
- SP-14-PC1 Active poultry CAFO and assigned field number
- AWS310353 Active swine CAFO and permit number

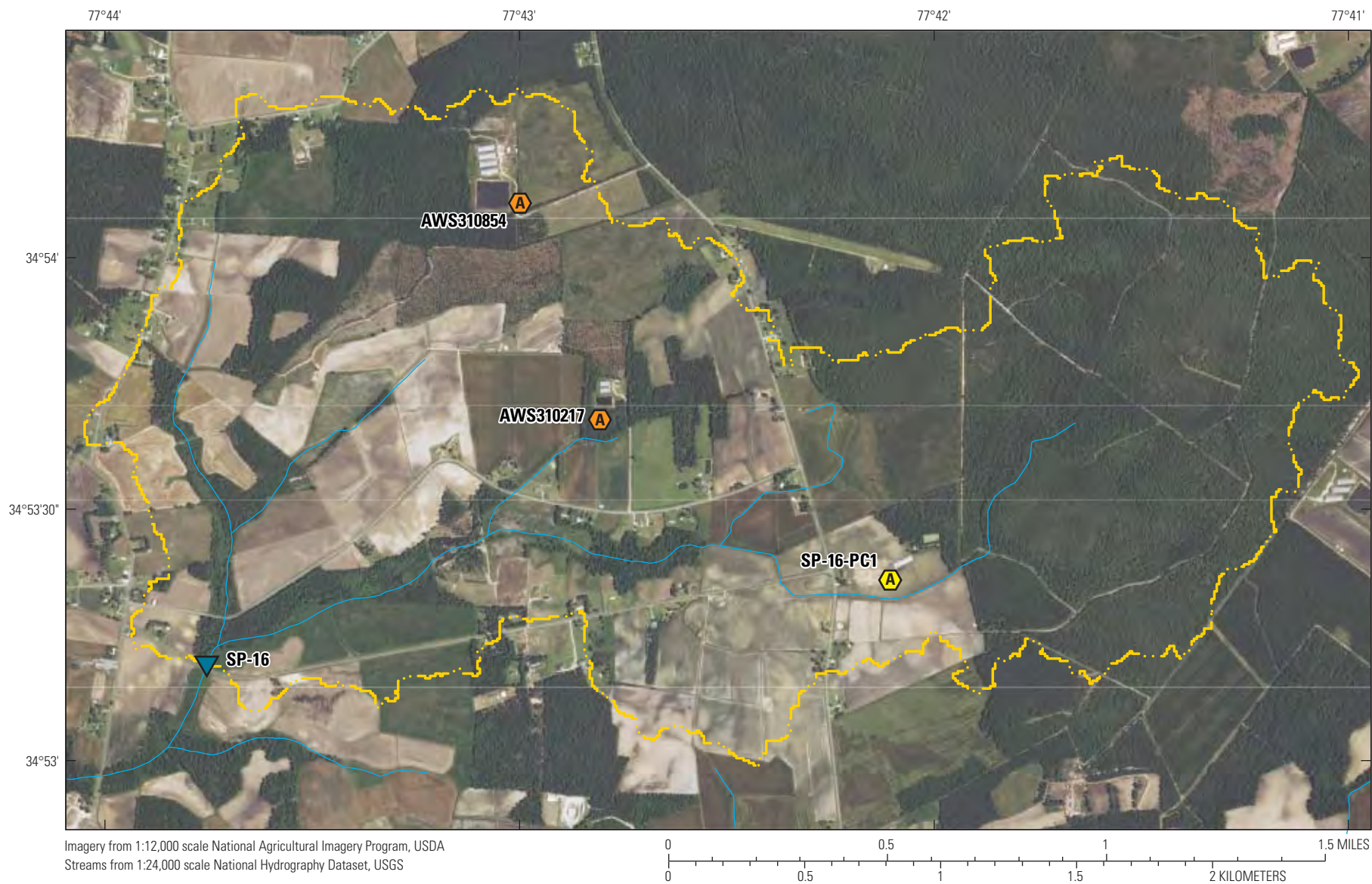
**Figure A1-50. Study site SP-14 (See table 1 and fig. 2 for study site information)**





**Figure A1-51. Study site SP-15 (See table 1 and fig. 2 for study site information)**





- EXPLANATION**
- Watershed drainage boundary
  - SP-16 Study site and number
  - SP-16-PC1 Active poultry CAFO and assigned field number
  - AWS310217 Active swine CAFO and permit number

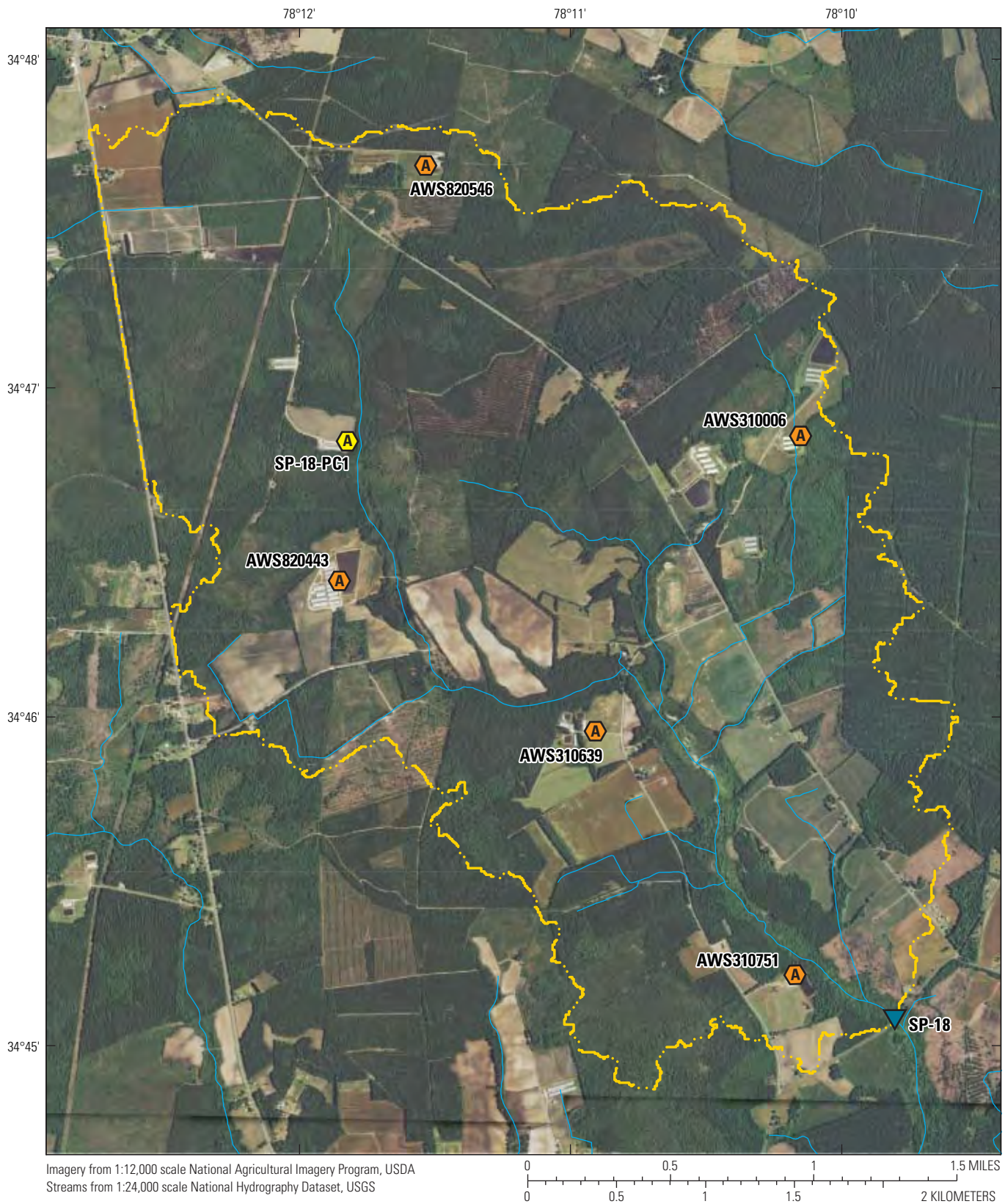
**Figure A1-52. Study site SP-16 (See table 1 and fig. 2 for study site information)**





**Figure A1-53. Study site SP-17 (See table 1 and fig. 2 for study site information)**





**Figure A1-54. Study site SP-18 (See table 1 and fig. 2 for study site information)**