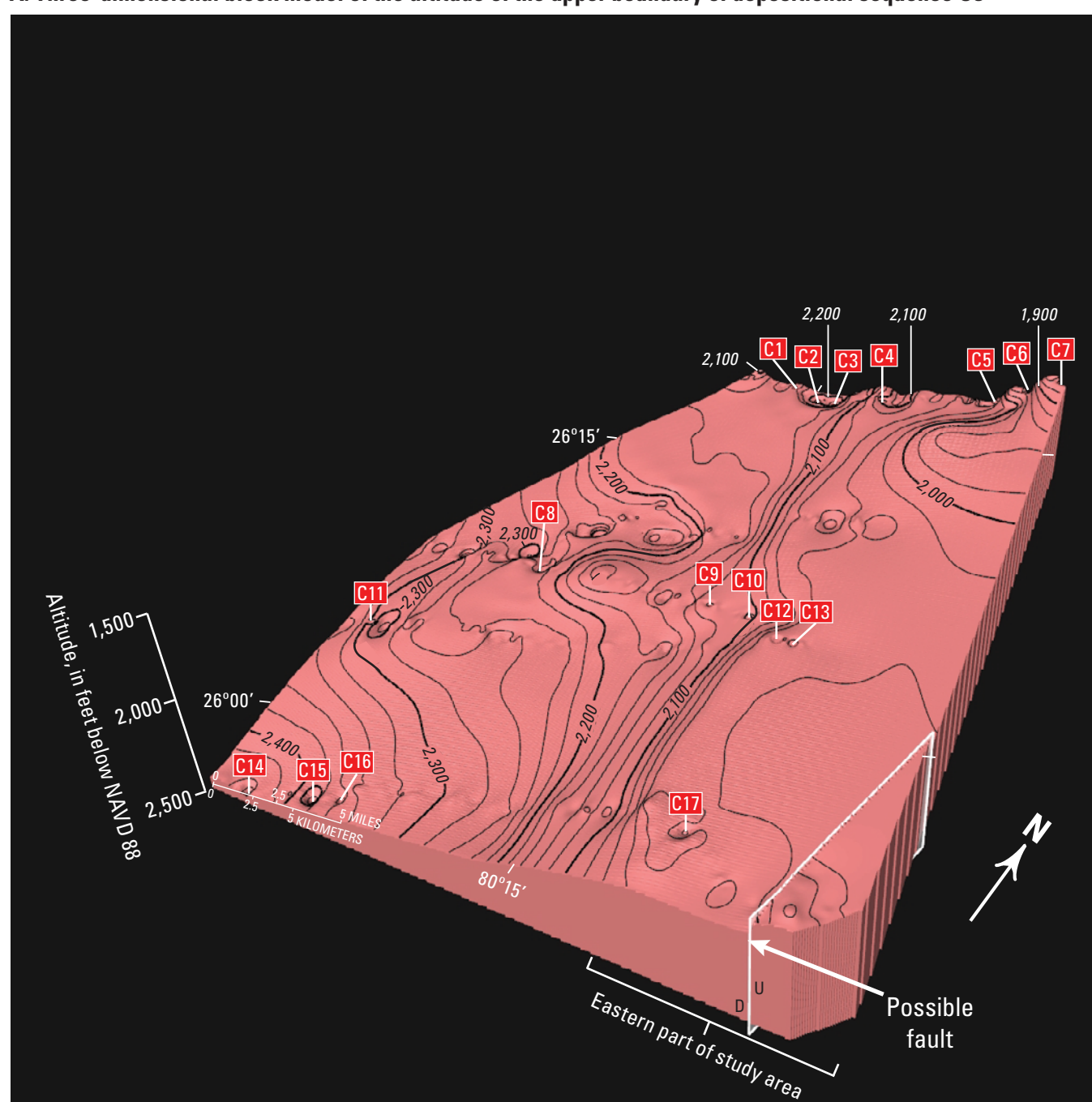
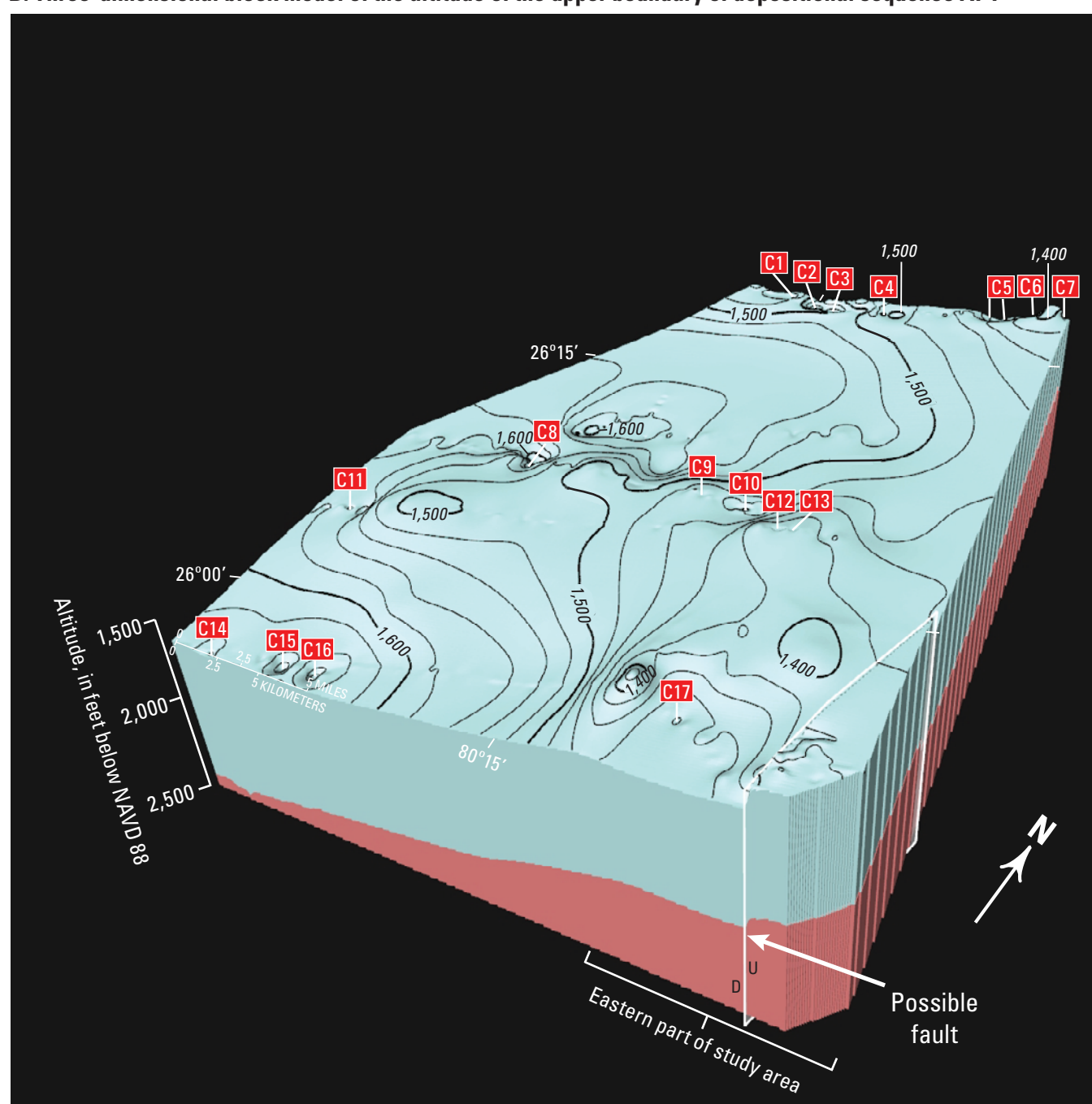


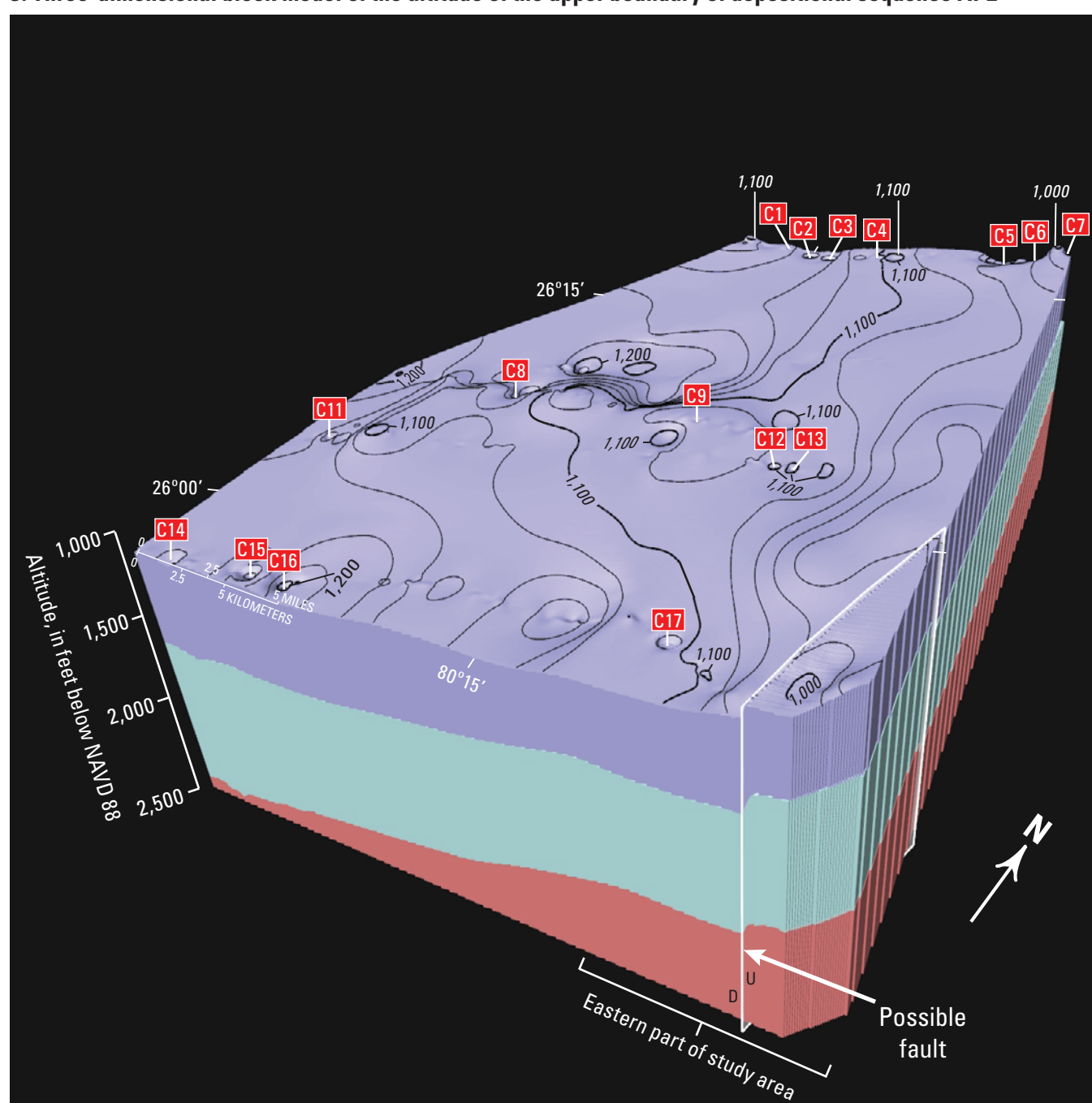
A. Three-dimensional block model of the altitude of the upper boundary of depositional sequence O3



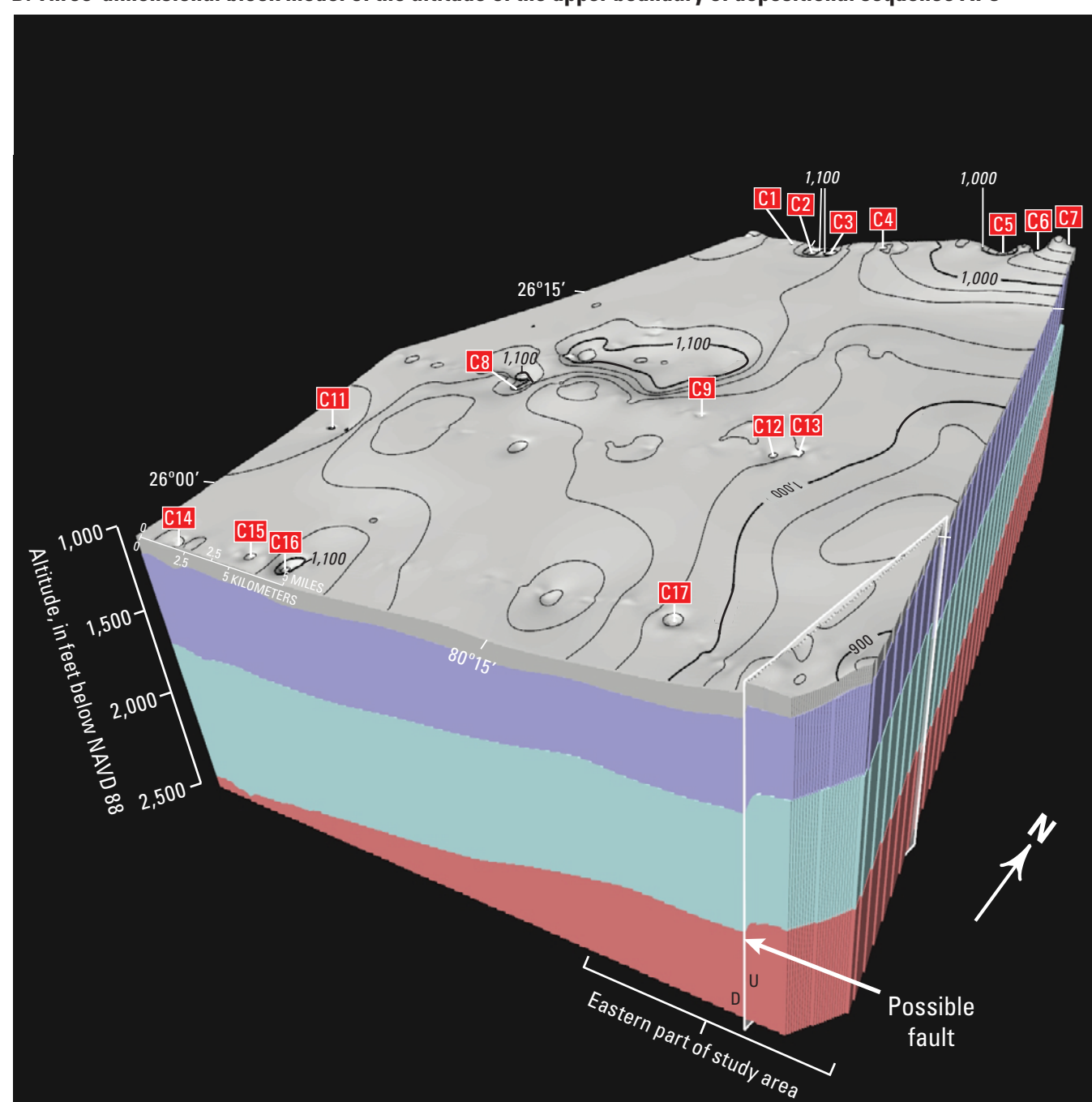
B. Three-dimensional block model of the altitude of the upper boundary of depositional sequence AP1



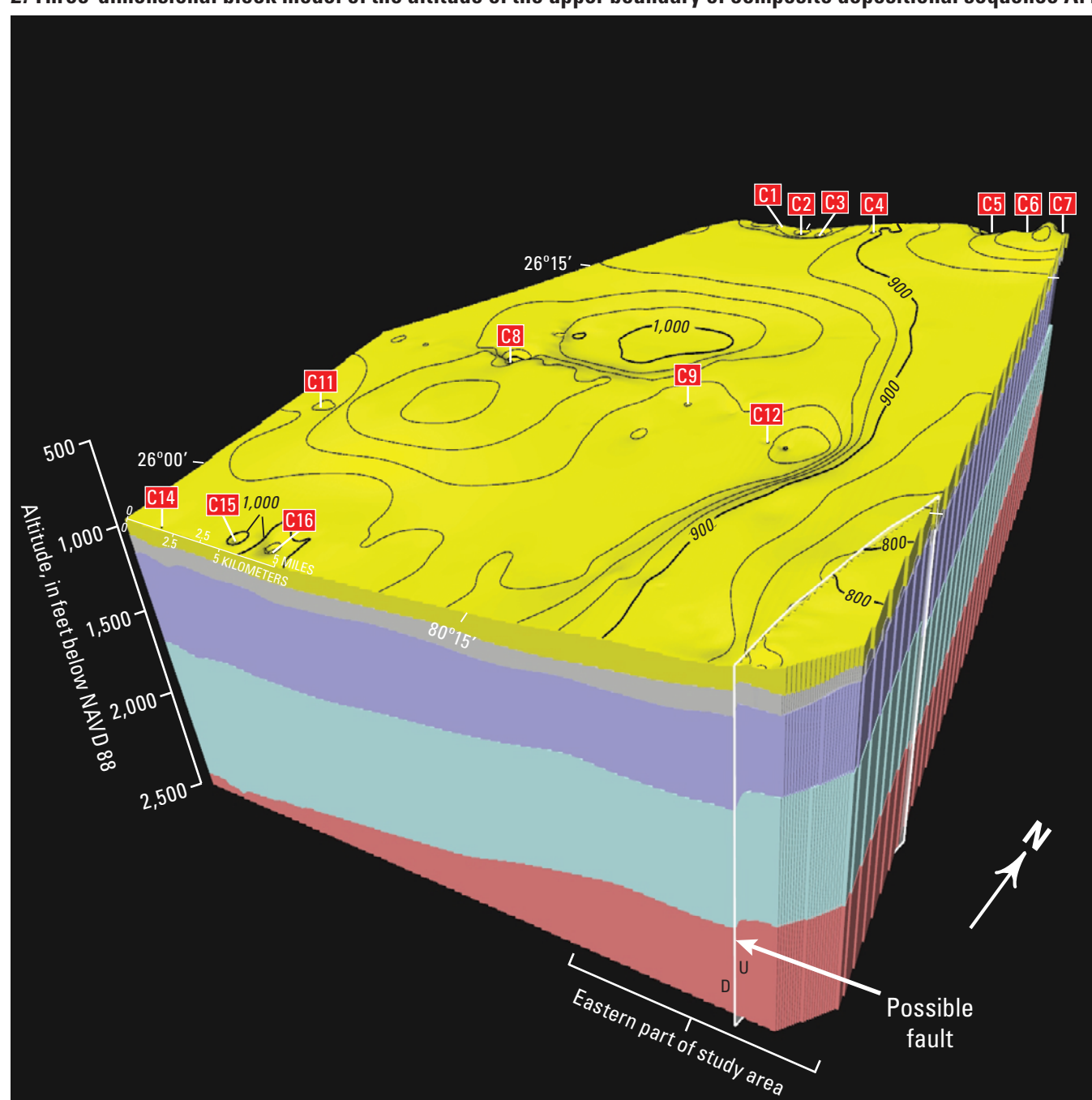
C. Three-dimensional block model of the altitude of the upper boundary of depositional sequence AP2



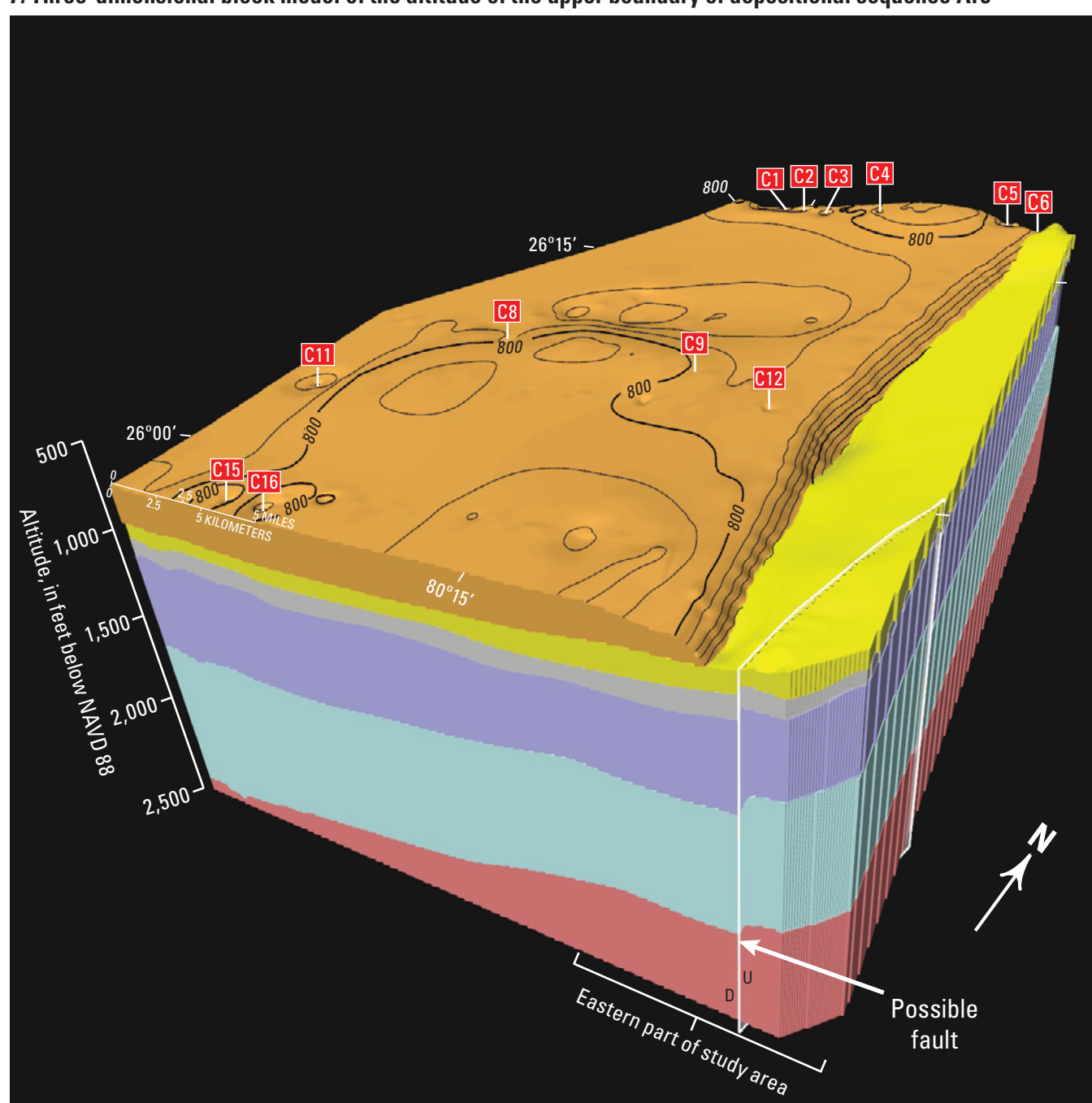
D. Three-dimensional block model of the altitude of the upper boundary of depositional sequence AP3



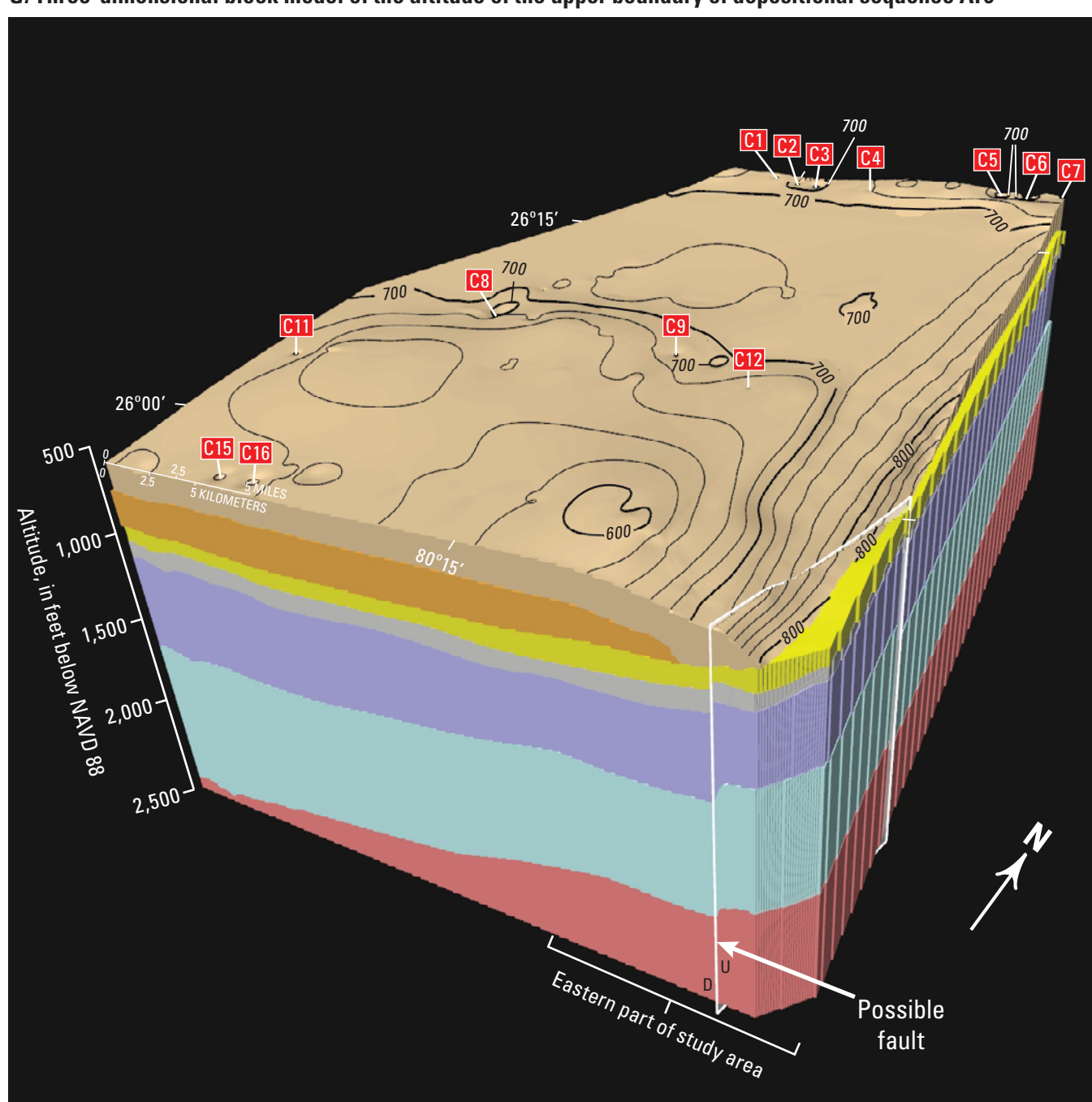
E. Three-dimensional block model of the altitude of the upper boundary of composite depositional sequence Ar1



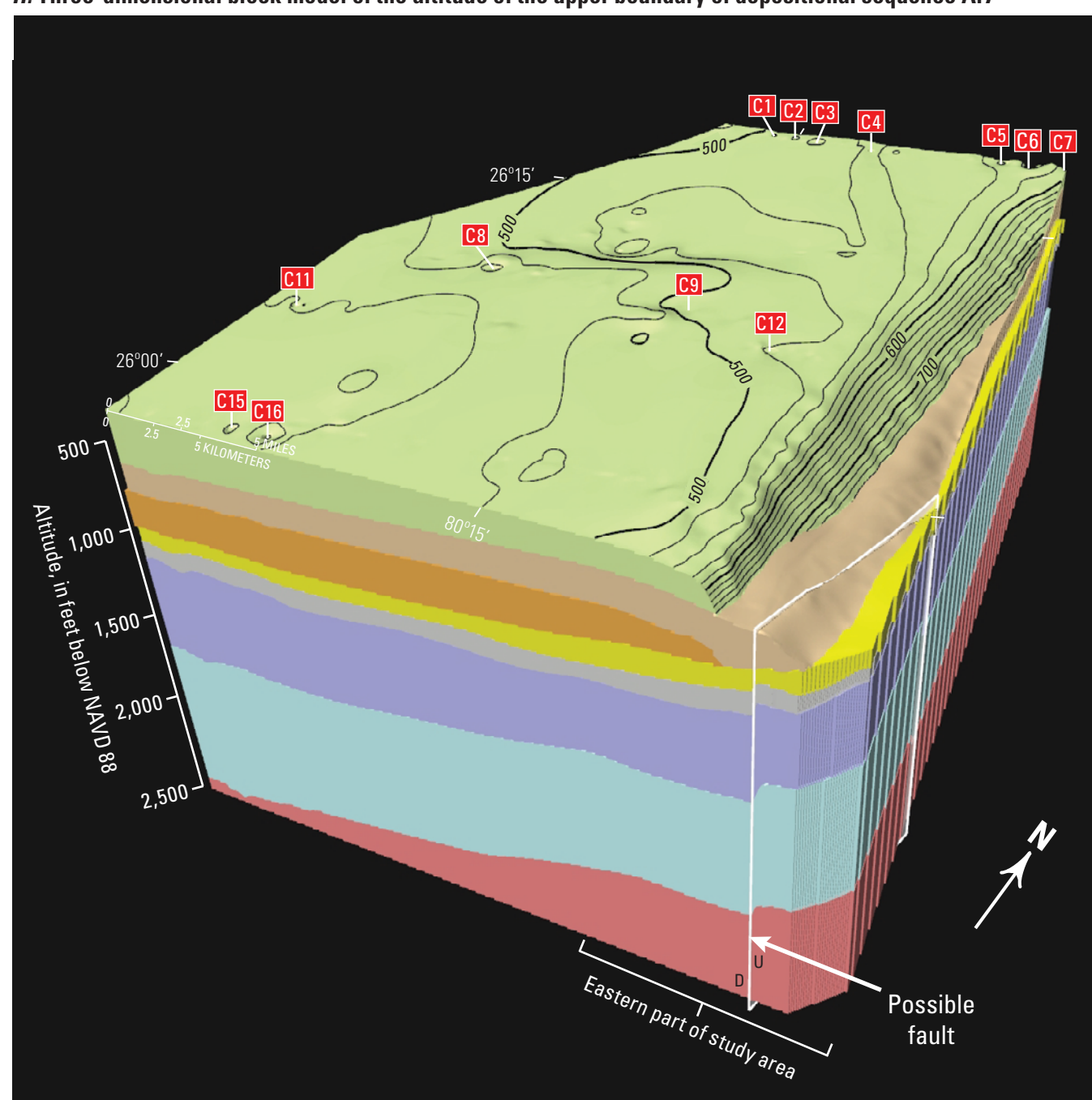
F. Three-dimensional block model of the altitude of the upper boundary of depositional sequence Ar5



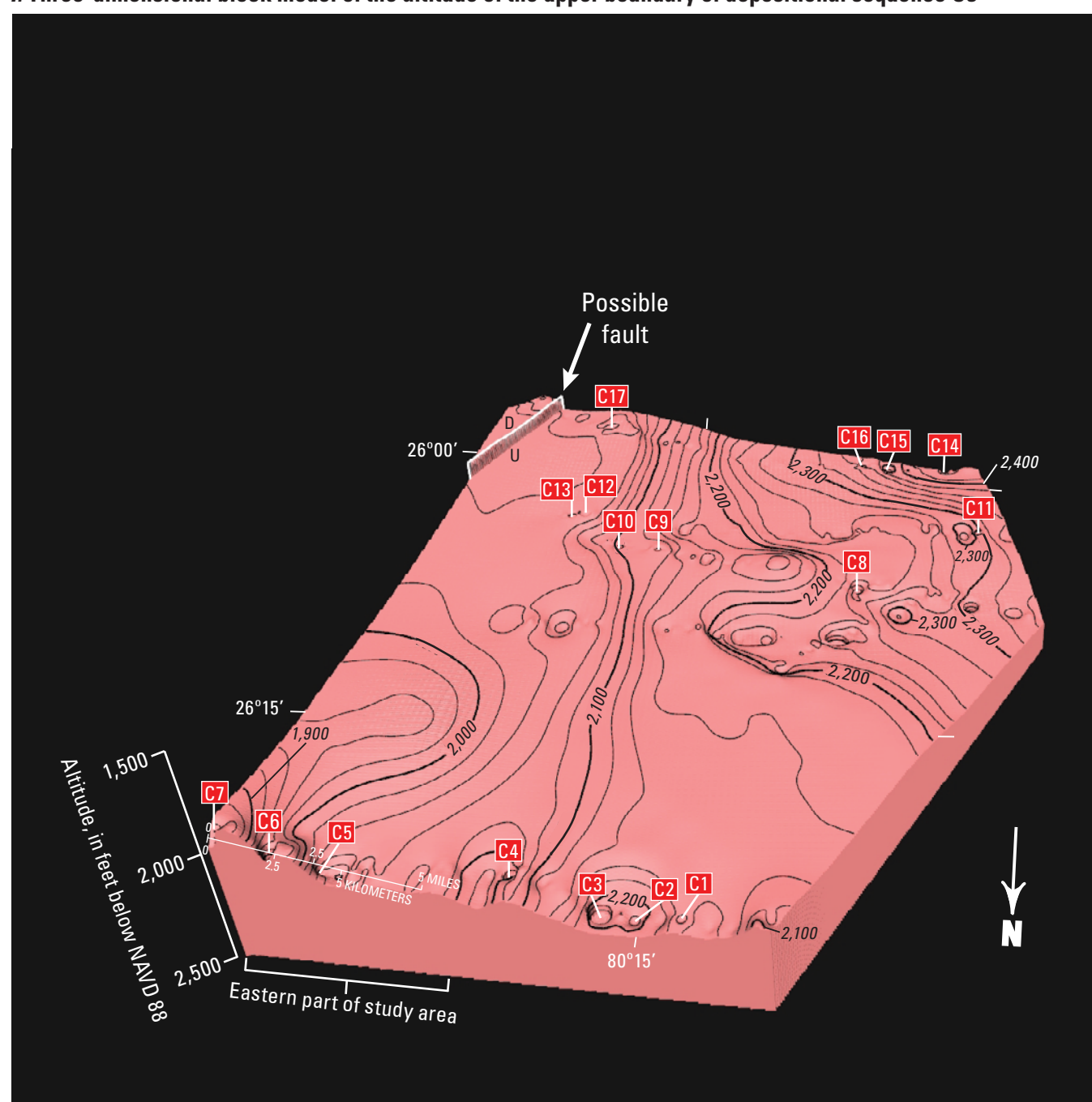
G. Three-dimensional block model of the altitude of the upper boundary of depositional sequence Ar6



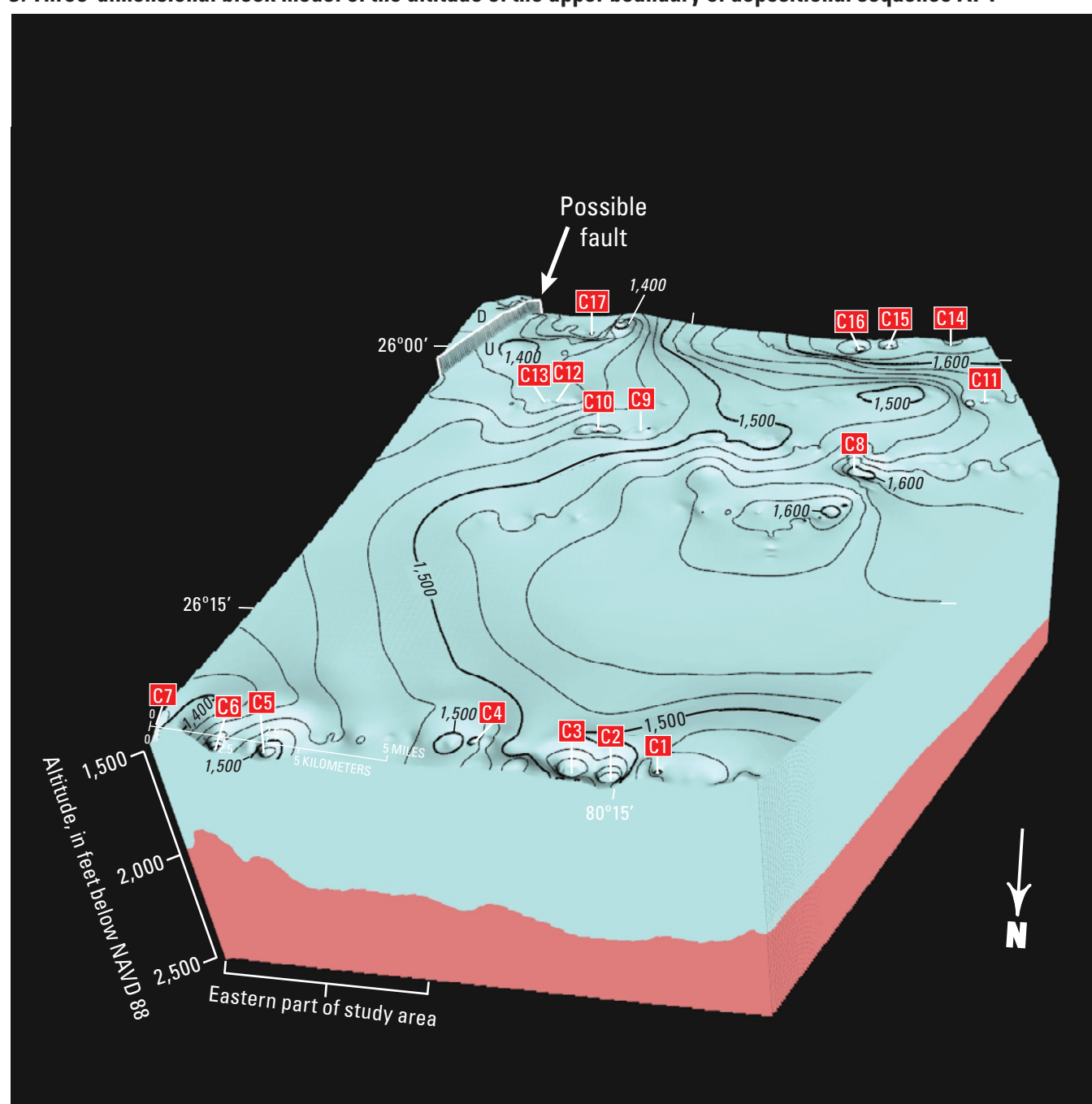
H. Three-dimensional block model of the altitude of the upper boundary of depositional sequence Ar7



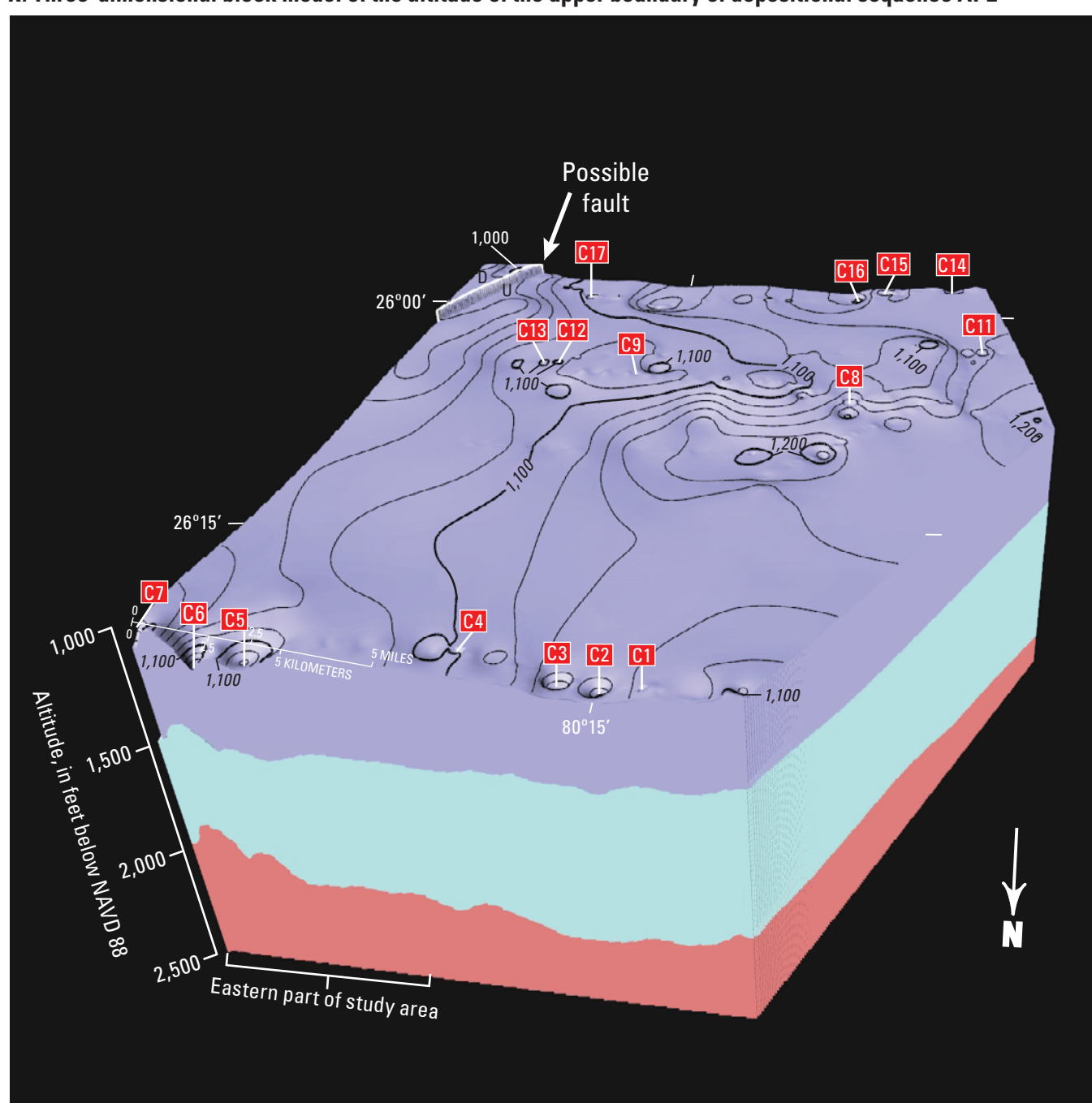
I. Three-dimensional block model of the altitude of the upper boundary of depositional sequence O3



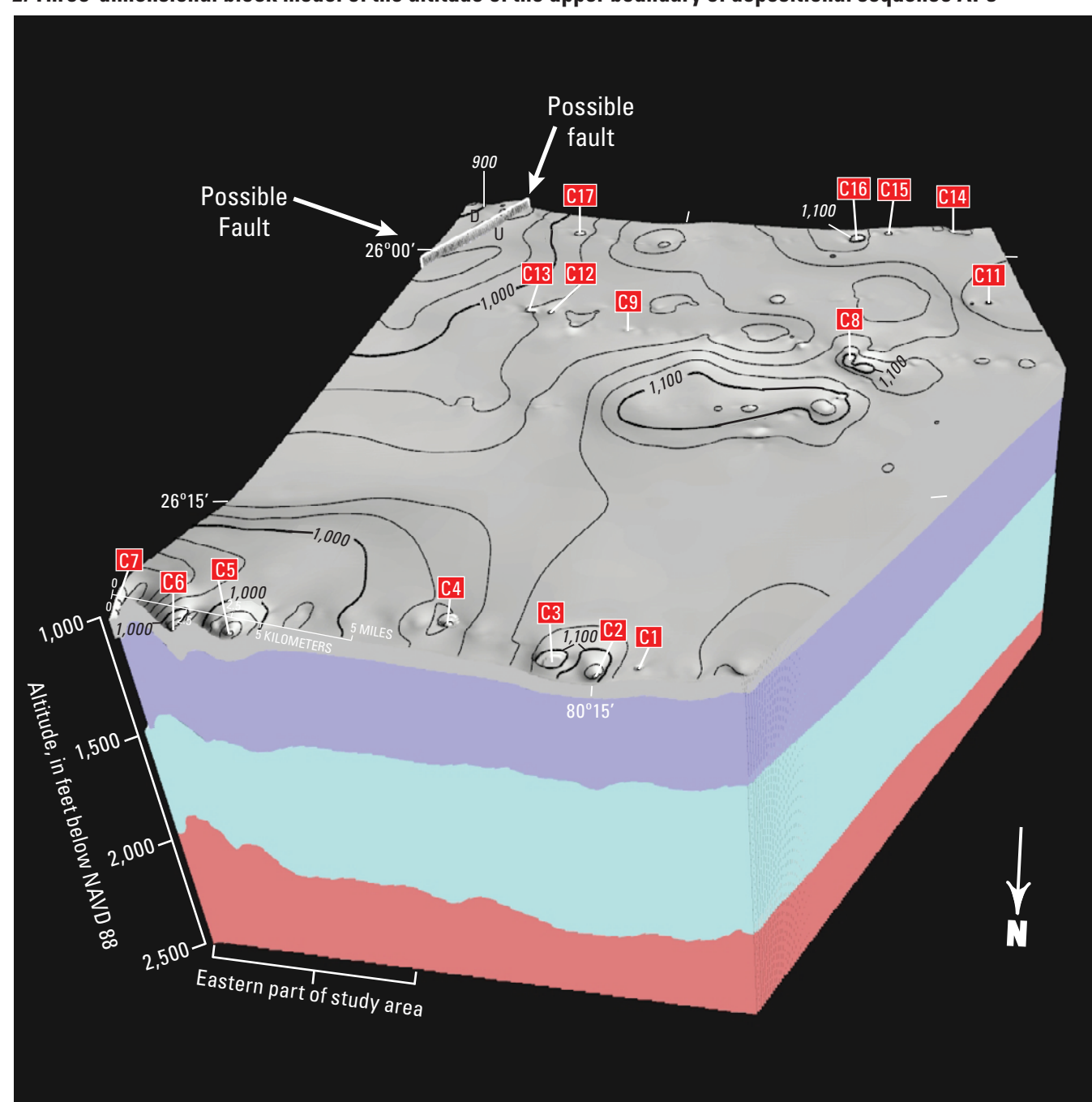
J. Three-dimensional block model of the altitude of the upper boundary of depositional sequence AP1



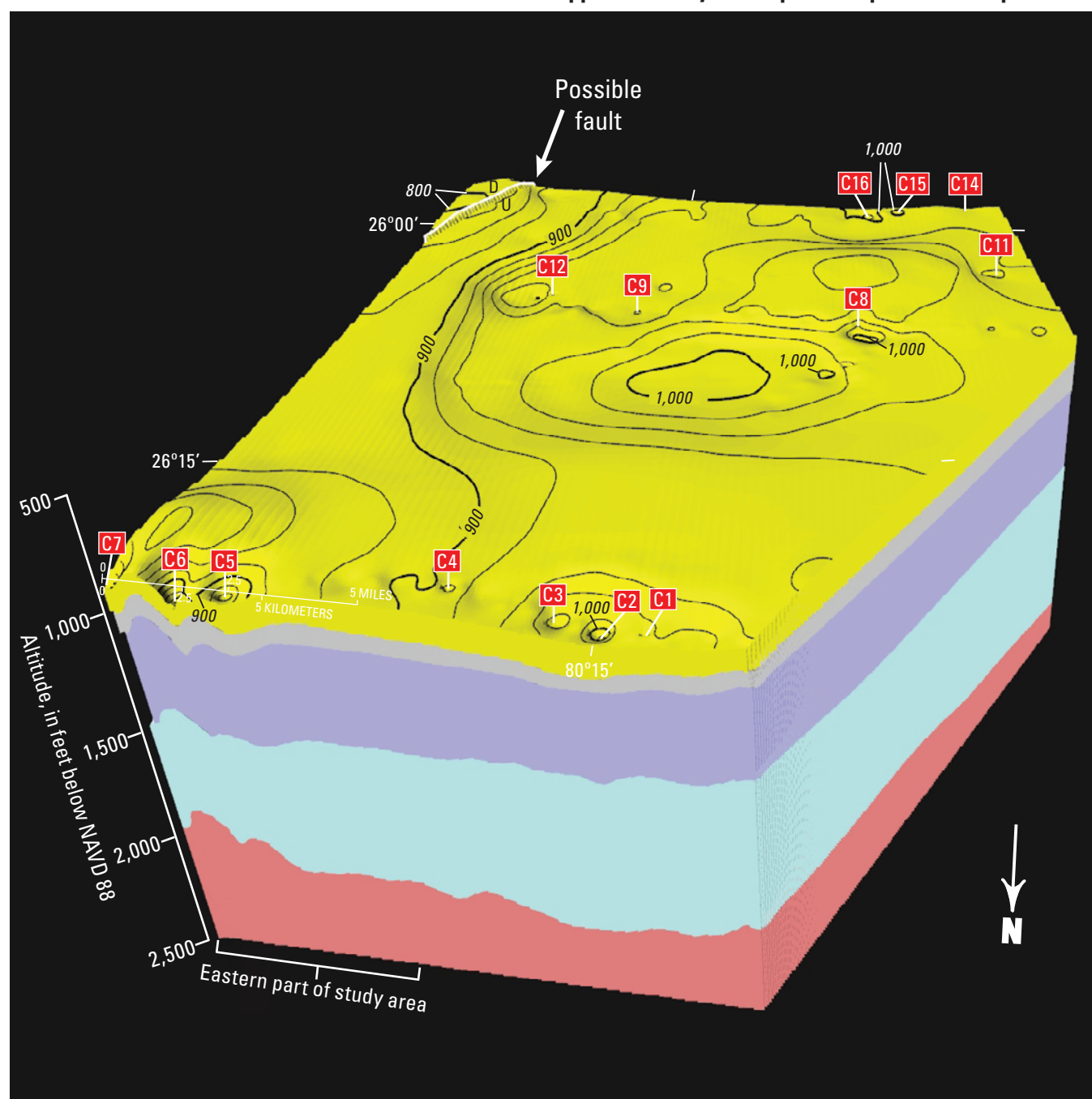
K. Three-dimensional block model of the altitude of the upper boundary of depositional sequence AP2



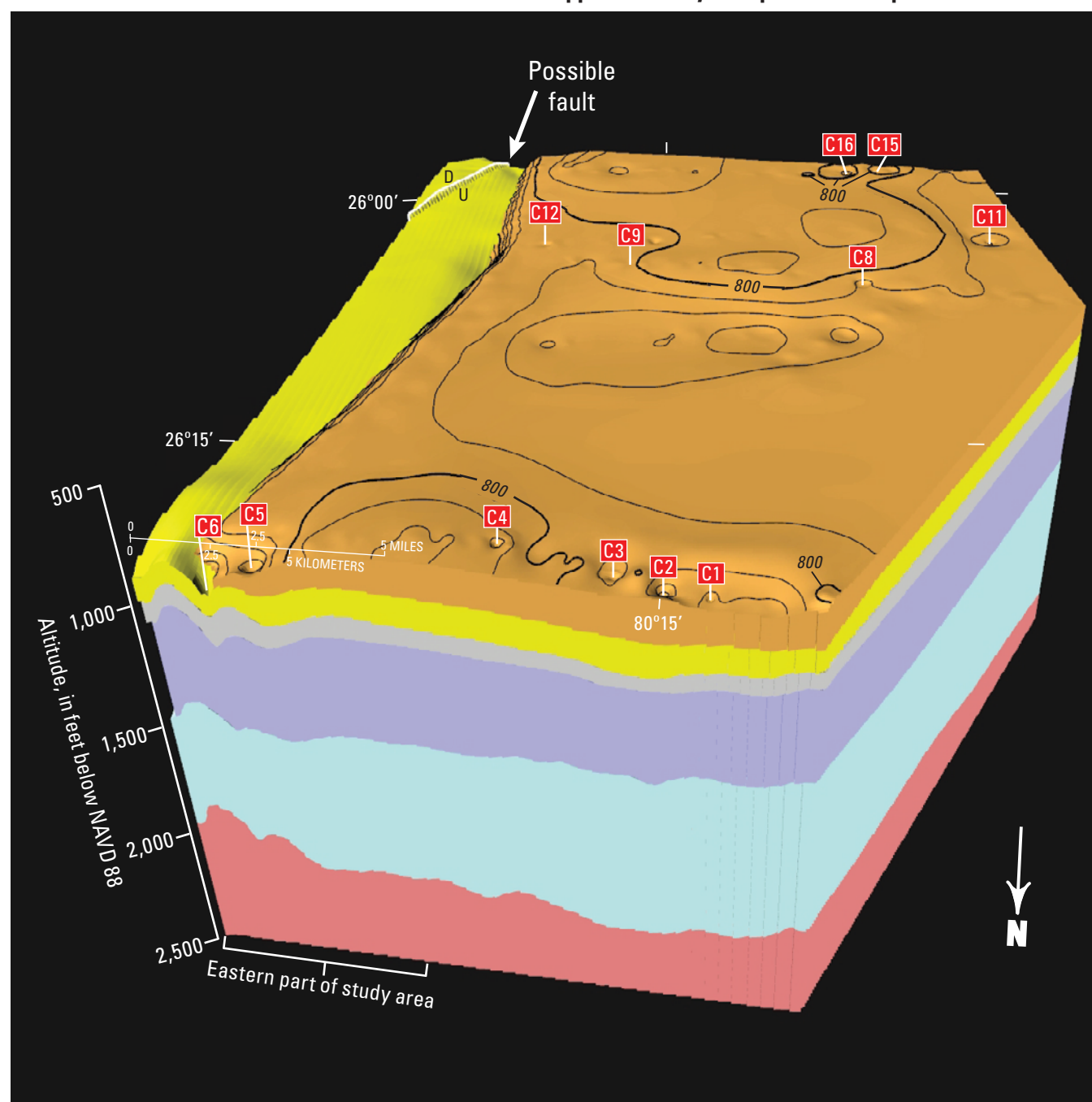
L. Three-dimensional block model of the altitude of the upper boundary of depositional sequence AP3



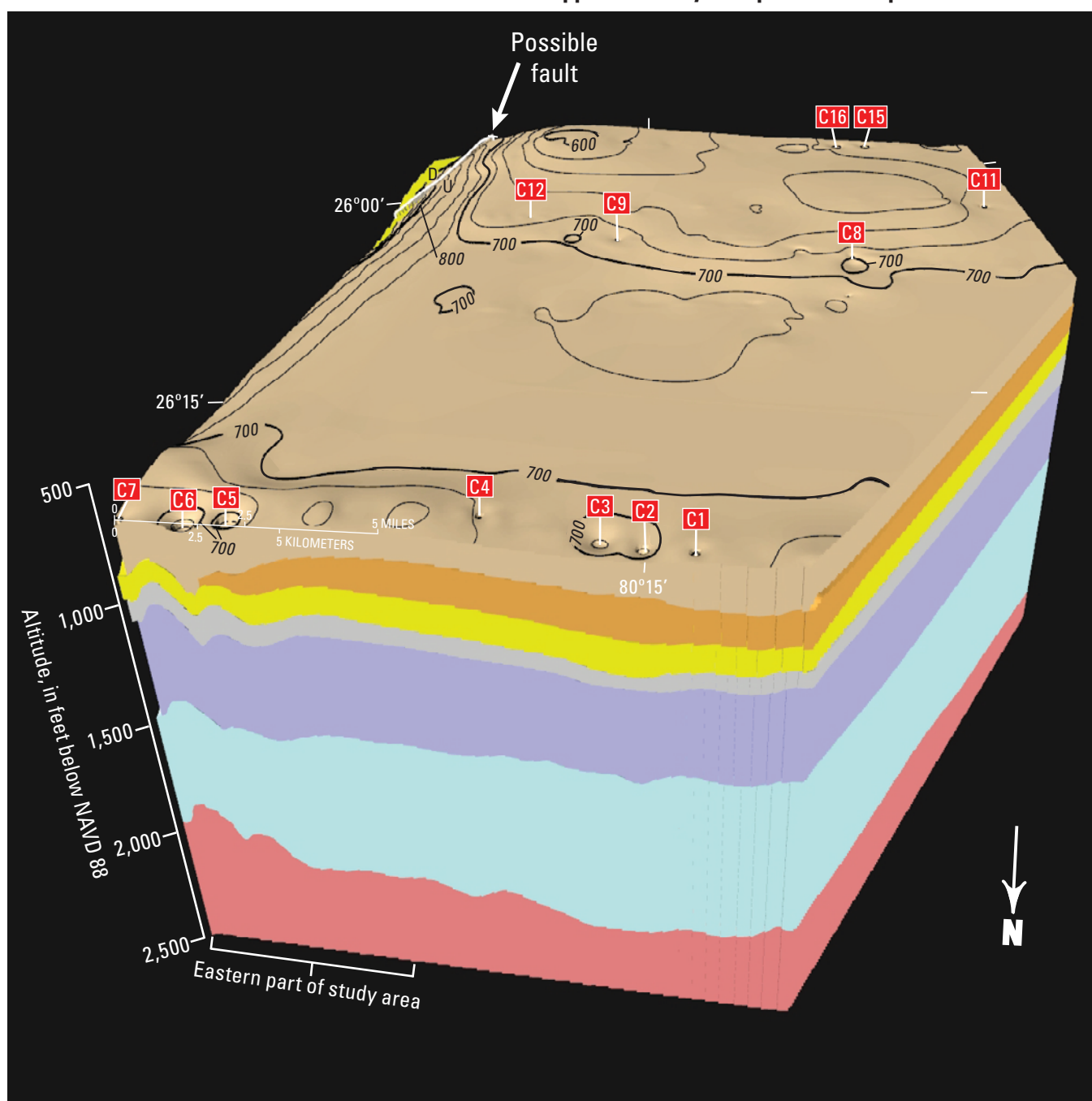
M. Three-dimensional block model of the altitude of the upper boundary of composite depositional sequence Ar1



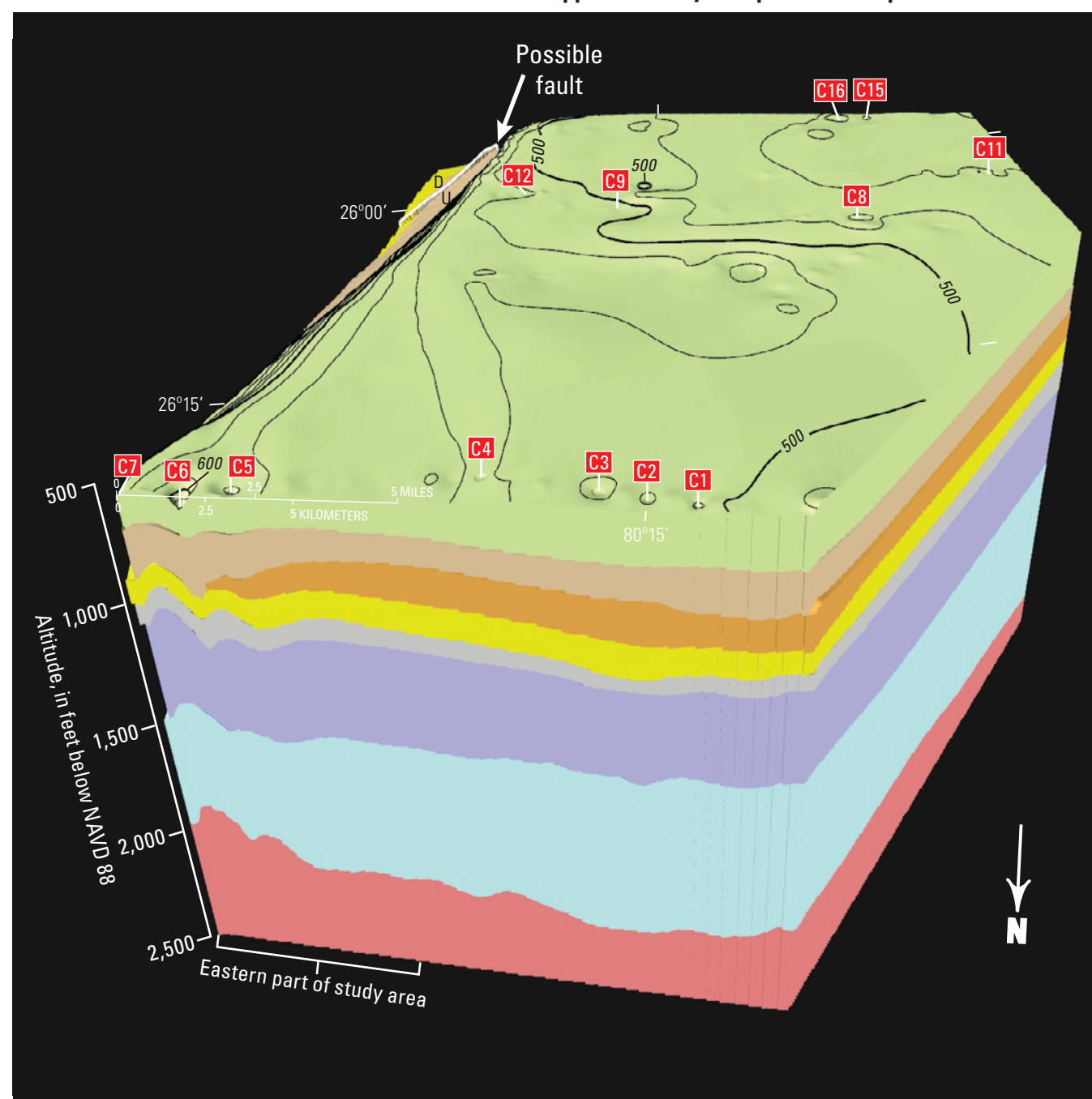
N. Three-dimensional block model of the altitude of the upper boundary of depositional sequence Ar5



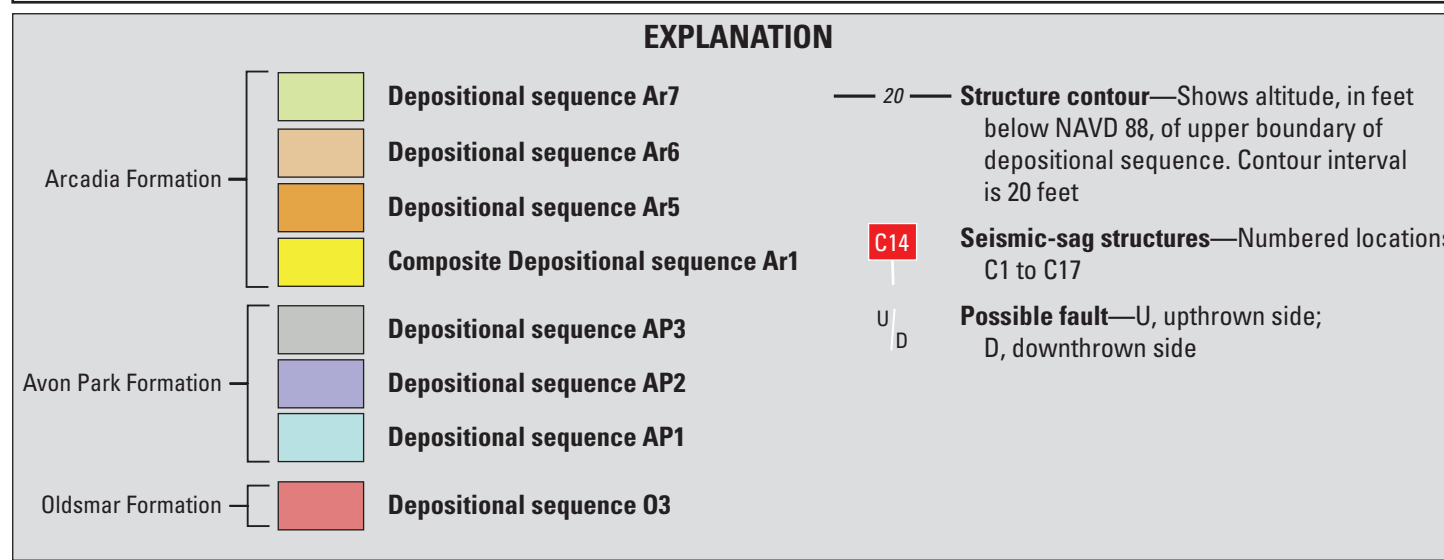
O. Three-dimensional block model of the altitude of the upper boundary of depositional sequence Ar6



P. Three-dimensional block model of the altitude of the upper boundary of depositional sequence Ar7



VERTICAL SCALE GREATLY EXAGGERATED



Block Models Showing Altitudes of Eight Depositional-Sequence Upper Boundaries of the Oldsmar Formation, Avon Park Formation, and Arcadia Formation, Eastern Broward County, Florida

By
Kevin J. Cunningham, Jared W. Kluesner, Richard L. Westcott, Edward Robinson, Cameron Walker, and Shakira A. Khan
2017

Any use of trade, product, or firm names in this publication is for descriptive purposes only and does not imply endorsement by the U.S. Government.

This map was printed on an electronic plotter directly from digital files. Dimensional calibration may vary between electronic plotters and between X and Y directions on the same plotter, and paper may change size due to atmospheric conditions; therefore, scale and proportions may not be true on plots of this map.

For sale by U.S. Geological Survey, Information Services, Box 25086, Federal Center, Denver, CO 80225, 1-888-434-USGS

Suggested citation: Cunningham, K.J., Kluesner, J.W., Westcott, R.L., Robinson, E., Walker, C., and Khan, S.A., 2017, Sequence stratigraphy, seismic stratigraphy, and seismic structures of the lower intermediate confining unit and most of the Floridan aquifer system, Broward County, Florida, U.S. Geological Survey Scientific Investigations Report 2017–5109, 71 p., 21 pls., <https://doi.org/10.3133/sir20175109>

ISSN 2328-0238 (online)
<https://doi.org/10.3133/sir20175109>