



Geochemical and Mineralogical Maps for Soils of the Conterminous United States

By David B. Smith, William F. Cannon, Laurel G. Woodruff, Federico Solano, and Karl J. Ellefsen

Open-File Report 2014–1082

**U.S. Department of the Interior
U.S. Geological Survey**

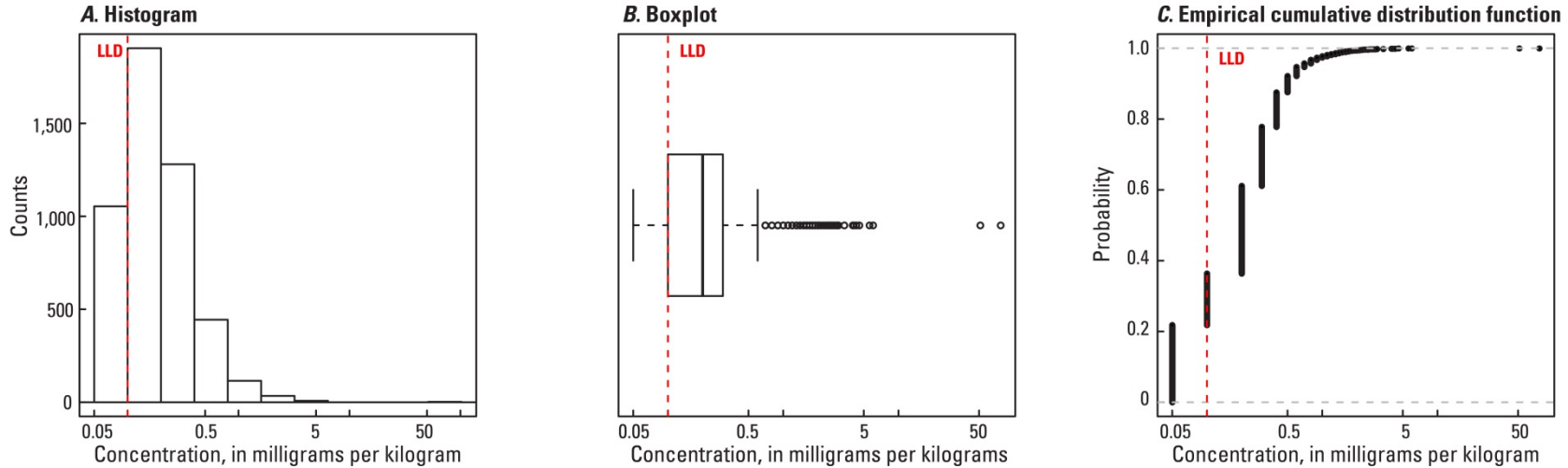
This is an excerpt from the original document.

It was downloaded from mrddata.usgs.gov/soilgeochemistry;

A link to download the full document (U.S. Geological Survey Open-File Report 2014-1082, 400 pages, 170 MB) can be found there or at <http://pubs.usgs.gov/of/2014/1082>.

These maps and statistical graphics were derived from data published in U.S. Geological Survey Data Series 801, downloadable from <http://pubs.usgs.gov/ds/801>.

Cadmium (Cd) in soil collected from a depth of 0 to 5 centimeters



Number of samples = 4,841
 LLD = 0.1 milligrams per kilogram
 Number below LLD = 1,054
 Minimum = <0.1 milligrams per kilogram
 5 percentile = <0.1 milligrams per kilogram
 25 percentile = 0.1 milligrams per kilogram
 50 percentile = 0.2 milligrams per kilogram
 75 percentile = 0.3 milligrams per kilogram
 95 percentile = 0.7 milligrams per kilogram
 Maximum = 76.8 milligrams per kilogram
 MAD = ND
 Robust CV = ND

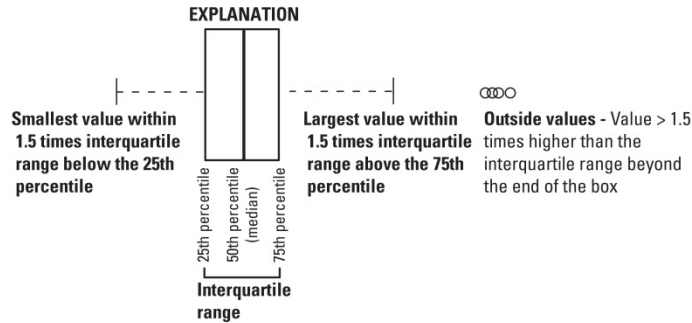


Figure 20. A, Histogram and summary statistics; B, Boxplot; C, Empirical cumulative distribution function; and D, Distribution of cadmium (Cd) in surface soils collected from a depth of 0 to 5 centimeters, conterminous United States (LLD, lower limit of determination; MAD, median absolute deviation; CV, coefficient of variation; ND, not determined; mg/kg, milligrams per kilogram; cm, centimeters).

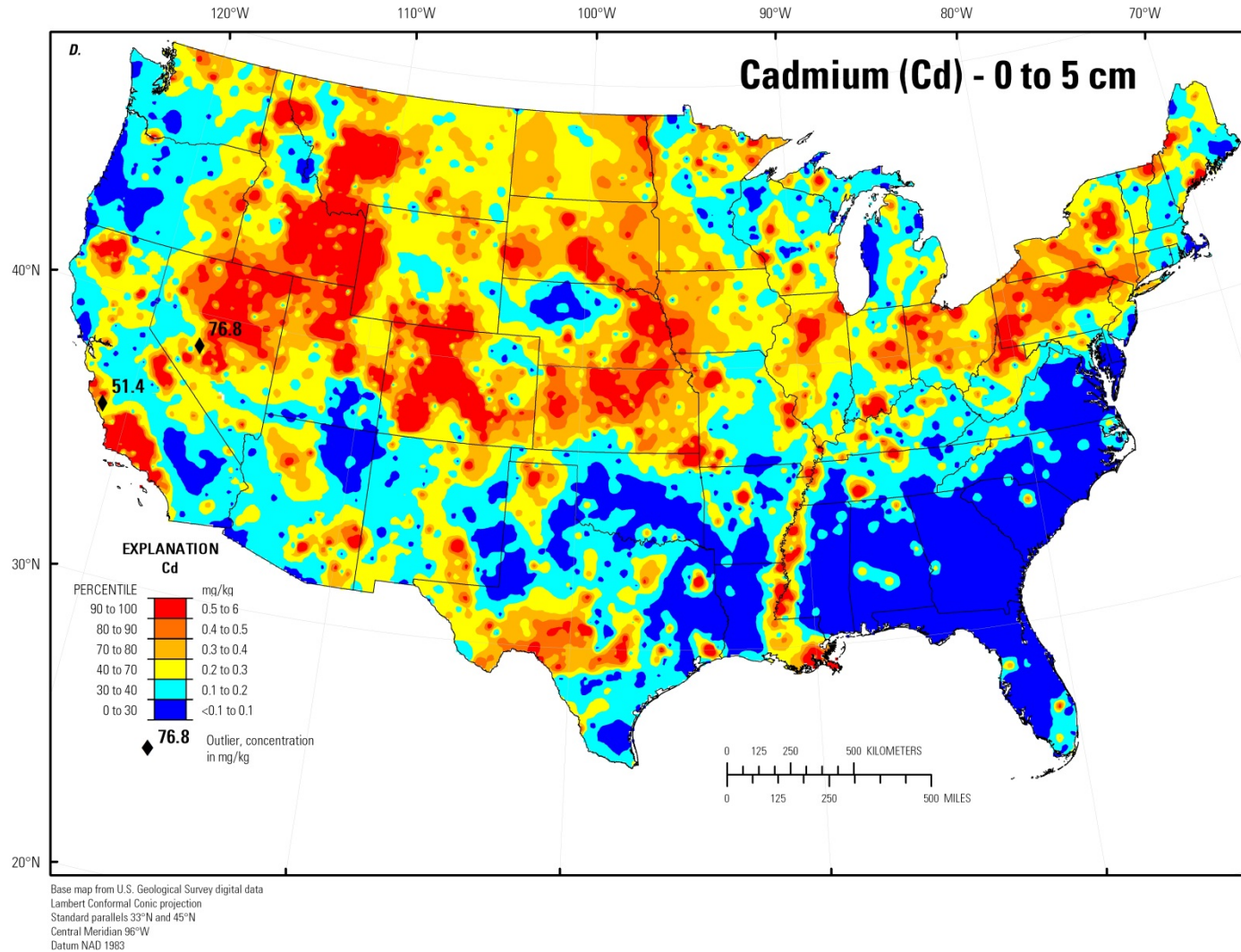
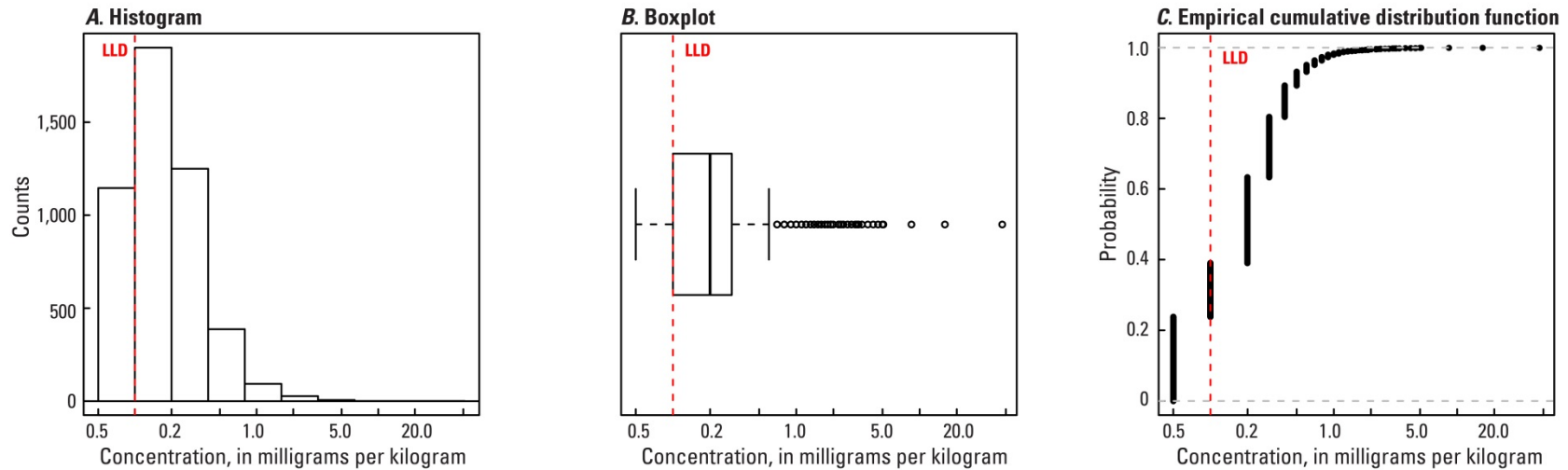


Figure 20. A, Histogram and summary statistics; B, Boxplot; C, Empirical cumulative distribution function; and D, Distribution of cadmium (Cd) in surface soils collected from a depth of 0 to 5 centimeters, conterminous United States (LLD, lower limit of determination; MAD, median absolute deviation; CV, coefficient of variation; ND, not determined; mg/kg, milligrams per kilogram; cm, centimeters).—Continued

Cadmium (Cd) in soil A horizon



Number of samples = 4,813
 LLD = 0.1 milligrams per kilogram
 Number below LLD = 1,146
 Minimum = <0.1 milligrams per kilogram
 5 percentile = <0.1 milligrams per kilogram
 25 percentile = 0.1 milligrams per kilogram
 50 percentile = 0.2 milligrams per kilogram
 75 percentile = 0.3 milligrams per kilogram
 95 percentile = 0.6 milligrams per kilogram
 Maximum = 46.6 milligrams per kilogram
 MAD = ND
 Robust CV = ND

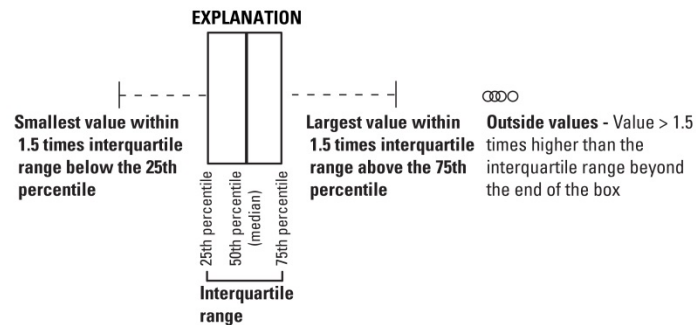


Figure 21. A, Histogram and summary statistics; B, Boxplot; C, Empirical cumulative distribution function; and D, Distribution of cadmium (Cd) in the soil A horizon, conterminous United States (LLD, lower limit of determination; MAD, median absolute deviation; CV, coefficient of variation; ND, not determined; mg/kg, milligrams per kilogram).

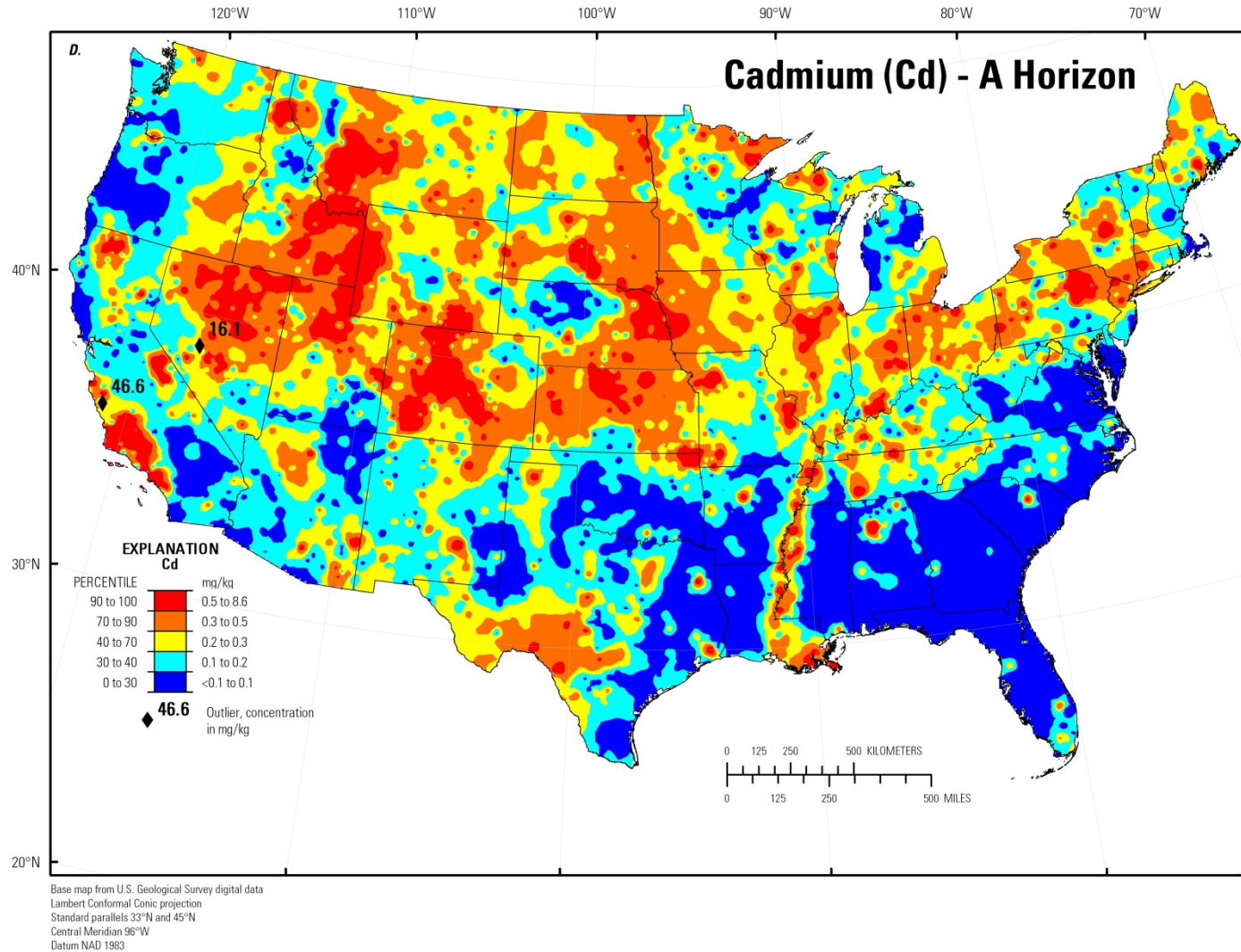
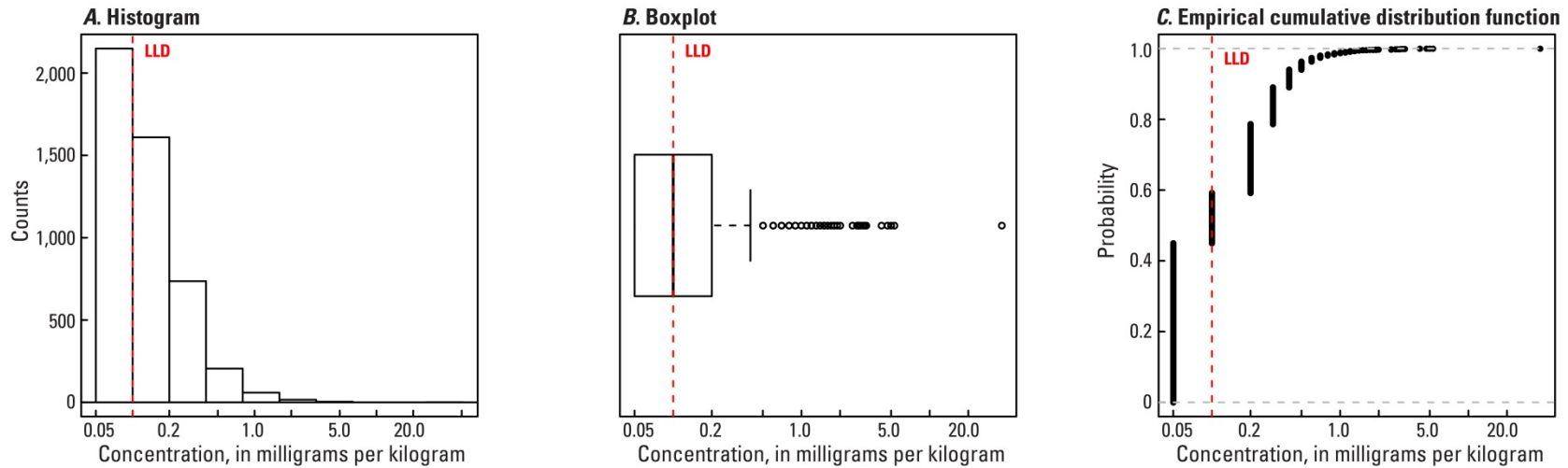


Figure 21. A, Histogram and summary statistics; B, Boxplot; C, Empirical cumulative distribution function; and D, Distribution of cadmium (Cd) in the soil A horizon, conterminous United States (LLD, lower limit of determination; MAD, median absolute deviation; CV, coefficient of variation; ND, not determined; mg/kg, milligrams per kilogram).—Continued

Cadmium (Cd) in soil C horizon



Number of samples = 4,780
 LLD = 0.1 milligrams per kilogram
 Number below LLD = 2,149
 Minimum = <0.1 milligrams per kilogram
 5 percentile = <0.1 milligrams per kilogram
 25 percentile = <0.1 milligrams per kilogram
 50 percentile = 0.1 milligrams per kilogram
 75 percentile = 0.2 milligrams per kilogram
 95 percentile = 0.5 milligrams per kilogram
 Maximum = 36.4 milligrams per kilogram
 MAD = ND
 Robust CV = ND

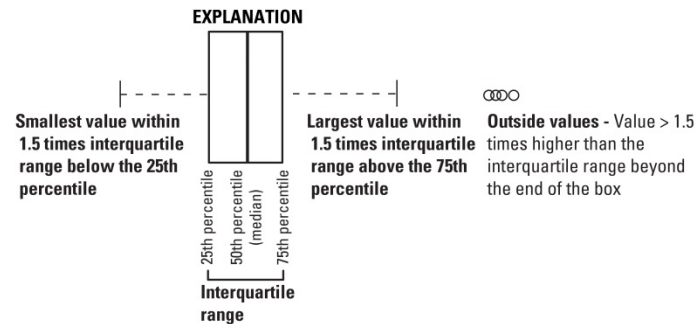


Figure 22. A, Histogram and summary statistics; B, Boxplot; C, Empirical cumulative distribution function; and D, Distribution of cadmium (Cd) in the soil C horizon, conterminous United States (LLD, lower limit of determination; MAD, median absolute deviation; CV, coefficient of variation; ND, not determined; mg/kg, milligrams per kilogram).

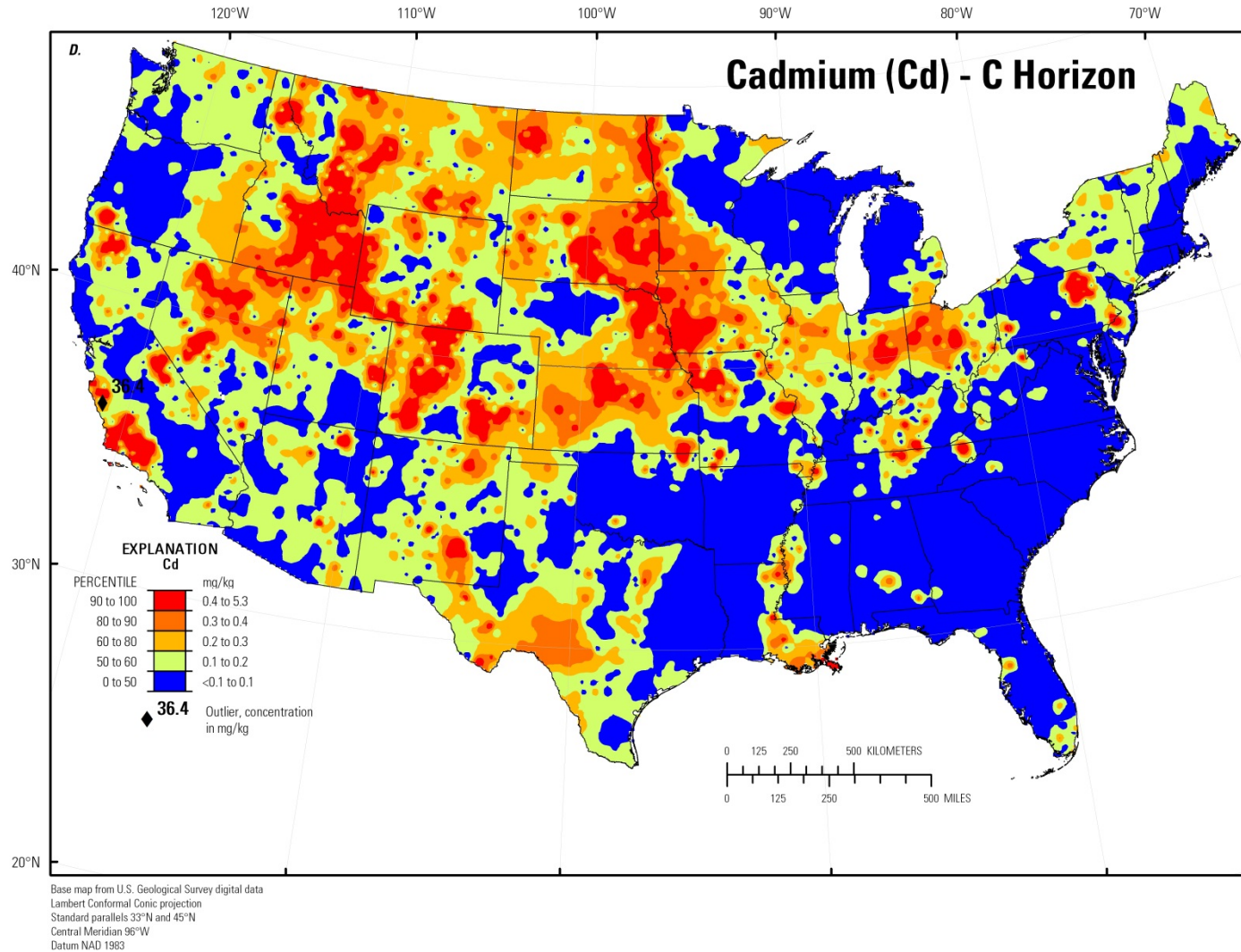


Figure 22. A, Histogram and summary statistics; B, Boxplot; C, Empirical cumulative distribution function; and D, Distribution of cadmium (Cd) in the soil C horizon, conterminous United States (LLD, lower limit of determination; MAD, median absolute deviation; CV, coefficient of variation; ND, not determined; mg/kg, milligrams per kilogram).—Continued