

Eight-panel figure adapted from Hirsch and others (2010) to evaluate models for the NWQN method

Colorado River at NIB above Morelos Dam, Arizona (U.S. Geological Survey station 09522000)

Constituent: Total Nitrogen

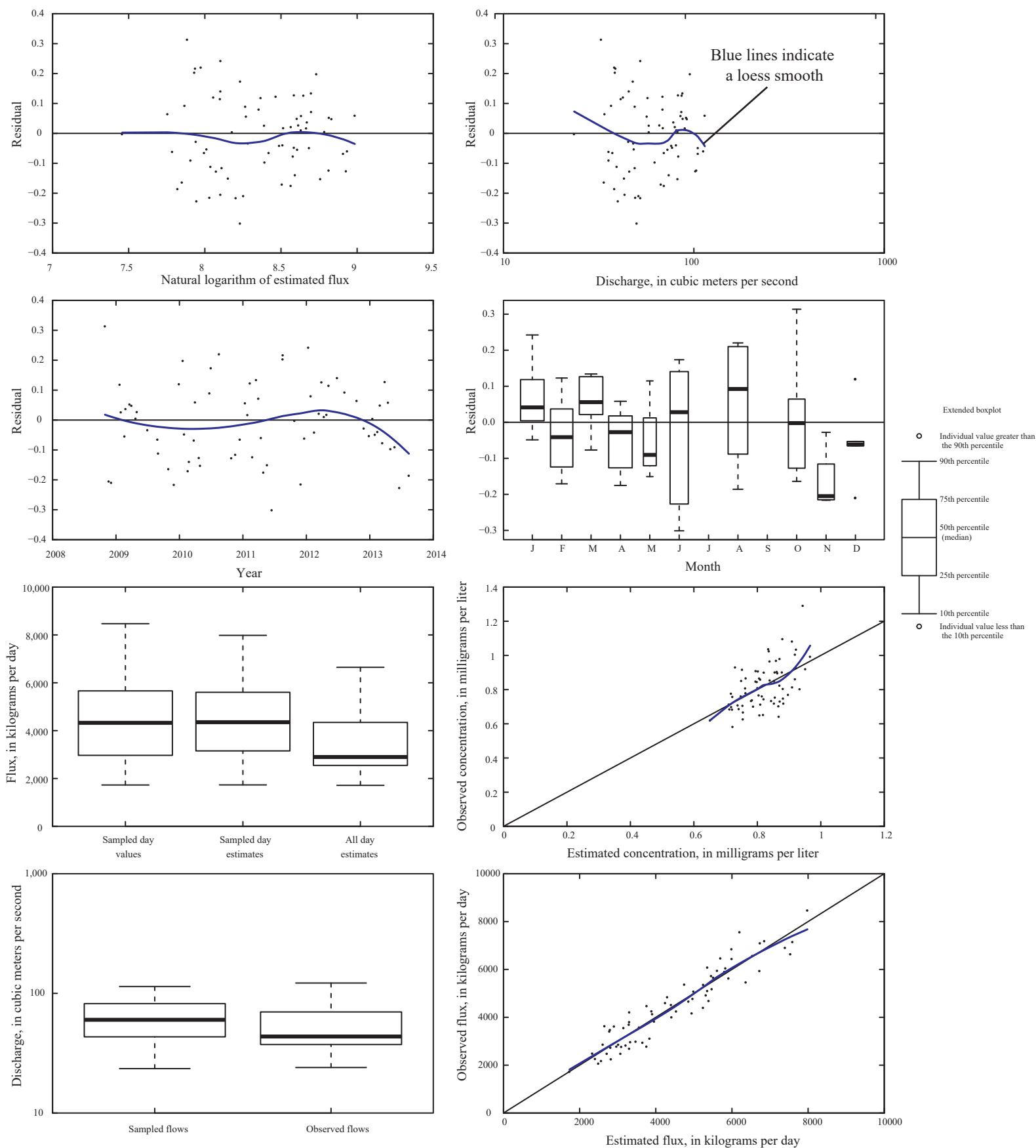


Figure 6.1

Comparison of observed versus estimated daily constituent loads by water year.

Colorado River at NIB above Morelos Dam, Arizona (U.S. Geological Survey station 09522000)

Constituent: Total Nitrogen

[water year, the 12-month period from October 1 to September 30 and is designated by the year in which it ends; $\ln Q$, natural logarithm of daily streamflow; $dtime$, decimal time; $fa_{100min365dayall}$, long term flow anomaly]

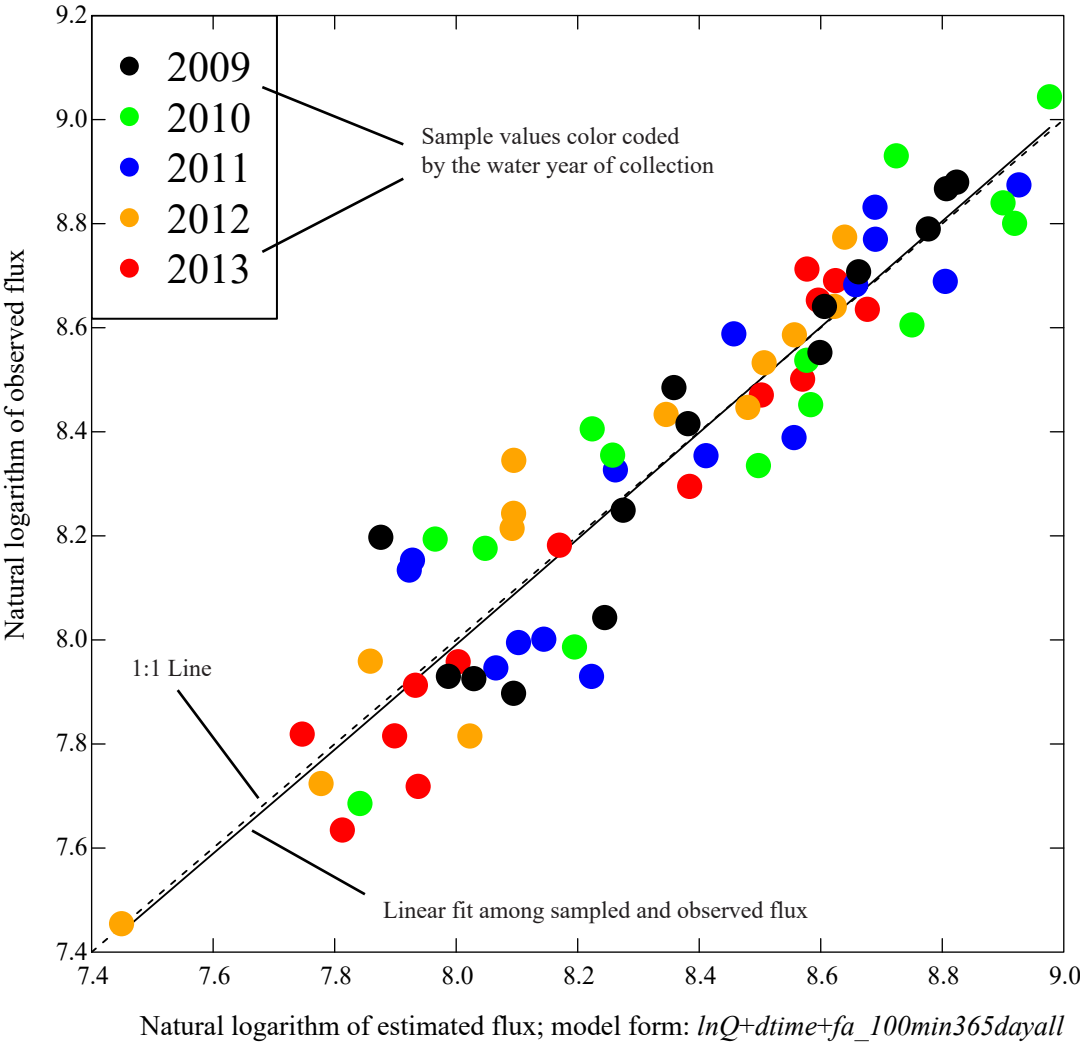


Figure 6.2

Comparison of NWQN, AIC, and PVAL method errors among water-quality constituents

[NWQN, National Water Quality Network sampling; AIC, LOADEST minimum Akaike information criteria method with additional explanatory variables; PVAL, LOADEST minimum probability-value method with additional explanatory variables; ±, plus or minus; %, percent]

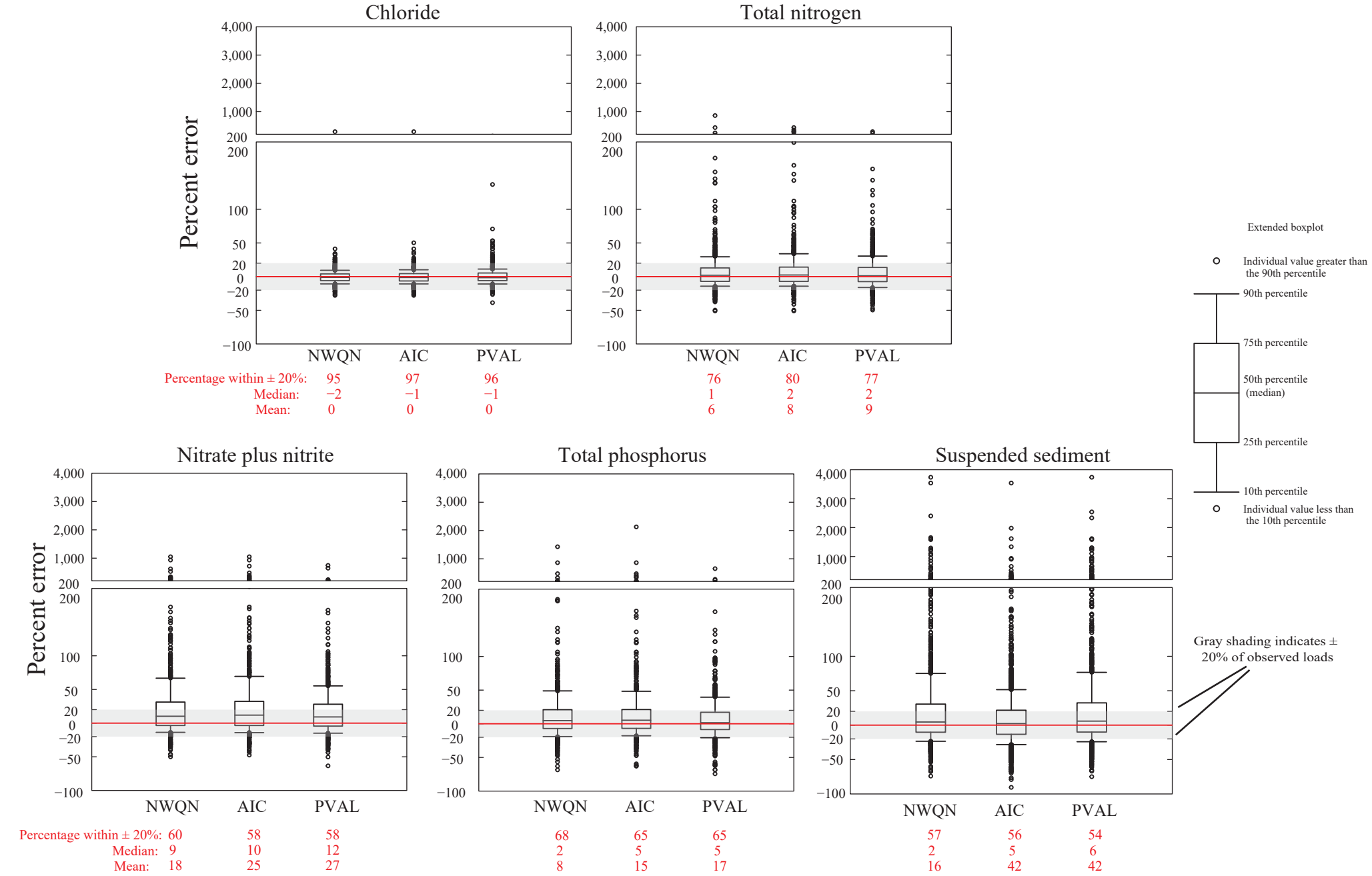


Figure 6.3