

Figure 4.1. Flood-inundation areas for the 1- and 0.2-percent annual-exceedance probability floods and a regulatory floodway along Broad-Monter Creek, Stark County, Ohio.

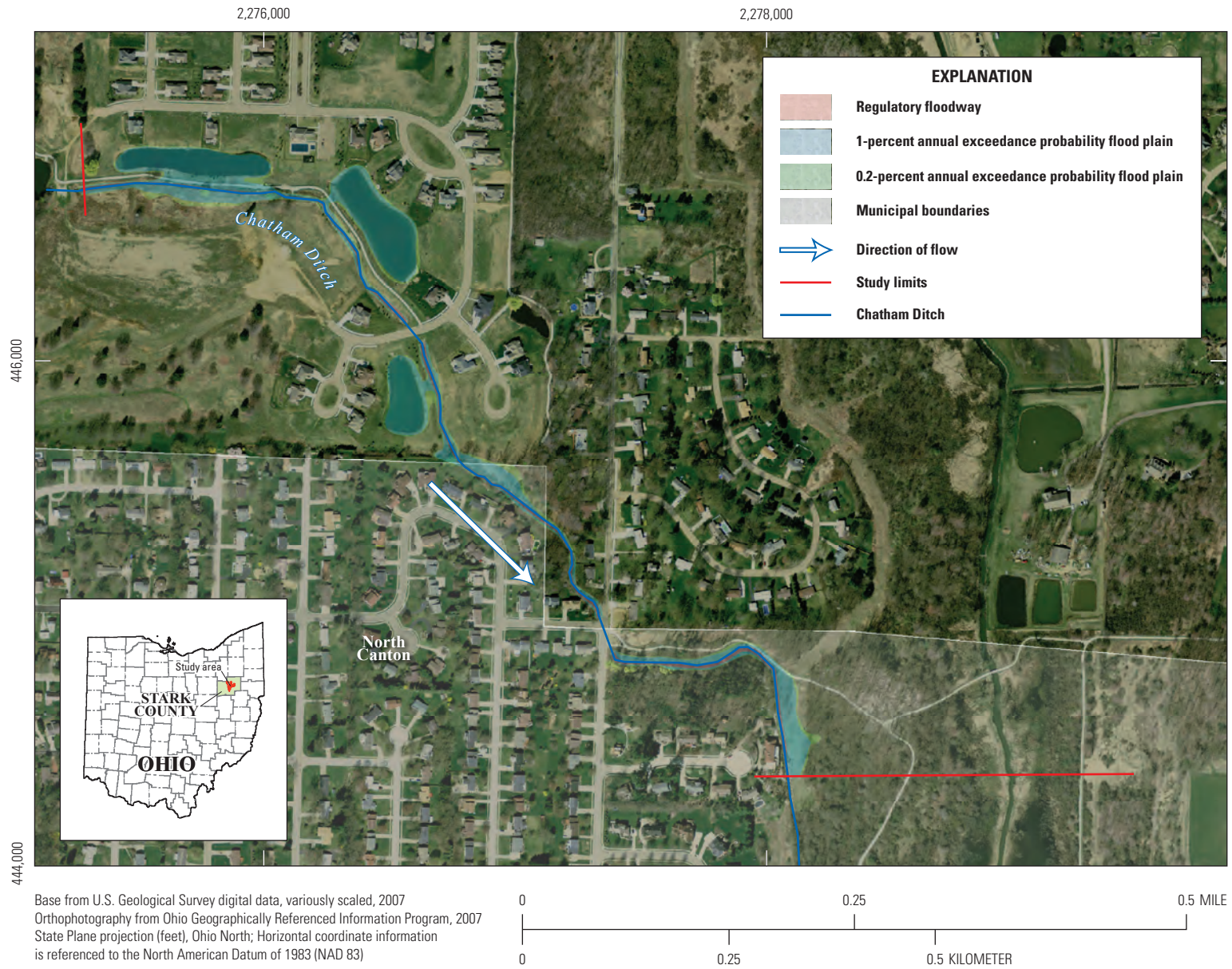


Figure 4.2. Flood-inundation areas for the 1- and 0.2-percent annual exceedance probability floods and a regulatory floodway along Chatham Ditch, Stark County, Ohio.

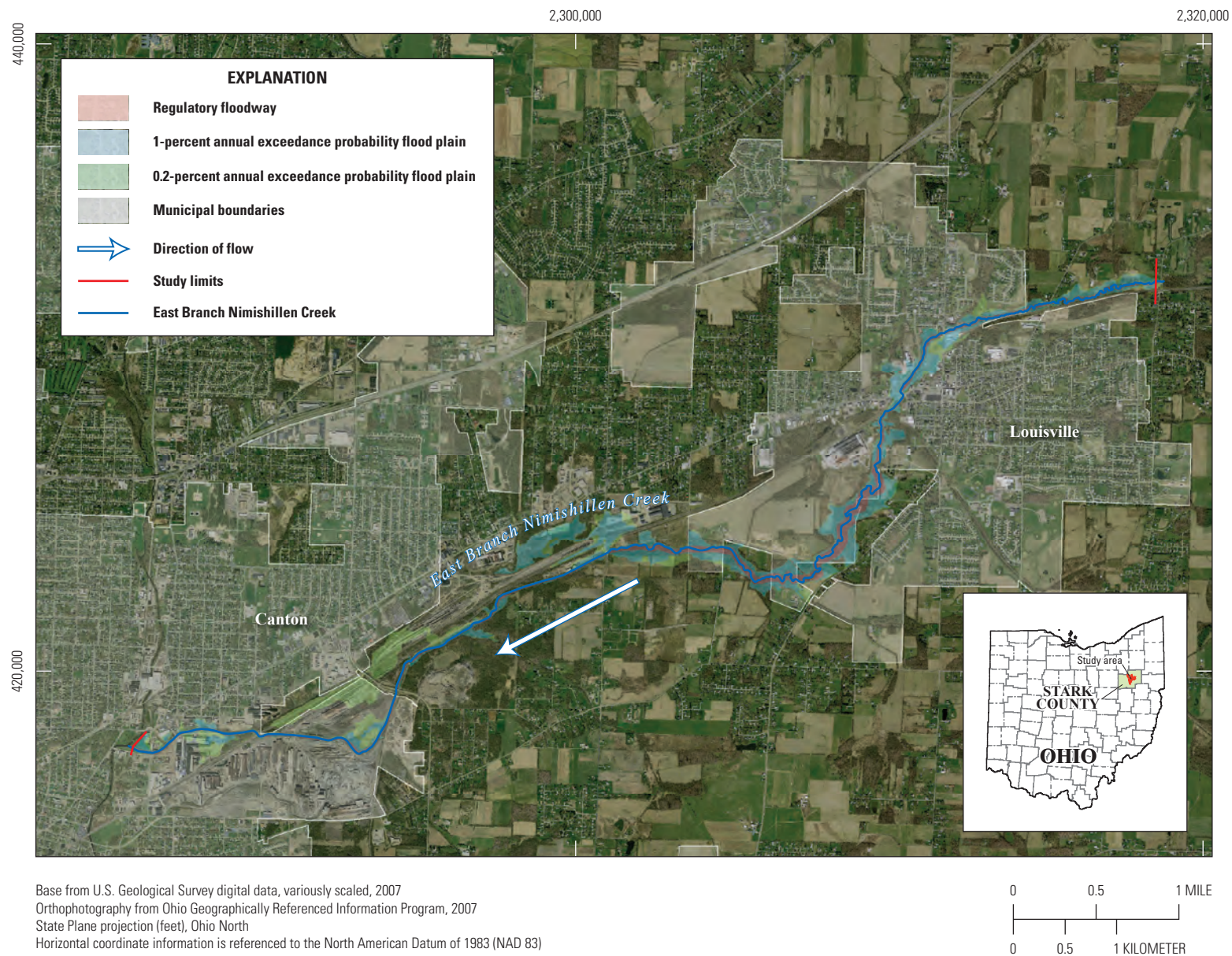


Figure 4.3. Flood-inundation areas for the 1- and 0.2-percent annual exceedance probability floods and a regulatory floodway along East Branch Nimishillen Creek, Stark County, Ohio.

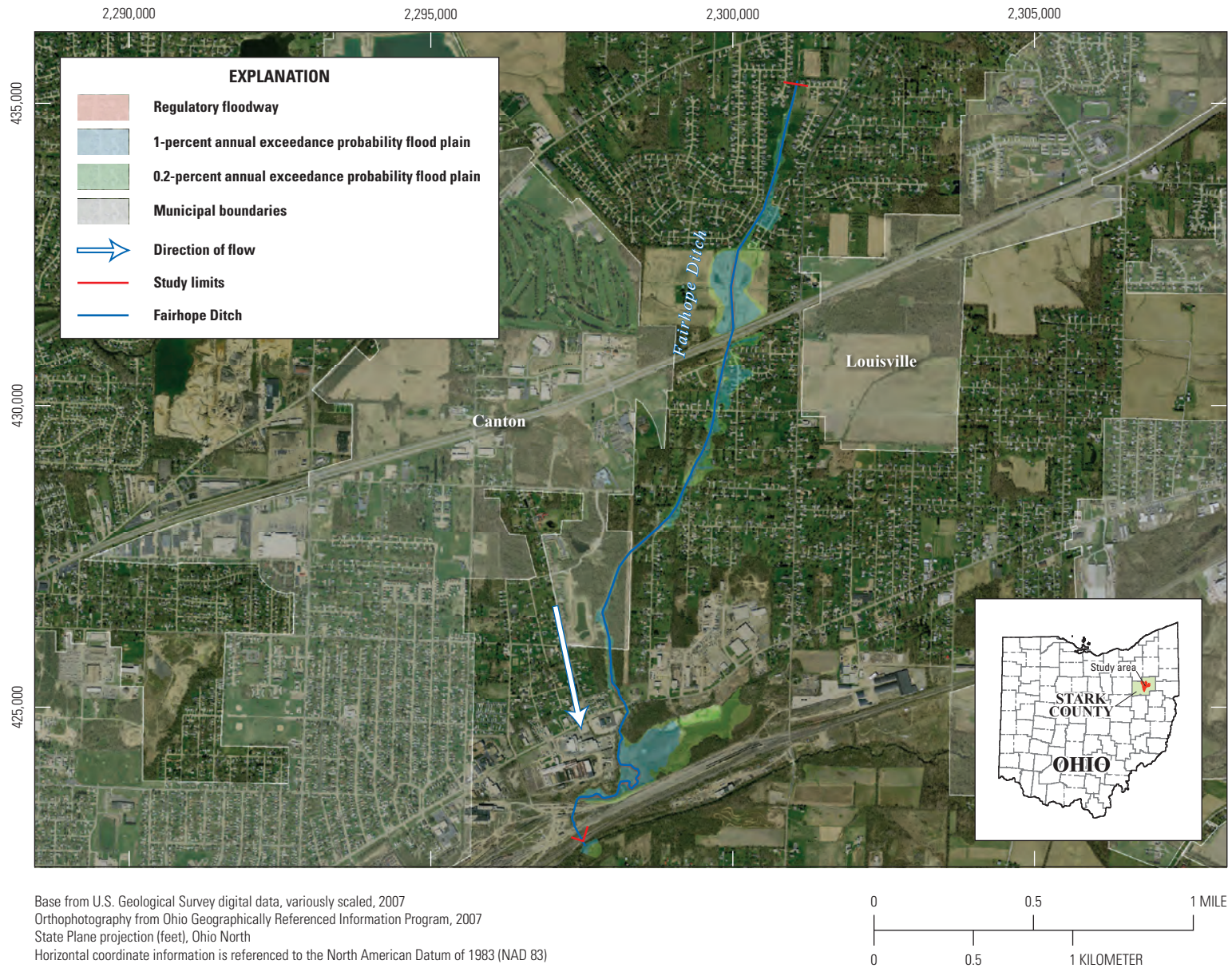


Figure 4.4. Flood-inundation areas for the 1- and 0.2-percent annual exceedance probability floods and a regulatory floodway along Fairhope Ditch, Stark County, Ohio.

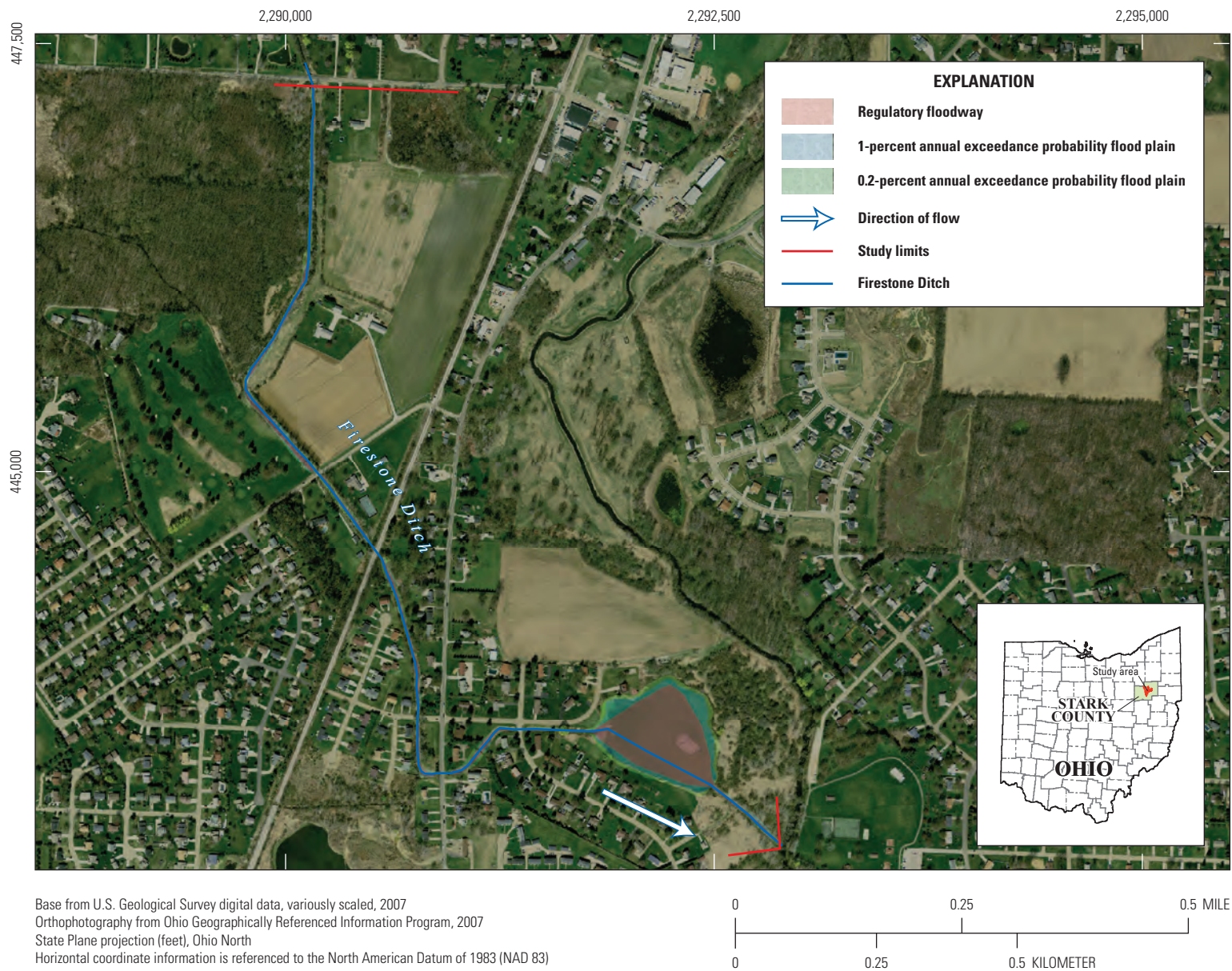


Figure 4.5. Flood-inundation areas for the 1- and 0.2-percent annual exceedance probability floods and a regulatory floodway along Firestone Ditch, Stark County, Ohio.

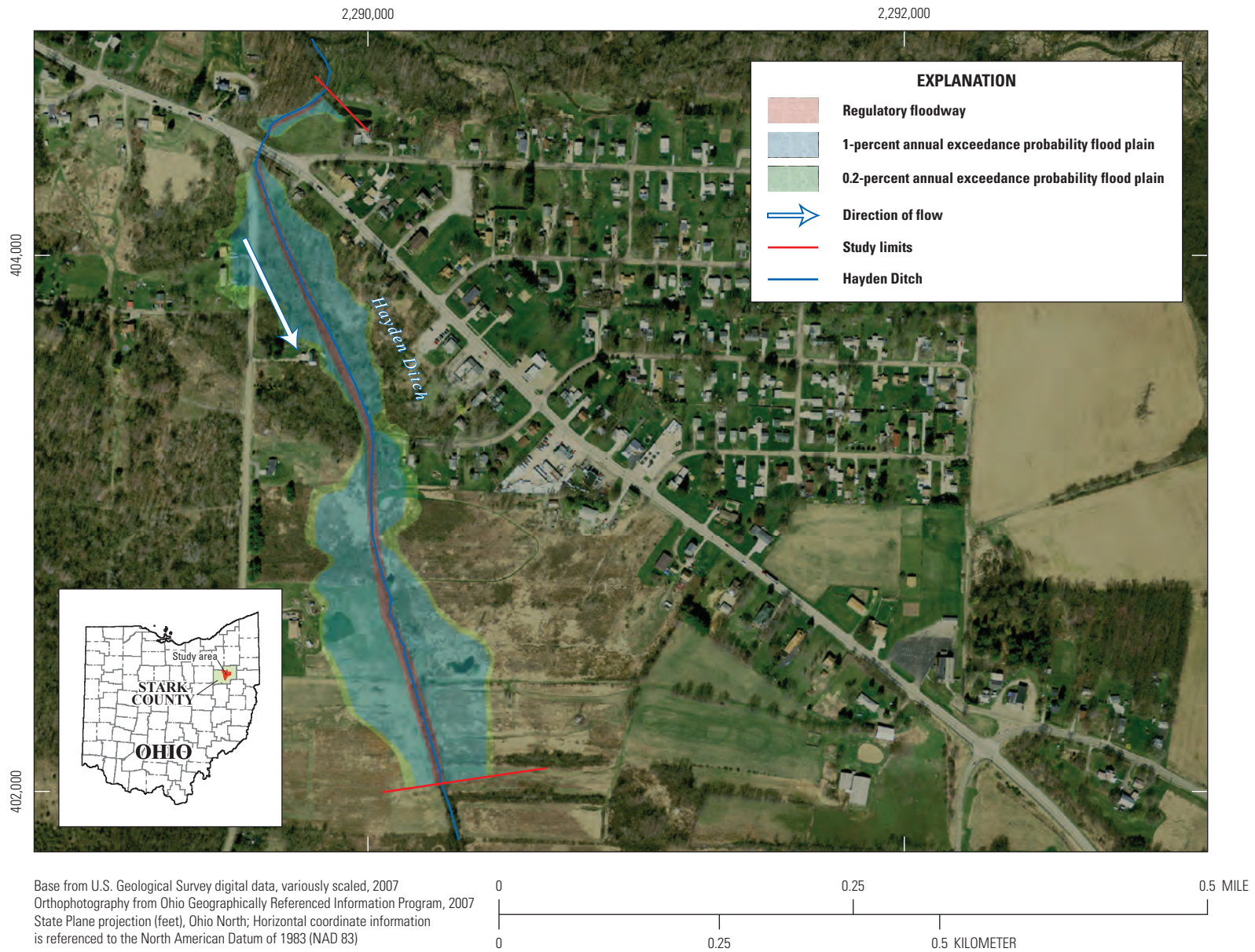
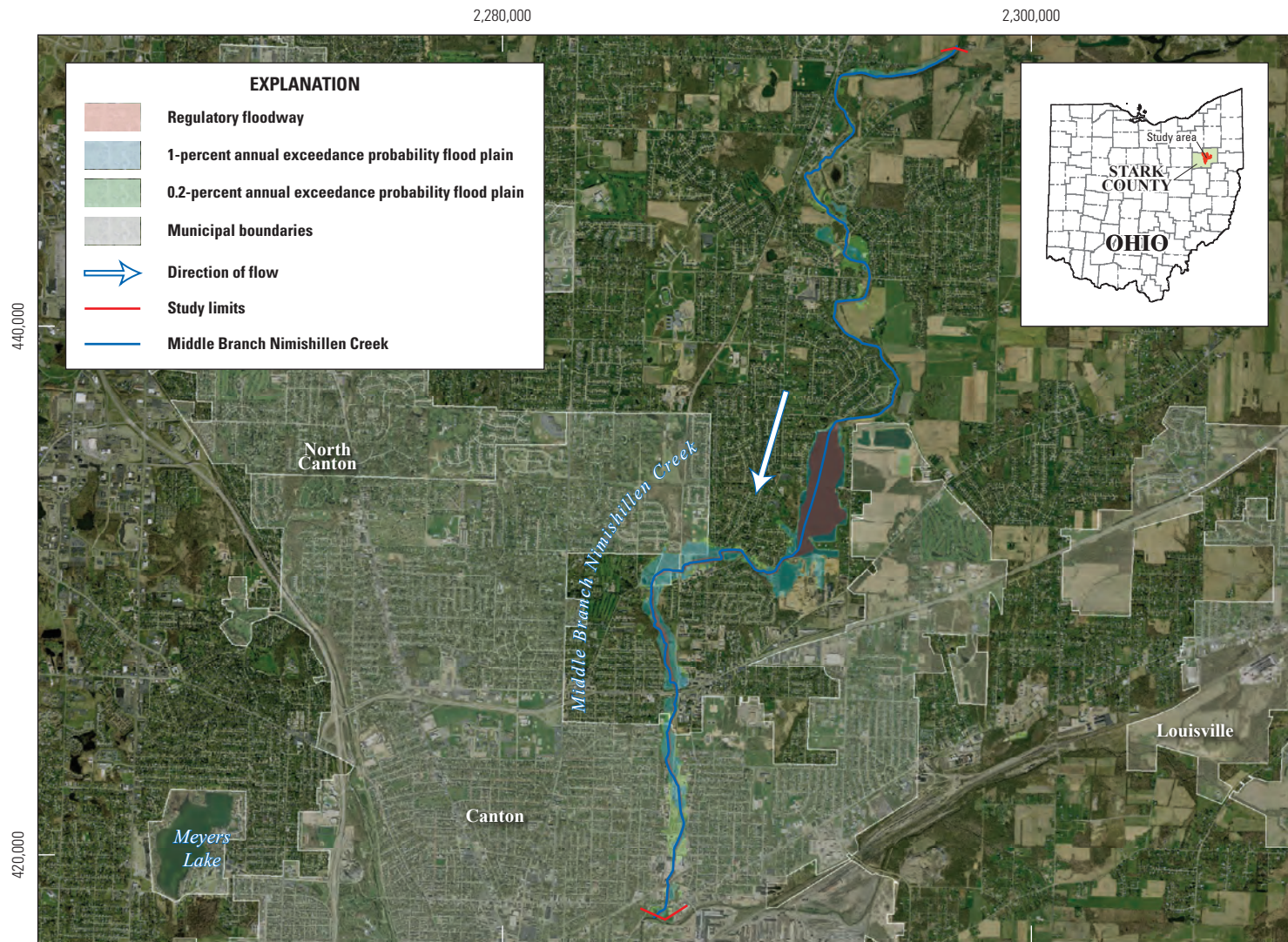


Figure 4.6. Flood-inundation areas for the 1- and 0.2-percent annual exceedance probability floods and a regulatory floodway along Hayden Ditch, Stark County, Ohio.



Base from U.S. Geological Survey digital data, variously scaled, 2007
 Orthophotography from Ohio Geographically Referenced Information Program, 2007
 State Plane projection (feet), Ohio North
 Horizontal coordinate information is referenced to the North American Datum of 1983 (NAD 83)

Figure 4.7. Flood-inundation areas for the 1- and 0.2-percent annual exceedance probability floods and a regulatory floodway along Middle Branch Nimishillen Creek, Stark County, Ohio.

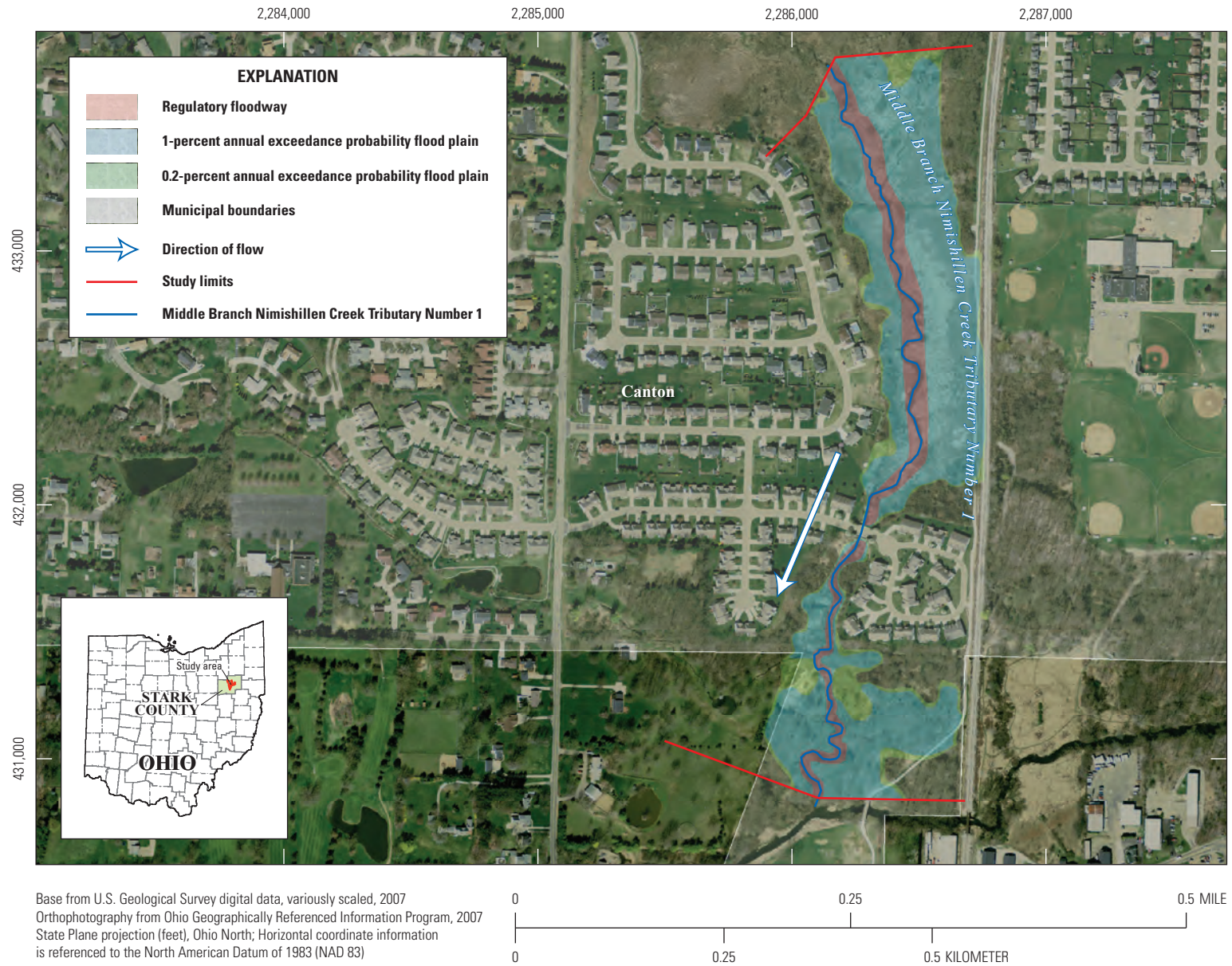
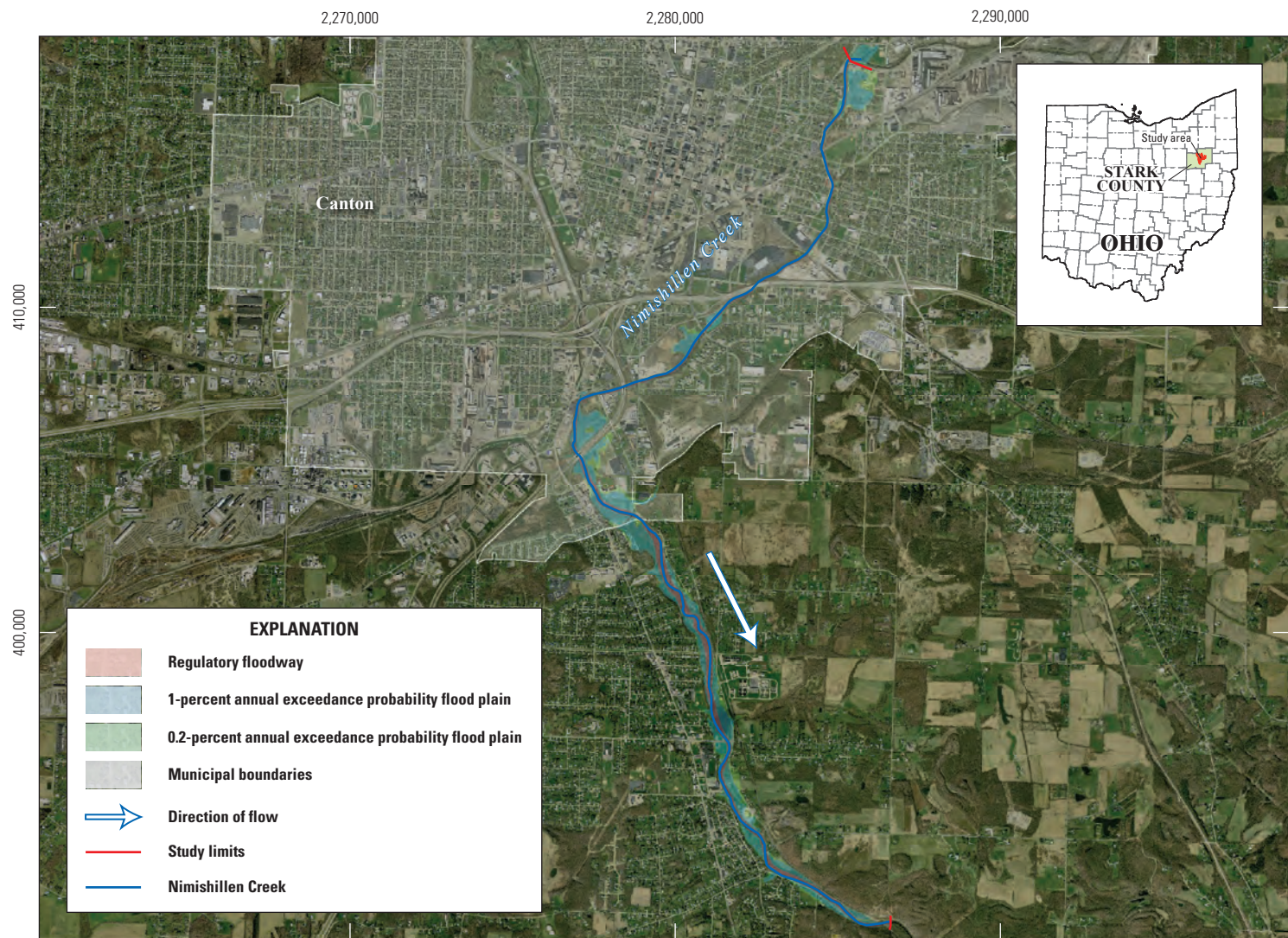


Figure 4.8. Flood-inundation areas for the 1- and 0.2-percent annual exceedance probability floods and a regulatory floodway along Middle Branch Nimishillen Creek Tributary Number 1, Stark County, Ohio.



Base from U.S. Geological Survey digital data, variously scaled, 2007
 Orthophotography from Ohio Geographically Referenced Information Program, 2007
 State Plane projection (feet), Ohio North
 Horizontal coordinate information is referenced to the North American Datum of 1983 (NAD 83)

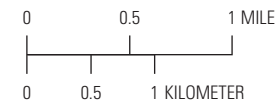


Figure 4.9. Flood-inundation areas for the 1- and 0.2-percent annual exceedance probability floods and a regulatory floodway along Nimishillen Creek, Stark County, Ohio.

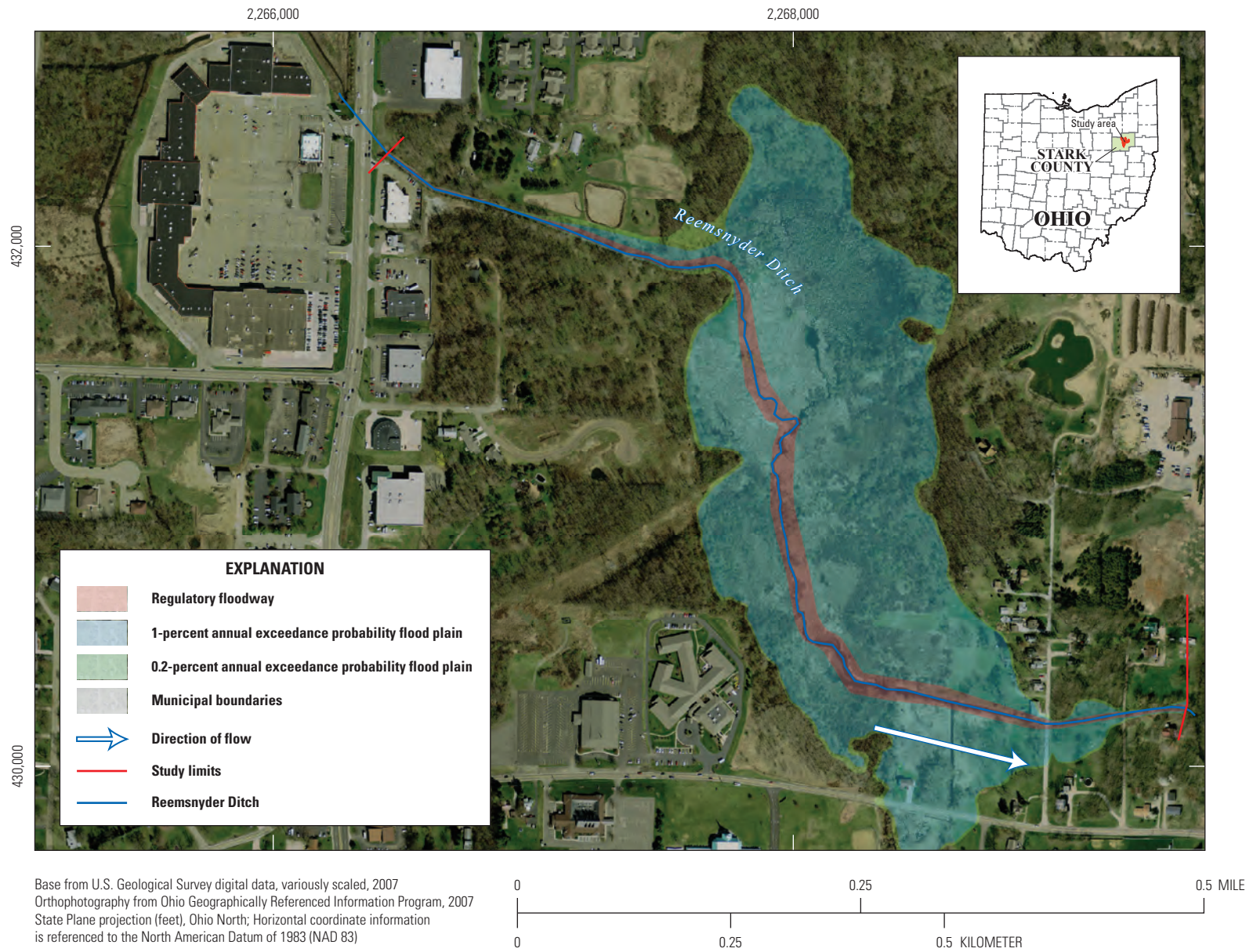


Figure 4.10. Flood-inundation areas for the 1- and 0.2-percent annual exceedance probability floods and a regulatory floodway along Reemsnyder Ditch, Stark County, Ohio.

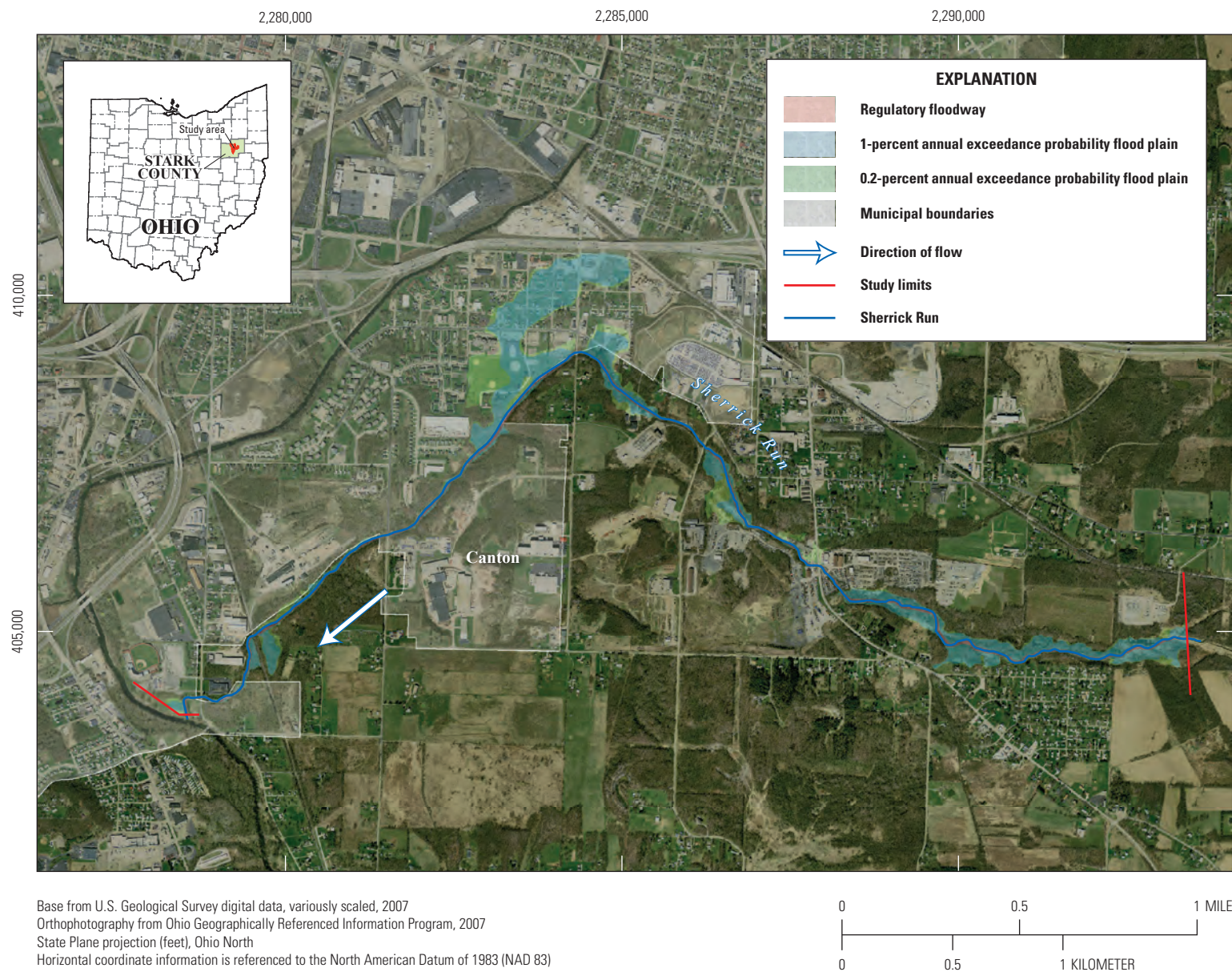


Figure 4.11. Flood-inundation areas for the 1- and 0.2-percent annual exceedance probability floods and a regulatory floodway along Sherrick Run, Stark County, Ohio.

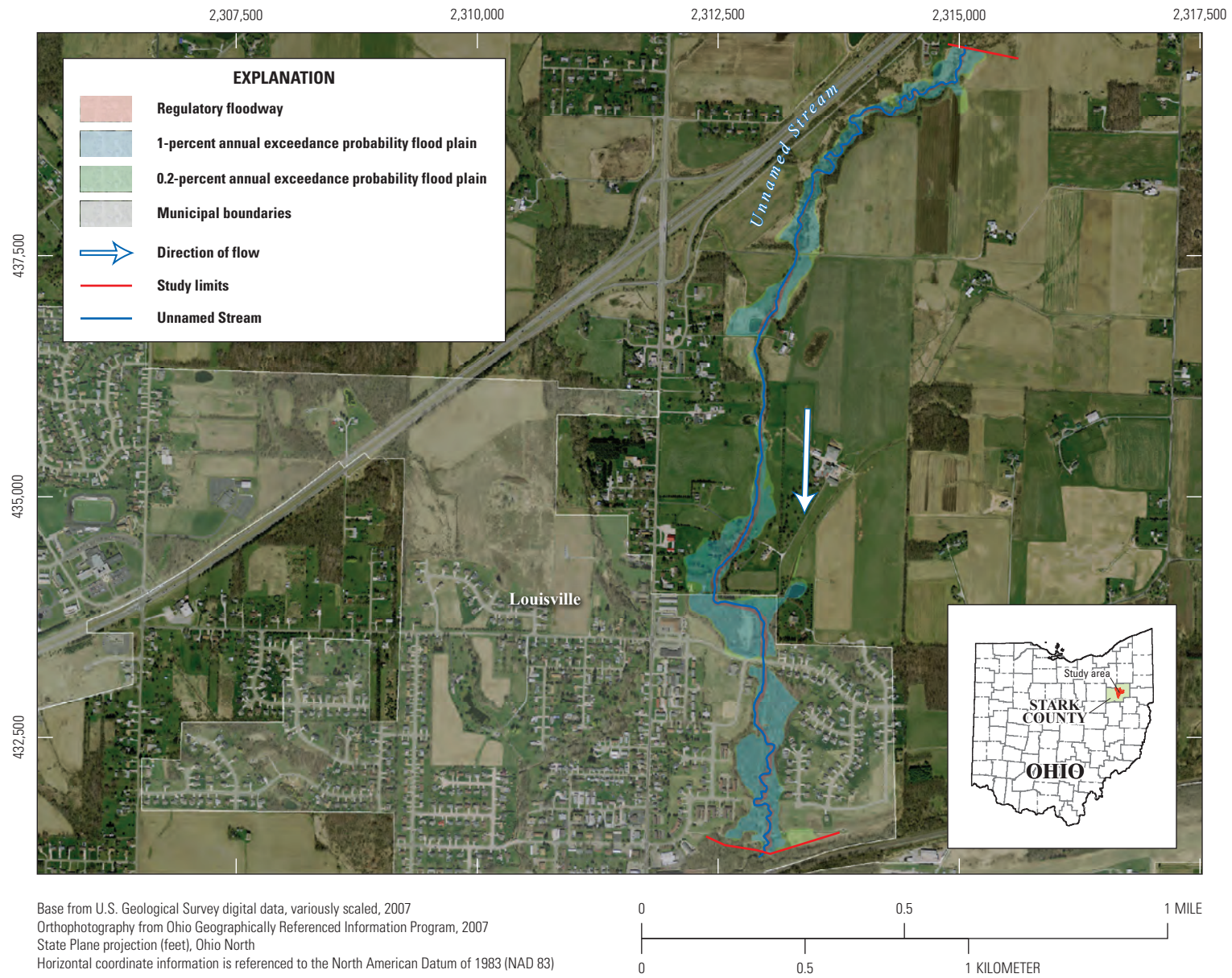


Figure 4.12. Flood-inundation areas for the 1- and 0.2-percent annual exceedance probability floods and a regulatory floodway along unnamed stream, Stark County, Ohio.

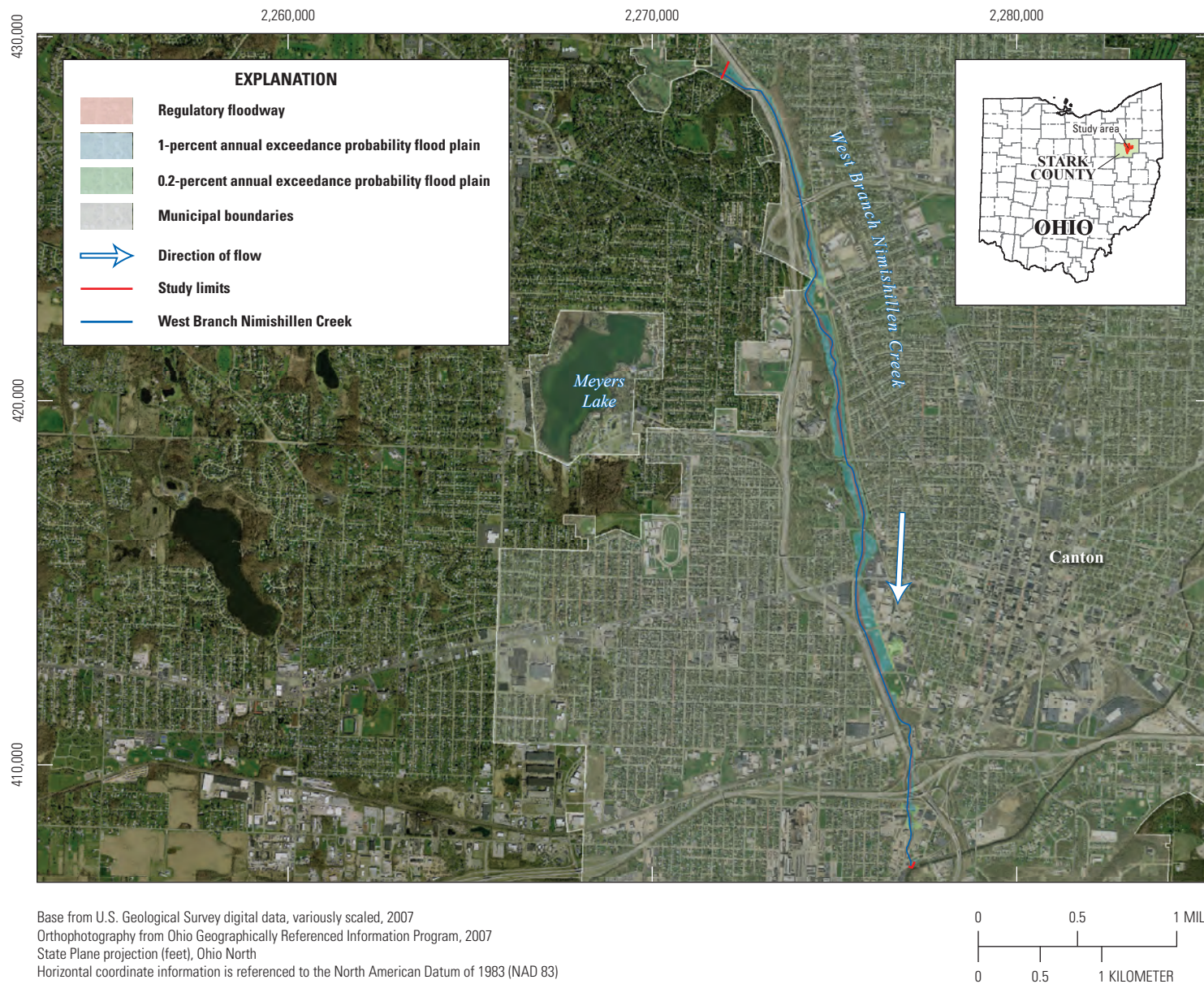


Figure 4.13. Flood-inundation areas for the 1- and 0.2-percent annual exceedance probability floods and a regulatory floodway along West Branch Nimishillen Creek, Stark County, Ohio.

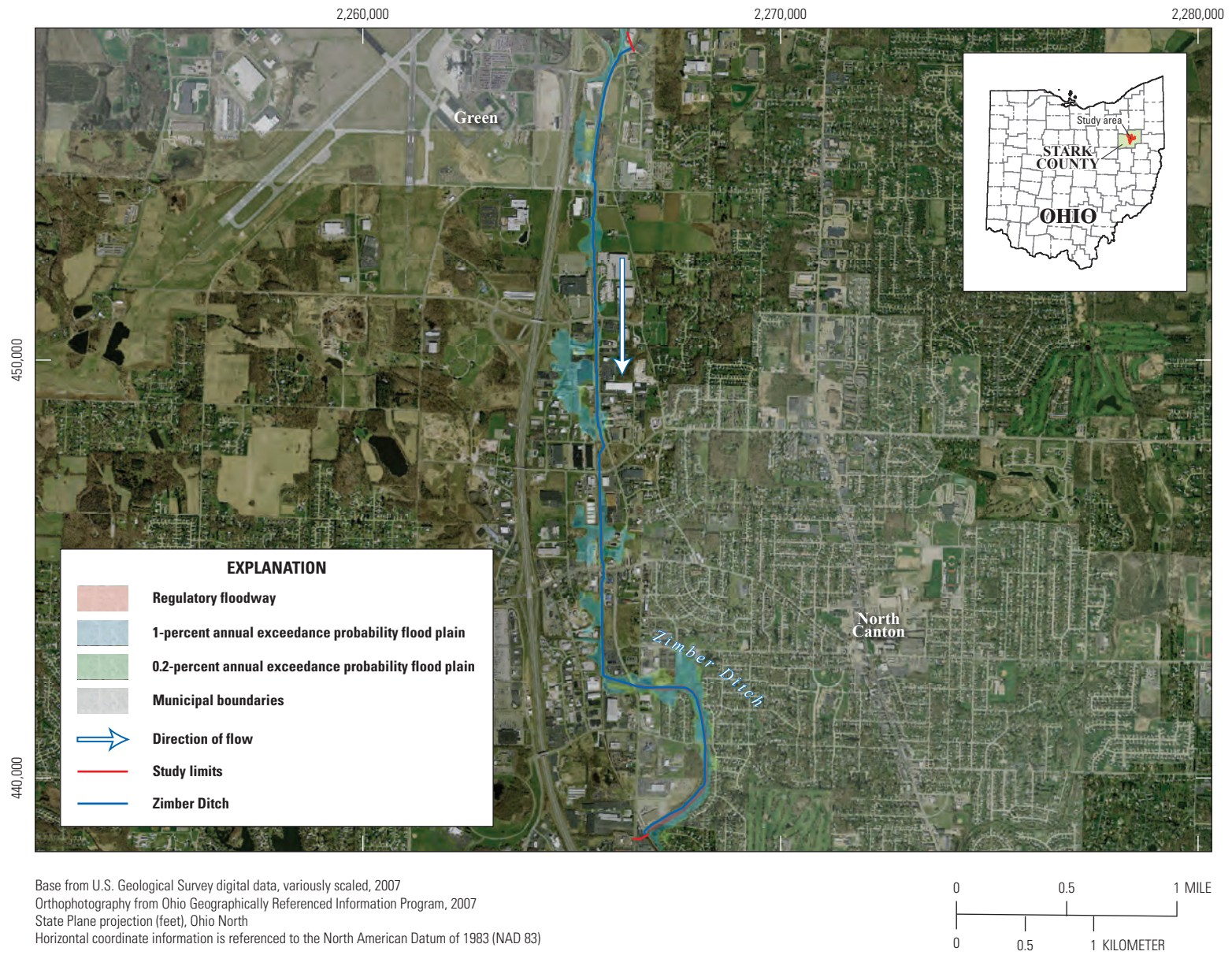


Figure 4.14. Flood-inundation areas for the 1- and 0.2-percent annual exceedance probability floods and a regulatory floodway along Zimber Ditch, Stark County, Ohio.