

Appendix 2. Drought in Maine in 2022

The effects of the 2022 drought varied within Maine. In northern Maine, all streamgages experienced normal to above normal flows from April to September (fig. 3A) and did not drop below the low flow conditions experienced in summer 2020, as indicated at the St. John River below Fish River near Fort Kent, Maine (01014000) U.S. Geological Survey (USGS) streamgage (fig. 2.1A). In central and southern Maine, all nine streamgages experienced below normal flows in May, with two of those streamgages experiencing flows much below normal (fig. 3A). Some streamgages, such as the Little Androscoggin River near South Paris, Maine (01057000) experienced lower than normal flows in May, June, and July, and in some instances dropped below flows observed in 2020 (fig. 2.1B). Flow at all streamgages in Maine returned to normal or above normal conditions in August and September (fig. 3A).

Groundwater levels also varied across Maine in 2022, with many indicating less severe drought conditions than in 2020. The lowest water levels were in July and August, with three and four wells, respectively, of eight, indicating below normal conditions, and almost all were in the southwestern part of the State (fig. 3B). The ME–OW1214 Oxford, Maine (440823070291501) USGS monitoring well recorded a 25-year low in June, July, and August (fig. 2.2A). There are a limited number of USGS groundwater monitoring wells in much of central Maine. In northern Maine, the ME–ARW890 Fort Kent, Maine (471457068353001) USGS monitoring well had normal to above normal water levels throughout the period studied in 2022, exceeding water levels from April through September for many of the years in the period of record (fig. 2.2B).

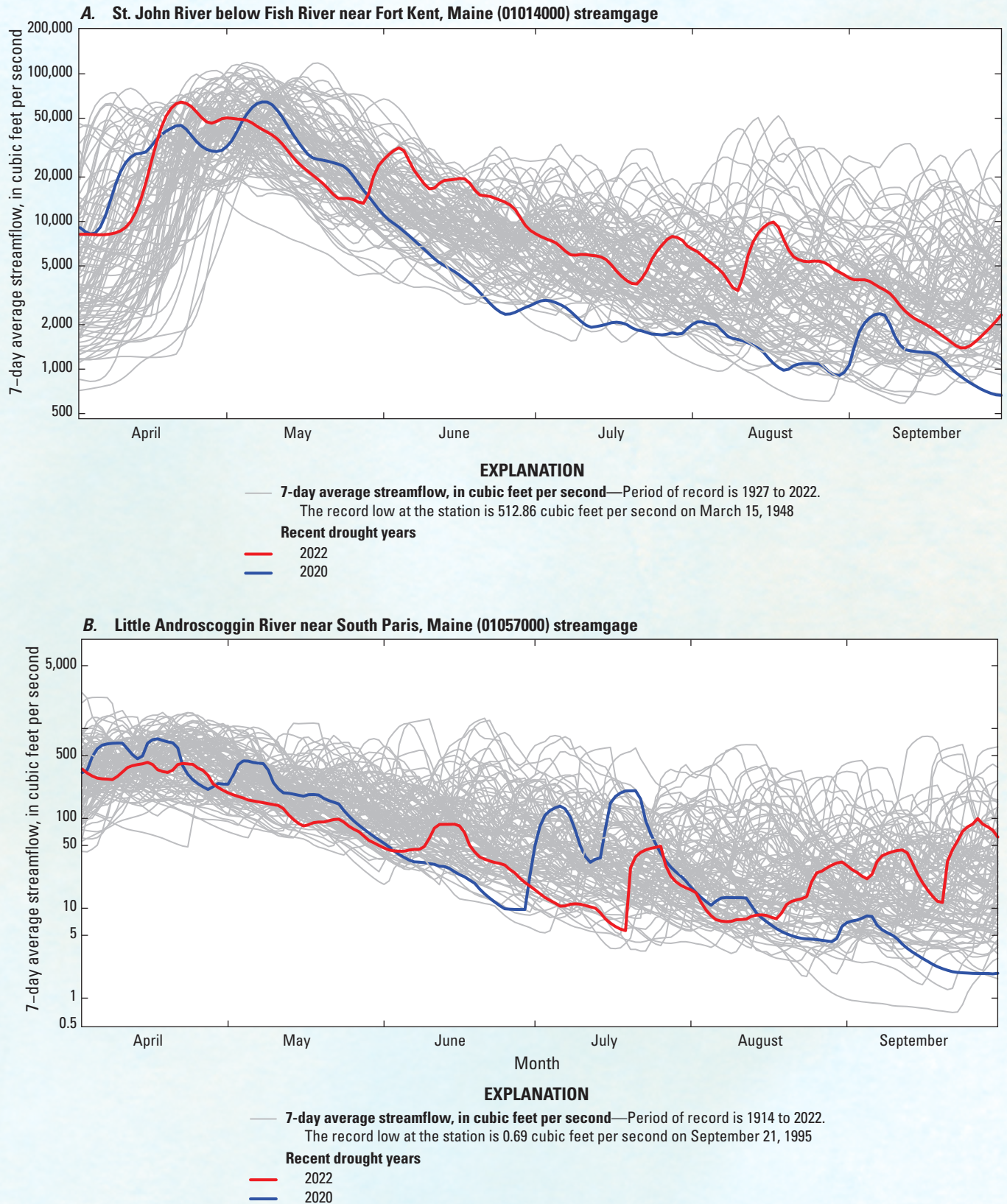


Figure 2.1. Graphs showing the moving average 7-day flows at the A, St. John River below Fish River near Fort Kent, Maine (01014000) and B, Little Androscoggin River near South Paris, Maine (01057000) U.S. Geological Survey streamgages for April through September for their periods of record.

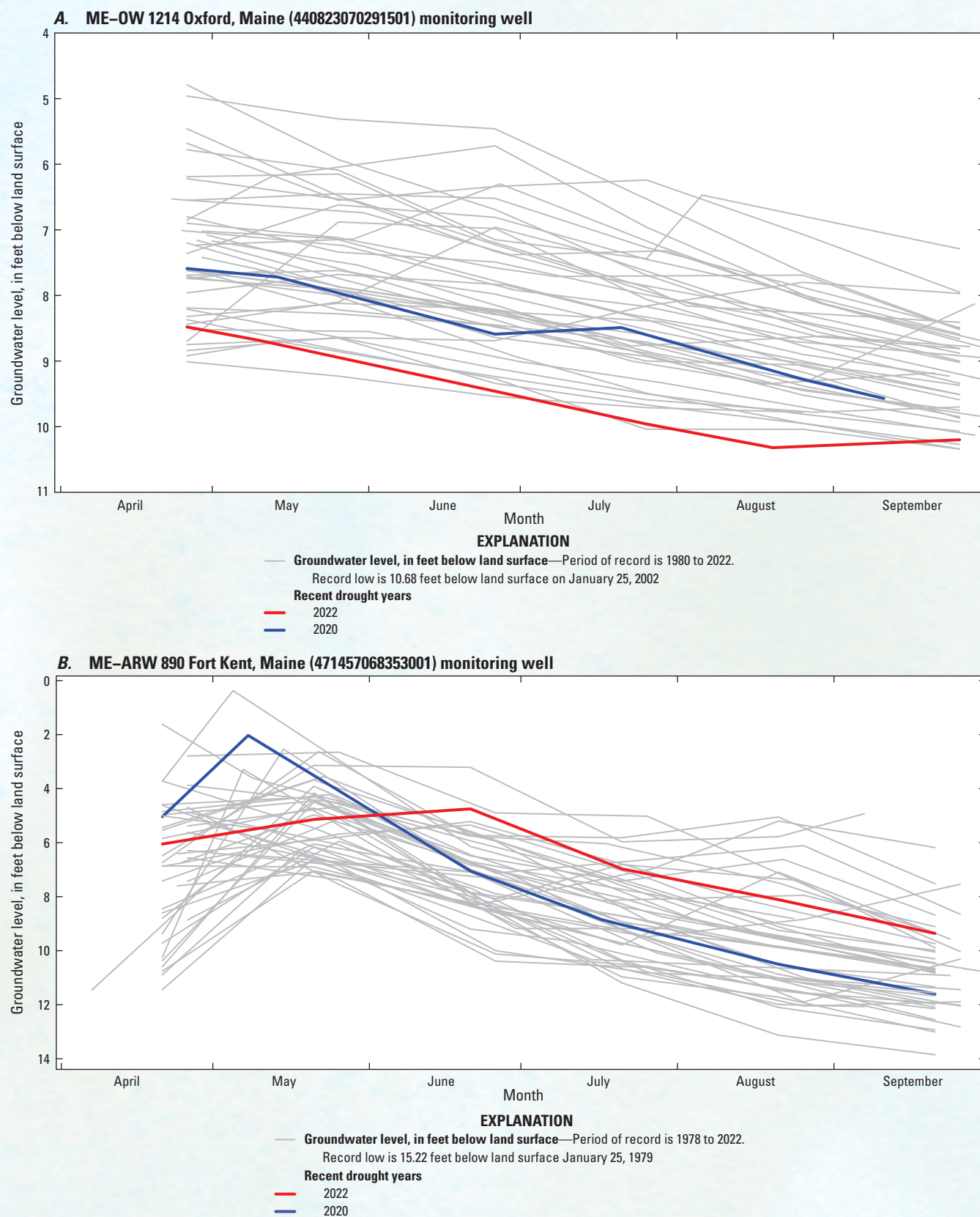


Figure 2.2. Graphs showing monthly groundwater levels at the A, ME-OW 1214 Oxford, Maine (440823070291501) and B, ME-ARW 890 Fort Kent, Maine (471457068353001) monitoring wells for April through September for their periods of record.