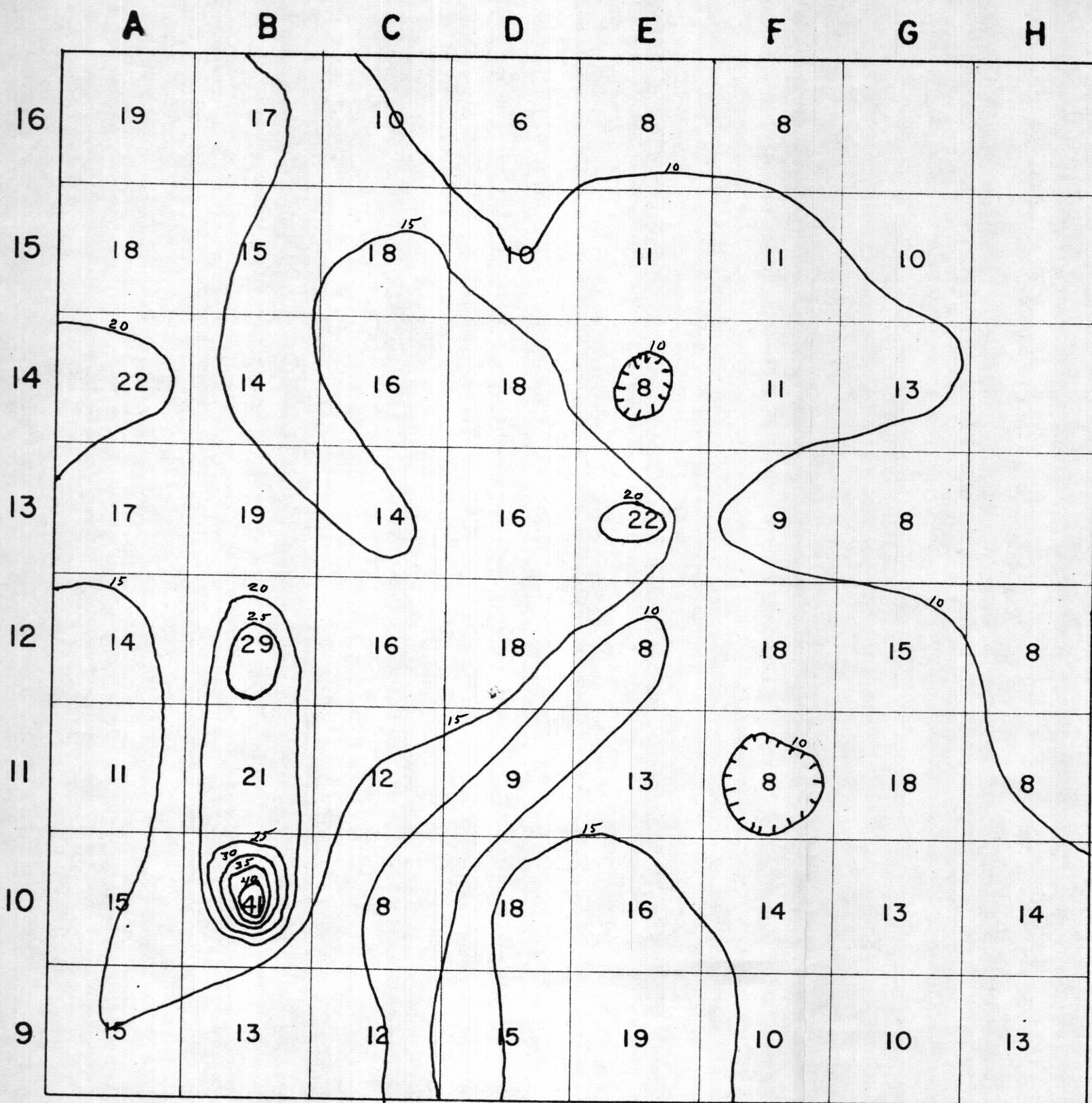


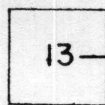
FOR OFFICIAL USE ONLY FIGURE No. 3



NW 1/4, S. 9, T. 31 S., R. 25 E.

SCALE 1:198

CONTOUR INTERVAL 0.005 PERCENT U.



13 — U. = 0.013%

IN THE FLORIDA PHOSPHATE FIELD SECTIONS ARE DIVIDED INTO 2.5 ACRE BLOCKS WHICH ARE REFERRED TO A COORDINATES SYSTEM LETTERED A—P, FROM WEST TO EAST AND NUMBERED 1—16, FROM SOUTH TO NORTH.

ISOGRADE MAP SHOWING DISTRIBUTION OF URANIUM  
IN LARGE PEBBLE FRACTION OF MATRIX BELOW LEACHED ZONE