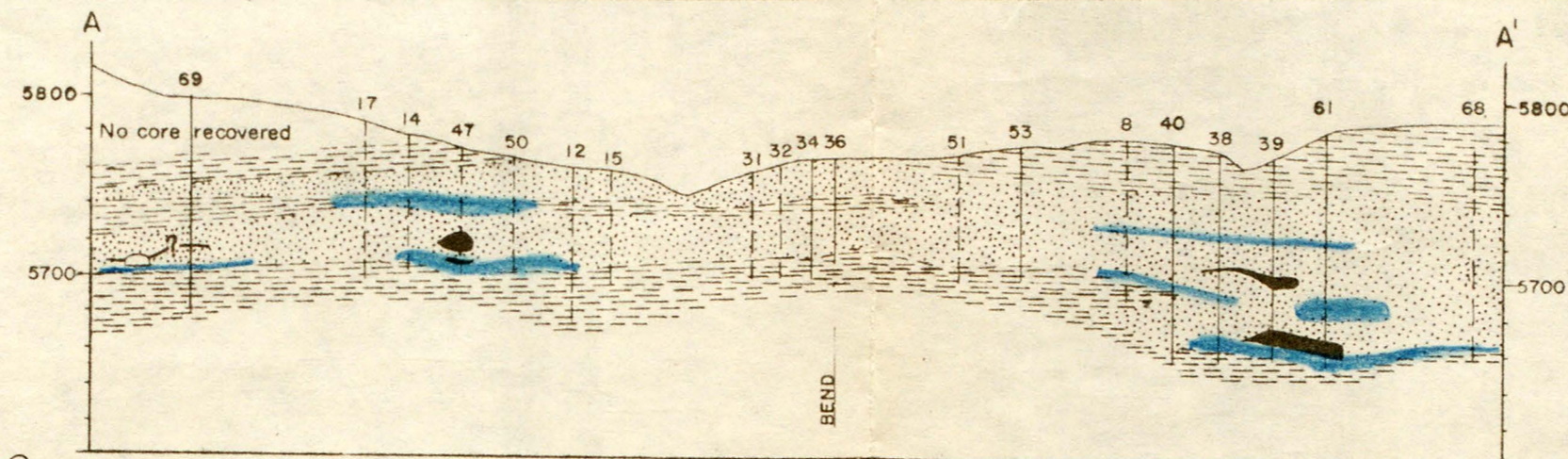
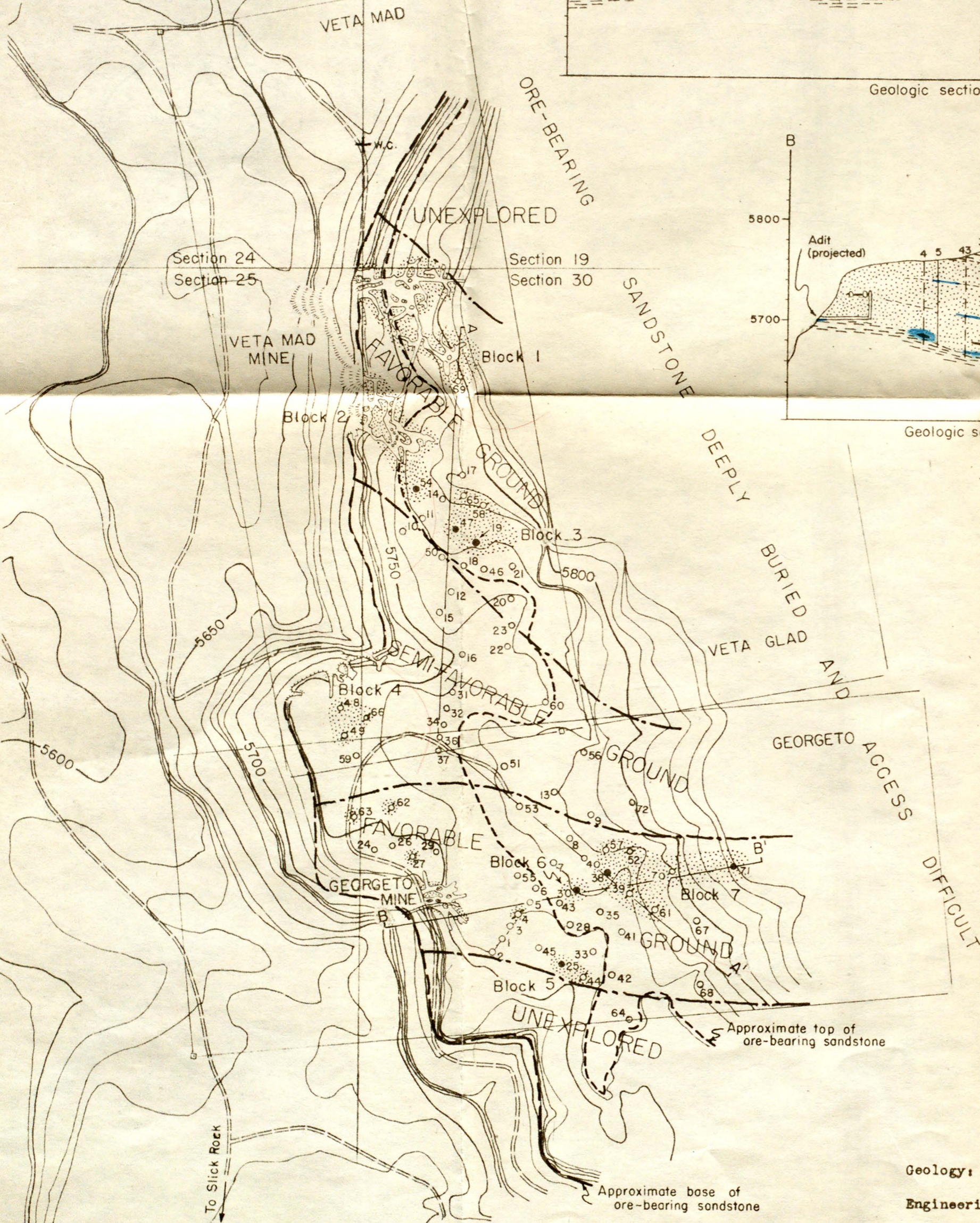
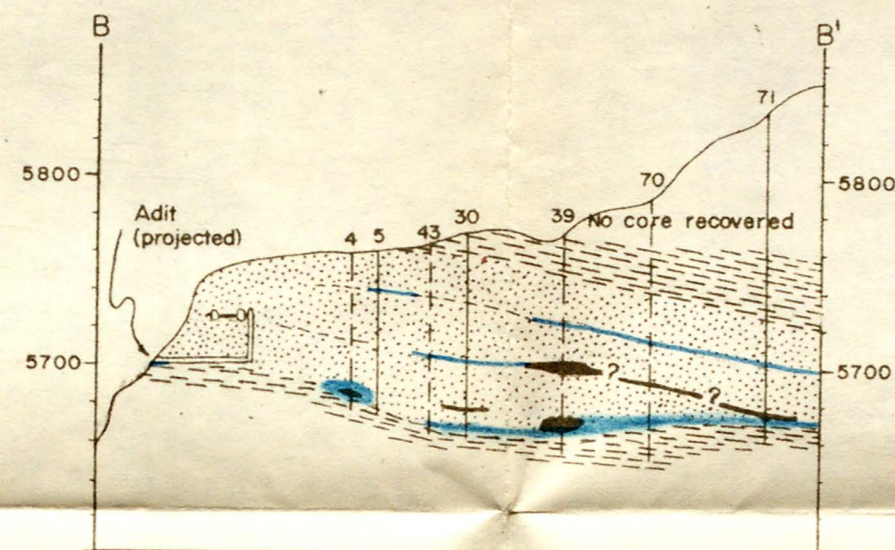


T. 44 N.
N.M.P.M.
R. 19 W. R. 18 W.



Geologic section A-A'



Geologic section B-B'

EXPLANATION

Map

- - - Approximate top of ore-bearing sandstone
- - - Approximate base of ore-bearing sandstone
- - - Boundary of favorable and semi-favorable ground
- Ground underlain by carnotite-bearing rock (includes reserve blocks where indicated by block number)
- Mine working, underground (approximate outline)
- Mine dump (approximate outline)
- +w.c. Land section witness corner found in field
- Claim stake or monument found in field
- Diamond-drill holes, Geological Survey (Numbers on caps of standpipes left in holes all have the prefix GT. Drill holes are located by plane-table methods.)
- ₁₂ Barren
- ₄ Weakly mineralized (less than 0.10% U₃O₈ and 1.0% V₂O₅ or less than 1 foot thick regardless of grade)
- ₂₅ Ore-bearing (0.10% or more U₃O₈ or 1.0% or more V₂O₅ and 1 foot or more thick)

Geologic sections

- Red mudstone and barren sandstone
- Gray mudstone
- Ore-bearing sandstone
- Carnotite-bearing rock; inferred connections are shown by (?)
- Mine workings, underground (approximate outline)
- Diamond-drill hole; dashed where projected into plane of section

100 0 300 FEET

Vertical scale

200 0 600 FEET

Horizontal scale
Contour interval 10 feet
Datum is mean sea level

UNITED STATES DEPARTMENT OF THE INTERIOR

GEOLOGICAL SURVEY

TRACE ELEMENTS INVESTIGATIONS REPORT 116

CARNOTITE RESOURCES OF
THE GEORGETOWN GROUP
OF CLAIMS, SAN MIGUEL
COUNTY, COLORADO.
June 1950

Figure 2.--Map and
geologic sections of
the Georgetown group
of claims, San Miguel
County, Colorado

Geology: R. D. Trace and others

Engineering: E. V. Reinhardt and others