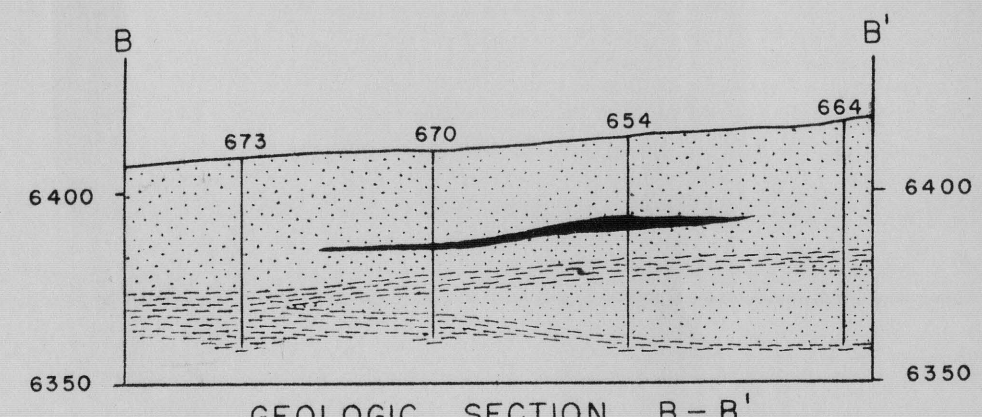
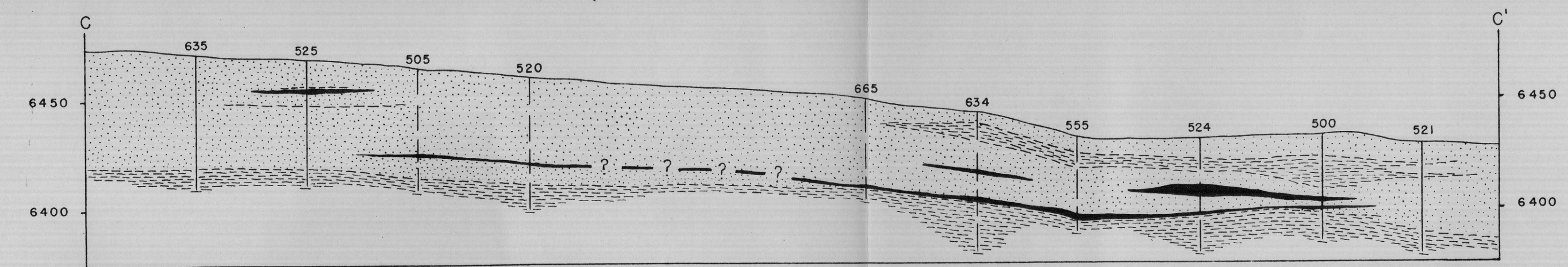


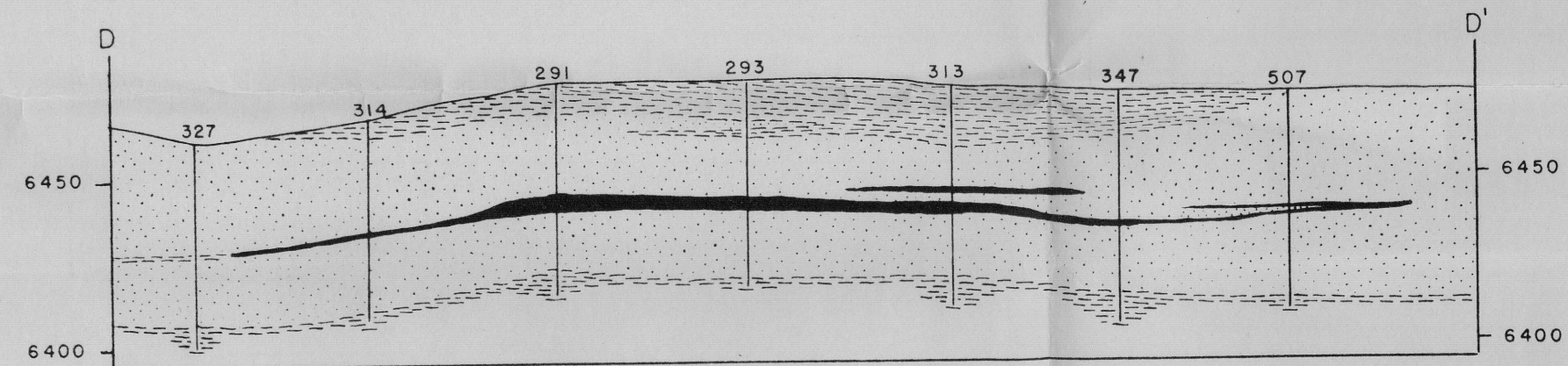
GEOLOGIC SECTION A-A'



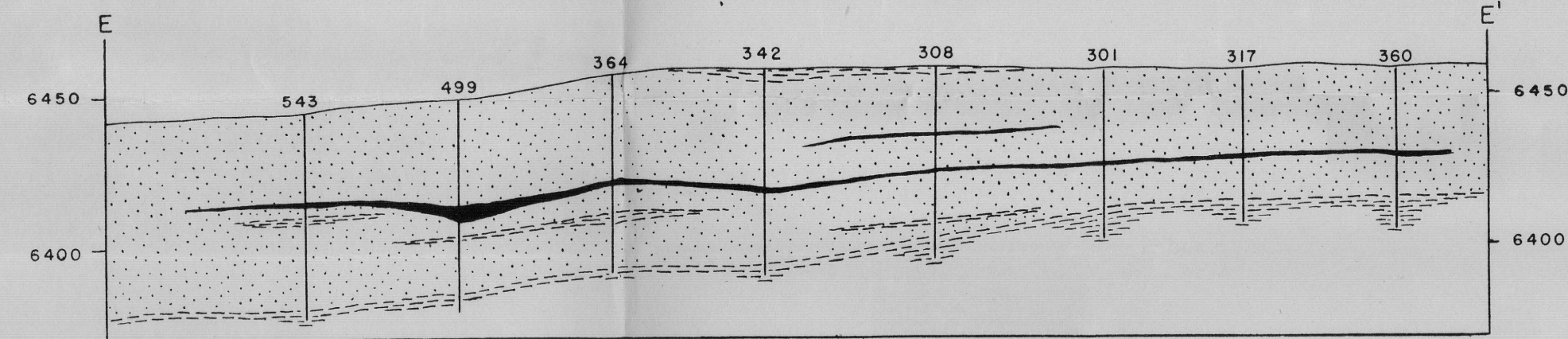
GEOLOGIC SECTION B-B'



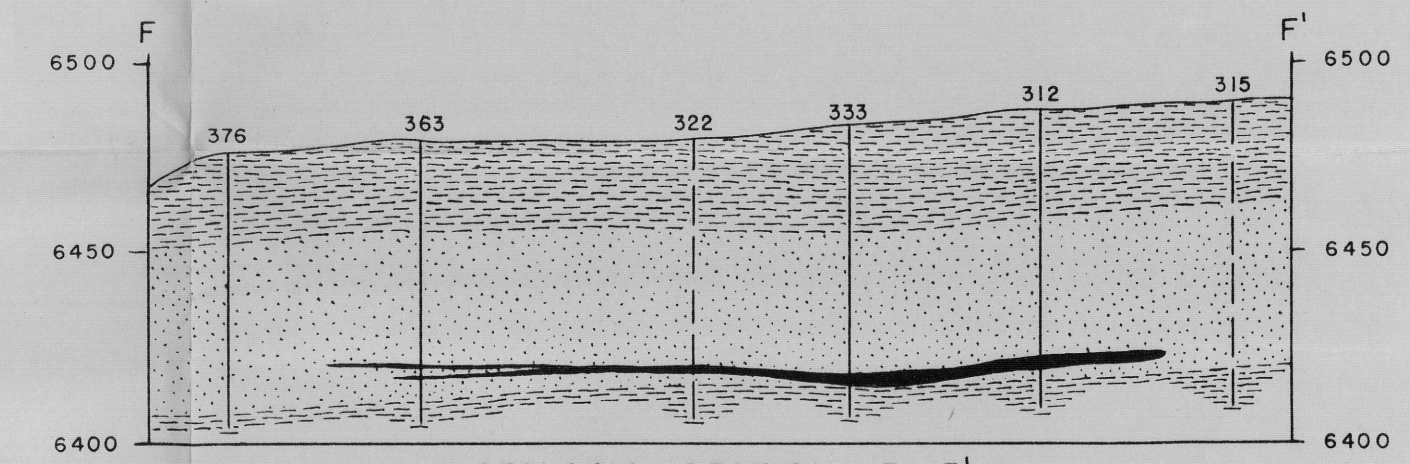
GEOLOGIC SECTION C-C'



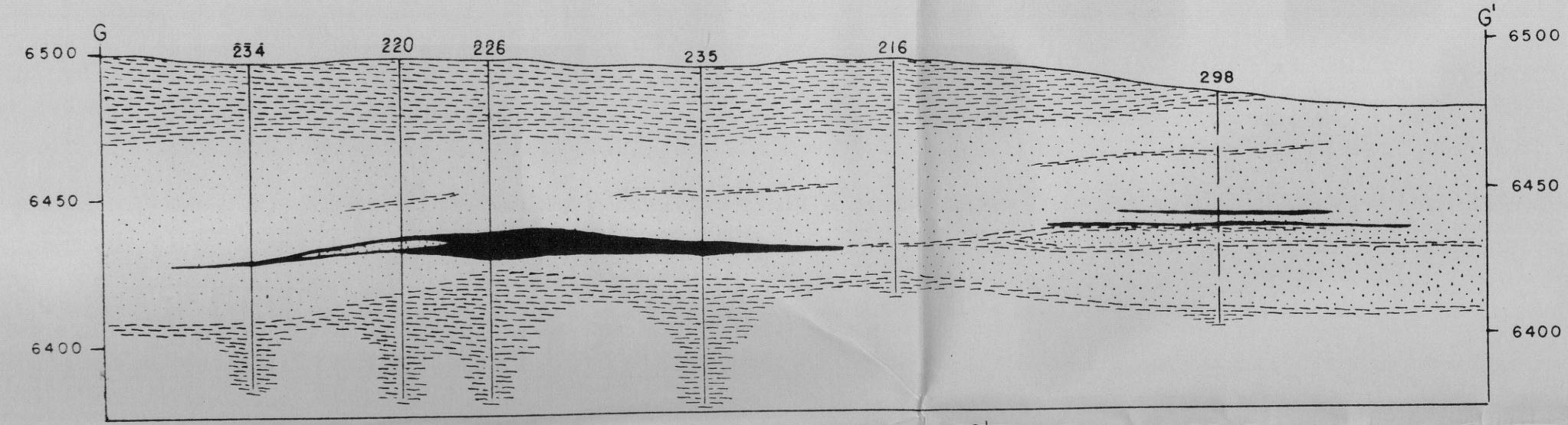
GEOLOGIC SECTION D-D'



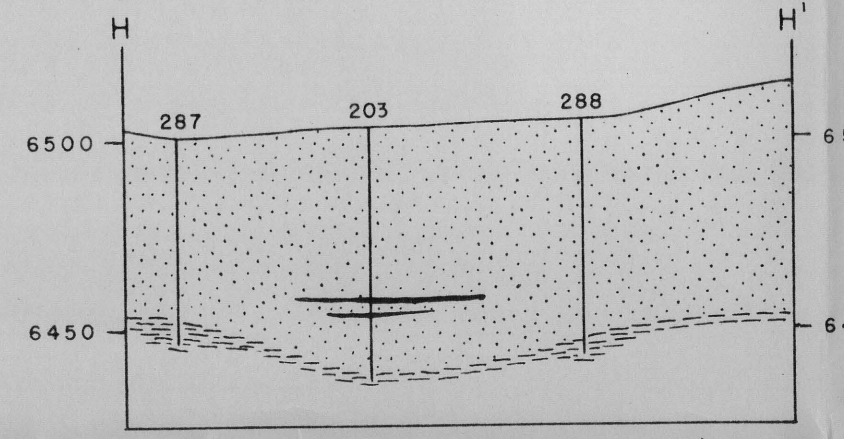
GEOLOGIC SECTION E-E'



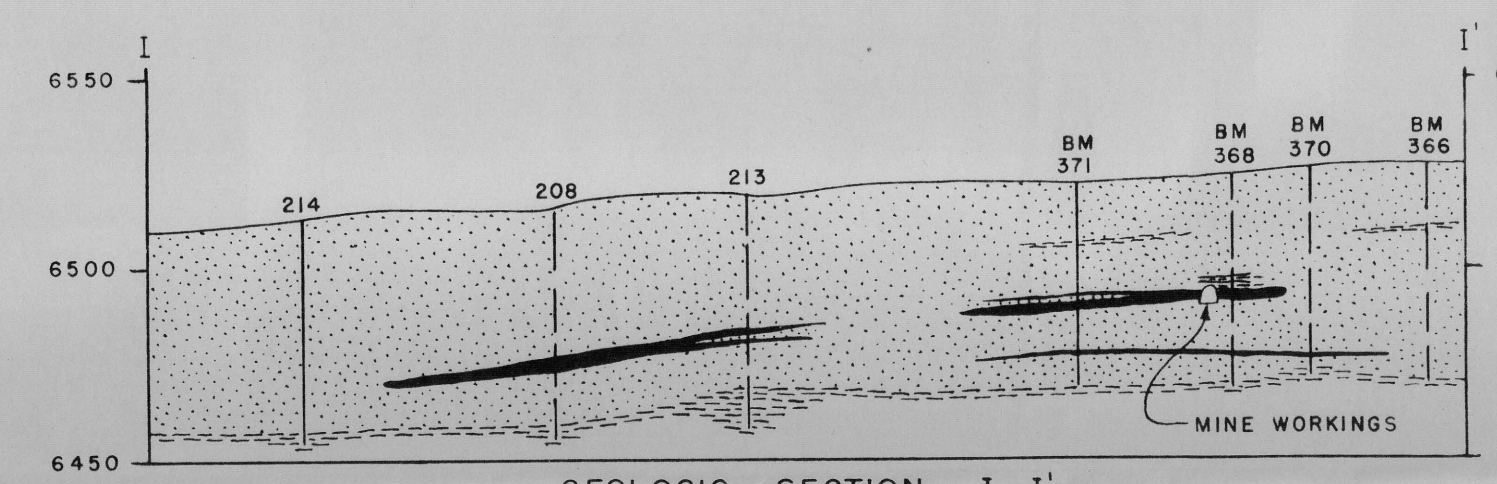
GEOLOGIC SECTION F-F'



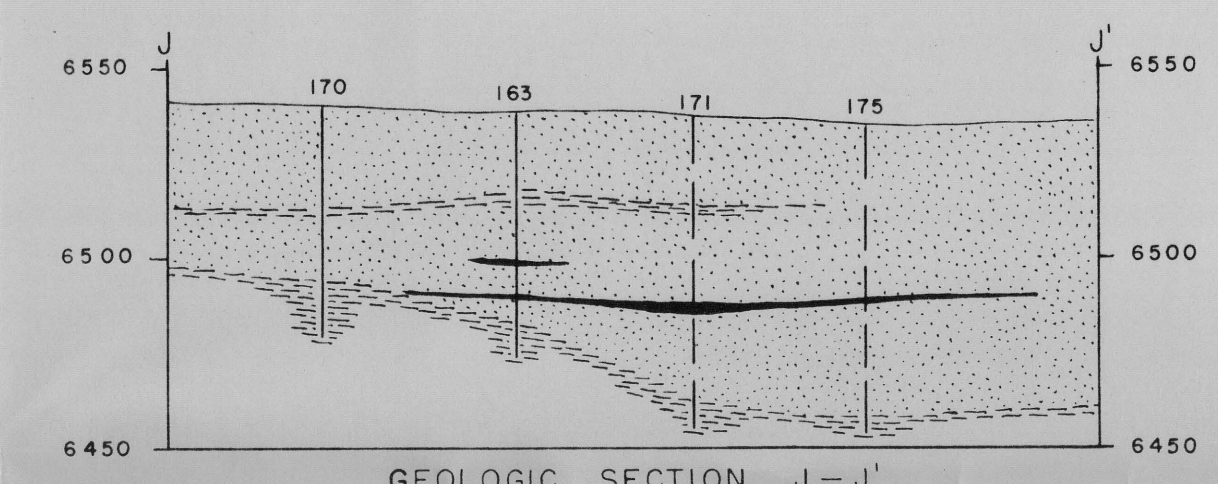
GEOLOGIC SECTION G-G'



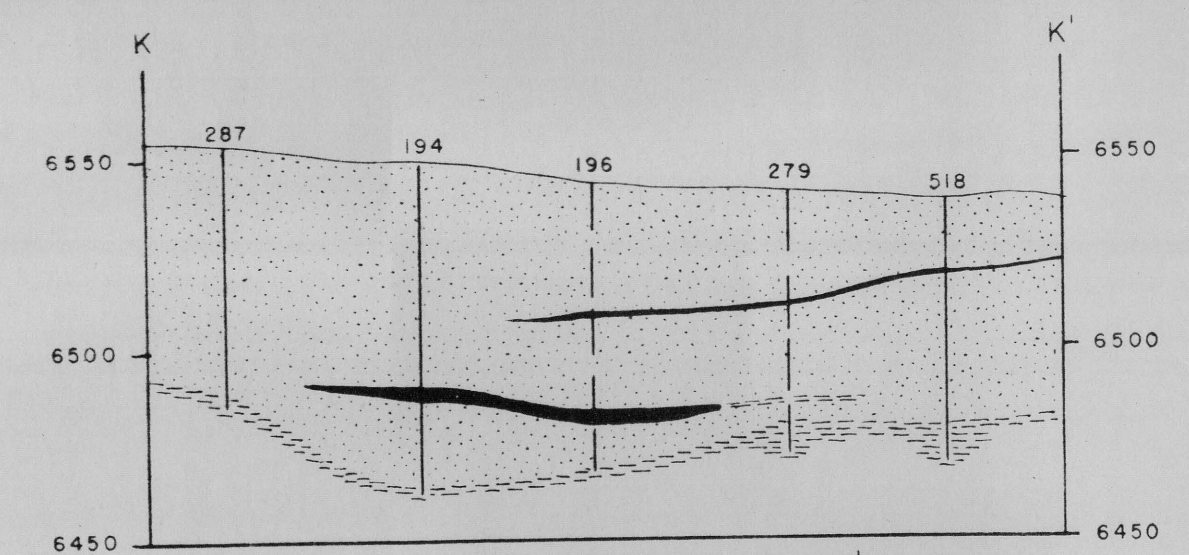
GEOLOGIC SECTION H-H'



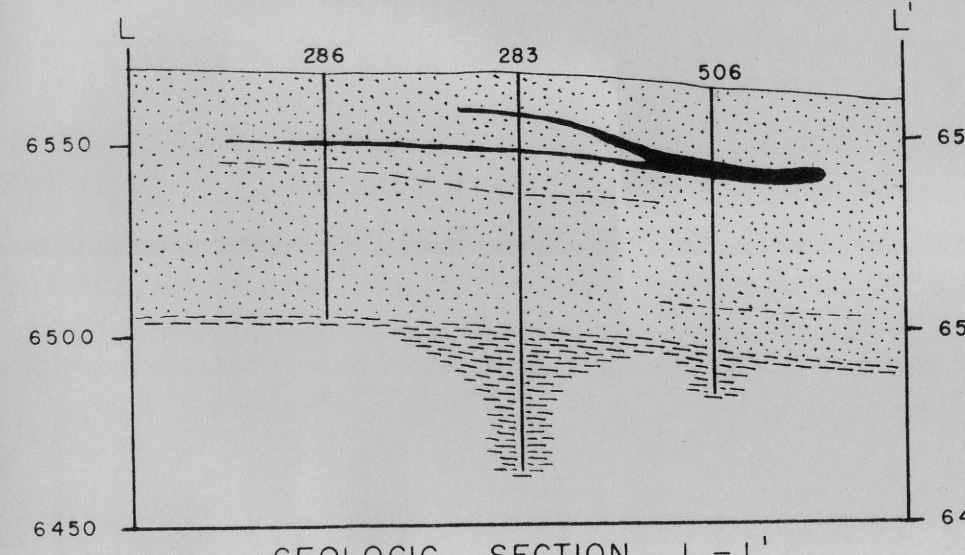
GEOLOGIC SECTION I-I'



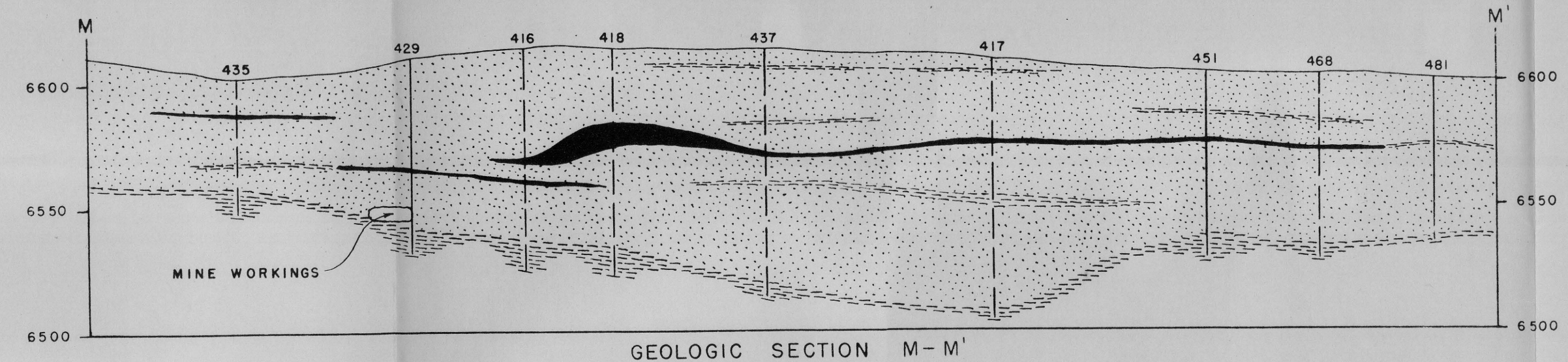
GEOLOGIC SECTION J-J'



GEOLOGIC SECTION K-K'



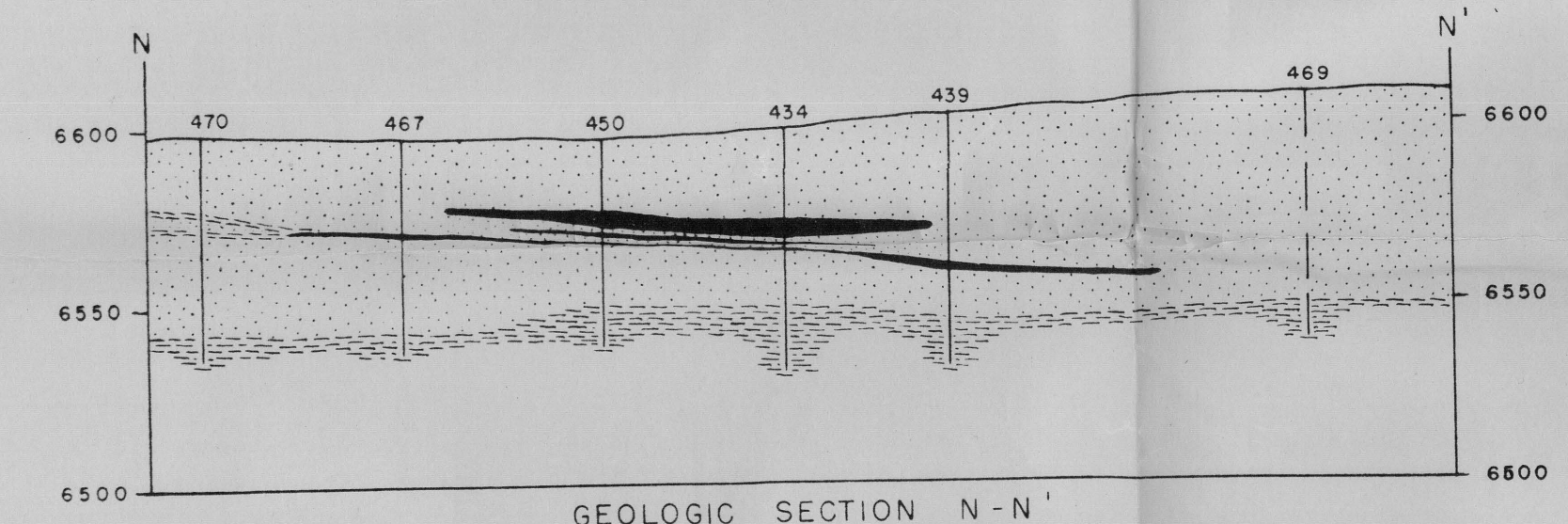
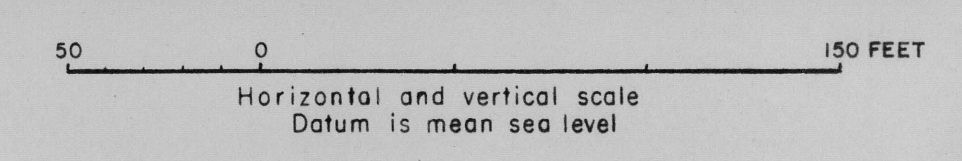
GEOLOGIC SECTION L-L'



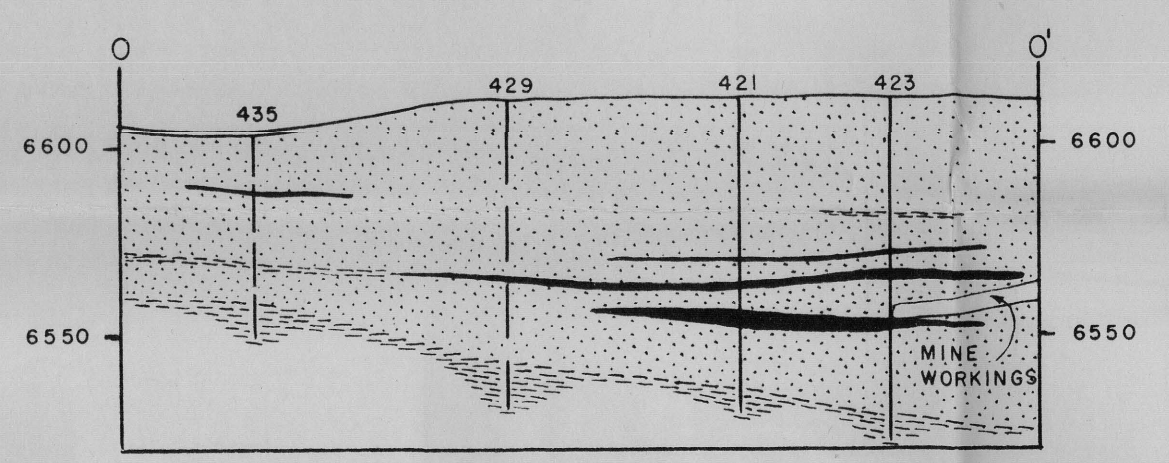
GEOLOGIC SECTION M-M'

EXPLANATION

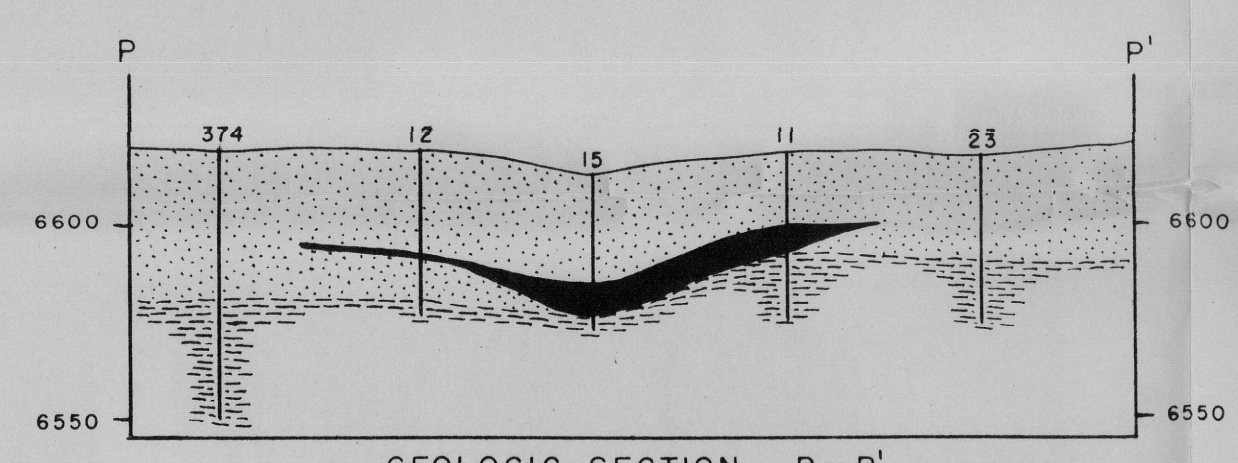
- Mudstone and fine-grained sandstone
- Ore-bearing sandstone
- Carnotite-bearing rock, inferred connections are shown by question mark
- Diamond-drill hole, U.S. Geological Survey; dashed where projected into section
- Diamond-drill hole, U.S. Bureau of Mines; dashed where projected into section
- Drill holes by mining companies are not shown



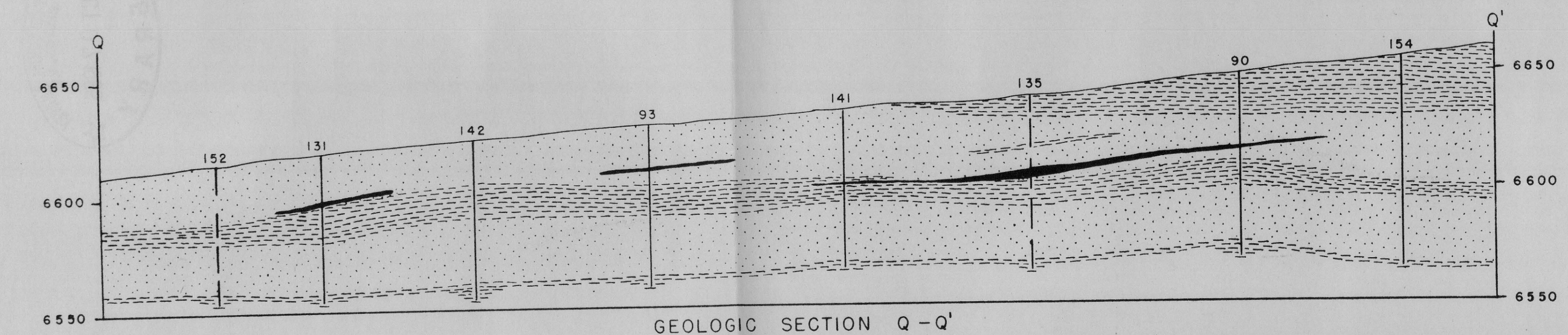
GEOLOGIC SECTION N-N'



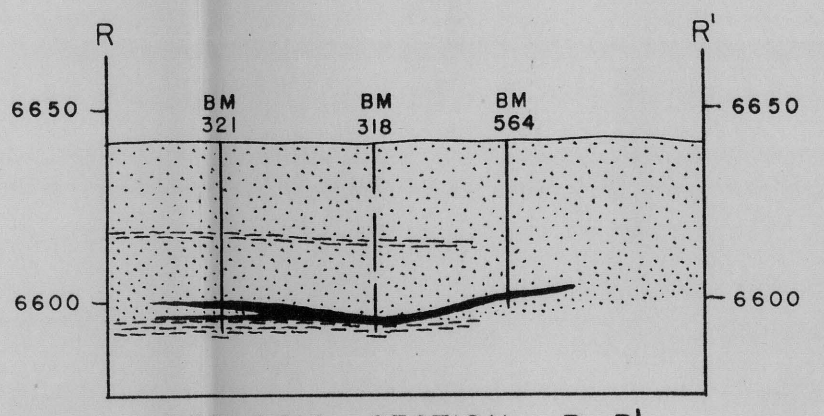
GEOLOGIC SECTION O-O'



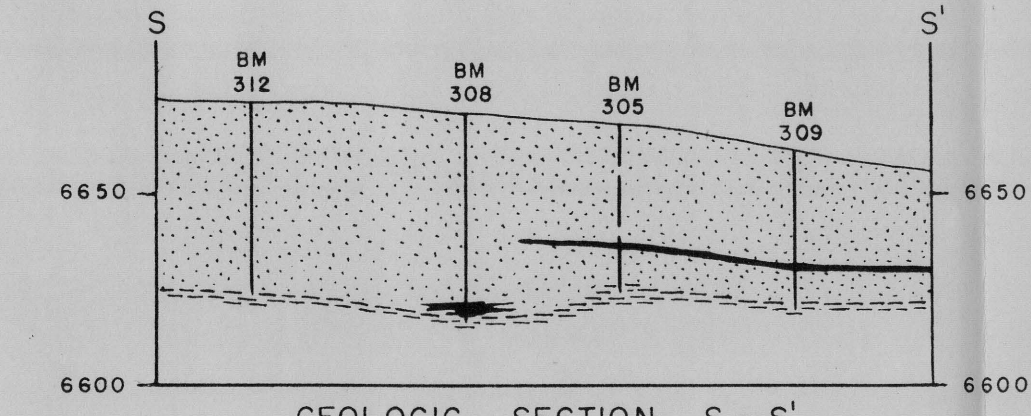
GEOLOGIC SECTION P-P'



GEOLOGIC SECTION Q-Q'



GEOLOGIC SECTION R-R'



GEOLOGIC SECTION S-S'

UNITED STATES DEPARTMENT OF THE INTERIOR
GEOLOGICAL SURVEY
TRACE ELEMENTS INVESTIGATIONS REPORT 146

CARNOTITE RESOURCES OF THE CALAMITY GROUP AREA, MESA COUNTY, COLORADO
April 1951

Figure 4.--Geologic sections in the Calamity group area, Mesa County, Colorado