

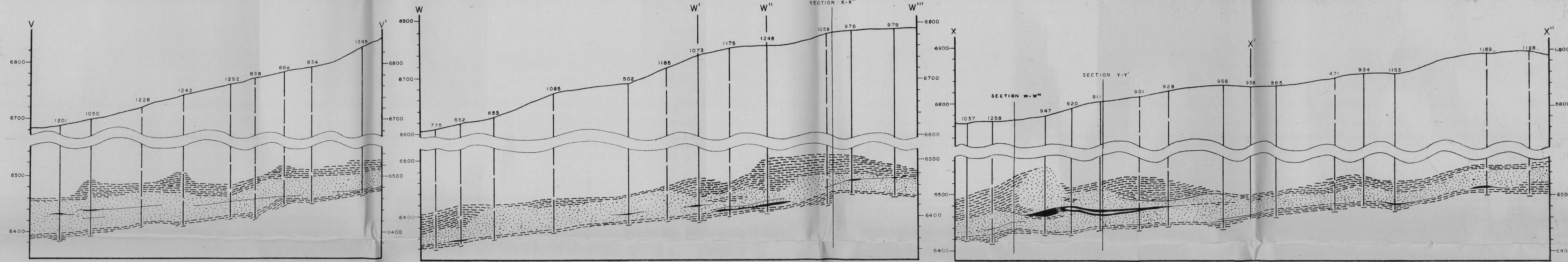
Confidential information affecting the national defense of the United States within the meaning of the espionage laws, Title 18, U.S.C., Secs. 793 and 794, the transmission or revelation of which in any manner to an unauthorized person is prohibited by law.

CONFIDENTIAL
SECURITY INFORMATION

CONFIDENTIAL SECURITY INFORMATION

(300)
76-11
040 163

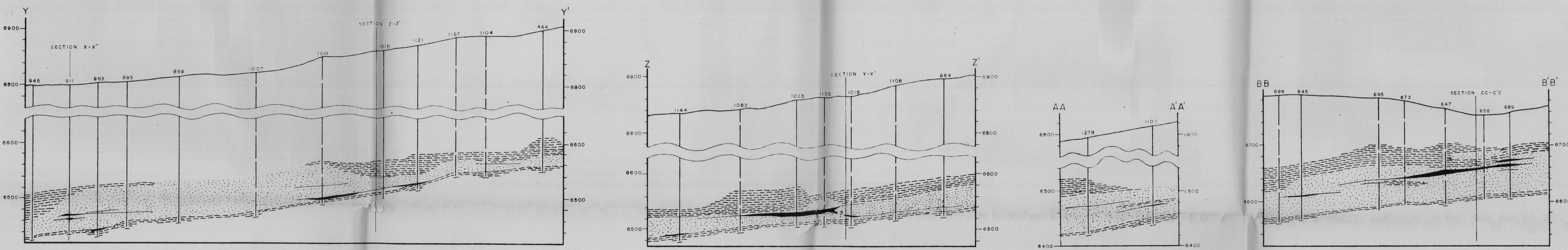
LIBRARY
OCT 17 1952
U.S. GEOLOGICAL SURVEY
WASHINGTON, D.C.



GEOLOGIC SECTION V-V'

GEOLOGIC SECTION W-W''

GEOLOGIC SECTION X-X''

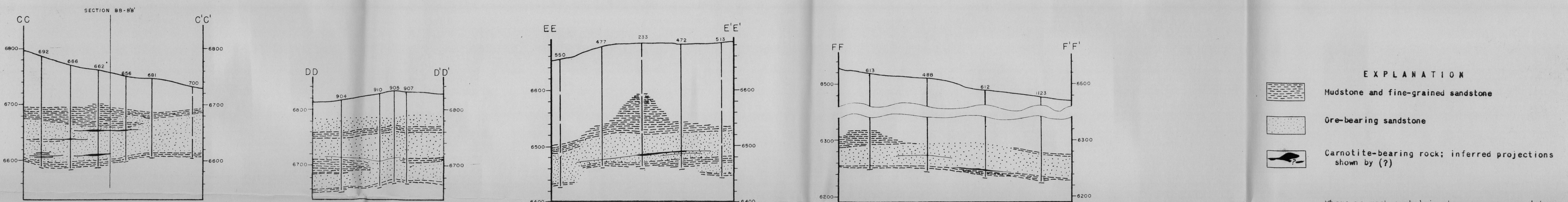


GEOLOGIC SECTION Y-Y'

GEOLOGIC SECTION Z-Z'

GEOLOGIC SECTION AA-A'A'

GEOLOGIC SECTION BB-B'B'



GEOLOGIC SECTION CC-C'C'

GEOLOGIC SECTION DD-D'D'

GEOLOGIC SECTION EE-E'E'

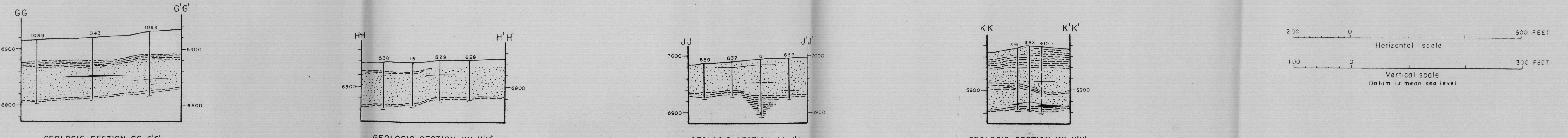
GEOLOGIC SECTION FF-F'F'

EXPLANATION

- Mudstone and fine-grained sandstone
- Ore-bearing sandstone
- Carnotite-bearing rock; inferred projections shown by (?)

Where no rock symbol is shown no core was taken

Diamond-drill hole, Geological Survey. Dashed where projected into section. (Holes drilled by mining companies not shown)

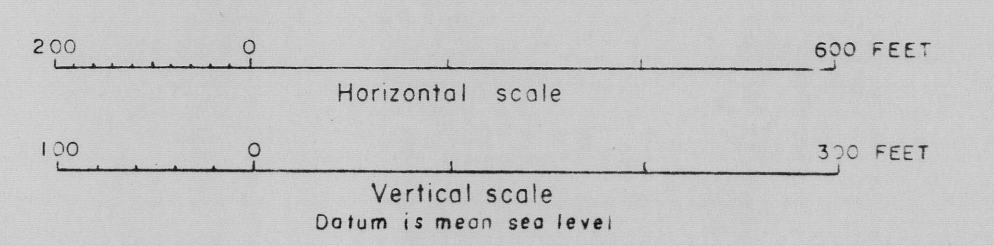


GEOLOGIC SECTION GG-G'G'

GEOLOGIC SECTION HH-H'H'

GEOLOGIC SECTION JJ-J'J'

GEOLOGIC SECTION KK-K'K'



CONFIDENTIAL
SECURITY INFORMATION

Figure 7.-- GEOLOGIC SECTIONS OF OUTLAW MESA, MESA COUNTY, COLORADO

CONFIDENTIAL SECURITY INFORMATION