

\* (200)  
Tularem  
no. 211

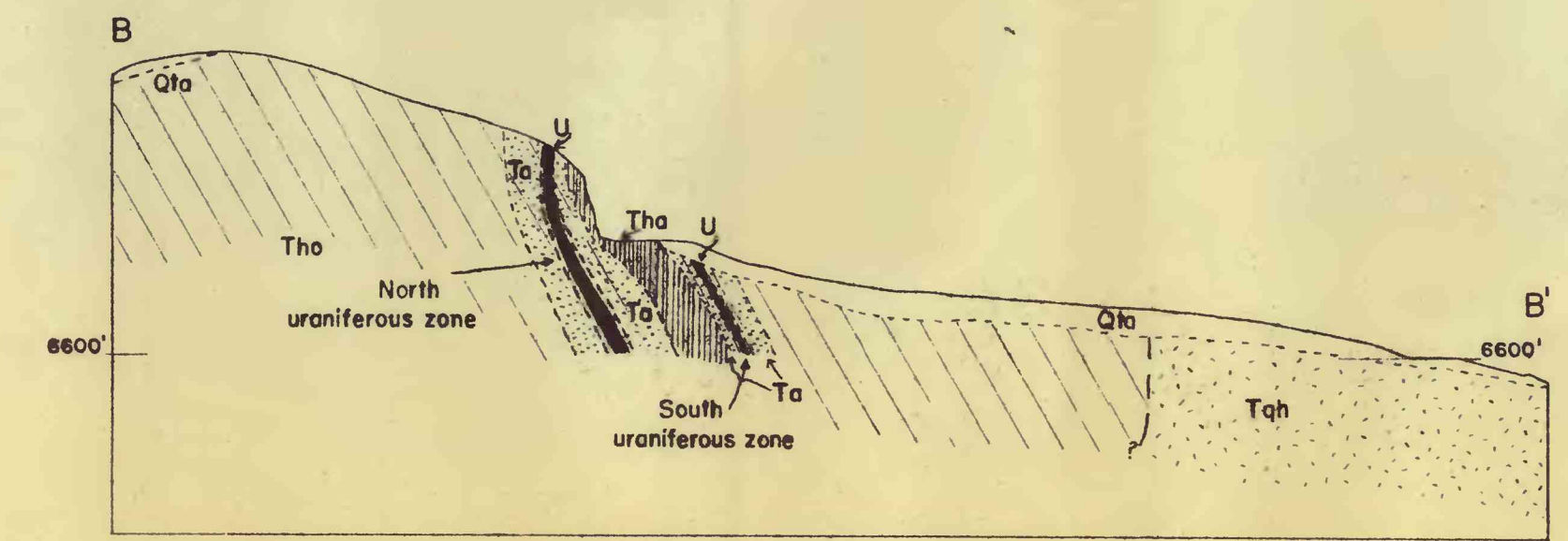
PLEASE REPLACE IN POCKET  
IN BACK OF BOUND VOLUME

U.S. GEOLOGICAL SURVEY  
DENVER  
JUL 13 1983  
LIBRARY  
GEOLOGICAL DIVISION

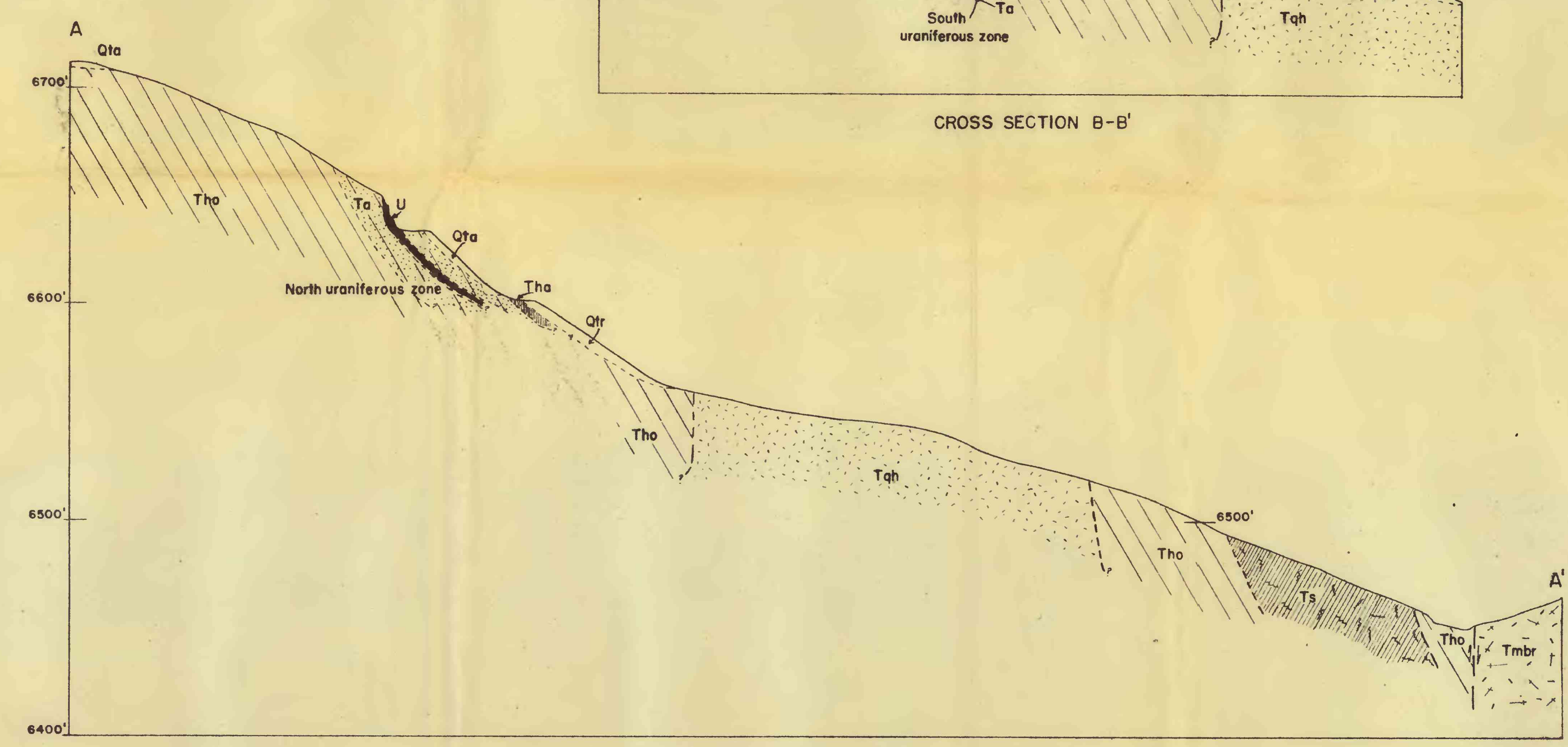
EXPLANATION

Quaternary	Alluvium	Uranium minerals (Uranophane, autunite, metatorbernite, schoeningerite) in white to buff or orange argillized rock
	Talus (Qtr, red float from hematite-alunite rock)	
Later Tertiary	Mount Belknap rhyolite, red facies (Tuffaceous and platy)	Hematite-alunite-quartz-kaolinite rock
	Exposed, essentially exposed, in part covered by colluvium	
Earlier Tertiary	Quartz monzonite and partially assimilated blocks of hornfels	Exposed, essentially exposed, in part covered by colluvium
	Quartz monzonite (Intrusive dark gray and equigranular)	
	Exposed	Silicified hematite-alunite rock
	Essentially exposed, in part covered by colluvium	
Hornfels (Contact-metamorphosed Bullion Canyon latite and associated volcanic rocks; predominately dark gray to green aphanitic rock with feldspar porphyroblasts, but also includes granular brown to gray or red unfoliated recrystallized rock)		Altered hornfels (Bleached, kaolinized, or limonitized)
Breccia		

- Limit of exposure
- Gradational contact
- Inferred contact
- Concealed contact
- Strike and dip of banding
- Strike and dip of fracture
- Inferred fault (Dotted where concealed)
- Bulldozer road, cut, and dump



CROSS SECTION B-B'



CROSS SECTION A-A'

0 50 100 200 300'  
Contour interval 10 feet  
Altitude assumed from U. S. Geological Survey Monroe quadrangle

Geology by D. G. Wyant  
August 1950

FIGURE 2.—GEOLOGIC MAP AND CROSS SECTIONS, EAST SLOPE NO. 2 URANIUM PROSPECT, PIUTE COUNTY, UTAH