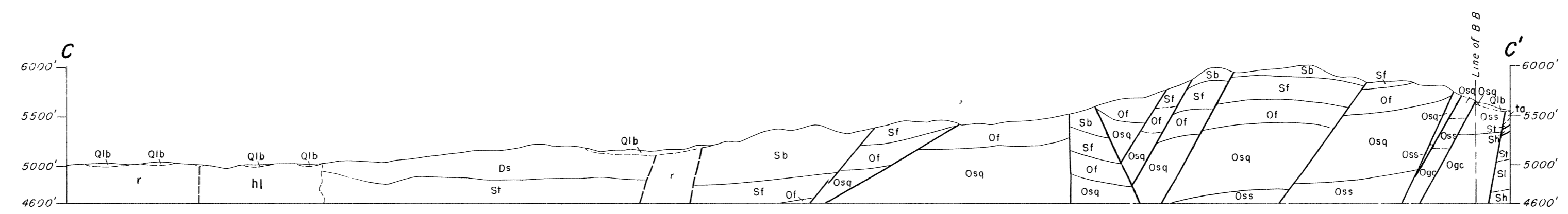
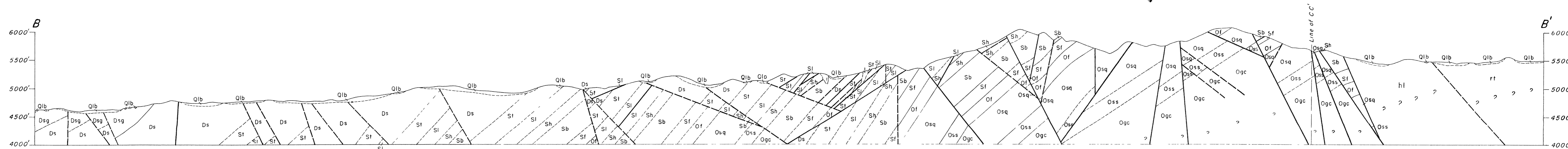
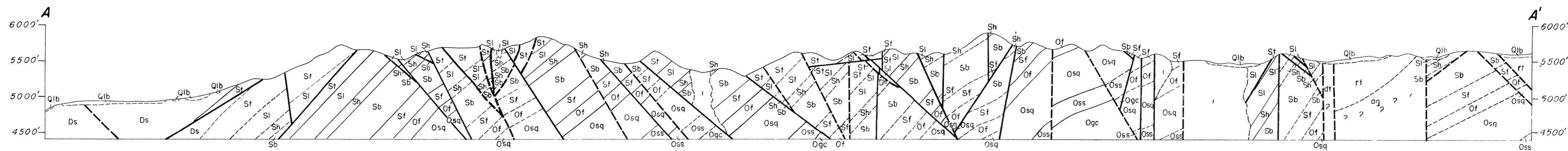


7672
7673



EXPLANATION

<p>VOLCANIC ROCKS</p> <p>i Intrusive breccia</p> <p>r Rhyolite</p> <p>rt Rhyolitic tuff <i>Includes vitric, crystal and lithic fractions</i></p> <p>ag Agglomerate</p> <p>hl Hypersthene latite</p>	<p>TERTIARY (?)</p>	<p>SEDIMENTARY ROCKS</p> <p>Qlb Lake Bonneville gravels and alluvium, undivided</p> <p>Dsg Simonsen dolomite and Guilmette formation, undivided</p> <p>Ds Sevy dolomite</p> <p>Sf Thursday dolomite</p> <p>Sl Lost Sheep dolomite</p> <p>Sh Harrisite dolomite</p>	<p>DEVONIAN QUATERNARY</p>	<p>Sb Bell Hill dolomite</p> <p>Sf Floride dolomite</p> <p>Of Fish Haven dolomite</p> <p>Osq Oss Swan Peak formation <i>The quartzite member - Osq</i> <i>The shale member - Oss</i></p> <p>Ogc Garden City formation</p>	<p>ORDOVICIAN</p>
---	---------------------	---	----------------------------	---	-------------------

<p>— — — — — Contact <i>Dashed where approximately located</i></p>	<p>— — — — — Fault <i>Dashed where approximately located</i></p>
--	--

JUL 1 1983

PLEASE REPLACE IN POCKET
IN BACK OF BOUND VOLUME

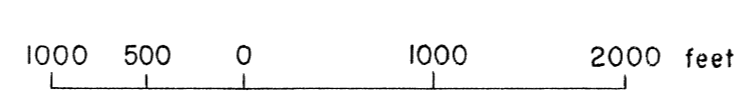


PLATE IV - GEOLOGIC STRUCTURE SECTIONS OF THE THOMAS RANGE FLUORITE DISTRICT, JUAB COUNTY, UTAH