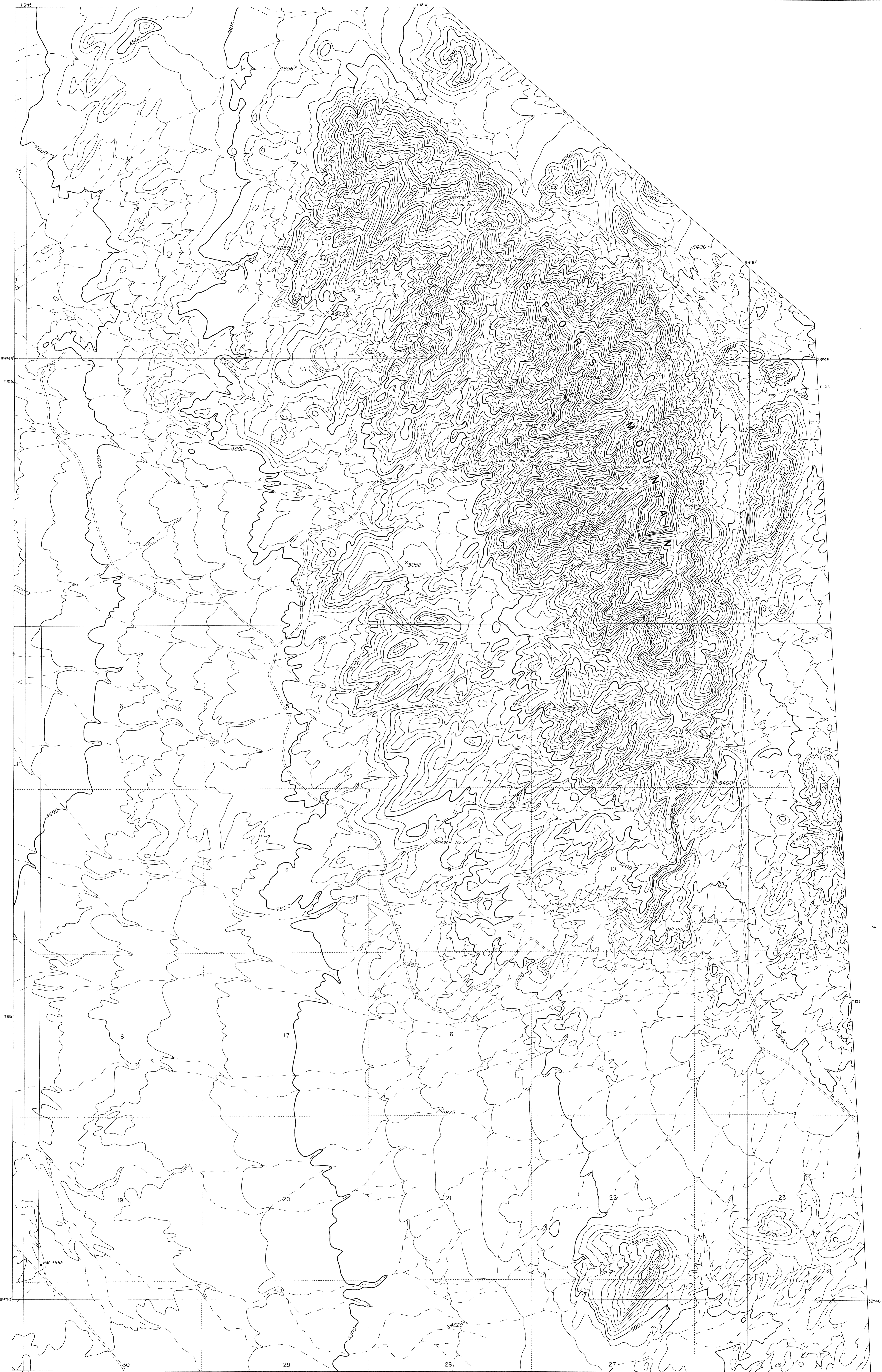


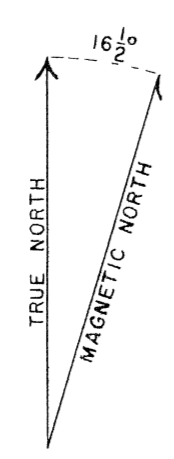
(100)
T 47
76.253



Topography from United States Geological Survey's Drum I and II preliminary sheets Surveyed in 1952

EXPLANATION

- + or T Located corners or section corners
- ∟ Portal of adit
- × Prospect
- ⋈ Mine



JUL 1 1983

PLEASE REPLACE IN POCKET
IN BACK OF BOUND VOLUME

FIGURE 2. TOPOGRAPHIC MAP OF THE THOMAS RANGE FLUORITE DISTRICT, JUAB COUNTY, UTAH

1000 500 0 1000 2000 feet
Contour interval 40 feet
Datum is mean sea level