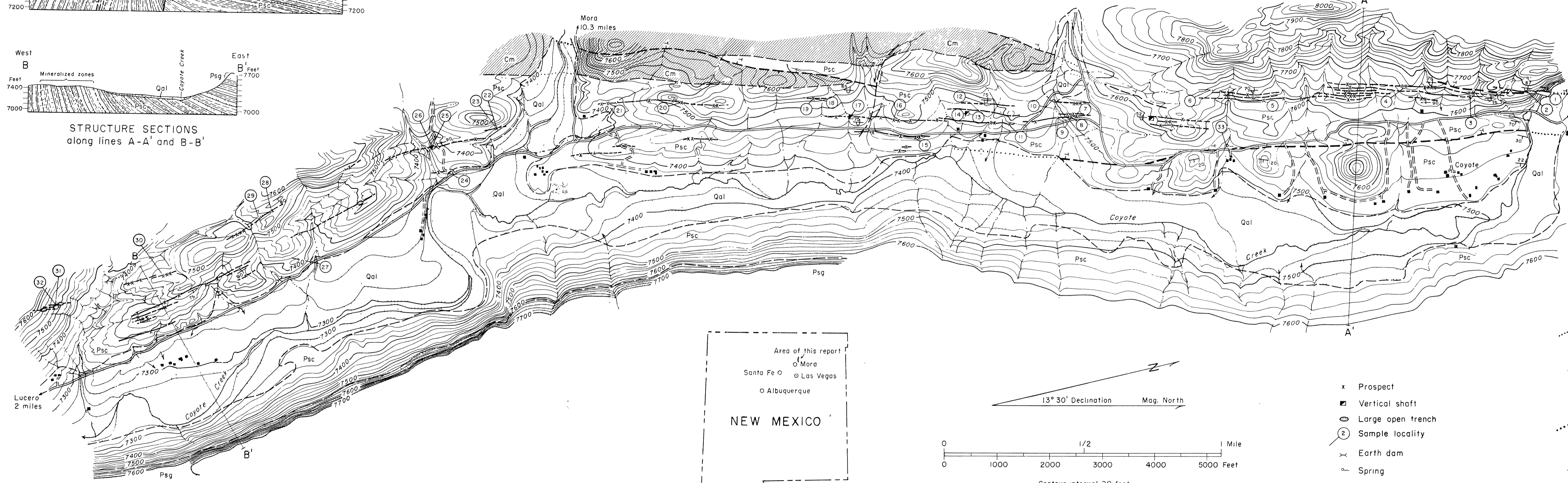


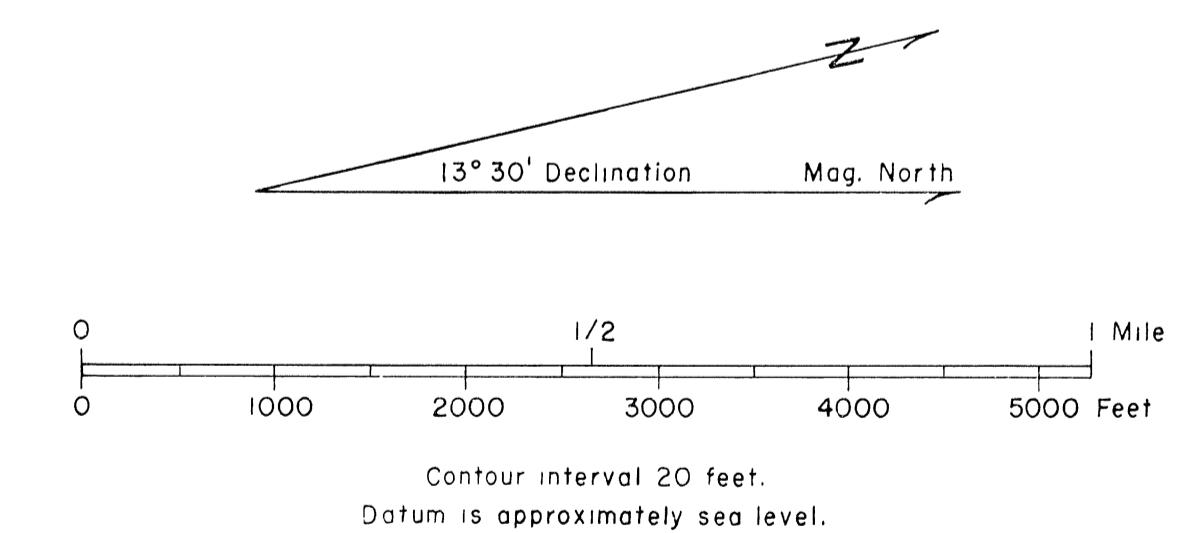
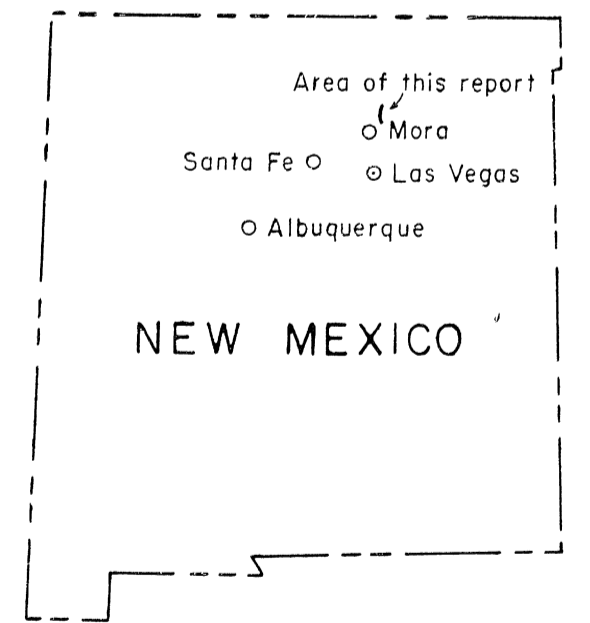
STRUCTURE SECTIONS
along lines A-A' and B-B'



EXPLANATION

Sedimentary Rocks	
Qal	Quaternary
Alluvium	
Psg	Permian
San Andres formation Glorieta sandstone member	
Psc	Pennsylvanian
Sangre de Cristo formation	
Cm	Magdalena group

- - - - - Approximate contact of geologic formation, dotted where concealed.
- — — — — Copper and uranium-bearing zone mapped where mineralized at surface. Solid line indicates traceable mineralization; dashed line, probable mineralization
- - - - - Thrust fault. Dashed where approximately located, dotted where concealed. T indicates overthrust block.
- ↔ ↔ ↔ Transverse fault. Arrows indicate direction of relative movement.
- ↘ ↘ ↘ Dip and strike of beds.
- ↘ ↘ ↘ Dip and strike of overturned beds.

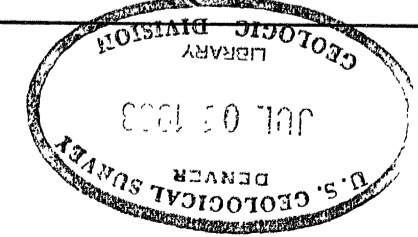


- x Prospect
- Vertical shaft
- ⊙ Large open trench
- ② Sample locality
- ⌘ Earth dam
- Spring
- Graded dirt road
- - - - - Dirt road

PLEASE REPEAT IN BOOKLET
IN BACK OF BOOKLET

FIGURE 4.--GEOLOGIC MAP SHOWING URANIUM-BEARING COPPER DEPOSITS IN THE COYOTE DISTRICT, MORA COUNTY, NEW MEXICO.
1953

Topography and geology by H. D. Zeller and E. H. Baltz, Jr.



200
TL72
no. 338