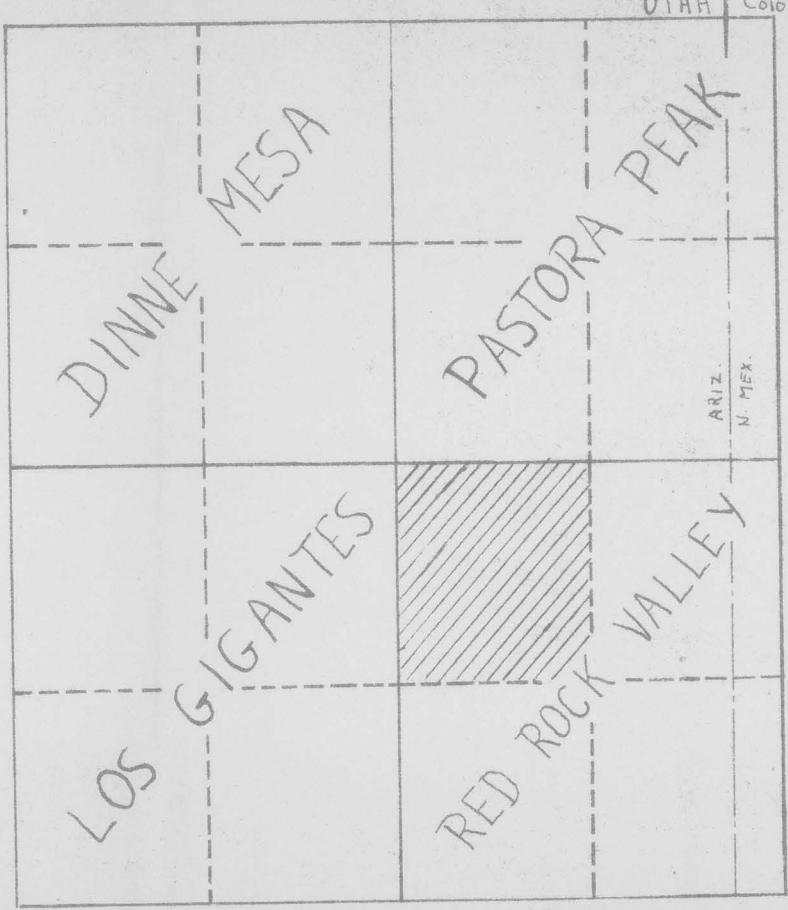


OPSON 3 1/8 INCH PANELS



PLEASE REPLACE IN POCKET

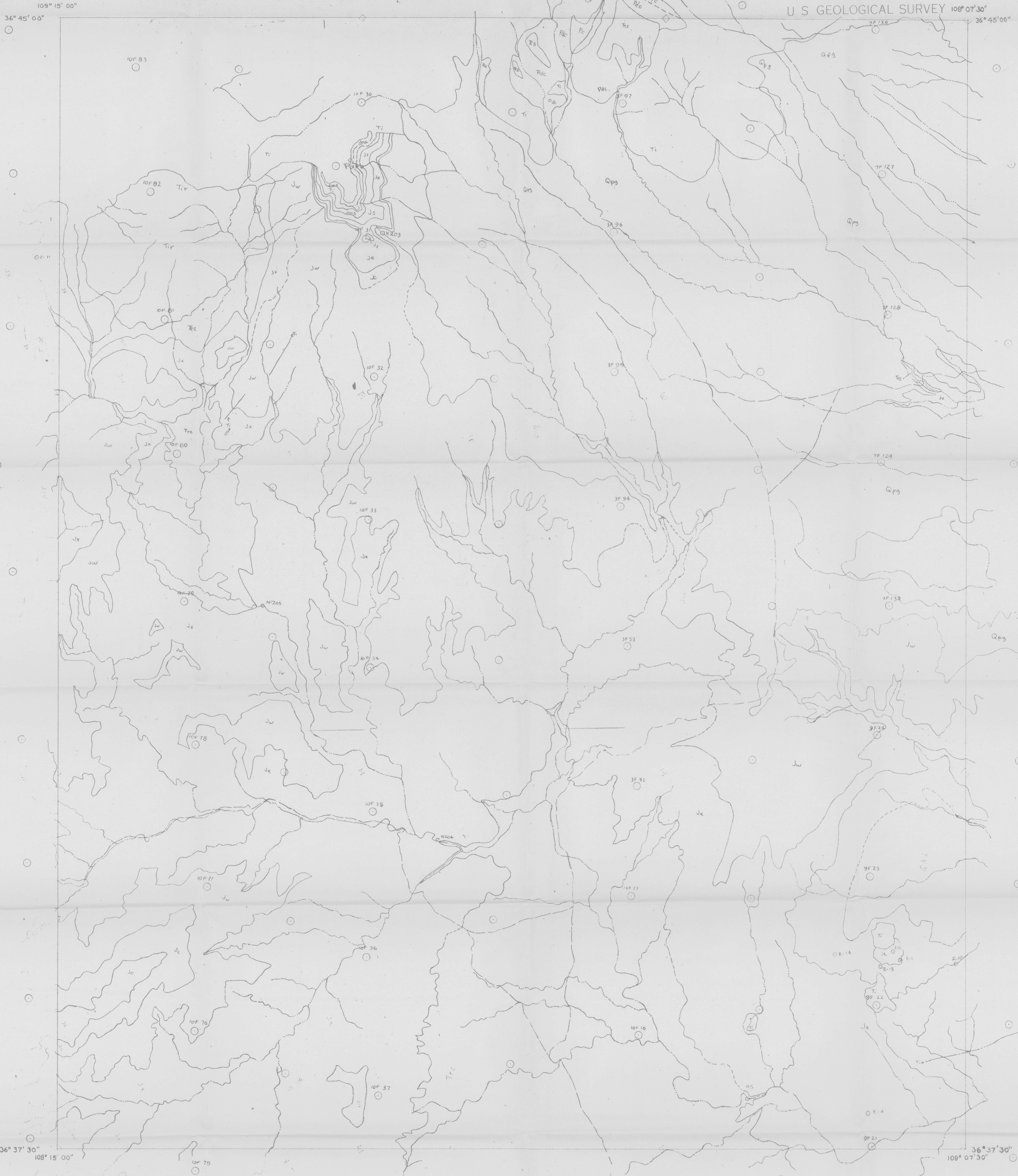


(200)
T.C.7a
No. 419

Trace Elements Memorandum Report 419

Redrock Valley NW

U S GEOLOGICAL SURVEY 108° 07' 30"



- Qs dune sand
- Qal alluvium
- Qt terrace deposits
- Qg gravel
- Qgp pediment gravel
- Mancos formation
- Km upper Mancos sh
- Kt Todilto ss
- Kml lower Mancos sh
- Ed Dakota ss
- Morrison formation
- Jmb Brushy Basin member
- Jmw Westwater Canyon member
- Jmr Recapture member
- Jms Salt Wash member
- San Rafael Group
- Jb bluff ss
- Js Summerville fm and bluff ss
- Je Entrada fm and Todilto ls
- Jc Carmel fm
- Glen Canyon Group
- Jn Navajo ss
- Jk Kayenta fm
- Jw upper Wingate ss
- Jx lower Wingate ss
- Zc Chinle fm
- Ts Shinarump conglomerate
- Pd De Chelly ss
- Pc Cutler fm
- Igneous Rocks
- Ti intrusive igneous rocks
- Tir intrusive igneous rocks
- Breccia brecciated igneous and sedimentary rocks
- Contacts
- Roads
- Picture centers
- Wing points
- Streams
- Scale 1:20,000

PRELIMINARY DRAFT SUBJECT TO CORRECTION AND REVISION

OPSON 3 1/8 INCH PANELS