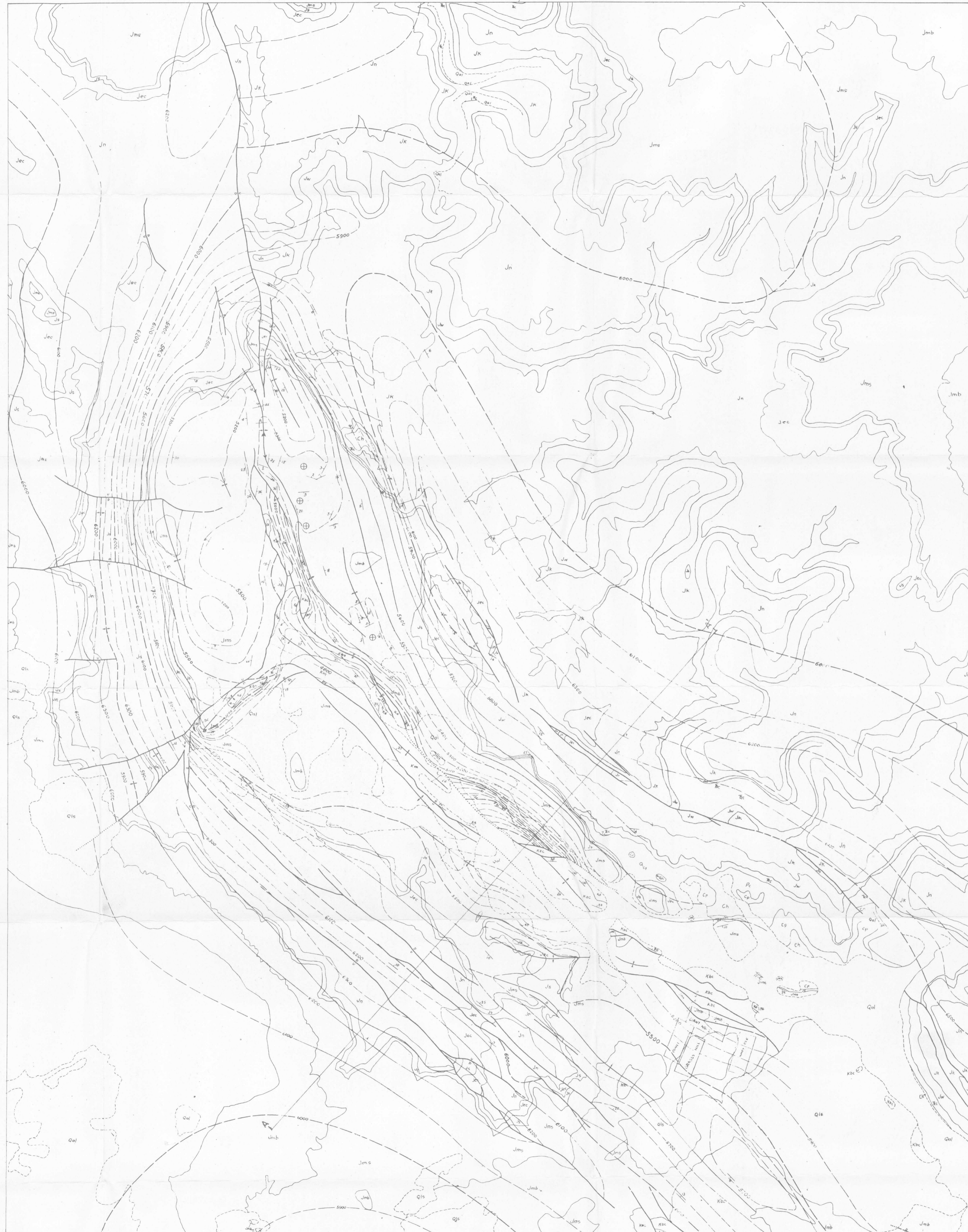


109° 00'

108° 52' 30"
38° 15'



109° 00'

108° 52' 30"
38° 07' 30"

Photographed from blue line compilation
sheet of U.S. Geological Survey topographic
Anderson Mesa quadrangle base map

**PRELIMINARY
GEOLOGIC MAP AND SECTION OF THE
ANDERSON MESA QUADRANGLE, COLORADO**

1 1/2 0 1 MILE
Because of distortion in reproduction and printing processes, scale of map and sections are
only approximate

This map is preliminary and has not
been edited or reviewed for conformity
with U.S. Geological Survey standards
and nomenclature

Geology by W. L. Stokes and D. A. Phoenix, 1945;
revised in part by F. W. Cater, Jr., 1951

