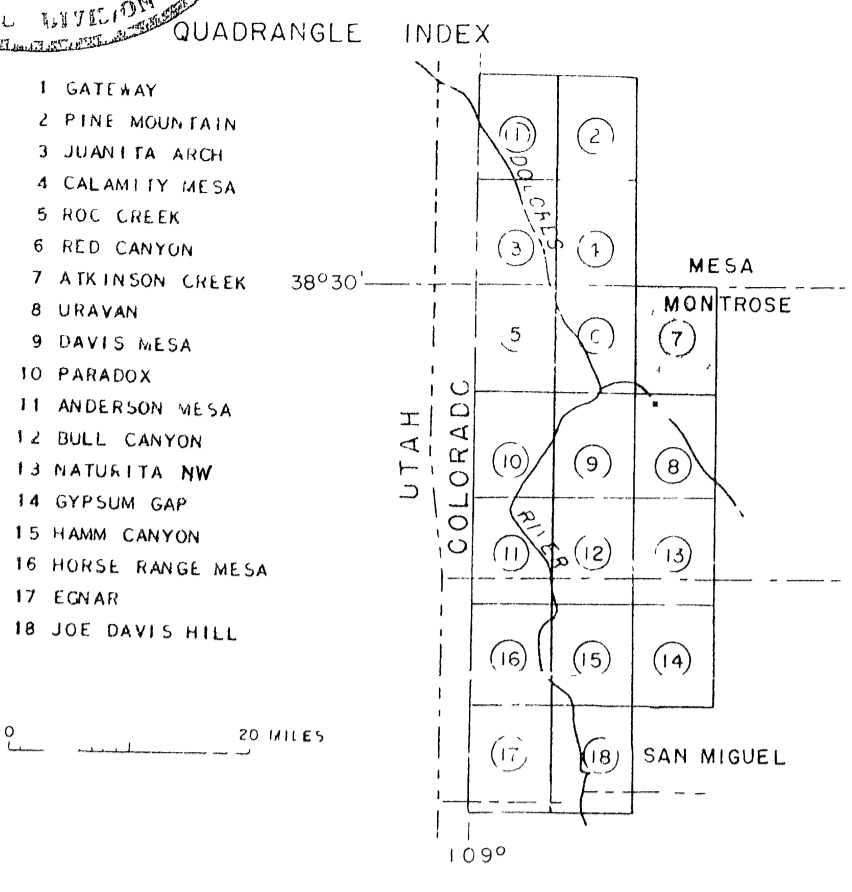
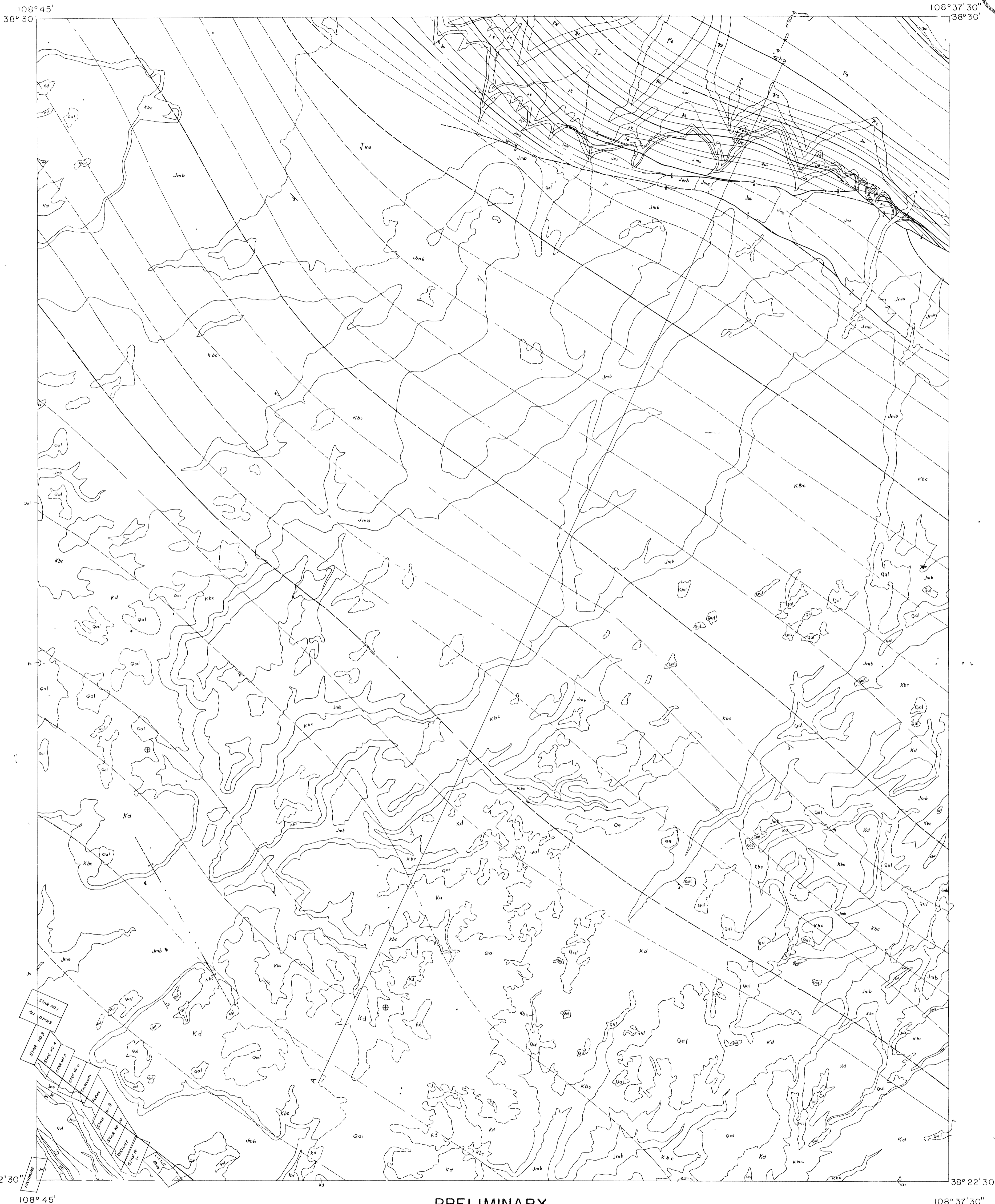
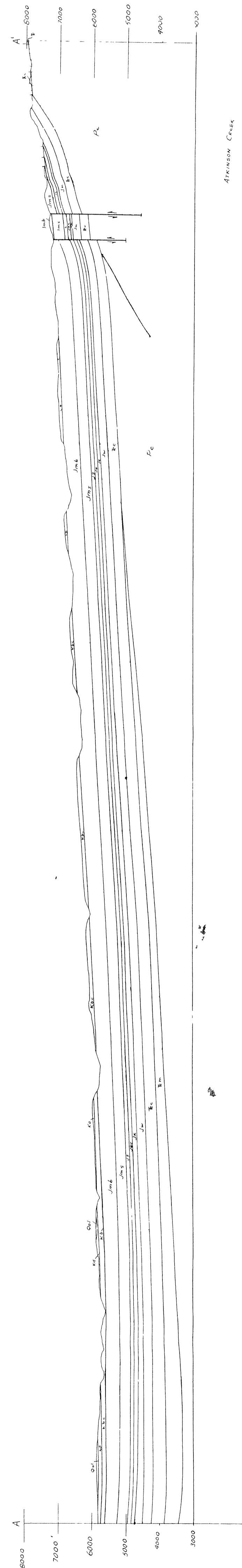


1877
(200)



EXPLANATION	
QAL	ALLUVIUM
UG	PEDIMENT GRAVEL
ULS	LANDSLIDE DEPOSITS
UNCONFORMITY	
KDC	DAKOTA SANDSTONE
UNCONFORMITY	
KBC	BURRO CANYON FORMATION
JMB	MORRISON FORMATION
JMS	MORRISON FORMATION
UNCONFORMITY	
JS	SUMMERVILLE FORMATION
JEC	ENTRADA SANDSTONE AND CARMEL FORMATION UNDIVIDED
UNCONFORMITY	
JN	NAVAJO SANDSTONE
JK	KAYENTA FORMATION
JW	WINGATE SANDSTONE
THC	GHINLE FORMATION
UNCONFORMITY	
PC	GNEISS, SCHIST, GRANITE, AND PEGMATITE
CONTACT	
(DASHED WHERE APPROXIMATELY LOCATED)	
FAULT	
(DASHED WHERE APPROXIMATELY LOCATED, DOTTED WHERE CONCEALED U, UP THROWN SIDE, D, DOWN THROWN SIDE)	
STRIKE AND DIP OF BEDS	
HORIZONTAL BEDS	
6000	
STRUCTURE CONTOUR	
(DRAWN ON TOP OF ENTRADA SANDSTONE, DASHED WHERE INFERRED OR APPROXIMATELY LOCATED CONTOUR INTERVAL 100 FEET DATUM IS MEAN SEA LEVEL)	
NOTE SOME SMALL AREAS OF OUTCROP ARE NOT MARKED CONTACTS ARE NOT CLOSED WHEN THE CONTACT TOUCHES A RIVER RIVERS NOT SHOWN	



PRELIMINARY
GEOLOGIC MAP AND SECTION OF THE
ATKINSON CREEK QUADRANGLE, COLORADO

Photographed from blue line compilation
sheet of U.S. Geological Survey topographic
Atkinson Creek quadrangle base map



Because of distortion in reproduction and printing processes, scale of map and section
are only approximate

This map is preliminary and has not
been edited or reviewed for conformity
with U.S. Geological Survey
standards and nomenclature