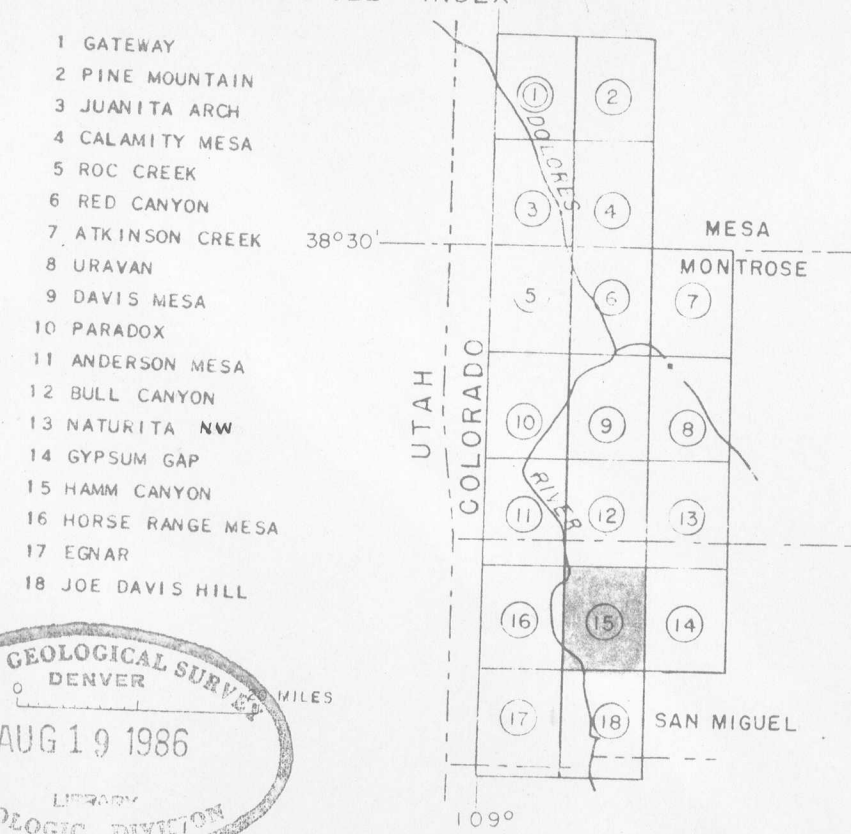
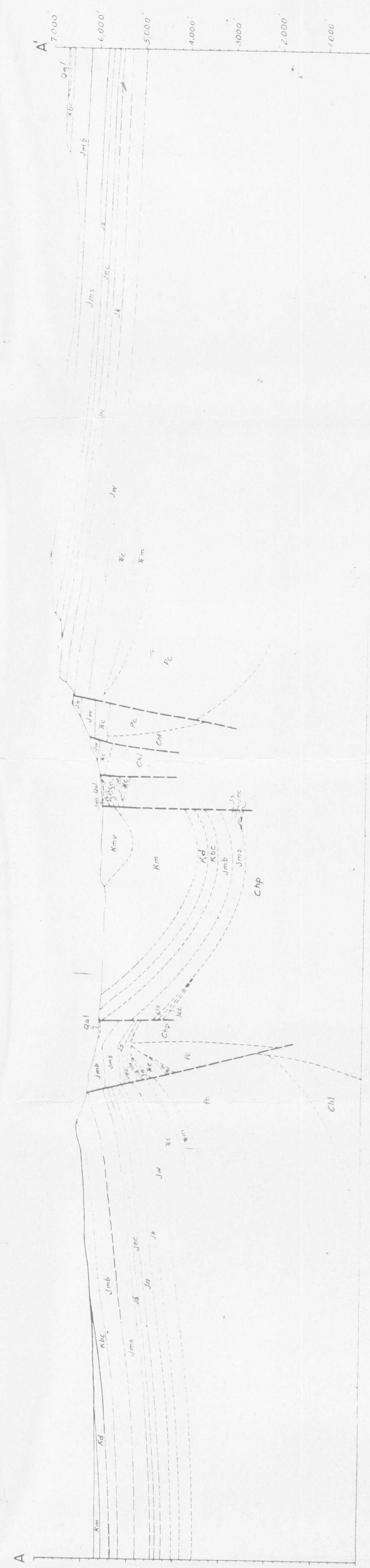
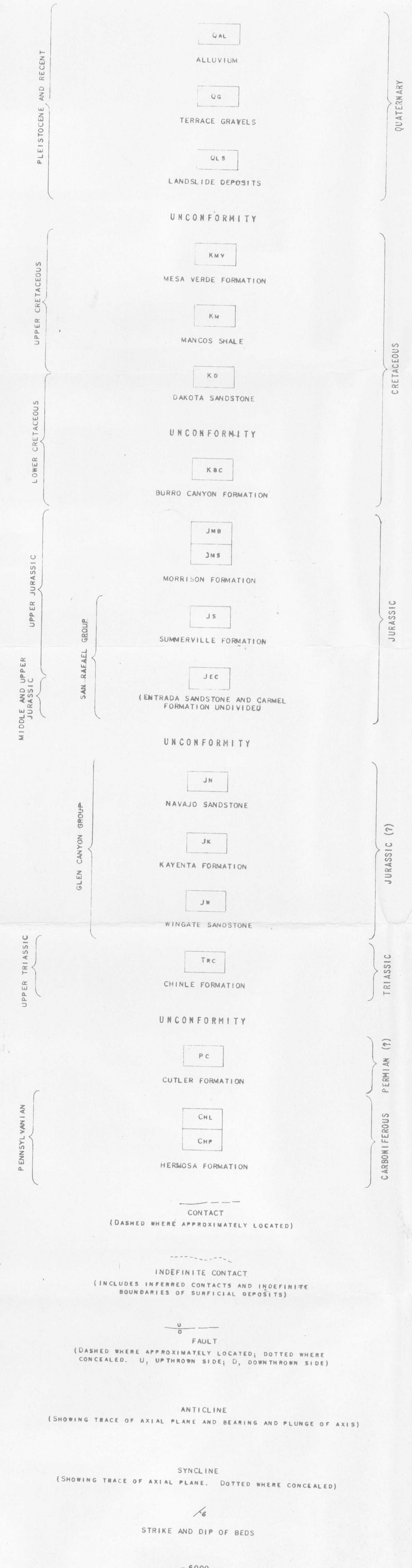


Prepared in cooperation with the
Atomic Energy Commission



EXPLANATION



PRELIMINARY
GEOLOGIC MAP AND SECTION OF THE
HAMM CANYON QUADRANGLE, COLORADO

1 1/2 0 1 MILE
Because of distortion in reproduction and printing processes, scale of map and sections are only approximate

This map is preliminary and has not been edited or reviewed for conformity with U.S. Geological Survey standards and nomenclature

Geology by M.L. Stokes, D.A. Phoenix, 1944-45; revised by F.W. Cater Jr., 1951

NOTE: SOME SMALL AREAS OF OUTCROP ARE NOT MARKED. CONTACTS ARE NOT CLOSED WHEN THE CONTACT TOUCHES A RIVER. RIVERS NOT SHOWN

Photographed from blue line compilation sheet of U.S. Geological Survey topographic Hamm Canyon quadrangle base map

7674
(005)