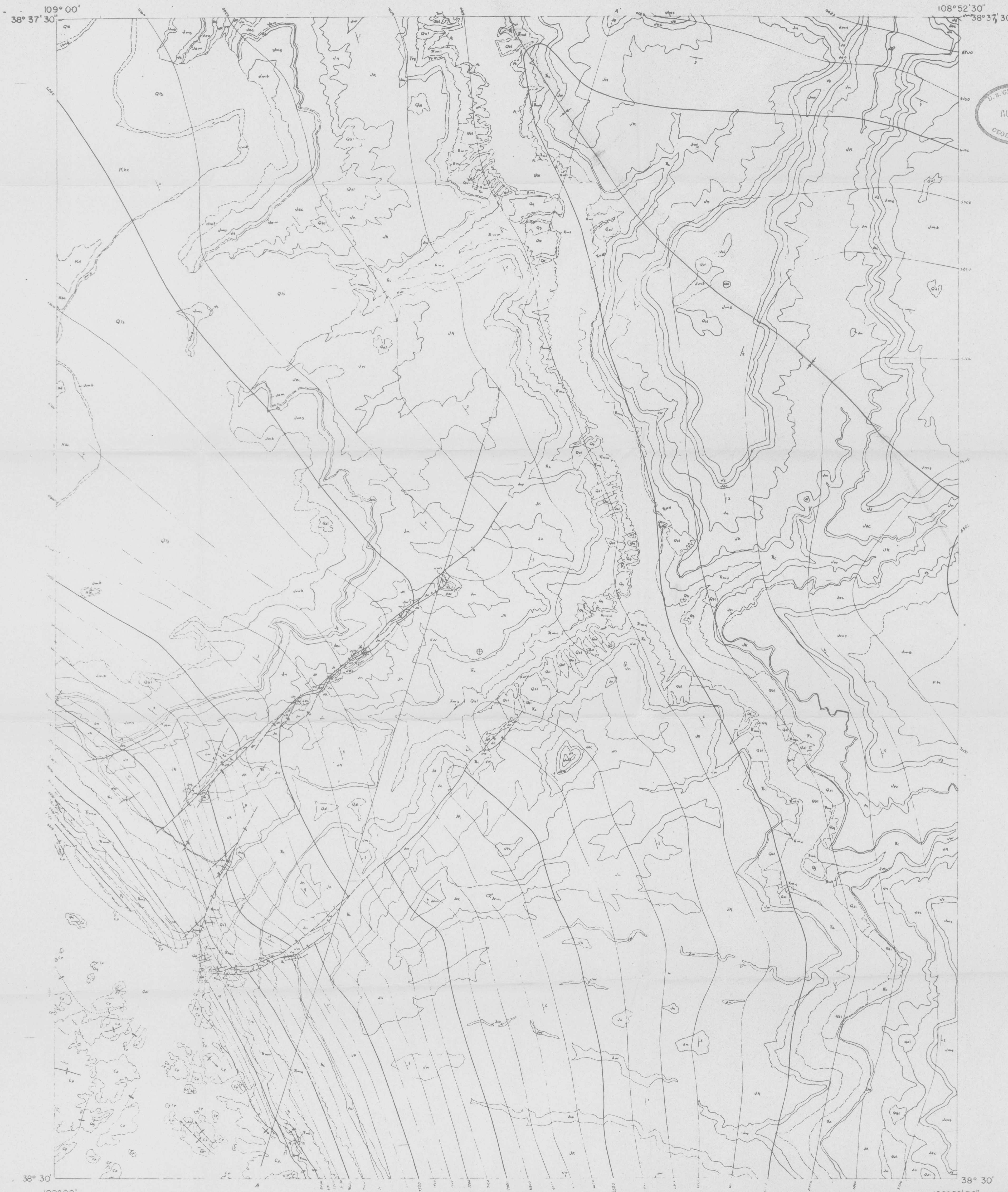
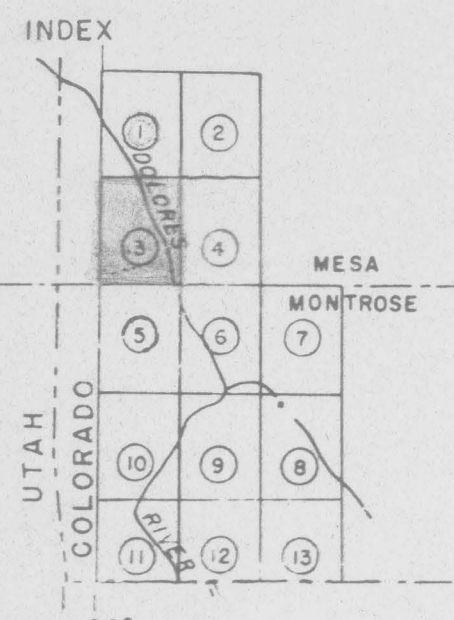


Prepared in cooperation with the
Atomic Energy Commission

167mm
(200)

- 1 GATEWAY
- 2 PINE MOUNTAIN
- 3 JUANITA ARCH
- 4 CALAMITY MESA
- 5 ROC CREEK
- 6 RED CANYON
- 7 ATKINSON CREEK
- 8 URAVAN
- 9 DAVIS MESA
- 10 PARADOX
- 11 ANDERSON MESA
- 12 BULL CANYON
- 13 NATURITA



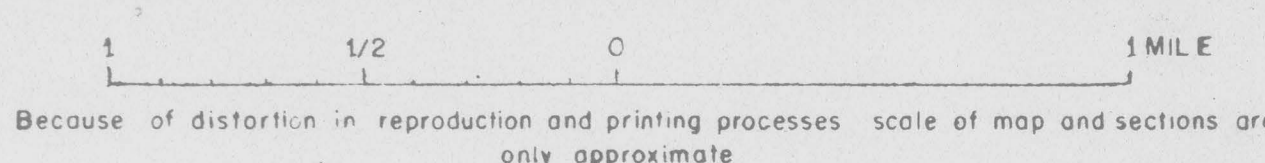
U.S. GEOLOGICAL SURVEY
DENVER
AUG 19 1986
LIBRARY
GEOLOGIC DIVISION

EXPLANATION

- | | | |
|---|--|---------------|
| QAL | ALLUVIUM | QUATERNARY |
| Qc | TERRACE GRAVELS | |
| Qls | LANDSLIDE DEPOSITS | |
| UNCONFORMITY | | |
| Kd | DAKOTA SANDSTONE | CRETACEOUS |
| Brc | BURRO CANYON FORMATION | |
| Jm | MORRISON FORMATION | JURASSIC |
| Jx | SUMMERVILLE FORMATION | |
| Jec | ENTRADA SANDSTONE AND CARMEL FORMATION UNDIVIDED | |
| UNCONFORMITY | | |
| Jn | NAVAJO SANDSTONE | JURASSIC (?) |
| Jk | KAYENTA FORMATION | |
| Jr | WINGATE SANDSTONE | |
| Jc | CHINLE FORMATION | |
| UNCONFORMITY | | |
| Tm | MOENCHI FORMATION | TRIASSIC |
| PC | CUTLER FORMATION | |
| Cp | WILD FORMATION | CARBONIFEROUS |
| Ch | HERMOSA FORMATION | |
| CONTACT (DASHED WHERE APPROXIMATELY LOCATED) | | |
| INDEFINITE CONTACT (INCLUDES INFERRED CONTACTS AND INDEFINITE BOUNDARIES OF SURFICIAL DEPOSITS) | | |
| FAULT (DASHED WHERE APPROXIMATELY LOCATED; DOTTED WHERE CONCEALED; U, UP THROWN SIDE; D, DOWN THROWN SIDE) | | |
| STRIKE AND DIP OF BEDS | | |
| STRIKE AND DIP OF BEDS IN PARADOX MEMBER OF HERMOSA FORMATION WHERE STRIKE AND DIP CANNOT BE PRECISELY MEASURED | | |
| STRIKE OF VERTICAL BEDS | | |
| HORIZONTAL BEDS | | |
| GENERALIZED STRIKE AND DIP OF CRAMPLED BEDS | | |
| GENERALIZED STRIKE OF RUMPLED BEDS SHOWING DIRECTION OF DIP | | |
| ANTICLINE (SHOWING TRACE OF AXIAL PLANE AND BEARING AND PLUNGE OF AXIS. DASHED WHERE APPROXIMATELY LOCATED) | | |
| CONCEALED ANTICLINE | | |
| SYNCLINE (SHOWING TRACE OF AXIAL PLANE AND BEARING AND PLUNGE OF AXIS. DASHED WHERE APPROXIMATELY LOCATED) | | |
| CONCEALED SYNCLINE | | |
| SCALP | | |
| MOUNTAIN | | |
| ENTRADA SANDSTONE, DASHED WHERE APPROXIMATELY LOCATED | | |
| CONTOUR | | |

Photographed from blue line compilation sheet of U.S. Geological Survey topographic Juanita Arch quadrangle base map

PRELIMINARY
GEOLOGIC MAP AND SECTION OF THE
JUANITA ARCH QUADRANGLE, COLORADO



This map is preliminary and has not been edited or reviewed for conformity with U.S. Geological Survey standards and nomenclature

Geology by E.M. Shoemaker, F.M. Cater Jr., and E.J. McElroy, 1968