

U.S. GEOLOGICAL SURVEY
DENVER
AUG 19 1986
LIBRARY
GEOLOGIC DIVISION
RECEIVED
JUL 22 1981
1677m
100
970
(200)



EXPLANATION

- Surficial deposits
- Tropic shale and Dakota sandstone, undifferentiated
- Winsor formation
- Curtis formation
- Entrada sandstone
- Carmel formation
- Navajo sandstone
- Kayenta formation
- Contact
Can be located within 30 feet horizontally.
- Contact
Can be located within 30 to 200 feet horizontally.
- Probable contact
- Conspicuous or resistant bed within a formation
May be traceable only locally.
- Fault
U, upthrown side; D, downthrown side. Dashed where approximately located. Queried where probable. Dotted where concealed.
- Linear feature uninterpretable on photograph
May be geologically significant.
- Strike and dip of beds
Computed by photogrammetric methods.
- Approximate strike and dip of beds
Based on photointerpretation.
- Inferred strike and dip of beds
Based on photointerpretation of areas where bedding is obscure.
- Strike of approximately vertical joints
Based on photointerpretation.
- Irrigation ditch
- Secondary road
- Trail

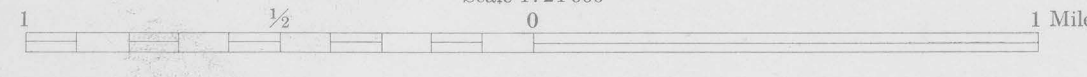
Lower(?) and Upper Cretaceous
Upper Jurassic
Middle and Upper Jurassic
JURASSIC
JURASSIC(?)
CRETACEOUS
QUATERNARY

Base map compiled by U.S. Geological Survey from vertical aerial photographs.
Aerial photographs used for photogeologic interpretation taken in June 1953.
Roads are classified as follows: Primary roads are maintained and graded, traversable by two-wheel-drive vehicles; secondary roads are traversable by four-wheel-drive vehicles and locally by two-wheel-drive vehicles; trails are not traversable by vehicles, except locally. When other information is lacking, roads are classified by their appearance on aerial photographs.

PHOTOLOGIC MAP
OF THE
RAINBOW POINT SW QUADRANGLE
KANE COUNTY, UTAH

By
P. P. Orkild

Scale 1:24,000



NW NE
SE
RAINBOW POINT
15-MINUTE QUADRANGLE

Geologic and geographic data from U.S. Geol. Survey Prof. Paper 226, 1951.
This map has been compiled mainly from photogeologic data and has not been checked in the field.
This preliminary report is distributed without editorial and technical review for conformity with official standards and nomenclature. It is not for public inspection or quotation.