

(NOT ON)

DEPARTMENT OF THE INTERIOR  
UNITED STATES GEOLOGICAL SURVEY

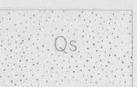
PREPARED IN COOPERATION WITH THE  
U. S. ATOMIC ENERGY COMMISSION

TRACE ELEMENTS MEMORANDUM REPORT 1019

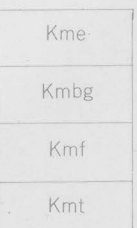
(MOUNT ELLEN-9)



EXPLANATION



Surficial deposits



Mancos shale  
Emergy sandstone member, Kme; Blue Gate shale member, Kmbg; Ferron sandstone member, Kmf; Tununk shale member, Kmt.

Contact

Dashed where approximately located.

Conspicuous bed within a formation

May be traceable only locally.



Fault

U, upthrown side; D, downthrown side. Dashed where approximately located.



Syncline showing trough line.

Approximately located.

Linear feature uninterpretable on photograph  
May be geologically significant.



Strike and dip of beds

Computed by photogrammetric methods.



Approximate strike and dip of beds

Based on photointerpretation.



Inferred strike and dip of beds  
Based on photointerpretation of areas where bedding is obscure.



Horizontal beds



Strike of approximately vertical joints  
Based on photointerpretation.

Irrigation ditch

Primary road

Secondary road

Trail

(NOT ON)

(NOT ON)

(NOT ON)

Base map modified from U.S. Geological Survey preliminary topographic map Mt. Ellen 2 SW quadrangle, Utah.  
Aerial photographs used for photogeologic interpretation taken in May 1948.

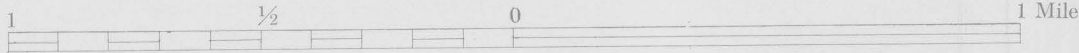
Roads are classified as follows: Primary roads are maintained and graded, traversable by two-wheel-drive vehicles; secondary roads are traversable by four-wheel-drive vehicles and locally by two-wheel-drive vehicles; trails are not traversable by vehicles, except locally. When other information is lacking, roads are classified by their appearance on aerial photographs.



PHOTOGEOLOGIC MAP  
OF THE  
MOUNT ELLEN-5 QUADRANGLE  
WAYNE COUNTY, UTAH

By  
W. R. Hemphill

Scale 1:24,000



1957

4	3	2	1
6	7	8	
12	11	10	9
13	14	15	16

MOUNT ELLEN  
QUADRANGLE

Geologic and geographic data from U.S. Geol. Survey Prof. Paper 228, 1953 and U.S. Geol. Survey prelim. topo. map, Mt. Ellen 2 SW quadrangle, Utah.

This map has been compiled mainly from photogeologic data and has not been checked in the field.

*This preliminary report is distributed without editorial and technical review for conformity with official standards and nomenclature. It is not for public inspection or quotation.*

(MOUNT ELLEN-VI)

1840

QUATERNARY

CRETACEOUS