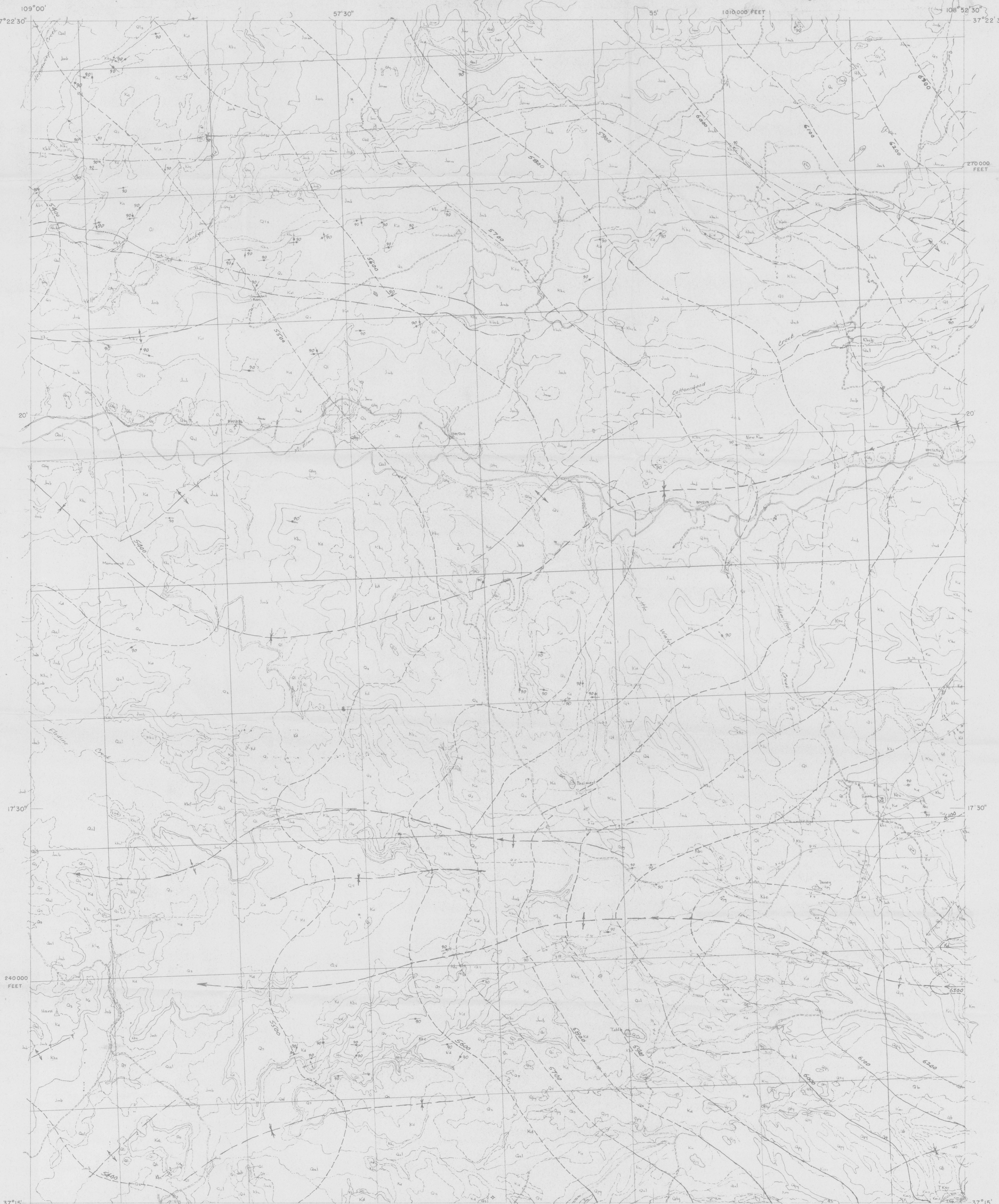
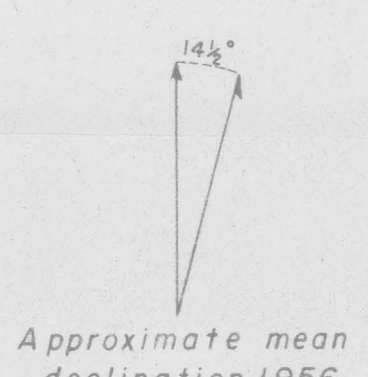


(200)
767/1100



Planimetric base map compiled from aerial photographs.
Polyconic projection. 10,000-foot grid based on Colo-
rado coordinate system, south zone. Horizontal and
vertical control by E. B. Ekren and F. N. Houser, 1956



SCALE 1:20,000
0 1/2 1 MILE

Geology mapped 1956

PRELIMINARY GEOLOGIC MAP OF THE MOQUI SW QUADRANGLE, MONTEZUMA COUNTY, COLORADO
BY
F. N. HOUSER AND E. B. EKREN