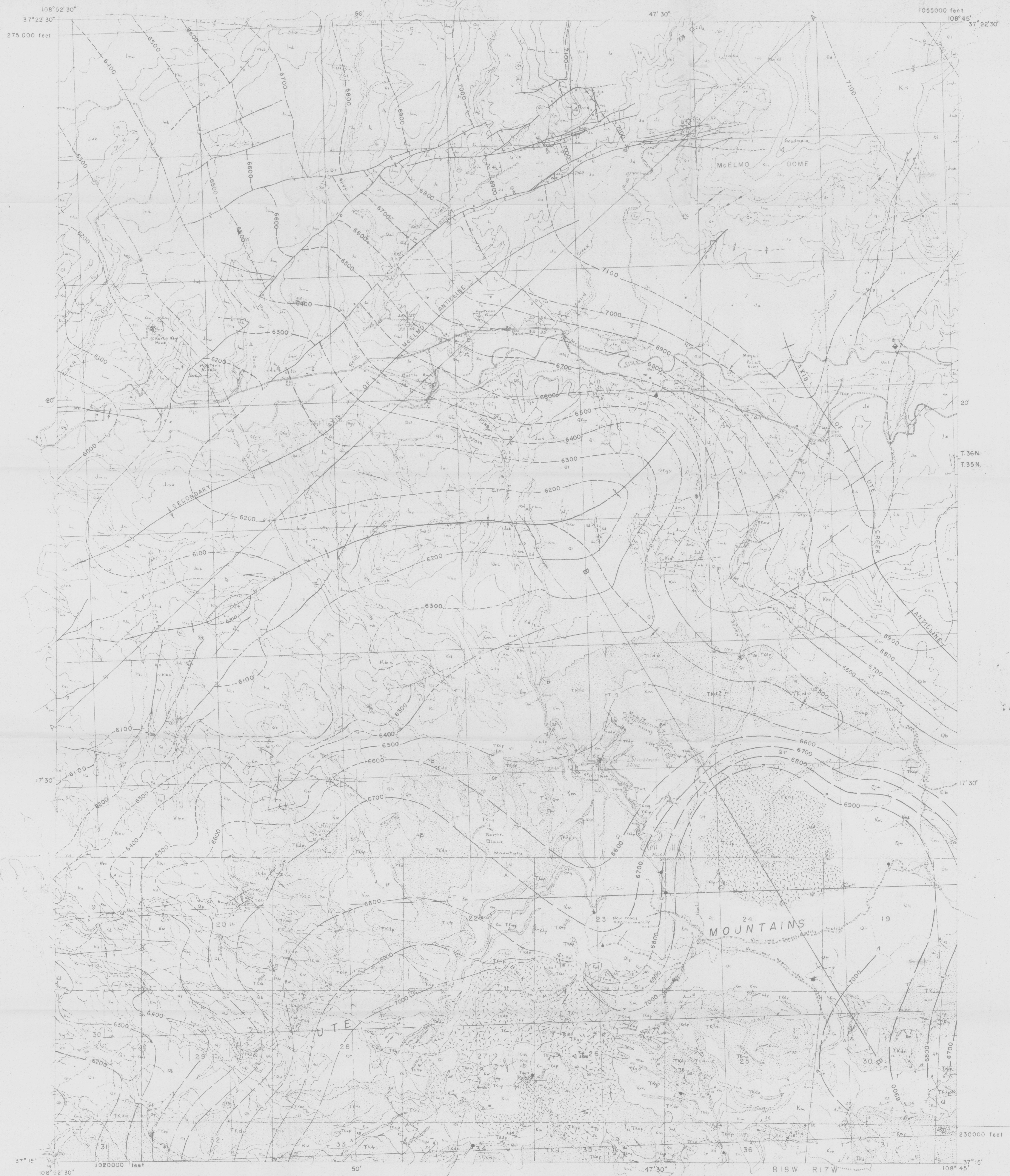
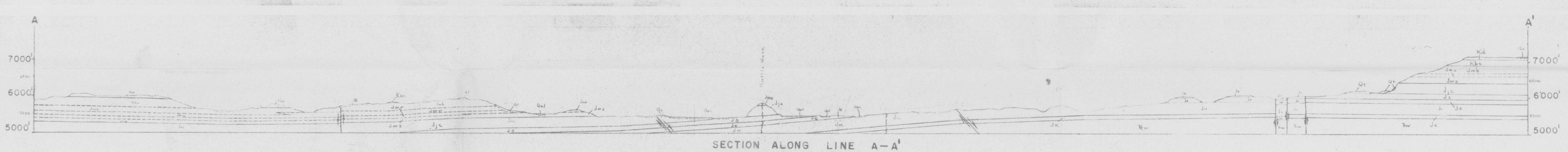


(200)  
T677m

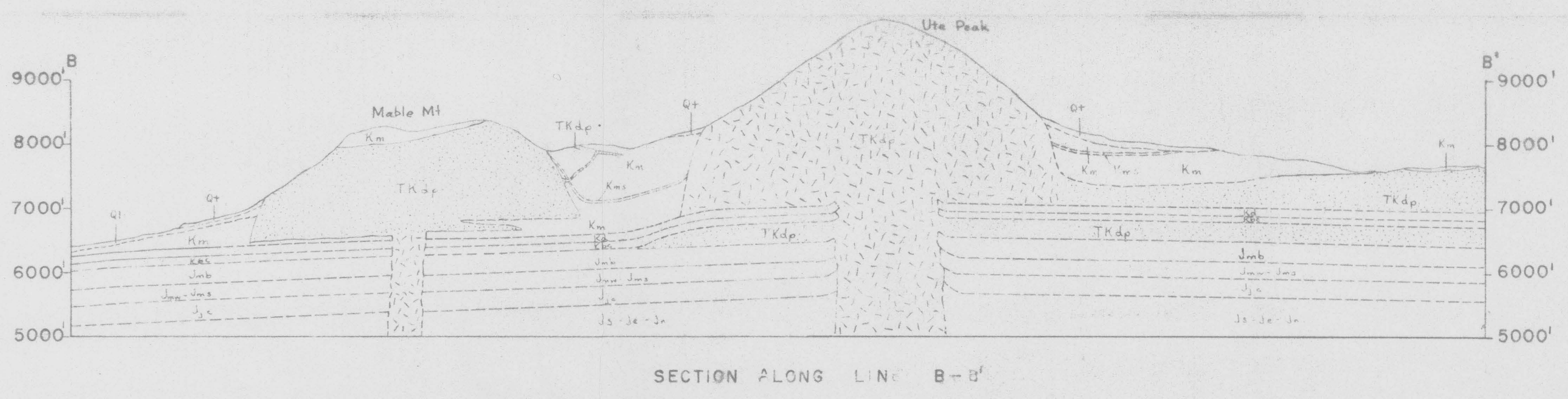


Planimetric base compiled from aerial photographs.  
Polyconic projection, 10,000-foot grid based on Colorado  
coordinate system, south zone. Horizontal and vertical  
control by Clyde Duren, Jr., E. B. Ekren, and F. N. Houser,  
1955-56

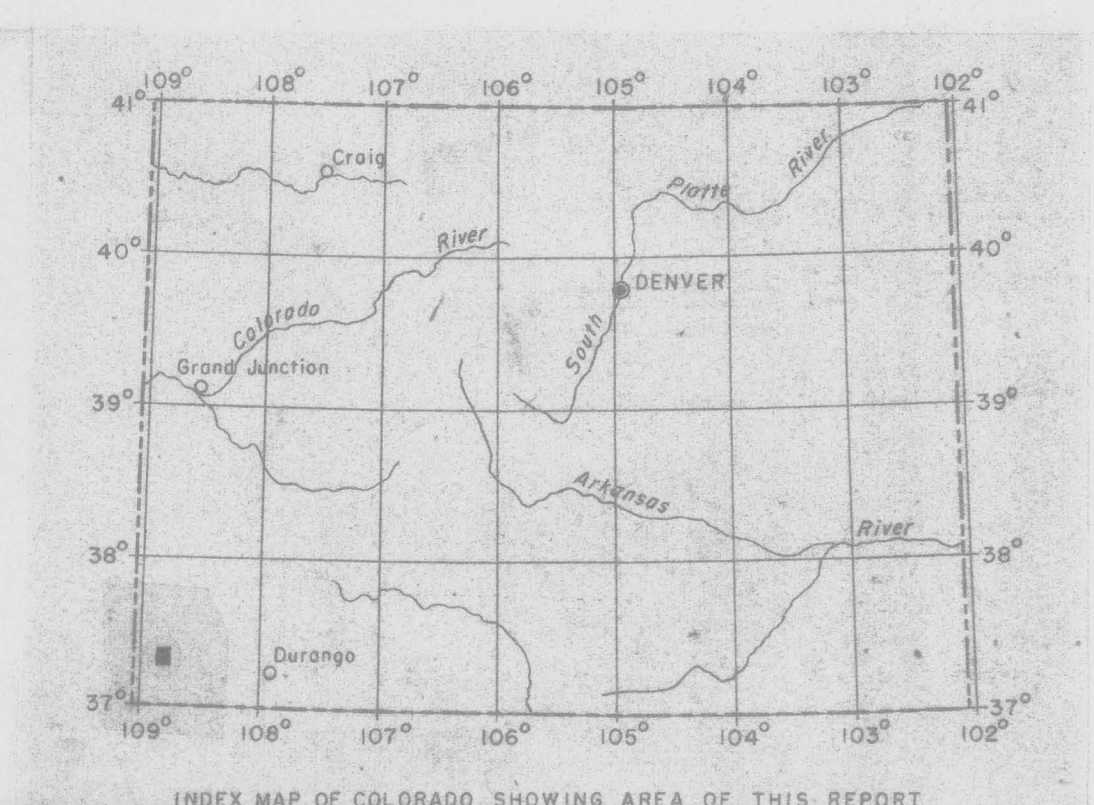
Geology mapped 1956



SECTION ALONG LINE A-A'

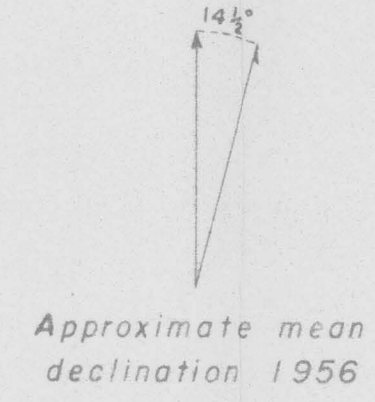


SECTION ALONG LINE B-B'



INDEX MAP OF COLORADO SHOWING AREA OF THIS REPORT

PRELIMINARY GEOLOGIC MAP OF THE MOQUI SE QUADRANGLE, MONTEZUMA COUNTY, COLORADO  
BY  
E. B. EKREN AND F. N. HOUSER



Approximate mean  
declination 1956