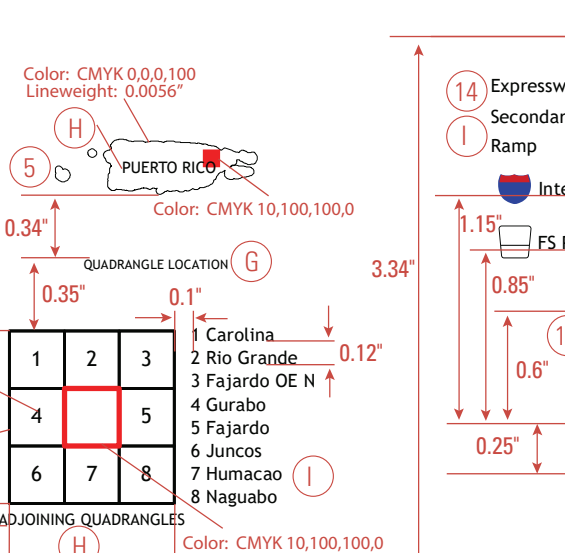
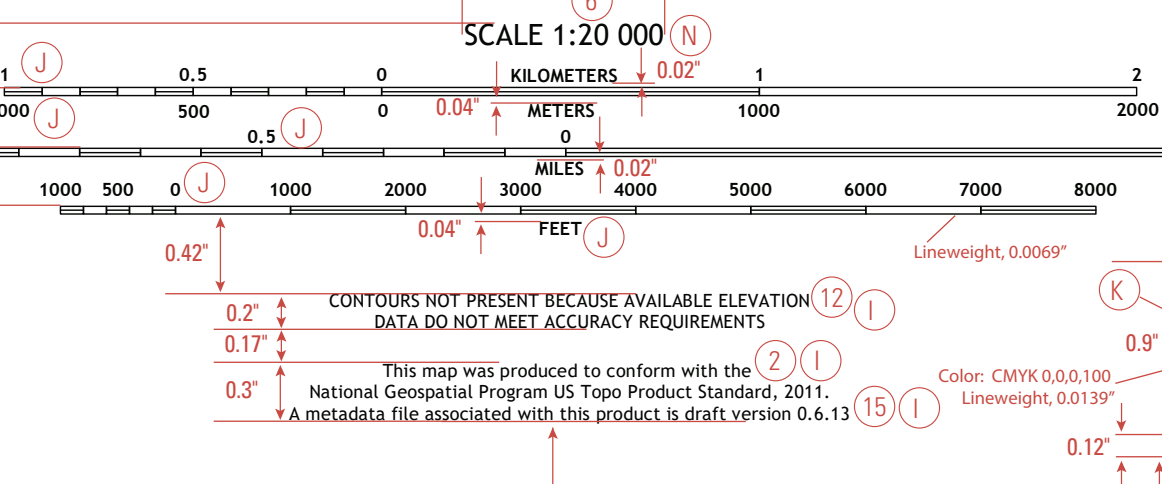
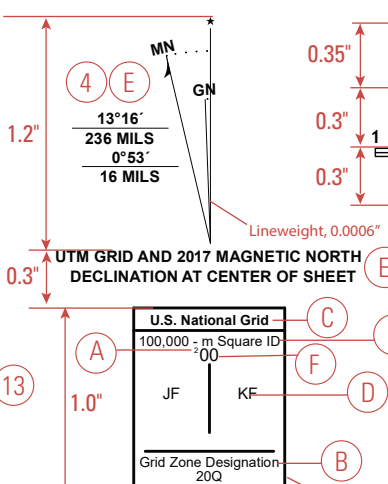


KEYED NOTES	
1	Show the following series note on the US Topo: 7.5-MINUTE SERIES
2	Standard publication year changes when US Topo Product Standard is updated.
3	Add a cooperators logo to the right of the US Topo logo if requested and provided by the cooperators. Center both logos as a unit in the map margin.
4	Center declination diagram between credit notes and scales.
5	Center location and adjoining quadrangle diagrams between the scales and the feature symbology legend.
6	Align scales with center of sheet.
7	Center the title block below the feature symbology legend.
8	The date in the title block is the year the geospatial PDF map was generated.
9	Title shown in all capital letters as: "MAP TITLE," TWO-LETTER ABBREVIATION FOR STATE NAME "
10	Add a cooperators note and legend information if requested and provided by the cooperators. Center them at the bottom of the feature symbology legend.
11	Content in the source credit notes will vary depending upon the sources used.
12	If contours are not included, then the contour interval note will read CONTOURS NOT PRESENT BECAUSE AVAILABLE ELEVATION DATA DO NOT MEET ACCURACY REQUIREMENTS
13	If contours are not included, then the contour credit note will read Not Available
14	Include U.S. Forest Service (USFS) road symbology in map legend when the map content includes a USFS area.
15	Version number changes when metadata file version is updated.
16	Show the following use constraint note on the US Topo: This map is not a legal document. Boundaries may be generalized for this map scale. Private lands within government reservations may not be shown. Obtain permission before entering private lands.
17	Title shown in all capital letters as: "MAP TITLE," QUADRANGLE "
18	State name shown in all capital letters as: "STATE NAME " "STATE NAME - STATE NAME " (When quadrangle is located in more than one state, where state names are listed in descending order by area within the quadrangle, separated by hyphens with no spaces.) "STATE NAME - COUNTY NAME CO." (When entire quadrangle is in one county or the only county boundary on the map cannot be labeled, "County Name" is followed by the abbreviation for "County", "CO." County equivalent names, such as "Census Area" or "Borough", are used instead of "County Name"; if applicable.)
19	Space between margins and projection line varies with latitude and longitude. (Projection lines are slightly curved lines, with the degree of curvature varying with latitude and longitude.)

MARGINAL TYPE STYLES AND SIZES	
LETTER CODE	TYPE SPECIFICATION
A	3-point Arial
B	5.25-point Arial
C	5.25-point Arial Bold
D	6-point Arial
E	6-point Arial Bold
F	6.75-point Arial
G	5-point Trebuchet MS
H	6-point Trebuchet MS
I	7-point Trebuchet MS
J	7-point Trebuchet MS Bold
K	8-point Trebuchet MS
L	9-point Trebuchet MS Bold
M	10-point Trebuchet MS Bold
N	11-point Trebuchet MS
O	11-point Trebuchet MS Bold
P	12-point Trebuchet MS
Q	12-point Trebuchet MS Bold

Produced by the United States Geological Survey
North American Datum of 1983 (NAD83)
World Geodetic System of 1984 (WGS84), Projection and
1,000-meter grid/Universal Transverse Mercator, Zone 20Q
This map is not a legal document. Boundaries may be generalized for this map scale. Private lands within government reservations may not be shown. Obtain permission before entering private lands.



ROAD CLASSIFICATION	
14	Expressway
13	Secondary Highway
12	Local Road
11	Ramp
10	Interstate Route
9	US Route
8	State Route
7	FS Primary Route
6	FS Passenger Route
5	FS High Route
4	Clearance Route

