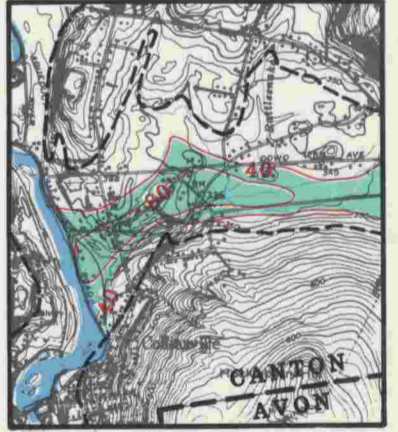
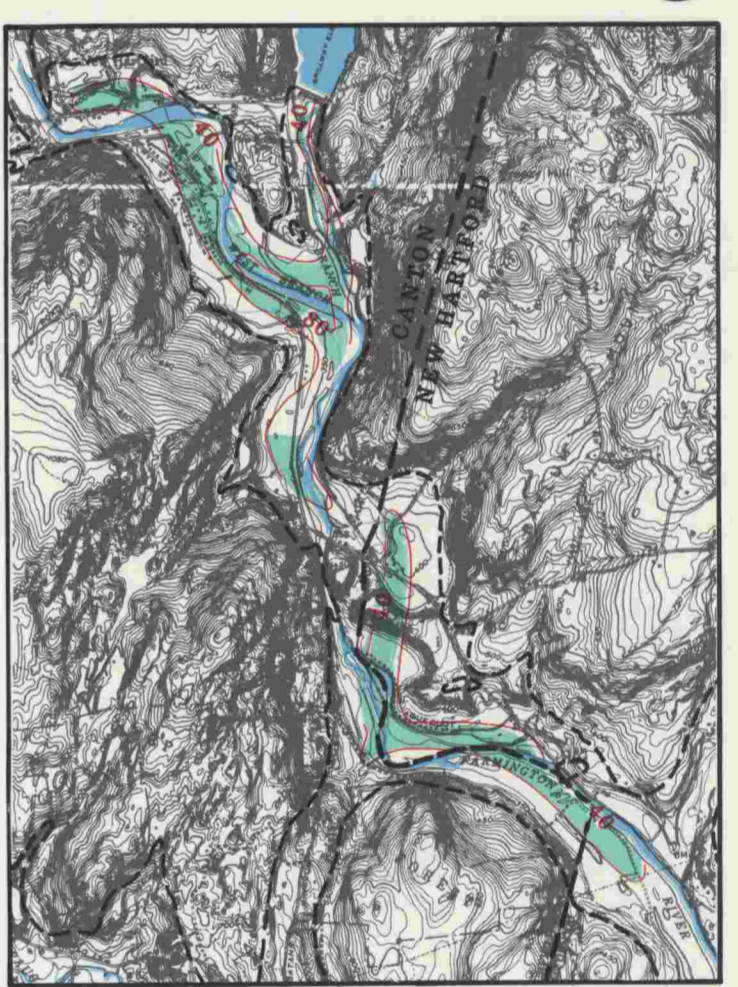
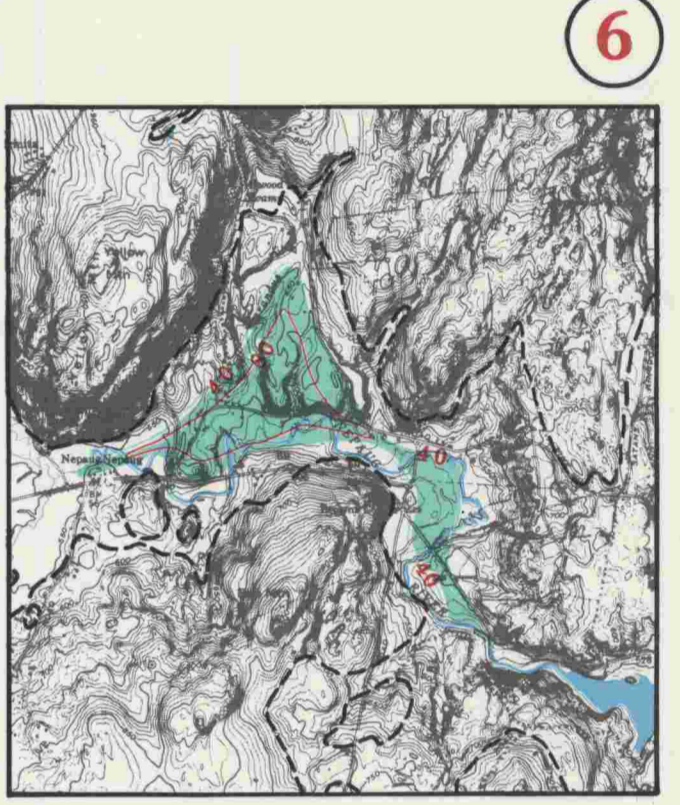
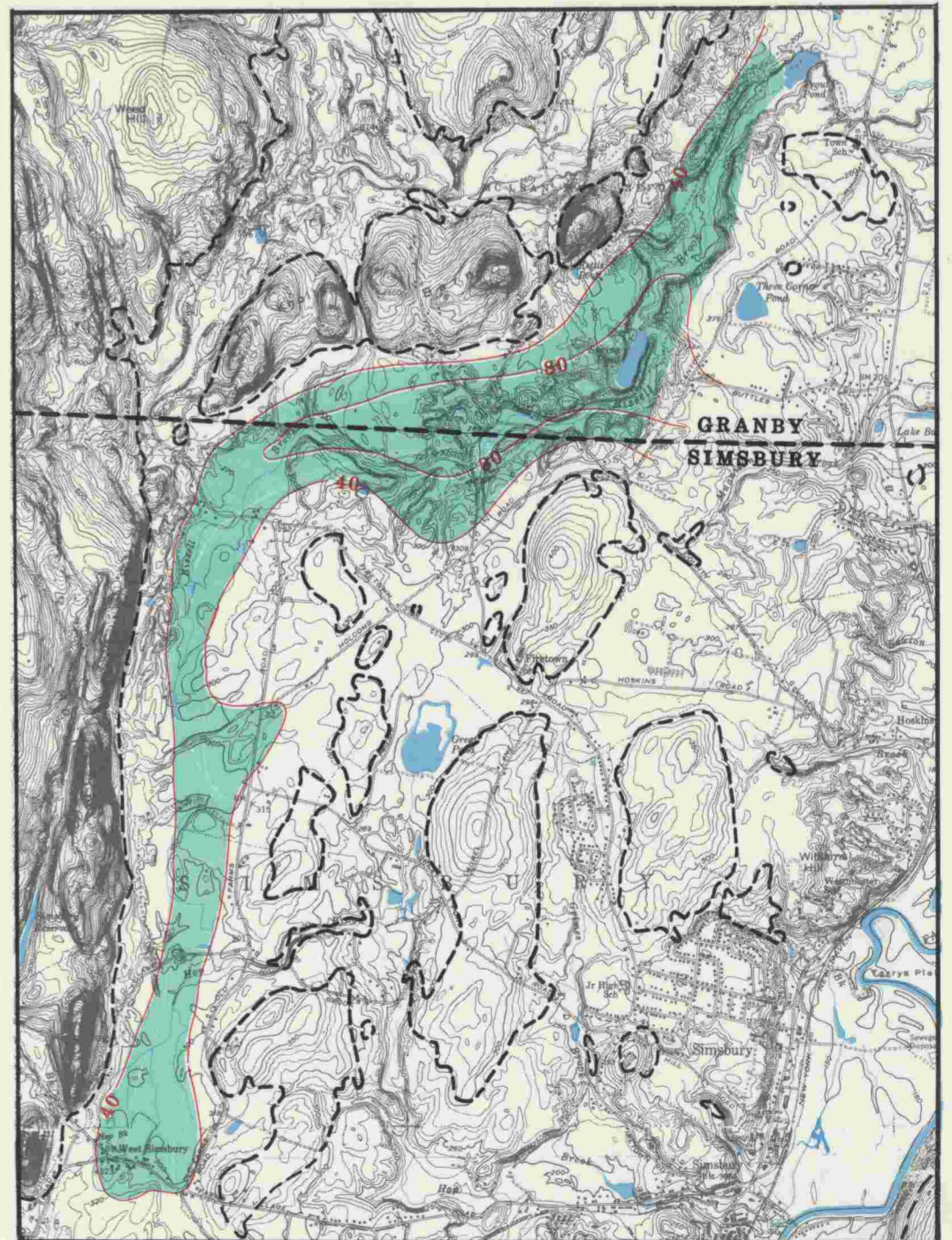
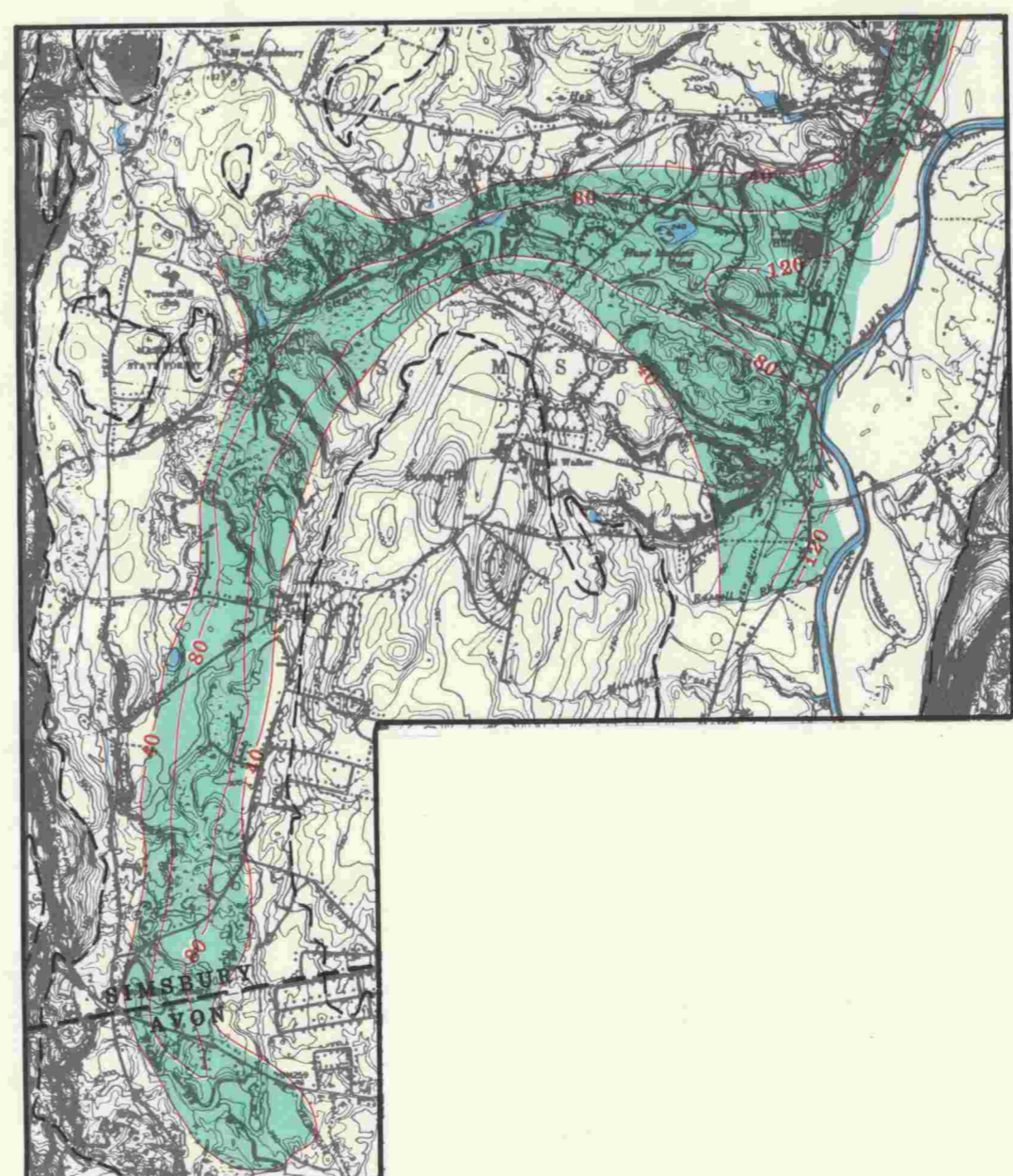
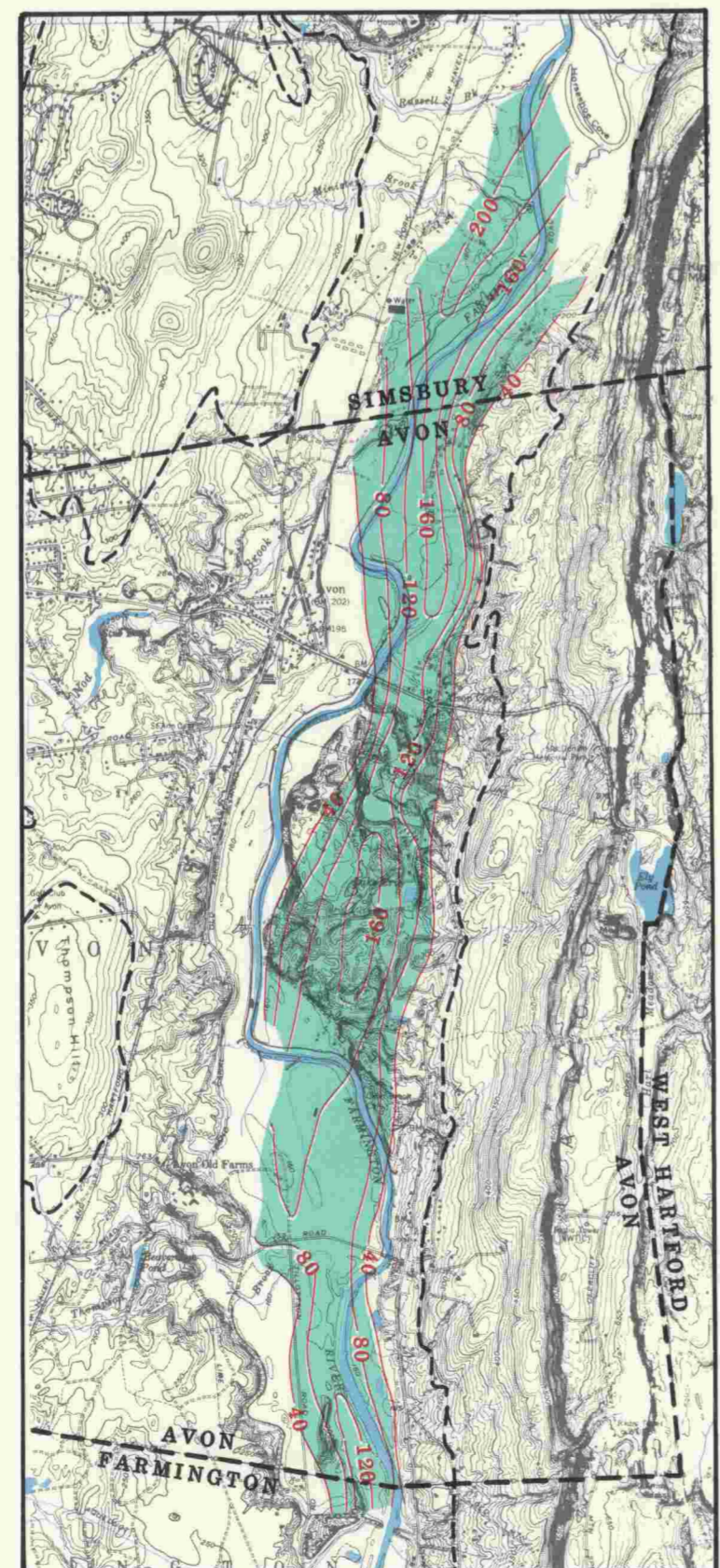
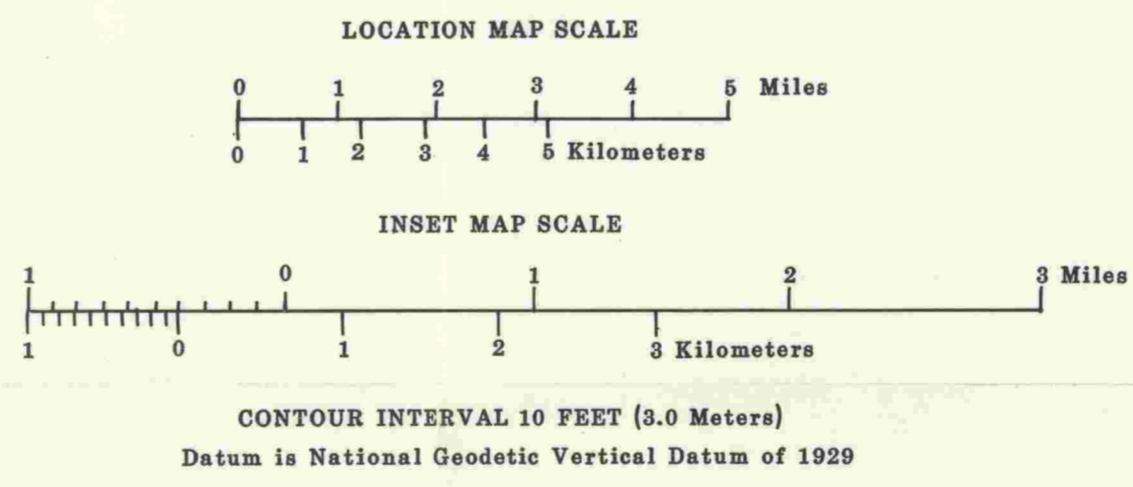


**EXPLANATION**

- BASIN DRAINAGE DIVIDE
- TOWN BOUNDARY
- Usable storage in reservoirs, in millions of gallons.
- STREAMFLOW--Value shown is streamflow equaled or exceeded 90 percent of the time in millions of gallons per day. Values underlined represent actual flows at gaging station. Values not underlined represent computed values based upon gaging station data.
- FAVORABLE AREAS--Areas favorable for large-scale development of ground-water for industrial, commercial, irrigation, and public supply.
- CONTACT BETWEEN STRATIFIED DRIFT AND TILL OR BEDROCK AREAS.
- LINE OF EQUAL SATURATED THICKNESS OF STRATIFIED DRIFT--Values shown are in feet. Contour interval 40 feet.



SUMMARY OF WATER AVAILABLE IN THE FARMINGTON RIVER BASIN