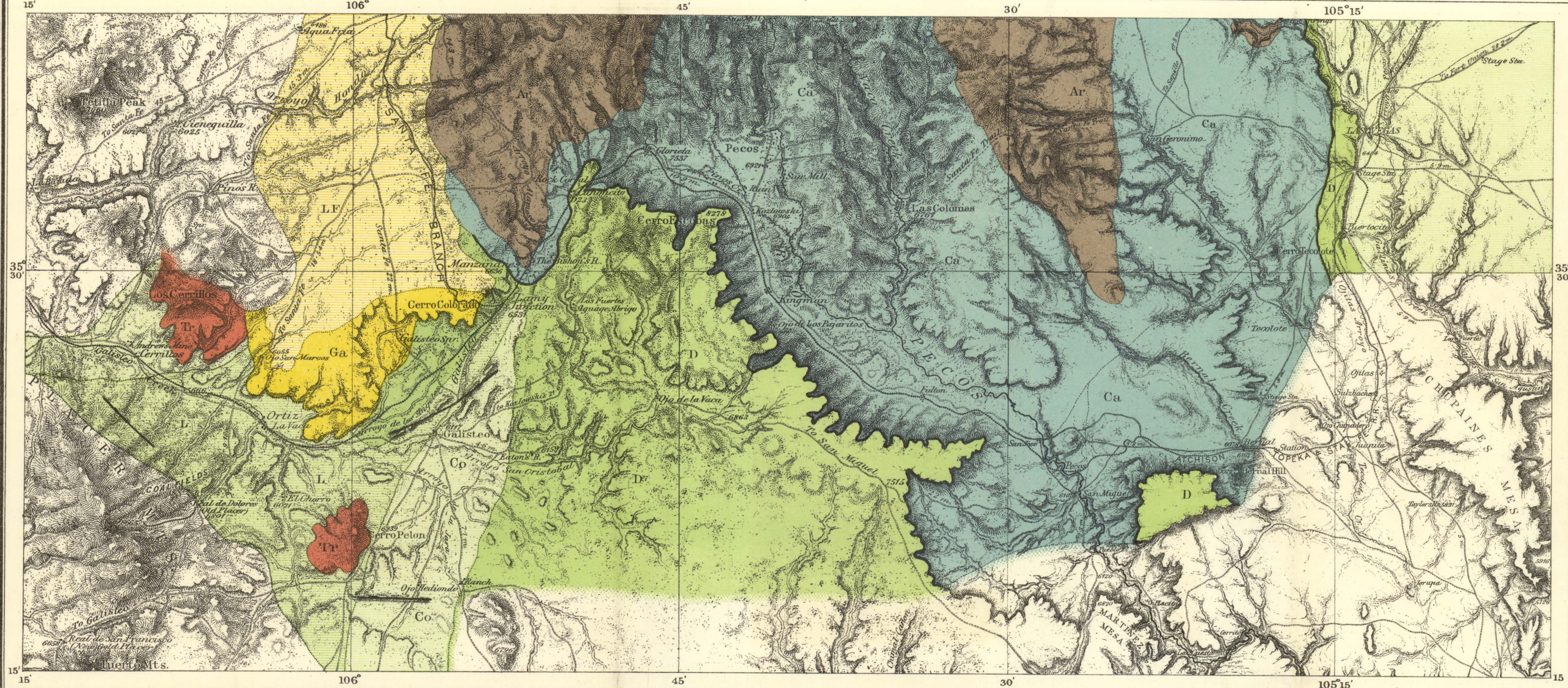
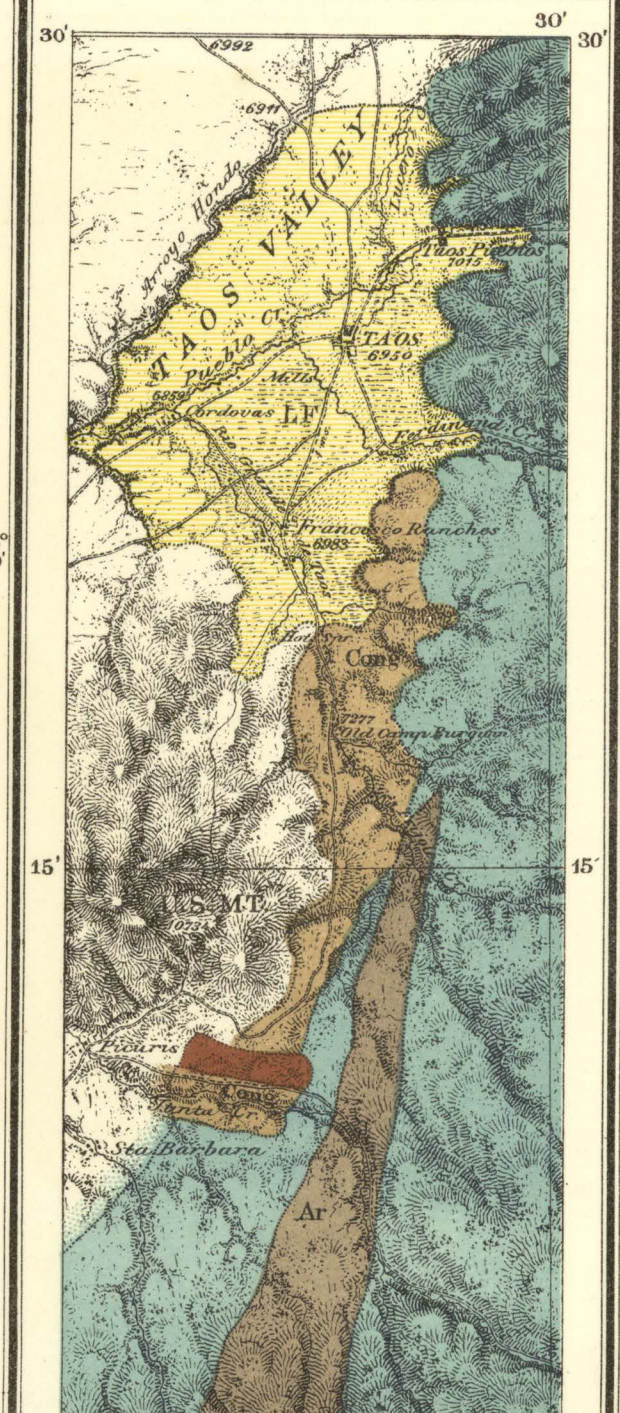




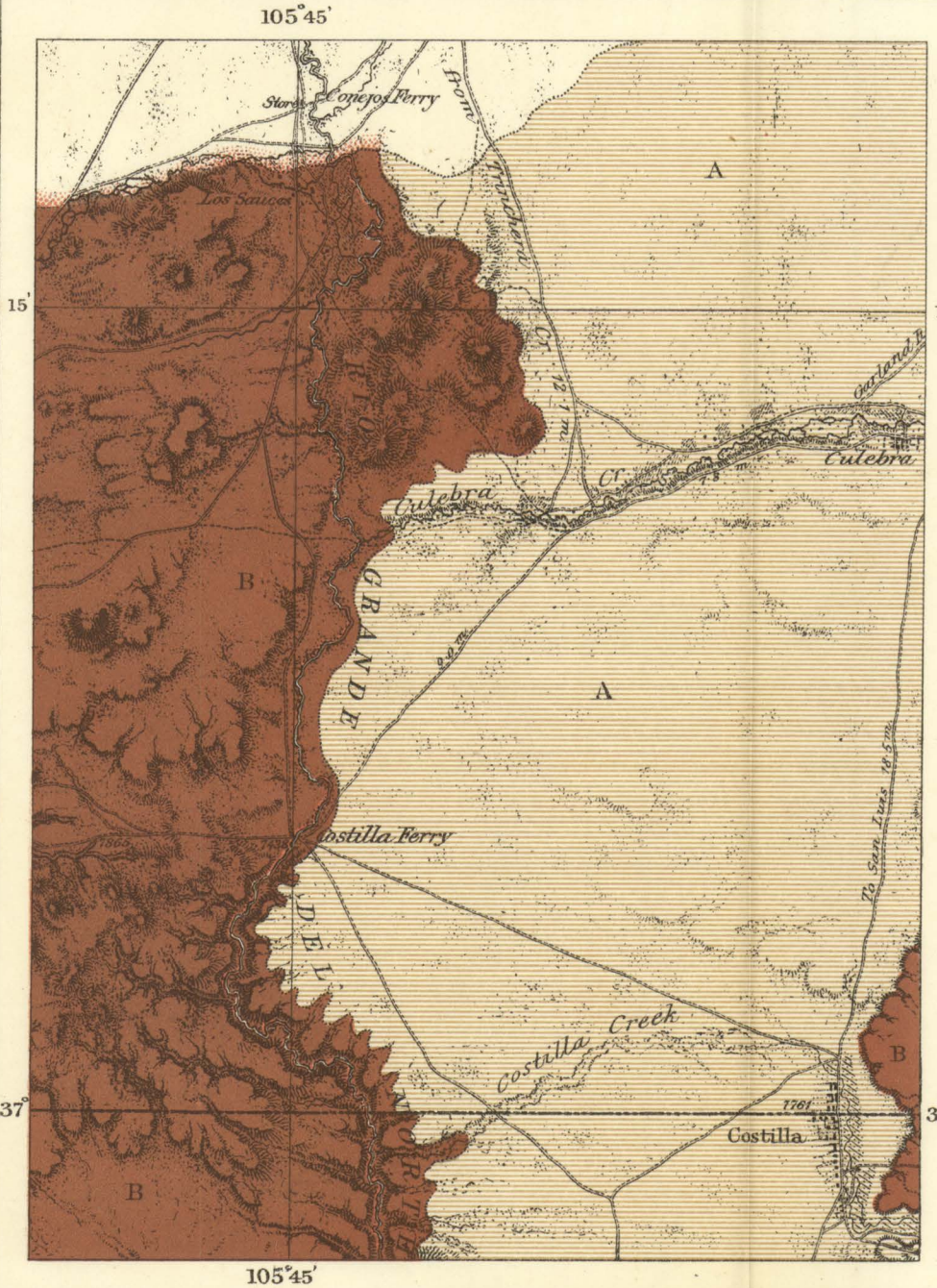
PART OF NORTH CENTRAL NEW MEXICO. ATLAS SHEETS 77 (B) 78 (A)



ATLAS SHEET No. 69 (D)



PARTS OF SOUTHERN COLORADO AND NORTHERN NEW MEXICO. ATLAS SHEET No. 69 (B)



PART OF NORTH CENTRAL NEW MEXICO.



- Ar Archæan
 - Ca Carboniferous
 - Linear Outcrop of Jura Trias
 - Dikes
 - D Dakota
 - Co Colorado
 - L Laramie
 - Ga Galisteo Sandstone
 - LF Loup Fork or Santa Fe Marl
 - A Alluvium (Lake Basins)
 - Cong. Drift Conglomerate
 - Tr Trachyte and Rhyolite
 - B Basalt
- CRETACEOUS
- TERTIARY
- QUATERNARY
- IGNEOUS ROCK

Issued June 30, 1881.

EXPEDITIONS of 1873, 1878 and 1879 Under the Command of

Scale 1 Inch to 4 miles or 1:253440.

1st. Lieut. Geo. M. Wheeler, Corps of Engineers U.S. Army

Prof. John J. Stevenson, Geological Assistant.

NOTE. The Loup Fork of Sheet 69 D. is from determinations of Prof. Cope, the Carboniferous south of Nambe Creek, and west of Archæan, from Dr. Oscar Loew. The northern extension of this belt is partly conjectural.

BY ORDER OF THE HONORABLE THE SECRETARY OF WAR UNDER THE DIRECTION OF BRIG. GEN. H. G. WRIGHT, CHIEF OF ENGINEERS U. S. ARMY.