

MIO 9

September 1971

# **aerial photographic reproductions**



# aerial photographic reproductions

The Map Information Office, U. S. Geological Survey, Washington, D.C. 20242 maintains records of aerial photographic coverage of the United States and outlying areas, based on reports from Federal and State agencies and commercial companies. From these records, the Map Information Office furnishes data to prospective purchasers on available photography and the agency holding the aerial film.

## GEOLOGICAL SURVEY PHOTOGRAPHY

Geological Survey *vertical* aerial photography is obtained primarily for topographic and geologic mapping. Reproductions from this photography are usually satisfactory for general use. Because reproductions are not stocked, but are custom processed for each order, *they cannot be returned for credit or refund.*

For photographs of restricted areas, the purchaser must obtain clearance from the appropriate military authorities. Sales offices of the Geological Survey will advise purchasers how to submit application for clearance.

The Survey also uses *low-oblique* photography for some mapping projects. This

specialized type of photography is taken with cameras tilted approximately 20° from the vertical. It is described in detail in a leaflet, "Twin Low-Oblique Photography," which is available free from Survey sales offices. Prospective purchasers who are not familiar with this photography should study this leaflet before purchasing prints.



River Meander, Virginia

Reproductions of Survey aerial photographs are sold with the understanding that the purchaser will not use them to show, by implication or otherwise, that the Department of the Interior or the Geological Survey endorses any product.

Orders will be filled as quickly as laboratory conditions permit but *official requirements for mapping will be given priority whenever necessary.*

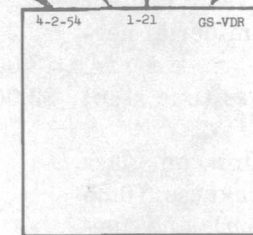


Ely, Minnesota

## PRINT SIZES

*Contact prints* are the same size as aerial negatives, approximately 9 × 9 inches.

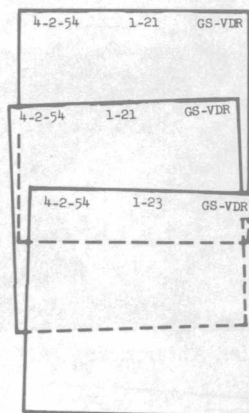
| Date of<br>Photgy. | Roll<br>No. | Print<br>No. | Project<br>Symbol |
|--------------------|-------------|--------------|-------------------|
|                    | 4-2-54      | 1-21         | GS-VDR            |



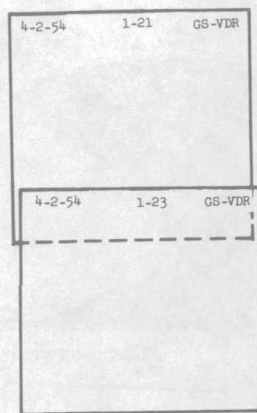
Example A Where the scale of the photography is 1:24,000, the area covered by a contact print is about 12 square miles.

Example B Where the scale of the photography is 1:63,360, the area covered by a contact print is about 81 square miles.

Prints are available with stereoscopic overlap or without such overlap (pictorial coverage). Photographs with stereoscopic overlap, when viewed with a stereoscope, will permit the observer to obtain a mental impression of a 3-dimensional model. Stereoscopic coverage requires about twice as many prints as pictorial photography. Orders for photographs or requests for information should specify which type is needed.



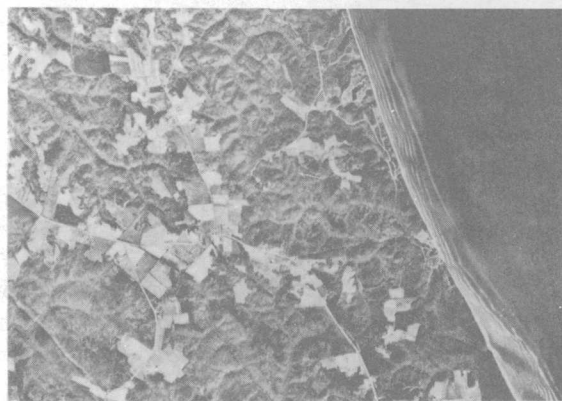
Coverage with stereo-  
scopic overlap



Pictorial coverage

*Enlargements* to an exact ratio or to a specific scale are available. If ratio factors are not furnished by the purchaser, enlargements will be processed to ratios derived from lens focal lengths and flight heights specified in the photographic contract or reported by the contractor. Permissible tolerance in flight height combined with ground relief, shrinkage or expansion of paper caused by atmospheric or other conditions, can cause considerable variation in scale.

Prints are processed only from whole negatives; prints of selected parts of negatives are not available.



Scientists Cliffs, Maryland

## PHOTOGRAPHY ORDERS

Because many types of reproductions are available, requests should state the purpose for which the photographs are desired and define the specific area of interest by means of a detailed description, sketch, or latitude and longitude position. The size of photographs and type of coverage (pictorial or stereoscopic) should also be specified.

Requests for reproduction of Geological Survey aerial photography for the States and possessions listed below may be sent to the following Regional Headquarters:

Atlantic Region Engineer  
U.S. Geological Survey  
1109 N. Highland St.  
Arlington, Va. 22210

Alabama, Connecticut, Delaware, Florida, Georgia, Indiana, Kentucky, Maine, Maryland, Massachusetts, New Hampshire, New Jersey, New York, North Carolina, Ohio, Pennsylvania, Rhode Island, South Carolina, Tennessee, Virginia, Vermont, West Virginia, Puerto Rico, Virgin Islands, U.S.

Central Region Engineer  
U.S. Geological Survey  
Box 133  
Rolla, Mo. 65401

Arkansas, Illinois, Iowa, Kansas, Louisiana, Michigan, Minnesota, Mississippi, Missouri, Oklahoma, Nebraska, North Dakota, South Dakota, Wisconsin.

Rocky Mountain Region Engineer  
U.S. Geological Survey  
Building 25, Federal Center  
Denver, Colo. 80225

Alaska, Colorado, Montana, New Mexico, Texas, Wyoming.

Pacific Region Engineer  
U.S. Geological Survey  
345 Middlefield Road  
Menlo Park, Calif. 94025



Arizona, California, Hawaii, Idaho, Nevada, Oregon, Utah, Washington.

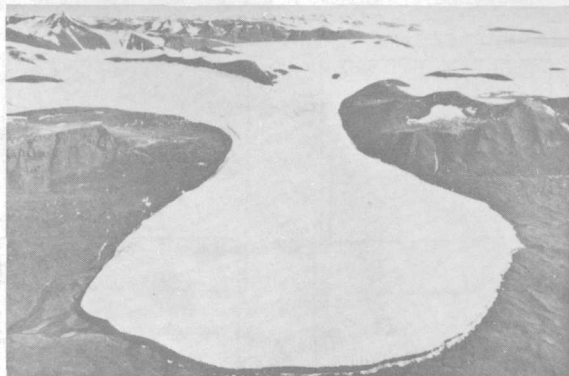
Shipment by parcel post or railway express is prepaid. Extra charges for shipment by Air Express or Airmail, and Special Delivery are paid by the purchaser.

Check, money order, or draft payable to the U.S. Geological Survey must accompany the order. Refund will be made for any part of the order that is not filled.



Beach Ridges, Florida

*Photoindexes* are available for practically all Geological Survey aerial photography. These show the assemblies of prints in standard quadrangle units (generally  $7\frac{1}{2}$ -minute units, but in some cases, 15-minute units), so that from the indexes a prospective purchaser can select prints covering areas in which he is interested. Where large areas are involved, photoindexes are essential for selecting prints and should be requested. In addition, photoindexes are available showing high-altitude photography held by the Geological Survey, generally in units of  $1^\circ \times 2^\circ$ , but sometimes in units of  $1^\circ \times 1^\circ$  or  $2^\circ \times 2^\circ$ .



Commonwealth Glacier, Antarctica

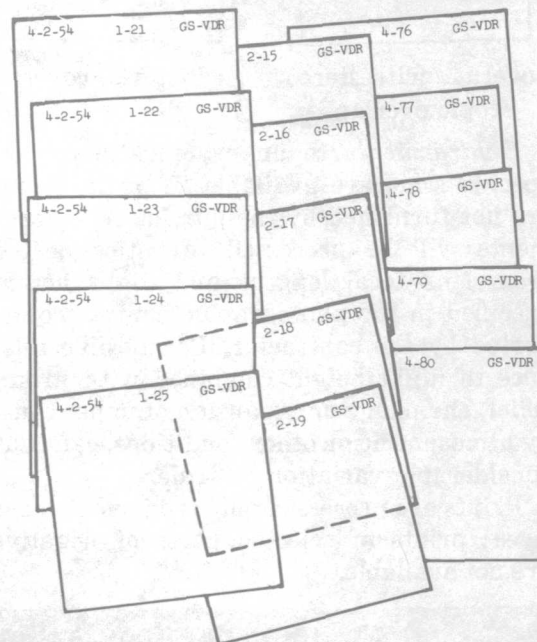


Diagram showing the overlapping arrangement of 9- $\times$ -9-inch exposures on a typical photoindex.

## PRICES

Contact prints, enlargements, and transformed prints are unmounted and untrimmed. The reproduction will be printed on standard paper stock unless the order specifies other materials such as waterproof (low shrink) paper or stable base film.

In most cases similar prices are charged

by other Federal agencies. Prices are subject to revision at any time.

|                            | 1 to 25<br>each | Over 25*<br>each |
|----------------------------|-----------------|------------------|
| Contact prints (9 × 9 in.) | \$1.75          | \$1.25           |
| Enlargement                |                 |                  |

**Magnification:**

|                       |        |        |
|-----------------------|--------|--------|
| 1.5X (14 × 14 in.) -- | \$3.00 | \$2.50 |
| 2X (18 × 18 in.) ---  | 3.50   | 3.00   |
| 3X (27 × 27 in.) ---  | 4.50   | 3.50   |
| 4X (36 × 36 in.) ---  | 9.00   | 8.00   |

For an intermediate-size enlargement, use the price listed for the next larger size. For example, one 24- × 24-inch enlargement costs \$4.50.

|  |        |        |
|--|--------|--------|
| Transformed prints from<br>either convergent or<br>transverse low-oblique<br>photographs ----- | \$3.50 | \$3.00 |
|--|--------|--------|

|  |        |        |
|--|--------|--------|
| Film positives contact<br>printed from aerial neg-<br>atives ----- | \$3.00 | \$3.00 |
|--|--------|--------|

|                           |        |        |
|---------------------------|--------|--------|
| Copy Negatives (one step) | \$3.00 | \$3.00 |
|---------------------------|--------|--------|

**Kelsh plates**

|   |        |        |
|---|--------|--------|
| Contact prints on glass.<br>Specify thickness (0.25<br>or 0.06 inch) and me-<br>thod of printing (emul-<br>sion to emulsion or<br>through film base) ---- | \$6.50 | \$6.00 |
|---|--------|--------|

**ER-55 plates**

|  |        |        |
|--|--------|--------|
| Reductions on glass<br>(11 × 11 cm.) ----- | \$5.00 | \$4.50 |
|--|--------|--------|

**Photoindexes**

|  |        |  |
|--|--------|--|
| 7½- & 15-minute quad-<br>rangle units (10- × 12-<br>in. sheet) ----- | \$2.50 |  |
|--|--------|--|

|  |        |  |
|--|--------|--|
| High-altitude photog-<br>raphy (20- × 24-in.<br>sheet) ----- | \$3.00 |  |
|--|--------|--|

\*Quantity prices apply *only* to those prints ordered in excess of 25 of the same size. For example, 26 contact prints cost \$45.00 (25 at \$1.75 = \$43.75 + 1 at \$1.25).

As the Nation's principal conservation agency, the Department of the Interior has basic responsibilities for water, fish, wildlife, mineral, land, park, and recreational resources. Indian and Territorial affairs are other major concerns of America's "Department of Natural Resources."

The Department works to assure the wisest choice in managing all our resources so each will make its full contribution to a better United States—now and in the future.

