

PLAN OF
MUDDY RIVER, NEVADA
ABOVE A POINT 3 MILES BELOW OVERTON
MISCELLANEOUS DAM SITES

DEPARTMENT OF THE INTERIOR
U. S. GEOLOGICAL SURVEY

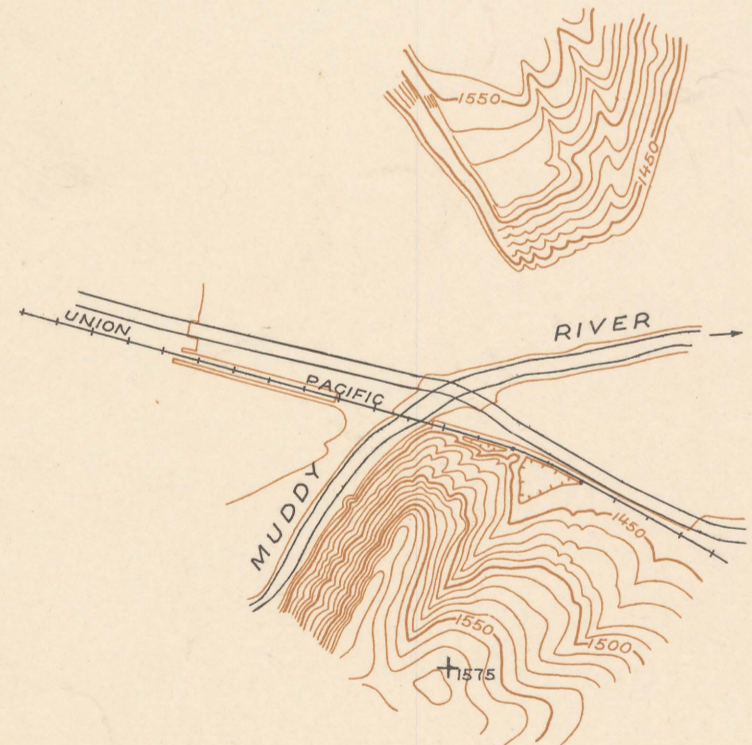
SHEET A



THE NARROWS
DAM SITE NO 1

Scale 1:6000 or 1 inch=500 feet
500 250 0 500 1000 1500 Feet

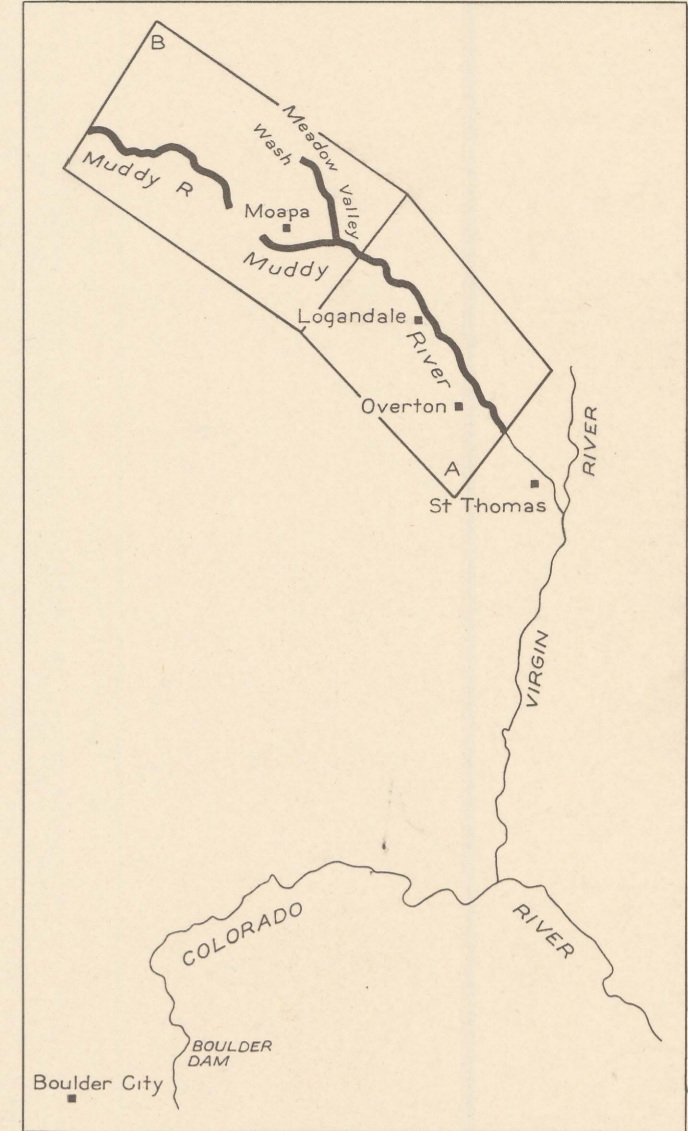
Contour interval 10 feet
Datum is mean sea level



THE NARROWS
DAM SITE NO 2

Scale 1:6000 or 1 inch=500 feet
500 250 0 500 1000 1500 Feet

Contour interval 10 feet
Datum is mean sea level



KEY MAP OF PLAN SHEETS

Topography by Lee Morrison
Control by U. S. Geological Survey and U.S. Bureau of Reclamation
Surveyed in 1934

17°
TRUE NORTH
MAGNETIC NORTH
APPROXIMATE MEAN
DECLINATION, 1934

Scale 81,680
4,000 2,000 0 4,000 8,000 Feet
1 0 1 2 Kilometers

Contour interval on land 20 feet
Contour interval on river surface 5 feet
Datum is mean sea level

DIAGRAM OF TOWNSHIP

6	5	4	3	2	1
7	8	9	10	11	12
13	14	15	16	17	18
19	20	21	22	23	24
25	26	27	28	29	30
31	32	33	34	35	36

Subject to adjustment

(2 plan sheets, one showing dam sites)

U. S. GEOLOGICAL SURVEY
WASHINGTON

Printed in 1937

APR 8 1937

Nevada (Muddy River) River Survey, 1:31,680, 1937

Sheet 1
Coo. 1

LIBRARY

