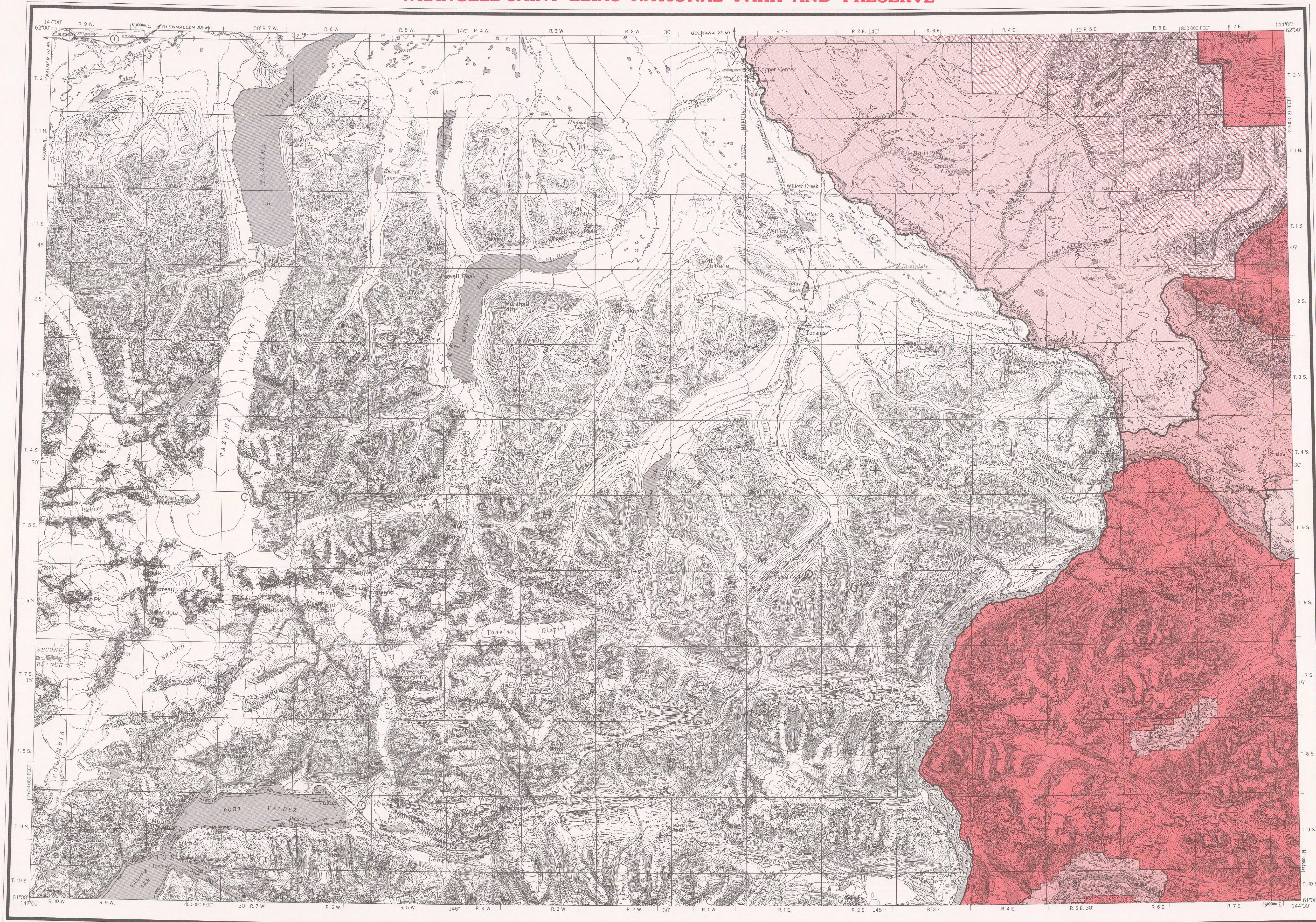


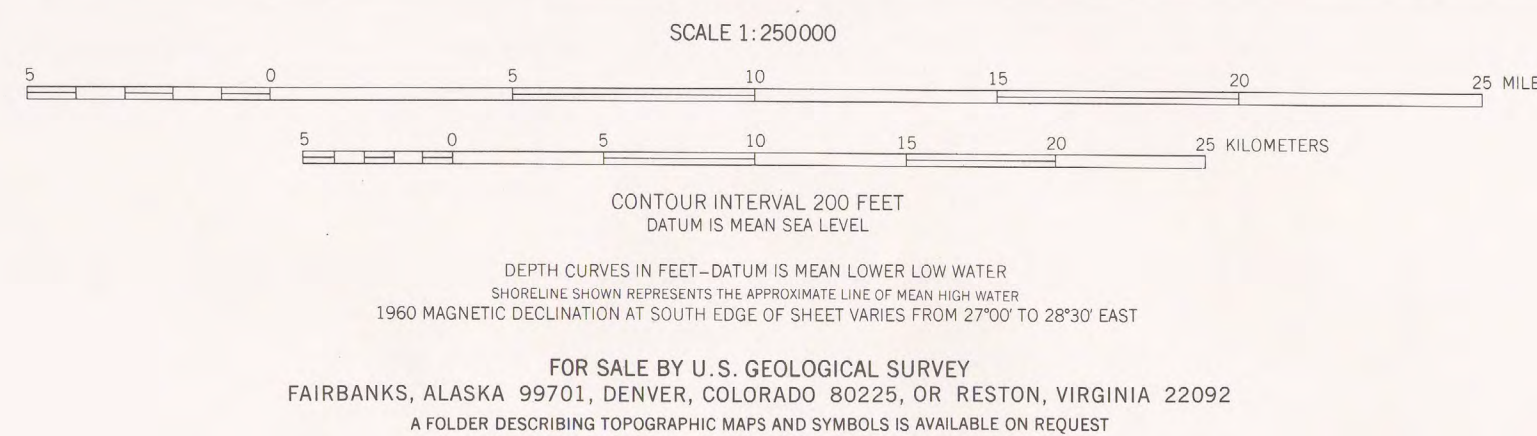
# WRANGELL-SAINT ELIAS NATIONAL PARK AND PRESERVE



BASE MAP PRODUCED BY THE U.S. GEOLOGICAL SURVEY, 1960  
CONTROL BY USGS AND USC&GS  
COMPILED IN 1965 FROM U.S. GEOLOGICAL SURVEY 1:63,360 SCALE MAPS,  
SURVEYED 1949-1960. MAP NOT FIELD CHECKED.  
SELECTED HYDROGRAPHIC DATA COMPILED FROM USC&GS  
CHARTS 8519 (1947) AND 8551 (1963)  
THIS INFORMATION IS NOT INTENDED FOR NAVIGATIONAL PURPOSES  
UNIVERSAL TRANSVERSE MERCATOR PROJECTION, 1927 NORTH AMERICAN DATUM  
100,000-FOOT GRID BASED ON ALASKA COORDINATE SYSTEM, ZONE 3  
10,000-METER UNIVERSAL TRANSVERSE MERCATOR GRID TICKS  
ZONE 6 SHOWN IN BLUE  
GRAY LAND LINES REPRESENT UNSURVEYED AND UNMARKED LOCATIONS  
PREDETERMINED BY THE BUREAU OF LAND MANAGEMENT  
FOLIOS CR-3, CR-4, CR-5, AND CR-6, COPPER RIVER MERIDIAN  
SWAMPS, AS PORTRAYED, INDICATE ONLY THE WETTER AREAS,  
USUALLY OF LOW RELIEF, AS INTERPRETED FROM AERIAL PHOTOGRAPHS  
THIS MAP PORTRAYS GROUND CONDITIONS PRIOR TO  
THE EARTHQUAKE OF MARCH 27, 1964

Boundaries compiled by the National Park Service  
as established by the Alaska National Interest  
Lands Conservation Act, P. L. 96-487, Dec. 2, 1980  
This map does not distinguish between public and  
nonpublic lands within this external boundary, and  
should not be interpreted as authorizing public use  
of State, native or private lands. Persons desiring  
information on land status within this area may  
contact the Alaska Regional Director of the National  
Park Service

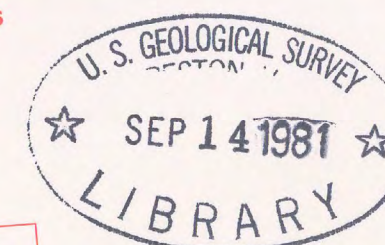
PARK AND WILDERNESS .....  
PARK .....  
PRESERVE .....  
PRESERVE AND WILDERNESS .....



## INDEX TO ADJOINING SHEETS



1 Gulkana 4 McCarthy 7 Mt St Elias  
2 Nabesna 5 Cordova 8 Icy Bay  
3 Valdez 6 Bering Glacier 9 Yakutat



m(286)585.7  
19810  
Set 28  
Sheet 3  
Copy 1

ROAD CLASSIFICATION  
MEDIUM DUTY .....  
UNIMPROVED DIRT .....  
STATE ROUTE

VALDEZ, ALASKA  
N6100-W14400/60X180  
Wrangell-Saint Elias  
National Park and Preserve  
Sheet 3

WRST-90,007 August 1980

61144-A1-AP-250-28