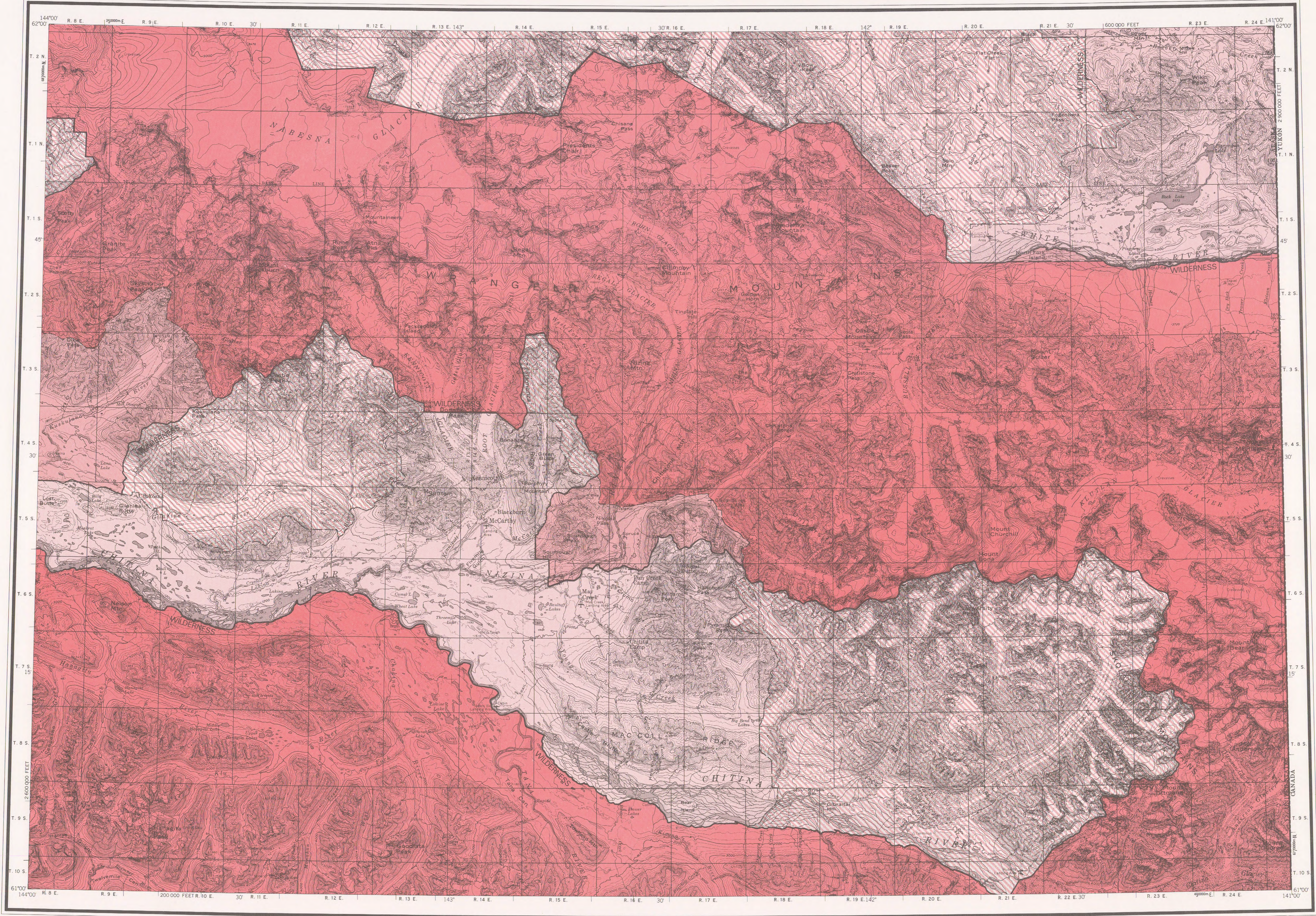


# WRANGELL-SAINT ELIAS NATIONAL PARK AND PRESERVE

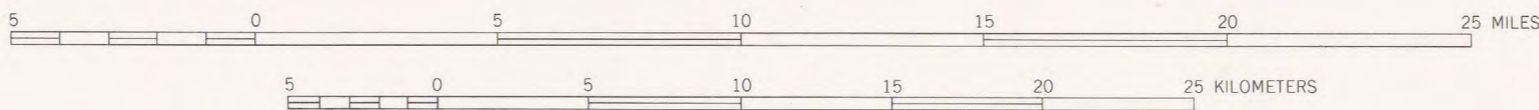


BASE MAP PRODUCED BY THE U. S. GEOLOGICAL SURVEY, 1959  
CONTROL BY USGS, USC&GS, AND INTERNATIONAL BOUNDARY COMMISSION  
COMPILED IN 1965 FROM U. S. GEOLOGICAL SURVEY 1:63 360-SCALE MAPS,  
SURVEYED 1951-1959. MAP NOT FIELD CHECKED  
UNIVERSAL TRANSVERSE MERCATOR PROJECTION, 1927 NORTH AMERICAN DATUM  
100,000-FOOT GRID BASED ON ALASKA COORDINATE SYSTEM, ZONE 7  
10,000-METER UNIVERSAL TRANSVERSE MERCATOR GRID TICKS,  
ZONE 2, SHOWN IN BLUE  
GRAY LAND LINES REPRESENT UNSURVEYED AND UNMARKED LOCATIONS  
PREDETERMINED BY THE BUREAU OF LAND MANAGEMENT  
FOLIOS CR-2, CR-3, CR-6, AND CR-7, COPPER RIVER MERIDIAN  
SWAMPS, AS PORTRAYED, INDICATE ONLY THE WETTER AREAS,  
USUALLY OF LOW RELIEF, AS INTERPRETED FROM AERIAL PHOTOGRAPHS

Boundaries compiled by the National Park Service  
as established by the Alaska National Interest  
Lands Conservation Act, P. L. 96-487, Dec. 2, 1980  
This map does not distinguish between public and  
nonpublic lands within this external boundary, and  
should not be interpreted as authorizing public use  
of State, native or private lands. Persons desiring  
information on land status within this area may  
contact the Alaska Regional Director of the Na-  
tional Park Service

PARK AND WILDERNESS .....  
PARK .....  
PRESERVE .....  
PRESERVE AND WILDERNESS .....

SCALE 1:250000

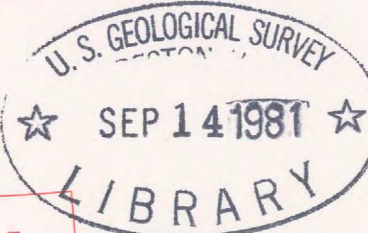
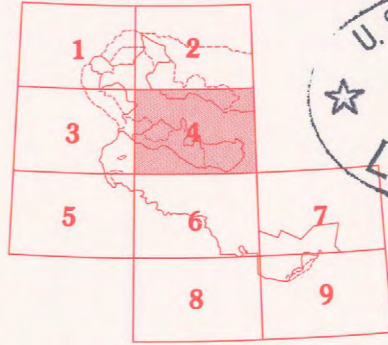


CONTOUR INTERVAL 200 FEET  
DATUM IS MEAN SEA LEVEL

1959 MAGNETIC DECLINATION AT SOUTH EDGE OF SHEET VARIES FROM 28° TO 29°30' EAST

FOR SALE BY U. S. GEOLOGICAL SURVEY  
FAIRBANKS, ALASKA 99701, DENVER, COLORADO 80225, OR RESTON, VIRGINIA 22092  
A FOLDER DESCRIBING TOPOGRAPHIC MAPS AND SYMBOLS IS AVAILABLE ON REQUEST

INDEX TO ADJOINING SHEETS



M(286)585.7  
19810  
Set 28  
Sheet 4  
Copy 1

ROAD CLASSIFICATION  
LIGHT DUTY ..... UNIMPROVED DIRT .....

MC CARTHY, ALASKA  
N6100-W14100/60x180  
Wrangell-Saint Elias  
National Park and Preserve  
Sheet 4

WRST-90,007 August 1980

61141-A1-AP-250-28