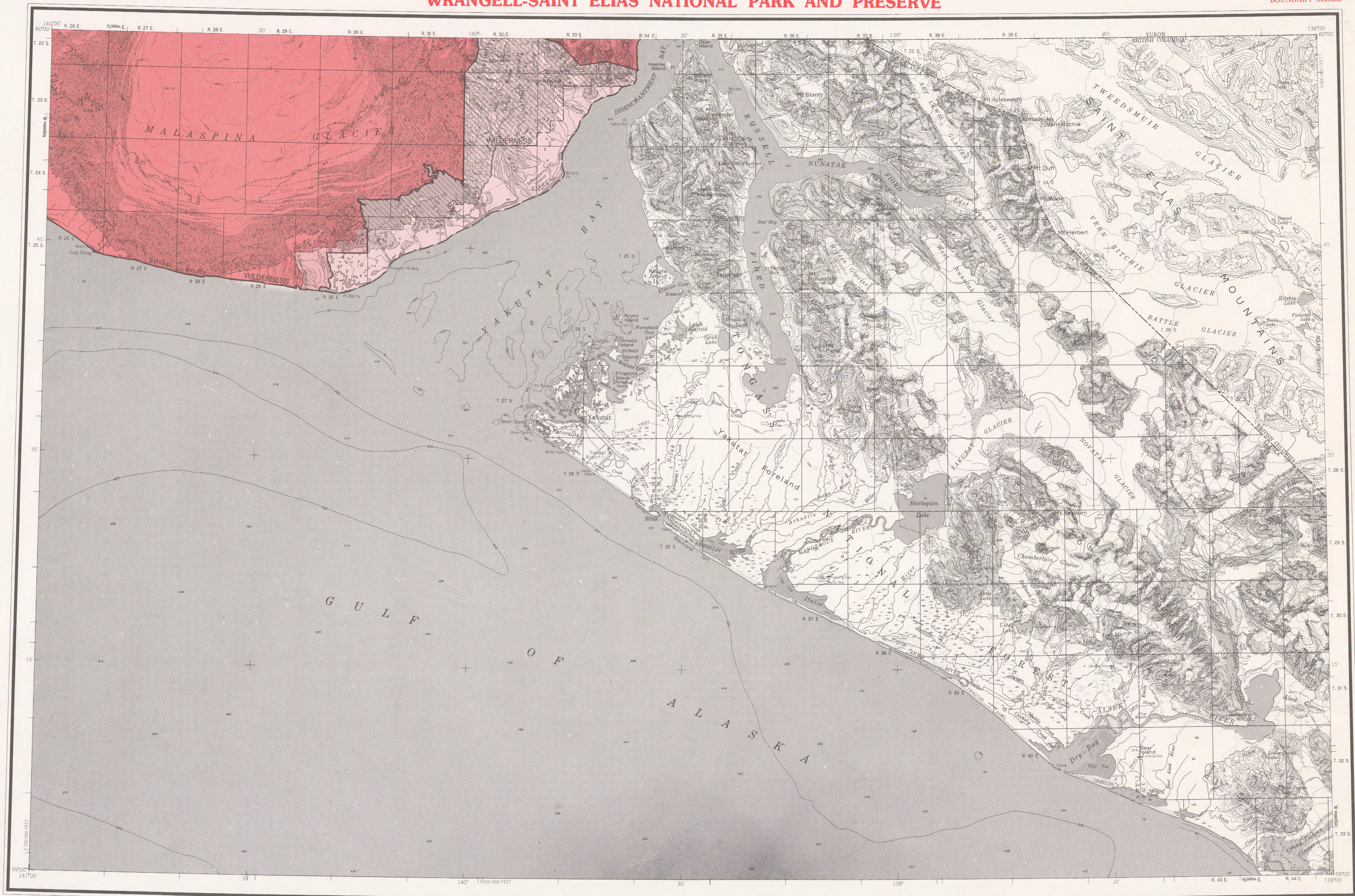


WRANGELL-SAINT ELIAS NATIONAL PARK AND PRESERVE



BASE MAP PRODUCED BY THE U. S. GEOLOGICAL SURVEY, 1961

CONTROL BY USGS USCGS AND INTERNATIONAL BOUNDARY
CANADIAN PORTION COPIED FROM YAKUTAT QUADRANGLE (1:250,000)
ARMY SURVEY ESTABLISHMENT, 1955

TOPOGRAPHY BY PHOTOGRAMMETRIC METHODS FROM AERIAL PHOTOGRAPHS
TAKEN 1961, AND FROM USGS 1:63,360 SCALE MAPS, SURVEYED 1945, 1954,
AND 1958, FIELD ANNOTATED 1959. MAP NOT FIELD CHECKED

SELECTED HYDROGRAPHIC DATA COMPILED FROM USGS CHARTS 8002 (1963),
8402 (1960) AND 8455 (1960). THIS INFORMATION IS NOT INTENDED
FOR NAVIGATIONAL PURPOSES

UNIVERSAL TRANSVERSE MERCATOR PROJECTION, 1927 NORTH AMERICAN DATUM
100,000-FOOT GRID BASED ON ALASKA COORDINATE SYSTEM, ZONE 1
10,000-METER UNIVERSAL TRANSVERSE MERCATOR GRID TICS, ZONE 7
SHOWN IN BLUE

LAND LINES REPRESENT UNSURVEYED AND UNMARKED LOCATIONS
PREDETERMINED BY THE BUREAU OF LAND MANAGEMENT
POLDS OR 8 AND CR 9, COPPER RIVER MERIDIAN

SWAMPS, AS PORTRAYED, INDICATE ONLY THE WETTER AREAS
USUALLY OF LOW RELIEF, AS INTERPRETED FROM AERIAL PHOTOGRAPHS

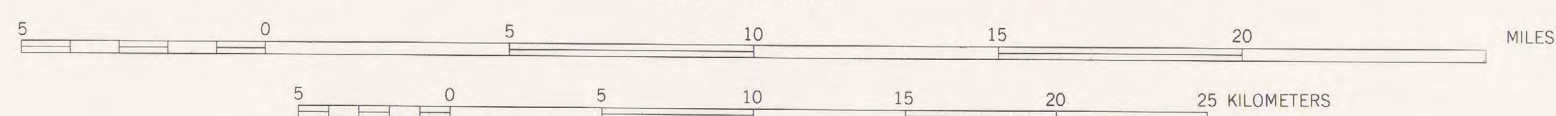
LAKE ELEVATIONS ARE UNCHECKED

Boundaries compiled by the National Park Service
as established by the Alaska National Interest
Lands Conservation Act, P. L. 96-487, Dec. 2, 1980

This map does not distinguish between public and
nonpublic lands within this external boundary, and
should not be interpreted as authorizing public use
of State, native or private lands. Persons desiring
information on land status within this area may
contact the Alaska Regional Director of the Na-
tional Park Service

PARK AND WILDERNESS
PARK
PRESERVE
PRESERVE AND WILDERNESS

SCALE 1:250,000



CONTOUR INTERVAL 200 FEET IN UNITED STATES AND 500 FEET IN CANADA
DOTTED LINES REPRESENT 100-FOOT CONTOURS

DATUM IS MEAN SEA LEVEL
DEPTH CURVES IN FEET-DATUM IS MEAN LOWER LOW WATER
SHORELINE SHOWN REPRESENTS THE APPROXIMATE LINE OF MEAN HIGH WATER
1959 MAGNETIC DECLINATION AT SOUTH EDGE OF SHEET VARIES FROM 28° TO 29° EAST

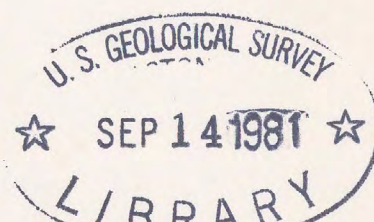
THIS MAP COMPLIES WITH NATIONAL MAP ACCURACY STANDARDS
FOR SALE BY U. S. GEOLOGICAL SURVEY
FAIRBANKS, ALASKA 99701, DENVER, COLORADO 80225, OR RESTON, VIRGINIA 22092
A FOLDER DESCRIBING TOPOGRAPHIC MAPS AND SYMBOLS IS AVAILABLE ON REQUEST

INDEX TO ADJOINING SHEETS



1 Gulkana 4 McCarthy 7 Mt St Elias
2 Nabesna 5 Cordova 8 Icy Bay
3 Valdez 6 Bering Glacier 9 Yakutat

59138-A1-AP-250-28



m(286)585.7
1981
set 28
Sheet 9
copy 1

ROAD CLASSIFICATION

LIGHT DUTY UNIMPROVED DIRT

YAKUTAT, ALASKA-CANADA

N5900-W13800/60X180

Wrangell-Saint Elias
National Park and Preserve
Sheet 9

WRST-90,007 August 1980