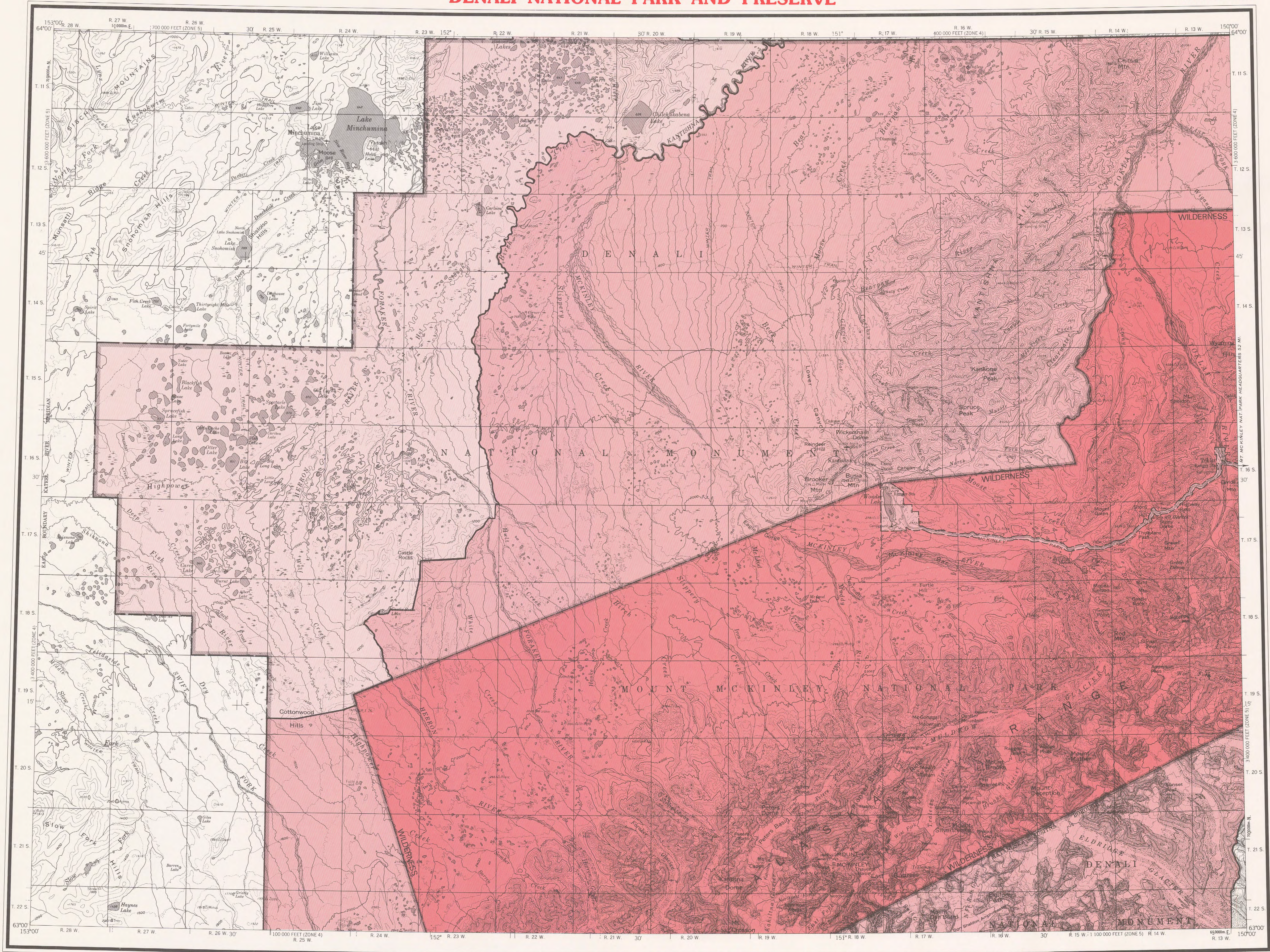


DENALI NATIONAL PARK AND PRESERVE



BASE MAP PRODUCED BY THE U. S. GEOLOGICAL SURVEY, 1958. MINOR REVISIONS 1978.

CONTROL BY USGS AND USGS

COMPILED IN 1963 FROM U. S. GEOLOGICAL SURVEY 1:63,360 SCALE MAPS. SURVEYED 1952, 1954, AND 1958. MAP NOT FIELD CHECKED.

UNIVERSAL TRANSVERSE MERCATOR PROJECTION, 1927 NORTH AMERICAN DATUM. 100,000-FOOT GRID BASED ON ALASKA COORDINATE SYSTEM, ZONES 4 AND 5. 10,000-METER UNIVERSAL TRANSVERSE MERCATOR GRID TICS, ZONE 5, SHOWN IN BLUE.

GRAY LAND LINES REPRESENT UNSURVEYED AND UNMARKED LOCATIONS. PREDETERMINED BY THE BUREAU OF LAND MANAGEMENT. FOLDS F-10 AND F-11, FAIRBANKS MERIDIAN.

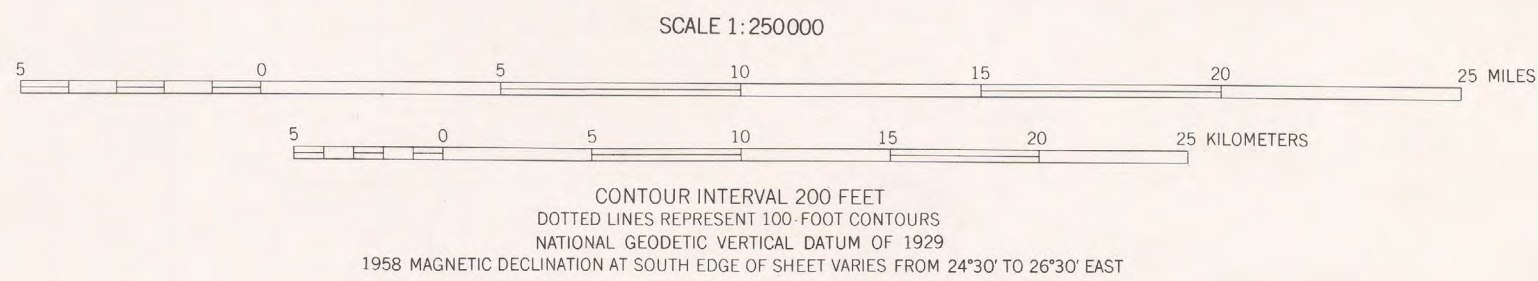
SWAMPY AREAS, AS PORTRAYED, INDICATE ONLY THE WETTER AREAS. USUALLY OF LOW RELIEF, AS INTERPRETED FROM AERIAL PHOTOGRAPHS.

THERE MAY BE PRIVATE HOLDINGS WITHIN THE BOUNDARIES OF THE NATIONAL OR STATE RESERVATIONS SHOWN ON THIS MAP.

Boundaries compiled by the National Park Service as established by the Alaska National Interest Lands Conservation Act, P. L. 96-487, Dec. 2, 1980.

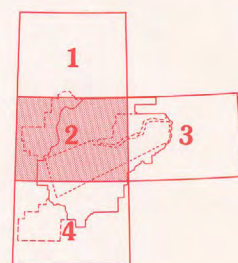
This map does not distinguish between public and nonpublic lands within this external boundary, and should not be interpreted as authorizing public use of State, native or private lands. Persons desiring information on land status within this area may contact the Alaska Regional Director of the National Park Service.

PARK AND WILDERNESS
PARK
PRESERVE



FOR SALE BY U. S. GEOLOGICAL SURVEY
FAIRBANKS, ALASKA 99701, DENVER, COLORADO 80225, OR RESTON, VIRGINIA 22092
A FOLDER DESCRIBING TOPOGRAPHIC MAPS AND SYMBOLS IS AVAILABLE ON REQUEST.

INDEX TO ADJOINING SHEETS



1 Kantishna River 3 Healy
2 Mt McKinley 4 Talkeetna

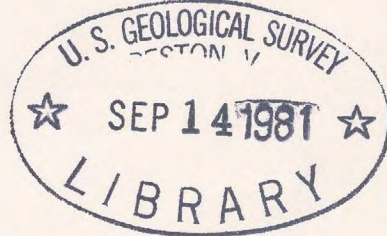
ROAD CLASSIFICATION
LIGHT DUTY UNIMPROVED DIRT

MT. MCKINLEY, ALASKA
N6300-W15000/60X180

**Denali
National Park and Preserve
Sheet 2**

DENA 90,007 July 1980

63150-A1-AP-250-20



m(286)585.7
19810
Set 20
Sheet 2
Copy 1

