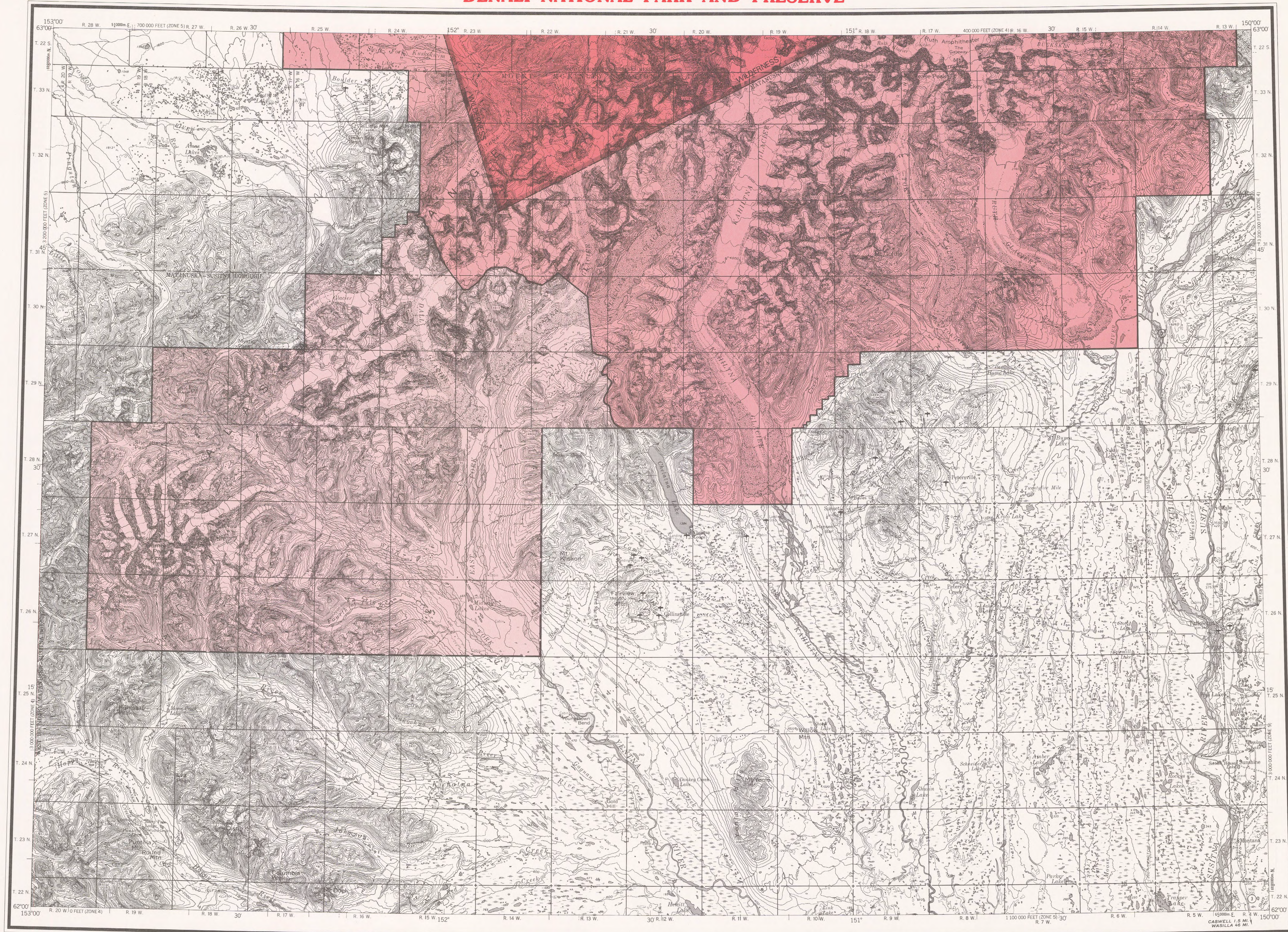


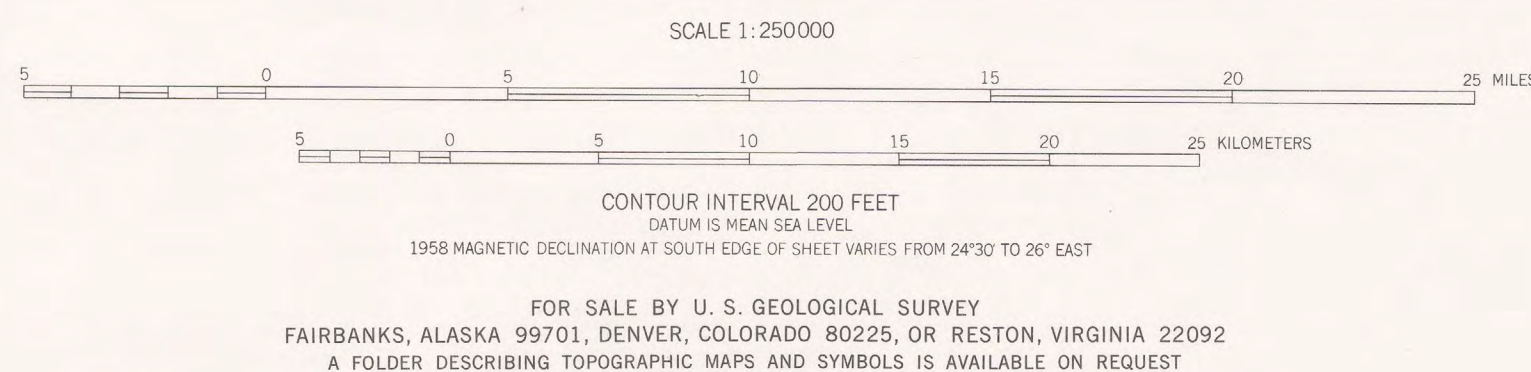
DENALI NATIONAL PARK AND PRESERVE



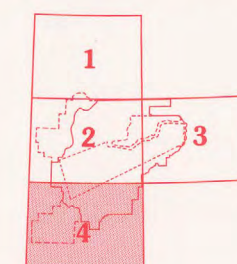
BASE MAP PRODUCED BY THE U. S. GEOLOGICAL SURVEY, 1958. MINOR REVISIONS 1967.
CONTROL BY USGS, USC&GS.
COMPILED IN 1963 FROM U. S. GEOLOGICAL SURVEY 1:63,360-SERIES MAPS, SURVEYED 1954 AND 1958. MAP NOT FIELD CHECKED.
UNIVERSAL TRANSVERSE MERCATOR PROJECTION, 1927 NORTH AMERICAN DATUM, 100,000-FOOT GRID BASED ON ALASKA COORDINATE SYSTEM, ZONES 4 AND 5, 10,000-METER UNIVERSAL TRANSVERSE MERCATOR GRID TICS, ZONE 5, SHOWN IN BLUE.
GRAY LAND LINES REPRESENT UNSURVEYED AND UNMARKED LOCATIONS. PREDETERMINED BY THE BUREAU OF LAND MANAGEMENT, FOLIOS S-2, S-3, SEWARD MERIDIAN AND F-10, F-11, FAIRBANKS MERIDIAN.
SWAMPS AS PORTRAYED, INDICATE ONLY THE WETTER AREAS, USUALLY OF LOW RELIEF, AS INTERPRETED FROM AERIAL PHOTOGRAPHS.

Boundaries compiled by the National Park Service as established by the Alaska National Interest Lands Conservation Act, P. L. 96-487, Dec. 2, 1980.
This map does not distinguish between public and nonpublic lands within this external boundary, and should not be interpreted as authorizing public use of State, native or private lands. Persons desiring information on land status within this area may contact the Alaska Regional Director of the National Park Service.

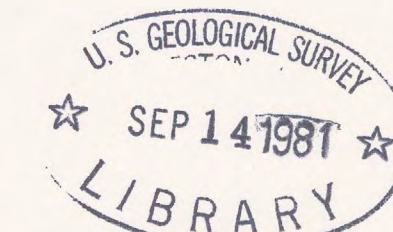
PARK AND WILDERNESS
PARK
PRESERVE



INDEX TO ADJOINING SHEETS



1 Kantishna River 3 Healy
2 Mt McKinley 4 Talkeetna



62150-A1-AP-250-20



ROAD CLASSIFICATION
LIGHT-DUTY UNIMPROVED DIRT
STATE ROUTE
TALKEETNA, ALASKA
N6200-W15000/60X180
Denali
National Park and Preserve
Sheet 4
DENA 90,007 July 1980

M(286) 585.7
1981
Sat 20
Sheet 4
copy 1