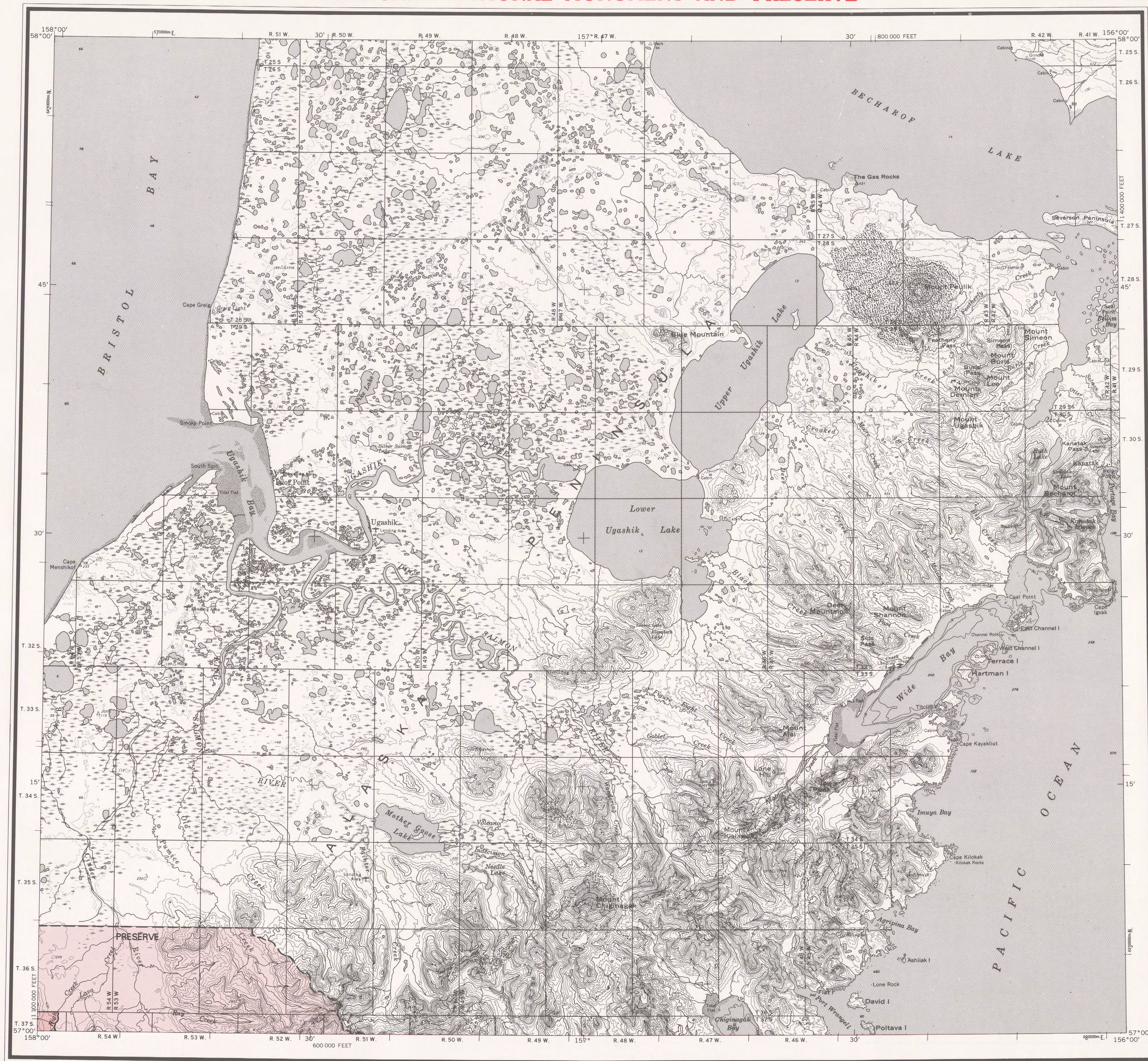


ANIACHAK NATIONAL MONUMENT AND PRESERVE



BASE MAP PRODUCED BY THE U. S. GEOLOGICAL SURVEY, 1963. MINOR REVISIONS 1975.

CONTROL BY USGS, USC&GS, AND USCE

COMPILED IN 1967 FROM U. S. GEOLOGICAL SURVEY 1:63 360 SERIES MAPS, DATED 1951-1963, AND FROM ARMY MAP SERVICE 1:50 000 SERIES MAPS, DATED 1951-1953. MAP NOT FIELD CHECKED.

SELECTED HYDROGRAPHIC DATA COMPILED FROM USC&GS CHARTS 8666 (1964), 8802 (1965), 8851 (1967), AND 9302 (1966). THIS INFORMATION IS NOT INTENDED FOR NAVIGATIONAL PURPOSES.

UNIVERSAL TRANSVERSE MERCATOR PROJECTION, 1927 NORTH AMERICAN DATUM 100,000-FOOT GRID BASED ON ALASKA COORDINATE SYSTEM, ZONE 6. 10,000-METRE UNIVERSAL TRANSVERSE MERCATOR GRID TICS, ZONE 4, SHOWN IN BLUE.

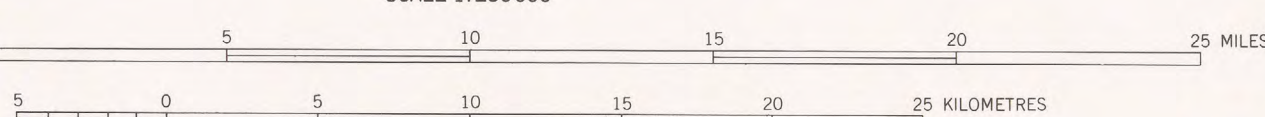
GRAY LAND LINES REPRESENT UNSURVEYED AND UNMARKED LOCATIONS DETERMINED BY THE BUREAU OF LAND MANAGEMENT. FOLIOS S-21, S-22, S-25, AND S-26, SEWARD MERIDIAN. SWAMPS, AS PORTRAYED, INDICATE ONLY THE WETTER AREAS, USUALLY OF LOW RELIEF, AS INTERPRETED FROM AERIAL PHOTOGRAPHS. LAKE ELEVATIONS ARE UNCHECKED.

Boundaries compiled by the National Park Service as established by the Alaska National Interest Lands Conservation Act, P.L. 96-487, Dec. 2, 1980.

This map does not distinguish between public and nonpublic lands within this external boundary, and should not be interpreted as authorizing public use of State, native or private lands. Persons desiring information on land status within this area may contact the Alaska Regional Director of the National Park Service.

MONUMENT
PRESERVE

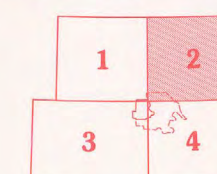
SCALE 1:250,000



CONTOUR INTERVAL 200 FEET
DOTTED LINES REPRESENT 100-FOOT CONTOURS
NATIONAL GEODETIC VERTICAL DATUM OF 1929
DEPTH CURVES AND SOUNDINGS IN FEET—DATUM IS MEAN LOWER LOW WATER
SHORELINE SHOWN REPRESENTS THE APPROXIMATE LINE OF MEAN HIGH WATER
1963 MAGNETIC DECLINATION AT SOUTH EDGE OF SHEET VARIES FROM 20° TO 21° EAST

FOR SALE BY U. S. GEOLOGICAL SURVEY
FAIRBANKS, ALASKA 99701, DENVER, COLORADO 80225, OR RESTON, VIRGINIA 22092
A FOLDER DESCRIBING TOPOGRAPHIC MAPS AND SYMBOLS IS AVAILABLE ON REQUEST

INDEX TO ADJOINING SHEETS



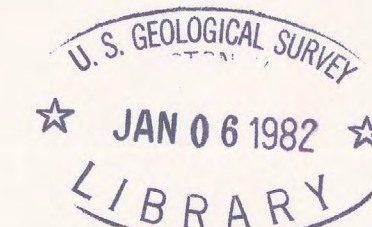
1 Bristol Bay 3 Chignik
2 Ugashik 4 Sutwik Island

57156-A1-AP-250-17

ROAD CLASSIFICATION
TRAILS

UGASHIK, ALASKA
N5700—W15600/60X120
Aniakchak
National Monument and Preserve
Sheet 2

ANIA-90.005 October 1978



m(286)585.7
1981
Set 17
Sheet 2
Copy 1