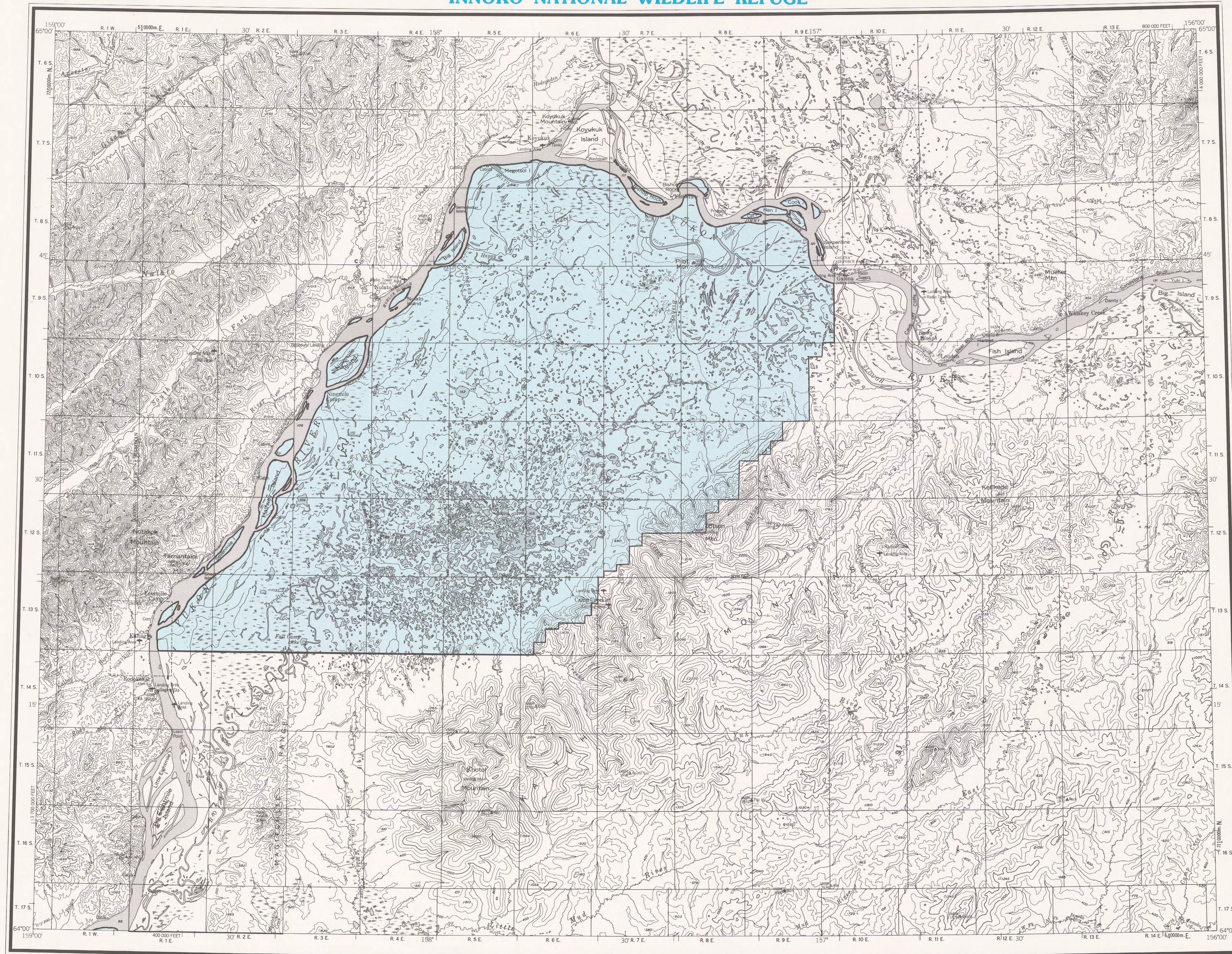


INNOKO NATIONAL WILDLIFE REFUGE



BASE MAP PRODUCED BY THE U. S. GEOLOGICAL SURVEY, 1952. MINOR REVISIONS 1974.

CONTROL BY NGS/NOAA AND USCE

COMPILED IN 1956 FROM U. S. GEOLOGICAL SURVEY 1:63,360 SERIES

MAPS SURVEYED 1952

UNIVERSAL TRANSVERSE MERCATOR PROJECTION, 1927 NORTH AMERICAN DATUM
100 000-FOOT GRID BASED ON ALASKA COORDINATE SYSTEM, ZONE 4
10 000-METRE UNIVERSAL TRANSVERSE MERCATOR GRID TICKS,
ZONE 4, SHOWN IN BLUE

LAND LINES REPRESENT UNSURVEYED AND UNMARKED LOCATIONS
PREDETERMINED BY THE BUREAU OF LAND MANAGEMENT
FOLIOS K-11, K-12, K-17, AND K-18, KATEEL RIVER MERIDIAN

SWAMPS, AS PORTRAYED, INDICATE ONLY THE WETTER AREAS
USUALLY OF LOW RELIEF, AS INTERPRETED FROM AERIAL PHOTOGRAPHS

Boundary compiled by the U. S. Fish and Wildlife
Service as established by the Alaska National
Interest Lands Conservation Act, P. L. 96-487, Dec.
2, 1980

This map does not distinguish between public and
nonpublic lands within this external boundary, and
should not be interpreted as authorizing public use
of State, native or private lands. Persons desiring
information on land status within this area may
contact the Alaska Regional Director of the U. S.
Fish and Wildlife Service

REFUGE.....

SCALE 1:250 000

5 0 5 10 15 20 25 MILES

5 0 5 10 15 20 25 KILOMETRES

CONTOUR INTERVAL 200 FEET
NATIONAL GEODETIC VERTICAL DATUM OF 1929

1956 MAGNETIC DECLINATION AT SOUTH EDGE OF SHEET VARIES FROM 21°30' TO 23°30' EAST

FOR SALE BY U. S. GEOLOGICAL SURVEY
FAIRBANKS, ALASKA 99701, DENVER, COLORADO 80225, OR RESTON, VIRGINIA 22092
A FOLDER DESCRIBING TOPOGRAPHIC MAPS AND SYMBOLS IS AVAILABLE ON REQUEST

INDEX TO ADJOINING SHEETS



1 Nulato 4 Holy Cross
2 Unalakleet 5 Iditarod
3 Ophir

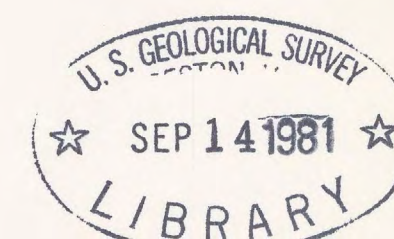
ROAD CLASSIFICATION
LIGHT DUTY..... UNIMPROVED DIRT

NULATO, ALASKA
N6400-15600/60X180

Innoko
National Wildlife Refuge
Sheet 1

October 1978

64156-A1-AW-250-5



M(286) 585.7
1981
Set 5
Sheet 1
Copy 1