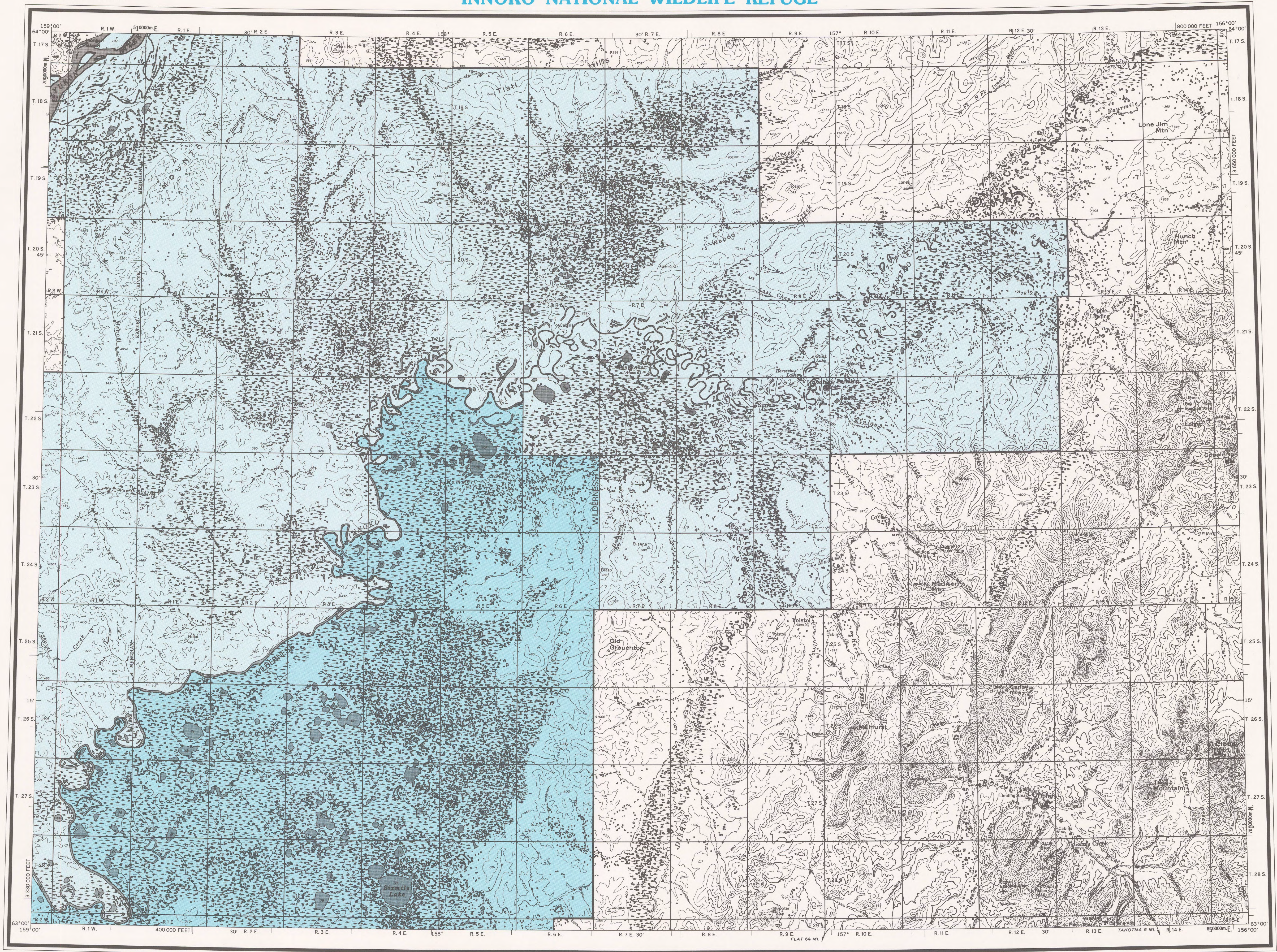


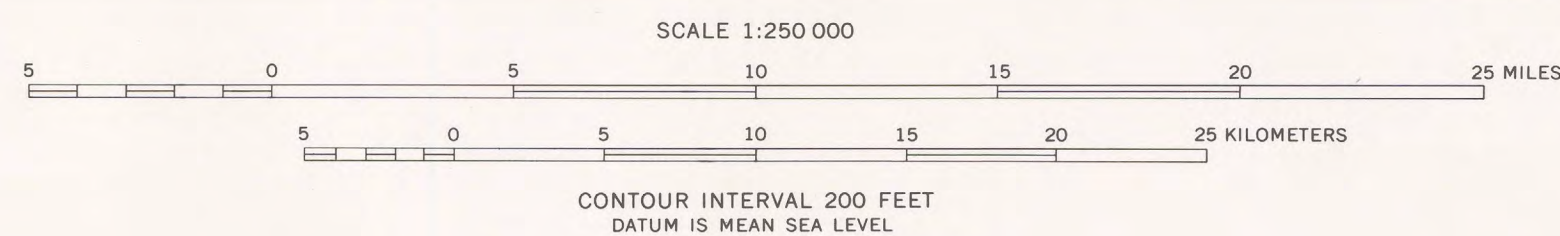
# INNOKO NATIONAL WILDLIFE REFUGE



BASE MAP PRODUCED BY THE U. S. GEOLOGICAL SURVEY, 1954  
CONTROL BY USGS, USC&GS, AND USCE  
COMPILED IN 1964 FROM U. S. GEOLOGICAL SURVEY 1:63 360 SERIES MAPS,  
SURVEYED IN 1954. MAP NOT FIELD CHECKED  
UNIVERSAL TRANSVERSE MERCATOR PROJECTION. 1927 NORTH AMERICAN DATUM  
100,000-FOOT GRID BASED ON ALASKA COORDINATE SYSTEM, ZONE 6  
10,000-METER UNIVERSAL TRANSVERSE MERCATOR GRID TICS,  
ZONE 4, SHOWN IN BLUE  
LAND LINES REPRESENT UNSURVEYED AND UNMARKED LOCATIONS  
PREDETERMINED BY THE BUREAU OF LAND MANAGEMENT  
FOLIOS K-17 AND K-18, KATEEL RIVER MERIDIAN  
SWAMPS AS PORTRAYED, INDICATE ONLY THE WETTER AREAS,  
USUALLY OF LOW RELIEF, AS INTERPRETED FROM AERIAL PHOTOGRAPHS

Boundary compiled by the U. S. Fish and Wildlife  
Service as established by the Alaska National Inter-  
est Lands Conservation Act, P. L. 96-487, Dec.  
2, 1980  
This map does not distinguish between public and  
nonpublic lands within this external boundary, and  
should not be interpreted as authorizing public use  
of State, native or private lands. Persons desiring  
information on land status within this area may  
contact the Alaska Regional Director of the U. S.  
Fish and Wildlife Service

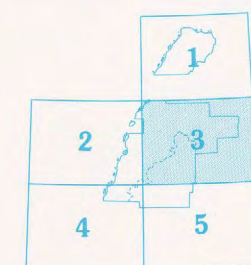
REFUGE.....  
REFUGE AND WILDERNESS .....



1954 MAGNETIC DECLINATION AT SOUTH EDGE OF SHEET VARIES FROM 21° TO 23° EAST

FOR SALE BY U. S. GEOLOGICAL SURVEY  
FAIRBANKS, ALASKA 99701, DENVER, COLORADO 80225, OR RESTON, VIRGINIA 22092  
A FOLDER DESCRIBING TOPOGRAPHIC MAPS AND SYMBOLS IS AVAILABLE ON REQUEST

## INDEX TO ADJOINING SHEETS



1 Nulato 4 Holy Cross  
2 Unalakleet 5 Iditarod  
3 Ophir

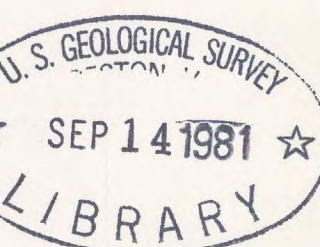
ROAD CLASSIFICATION  
LIGHT DUTY UNIMPROVED DIRT

OPHIR, ALASKA  
N6300-W156/60 X 180

Innoko  
National Wildlife Refuge  
Sheet 3

October 1978

63156-A1-AW-250-5



m(286)585.7  
19810  
Set 5  
Sheet 3  
Copy 1