

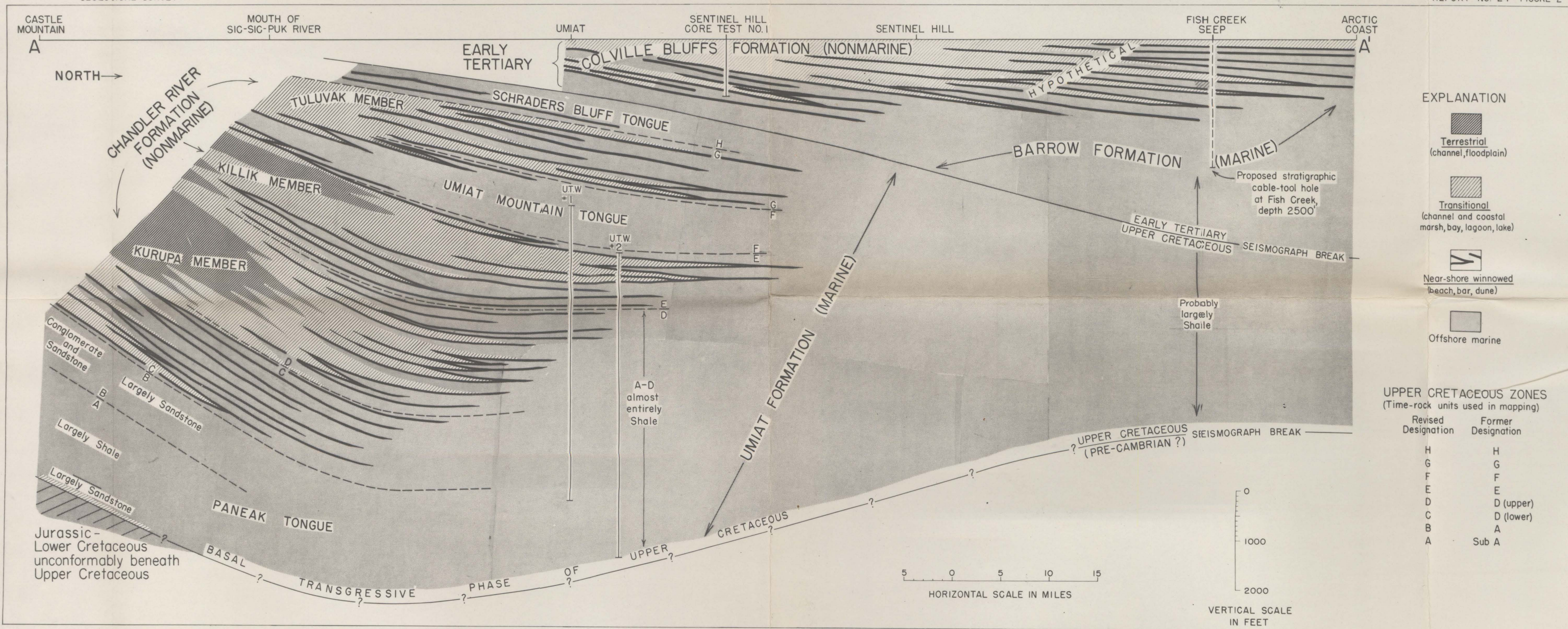
(200)  
N22 agt  
no. 24  
fig. 2

PLEASE REPLACE IN POCKET  
IN BACK OF BOUND VOLUME



UNITED STATES DEPARTMENT OF THE INTERIOR  
GEOLOGICAL SURVEY

REPORT NO. 24 FIGURE 2



RESTORED FACIES CROSS SECTION (A-A') OF UPPER CRETACEOUS AND TERTIARY ROCKS  
NORTHERN ALASKA

By Thomas G. Payne  
November 1948