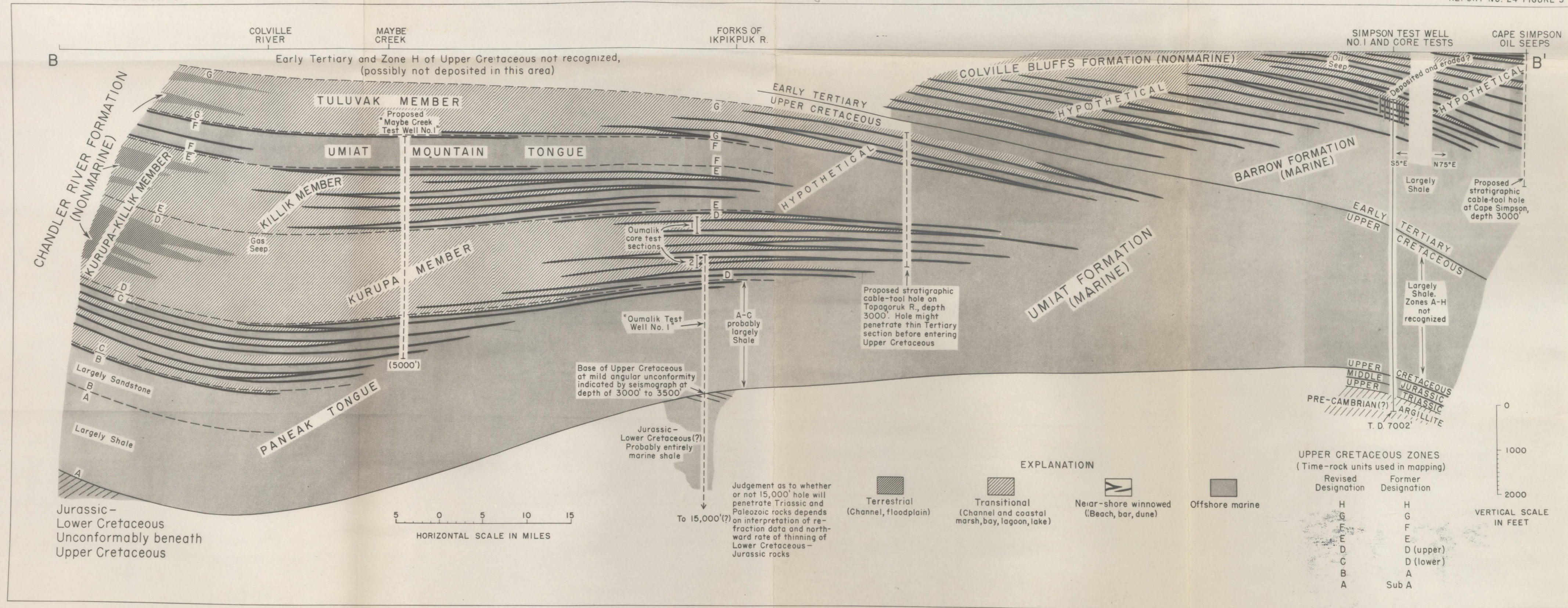


200)  
N22 agr  
no. 24  
fig. 3

PLEASE REPLACE IN POCKET  
IN BACK OF BOUND VOLUME



RESTORED FACIES CROSS SECTION (B-B') OF UPPER CRETACEOUS AND EARLY TERTIARY ROCKS  
NORTHERN ALASKA

By Thomas G. Payne  
November 1948

Rept 24