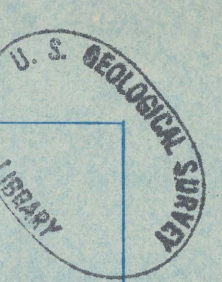
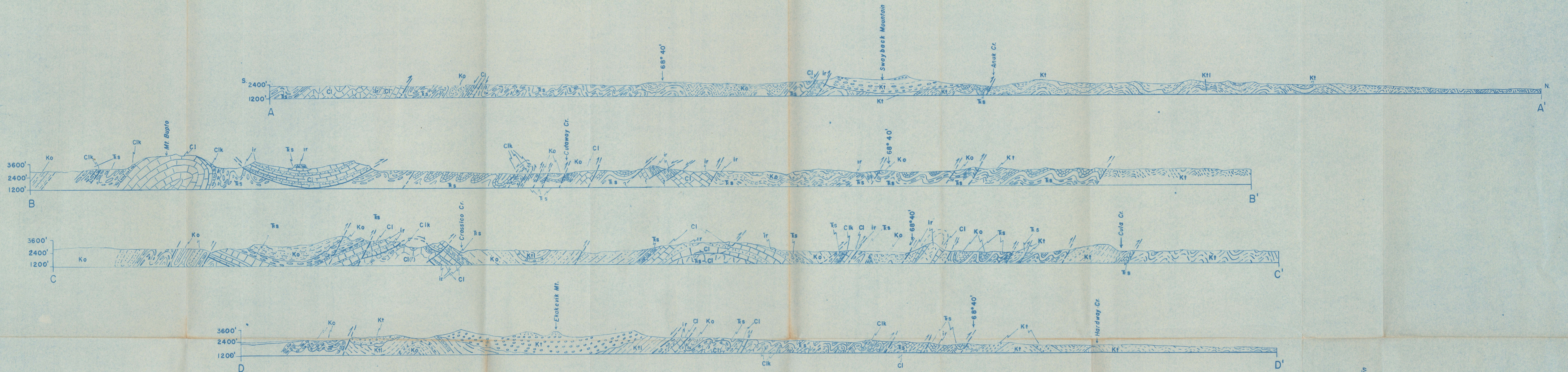


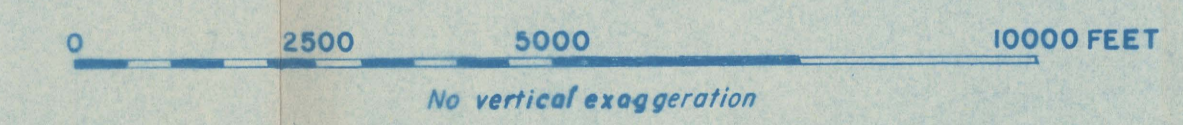
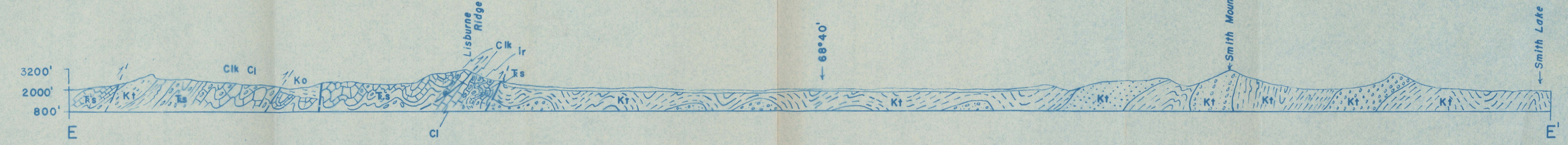
(300)
No. 43
plate 2



PLEASE REPLACE IN POCKET
IN BACK OF BOUND VOLUME



- EXPLANATION**
- Sedimentary Rocks
- Torok formation-upper unit
 - Torok formation-middle unit
 - Torok formation-lower unit
 - Okpikruak formation
 - Shublik formation
(including Pennsylvanian-Permian(?) units)
 - Lisburne limestone, Cl,
Kiruktagiak facies, Clk
- MISSISSIPPIAN-
CARBONIFEROUS-
TRIASSIC
- Igneous Rocks
- Mafic igneous rocks



GENERALIZED CROSS SECTIONS OF THE SOUTHERN FOOTHILLS SECTION
BETWEEN THE ETIVLUK AND KILIGWA RIVERS, ALASKA